

University of Nebraska - Lincoln

DigitalCommons@University of Nebraska - Lincoln

---

Nebraska Tractor Tests

Tractor Test and Power Museum, The Lester F. Larsen

---

1-1-1998

## Test 1758: Agco Allis 9735 Diesel 32-Speed

Nebraska Tractor Test Lab

University of Nebraska-Lincoln, [tractortestlab@unl.edu](mailto:tractortestlab@unl.edu)

Follow this and additional works at: <https://digitalcommons.unl.edu/tractormuseumlit>



Part of the [Energy Systems Commons](#), [History of Science, Technology, and Medicine Commons](#), [Other Mechanical Engineering Commons](#), [Physical Sciences and Mathematics Commons](#), [Science and Mathematics Education Commons](#), and the [United States History Commons](#)

---

Nebraska Tractor Test Lab, "Test 1758: Agco Allis 9735 Diesel 32-Speed" (1998). *Nebraska Tractor Tests*. 2066.

<https://digitalcommons.unl.edu/tractormuseumlit/2066>

This Article is brought to you for free and open access by the Tractor Test and Power Museum, The Lester F. Larsen at DigitalCommons@University of Nebraska - Lincoln. It has been accepted for inclusion in Nebraska Tractor Tests by an authorized administrator of DigitalCommons@University of Nebraska - Lincoln.

# NEBRASKA OECD TRACTOR TEST 1758—SUMMARY 272

## AGCO ALLIS 9735 DIESEL

### 32 SPEED

#### POWER TAKE-OFF PERFORMANCE

Power HP (kW)	Crank shaft speed rpm	Gal/hr (l/h)	lb/hp.hr (kg/kW.h)	Hp.hr/gal (kW.h/l)	Mean Atmospheric Conditions
<b>MAXIMUM POWER AND FUEL CONSUMPTION</b>					
<b>Rated Engine Speed (PTO speed—1053 rpm)</b>					
125.58 (93.65)	2200	8.12 (30.72)	0.458 (0.278)	15.47 (3.05)	
<b>Standard Power Take-off speed (1000 rpm)</b>					
132.17 (98.56)	2089	8.08 (30.59)	0.433 (0.263)	16.36 (3.22)	
<b>Maximum Power (2 hours)</b>					
137.32 (102.40)	1800	7.78 (29.46)	0.401 (0.244)	17.65 (3.48)	

#### VARYING POWER AND FUEL CONSUMPTION

125.58 (93.65)	2200	8.12 (30.72)	0.458 (0.278)	15.47 (3.05)	Air temperature
108.99 (81.28)	2247	7.37 (27.89)	0.479 (0.291)	14.79 (2.91)	75°F (24°C)
82.79 (61.73)	2272	6.18 (23.41)	0.529 (0.322)	13.39 (2.64)	Relative humidity
55.87 (41.66)	2295	4.91 (18.60)	0.623 (0.379)	11.37 (2.24)	74%
28.00 (20.88)	2319	3.64 (13.79)	0.921 (0.560)	7.69 (1.51)	Barometer
1.06 (0.79)	2336	2.54 (9.61)	16.912 (10.288)	0.42 (0.08)	28.67"Hg (97.09 kPa)

Maximum Torque 440 lb.-ft. (596 Nm) at 1251rpm

Maximum Torque Rise 46.6%

Torque rise at 1800 engine rpm — 34%

#### DRAWBAR PERFORMANCE (Unballasted—Front Drive Engaged)

##### FUEL CONSUMPTION CHARACTERISTICS

Power Hp (kW)	Drawbar pull lbs (kN)	Speed mph (km/h)	Crank- shaft speed rpm	Slip %	Fuel Consumption lb/hp.hr (kg/kW.h)	Hp.hr/gal (kW.h/l)	Temp. °F (°C) cool- ing med	Air dry bulb	Barom. inch Hg (kPa)
<b>Maximum Power—16th(1HB) Gear</b>									
113.49 (84.63)	7472 (33.24)	5.70 (9.17)	2199	3.82	0.506 (0.308)	13.99 (2.76)	183 (84)	54 (12)	29.06 (98.41)
<b>75% of Pull at Maximum Power—16th(1HB) Gear</b>									
87.53 (65.27)	5593 (24.88)	5.87 (9.45)	2242	2.78	0.545 (0.331)	13.01 (2.56)	183 (84)	59 (15)	29.07 (98.44)
<b>50% of Pull at Maximum Power—16th(1HB) Gear</b>									
59.52 (44.39)	3722 (16.55)	6.00 (9.65)	2272	1.90	0.642 (0.391)	11.03 (2.17)	182 (83)	58 (14)	29.07 (98.44)
<b>75% of Pull at Reduced Engine Speed—20th (2HA) Gear</b>									
87.64 (65.35)	5592 (24.87)	5.88 (9.46)	1731	2.70	0.459 (0.279)	15.45 (3.04)	182 (83)	59 (15)	29.07 (98.44)
<b>50% of Pull at Reduced Engine Speed—20th (2HA) Gear</b>									
59.58 (44.43)	3713 (16.51)	6.02 (9.69)	1758	1.90	0.517 (0.315)	13.69 (2.70)	179 (82)	58 (14)	29.07 (98.44)

**Location of Test:** Nebraska Tractor Test Laboratory, University of Nebraska, Lincoln, Nebraska 68583-0832

**Dates of Test:** October 28–November 19, 1998

**Manufacturer:** AGCO Corporation, Duluth, Georgia 30096

**FUEL OIL AND TIME:** Fuel No. 2 Diesel Specific gravity converted to 60°/60° F (15°/15°C) 0.8506 Fuel weight 7.082 lbs/gal (0.849 kg/l) Oil SAE 15W-40 API service classification CF-4/CE/CD-II Transmission and hydraulic lubricant AGCO Power Fluid 821XL Front axle lubricant AGCO Gear Lube 715 SAE 80W90 Total time engine was operated 36.5 hours.

**ENGINE:** Make Sisu Diesel Type six cylinder vertical with turbocharger Serial No. H 10257 Crankshaft lengthwise Rated engine speed 2200 Bore and stroke 4.251" × 4.72" (108.0 mm × 120.0 mm) Compression ratio 16.5 to 1 Displacement 402 cu in (6600 ml) Starting system 12 volt Lubrication pressure Air cleaner two paper elements and aspirator Oil filter one full flow cartridge Oil cooler engine coolant heat exchanger for crankcase oil, radiator for hydraulic and final drive oil, radiator for transmission oil Fuel filter two paper elements and water separator Muffler vertical Cooling medium temperature control two thermostats and variable speed fan.

**ENGINE OPERATING PARAMETERS: fuel rate:** 57.0-63.0 lb/h (25.9-28.6 kg/h) high idle: 2300-2400 rpm Turbo boost nominal 15.2-18.1 psi (105-125 kPa) as measured 16.6 psi (115 kPa)

**CHASSIS:** Type front wheel assist Serial No. G 203018 Tread width rear 62.1" (1577 mm) to 107.6" (2734 mm) front 60.3" (1532 mm) to 88.3" (2244 mm) Wheel base 117.5" (2985 mm) Hydraulic control system direct engine drive Transmission selective gear fixed ratio with partial (4) range operator controlled powershift Nominal travel speeds mph (km/h) first 1.49 (2.39) second 1.74 (2.80) third 2.06 (3.31) fourth 2.26 (3.63) fifth 2.41 (3.88) sixth 2.64 (4.25) seventh 3.13 (5.03) eighth 3.23 (5.19) ninth 3.66 (5.89) tenth 3.77 (6.07) eleventh 4.39 (7.07) twelfth 4.47 (7.19) thirteenth 4.90 (7.89) fourteenth 5.13 (8.26) fifteenth 5.23 (8.41) sixteenth 5.73 (9.22) seventeenth 6.08 (9.78) eighteenth 6.79 (10.92) nineteenth 7.11 (11.45) twentieth 7.44 (11.97) twenty-first 7.94 (12.78) twenty-second 8.69 (13.99) twenty-third 10.30 (16.57) twenty-fourth 10.63 (17.10) twenty-fifth 12.05 (19.40) twenty-sixth 12.42 (19.99) twenty-seventh 14.47 (23.28) twenty-eighth 14.71 (23.67) twenty-ninth 16.91 (27.21) thirtieth 17.22

**DRAWBAR PERFORMANCE (Unballasted—Front Drive Engaged)**  
**MAXIMUM POWER IN SELECTED GEARS**

Power Hp (kW)	Drawbar pull lbs (kN)	Speed mph (km/h)	Crank- shaft speed rpm	Slip %	Fuel Consumption lb/hp.hr (kg/kW.h)	Temp. °F (°C) cool- ing med	Air dry bulb	Barom. inch Hg (kPa)
6th (2LB) Gear								
93.35 (69.61)	14668 (65.25)	2.39 (3.84)	2232	13.67	0.575 (0.350)	12.32 (2.43)	182 (83)	48 (9)
7th (2LC) Gear								
106.52 (79.43)	13955 (62.07)	2.86 (4.61)	2201	11.14	0.539 (0.328)	13.14 (2.59)	183 (84)	50 (10)
8th (3LA) Gear								
109.47 (81.63)	13853 (61.62)	2.96 (4.77)	2188	10.48	0.526 (0.320)	13.46 (2.65)	183 (84)	51 (11)
9th (2LD) Gear								
115.28 (85.97)	13561 (60.32)	3.19 (5.13)	2057	9.59	0.498 (0.303)	14.22 (2.80)	184 (84)	49 (9)
10th (3LB) Gear								
115.94 (86.46)	13327 (59.28)	3.26 (5.25)	2033	9.43	0.492 (0.299)	14.40 (2.84)	184 (84)	52 (11)
11th (4LA) Gear								
118.66 (88.48)	13034 (57.98)	3.41 (5.49)	1816	8.67	0.463 (0.282)	15.29 (3.01)	184 (84)	53 (12)
12th (3LC) Gear								
118.86 (88.64)	12908 (57.42)	3.45 (5.56)	1806	8.67	0.465 (0.283)	15.24 (3.00)	183 (84)	53 (12)
13th (1HA) Gear								
120.28 (89.69)	11711 (52.09)	3.85 (6.20)	1804	7.11	0.458 (0.279)	15.46 (3.04)	184 (84)	53 (12)
14th (4LB) Gear								
120.44 (89.82)	11115 (49.44)	4.06 (6.54)	1803	6.47	0.456 (0.277)	15.53 (3.06)	184 (84)	55 (13)
15th (3LD) Gear								
121.16 (90.35)	11015 (49.00)	4.12 (6.64)	1803	6.47	0.455 (0.277)	15.57 (3.07)	184 (84)	55 (13)
16th (1HB) Gear								
121.50 (90.60)	9914 (44.10)	4.60 (7.40)	1806	5.41	0.453 (0.276)	15.62 (3.08)	184 (84)	54 (12)
17th (4LC) Gear								
120.76 (90.05)	9291 (41.33)	4.87 (7.84)	1803	5.00	0.456 (0.277)	15.53 (3.06)	184 (84)	56 (13)
18th (1HC) Gear								
121.91 (90.91)	8352 (37.15)	5.47 (8.81)	1802	4.33	0.450 (0.274)	15.72 (3.10)	184 (84)	59 (15)
19th (4LD) Gear								
121.07 (90.28)	7873 (35.02)	5.77 (9.28)	1804	4.16	0.455 (0.277)	15.56 (3.06)	184 (84)	57 (14)
20th (2HA) Gear								
121.88 (90.89)	7557 (33.61)	6.05 (9.73)	1801	3.82	0.453 (0.276)	15.62 (3.08)	184 (84)	59 (15)
21st (1HD) Gear								
122.22 (91.14)	7097 (31.57)	6.46 (10.39)	1802	3.47	0.452 (0.275)	15.67 (3.09)	184 (84)	60 (16)
22nd (2HB) Gear								
121.07 (90.29)	6380 (28.38)	7.12 (11.45)	1800	3.13	0.456 (0.277)	15.52 (3.06)	184 (84)	60 (16)
23rd (2HC) Gear								
119.28 (88.95)	5297 (23.56)	8.45 (13.59)	1799	2.70	0.460 (0.280)	15.40 (3.03)	184 (84)	61 (16)

(27.71) thirty-first 20.02 (32.22) thirty-second 23.43 (37.71) reverse 1.46 (2.35), 1.70 (2.74), 2.02 (3.25), 2.21 (3.56), 2.36 (3.80), 2.58 (4.16), 3.06 (4.93), 3.16 (5.09), 3.59 (5.77), 3.70 (5.95), 4.30 (6.92), 4.37 (7.04), 4.80 (7.73), 5.03 (8.09), 5.12 (8.24), 5.61 (9.03), 5.95 (9.58), 6.65 (10.70), 6.97 (11.22), 7.29 (11.73), 7.78 (12.52), 8.52 (13.71), 10.09 (16.23), 10.41 (16.76), 11.81 (19.00), 12.17 (19.58), 14.17 (22.81), 14.41 (23.19), 16.57 (26.66), 16.86 (27.14), 19.62 (31.57), 22.96 (36.95). **Clutch** multiple wet disc actuated by foot pedal **Brakes** wet multiple disc hydraulically actuated by two foot pedals which can be locked together **Steering** hydrostatic **Power take-off** 540 rpm at 1993 engine rpm or 1000 rpm at 2091 engine rpm **Unladen tractor mass** 16180 lb (7339 kg).

**REPAIRS AND ADJUSTMENTS:** No repairs or adjustments.

**REMARKS:** All test results were determined from observed data obtained in accordance with official OECD, SAE and Nebraska test procedures. For the maximum power tests, the fuel temperature at the injection pump return was maintained at 155° F (68° C). The pull in 5th (1LD) gear (ballasted tractor) was limited to avoid excessive tractor bouncing. The performance results on this summary were taken from OECD tests conducted under the Code II test code procedure.

We, the undersigned, certify that this is a true and correct report of official Tractor No. **1758**, Summary 272, November 24, 1998.

LEONARD L. BASHFORD  
 Director

M.F. KOCHER  
 R.D. GRISSO  
 G.J. HOFFMAN  
 Board of Tractor Test Engineers

# **DRAWBAR PERFORMANCE(Ballasted—Front Drive Disengaged)** **FUEL CONSUMPTION CHARACTERISTICS**

Power Hp (kW)	Drawbar pull lbs (kN)	Speed mph (km/h)	Crank- shaft speed rpm	Slip %	Fuel Consumption lb/hp.hr (kg/kW.h)	Hp.hr/gal (kW.h/l)	Temp.°F (°C) cool- ing med	Air dry bulb	Barom. inch Hg (kPa)
<b>Maximum Power—16th (1HB) Gear</b>									
114.13 (85.10)	7514 (33.42)	5.70 (9.17)	2201	3.20	0.506 (0.308)	14.00 (2.76)	184 (84)	54 (12)	28.82 (97.60)
<b>75% of Pull at Maximum Power—16th (1HB) Gear</b>									
88.10 (65.70)	5634 (25.06)	5.86 (9.44)	2247	2.51	0.545 (0.332)	12.99 (2.56)	182 (83)	52 (11)	28.83 (97.63)
<b>50% of Pull at Maximum Power—16th (1HB) Gear</b>									
59.77 (44.57)	3758 (16.72)	5.96 (9.60)	2269	1.80	0.651 (0.396)	10.88 (2.14)	181 (83)	50 (10)	28.84 (97.66)
<b>75% of Pull at Reduced Engine Speed—21st (1HD) Gear</b>									
88.36 (65.89)	5636 (25.07)	5.88 (9.46)	1631	2.51	0.462 (0.281)	15.33 (3.02)	181 (83)	50 (10)	28.84 (97.66)
<b>50% of Pull at Reduced Engine Speed—21st (1HD) Gear</b>									
59.81 (44.60)	3740 (16.63)	6.00 (9.65)	1651	1.72	0.508 (0.309)	13.95 (2.75)	179 (82)	51 (11)	28.84 (97.66)

## **MAXIMUM POWER IN SELECTED GEARS**

<b>6th (2LB) Gear</b>									
93.36 (69.62)	14836 (65.99)	2.36 (3.80)	2224	13.88	0.565 (0.343)	12.54 (2.47)	183 (84)	43 (6)	28.83 (97.63)
<b>7th (2LC) Gear</b>									
109.80 (81.88)	14331 (63.75)	2.87 (4.62)	2182	9.53	0.528 (0.321)	13.42 (2.64)	183 (84)	44 (7)	28.83 (97.63)
<b>8th (3LA) Gear</b>									
111.55 (83.18)	14080 (62.63)	2.97 (4.78)	2176	9.23	0.519 (0.316)	13.65 (2.69)	183 (84)	48 (9)	28.83 (97.63)
<b>9th (2LD) Gear</b>									
116.62 (86.96)	14009 (62.32)	3.12 (5.02)	2011	8.77	0.489 (0.297)	14.48 (2.85)	184 (84)	46 (8)	28.83 (97.63)
<b>10th (3LB) Gear</b>									
117.75 (87.81)	13607 (60.52)	3.25 (5.22)	2004	8.00	0.485 (0.295)	14.62 (2.88)	185 (85)	50 (10)	28.83 (97.63)
<b>11th (4LA) Gear</b>									
119.01 (88.75)	13006 (57.85)	3.43 (5.52)	1799	6.98	0.463 (0.282)	15.30 (3.01)	185 (85)	51 (11)	28.83 (97.63)
<b>12th (3LC) Gear</b>									
119.96 (89.45)	12897 (57.37)	3.49 (5.61)	1801	6.75	0.459 (0.279)	15.43 (3.04)	184 (84)	54 (12)	28.82 (97.60)
<b>13th (1HA) Gear</b>									
121.33 (90.48)	11712 (52.10)	3.88 (6.25)	1801	5.70	0.453 (0.276)	15.63 (3.08)	184 (84)	54 (12)	28.82 (97.60)
<b>14th (4LB) Gear</b>									
120.68 (89.99)	11056 (49.18)	4.09 (6.59)	1800	5.13	0.457 (0.278)	15.51 (3.05)	185 (85)	53 (12)	28.83 (97.63)
<b>15th (3LD) Gear</b>									
121.56 (90.65)	10069 (48.79)	4.16 (6.69)	1800	5.05	0.451 (0.275)	15.69 (3.09)	185 (85)	54 (12)	28.82 (97.60)
<b>16th (1HB) Gear</b>									
121.48 (90.59)	9880 (43.95)	4.61 (7.42)	1802	4.38	0.453 (0.275)	15.64 (3.08)	185 (85)	55 (13)	28.81 (97.56)
<b>17th (4LC) Gear</b>									
120.88 (90.14)	9255 (41.17)	4.90 (7.88)	1803	3.96	0.456 (0.277)	15.54 (3.06)	184 (84)	52 (11)	28.85 (97.70)
<b>18th (1HC) Gear</b>									
121.38 (90.51)	8287 (36.86)	5.49 (8.84)	1804	3.45	0.454 (0.276)	15.60 (3.07)	184 (84)	53 (12)	28.82 (97.60)
<b>19th (4LD) Gear</b>									
120.31 (89.72)	7834 (34.85)	5.76 (9.27)	1799	3.37	0.460 (0.280)	15.40 (3.03)	184 (84)	52 (11)	28.85 (97.70)
<b>20th (2HA) Gear</b>									
121.27 (90.43)	7523 (33.46)	6.05 (9.73)	1800	3.28	0.455 (0.277)	15.55 (3.06)	183 (84)	52 (11)	28.85 (97.70)
<b>21st (1HD) Gear</b>									
121.80 (90.82)	7079 (31.49)	6.45 (10.38)	1799	3.02	0.453 (0.276)	15.63 (3.08)	184 (84)	49 (9)	28.85 (97.70)
<b>22nd (2HB) Gear</b>									
119.91 (89.42)	6311 (28.07)	7.12 (11.47)	1803	2.76	0.461 (0.281)	15.36 (3.02)	184 (84)	52 (11)	28.85 (97.70)
<b>23rd (2HC) Gear</b>									
117.88 (87.90)	5238 (23.30)	8.44 (13.58)	1802	2.42	0.469 (0.285)	15.11 (2.98)	184 (84)	50 (10)	28.85 (97.70)

# DRAWBAR PERFORMANCE(Ballasted—Front Drive Engaged)

## MAXIMUM POWER IN SELECTED GEARS

Power Hp (kW)	Drawbar pull lbs (kN)	Speed mph (km/h)	Crank- shaft speed rpm	Slip %	Fuel Consumption lb/hp.hr (kg/kW.h)	Hp.hr/gal (kW/l)	Temp.°F (°C) cool- ing med	Air dry bulb	Barom. inch Hg (kPa)
5th (1LD) Gear									
104.50 (77.92)	17639 (78.46)	2.22 (3.58)	2211	10.49	0.539 (0.328)	13.14 (2.59)	182 (83)	55 (13)	28.92 (97.93)
6th (2LB) Gear									
111.36 (83.04)	17072 (75.94)	2.45 (3.94)	2179	9.15	0.521 (0.317)	13.60 (2.68)	183 (84)	58 (14)	28.93 (97.97)
7th (2LC) Gear									
117.66 (87.74)	16752 (74.52)	2.63 (4.24)	1971	8.31	0.485 (0.295)	14.61 (2.88)	182 (83)	60 (16)	28.92 (97.93)
8th (3LA) Gear									
118.71 (88.52)	16100 (71.61)	2.77 (4.45)	1983	7.38	0.480 (0.292)	14.77 (2.91)	182 (83)	62 (17)	28.90 (97.87)
9th (2LD) Gear									
119.90 (89.41)	15727 (69.96)	2.86 (4.60)	1801	6.98	0.460 (0.280)	15.41 (3.04)	183 (84)	61 (16)	28.91 (97.90)
10th (3LB) Gear									
119.45 (89.08)	15076 (67.06)	2.97 (4.78)	1800	6.42	0.461 (0.280)	15.36 (3.03)	183 (84)	63 (17)	28.90 (97.87)
11th (4LA) Gear									
120.35 (89.74)	12848 (57.15)	3.51 (5.65)	1801	4.79	0.456 (0.277)	15.53 (3.06)	184 (84)	63 (17)	28.89 (97.83)
12th (3LC) Gear									
121.09 (90.30)	12736 (56.65)	3.57 (5.74)	1799	4.71	0.454 (0.276)	15.60 (3.07)	184 (84)	64 (18)	28.88 (97.80)
13th (1HA) Gear									
121.83 (90.85)	11577 (51.49)	3.95 (6.35)	1800	4.29	0.452 (0.275)	15.68 (3.09)	184 (84)	66 (19)	28.86 (97.73)
14th (4LB) Gear									
120.82 (90.09)	10922 (48.58)	4.15 (6.68)	1799	3.78	0.455 (0.277)	15.56 (3.07)	184 (84)	64 (18)	28.89 (97.83)
15th (3LD) Gear									
121.52 (90.62)	10819 (48.13)	4.21 (6.78)	1799	3.70	0.454 (0.276)	15.60 (3.07)	184 (84)	65 (18)	28.87 (97.77)
16th (1HB) Gear									
121.76 (90.79)	9802 (43.60)	4.66 (7.50)	1801	3.35	0.450 (0.274)	15.72 (3.10)	185 (85)	66 (19)	28.85 (97.70)
17th (4LC) Gear									
119.97 (89.46)	9115 (40.54)	4.94 (7.94)	1799	3.10	0.458 (0.279)	15.45 (3.04)	184 (84)	67 (19)	28.84 (97.66)
18th (1HC) Gear									
121.42 (90.54)	8260 (36.74)	5.51 (8.87)	1794	2.92	0.455 (0.277)	15.55 (3.06)	184 (84)	67 (19)	28.84 (97.66)
19th (4LD) Gear									
120.08 (89.54)	7716 (34.32)	5.84 (9.39)	1808	2.84	0.457 (0.278)	15.50 (3.05)	184 (84)	67 (19)	28.84 (97.66)
20th (2HA) Gear									
120.90 (90.15)	7442 (33.10)	6.09 (9.80)	1799	2.66	0.455 (0.277)	15.57 (3.07)	184 (84)	67 (19)	28.84 (97.66)
21st (1HD) Gear									
121.50 (90.60)	7017 (31.21)	6.49 (10.45)	1797	2.49	0.454 (0.276)	15.59 (3.07)	184 (84)	67 (19)	28.83 (97.63)
22nd (2HB) Gear									
120.48 (89.84)	6299 (28.02)	7.17 (11.54)	1803	2.14	0.456 (0.277)	15.54 (3.06)	184 (84)	67 (19)	28.84 (97.66)
23rd (2HC) Gear									
118.36 (88.26)	5235 (23.28)	8.48 (13.65)	1800	1.96	0.465 (0.283)	15.22 (3.00)	185 (85)	67 (19)	28.84 (97.66)

# TRACTOR SOUND LEVEL WITH CAB

	Front Wheel Drive Disengaged dB(A)	Engaged dB(A)
At 75% load in 13th(1HA) Gear	74.4	73.8
Bystander	—	—

## TIRES, BALLAST AND WEIGHT

	With Ballast	Without Ballast
<b>Rear Tires</b> —No., size, ply & psi (kPa)	Four 18.4R42; ***, 12(85)	Two 18.4R42; **, 20(140)
<b>Ballast</b> —Duals (total)	1720 lb (780 kg)	None
—Test Equip (total)	95 lb (43 kg)	None
<b>Front Tires</b> —No., size, ply & psi (kPa)	Two 14.9R30; ***, 18(125)	Two 14.9R30; ***, 22(150)
<b>Ballast</b> —Liquid (total)	None	None
—Test Equip (total)	45 lb (20 kg)	None
<b>Height of Drawbar</b>	20.0 in (510 mm)	19.5 in (495 mm)
<b>Static Weight with Operator</b> —Rear	12445 lb (5645 kg)	10630 lb (4822 kg)
—Front	5645 lb (2560 kg)	5600 lb (2540 kg)
—Total	18090 lb (8205 kg)	16230 lb (7362 kg)

## THREE POINT HITCH PERFORMANCE (OECD Static Test)

CATEGORY: III

Quick Attach: None

Maximum Force Exerted Through Whole Range:

i) Opening pressure of relief valve:	14760 lbs (65.7 kN)
Sustained pressure of the open relief valve:	NA
ii) Pump delivery rate at minimum pressure and rated engine speed:	2900 psi (200 bar)
iii) Pump delivery rate at maximum hydraulic power:	29.7 GPM (112.4 l/min)
Delivery pressure:	27.5 GPM (104.1 l/min)
Power:	2300 psi (159 bar)
	36.9 HP (27.5 kW)

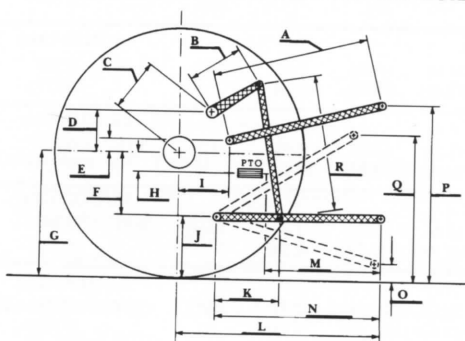
## THREE POINT HITCH PERFORMANCE (SAE Static Test)

Observed Maximum Pressure psi. (bar)	2990 (206)
Location	lift cylinder
Hydraulic oil temperature °F (°C)	148(64)
Location	hydraulic sump
Category	III
Quick attach	No

SAE Static test—system pressure-2690 psi (186 bar)

Hitch point distance to ground level	10.0 (254)	16.0 (406)	24.0 (610)	32.0 (813)	39.7 (1008)
Lift force on frame lb	19665	18945	18621	18135	17379
Lift force on frame (kN)	(87.5)	(84.3)	(82.8)	(80.7)	(77.3)

## HITCH DIMENSIONS AS TESTED—NO LOAD



	inch	mm
A	30.7	781
B	15.2	385
C	20.7	527
D	17.9	455
E	10.8	275
F	12.6	320
G	34.3	870
H	1.5	39
I	17.7	450
J	21.7	550
K	21.6	548
L	49.0	1245
M	24.8	629
N	39.0	991
O	10.0	254
P	48.6	1235
Q	39.1	994
R	33.5	851



AGCO Allis 9735 Diesel

Agricultural Research Division  
Institute of Agriculture and Natural Resources  
University of Nebraska—Lincoln  
Darrell Nelson, Dean and Director