

University of Nebraska - Lincoln

DigitalCommons@University of Nebraska - Lincoln

Nebraska Tractor Tests

Tractor Test and Power Museum, The Lester F.
Larsen

1-1-1998

Test 1759: White 8310 Diesel 32-Speed

Nebraska Tractor Test Lab

University of Nebraska-Lincoln, tractortestlab@unl.edu

Follow this and additional works at: <https://digitalcommons.unl.edu/tractormuseumlit>



Part of the [Energy Systems Commons](#), [History of Science, Technology, and Medicine Commons](#), [Other Mechanical Engineering Commons](#), [Physical Sciences and Mathematics Commons](#), [Science and Mathematics Education Commons](#), and the [United States History Commons](#)

Nebraska Tractor Test Lab, "Test 1759: White 8310 Diesel 32-Speed" (1998). *Nebraska Tractor Tests*. 2067.

<https://digitalcommons.unl.edu/tractormuseumlit/2067>

This Article is brought to you for free and open access by the Tractor Test and Power Museum, The Lester F. Larsen at DigitalCommons@University of Nebraska - Lincoln. It has been accepted for inclusion in Nebraska Tractor Tests by an authorized administrator of DigitalCommons@University of Nebraska - Lincoln.

NEBRASKA OECD TRACTOR TEST 1759—SUMMARY 273

WHITE 8310 DIESEL

32 SPEED

POWER TAKE-OFF PERFORMANCE

Power HP (kW)	Crank shaft speed rpm	Gal/hr (l/h)	lb/hp.hr (kg/kWh)	Hp.hr/gal (kW.h/l)	Mean Atmospheric Conditions
MAXIMUM POWER AND FUEL CONSUMPTION					
Rated Engine Speed (PTO speed—1052 rpm)					
125.79 (93.80)	2201	7.63 (28.88)	0.430 (0.261)	16.48 (3.25)	
Maximum Power (2 hours)					
135.82 (101.28)	2091	7.96 (30.13)	0.415 (0.252)	17.06 (3.36)	
Standard Power Take-off Speed (1000 rpm)					
135.82 (101.28)	2091	7.96 (30.13)	0.415 (0.252)	17.06 (3.36)	

VARYING POWER AND FUEL CONSUMPTION

125.79 (93.80)	2201	7.36 (28.88)	0.430 (0.261)	16.48 (3.25)	Air temperature
108.28 (80.75)	2233	6.82 (25.82)	0.446 (0.271)	15.88 (3.13)	78°F (25°C)
83.55 (62.30)	2294	5.63 (21.33)	0.478 (0.290)	14.83 (2.92)	Relative humidity
56.83 (42.38)	2342	4.53 (17.16)	0.565 (0.344)	12.54 (2.47)	60%
29.03 (21.65)	2384	3.39 (12.83)	0.827 (0.503)	8.57 (1.69)	Barometer
1.10 (0.82)	2421	2.29 (8.66)	14.695 (8.939)	0.48 (0.09)	29.01"Hg (98.24 kPa)

Maximum Torque 420 lb.-ft. (570 Nm) at 1500 rpm

Maximum Torque Rise 40.1%

Torque rise at 1800 engine rpm – 30%

DRAWBAR PERFORMANCE (Unballasted—Front Drive Engaged)

FUEL CONSUMPTION CHARACTERISTICS

Power Hp (kW)	Drawbar pull lbs (kN)	Speed mph (km/h)	Crank- shaft speed rpm	Slip %	Fuel Consumption lb/hp.hr (kg/kWh)	Hp.hr/gal (kW.h/l)	Temp. °F (°C) cool- ing med	Air dry bulb	Barom. inch Hg (kPa)
Maximum Power—16th(1HB) Gear									
110.56 (82.44)	7276 (32.36)	5.70 (9.17)	2197	3.53	0.487 (0.296)	14.54 (2.86)	187 (86)	68 (20)	28.67 (97.09)
75% of Pull at Maximum Power—16th(1HB) Gear									
86.12 (64.22)	5453 (24.25)	5.92 (9.53)	2260	2.49	0.513 (0.312)	13.80 (2.72)	185 (85)	70 (21)	28.70 (97.19)
50% of Pull at Maximum Power—16th(1HB) Gear									
59.55 (44.41)	3646 (16.22)	6.12 (9.86)	2319	1.70	0.597 (0.363)	11.86 (2.34)	180 (82)	71 (22)	28.73 (97.29)
75% of Pull at Reduced Engine Speed—20th(2LA) Gear									
86.32 (64.37)	5476 (24.36)	5.91 (9.51)	1739	2.49	0.456 (0.277)	15.54 (3.06)	184 (84)	70 (21)	28.72 (97.26)
50% of Pull at Reduced Engine Speed—20th(2LA) Gear									
59.55 (44.40)	3655 (16.26)	6.11 (9.83)	1783	1.70	0.502 (0.305)	14.10 (2.78)	180 (82)	71 (22)	28.73 (97.29)

Location of Test: Nebraska Tractor Test Laboratory, University of Nebraska, Lincoln, Nebraska 68583-0832

Dates of Test: October 27-November 19, 1998

Manufacturer: AGCO Corporation, Duluth, Georgia 30096

FUEL OIL AND TIME: Fuel No. 2 Diesel Specific gravity converted to 60°/60° F (15°/15°C) 0.8506 Fuel weight 7.082 lbs/gal (0.849 kg/l) Oil SAE 15W-40 API service classification CF-4/CE/CD-II Transmission and hydraulic lubricant AGCO Power Fluid 821XL Front axle lubricant AGCO Gear Lube 715 SAE 80W90 Total time engine was operated 33.5 hours.

ENGINE: Make Cummins Diesel Type six cylinder vertical with turbocharger Serial No. 21323222 Crankshaft lengthwise Rated engine speed 2200 Bore and stroke 4.016" × 4.72" (102.0 mm × 120.0 mm) Compression ratio 17.4 to 1 Displacement 359 cu in (5880 ml) Starting system 12 volt Lubrication pressure Air cleaner two paper elements and aspirator Oil filter one full flow cartridge Oil cooler engine coolant heat exchanger for crankcase oil, radiator for hydraulic and final drive oil, radiator for transmission oil Fuel filter two paper elements and water separator Muffler vertical Cooling medium temperature control two thermostats and variable speed fan.

ENGINE OPERATING PARAMETERS: fuel rate: 53.8-59.5 lb/h (24.4-27.0 kg/h) high idle: 2350-2450 rpm Turbo boost nominal 18.8-20.3 psi (130-140 kPa) as measured 19.6 psi (135 kPa)

CHASSIS: Type front wheel assist Serial No. G 202017 Tread width rear 62.1" (1577 mm) to 107.6" (2734 mm) front 60.3" (1532 mm) to 88.3" (2244 mm) Wheel base 108.3" (2750 mm) Hydraulic control system direct engine drive Transmission selective gear fixed ratio with partial (4) range operator controlled powershift Nominal travel speeds mph (km/h) first 1.49 (2.39) second 1.74 (2.80) third 2.06 (3.31) fourth 2.26 (3.63) fifth 2.41 (3.88) sixth 2.64 (4.25) seventh 3.13 (5.03) eighth 3.23 (5.19) ninth 3.66 (5.89) tenth 3.77 (6.07) eleventh 4.39 (7.07) twelfth 4.47 (7.19) thirteenth 4.90 (7.89) fourteenth 5.13 (8.26) fifteenth 5.23 (8.41) sixteenth 5.73 (9.22) seventeenth 6.08 (9.78) eighteenth 6.79 (10.92) nineteenth 7.11 (11.45) twentieth 7.44 (11.97) twenty-first 7.94 (12.78) twenty-second 8.69 (13.99) twenty-third 10.30 (16.57) twenty-fourth 10.63 (17.10) twenty-fifth 12.05 (19.40) twenty-sixth 12.42 (19.99) twenty-seventh 14.47 (23.28) twenty-eighth 14.71 (23.67) twenty-ninth 16.91 (27.21) thirtieth 17.22 (27.71) thirty-first 20.02 (32.22) thirty-second 23.43

DRAWBAR PERFORMANCE (Unballasted—Front Drive Engaged) **MAXIMUM POWER IN SELECTED GEARS**

Power Hp (kW)	Drawbar pull lbs (kN)	Speed mph (km/h)	Crank- shaft speed rpm	Slip %	Fuel Consumption lb/hr.hr (kg/kWh)	Temp. °F (°C) cool- ing med	Air dry bulb	Barom. inch Hg (kPa)	
6th(2LB) Gear									
91.90 (68.53)	14734 (65.54)	2.34 (3.76)	2221	14.86	0.550 (0.334)	12.88 (2.54)	184 (84)	64 (18)	28.81 (97.56)
7th(2LC) Gear									
106.39 (79.33)	14316 (63.68)	2.79 (4.49)	2185	12.68	0.521 (0.317)	13.58 (2.68)	185 (85)	61 (16)	28.65 (97.02)
8th(3LA) Gear									
108.43 (80.85)	13733 (61.09)	2.96 (4.77)	2190	10.51	0.506 (0.308)	13.99 (2.76)	186 (85)	62 (17)	28.66 (97.05)
9th(2LD) Gear									
115.68 (86.27)	13291 (59.12)	3.26 (5.25)	2093	8.79	0.487 (0.296)	14.54 (2.86)	186 (86)	61 (16)	28.65 (97.02)
10th(3LB) Gear									
116.07 (86.55)	12882 (57.30)	3.38 (5.44)	2088	8.64	0.486 (0.295)	14.58 (2.87)	187 (86)	62 (17)	28.66 (97.05)
11th(4LA) Gear									
118.49 (88.36)	11004 (48.95)	4.04 (6.50)	2090	6.11	0.477 (0.290)	14.85 (2.93)	186 (85)	62 (17)	28.66 (97.05)
12th(3LC) Gear									
117.37 (87.52)	10713 (47.65)	4.11 (6.61)	2091	5.80	0.479 (0.291)	14.79 (2.91)	186 (86)	63 (17)	28.66 (97.05)
13th(1HA) Gear									
118.56 (88.41)	9791 (43.55)	4.54 (7.31)	2085	5.13	0.475 (0.289)	14.90 (2.94)	187 (86)	64 (18)	28.66 (97.05)
14th(4LB) Gear									
117.62 (87.71)	9211 (40.97)	4.79 (7.71)	2088	4.72	0.479 (0.292)	14.77 (2.91)	186 (85)	66 (19)	28.66 (97.05)
15th(3LD) Gear									
117.43 (87.57)	9040 (40.21)	4.87 (7.84)	2090	4.63	0.477 (0.290)	14.83 (2.92)	187 (86)	67 (19)	28.67 (97.09)
16th(1HB) Gear									
119.19 (88.88)	8287 (36.86)	5.39 (8.68)	2093	4.21	0.471 (0.286)	15.05 (2.96)	187 (86)	68 (20)	28.67 (97.09)
17th(4LC) Gear									
116.94 (87.20)	7669 (34.11)	5.72 (9.20)	2090	3.62	0.478 (0.291)	14.83 (2.92)	187 (86)	66 (19)	28.67 (97.09)
18th(1HC) Gear									
118.06 (88.04)	6881 (30.61)	6.43 (10.35)	2096	3.19	0.475 (0.289)	14.92 (2.94)	188 (87)	69 (21)	28.67 (97.09)
19th(4LD) Gear									
116.13 (86.60)	6462 (28.74)	6.74 (10.85)	2089	3.08	0.487 (0.296)	14.54 (2.86)	187 (86)	69 (21)	28.68 (97.12)
20th(2HA) Gear									
118.69 (88.51)	6284 (27.95)	7.08 (11.40)	2094	2.83	0.476 (0.289)	14.88 (2.93)	186 (85)	71 (22)	28.68 (97.12)
21st(1HD) Gear									
118.13 (88.09)	5866 (26.09)	7.55 (12.15)	2090	2.58	0.476 (0.289)	14.88 (2.93)	186 (85)	72 (22)	28.67 (97.09)
22nd(2HB) Gear									
117.40 (87.55)	5298 (23.56)	8.31 (13.37)	2090	2.41	0.482 (0.293)	14.69 (2.89)	187 (86)	73 (23)	28.67 (97.09)

TRACTOR SOUND LEVEL WITH CAB	Front Wheel Drive	
	Disengaged dB(A)	Engaged dB(A)
At 75% load in 13th(1HA) Gear	75.5	74.7
Bystander	—	—

TIRES, BALLAST AND WEIGHT		
Rear Tires —No., size, ply & psi (kPa)	With Ballast	Without Ballast
Ballast —Duals (total)	Four 18.4R42; ***, 12(85)	Two 18.4R42; ***, 20(140)
—Test Equip (total)	1720 lb (780 kg)	None
Front Tires —No., size, ply & psi (kPa)	155 lb (71 kg)	None
Ballast —Liquid (total)	Two 14.9R30; ***, 18(125)	Two 14.9R30; ***, 22(150)
—Test Equip (total)	None	None
Height of Drawbar	25 lb (11 kg)	None
Static Weight with Operator —Rear	20.0 in (510 mm)	19.5 in (495 mm)
—Front	12440 lb (5643 kg)	10565 lb (4792 kg)
—Total	5805 lb (2633 kg)	5780 lb (2622 kg)
	18245 lb (8276 kg)	16345 lb (7414 kg)

(37.71) reverse 1.46 (2.35), 1.70 (2.74), 2.02 (3.25), 2.21 (3.56), 2.36 (3.80), 2.58 (4.16), 3.06 (4.93), 3.16 (5.09), 3.59 (5.77), 3.70 (5.95), 4.30 (6.92), 4.37 (7.04), 4.80 (7.73), 5.03 (8.09), 5.12 (8.24), 5.61 (9.03), 5.95 (9.58), 6.65 (10.70), 6.97 (11.22), 7.29 (11.73), 7.78 (12.52), 8.52 (13.71), 10.09 (16.23), 10.41 (16.76), 11.81 (19.00), 12.17 (19.58), 14.17 (22.81), 14.41 (23.19), 16.57 (26.66), 16.86 (27.14), 19.62 (31.57), 22.96 (36.95) **Clutch** multiple wet discs actuated by foot pedal **Brakes** wet multiple disc hydraulically actuated by two foot pedals which can be locked together **Steering** hydrostatic **Power take-off** 540 rpm at 1993 engine rpm or 1000 rpm at 2091 engine rpm **Unladen tractor mass** 16180 lb (7339 kg).

REPAIRS AND ADJUSTMENTS: No repairs or adjustments.

REMARKS: All test results were determined from observed data obtained in accordance with official OECD, SAE and Nebraska test procedures. For the maximum power tests, the fuel temperature at the injection pump inlet was maintained at 118° F (48° C). The pull in 5th (1LD) gear (ballasted tractor) was limited to avoid excessive tractor bouncing. The performance results on this summary were taken from OECD tests conducted under the Code II test code procedure.

We, the undersigned, certify that this is a true and correct report of official Tractor No. **1759**, Summary 273, November 24, 1998.

LEONARD L. BASHFORD
 Director

M.F. KOCHER
 R.D. GRISSO
 G.J. HOFFMAN
 Board of Tractor Test Engineers

DRAWBAR PERFORMANCE (Ballasted—Front Drive Disengaged)
FUEL CONSUMPTION CHARACTERISTICS

Power Hp (kW)	Drawbar pull lbs (kN)	Speed mph (km/h)	Crank- shaft speed rpm	Slip %	Fuel Consumption lb/hp.hr (kg/kW.h)	Hp.hr/gal (kW.h/l)	Temp. °F (°C) cool- ing med	Air dry bulb	Barom. inch Hg (kPa)
Maximum Power—16th(1HB) Gear									
111.11 (82.85)	7335 (32.63)	5.68 (9.14)	2198	2.86	0.486 (0.296)	14.58 (2.87)	184 (84)	40 (4)	29.11 (98.58)
75% of Pull at Maximum Power—16th(1HB) Gear									
86.04 (64.15)	5509 (24.51)	5.86 (9.42)	2253	2.34	0.515 (0.313)	13.75 (2.71)	182 (83)	41 (5)	29.07 (98.44)
50% of Pull at Maximum Power—16th(1HB) Gear									
59.20 (44.15)*	3676 (16.35)	6.04 (9.72)	2310	1.82	0.601 (0.366)	11.79 (2.32)	181 (83)	41 (5)	29.07 (98.44)
75% of Pull at Reduced Engine Speed—21st(1HD) Gear									
85.66 (63.87)	5492 (24.43)	5.85 (9.41)	1628	2.34	0.447 (0.272)	15.85 (3.12)	181 (83)	41 (5)	29.08 (98.48)
50% of Pull at Reduced Engine Speed—21st(1HD) Gear									
59.19 (44.14)	3659 (16.28)	6.07 (9.76)	1679	1.73	0.503 (0.306)	14.09 (2.77)	179 (82)	41 (5)	29.08 (98.48)

MAXIMUM POWER IN SELECTED GEARS

95.77 (71.42)	15401 (68.51)	2.33 (3.75)	2219	6th(2LB) Gear		13.18 (2.60)	185 (85)	42 (6)	29.13 (98.65)
113.16 (84.38)	14854 (66.07)	2.86 (4.60)	2168	7th(2LC) Gear		14.09 (2.78)	186 (85)	41 (5)	29.12 (98.61)
116.18 (86.64)	14738 (65.56)	2.96 (4.76)	2159	8th(3LA) Gear		14.48 (2.85)	186 (85)	41 (5)	29.10 (98.54)
120.05 (89.52)	13591 (60.46)	3.31 (5.33)	2087	9th(3LD) Gear		14.96 (2.95)	184 (84)	41 (5)	29.11 (98.58)
120.39 (89.77)	13132 (58.41)	3.44 (5.53)	2088	10th(3LB) Gear		15.01 (2.96)	186 (85)	41 (5)	29.10 (98.54)
120.65 (89.97)	11154 (49.62)	4.06 (6.53)	2088	11th(4LA) Gear		15.00 (2.96)	186 (85)	41 (5)	29.10 (98.54)
120.14 (89.59)	10914 (48.55)	4.13 (6.64)	2090	12th(3LC) Gear		14.96 (2.95)	186 (85)	41 (5)	29.10 (98.54)
121.50 (90.60)	9980 (44.39)	4.57 (7.35)	2090	13th(1HA) Gear		15.19 (2.99)	186 (85)	40 (4)	29.11 (98.58)
120.35 (89.74)	9438 (41.98)	4.78 (7.70)	2085	14th(4LB) Gear		15.07 (2.97)	187 (86)	41 (5)	29.11 (98.58)
120.09 (89.55)	9262 (41.20)	4.86 (7.82)	2086	15th(3LD) Gear		14.99 (2.95)	186 (85)	41 (5)	29.10 (98.54)
121.16 (90.35)	8453 (37.60)	5.38 (8.65)	2089	16th(1HB) Gear		15.19 (2.99)	186 (85)	41 (5)	29.10 (98.54)
117.31 (87.48)	7699 (34.25)	5.71 (9.19)	2094	17th(4LC) Gear		14.72 (2.90)	184 (84)	40 (4)	29.12 (98.61)
119.33 (88.98)	6993 (31.11)	6.40 (10.30)	2095	18th(1HC) Gear		15.07 (2.97)	183 (84)	40 (4)	29.13 (98.65)
116.41 (86.81)	6498 (28.90)	6.72 (10.81)	2095	19th(4LD) Gear		14.62 (2.88)	185 (85)	40 (4)	29.12 (98.61)
119.44 (89.07)	6362 (28.30)	7.04 (11.33)	2093	20th(2HA) Gear		14.97 (2.95)	183 (84)	40 (4)	29.14 (98.68)
118.22 (88.16)	5906 (26.27)	7.51 (12.08)	2092	21st(1HD) Gear		14.88 (2.93)	184 (84)	40 (4)	29.13 (98.65)
117.03 (87.27)	5312 (23.63)	8.26 (13.30)	2092	22nd(2HB) Gear		14.62 (2.88)	185 (85)	40 (4)	29.14 (98.68)

DRAWBAR PERFORMANCE(Ballasted—Front Drive Engaged)
MAXIMUM POWER IN SELECTED GEARS

Power Hp (kW)	Drawbar pull lbs (kN)	Speed mph (km/h)	Crank- shaft speed rpm	Slip %	Fuel Consumption lb/hp.hr (kg/kW.h)	Hp.hr/gal (kW.h/l)	Temp.°F (°C) cool- ing med	Air dry bulb	Barom. inch Hg (kPa)
5th(1LD) Gear									
105.62 (78.76)	18047 (80.27)	2.19 (3.53)	2201	10.86	0.504 (0.307)	14.06 (2.77)	183 (84)	42 (6)	29.12 (98.61)
6th(2LB) Gear									
114.58 (85.44)	17710 (78.78)	2.43 (3.90)	2171	9.08	0.489 (0.297)	14.50 (2.86)	184 (84)	42 (6)	29.12 (98.61)
7th(2LC) Gear									
119.31 (88.97)	15692 • (69.80)	2.85 (4.59)	2090	6.04	0.473 (0.288)	14.97 (2.95)	183 (84)	42 (6)	29.11 (98.58)
8th(3LA) Gear									
121.41 (90.54)	15416 (68.57)	2.95 (4.75)	2089	5.88	0.464 (0.282)	15.27 (3.01)	183 (84)	41 (5)	29.10 (98.54)
9th(2LD) Gear									
122.14 (91.08)	13527 (60.18)	3.39 (5.45)	2092	4.81	0.461 (0.280)	15.36 (3.03)	186 (85)	42 (6)	29.11 (98.58)
10th(3LB) Gear									
122.17 (91.10)	13043 (58.01)	3.51 (5.65)	2093	4.40	0.462 (0.281)	15.35 (3.02)	185 (85)	41 (5)	29.09 (98.51)
11th(4LA) Gear									
122.48 (91.33)	11159 (49.64)	4.12 (6.62)	2092	3.73	0.461 (0.281)	15.35 (3.02)	186 (85)	41 (5)	29.07 (98.44)
12th(3LC) Gear									
120.69 (90.00)	10830 (48.17)	4.18 (6.73)	2091	3.56	0.466 (0.284)	15.19 (2.99)	185 (85)	41 (5)	29.08 (98.48)
13th(1HA) Gear									
122.69 (91.49)	9931 (44.17)	4.63 (7.46)	2100	3.30	0.459 (0.279)	15.44 (3.04)	187 (86)	41 (5)	29.07 (98.44)
14th(4LB) Gear									
121.48 (90.59)	9415 (41.88)	4.84 (7.79)	2088	3.04	0.465 (0.283)	15.24 (3.00)	186 (85)	41 (5)	29.07 (98.44)
15th(3LD) Gear									
121.18 (90.36)	9205 (40.95)	4.94 (7.94)	2096	2.96	0.465 (0.283)	15.24 (3.00)	187 (86)	41 (5)	29.09 (98.51)
16th(1HB) Gear									
121.82 (90.84)	8393 (37.33)	5.44 (8.76)	2096	2.61	0.462 (0.281)	15.32 (3.02)	185 (85)	41 (5)	29.07 (98.44)
17th(4LC) Gear									
118.28 (88.20)	7696 (34.23)	5.76 (9.28)	2095	2.44	0.476 (0.290)	14.88 (2.93)	184 (84)	41 (5)	29.09 (98.51)
18th(1HC) Gear									
119.09 (88.81)	6924 (30.80)	6.45 (10.38)	2095	2.27	0.472 (0.287)	15.01 (2.96)	184 (84)	40 (4)	29.10 (98.54)
19th(4LD) Gear									
116.48 (86.37)	6452 (28.70)	6.77 (10.89)	2095	2.18	0.482 (0.293)	14.70 (2.90)	183 (84)	41 (5)	29.09 (98.51)
20th(2HA) Gear									
119.56 (89.16)	6320 (28.11)	7.09 (11.42)	2094	2.09	0.470 (0.286)	15.07 (2.97)	185 (85)	40 (4)	29.10 (98.54)
21st(1HD) Gear									
118.28 (88.20)	5849 (26.02)	7.58 (12.20)	2098	2.00	0.474 (0.288)	14.94 (2.95)	186 (85)	40 (4)	29.10 (98.54)
22nd(2HB) Gear									
116.83 (87.13)	5253 (23.37)	8.34 (13.43)	2097	1.92	0.482 (0.294)	14.68 (2.89)	185 (85)	40 (4)	29.10 (98.54)

THREE POINT HITCH PERFORMANCE (OECD Static Test)

CATEGORY: III

Quick Attach: None

Maximum Force Exerted Through Whole Range:

14760 lbs (65.7 kN)

i) Opening pressure of relief valve:

NA

Sustained pressure of the open relief valve:

2900 psi (200 bar)

ii) Pump delivery rate at minimum pressure and rated engine speed:

29.1 GPM (110.2 l/min)

iii) Pump delivery rate at maximum

hydraulic power:

25.3 GPM (95.8 l/min)

Delivery pressure:

2550 psi (176 bar)

Power:

37.6 HP (28.1 kW)

THREE POINT HITCH PERFORMANCE (SAE Static Test)

Observed Maximum Pressure psi. (bar)

2990 (206)

Location

lift cylinder

Hydraulic oil temperature °F (°C)

148(64)

Location

hydraulic sump

Category

III

Quick attach

No

SAE Static test—system pressure-2690 psi (186 bar)

Hitch point distance to ground level

10.0 (254)

16.0 (406)

24.0 (610)

32.0 (813)

39.7 (1008)

Lift force on frame lb

19665

18945

18621

18135

17379

Lift force on frame (kN)

(87.5)

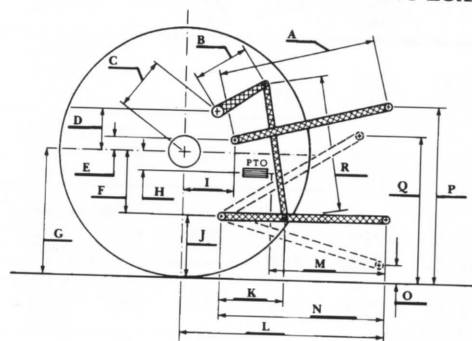
(84.3)

(82.8)

(80.7)

(77.3)

HITCH DIMENSIONS AS TESTED—NO LOAD



	inch	mm
A	30.7	781
B	15.2	385
C	20.7	527
D	17.9	455
E	10.8	275
F	12.6	320
G	34.3	870
H	1.5	39
I	17.7	450
J	21.7	550
K	21.6	548
L	49.0	1245
M	24.8	629
N	39.0	991
O	10.0	254
P	48.6	1235
Q	39.1	994
R	33.5	851



White 8310 Diesel

Agricultural Research Division
Institute of Agriculture and Natural Resources
University of Nebraska-Lincoln
Darrell Nelson, Dean and Director