

University of Nebraska - Lincoln

DigitalCommons@University of Nebraska - Lincoln

Historical Materials from University of
Nebraska-Lincoln Extension

Extension

5-1946

EC165 Grass Down Field Waterways

D. E. Hutchinson

Follow this and additional works at: <https://digitalcommons.unl.edu/extensionhist>

Hutchinson, D. E., "EC165 Grass Down Field Waterways" (1946). *Historical Materials from University of Nebraska-Lincoln Extension*. 2122.

<https://digitalcommons.unl.edu/extensionhist/2122>

This Article is brought to you for free and open access by the Extension at DigitalCommons@University of Nebraska - Lincoln. It has been accepted for inclusion in Historical Materials from University of Nebraska-Lincoln Extension by an authorized administrator of DigitalCommons@University of Nebraska - Lincoln.

Copy 1

AGRI

E.C. #165

S
85
E7
#165

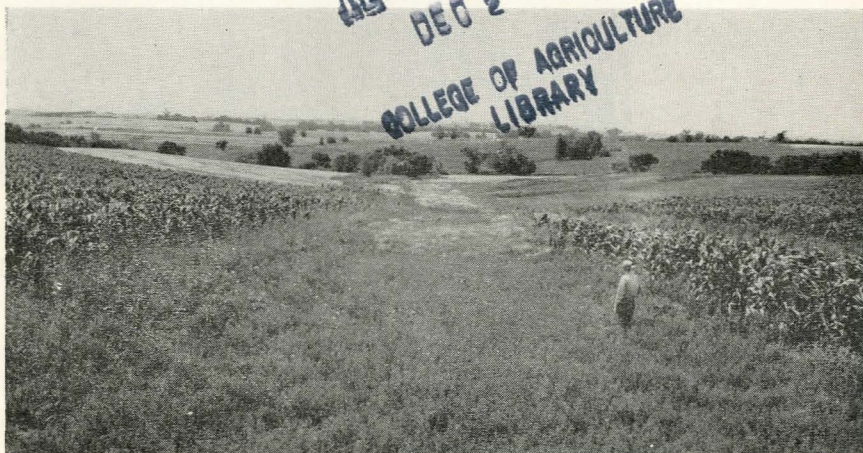
COLLEGE OF AGRICULTURE
LIBRARY
LINCOLN, NEBRASKA

Grass Down

Field Waterways

RECEIVED
DEC 2 1970

COLLEGE OF AGRICULTURE
LIBRARY



The Soil Conservation Service, U.S.D.A., The Extension Service,
University of Nebraska College of Agriculture, and The
United States

May, 1946

UNIVERSITY OF NEBRASKA-LINCOLN



R02378 94505

Cooperating

E.C. 165

Grass Down Field Waterways

in the Bromegrass Area of the State

D. E. Hutchinson

PREPARE THE WATERWAY



Smooth the steep banks of the gully with a blade, plow or disc. Shape the bottom in a broad curve. If smoothing is not necessary, subtile or disc. Make the waterway two to five rods wide.

Build dikes with a plow or blade along the sides to keep out runoff until grass is established. If possible make the dike by throwing the dirt up from below.



MANURE

Apply manure to the waterway and disc it into the seedbed.

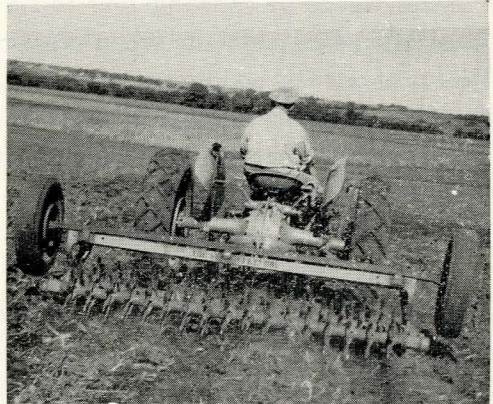


SEED

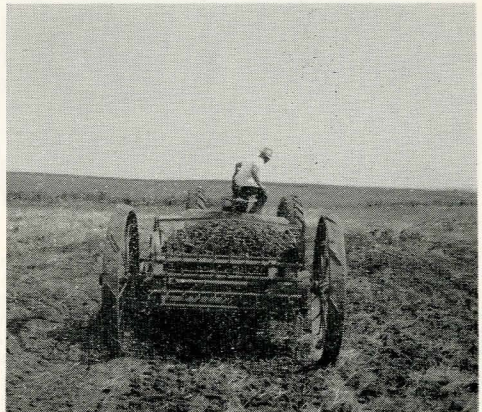
Drill or broadcast 30 pounds of brome or brome and western wheatgrass, and two or three pounds of alfalfa or red clover per acre. If seeded in the fall, two pecks of oats or barley should be added per acre. If seeded in the spring, three to five pounds of switch grass, if available, should be added per acre.

Seed August 1 to September 15 (fall seeding), or March 15 to April 15 (spring seeding), on a firm, manured seedbed.

PACK AND MULCH



Use a land roller or treader after seeding and apply a mulch of corn cobs, manure or straw.



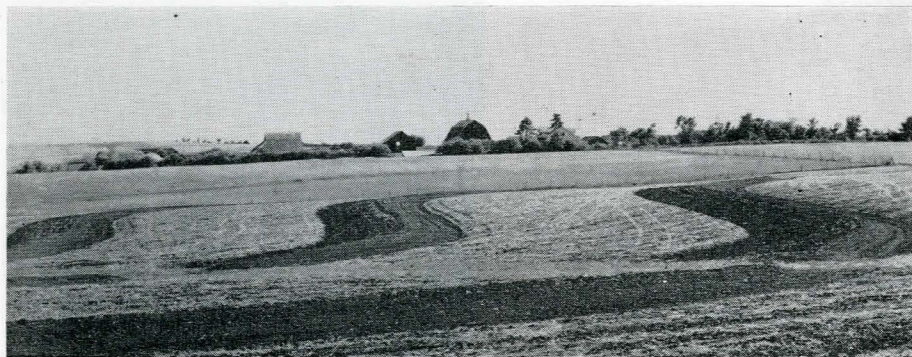


REPAIR WITH SOD

The best and cheapest way to control small gullies is to repair damage with chunks of sod as shown at the left. Set the sod pieces well so that the grass roots can grow and tie the sod down.

MAINTAIN

Control weeds by mowing four to six inches high, and often.
 Raise tillage implements when crossing the waterway.
 Repair at once by sodding or reseeding any breaks that occur in the grass.
 Level the dikes with a blade, plow, or disc when the grass is established.
 Do not use waterways for roads or stock lanes.
 Harvest the grass for hay or seed.
 When waterway is completed, it will serve as a terrace outlet.



Distributed in furtherance of Acts of May 8 and June 30, 1914.
 Extension Service of the University of Nebraska College of Agriculture, the U. S. Department of Agriculture cooperating. W. H. Brokaw, Director, Lincoln, Nebraska. (4-46-30M)