

University of Nebraska - Lincoln

DigitalCommons@University of Nebraska - Lincoln

Great Plains Quarterly

Great Plains Studies, Center for

Fall 2000

Message from the Director- Fall 2000

James Stubbendieck

Center for Great Plains Studies, jstubbendieck@unl.edu

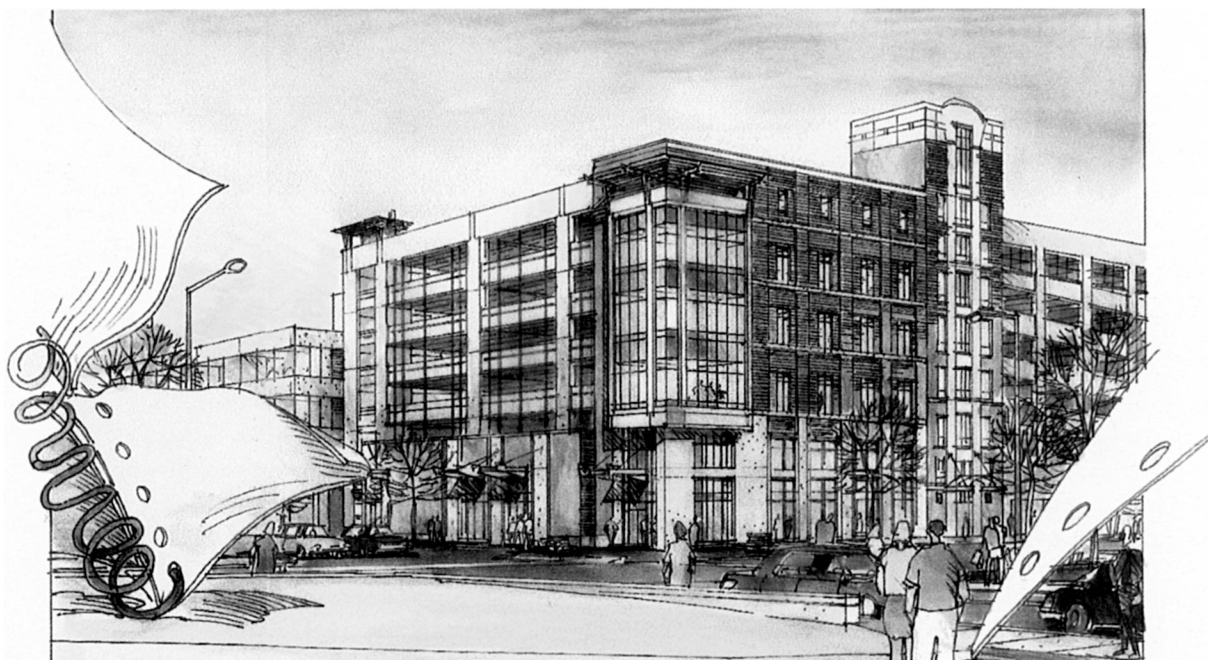
Follow this and additional works at: <https://digitalcommons.unl.edu/greatplainsquarterly>



Part of the [Other International and Area Studies Commons](#)

Stubbendieck, James, "Message from the Director- Fall 2000" (2000). *Great Plains Quarterly*. 2130.
<https://digitalcommons.unl.edu/greatplainsquarterly/2130>

This Article is brought to you for free and open access by the Great Plains Studies, Center for at DigitalCommons@University of Nebraska - Lincoln. It has been accepted for inclusion in Great Plains Quarterly by an authorized administrator of DigitalCommons@University of Nebraska - Lincoln.



View of the Center's new home at 12th & Q Streets, Lincoln, Nebraska. Drawing by Tom Laging.

MESSAGE FROM THE DIRECTOR

The Center for Great Plains Studies recently completed moving into its new building located between the south edge of the University of Nebraska campus and downtown Lincoln. For the first time in many years, all of the faculty, staff, and programs of the Center are in the same physical structure. The galleries of our Great Plains Art Collection are expanded in size and in a much more accessible location. Center office and work space are more than tripled providing many opportunities for new programs. *Plains Song Review*, an interdisciplinary undergraduate literary journal, will be published by the Center starting in 2001. Established services and programs including *Great Plains Quarterly*, *Great Plains Research*, and the *Encyclopedia of the Great Plains* will have the opportunity to grow and improve.

The Center for Great Plains Studies is the oldest and largest interdisciplinary, regional research and teaching center in the United States. The combined commitment of more than \$5 million by the University of Nebraska and the University of Nebraska Foundation demonstrates the significance of the Center's mission to the University of Nebraska and the region. We will continue to foster the study of the relationships between the environment and the cultures brought to the Great Plains by its various inhabitants, as well as evaluating the implications of these relationships for the future. I want to extend an open invitation to all readers of *Great Plains Quarterly* to visit the Center at its new location at 1155 Q Street, Hewit Place.

JAMES STUBBENDIECK, DIRECTOR
Center for Great Plains Studies