

University of Nebraska - Lincoln

DigitalCommons@University of Nebraska - Lincoln

Historical Materials from University of
Nebraska-Lincoln Extension

Extension

3-1947

EC170 Improved Irrigation

Follow this and additional works at: <https://digitalcommons.unl.edu/extensionhist>

"EC170 Improved Irrigation" (1947). *Historical Materials from University of Nebraska-Lincoln Extension*. 2150.

<https://digitalcommons.unl.edu/extensionhist/2150>

This Article is brought to you for free and open access by the Extension at DigitalCommons@University of Nebraska - Lincoln. It has been accepted for inclusion in Historical Materials from University of Nebraska-Lincoln Extension by an authorized administrator of DigitalCommons@University of Nebraska - Lincoln.

AGRI

S March 1947

E. C. 170

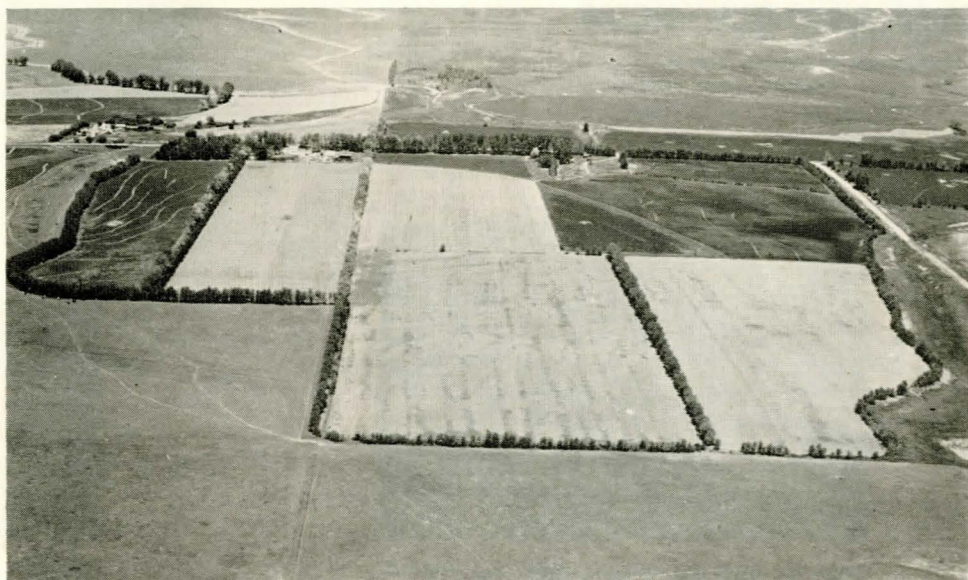
85

E7

#170

Improved Irrigation

23



Prepared by The Soil Cor
Agricultural College Exten
of Agriculture Cooperating

UNIVERSITY OF NEBRASKA-LINCOLN



R02378 94602

sity of Nebraska
tates Department

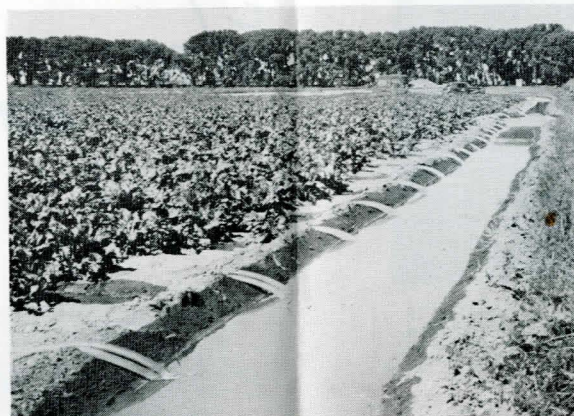
Some Important Features of Complete Conservation Plans for Irrigated Farms

Prepare the Land



Conservation District Engineers will help you run the lines.

Handle the Water



Siphon tubes control the amount of water applied to each row.

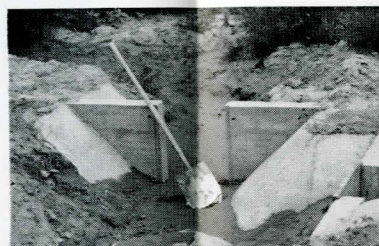
Check Erosion



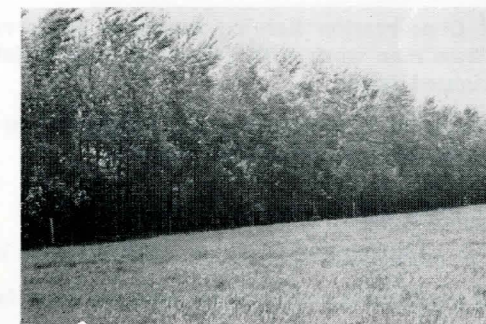
Rough tillage furnishes protection against wind erosion.



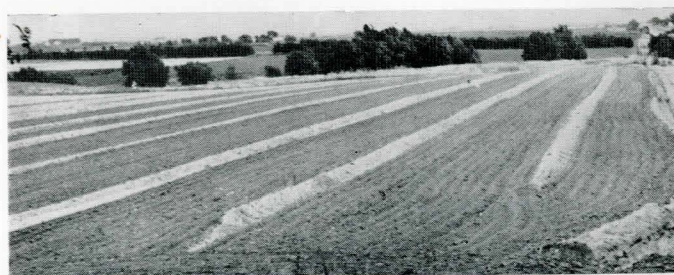
Detailed surveys and planning are needed before starting major leveling jobs.



Drops, turnouts, and flumes distribute water to each field.



Shelterbelts will help check wind erosion.



Border Irrigation is satisfactory for pasture and brome-alfalfa hay fields. The field should be uniform in slope.



Contour Laterals are used in irrigating steeper slopes.



Winter cover crops protect land from blowing.

How Your Soil Conservation District and County Extension Service Can Help You



Use sweet clover in the crop rotation to increase soil fertility. Nitrogen supplied by biennial sweet clover is worth \$10 to \$20 per acre.

The district is a legal sub-division of the state, and is directed by a Board of Supervisors made up of five local landowners.

The Soil Conservation Service furnishes conservationists and engineers to the district. These men work with you on surveys to establish a complete conservation plan on irrigated farms.

The Agricultural Extension Service furnishes you the latest information on crop rotations, fertilizers and irrigation practices.

Steps in getting assistance from the district:

Fill out an application card at the district office or the County Extension office.

Work out a complete conservation plan for your farm.



Brome and alfalfa for hay and pasture will help maintain soil fertility and furnish feed.