

University of Nebraska - Lincoln

DigitalCommons@University of Nebraska - Lincoln

Nebraska Tractor Tests

Tractor Test and Power Museum, The Lester F.
Larsen

January 2004

Test 1835: John Deere 7920 IVT Diesel

Nebraska Tractor Test Lab

University of Nebraska-Lincoln, tractortestlab@unl.edu

Follow this and additional works at: <https://digitalcommons.unl.edu/tractormuseumlit>



Part of the [Energy Systems Commons](#), [History of Science, Technology, and Medicine Commons](#), [Other Mechanical Engineering Commons](#), [Physical Sciences and Mathematics Commons](#), [Science and Mathematics Education Commons](#), and the [United States History Commons](#)

Nebraska Tractor Test Lab, "Test 1835: John Deere 7920 IVT Diesel" (2004). *Nebraska Tractor Tests*. 2131.

<https://digitalcommons.unl.edu/tractormuseumlit/2131>

This Article is brought to you for free and open access by the Tractor Test and Power Museum, The Lester F. Larsen at DigitalCommons@University of Nebraska - Lincoln. It has been accepted for inclusion in Nebraska Tractor Tests by an authorized administrator of DigitalCommons@University of Nebraska - Lincoln.

NEBRASKA OECD TRACTOR TEST 1835—SUMMARY 427

JOHN DEERE 7920 IVT DIESEL INFINITELY VARIABLE TRANSMISSION

POWER TAKE-OFF PERFORMANCE

Power HP (kW)	Crank shaft speed rpm	Gal/hr (l/h)	lb/hp.hr (kg/kW.h)	Hp.hr/gal (kW.h/l)	Mean Atmospheric Conditions
MAXIMUM POWER AND FUEL CONSUMPTION					
Rated Engine Speed—(PTO speed—1077 rpm)					
171.26 (127.71)	2100	10.43 (39.50)	0.428 (0.260)	16.41 (3.23)	
Standard Power Take-off Speed (1000 rpm)					
185.59 (138.39)	1951	10.58 (40.06)	0.400 (0.244)	17.54 (3.45)	
Maximum Power (2 hours)					
192.77 (143.75)	1750	10.57 (40.03)	0.385 (0.234)	18.23 (3.59)	

VARYING POWER AND FUEL CONSUMPTION

171.26 (127.71)	2100	10.43 (39.50)	0.428 (0.260)	16.41 (3.23)	Air temperature
153.30 (114.31)	2212	10.00 (37.85)	0.458 (0.279)	15.33 (3.02)	76°F (25°C)
115.33 (86.00)	2220	8.37 (31.70)	0.510 (0.310)	13.77 (2.71)	Relative humidity
77.19 (57.56)	2227	6.67 (25.23)	0.606 (0.369)	11.58 (2.28)	34%
38.76 (28.91)	2236	4.74 (17.95)	0.859 (0.523)	8.17 (1.61)	Barometer
1.09 (0.82)	2244	2.99 (11.32)	19.182 (11.668)	0.37 (0.07)	28.90" Hg (98.37 kPa)

Maximum Torque - 654 lb.-ft. (886 Nm) at 1148 rpm
 Maximum Torque Rise -52.4%
 Torque rise at 1703 engine rpm -38%

DRAWBAR PERFORMANCE UNBALLASTED - FRONT DRIVE ENGAGED FUEL CONSUMPTION CHARACTERISTICS

Power Hp (kW)	Drawbar pull lbs (kN)	Speed mph (km/h)	Crank- shaft speed rpm	Slip %	Fuel Consumption lb/hp.hr (kg/kW.h)	Hp.hr/gal (kW.h/l)	Temp. °C cool- ing med	Air dry bulb	Barom. inch Hg (kPa)
Maximum Power—5.1 mph (8.2 km/h)-Manual Mode									
146.06 (108.91)	11678 (51.94)	4.69 (7.55)	2098	3.49	0.478 (0.291)	14.68 (2.89)	190 (88)	59 (15)	28.87 (97.77)
75% of Pull at Maximum Power—5.1 mph (8.2 km/h)-Manual Mode									
117.12 (87.34)	8748 (38.91)	5.02 (8.08)	2217	2.37	0.539 (0.328)	13.02 (2.57)	184 (85)	48 (9)	29.03 (98.31)
50% of Pull at Maximum Power—5.1 mph (8.2 km/h)-Manual Mode									
79.19 (59.05)	5832 (25.94)	5.09 (8.19)	2225	1.45	0.629 (0.382)	11.17 (2.20)	176 (80)	48 (9)	29.03 (98.31)
75% of Pull at Reduced Engine Speed—5.1 mph (8.2 km/h)-Auto Mode									
116.59 (86.94)	8748 (38.91)	5.00 (8.04)	1690	2.37	0.435 (0.264)	16.15 (3.18)	184 (84)	48 (9)	29.03 (98.31)
50% of Pull at Reduced Engine Speed—5.1 mph (8.2 km/h)-Auto Mode									
79.52 (59.30)	5827 (25.92)	5.12 (8.24)	1352	1.45	0.456 (0.277)	15.40 (3.03)	179 (82)	48 (9)	29.03 (98.31)

Location of Test: Nebraska Tractor Test Laboratory, University of Nebraska, Lincoln, Nebraska 68583-0832

Dates of Test: April 1-22, 2004

Manufacturer: John Deere Tractor Works, 3500 East Donald Street, P.O. Box 270, Waterloo Ia, 50704-0270

FUEL, OIL and TIME: Fuel No. 2 Diesel Specific gravity converted to 60°/60°F (15°/15°C) 0.8432 Fuel weight 7.021 lbs/gal (0.841 kg/l) Oil SAE 15W-40 API service classification CF-4 Transmission and hydraulic lubricant John Deere Hy-Gard fluid Front axle lubricant John Deere Hy-Gard fluid Total time engine was operated: 30.0 hours

ENGINE: Make John Deere Diesel Type six cylinder vertical with turbocharger and air to air intercooler Serial No.*RG6081H233741* Crankshaft lengthwise Rated engine speed 2100 Bore and stroke 4.56 x 5.06" (115.8 mm x 128.5 mm) Compression ratio 16.5 to 1 Displacement 496 cu in (8134 ml) Starting system 12 volt Lubrication pressure Air cleaner two paper elements and aspirator Oil filter one full flow cartridge Oil cooler engine coolant heat exchanger for crankcase oil, radiator for hydraulic and transmission oil Fuel filter one paper element and prestrainer Fuel cooler radiator for pump inlet fuel Muffler vertical Cooling medium temperature control 2 thermostats and variable speed fan

ENGINE OPERATING PARAMETERS: Fuel rate: 72.3-79.8 lb/h (32.8 -36.2 kg/h) High idle: 2215 -2265 rpm Turbo boost: nominal 17.4-20.3 psi (120-140 kPa) as measured 18.8 psi (130 kPa)

CHASSIS: Type front wheel assist Serial No.*RW7920D010730* Tread width rear 60.0" (1524 mm) to 117.5" (2984 mm) front 60.0" (1524 mm) to 88.0" (2235 mm) Wheelbase 112.5" (2860 mm) Hydraulic control system direct engine drive Transmission Infinitely variable with two mechanical ranges and automatic shifting between ranges. Nominal travel speeds mph (km/h) forward - 0-25.0 mph, (0-40 km/h) reverse - 0-25.0 mph (0-40 km/h) Clutch wet multiple disc hydraulically actuated by foot pedal Brakes wet multiple disc hydraulically operated by two foot pedals that can be locked together Steering hydrostatic Power take-off 540 rpm at 1950 engine rpm or 1000 rpm at 1950 engine rpm Unladen tractor mass 17965 lb (8149 kg)

DRAWBAR PERFORMANCE
UNBALLASTED - FRONT DRIVE ENGAGED-2100 RPM
MAXIMUM POWER AT SELECTED TRAVEL SPEEDS

Power Hp (kW)	Drawbar pull lbs (kN)	Speed mph (km/h)	Crank- shaft speed rpm	Slip %	Fuel Consumption lb/hp.hr (kg/kW.h)	Temp. °F (°C) cool- ing med	Barom. inch Hg (kPa)		
2.8 mph (4.5 km/h)									
115.86 (86.40)	17373 (77.28)	2.50 (4.02)	2226	11.44	0.600 (0.365)	11.71 (2.31)	184 (85)	49 (9)	28.87 (97.77)
3.7 mph (6.0 km/h)									
140.90 (105.07)	15832 (70.42)	3.34 (5.37)	2096	6.04	0.503 (0.306)	13.96 (2.75)	185 (85)	46 (8)	29.01 (98.24)
4.3 mph (7.0 km/h)									
146.04 (108.90)	13848 (61.60)	3.95 (6.36)	2097	4.59	0.483 (0.294)	14.53 (2.86)	186 (85)	47 (8)	29.01 (98.24)
5.1 mph (8.2 km/h)									
146.06 (108.91)	11678 (51.94)	4.69 (7.55)	2098	3.49	0.478 (0.291)	14.68 (2.89)	190 (88)	59 (15)	28.87 (97.77)
5.6 mph (9.0 km/h)									
146.61 (109.32)	10623 (47.25)	5.18 (8.33)	2103	2.93	0.474 (0.288)	14.81 (2.92)	188 (87)	56 (13)	28.89 (97.83)
6.2 mph (10.0 km/h)									
146.67 (109.37)	9533 (42.40)	5.77 (9.29)	2098	2.68	0.474 (0.288)	14.82 (2.92)	188 (87)	60 (16)	28.85 (97.70)
6.8 mph (11.0 km/h)									
146.13 (108.97)	8611 (38.30)	6.36 (10.24)	2100	2.28	0.483 (0.294)	14.52 (2.86)	193 (90)	62 (17)	28.84 (97.66)
7.5 mph (12.0 km/h)									
144.25 (107.57)	7784 (34.63)	6.95 (11.18)	2096	1.96	0.486 (0.296)	14.44 (2.84)	193 (90)	63 (17)	28.82 (97.60)
8.1 mph (13.0 km/h)									
143.14 (106.74)	7088 (31.53)	7.57 (12.19)	2098	1.67	0.489 (0.297)	14.36 (2.83)	194 (90)	65 (18)	28.81 (97.56)
8.7 mph (14.0 km/h)									
140.27 (104.60)	6457 (28.72)	8.15 (13.11)	2095	1.63	0.503 (0.306)	13.94 (2.75)	186 (86)	48 (9)	28.87 (97.77)

REPAIRS AND ADJUSTMENTS: No repairs or adjustments.

NOTE: Manual mode was selected by placing the AutoPowr(IVT) selector in the OFF position. Auto mode was selected by placing the Autopowr (IVT) selector in position 3.

REMARKS: All test results were determined from observed data obtained in accordance with official OECD, SAE and Nebraska test procedures. For the maximum power tests the fuel temperature at the injection pump inlet was maintained at 96°F (36°C). The maximum drawbar pull was limited to avoid excessive tractor bouncing. The performance figures on this summary were taken from a test conducted under the OECD Code II test code procedure.

We, the undersigned, certify that this is a true and correct report of official Tractor Test No. **1835**, Nebraska Summary 427, July 19, 2004.

Leonard L. Bashford
 Director

M.F. Kocher
 V.I. Adamchuk
 W.P. Campbell
 Board of Tractor Test Engineers

TRACTOR SOUND LEVEL WITH CAB	Auto Mode dB(A)
At no load at 4.6 mph (7.5 km/h) (engine-1200 RPM)	66.7
Transport speed - no load	74.1
Bystander	85.6

TIRES, BALLAST AND WEIGHT	With Ballast	Without Ballast
Rear Tires - No., size, ply & psi (kPa)	Four 480/80R46;***;11(75)	Two 480/80R46;***;17(115)
Ballast - Duals (total)	1830 lb (830 kg)	None
- Cast Iron (total)	2295 lb (1041 kg)	None
Front Tires - No., size, ply & psi (kPa)	Two 420/90R30;***;17(115)	Two 420/90R30;***;12(85)
Ballast - Liquid (total)	None	None
- Cast Iron (total)	1120 lb (508 kg)	None
Height of Drawbar	21.5 in (545 mm)	21.5 in (545 mm)
Static Weight with operator - Rear	15145 lb (6870 kg)	11500 lb (5216 kg)
- Front	8240 lb (3737 kg)	6640 lb (3012 kg)
- Total	23385 lb (10607 kg)	18140 lb (8228 kg)

DRAWBAR PERFORMANCE
UNBALLASTED - FRONT DRIVE ENGAGED - 1750 RPM
MAXIMUM POWER AT SELECTED TRAVEL SPEEDS

Power Hp (kW)	Drawbar pull lbs (kN)	Speed mph (km/h)	Crank- shaft speed rpm	Slip %	Fuel Consumption		Temp. °F(°C)		Barom. inch Hg (kPa)
					lb/hp.hr (kg/kW.h)	Hp.hr/gal (kW.h/l)	cool- ing med	Air dry bulb	
					2.8 mph (4.5 km/h)				
116.09 (86.57)	17423 (77.50)	2.50 (4.02)	2229	10.81	0.599 (0.364)	11.72 (2.31)	185 (85)	49 (9)	28.87 (97.77)
					3.7 mph (6.0 km/h)				
141.62 (105.61)	16090 (71.57)	3.30 (5.31)	2083	6.49	0.501 (0.305)	14.01 (2.76)	185 (85)	46 (8)	29.01 (98.24)
					4.3 mph (7.0 km/h)				
154.05 (114.88)	15588 (69.34)	3.71 (5.96)	1987	5.88	0.470 (0.286)	14.93 (2.94)	190 (88)	54 (12)	28.58 (96.78)
					5.1 mph (8.2 km/h)				
163.37 (121.82)	15081 (67.08)	4.06 (6.54)	1848	5.49	0.451 (0.274)	15.58 (3.07)	195 (90)	57 (14)	28.60 (96.85)
					5.6 mph (9.0 km/h)				
164.80 (122.89)	14630 (65.08)	4.22 (6.80)	1749	5.18	0.437 (0.266)	16.05 (3.16)	194 (90)	58 (14)	28.87 (97.77)
					6.2 mph (10.0 km/h)				
164.95 (123.00)	13074 (58.16)	4.73 (7.61)	1746	4.47	0.440 (0.267)	15.97 (3.15)	194 (90)	61 (16)	28.84 (97.66)
					6.8 mph (11.0 km/h)				
165.44 (123.37)	11841 (52.67)	5.24 (8.43)	1748	3.75	0.440 (0.268)	15.95 (3.14)	194 (90)	63 (17)	28.83 (97.63)
					7.5 mph (12.0 km/h)				
165.58 (123.47)	10767 (47.89)	5.77 (9.28)	1749	3.18	0.436 (0.265)	16.11 (3.17)	194 (90)	64 (18)	28.81 (97.56)
					8.1 mph (13.0 km/h)				
165.07 (123.09)	9900 (44.04)	6.25 (10.06)	1746	2.77	0.442 (0.269)	15.88 (3.13)	194 (90)	66 (19)	28.80 (97.53)
					8.7 mph (14.0 km/h)				
165.89 (123.70)	9222 (41.02)	6.75 (10.86)	1750	2.61	0.434 (0.264)	16.16 (3.18)	194 (90)	47 (8)	28.87 (97.77)
					9.3 mph (15.0 km/h)				
164.04 (122.33)	8532 (37.95)	7.21 (11.60)	1754	2.59	0.437 (0.266)	16.06 (3.16)	193 (90)	47 (8)	28.87 (97.77)
					10.3 mph (16.6 km/h)				
144.16 (107.50)	6704 (29.82)	8.06 (12.98)	1746	1.77	0.497 (0.302)	14.12 (2.78)	196 (91)	46 (8)	28.87 (97.77)

DRAWBAR PERFORMANCE
UNBALLASTED - FRONT DRIVE ENGAGED (Auto mode)
MAXIMUM POWER AT SELECTED TRAVEL SPEEDS

Power Hp (kW)	Drawbar pull lbs (kN)	Speed mph (km/h)	Crank- shaft speed rpm	Slip %	Fuel Consumption lb/hp.hr (kg/kW.h)	Hp.hr/gal (kW.h/l)	Temp. °F(°C) cool- ing med	Air dry bulb	Barom. inch Hg (kPa)
2.8 mph (4.5 km/h)									
119.67 (89.24)	17266 (76.80)	2.60 (4.18)	1989	10.58	0.512 (0.311)	13.73 (2.70)	185 (85)	48 (9)	28.87 (97.77)
3.7 mph (6.0 km/h)									
147.96 (110.33)	15823 (70.38)	3.51 (5.64)	1999	5.87	0.476 (0.289)	14.76 (2.91)	191 (88)	52 (11)	28.58 (96.78)
4.3 mph (7.0 km/h)									
153.72 (114.63)	13841 (61.57)	4.16 (6.70)	2000	4.58	0.457 (0.278)	15.37 (3.03)	191 (88)	55 (13)	28.59 (96.82)
5.1 mph (8.2 km/h)									
153.25 (114.28)	11662 (51.87)	4.93 (7.93)	1997	3.49	0.457 (0.278)	15.36 (3.03)	190 (88)	57 (14)	28.60 (96.85)
5.6 mph (9.0 km/h)									
153.78 (114.68)	10634 (47.30)	5.42 (8.73)	2001	2.95	0.457 (0.278)	15.38 (3.03)	192 (89)	57 (14)	28.89 (97.83)
6.2 mph (10.0 km/h)									
154.05 (114.88)	9538 (42.43)	6.06 (9.75)	1998	2.64	0.459 (0.279)	15.28 (3.01)	195 (90)	61 (16)	28.85 (97.70)
6.8 mph (11.0 km/h)									
152.45 (113.68)	8579 (38.16)	6.66 (10.72)	1998	2.27	0.464 (0.283)	15.12 (2.98)	194 (90)	62 (17)	28.83 (97.63)
7.5 mph (12.0 km/h)									
151.03 (112.62)	7770 (34.56)	7.29 (11.73)	1997	1.91	0.467 (0.284)	15.05 (2.96)	192 (89)	64 (18)	28.82 (97.60)
8.1 mph (13.0 km/h)									
149.99 (111.85)	7077 (31.48)	7.95 (12.79)	1993	1.66	0.471 (0.287)	14.91 (2.94)	194 (90)	66 (19)	28.81 (97.56)
8.7 mph (14.0 km/h)									
145.19 (108.27)	6460 (28.74)	8.43 (13.56)	2002	1.61	0.485 (0.295)	14.48 (2.85)	189 (87)	48 (9)	28.87 (97.77)

DRAWBAR PERFORMANCE
BALLASTED - FRONT DRIVE ENGAGED - 1750 RPM
MAXIMUM POWER AT SELECTED TRAVEL SPEEDS

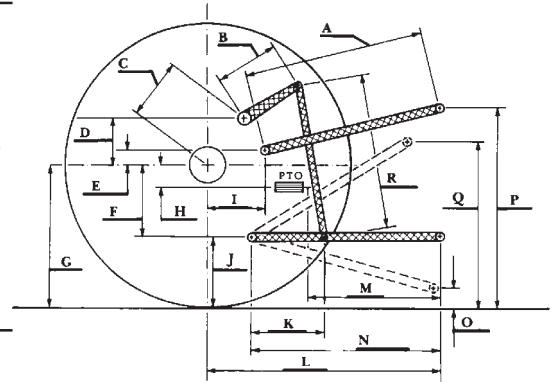
Power Hp (kW)	Drawbar pull lbs (kN)	Speed mph (km/h)	Crank- shaft speed	Slip %	Fuel Consumption lb/hp.hr (kg/kW.h)	Temp. °F (°C) cool- ing med	Barom. inch Hg (kPa)		
120.25 (89.67)	23206 (103.23)	1.94 (3.13)	2087	2.2 mph (3.6 km/h) 9.08	0.594 (0.361)	11.82 (2.33)	190 (88)	57 (14)	28.58 (96.78)
148.57 (110.79)	21778 (96.87)	2.56 (4.12)	1951	3.1 mph (5.0 km/h) 5.99	0.496 (0.301)	14.17 (2.79)	187 (86)	46 (8)	29.04 (98.34)
159.83 (119.19)	20118 (89.49)	2.98 (4.79)	1855	3.7 mph (6.0 km/h) 4.64	0.461 (0.280)	15.24 (3.00)	190 (88)	50 (10)	29.04 (98.34)
166.17 (123.91)	18794 (83.60)	3.32 (5.34)	1748	4.3 mph (7.0 km/h) 3.98	0.437 (0.266)	16.06 (3.16)	191 (88)	51 (11)	29.03 (98.31)
168.73 (125.82)	16129 (71.75)	3.92 (6.31)	1748	5.1 mph (8.2 km/h) 3.18	0.431 (0.262)	16.29 (3.21)	191 (89)	51 (11)	29.02 (98.27)
168.88 (125.94)	14637 (65.11)	4.33 (6.96)	1747	5.6 mph (9.0 km/h) 2.81	0.428 (0.261)	16.36 (3.22)	194 (90)	52 (11)	29.02 (98.27)
169.05 (126.06)	13120 (58.36)	4.83 (7.78)	1747	6.2 mph (10.0 km/h) 2.46	0.424 (0.258)	16.54 (3.26)	194 (90)	53 (12)	29.01 (98.24)
167.87 (125.18)	11830 (52.62)	5.32 (8.56)	1745	6.8 mph (11.0 km/h) 2.15	0.427 (0.260)	16.43 (3.24)	195 (91)	54 (12)	29.00 (98.21)
167.41 (124.84)	10792 (48.00)	5.82 (9.36)	1746	7.5 mph (12.0 km/h) 1.93	0.432 (0.262)	16.27 (3.21)	197 (92)	54 (12)	29.00 (98.21)
165.47 (123.39)	9671 (43.02)	6.42 (10.33)	1745	8.1 mph (13.0 km/h) 1.69	0.437 (0.266)	16.08 (3.17)	199 (93)	54 (12)	29.00 (98.21)
164.34 (122.55)	9051 (40.26)	6.81 (10.96)	1744	8.7 mph (14.0 km/h) 1.55	0.438 (0.266)	16.03 (3.16)	199 (93)	54 (12)	29.00 (98.21)
162.29 (121.02)	8347 (37.13)	7.29 (11.73)	1747	9.3 mph (15.0 km/h) 1.39	0.446 (0.271)	15.74 (3.10)	199 (93)	54 (12)	29.00 (98.21)
142.56 (106.31)	6646 (29.56)	8.04 (12.95)	1748	10.1 mph (16.3 km/h) 1.03	0.513 (0.312)	13.69 (2.70)	201 (94)	54 (12)	29.00 (98.21)

THREE POINT HITCH PERFORMANCE (OECD Static Test)

CATEGORY: III

Quick Attach: Yes

	<u>lift cylinders</u> 2 x 90 mm	<u>lift cylinders</u> 2 x 100 mm
Maximum Force Exerted Through Whole Range:	10987 lbs (48.9 kN)	15574 lbs (69.3 kN)
i) Opening pressure of relief valve:	NA	NA
	<u>one outlet set</u>	<u>two outlet sets combined</u>
Sustained pressure at compensator cutoff:	2905 psi (200 bar)	2910 psi (201 bar)
ii) Pump delivery rate at minimum pressure and rated engine speed:	31.9 GPM (120.7 l/min)	32.0 GPM (121.1 l/min)
iii) Pump delivery rate at maximum hydraulic power:	32.2 GPM (121.9 l/min)	32.2 GPM (122.0 l/min)
Delivery pressure:	2200 psi (152 bar)	2610 psi (180 bar)
Power:	41.3 HP (30.8 kW)	49.0 HP (36.6 kW)



HITCH DIMENSIONS AS TESTED—NO LOAD

THREE POINT HITCH PERFORMANCE

Observed Maximum Pressure psi. (bar)	2910 (201)				
Location:	lift cylinders				
Hydraulic oil temperature: °F (°C)	144 (62)				
Location:	hydraulic sump				
Category:	III				
Quick attach:	Yes				

SAE Static Test—System pressure 2610 psi (180 Bar)
with lift cylinders 2 x 90 mm

Hitch point distance to ground level in. (mm)	7.9 (201)	16.0 (406)	23.9 (607)	31.8 (807)	40.0 (1015)
Lift force on frame lb	13290	13349	13110	12120	10573
" " " " " " (kN)	(59.1)	(59.4)	(58.3)	(53.9)	(47.0)

with lift cylinders 2 x 100 mm

Hitch point distance to ground level in. (mm)	7.9 (201)	16.1 (409)	24.0 (609)	31.9 (810)	40.0 (1017)
Lift force on frame lb	18660	18544	17958	16558	14432
" " " " " " (kN)	(83.0)	(82.5)	(79.9)	(73.7)	(64.2)

	OECD test		SAE test	
	inch	mm	inch	mm
A	29.6	752	26.4	670
B	16.7	425	16.7	425
C	25.6	650	25.6	650
D	23.9	608	23.9	608
E	11.1	283	7.5	190
F	12.7	323	12.7	323
G	35.6	905	35.6	905
H	4.7	120	4.7	120
I	20.9	530	20.6	523
J	22.9	582	22.9	582
K	28.1	713	27.8	706
L	51.2	1300	47.4	1204
*L'	--	--	50.9	1293
M	24.7	628	20.9	532
N	44.1	1120	40.3	1024
O	9.0	230	8.0	203
P	50.2	1275	45.2	1149
Q	40.4	1025	37.6	954
R	38.4	975	39.8	1010

*L' to Quick Attach ends



JOHN DEERE 7920 DIESEL

Agricultural Research Division
Institute of Agriculture and Natural Resources
University of Nebraska—Lincoln
Darrell Nelson, Dean and Director