

University of Nebraska - Lincoln

DigitalCommons@University of Nebraska - Lincoln

Historical Materials from University of
Nebraska-Lincoln Extension

Extension

9-1951

EC701 Farm Water System : Insulated Pump House

Follow this and additional works at: <https://digitalcommons.unl.edu/extensionhist>

"EC701 Farm Water System : Insulated Pump House" (1951). *Historical Materials from University of Nebraska-Lincoln Extension*. 2188.

<https://digitalcommons.unl.edu/extensionhist/2188>

This Article is brought to you for free and open access by the Extension at DigitalCommons@University of Nebraska - Lincoln. It has been accepted for inclusion in Historical Materials from University of Nebraska-Lincoln Extension by an authorized administrator of DigitalCommons@University of Nebraska - Lincoln.

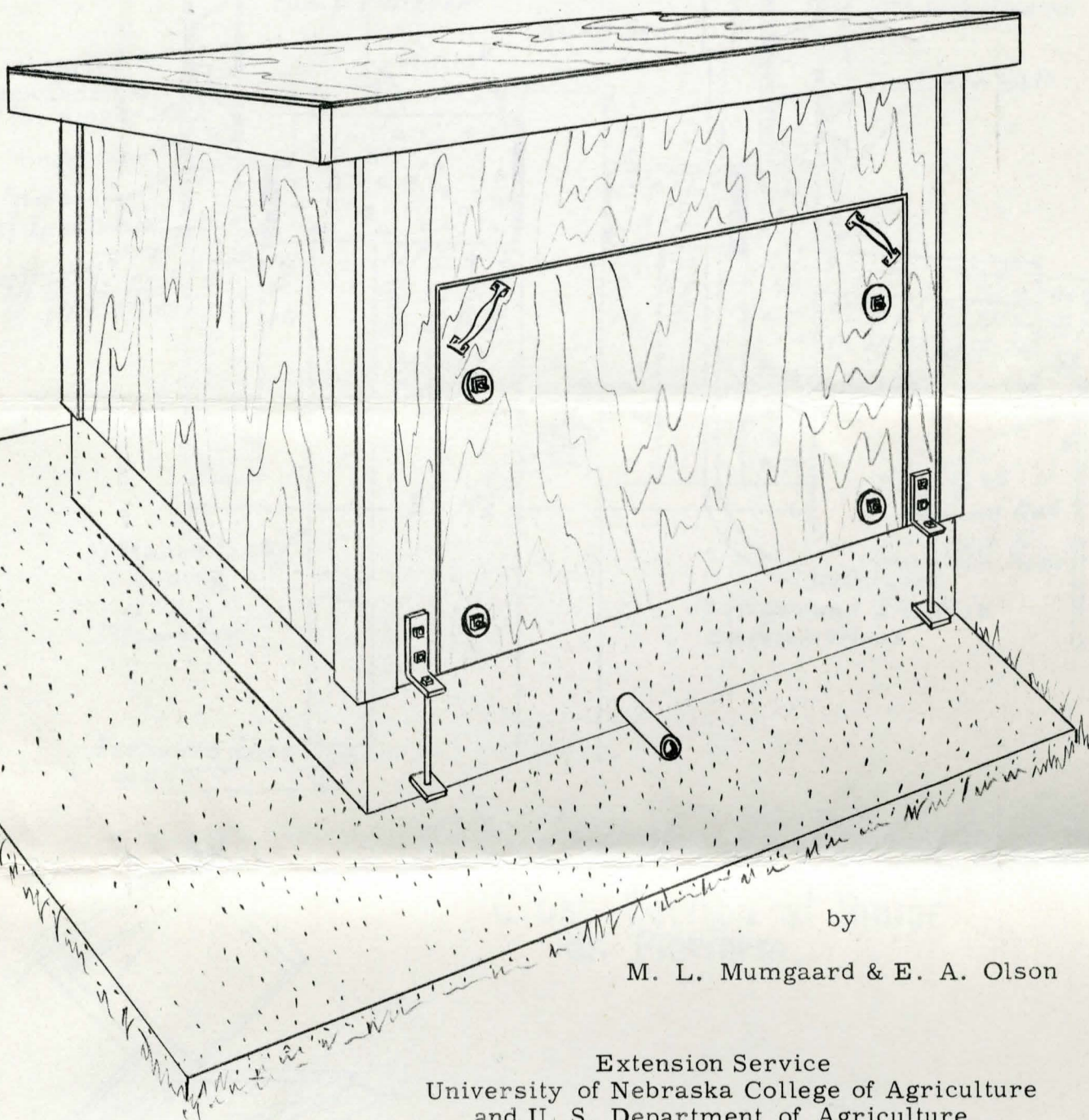
106.213
E.C. 701

— FARM WATER SYSTEM —

E.C. 701
Sept. 1952

INSULATED PUMP HOUSE

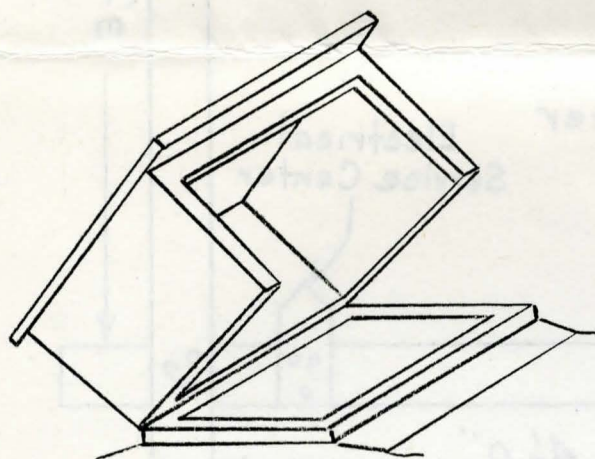
RECEIVED
MAR 17 1970
COLLEGE OF AGRICULTURE
LIBRARY



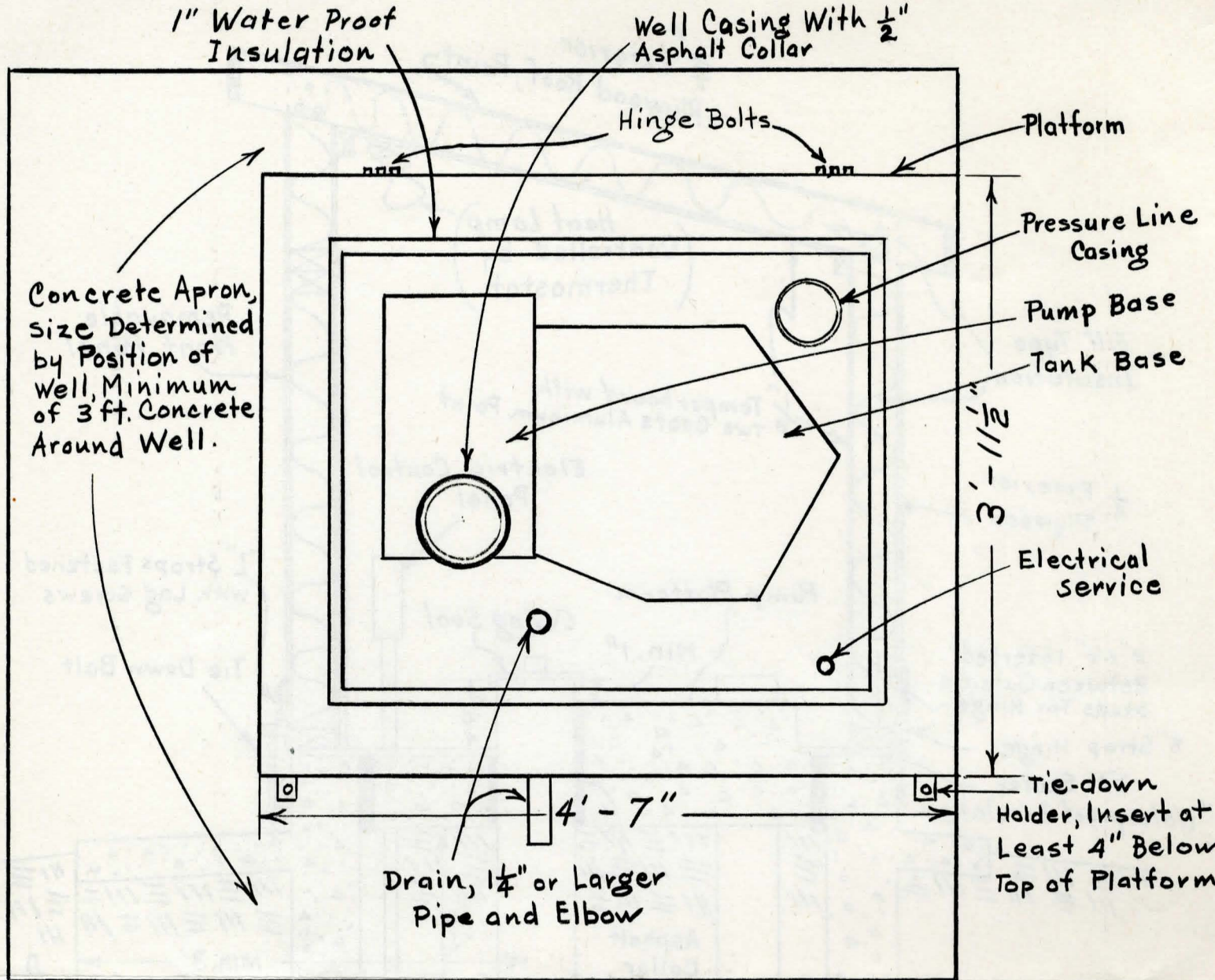
by

M. L. Mumgaard & E. A. Olson

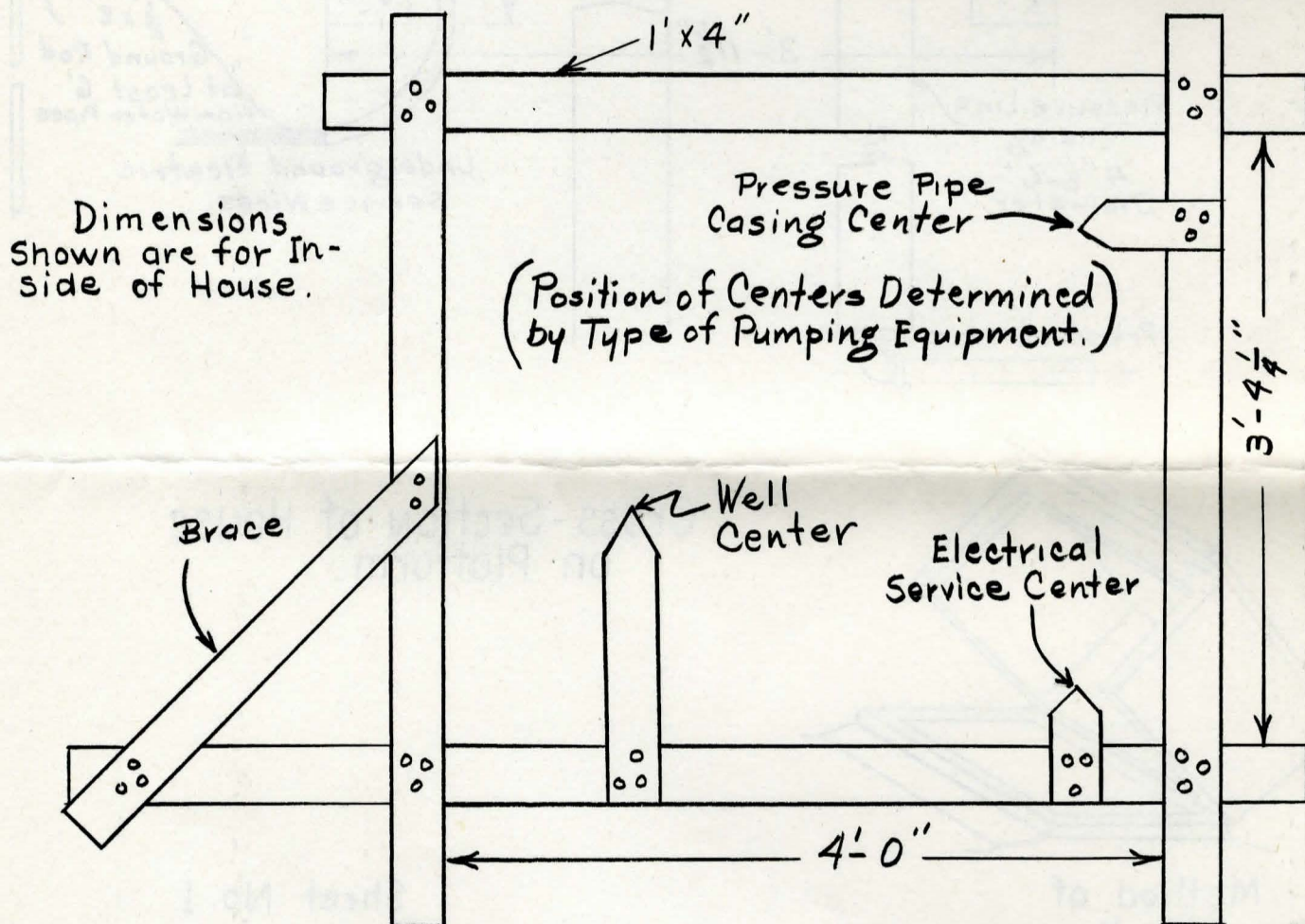
Extension Service
University of Nebraska College of Agriculture
and U. S. Department of Agriculture
Cooperating
W. V. Lambert, Director



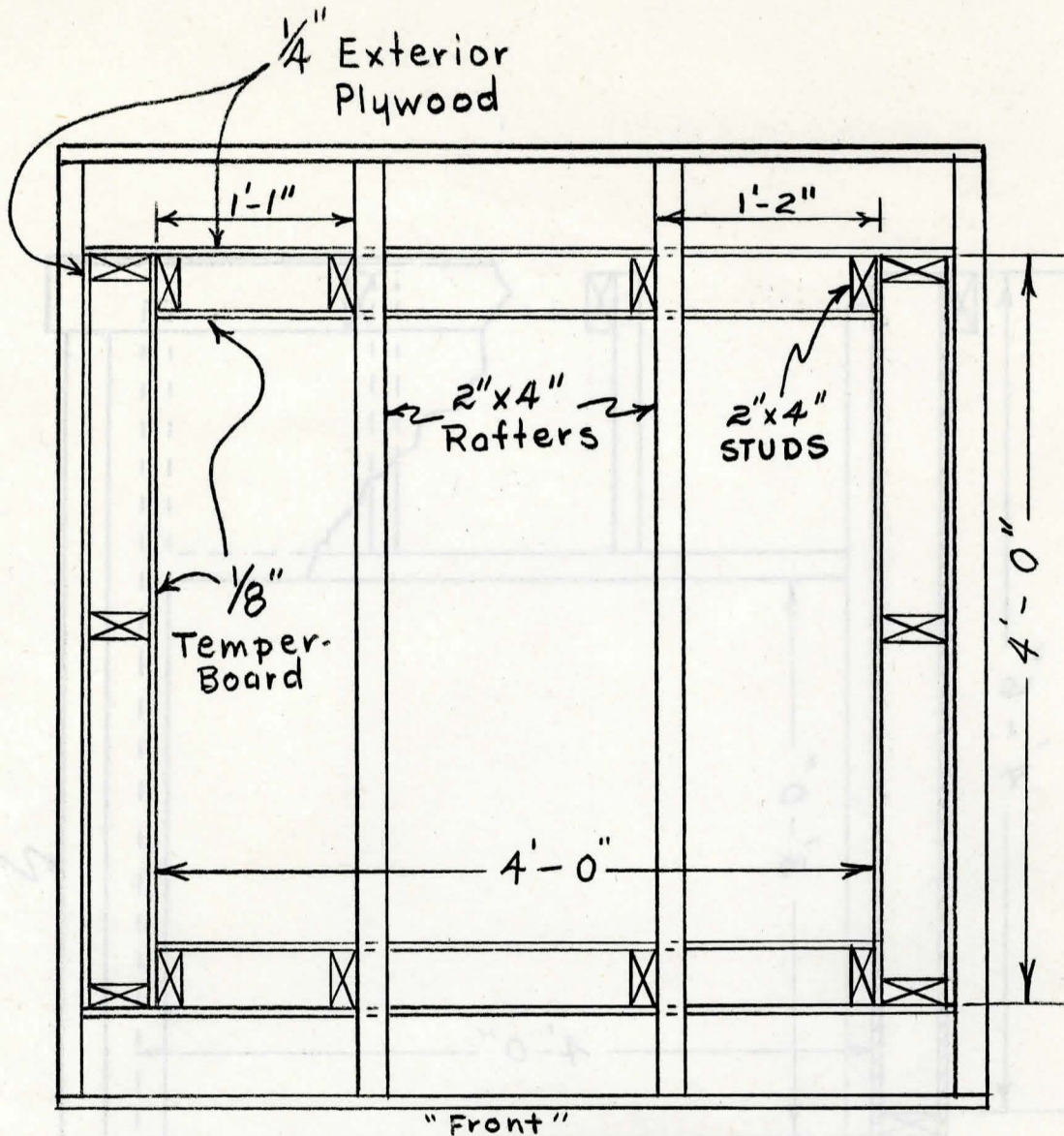
Sheet No. 1



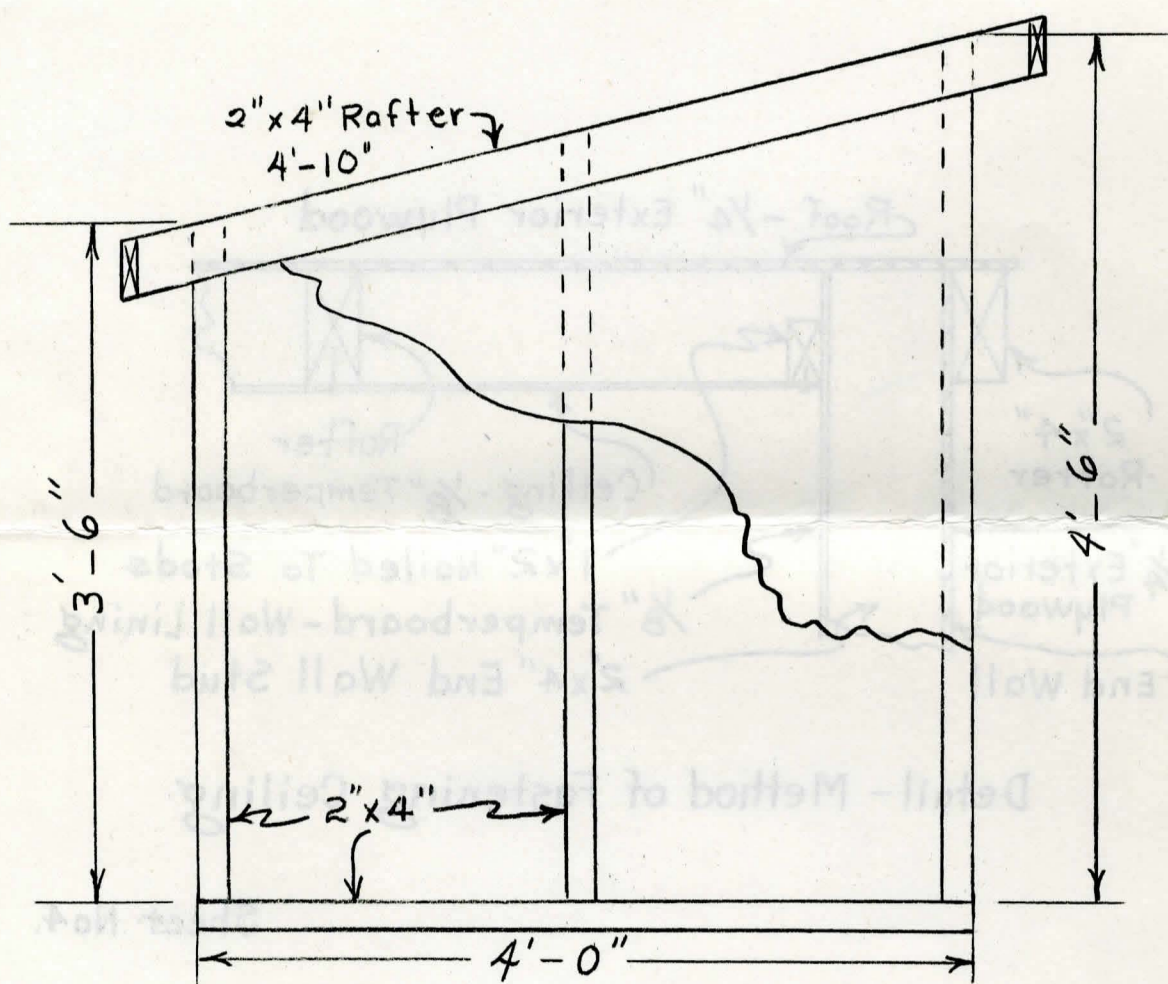
- Concrete Platform Plan -



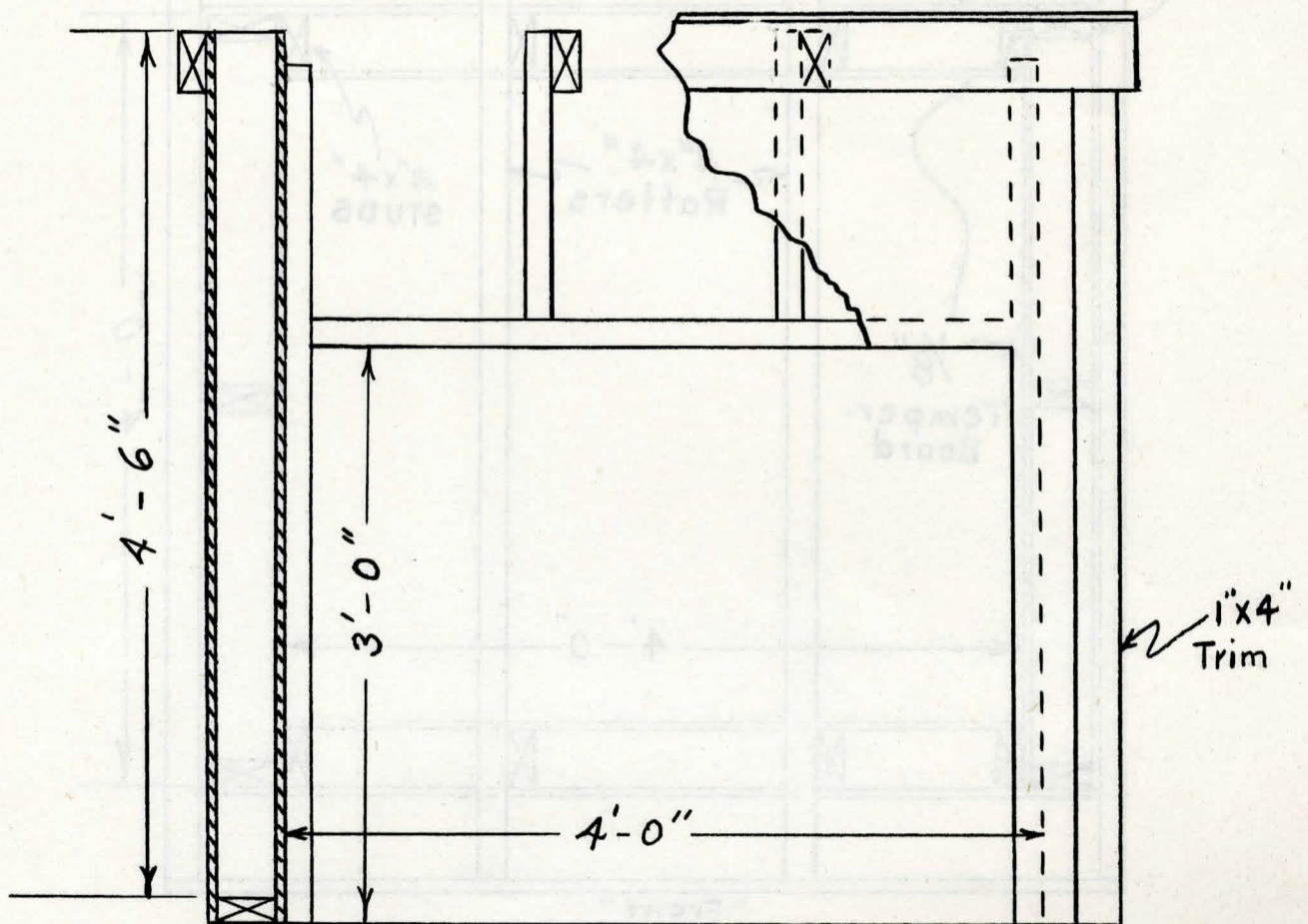
- Template For Platform Construction -



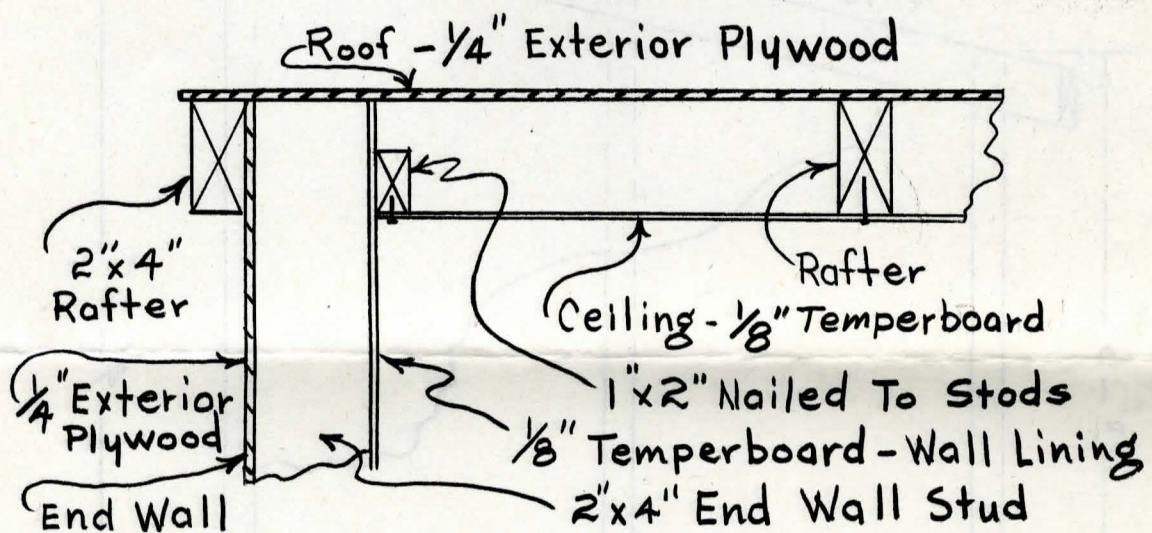
- Framing Plan -



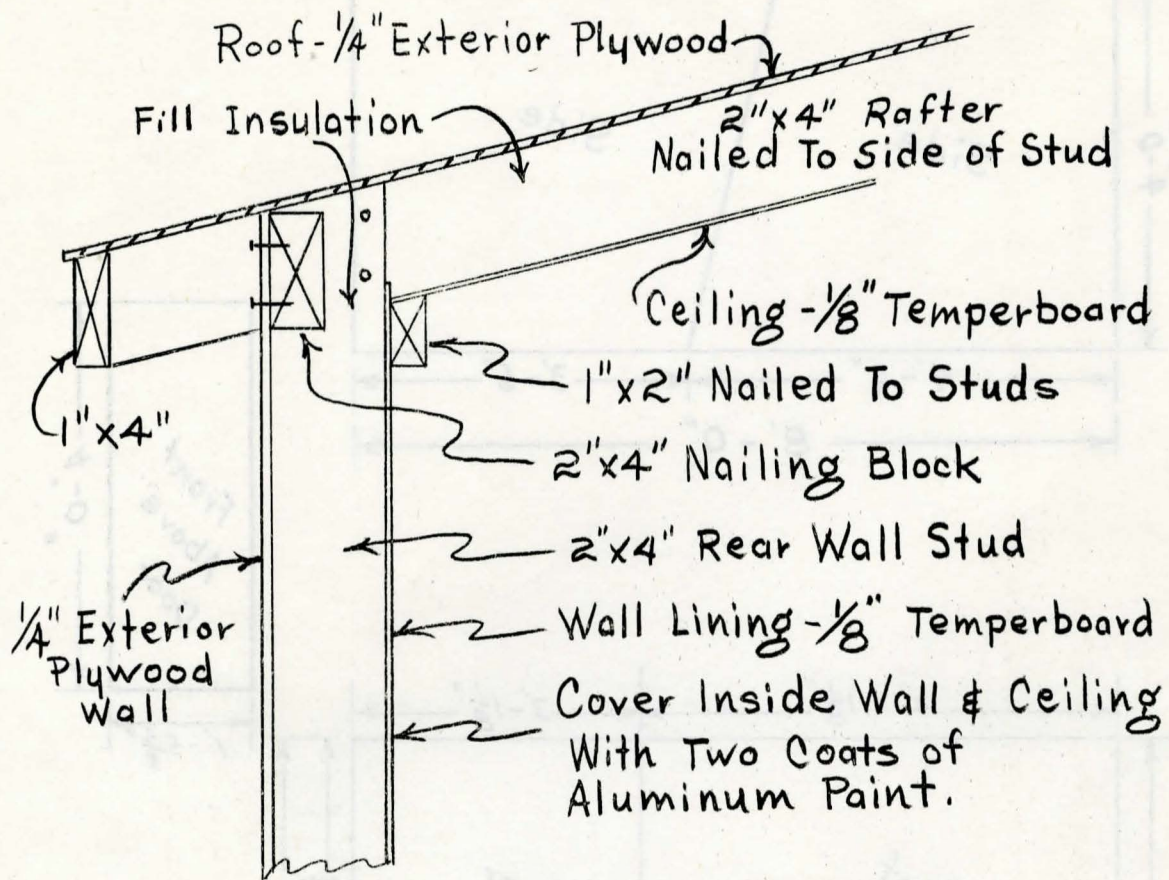
- Side Framing



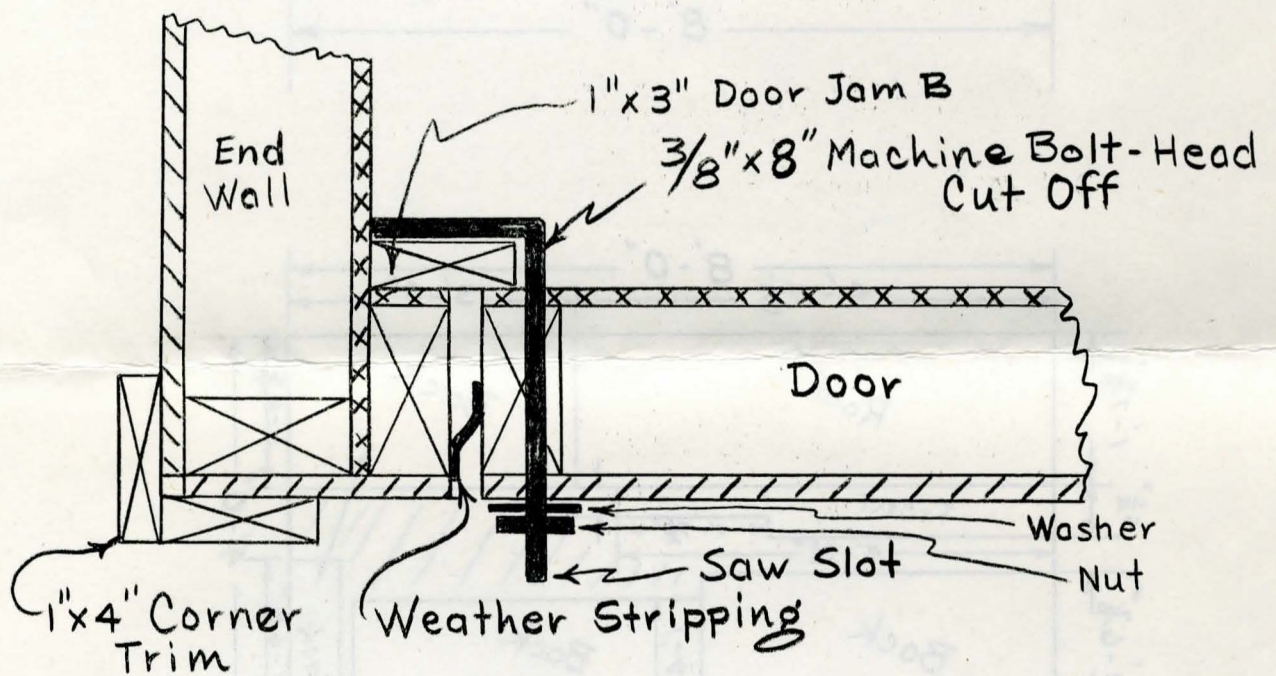
Front Framing



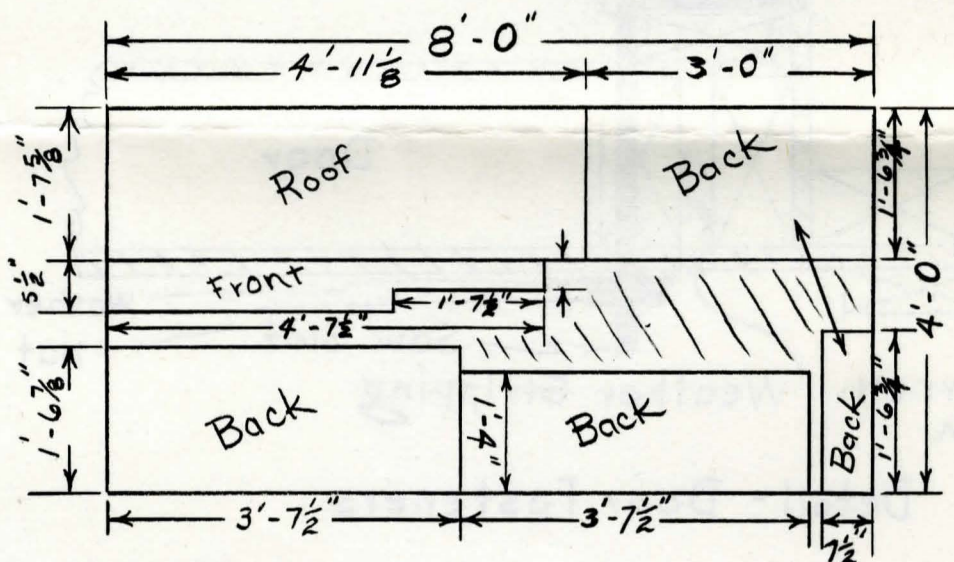
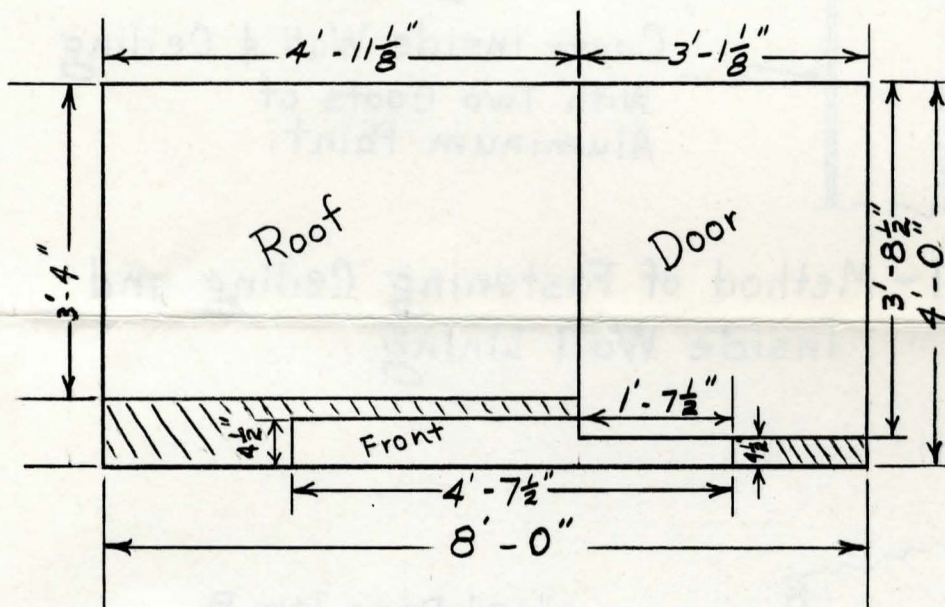
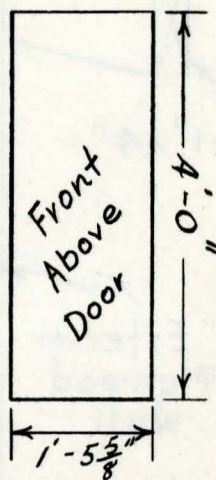
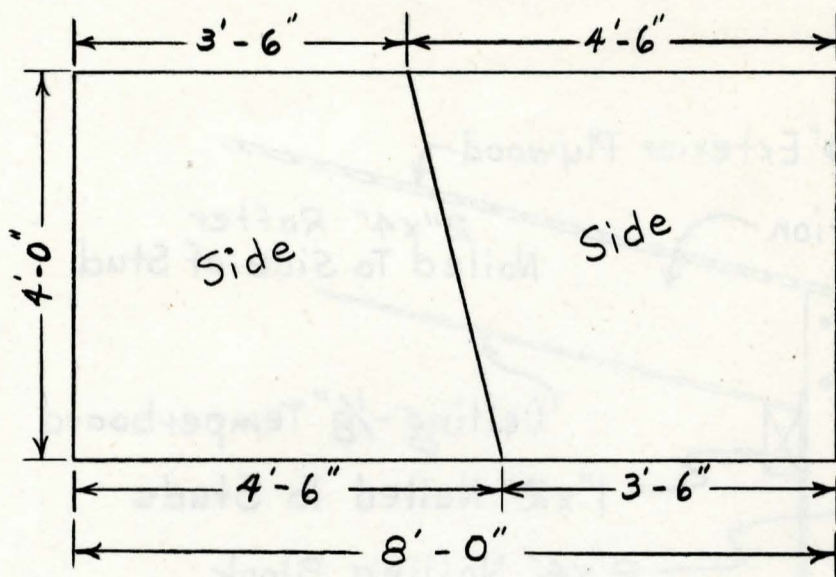
Detail - Method of Fastening Ceiling



Detail - Method of Fastening Ceiling and Inside Wall Lining.

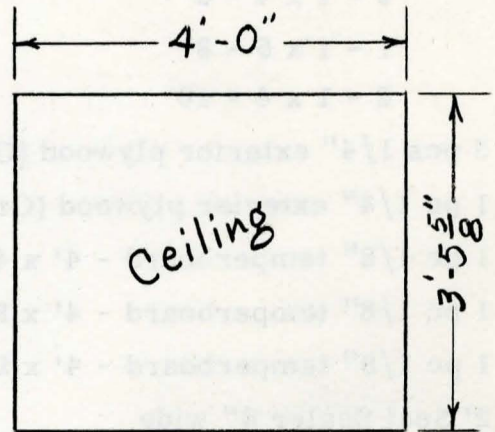
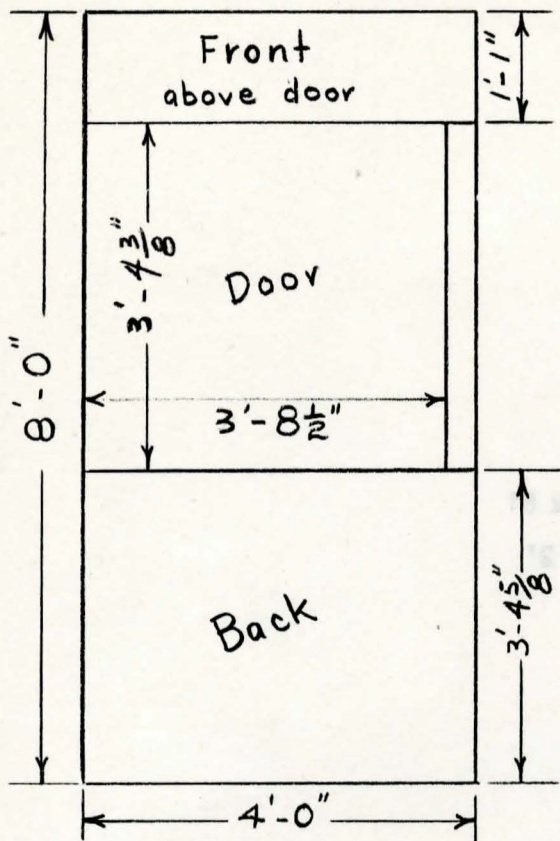


Detail - Door Fasteners

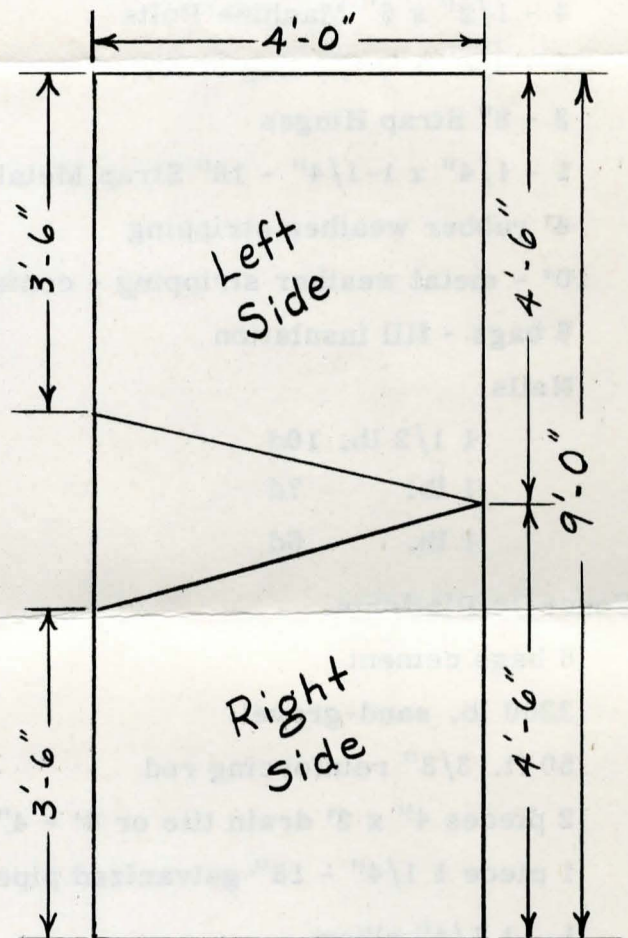


Plywood Cutting Plans

Sheet No. 6



Presdwood
Cutting Plan



Pump-house and concrete platform

Lumber

Fir - #2 or better

1 - 2 x 4 - 6'

11 - 2 x 4 - 8'

2 - 2 x 4 - 10'

1 - 2 x 6 - 2'

Pine - No. 1

5 - 1 x 4 - 8'

1 - 1 x 6 - 8'

2 - 1 x 4 - 10'

3 pcs 1/4" exterior plywood (Grade A-B) - 4' x 8'

1 pc 1/4" exterior plywood (Grade A-B) - 4' x 2'

1 pc 1/8" temperboard - 4' x 4'

1 pc 1/8" temperboard - 4' x 8'

1 pc 1/8" temperboard - 4' x 9'

12' Seal Sealer 6" wide

4 pcs Waterproof Insulation - 1" x 6" - 4'

2 - door handles

2 - 5/16" x 8" Machine Bolts

4 - 3/8" x 8" Machine Bolts

4 - 1/2" x 6" Machine Bolts

10 - 3/8" x 2 1/2" Lag Screws

2 - 8" Strap Hinges

1 - 1/4" x 1-1/4" - 16" Strap Metal

4' rubber weather stripping

10' - metal weather stripping - contact type

6 bags - fill insulation

Nails

1 1/2 lb. 10d

1 lb. 7d

1 lb. 5d

Concrete Platform.

6 bags cement

3200 lb. sand-gravel

50 ft. 3/8" reinforcing rod

2 pieces 4" x 2' drain tile or 4' - 4" fibre drain pipe

1 piece 1 1/4" - 18" galvanized pipe

1 - 1 1/4" elbow

1 - 3/4" x 4' conduit or galvanized pipe

Pump-house and concrete platform

Lumber

Fir - #2 or better

1 - 2 x 4 - 6'

11 - 2 x 4 - 8'

2 - 2 x 4 - 10'

1 - 2 x 6 - 2'

Pine - No. 1

5 - 1 x 4 - 8'

1 - 1 x 6 - 8'

2 - 1 x 4 - 10'

3 pcs 1/4" exterior plywood (Grade A-B) - 4' x 8'

1 pc 1/4" exterior plywood (Grade A-B) - 4' x 2'

1 pc 1/8" temperboard - 4' x 4'

1 pc 1/8" temperboard - 4' x 8'

1 pc 1/8" temperboard - 4' x 9'

12' Seal Sealer 6" wide

4 pcs Waterproof Insulation - 1" x 6" - 4'

2 - door handles

2 - 5/16" x 8" Machine Bolts

4 - 3/8" x 8" Machine Bolts

4 - 1/2" x 6" Machine Bolts

10 - 3/8" x 2 1/2" Lag Screws

2 - 8" Strap Hinges

1 - 1/4" x 1-1/4" - 16" Strap Metal

4' rubber weather stripping

10' - metal weather stripping - contact type

6 bags - fill insulation

Nails

1 1/2 lb. 10d

1 lb. 7d

1 lb. 5d

Concrete Platform.

6 bags cement

3200 lb. sand-gravel

50 ft. 3/8" reinforcing rod

2 pieces 4" x 2' drain tile or 4' - 4" fibre drain pipe

1 piece 1 1/4" - 18" galvanized pipe

1 - 1 1/4" elbow

1 - 3/4" x 4' conduit or galvanized pipe