

University of Nebraska - Lincoln

DigitalCommons@University of Nebraska - Lincoln

Nebraska Tractor Tests

Tractor Test and Power Museum, The Lester F.
Larsen

January 2000

Test 1771: John Deere 5205 Diesel 8-Speed

Tractor Museum

University of Nebraska-Lincoln, TractorMuseumArchives@unl.edu

Follow this and additional works at: <https://digitalcommons.unl.edu/tractormuseumlit>



Part of the [Applied Mechanics Commons](#)

Museum, Tractor, "Test 1771: John Deere 5205 Diesel 8-Speed" (2000). *Nebraska Tractor Tests*. 2198.
<https://digitalcommons.unl.edu/tractormuseumlit/2198>

This Article is brought to you for free and open access by the Tractor Test and Power Museum, The Lester F. Larsen at DigitalCommons@University of Nebraska - Lincoln. It has been accepted for inclusion in Nebraska Tractor Tests by an authorized administrator of DigitalCommons@University of Nebraska - Lincoln.

NEBRASKA TRACTOR TEST 1771

JOHN DEERE 5205 DIESEL

8 SPEED

POWER TAKE-OFF PERFORMANCE

Power HP (kW)	Crank shaft speed rpm	Gal/hr (l/h)	lb/hp.hr (kg/kW.h)	Hp.hr/gal (kW.h/l)	Mean Atmospheric Conditions
MAXIMUM POWER AND FUEL CONSUMPTION					
Rated Engine Speed (PTO speed 564 rpm)					
48.75 (36.35)	2300	2.91 (11.01)	0.422 (0.257)	16.76 (3.30)	
Standard Power Take-off Speed - (540 rpm)					
48.49 (36.16)	2201	2.85 (10.77)	0.415 (0.252)	17.04 (3.36)	
VARYING POWER AND FUEL CONSUMPTION					
48.75 (36.35)	2300	2.91 (11.01)	0.422 (0.257)	16.76 (3.30)	Air temperature
42.74 (31.87)	2374	2.59 (9.80)	0.428 (0.260)	16.50 (3.25)	74°F (23°C)
32.58 (24.29)	2404	2.08 (7.87)	0.451 (0.274)	15.66 (3.09)	Relative humidity
21.92 (16.34)	2435	1.70 (6.43)	0.547 (0.333)	12.91 (2.54)	61%
11.25 (8.39)	2468	1.27 (4.82)	0.800 (0.487)	8.83 (1.74)	Barometer
0.58 (0.43)	2493	0.93 (3.54)	11.328 (6.891)	0.62 (0.12)	28.91"Hg (97.91 kPa)
Maximum Torque 133 lb.-ft. (180 Nm) at 1400 rpm					
Maximum Torque Rise - 19.8%					
Torque rise at 1800 rpm - 14%					

TRACTOR SOUND LEVEL WITHOUT CAB	Front Wheel Drive	
	Engaged dB(A)	Disengaged dB(A)
At no load in 3rd(A3) gear	87.8	87.5
Transport speed - no load - 8th(B4) gear		92.7
Bystander in 8th(B4) gear	--	82.8

TIRES AND WEIGHT

Rear Tires No., size, ply & psi (kPa)
Front Tires No., size, ply & psi (kPa)
Height of Drawbar
Static Weight with operator Rear
Front
Total

Tested Without Ballast

Two 16.9-28; 6; 12 (85)
Two 9.5-24; 6; 12 (85)
17.5 in (445 mm)
2775 lb (1259 kg)
1920 lb (871 kg)
4695 lb (2130 kg)

Location of Test: Nebraska Tractor Test Laboratory, University of Nebraska, Lincoln Nebraska 68583-0832

Dates of Test: April 27-May 17, 2000

Manufacturer: John Deere Commercial Products Inc., 700 Horizon South Parkway, Grovetown Ga. USA, 30813

FUEL, OIL and TIME: Fuel No. 2 Diesel Specific gravity converted to 60°/60° F (15°/15°C) 0.8487 Fuel weight 7.067 lbs/gal (0.847 kg/l) Oil SAE 15W40 API service classification CG-4 Transmission and hydraulic lubricant John Deere Hy-Gard Fluid Front axle lubricant SAE 80W90 API GL-5 Total time engine was operated 10.0 hours

ENGINE: Make John Deere Diesel **Type** three cylinder vertical **Serial No.** *PE3029D071454* **Crankshaft** lengthwise **Rated engine speed** 2300 **Bore and stroke** 4.19" x 4.33" (106.4 mm x 110.0 mm) **Compression ratio** 17.4 to 1 **Displacement** 179 cu in (2934 ml) **Starting system** 12 volt **Lubrication** pressure **Air cleaner** one paper element and one polyester felt element **Oil filter** one full flow cartridge **Oil cooler** engine coolant heat exchanger for crankcase oil **Fuel filter** one paper element **Muffler** underhood **Exhaust** vertical **Cooling medium temperature control** one thermostat

ENGINE OPERATING PARAMETERS: Fuel rate: 18.8 - 20.8 lb/h (8.5 - 9.4 kg/h) **High idle:** 2475 - 2525 rpm

CHASSIS: Type front wheel assist **Serial No.** *LV5205B120101* **Tread width** rear 55.8" (1417 mm) to 71.7" (1820 mm) front 52.8" (1340 mm) to 75.0" (1904 mm) **Wheelbase** 76.8" (1950 mm) **Hydraulic control system** direct engine drive **Transmission** selective gear fixed ratio **Nominal travel speeds mph (km/h)** first 1.94 (3.13) second 2.78 (4.48) third 3.93 (6.33) fourth 5.51 (8.87) fifth 6.44 (10.36) sixth 9.72 (15.64) seventh 13.74 (22.11) eighth 19.26 (31.00) reverse 2.32 (3.74), 3.32 (5.34), 4.70 (7.56), 6.58 (10.59) **Clutch** single dry disc operated by foot pedal **Brakes** single wet disc mechanically operated by two foot pedals which can be locked together **Steering** hydrostatic **Power take-off** 540 rpm at 2199 engine rpm **Unladen tractor mass** 4520 lb (2050 kg)

THREE POINT HITCH PERFORMANCE (OECD Static Test)

Quick Attach: None

Maximum Force Exerted Through Whole Range: (14.1 kN)

- i) Opening pressure of relief valve:
Sustained pressure of the open relief valve: 2820 psi
 - ii) Pump delivery rate at minimum pressure: 11.8 GPM (44.7 l/min)
- hydraulic power: 9.9 GPM
Delivery pressure: 2540 psi
Power: 14.7 HP

THREE POINT HITCH PERFORMANCE

Observed Maximum Pressure psi: 2760 (190)
hydraulic service port
Hydraulic oil temperature: °F(°C) 158(70)
Location: hydraulic sump
Category: II
Quick attach: none

SAE Static Test System pressure 2485 psi (171 Bar)

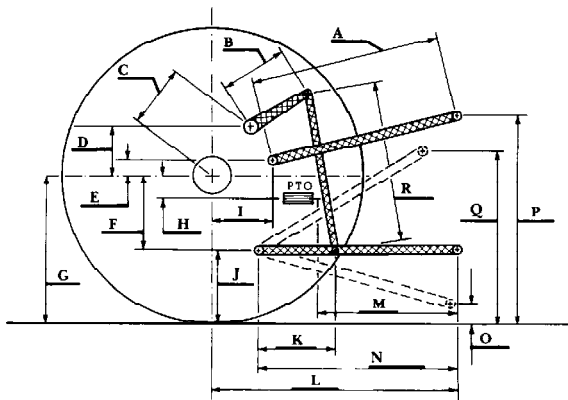
Hitch point distance to ground level in. (mm)	8.0 (203)	15.0 (381)	22.0 (559)	29.0 (737)	36.0 (914)
Lift force on frame lb	3812	4190	4356	4275	4124
" " " " " (kN)	(17.0)	(18.6)	(19.4)	(19.0)	(18.3)

ASAE Static Test System pressure 2755 psi (190 Bar)

Hitch point distance to ground level in. (mm)	8.0 (203)	15.0 (381)	22.0 (559)	29.0 (737)	36.0 (914)
Lift force on frame lb	4227	4680	4884	4776	4568
" " " " " (kN)	(18.8)	(20.8)	(21.7)	(21.2)	(20.7)

	SAE/ASAE Test		OECD Test	
	inch	mm	inch	mm
A	24.3	617	25.2	641
B	11.4	290	11.4	290
C	13.2	334	13.2	334
D	12.1	308	12.1	308
E	12.0	305	12.0	305
F	4.9	124	4.9	124
G	26.4	670	26.4	670
H	1.8	46	1.8	46
I	12.0	305	12.0	305
J	21.5	546	21.5	546
K	15.8	402	15.8	402
L	36.2	918	36.2	918
M	21.9	555	21.9	555
N	29.9	760	29.9	760
O	8.0	203	8.0	203
P	40.5	1029	45.5	1156
Q	36.1	916	36.1	916
R	22.5	572	22.5	572

HITCH DIMENSIONS AS TESTED - NO LOAD



John Deere 5205 Diesel

REPAIRS AND ADJUSTMENTS: No repairs or adjustments

REMARKS: All test results were determined from observed data obtained in accordance with official OECD, SAE and Nebraska test procedures. For the maximum power tests, the fuel temperature at the injection pump inlet was maintained at 127°F (53°C).

We, the undersigned, certify that this is a true and correct report of official Tractor Test No. 1771, July 7, 2000.

Leonard L. Bashford
Director

G. J. Hoffman
M. F. Kocher
R. D. Grisso Jr.
Board of Tractor Test Engineers