

University of Nebraska - Lincoln

DigitalCommons@University of Nebraska - Lincoln

Historical Materials from University of
Nebraska-Lincoln Extension

Extension

4-1944

EC787 Watering Equipment for Hogs

Follow this and additional works at: <https://digitalcommons.unl.edu/extensionhist>

"EC787 Watering Equipment for Hogs" (1944). *Historical Materials from University of Nebraska-Lincoln Extension*. 2289.

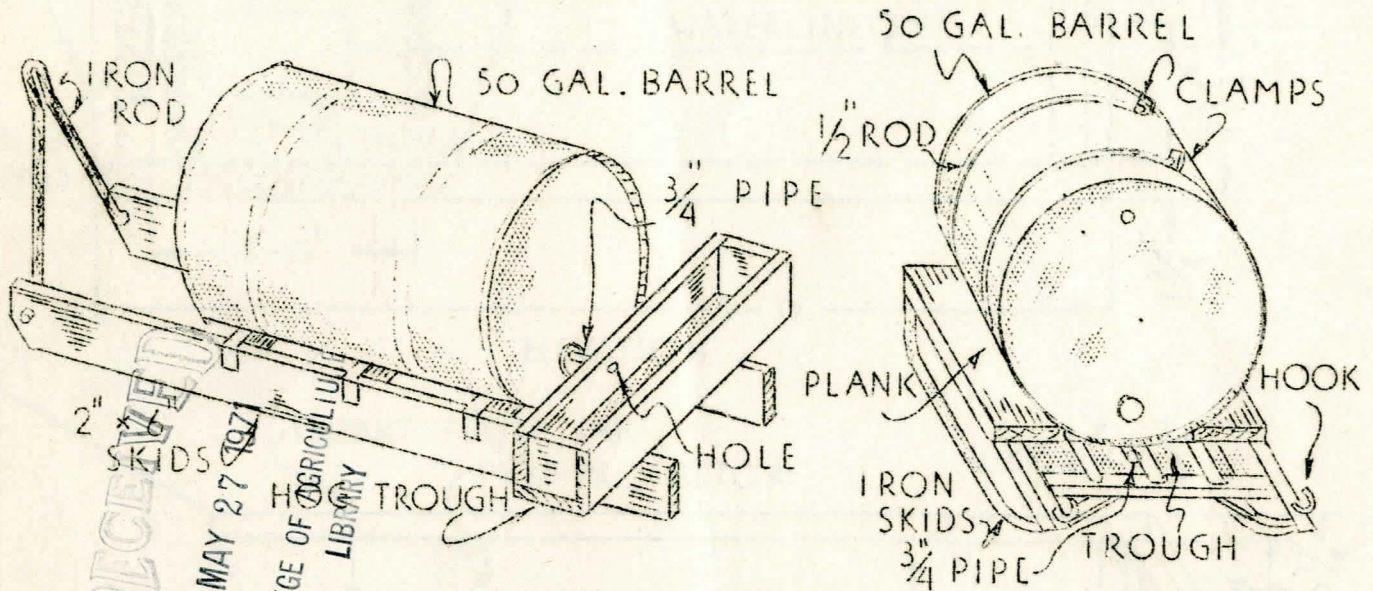
<https://digitalcommons.unl.edu/extensionhist/2289>

This Article is brought to you for free and open access by the Extension at DigitalCommons@University of Nebraska - Lincoln. It has been accepted for inclusion in Historical Materials from University of Nebraska-Lincoln Extension by an authorized administrator of DigitalCommons@University of Nebraska - Lincoln.

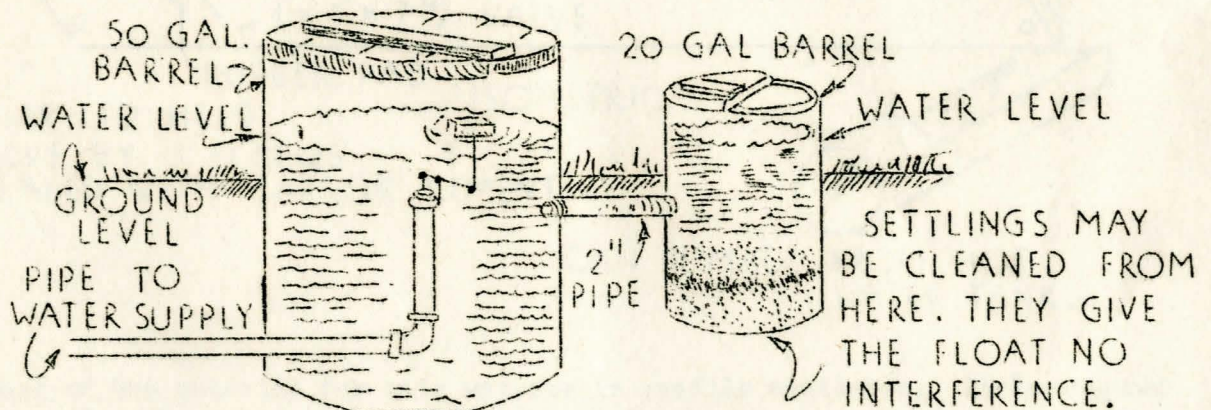
85
 April
 1944
 #787

WATERING EQUIPMENT FOR HOGS

Here are some types of watering equipment adaptable to both temporary, movable, and permanent arrangements. For those interested in permanent, concrete waterers for hogs and sheep, plans are available through Agricultural Agents.

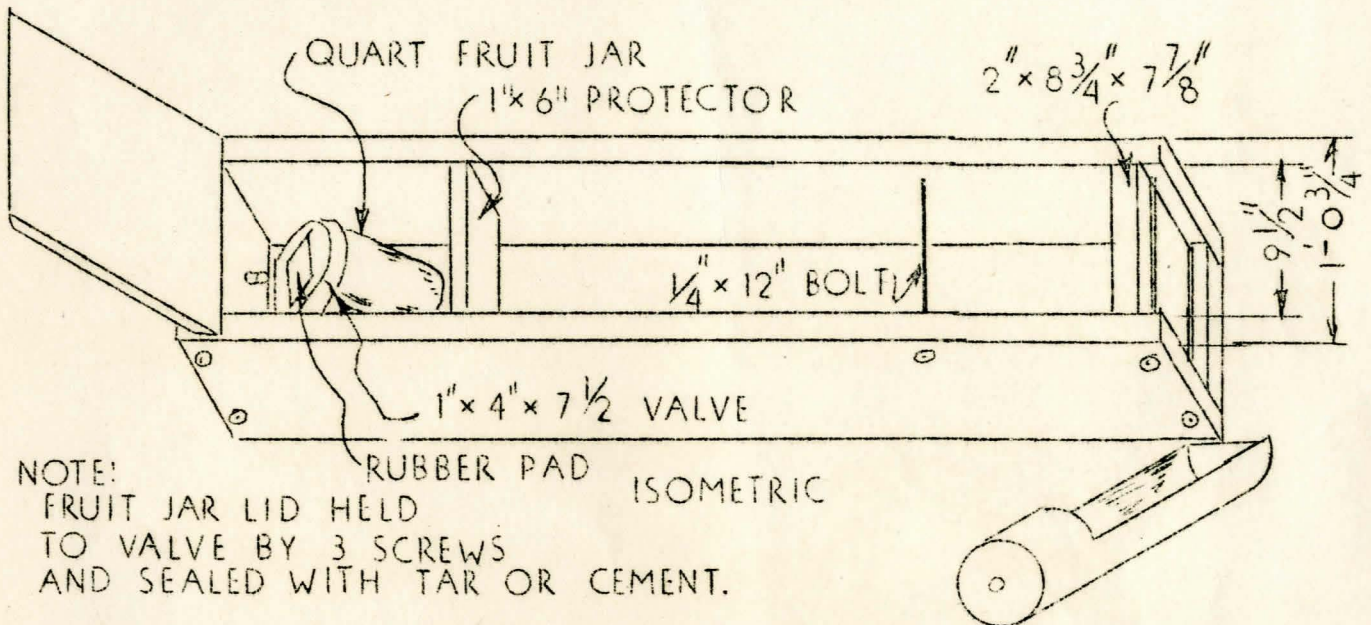
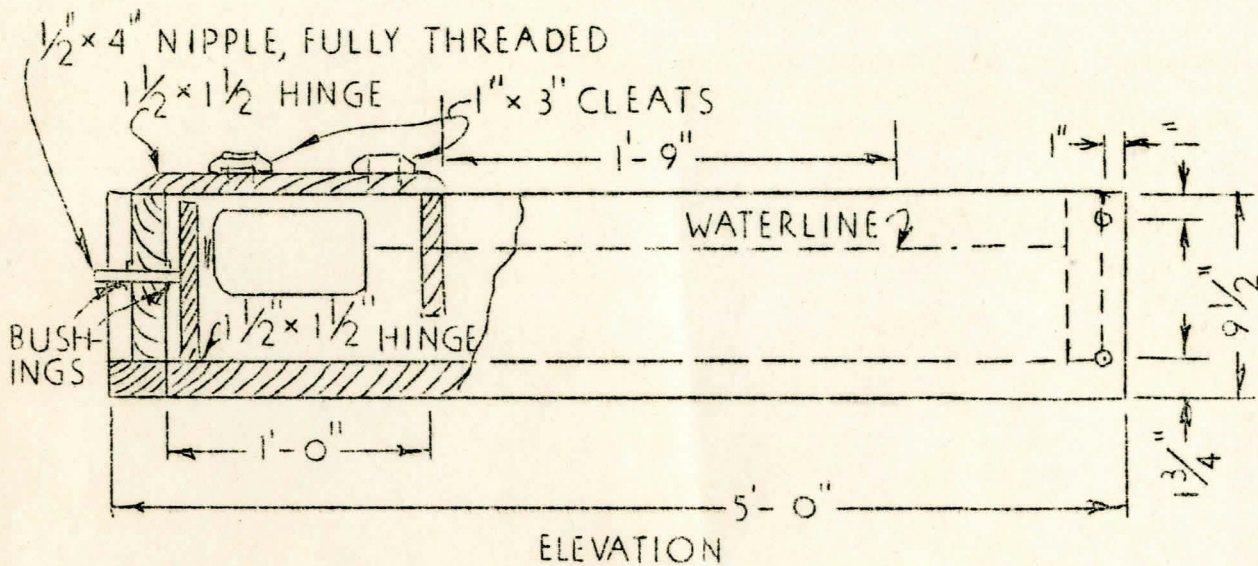


Two barrel type waterers that can be made at home. They are portable. They operate on a vacuum so the barrel must be air tight. Water will flow into the trough until the level is above the opening. The outlet should be arranged so that it can be plugged when filling the barrel. Plank construction can be used in place of the metal skids on the one type. Barrels should be fastened down with heavy wire.



COULD BE USED FOR CATTLE - COVER FLOAT BARREL WITH MANURE IN WINTER TIME.

Pressure supply waterer made from 2 barrels of 50 and 20 gallon capacities. With the float in the larger barrel, the drinking place can be easily cleaned. A cattle waterer can be made by using 2 - 50 gallon barrels. For winter use, a second pipe above or below the one connecting the two barrels can be used. Then covering the float barrel with manure and banking the drinking part will help prevent freezing.



CAN BE MADE FROM HOT WATER TANK.

Most of the material for this waterer is readily available. It is adapted to a pressure line on the farm or may be attached to a stock tank or other supply source in the field. This waterer could be made by using an old hot water tank by cutting the tank in two within 18 inches of one end. The float assembly could be placed in this end and protected from the trough part by a baffle.