

University of Nebraska - Lincoln

DigitalCommons@University of Nebraska - Lincoln

---

Nebraska Tractor Tests

Tractor Test and Power Museum, The Lester F. Larsen

---

2008

## Tractor Test 1919: New Holland TT 60A

Nebraska Tractor Test Lab

University of Nebraska-Lincoln, [tractortestlab@unl.edu](mailto:tractortestlab@unl.edu)

Follow this and additional works at: <https://digitalcommons.unl.edu/tractormuseumlit>



Part of the [Energy Systems Commons](#), [History of Science, Technology, and Medicine Commons](#), [Other Mechanical Engineering Commons](#), [Physical Sciences and Mathematics Commons](#), [Science and Mathematics Education Commons](#), and the [United States History Commons](#)

---

Nebraska Tractor Test Lab, "Tractor Test 1919: New Holland TT 60A" (2008). *Nebraska Tractor Tests*. 2280.

<https://digitalcommons.unl.edu/tractormuseumlit/2280>

This Article is brought to you for free and open access by the Tractor Test and Power Museum, The Lester F. Larsen at DigitalCommons@University of Nebraska - Lincoln. It has been accepted for inclusion in Nebraska Tractor Tests by an authorized administrator of DigitalCommons@University of Nebraska - Lincoln.

# NEBRASKA TRACTOR TEST 1919

## NEW HOLLAND TT 60A DIESEL

### 8 SPEED

#### POWER TAKE-OFF PERFORMANCE

Power HP (kW)	Crank shaft speed rpm	Gal/hr (l/h)	lb/hp.hr (kg/kW.h)	Hp.hr/gal (kW.h/l)	Mean Atmospheric Conditions
MAXIMUM POWER AND FUEL CONSUMPTION					
Rated Engine Speed—(PTO speed—686 rpm)					
48.95 (36.50)	2500	2.97 (11.25)	0.426 (0.259)	16.47 (3.24)	
Maximum Power (1 hour)					
49.50 (36.91)	2400	2.93 (11.10)	0.415 (0.253)	16.88 (3.33)	
Standard Power Take-off Speed(540 rpm)					
46.28 (34.51)	1967	2.63 (9.96)	0.398 (0.242)	17.60 (3.47)	

#### VARYING POWER AND FUEL CONSUMPTION

48.95 (36.50)	2500	2.97 (11.25)	0.426 (0.259)	16.47 (3.24)	Air temperature
43.47 (32.42)	2615	2.70 (10.21)	0.435 (0.264)	16.12 (3.18)	76°F (25°C)
33.04 (24.64)	2634	2.21 (8.37)	0.469 (0.285)	14.94 (2.94)	Relative humidity
22.17 (16.53)	2661	1.73 (6.54)	0.546 (0.332)	12.84 (2.53)	16%
11.16 (8.32)	2704	1.30 (4.92)	0.815 (0.496)	8.60 (1.69)	Barometer
1.00 (0.75)	2736	0.94 (3.57)	6.594 (4.011)	1.06 (0.21)	28.62"Hg (96.92 kPa)

Maximum torque 148 lb.-ft. (200 Nm) at 1297 rpm  
Maximum torque rise - 43.4%  
Torque rise at 2000 rpm - 19%

#### TRACTOR SOUND LEVEL WITHOUT CAB

	dB(A)
At no load in 3rd (L3) gear	92.3
Bystander	--

#### TIRES AND WEIGHT

**Rear Tires**—No., size, ply & psi (kPa)  
**Front Tires**—No., size, ply & psi (kPa)  
**Height of Drawbar**  
**Static Weight with operator**—Rear  
—Front  
—Total

#### Tested without ballast

Two 14.9-28; 6:12 (85)  
Two 7.50-16; 6:32 (220)  
16.0 in (405 mm)  
2950 lb (1338 kg)  
1720 lb (780 kg)  
4670 lb (2118 kg)

**Location of tests:** Nebraska Tractor Test Laboratory, University of Nebraska, Lincoln Nebraska 68583-0832

**Dates of tests:** March 13-18, 2008

**Manufacturer:** New Holland Tractors (I) Pvt Ltd Udyog Kendra, Plot No. 3 Greater Noida - 201303 U.P. India

**FUEL, OIL and TIME:** Fuel No. 2 Diesel Specific gravity converted to 60°/60° F (15°/15°C) 0.8417 Fuel weight 7.008 lbs/gal (0.840 kg/l) Oil SAE 15W40 API service classification CF-4 Transmission and hydraulic lubricant New Holland M2C134D fluid Total time engine was operated 15.0 hours

**ENGINE:** Make Iveco Diesel Type three cylinder vertical Serial No. 758072 Crankshaft lengthwise Rated engine speed 2500 Bore and stroke 4.094" x 4.528" (104.0 mm x 115.0 mm) Compression ratio 18.0 to 1 Displacement 179 cu in (2931 ml) Starting system 12 volt Lubrication pressure Air cleaner one paper element and one felt element Oil filter one full flow cartridge Fuel filter one paper cartridge Muffler underhood Exhaust horizontal Cooling medium temperature control one thermostat

**ENGINE OPERATING PARAMETERS:** Fuel rate: 20.7 - 22.7 lb/h (9.4 - 10.3 kg/h) High idle: 2710 - 2790 rpm

**CHASSIS:** Type standard Serial No. 271048 Tread width rear 56.1" (1426 mm) to 76.6" (1945 mm) front 55.5" (1410 mm) to 71.3" (1810 mm) Wheelbase 81.7" (2075 mm) Hydraulic control system direct engine drive Transmission selective gear fixed ratio Nominal travel speeds mph (km/h) first 1.91 (3.08) second 2.81 (4.53) third 4.13 (6.64) fourth 5.33 (8.57) fifth 6.89 (11.08) sixth 10.14 (16.32) seventh 14.85 (23.90) eighth 19.18 (30.87) reverse 2.69 (4.33), 9.68 (15.58) Clutch single dry disc operated by foot pedal Brakes single wet disc operated by two foot pedals which can be locked together Steering hydrostatic Power take-off 540 rpm at 1967 engine rpm Unladen tractor mass 4495 lb (2038 kg)

### THREE POINT HITCH PERFORMANCE (OECD Static Test)

CATEGORY: II

Quick Attach: None

Maximum force exerted through whole range: 1985 lbs (8.8 kN) (at 24" point)  
2696 lbs (12.0 kN) (at ball ends)

i) Sustained pressure of the open relief valve: 2659 psi (183 bar)

ii) Pump delivery rate at minimum pressure and rated engine speed: 11.4 GPM (43.2 l/min)

iii) Pump delivery rate at maximum

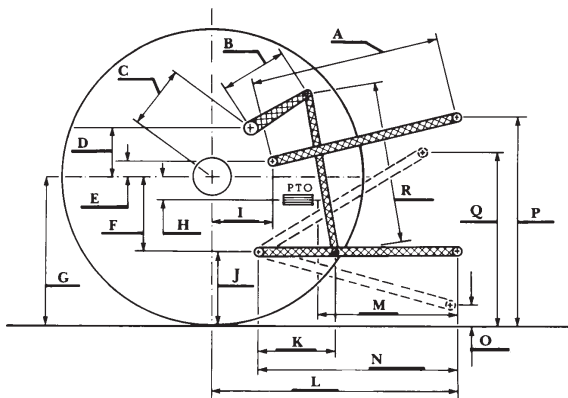
hydraulic power: 10.6 GPM (40.3 l/min)

Delivery pressure: 2613 psi (180 bar)

Power: 16.2 HP (12.1 kW)

#### HITCH DIMENSIONS AS TESTED - NO LOAD

	inch	mm
A	30.7	780
B	9.1	230
C	13.5	342
D	13.4	340
E	12.4	315
F	4.3	110
G	25.2	640
H	0.4	10
I	5.3	135
J	20.9	530
K	16.3	415
L	34.7	881
M	24.4	621
N	33.3	846
O	8.0	203
P	44.9	1140
Q	35.0	889
R	22.5	571



New Holland TT 60A Diesel

Institute of Agriculture and Natural Resources  
University of Nebraska-Lincoln

**REPAIRS AND ADJUSTMENTS:** No repairs or adjustments

**REMARKS:** All test results were determined from observed data obtained in accordance with official OECD, SAE and Nebraska test procedures. This tractor did not meet the manufacturer's claim of 3362 lb (1525 kg) 3 point hitch lift capacity. For the maximum power tests, the fuel temperature at the fuel filter was maintained at 136°F (58°C).

We, the undersigned, certify that this is a true and correct report of official Tractor Test No. **1919**, May 8, 2008.

Roger M. Hoy  
Director

M.F. Kocher  
V.I. Adamchuk  
J.A. Smith  
Board of Tractor Test Engineers