

University of Nebraska - Lincoln

DigitalCommons@University of Nebraska - Lincoln

Nebraska Tractor Tests

Tractor Test and Power Museum, The Lester F. Larsen

2010

Test 1966: John Deere 8225R

Nebraska Tractor Test Lab

University of Nebraska-Lincoln, tractortestlab@unl.edu

Follow this and additional works at: <https://digitalcommons.unl.edu/tractormuseumlit>



Part of the [Energy Systems Commons](#), [History of Science, Technology, and Medicine Commons](#), [Other Mechanical Engineering Commons](#), [Physical Sciences and Mathematics Commons](#), [Science and Mathematics Education Commons](#), and the [United States History Commons](#)

Nebraska Tractor Test Lab, "Test 1966: John Deere 8225R" (2010). *Nebraska Tractor Tests*. 2392.
<https://digitalcommons.unl.edu/tractormuseumlit/2392>

This Article is brought to you for free and open access by the Tractor Test and Power Museum, The Lester F. Larsen at DigitalCommons@University of Nebraska - Lincoln. It has been accepted for inclusion in Nebraska Tractor Tests by an authorized administrator of DigitalCommons@University of Nebraska - Lincoln.

NEBRASKA OECD TRACTOR TEST 1966—SUMMARY 727

JOHN DEERE 8225R DIESEL

16 SPEED

Location of tests: Nebraska Tractor Test Laboratory, University of Nebraska, Lincoln, Nebraska 68583-0832

Dates of tests: April 19 -30, 2010

Manufacturer: John Deere Tractor Works, 3500 East Donald St., P.O. Box 270, Waterloo Ia, 50704-0270

FUEL, OIL and TIME: Fuel No. 2 Diesel Specific gravity converted to 60°/60°F (15°/15°C) 0.8433 Fuel weight 7.022 lbs/gal (0.842 kg/l) Oil SAE 15W-40 API service classification CI-4 Transmission and hydraulic lubricant John Deere Hy-Gard fluid Front axle lubricant John Deere Hy-Gard fluid Total time engine was operated: 24.0 hours

ENGINE: Make John Deere Diesel Type six cylinder vertical with turbocharger and air to air aftercooler Serial No.*RG6090L069531* Crankshaft lengthwise Rated engine speed 2100 Bore and stroke 4.661" x 5.354" (118.4 mm x 136.0 mm) Compression ratio 16.3 to 1 Displacement 548 cu in (8984 ml) Starting system 12 volt Lubrication pressure Air cleaner two paper elements and aspirator Oil filter one full flow cartridge Oil cooler engine coolant heat exchanger for crankcase oil, radiator for hydraulic and transmission oil Fuel filter one paper element and water separator Fuel cooler radiator for pump return fuel Muffler vertical Cooling medium temperature control 2 thermostats and variable speed fan

ENGINE OPERATING PARAMETERS: Fuel rate: 73.0 - 78.9 lb/h (33.1 - 35.8 kg/h) High idle: 2175 - 2225 rpm Turbo boost: nominal 18.9 - 23.2 psi (130 - 160 kPa) as measured 20.0 psi (138 kPa)

CHASSIS: Type front wheel assist Serial No.*1RW8225RT9P003410* Tread width rear 60.0" (1524 mm) to 132.5" (3368 mm) front 60.0" (1524 mm) to 88.0" (2235 mm) Wheelbase 118.9" (3020 mm) Hydraulic control system direct engine drive Transmission selective gear fixed ratio with full range operator controlled power shift Nominal travel speeds mph (km/h) first 1.12 (1.81) second 1.51 (2.43) third 2.01 (3.24) fourth 2.69 (4.33) fifth 3.02 (4.86) sixth 3.48 (5.60) seventh 4.05 (6.51) eighth 4.66 (7.50) ninth 5.39 (8.67) tenth 6.21 (9.99) eleventh 7.21 (11.61) twelfth 8.31 (13.38) thirteenth 9.80 (15.77) fourteenth 13.12 (21.12) fifteenth 17.47 (28.12) sixteenth 23.41 (37.67) reverse 1.06 (1.70), 2.83 (4.55), 3.57 (5.74), 6.55 (10.54) @1500 engine rpm Clutch wet multiple disc hydraulically actuated by foot pedal Brakes wet multiple disc hydraulically operated by two foot pedals that can be locked together Steering hydrostatic Power take-off 1000 rpm at 2004 engine rpm Unladen tractor mass 21745 lb (9863 kg)

POWER TAKE-OFF PERFORMANCE

Power HP (kW)	Crank shaft speed rpm	Gal/hr (l/h)	lb/hp.hr (kg/kW.h)	Hp.hr/gal (kW.h/l)	Mean Atmospheric Conditions
MAXIMUM POWER AND FUEL CONSUMPTION					
Rated Engine Speed—(PTO speed—1048 rpm)					
190.28 (141.89)	2100	10.64 (40.27)	0.393 (0.239)	17.89 (3.52)	
Standard Power Take-off Speed(1000 rpm)					
211.42 (157.66)	2004	11.35 (42.96)	0.377 (0.229)	18.63 (3.67)	
Maximum Power (1 hour)					
221.13 (164.89)	1800	11.52 (43.59)	0.366 (0.222)	19.20 (3.78)	

VARYING POWER AND FUEL CONSUMPTION

190.28 (141.89)	2100	10.64 (40.27)	0.393 (0.239)	17.89 (3.52)	Air temperature
166.15 (123.90)	2152	9.81 (37.14)	0.415 (0.252)	16.93 (3.34)	73°F (23°C)
125.32 (93.45)	2162	8.06 (30.50)	0.451 (0.275)	15.55 (3.06)	Relative humidity
84.33 (62.88)	2172	6.42 (24.31)	0.535 (0.325)	13.13 (2.59)	19%
42.72 (31.86)	2183	4.63 (17.52)	0.761 (0.463)	9.23 (1.82)	Barometer
2.09 (1.56)	2193	3.54 (13.40)	11.879 (7.226)	0.59 (0.12)	28.96" Hg (98.07 kPa)
Maximum torque - 710 lb.-ft. (963 Nm) at 1451 rpm					
Maximum torque rise - 49.5%					
Torque rise at 1700 engine rpm - 43%					
Power increase at 1800 rpm - 16.2%					

DRAWBAR PERFORMANCE

UNBALLASTED - FRONT DRIVE ENGAGED

FUEL CONSUMPTION CHARACTERISTICS

Power Hp (kW)	Drawbar pull lbs (kN)	Speed mph (km/h)	Crank- shaft speed rpm	Slip %	Fuel Consumption lb/hp.hr (kg/kW.h)	Hp.hr/gal (kW.h/l)	Temp.°F (°C) cool- ing med	Air dry bulb	Barom. inch Hg (kPa)
Maximum Power—8th Gear									
167.39 (124.82)	13623 (60.60)	4.61 (7.41)	2098	4.5	0.445 (0.271)	15.76 (3.11)	180 (82)	58 (14)	28.65 (97.03)
75% of Pull at Maximum Power—8th Gear									
130.88 (97.60)	10230 (45.50)	4.80 (7.72)	2155	3.2	0.492 (0.299)	14.29 (2.81)	182 (83)	59 (15)	28.65 (97.03)
50% of Pull at Maximum Power—8th Gear									
88.62 (66.08)	6809 (30.29)	4.88 (7.85)	2166	2.0	0.571 (0.347)	12.30 (2.42)	180 (82)	64 (18)	28.62 (96.92)
75% of Pull at Reduced Engine Speed—11th Gear									
130.48 (97.30)	10143 (45.12)	4.83 (7.77)	1400	3.1	0.413 (0.251)	17.00 (3.35)	183 (84)	60 (16)	28.65 (97.03)
50% of Pull at Reduced Engine Speed—11th Gear									
88.40 (65.92)	6845 (30.45)	4.84 (7.79)	1391	2.0	0.446 (0.271)	15.73 (3.10)	178 (81)	65 (18)	28.61 (96.88)

DRAWBAR PERFORMANCE
UNBALLASTED - FRONT DRIVE ENGAGED - 2100 RPM
MAXIMUM POWER IN SELECTED GEARS

Power Hp (kW)	Drawbar pull lbs (kN)	Speed mph (km/h)	Crank- shaft speed rpm	Slip %	Fuel Consumption lb/hp.hr (kg/kW.h)	Hp.hr/gal (kW.h/l)	Temp.°F (°C) cool- ing med	Air dry bulb	Barom. inch Hg (kPa)
5th Gear									
147.37 (109.89)	19604 (87.20)	2.82 (4.54)	2130	12.0	0.488 (0.297)	14.38 (2.83)	179 (82)	53 (12)	28.66 (97.05)
6th Gear									
162.29 (121.02)	18342 (81.59)	3.32 (5.34)	2100	8.6	0.460 (0.280)	15.25 (3.01)	180 (82)	54 (12)	28.65 (97.02)
7th Gear									
167.40 (124.83)	15869 (70.59)	3.96 (6.36)	2099	5.6	0.446 (0.271)	15.74 (3.10)	180 (82)	55 (13)	28.65 (97.02)
8th Gear									
167.39 (124.82)	13623 (60.60)	4.61 (7.41)	2098	4.5	0.445 (0.271)	15.76 (3.11)	180 (82)	58 (14)	28.65 (97.02)
9th Gear									
167.17 (124.66)	11696 (52.03)	5.36 (8.63)	2096	3.8	0.447 (0.272)	15.72 (3.10)	182 (83)	58 (14)	28.65 (97.02)
10th Gear									
167.49 (124.89)	10069 (44.79)	6.24 (10.04)	2098	2.9	0.445 (0.270)	15.79 (3.11)	184 (84)	62 (17)	28.64 (96.99)
11th Gear									
162.56 (121.22)	8379 (37.27)	7.28 (11.71)	2100	2.5	0.463 (0.282)	15.16 (2.99)	184 (85)	63 (17)	28.64 (96.99)
12th Gear									
161.07 (120.11)	7184 (31.95)	8.41 (13.53)	2097	1.8	0.468 (0.285)	15.00 (2.95)	185 (85)	63 (17)	28.63 (96.95)

REPAIRS AND ADJUSTMENTS: No repairs or adjustments.

REMARKS: All test results were determined from observed data obtained in accordance with official OECD, SAE and Nebraska test procedures. For the maximum power tests the fuel temperature at the injection pump inlet was maintained at 121°F(50°C). The drawbar pull in 3rd gear (ballasted tractor) was limited to avoid excessive power hop. The performance figures on this summary were taken from a test conducted under the OECD Code 2 test code procedure.

We, the undersigned, certify that this is a true and correct report of official Tractor Test No. **1966**, Nebraska Summary 727, July 27, 2010.

Roger M. Hoy
Director

M.F. Kocher
D.R. Keshwani
J.A. Smith
Board of Tractor Test Engineers

TRACTOR SOUND LEVEL WITH CAB	Front Wheel Drive	
	Engaged dB(A)	Disengaged dB(A)
At no load in 8th gear	71.4	71.3
Transport speed-no load- 16th gear		73.7
Bystander in 16th gear		84.7

TIRES, BALLAST AND WEIGHT

	With Ballast	Without Ballast
Rear Tires - No., size, ply & psi(kPa)	Four 480/80R46;***,13(90)	Two 480/80R46;***,19(130)
Ballast - Duals (total)	1770 lb (803 kg)	None
- Cast Iron (total)	2745 lb (1245 kg)	None
Front Tires - No., size, ply & psi(kPa)	Two 16.9R30;***,25(170)	Two 16.9R30;***,23(160)
Ballast - Liquid (total)	None	None
- Cast Iron (total)	385 lb (174 kg)	None
Height of Drawbar	18.5 in (470 mm)	18.5 in (470 mm)
Static Weight with operator - Rear	17160 lb (7784 kg)	12820 lb (5815 kg)
- Front	9660 lb (4381 kg)	9100 lb (4128 kg)
- Total	26820 lb (12165 kg)	21920 lb (9943 kg)

DRAWBAR PERFORMANCE
UNBALLASTED-FRONT DRIVE ENGAGED - 1800 RPM
MAXIMUM POWER IN SELECTED GEARS

Power Hp (kW)	Drawbar pull lbs (kN)	Speed mph (km/h)	Crank- shaft speed rpm	Slip %	Fuel Consumption lb/hp.hr (kg/kW.h)	Hp.hr/gal (kW.h/l)	Temp. °F(°C) cool- ing med	Air dry bulb	Barom. inch Hg (kPa)
5th Gear									
147.62 (110.08)	19651 (87.41)	2.82 (4.54)	2128	12.2	0.492 (0.299)	14.28 (2.81)	180 (82)	53 (12)	28.66 (97.05)
6th Gear									
163.44 (121.88)	18758 (83.44)	3.27 (5.26)	2090	9.7	0.464 (0.282)	15.14 (2.98)	180 (82)	55 (13)	28.65 (97.02)
7th Gear									
179.60 (133.92)	18270 (81.27)	3.69 (5.94)	2013	8.4	0.444 (0.270)	15.82 (3.12)	183 (84)	57 (14)	28.65 (97.02)
8th Gear									
190.31 (141.91)	17578 (78.19)	4.06 (6.53)	1903	7.5	0.422 (0.257)	16.63 (3.28)	187 (86)	58 (14)	28.65 (97.02)
9th Gear									
194.38 (144.95)	16228 (72.19)	4.49 (7.23)	1801	6.1	0.416 (0.253)	16.88 (3.32)	194 (90)	59 (15)	28.65 (97.02)
10th Gear									
197.46 (147.24)	14089 (62.67)	5.26 (8.46)	1802	4.6	0.413 (0.251)	17.02 (3.35)	201 (94)	64 (18)	28.62 (96.92)
11th Gear									
196.15 (146.27)	11950 (53.16)	6.16 (9.91)	1797	3.5	0.411 (0.250)	17.07 (3.36)	195 (91)	63 (17)	28.63 (96.95)
12th Gear									
194.93 (145.36)	10206 (45.40)	7.17 (11.53)	1803	2.8	0.422 (0.257)	16.65 (3.28)	195 (90)	63 (17)	28.63 (96.95)
13th Gear									
193.30 (144.14)	8531 (37.95)	8.50 (13.67)	1801	2.3	0.417 (0.254)	16.85 (3.32)	199 (93)	64 (18)	28.63 (96.95)

DRAWBAR PERFORMANCE
BALLASTED - FRONT DRIVE ENGAGED - 1800 RPM
MAXIMUM POWER IN SELECTED GEARS

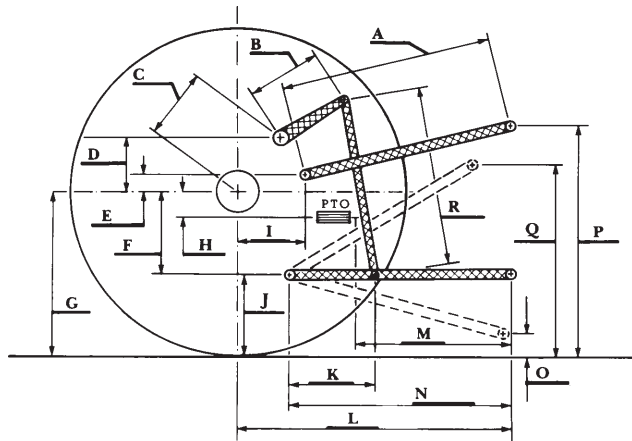
Power Hp (kW)	Drawbar pull lbs (kN)	Speed mph (km/h)	Crank- shaft speed rpm	Slip %	Fuel Consumption lb/hp.hr (kg/kW.h)	Hp.hr/gal (kW.h/l)	Temp. °F(°C) cool- ing med	Air dry bulb	Barom. inch Hg (kPa)
132.06 (98.47)	25159 (111.91)	1.97 (3.17)	2153	7.8	3rd Gear 0.511 (0.311)	13.73 (2.71)	179 (82)	48 (9)	28.80 (97.53)
165.90 (123.71)	24219 (107.73)	2.57 (4.14)	2075	6.6	4th Gear 0.456 (0.278)	15.38 (3.03)	180 (82)	51 (11)	28.81 (97.56)
179.64 (133.95)	23854 (106.11)	2.83 (4.55)	2029	6.4	5th Gear 0.433 (0.264)	16.21 (3.19)	180 (82)	51 (11)	28.82 (97.60)
189.53 (141.33)	23179 (103.10)	3.07 (4.94)	1905	6.0	6th Gear 0.425 (0.258)	16.54 (3.26)	187 (86)	52 (11)	28.82 (97.60)
197.21 (147.06)	21620 (96.17)	3.42 (5.50)	1807	4.7	7th Gear 0.410 (0.250)	17.11 (3.37)	189 (87)	53 (12)	28.82 (97.60)
198.42 (147.96)	18708 (83.22)	3.98 (6.41)	1803	3.6	8th Gear 0.408 (0.248)	17.21 (3.39)	192 (89)	54 (12)	28.83 (97.63)
198.32 (147.88)	16056 (71.42)	4.63 (7.45)	1804	2.8	9th Gear 0.408 (0.248)	17.19 (3.39)	189 (87)	55 (13)	28.83 (97.63)
198.08 (147.70)	13855 (61.63)	5.36 (8.63)	1803	2.4	10th Gear 0.409 (0.249)	17.17 (3.38)	196 (91)	56 (13)	28.84 (97.66)
195.33 (145.65)	11727 (52.17)	6.25 (10.05)	1801	1.9	11th Gear 0.411 (0.250)	17.07 (3.36)	192 (89)	57 (14)	28.85 (97.70)
193.13 (144.01)	10007 (44.51)	7.24 (11.65)	1803	1.6	12th Gear 0.415 (0.253)	16.90 (3.33)	197 (92)	59 (15)	28.85 (97.70)
190.95 (142.39)	8362 (37.20)	8.57 (13.78)	1805	1.3	13th Gear 0.422 (0.257)	16.63 (3.28)	194 (90)	59 (15)	28.86 (97.73)

HYDRAULIC PERFORMANCE

CATEGORY:	III	III	IVN
Quick Attach: Yes			
OECD Static test			
Lift cylinders:	<u>2 x 90 mm</u>	<u>2x100 mm</u>	<u>2x112 mm</u>
Maximum force exerted through whole range:	12588 lbs (56.0 kN)	15683 lbs (69.8 kN)	18326 lbs (81.5 kN)

	<u>63 cc pump</u>	<u>85 cc pump</u>
i) Sustained pressure at compensator cutoff:	2940 psi (203 bar)	2912 psi (201 bar)
	three outlet sets combined	
ii) Pump delivery rate at minimum pressure and rated engine speed:	46.4 GPM (175.7 l/min)	63.6 GPM (240.9 l/min)
iii) Pump delivery rate at maximum hydraulic power:	46.0 GPM (174.1 l/min)	63.4 GPM (240.1 l/min)
Delivery pressure:	2690 psi (185 bar)	2450 psi (169 bar)
Power:	72.2 HP (53.8 kW)	90.7 HP (67.6 kW)
	single outlet set	
ii) Pump delivery rate at minimum pressure and rated engine speed:	40.8 GPM (154.6 l/min)	40.5 GPM (153.3 l/min)
iii) Pump delivery rate at maximum hydraulic power:	40.4 GPM (153.0 l/min)	39.7 GPM (150.3 l/min)
Delivery pressure:	2119 psi (146 bar)	2097 psi (145 bar)
Power:	50.0 HP (37.3 kW)	48.6 HP (36.2 kW)

HITCH DIMENSIONS AS TESTED—NO LOAD



	Category III		Category IVN	
	inch	mm	inch	mm
A	29.3	744	27.1	689
B	20.5	520	20.5	520
C	20.9	532	20.9	532
D	18.9	480	18.9	480
E	12.0	304	12.0	304
F	14.4	365	14.4	365
G	35.6	905	37.0	940
H	7.9	200	7.9	200
I	21.9	555	21.9	555
J	21.2	540	22.6	575
K	28.7	730	28.9	733
L	49.3	1252	56.6	1438
*L'	53.4	1357	62.5	1588
M	22.4	569	29.7	755
N	42.6	1081	45.7	1162
O	9.0	230	9.0	230
P	43.2	1099	49.7	1262
Q	39.4	1001	40.7	1035
R	42.8	1087	43.5	1106

*L' to Quick Attach ends



JOHN DEERE 8225R DIESEL

Institute of Agriculture and Natural Resources
University of Nebraska–Lincoln