

University of Nebraska - Lincoln

DigitalCommons@University of Nebraska - Lincoln

Nebraska Tractor Tests

Tractor Test and Power Museum, The Lester F. Larsen

2011

Test 2010: Case IH Steiger 500

Nebraska Tractor Test Lab

University of Nebraska-Lincoln, tractortestlab@unl.edu

Follow this and additional works at: <https://digitalcommons.unl.edu/tractormuseumlit>



Part of the [Energy Systems Commons](#), [History of Science, Technology, and Medicine Commons](#), [Other Mechanical Engineering Commons](#), [Physical Sciences and Mathematics Commons](#), [Science and Mathematics Education Commons](#), and the [United States History Commons](#)

Nebraska Tractor Test Lab, "Test 2010: Case IH Steiger 500" (2011). *Nebraska Tractor Tests*. 2415.
<https://digitalcommons.unl.edu/tractormuseumlit/2415>

This Article is brought to you for free and open access by the Tractor Test and Power Museum, The Lester F. Larsen at DigitalCommons@University of Nebraska - Lincoln. It has been accepted for inclusion in Nebraska Tractor Tests by an authorized administrator of DigitalCommons@University of Nebraska - Lincoln.

NEBRASKA OECD TRACTOR TEST 2010 - SUMMARY 793

CASE IH STEIGER 500 DIESEL

16 SPEED

POWER TAKE-OFF PERFORMANCE

Power HP (kW)	Crank shaft speed rpm	Diesel Consumption Gal/hr (l/h)	lb/hp.hr (kg/kW.h)	Hp.hr/gal (kW.h/l)	D.E.F. Consumption Gal/hr (l/h)	Mean Atmospheric Conditions
MAXIMUM POWER AND FUEL CONSUMPTION						
Rated Engine Speed—(PTO speed—1051 rpm)						
456.09 (340.11)	2100	24.89 (94.21)	0.385 (0.234)	18.33 (3.61)	1.87 (7.09)	
Standard Power Take-off Speed (1000 rpm)						
488.61 (364.35)	1999	26.08 (98.74)	0.376 (0.229)	18.73 (3.69)	1.87 (7.09)	
Maximum Power (1 hour)						
508.03 (378.84)	1901	26.85 (101.62)	0.372 (0.227)	18.92 (3.73)	1.87 (7.09)	

VARYING POWER AND FUEL CONSUMPTION

456.09 (340.11)	2100	24.89 (94.21)	0.385 (0.234)	18.33 (3.61)	1.87 (7.08)	Air temperature
396.84 (295.92)	2148	22.35 (84.60)	0.397 (0.241)	17.76 (3.50)	1.66 (6.28)	73°F (23°C)
298.72 (222.75)	2155	17.91 (67.78)	0.422 (0.257)	16.68 (3.29)	1.09 (4.13)	Relative humidity
199.84 (149.02)	2163	13.46 (50.97)	0.475 (0.289)	14.84 (2.92)	0.68 (2.57)	14%
100.29 (74.78)	2170	8.93 (33.81)	0.629 (0.381)	11.23 (2.21)	0.42 (1.59)	Barometer
--	2179	4.39 (16.62)	--	--	0.11 (0.42)	28.71" Hg (97.22 kPa)

Maximum torque - 1614 lb.-ft. (2188 Nm) at 1401 rpm

Maximum torque rise - 41.5%

Torque rise at 1701 engine rpm - 30%

Power increase at 1900 engine rpm - 11.4%

DRAWBAR PERFORMANCE

FUEL CONSUMPTION CHARACTERISTICS

Power Hp (kW)	Drawbar pull lbs (kN)	Speed mph (km/h)	Crank- shaft speed rpm	Slip %	Fuel Consumption lb/hp.hr (kg/kW.h)	Hp.hr/gal (kW.h/l)	Temp. °F (°C) cool- ing med	Air dry bulb	Barom. inch Hg (kPa)
Maximum Power—5th Gear									
411.08 (306.54)	28373 (126.21)	5.43 (8.74)	2100	3.5	0.428 (0.260)	16.48 (3.25)	188 (87)	43 (6)	28.87 (97.77)
75% of Pull at Maximum Power—5th Gear									
317.62 (236.85)	21218 (94.38)	5.62 (9.04)	2149	2.6	0.455 (0.277)	15.48 (3.05)	181 (83)	44 (7)	28.86 (97.73)
50% of Pull at Maximum Power—5th Gear									
215.16 (160.44)	14187 (63.11)	5.69 (9.15)	2159	1.7	0.502 (0.305)	14.04 (2.77)	178 (81)	44 (7)	28.86 (97.73)
75% of Pull at Reduced Engine Speed—9th Gear									
317.24 (236.57)	21136 (94.02)	5.63 (9.05)	1481	2.5	0.399 (0.243)	17.64 (3.48)	173 (78)	44 (7)	28.86 (97.73)
50% of Pull at Reduced Engine Speed—9th Gear									
214.24 (159.76)	14132 (62.86)	5.69 (9.15)	1483	1.7	0.422 (0.256)	16.71 (3.29)	170 (77)	44 (7)	28.86 (97.73)

Location of tests: Nebraska Tractor Test Laboratory, University of Nebraska, Lincoln, Nebraska 68583-0832

Dates of tests: November 15-29, 2011

Manufacturer: CNH America LLC, 700 State St. Racine, Wi. 53404 USA

CONSUMABLE Fluids, OIL and TIME: Fuel No. 2 Diesel **Specific gravity converted to 60°/60°F (15°/15°C)** 0.8463 **Fuel weight** 7.047 lbs/gal (0.845 kg/l) **Diesel Exhaust Fluid (DEF)** 32% aqueous urea solution **DEF weight** 9.071 lbs/gal (1.087 kg/l) **Oil SAE 15W40 API service classification** CI-4 **Transmission lubricant** Case IH Hytran Ultra transmission fluid **Hydraulic and axle lubricant** Akcela Nexphlore hydraulic fluid **Total time engine was operated:** 17.5 hours

ENGINE: Make F.P.T. Diesel **Type** six cylinder vertical with turbocharger, air to air intercooler and D.E.F. (diesel exhaust fluid) exhaust treatment **Serial No.** *A-002-171030* **Crankshaft** lengthwise **Rated engine speed** 2100 **Bore and stroke** 5.315" x 5.906" (135.0 mm x 150.0 mm) **Compression ratio** 16.5 to 1 **Displacement** 786 cu in (12880 ml) **Starting system** 24 volt **Lubrication** pressure **Air cleaner** two paper elements and aspirator **Oil filter** one full flow cartridge **Oil cooler** engine coolant heat exchanger for crankcase oil, separate radiators for hydraulic and transmission oil **Fuel filter** two paper elements **Muffler** vertical **Cooling medium temperature control** thermostat and variable speed fan

ENGINE OPERATING PARAMETERS: Fuel rate: 167.3 - 179.0 lb/h (75.9 - 81.2 kg/h) **High idle:** 2150 - 2200 rpm **Turbo boost:** nominal 23.9 - 26.8 psi (165 - 185 kPa) as measured 25.1 psi (173 kPa)

CHASSIS: Type four wheel drive with triples **Serial No.** *ZBF125681* **Tread width** rear 73.6" (1870 mm) to 187.6" (4766 mm) front 73.6" (1870 mm) to 187.6" (4766 mm) **Wheelbase** 154.0" (3911 mm) **Hydraulic control system** direct engine drive **Transmission** selective gear fixed ratio with full range operator controlled powershift **Nominal travel speeds mph (km/h)** first 2.71 (4.36) second 3.27 (5.26) third 3.95 (6.36) fourth 4.75 (7.64) fifth 5.46 (8.79) sixth 6.00 (9.65) seventh 6.57 (10.57) eighth 7.22 (11.62) ninth 7.94 (12.78) tenth 8.72 (14.03) eleventh 9.56 (15.38) twelfth 10.52 (16.93) thirteenth 12.06 (19.41) fourteenth 14.53 (23.38) fifteenth 17.54 (28.23) sixteenth 21.14 (34.02) reverse 4.18 (6.73), 8.32 (13.39) **Clutch** multiple wet disc electrohydraulically operated by foot pedal **Brakes** wet disc hydraulically operated by foot pedal **Steering** hydrostatic and articulated **Power take-off** 1000 rpm at 1999 engine rpm **Unladen tractor mass** 47235 lb (21425 kg)

DRAWBAR PERFORMANCE AT 2100 ENGINE RPM MAXIMUM POWER IN SELECTED GEARS

Power Hp (kW)	Drawbar pull lbs (kN)	Speed mph (km/h)	Crank- shaft speed rpm	Slip %	Fuel Consumption lb/hp.hr (kg/kW.h)	Consumption Hp.hr/gal (kW.h/l)	Temp. °F (°C) cool- ing med	Air dry bulb	Barom. inch Hg (kPa)
362.05 (269.98)	46670 (207.60)	2.91 (4.68)	2129	14.9	2nd Gear 0.485 (0.295)	14.53 (2.86)	189 (87)	47 (8)	28.97 (98.10)
402.44 (300.10)	39841 (177.22)	3.79 (6.10)	2100	7.0	3rd Gear 0.440 (0.267)	16.03 (3.16)	190 (88)	50 (10)	28.97 (98.10)
410.52 (306.12)	32822 (146.00)	4.69 (7.55)	2100	4.4	4th Gear 0.428 (0.260)	16.48 (3.25)	185 (85)	43 (6)	28.86 (97.73)
411.08 (306.54)	28373 (126.21)	5.43 (8.74)	2100	3.5	5th Gear 0.428 (0.260)	16.48 (3.25)	188 (87)	43 (6)	28.87 (97.77)
411.61 (306.94)	25719 (114.40)	6.00 (9.66)	2100	3.0	6th Gear 0.429 (0.261)	16.44 (3.24)	187 (86)	41 (5)	28.86 (97.73)
409.14 (305.10)	23242 (103.38)	6.61 (10.63)	2100	2.7	7th Gear 0.428 (0.260)	16.47 (3.24)	187 (86)	42 (6)	28.86 (97.73)
409.72 (305.53)	21114 (93.92)	7.28 (11.72)	2100	2.5	8th Gear 0.430 (0.261)	16.40 (3.23)	188 (86)	43 (6)	28.85 (97.70)
406.81 (303.35)	18995 (84.49)	8.04 (12.93)	2100	2.2	9th Gear 0.433 (0.263)	16.27 (3.21)	189 (87)	43 (6)	28.87 (97.77)

REPAIRS AND ADJUSTMENTS: No repairs or adjustments.

REMARKS: All test results were determined from observed data obtained in accordance with official OECD, SAE and Nebraska test procedures. For the maximum power tests, the fuel temperature at the primary fuel filter was maintained at 111°F (44°C). The performance figures on this Summary were taken from a test conducted under the OECD Code 2 test procedure.

We, the undersigned, certify that this is a true and correct report of official Tractor Test No. **2010**, Nebraska Summary 793, January 12, 2012.

Roger M. Hoy
Director

M.F. Kocher
D.R. Keshwani
P.J. Jasa
Board of Tractor Test Engineers

TRACTOR SOUND LEVEL WITH CAB

	dB(A)
At no load in 4th gear	73.5
Bystander in 16th gear	89.0

TIRES AND WEIGHT

Rear Tires -No., size, ply & psi (kPa)
Front Tires -No., size, ply & psi (kPa)
Height of Drawbar
Static Weight with operator - Rear
 - Front
 - Total

Tested Without Ballast

Six 520/85R46;***,9(60)
 Six 520/85R46;***,11(75)
 22.5 in (570 mm)
 20375 lb (9242 kg)
 27035 lb(12263 kg)
 47410lb(21505 kg)

DRAWBAR PERFORMANCE AT 1900 RPM **MAXIMUM POWER IN SELECTED GEARS**

Power Hp (kW)	Drawbar pull lbs (kN)	Speed mph (km/h)	Crank- shaft speed rpm	Slip %	Fuel Consumption lb/hp.hr (kg/kW.h)	Consumption Hp.hr/gal (kW.h/l)	Temp.°F(°C) cool- ing med	Air dry bulb	Barom. inch Hg (kPa)
2nd Gear									
368.61 (274.87)	46734 (207.88)	2.96 (4.76)	2126	13.4	0.477 (0.290)	14.78 (2.91)	188 (86)	45 (7)	28.97 (98.10)
3rd Gear									
413.93 (308.67)	42965 (191.12)	3.61 (5.81)	2039	8.6	0.440 (0.267)	16.03 (3.16)	191 (88)	50 (10)	28.97 (98.10)
4th Gear									
440.63 (328.58)	39069 (173.79)	4.23 (6.81)	1935	6.4	0.424 (0.258)	16.62 (3.27)	182 (83)	43 (6)	28.86 (97.73)
5th Gear									
451.73 (336.86)	34950 (155.46)	4.85 (7.81)	1900	4.9	0.417 (0.254)	16.89 (3.33)	179 (82)	43 (6)	28.87 (97.77)
6th Gear									
455.56 (339.71)	31771 (141.32)	5.38 (8.66)	1901	4.0	0.415 (0.252)	16.99 (3.35)	179 (81)	42 (6)	28.86 (97.73)
7th Gear									
455.67 (339.79)	28865 (128.40)	5.92 (9.53)	1901	3.5	0.416 (0.253)	16.96 (3.34)	178 (81)	43 (6)	28.85 (97.70)
8th Gear									
456.22 (340.20)	26179 (116.45)	6.54 (10.52)	1901	3.1	0.413 (0.251)	17.05 (3.36)	178 (81)	43 (6)	28.86 (97.73)
9th Gear									
456.17 (340.17)	23716 (105.49)	7.22 (11.61)	1900	2.8	0.414 (0.252)	17.01 (3.35)	177 (81)	43 (6)	28.87 (97.77)
10th Gear									
454.12 (338.64)	21249 (94.52)	8.02 (12.90)	1915	2.5	0.416 (0.253)	16.93 (3.34)	177 (81)	43 (6)	28.86 (97.73)

HYDRAULIC PERFORMANCE

CATEGORY: IVN

Quick Attach: yes

OECD Static test

Maximum force exerted through whole range: 19620 lbs (87.3 kN)

Three outlet sets combined

	Standard pump	High flow pump
i) Sustained pressure of the open relief valve:	2877 psi (198 bar)	2999 psi (207 bar)
ii) Pump delivery rate at minimum pressure and rated engine speed:	43.8 GPM (165.8 l/min)	61.4 GPM (232.4 l/min)
iii) Pump delivery rate at maximum hydraulic power:	43.3 GPM (163.7 l/min)	58.2 GPM (220.3 l/min)
Delivery pressure:	2526 psi (174 bar)	2609 psi (180 bar)
Power:	63.7 HP (47.5 kW)	88.6 Hp (66.1 kW)

Single outlet set

ii) Pump delivery rate at minimum pressure and rated engine speed:	42.8 GPM (162.2 l/min)	45.8 GPM (173.4 l/min)
iii) Pump delivery rate at maximum hydraulic power:	42.7 GPM (161.6 l/min)	43.3 GPM (163.9 l/min)
Delivery pressure:	2024 psi (139 bar)	2142 psi (148 bar)
Power:	50.4 HP (37.6 kW)	54.1 Hp (40.3 kW)

TwinFlow system

Two outlet sets combined

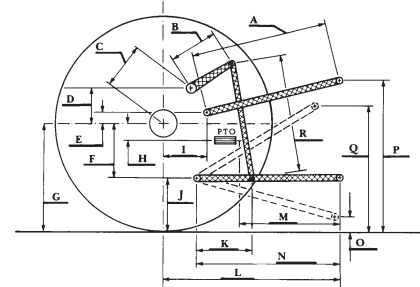
	Standard pump	TwinFlow pump
i) Sustained pressure at compensator cutoff:	2877 psi (198 bar)	2855 psi (197 bar)
ii) Pump delivery rate at minimum pressure and rated engine speed:	43.8 GPM (165.8 l/min)	57.3 GPM (217.0 l/min)
Combined flow:	101.1 GPM (382.8 l/min)	
iii) Pump delivery rate at maximum hydraulic power:	43.3 GPM (163.7 l/min)	56.4 GPM (213.6 l/min)
Delivery pressure:	2526 psi (174 bar)	2479 psi (171 bar)
Power:	63.7 HP (47.5 kW)	81.6 Hp (60.9 kW)

Two outlet sets combined

	High flow pump	TwinFlow pump
i) Sustained pressure at compensator cutoff:	2993 psi (206 bar)	2855 psi (197 bar)
ii) Pump delivery rate at minimum pressure and rated engine speed:	61.0 GPM (230.9 l/min)	57.3 GPM (217.0 l/min)
Combined flow:	118.3 GPM (447.9 l/min)	
iii) Pump delivery rate at maximum hydraulic power:	56.7 GPM (214.7 l/min)	56.4 GPM (213.6 l/min)
Delivery pressure:	2517 psi (174 bar)	2479 psi (171 bar)
Power:	83.3 HP (62.1 kW)	81.6 Hp (60.9 kW)

HITCH DIMENSIONS AS TESTED - NO LOAD

	inch	mm
A	32.6	827
B	29.9	760
C	23.2	590
D	22.0	558
E	13.5	342
F	13.4	340
G	38.2	970
H	6.4	162
I	22.8	578
J	24.8	630
K	29.0	736
L	56.3	1431
*L'	63.6	1615
M	34.3	871
N	46.5	1181
O	7.9	200
P	48.6	1234
Q	42.2	1072
R	39.8	1010



CASE IH STEIGER 500 Diesel

Institute of Agriculture and Natural Resources
University of Nebraska-Lincoln