

University of Nebraska - Lincoln

DigitalCommons@University of Nebraska - Lincoln

Nebraska Tractor Tests

Tractor Test and Power Museum, The Lester F. Larsen

2012

Test 2025: John Deere 5083E LTD

Nebraska Tractor Test Lab

University of Nebraska-Lincoln, tractortestlab@unl.edu

Follow this and additional works at: <https://digitalcommons.unl.edu/tractormuseumlit>



Part of the [Energy Systems Commons](#), [History of Science, Technology, and Medicine Commons](#), [Other Mechanical Engineering Commons](#), [Physical Sciences and Mathematics Commons](#), [Science and Mathematics Education Commons](#), and the [United States History Commons](#)

Nebraska Tractor Test Lab, "Test 2025: John Deere 5083E LTD" (2012). *Nebraska Tractor Tests*. 2444.
<https://digitalcommons.unl.edu/tractormuseumlit/2444>

This Article is brought to you for free and open access by the Tractor Test and Power Museum, The Lester F. Larsen at DigitalCommons@University of Nebraska - Lincoln. It has been accepted for inclusion in Nebraska Tractor Tests by an authorized administrator of DigitalCommons@University of Nebraska - Lincoln.

NEBRASKA TRACTOR TEST 2025
JOHN DEERE 5083E LIMITED DIESEL
12 SPEED
CHASSIS SERIAL NUMBERS 340000 AND HIGHER

POWER TAKE-OFF PERFORMANCE

Power HP (kW)	Crank shaft speed rpm	Gal/hr (l/h)	lb/hp.hr (kg/kW.h)	Hp.hr/gal (kW.h/l)	Mean Atmospheric Conditions
MAXIMUM POWER AND FUEL CONSUMPTION					
Rated Engine Speed—(PTO speed—542 rpm)					
70.33 (52.45)	2394	4.80 (18.16)	0.480 (0.292)	14.66 (2.89)	
Maximum Power - (1 hour)					
75.30 (56.15)	2001	4.38 (16.58)	0.409 (0.249)	17.20 (3.39)	

VARYING POWER AND FUEL CONSUMPTION

70.33 (52.45)	2394	4.80 (18.16)	0.480 (0.292)	14.66 (2.89)	Air temperature
62.20 (46.38)	2504	4.60 (17.41)	0.520 (0.316)	13.52 (2.66)	73°F (23°C)
46.85 (34.94)	2527	3.80 (14.37)	0.570 (0.347)	12.34 (2.43)	Relative humidity
31.40 (23.41)	2546	3.00 (11.35)	0.672 (0.409)	10.47 (2.06)	26%
15.60 (11.63)	2560	2.22 (7.09)	1.002 (0.609)	7.02 (1.38)	Barometer
0.60 (0.45)	2573	1.53 (5.78)	17.908 (10.893)	0.39 (0.08)	28.81"Hg (97.56 kPa)

Maximum Torque 221 lb.-ft. (299 Nm) at 1347 rpm
Maximum Torque Rise - 43.5%
Torque rise at 1899 rpm - 34%
Power increase at 2001 rpm - 7%

TRACTOR SOUND LEVEL WITH CAB

	Front Wheel Drive Engaged dB(A)	Disengaged dB(A)
At no load in 6th (B2) gear	80.3	80.5
Transport in 12th (C4) gear		81.1
Bystander in 12th (C4) gear		82.9

TIRES AND WEIGHT

Rear Tires—No., size, ply & psi (kPa)
Front Tires—No., size, ply & psi (kPa)
Height of Drawbar
Static Weight with operator—Rear
—Front
—Total

Tested Without Ballast

Two 16.9-30; 6; 12 (85)
Two 11.2-24; 6; 16 (110)
17.5 in (445 mm)
4320 lb (1960 kg)
3050 lb (1383 kg)
7370 lb (3343 kg)

Location of tests: Nebraska Tractor Test Laboratory, University of Nebraska, Lincoln Nebraska 68583-0832

Dates of tests: May 8 - 17, 2012

Manufacturer: John Deere Commercial Products Inc., 700 Horizon South Parkway, Grovetown Ga. USA, 30813

FUEL, OIL and TIME: Fuel No. 2 Diesel Specific gravity converted to 60°/60° F (15°/15°C) 0.8448 Fuel weight 7.034 lbs/gal (0.843 kg/l) Oil SAE 15W40 API service classification CF/CH-4 Transmission and hydraulic lubricant John Deere Hy-Gard Fluid Front axle lubricant SAE 80W90 API GL-5 Total time engine was operated 6.0 hours

ENGINE: Make John Deere Diesel Type four cylinder vertical with turbocharger and air to air aftercooler Serial No. *PE4045L806793* Crankshaft lengthwise Rated engine speed 2400 Bore and stroke 4.19" x 5.00" (106.4 mm x 127.0 mm) Compression ratio 19.0 to 1 Displacement 276 cu in (4517 ml) Starting system 12 volt Lubrication pressure Air cleaner one paper element and one polyester felt element Oil filter one full flow cartridge Oil cooler radiator for transmission and hydraulic oil Fuel filter one paper element and sediment bowl Fuel cooler radiator for pump return fuel Muffler underhood Exhaust vertical Cooling medium temperature control one thermostat and variable speed fan

ENGINE OPERATING PARAMETERS: Fuel rate: 32.0 - 34.8 lb/h (14.5 - 15.8 kg/h) High idle: 2575 - 2650 rpm Turbo boost: nominal 8.7 - 11.6 psi (60 - 80 kPa) as measured 10.0 psi (69 kPa)

CHASSIS: Type front wheel assist Serial No. *1LV5083EH CY440318* Tread width rear 55.8" (1417 mm) to 71.7" (1820 mm) front 52.8" (1340 mm) to 75.0" (1904 mm) Wheelbase 85.7" (2178 mm) Hydraulic control system direct engine drive Transmission selective gear fixed ratio Nominal travel speeds mph (km/h) first 1.01 (1.63) second 1.37 (2.21) third 1.88 (3.02) fourth 2.52 (4.05) fifth 2.91 (4.69) sixth 3.96 (6.38) seventh 5.41 (8.71) eighth 7.25 (11.67) ninth 8.43 (13.56) tenth 11.46 (18.45) eleventh 15.65 (25.19) twelfth 20.96 (33.74) reverse 1.10 (1.77), 1.50 (2.42), 2.05 (3.30), 2.75 (4.42), 3.18 (5.12), 4.32 (6.96), 5.90 (9.50), 7.91 (12.73), 9.19 (14.79), 12.51 (20.13), 17.08 (27.48), 22.87 (36.81) Clutch single wet disc operated by foot pedal Brakes single wet disc hydraulically operated by two foot pedals which can be locked together Steering hydrostatic Power take-off 540 rpm at 2385 engine rpm or 540 rpm at 1720 engine rpm Unladen tractor mass 7195 lb (3264 kg)

HYDRAULIC PERFORMANCE

CATEGORY: II

Quick Attach: None

OECD Static test

Maximum force exerted through whole range:	3213 lbs	(14.3 kN)
i) Sustained pressure of the open relief valve:	2920 psi	(201 bar)
ii) Pump delivery rate at minimum pressure and rated engine speed:	17.1 GPM	(64.6 l/min)
iii) Pump delivery rate at maximum hydraulic power:	15.5 GPM	(58.5 l/min)
Delivery pressure:	2542 psi	(175 bar)
Power:	22.9 HP	(17.1 kW)

THREE POINT HITCH PERFORMANCE

Observed maximum pressure psi.(bar)	2830(195)
Location:	remote outlet
Hydraulic oil temperature: °F(°C)	148(64)
Location:	pump inlet
Category:	II
Quick attach:	none

SAE Static Test—System pressure 2520 psi (174 Bar)

Hitch point distance to ground level in.(mm)	8.0(203)	15.0(381)	22.0(559)	29.0(737)	36.0(914)
Lift force on frame lb	4694	4829	4685	4266	3596
" " " " " "(kN)	(20.9)	(21.5)	(20.8)	(19.0)	(16.0)

REPAIRS AND ADJUSTMENTS: No repairs or adjustments

NOTE: The performance figures on this report apply to tractors with chassis serial numbers 340000 and higher.

REMARKS: All test results were determined from observed data obtained in accordance with official OECD, SAE and Nebraska test procedures. For the maximum power tests, the fuel temperature at the injection pump inlet was maintained at 101°F (38°C).

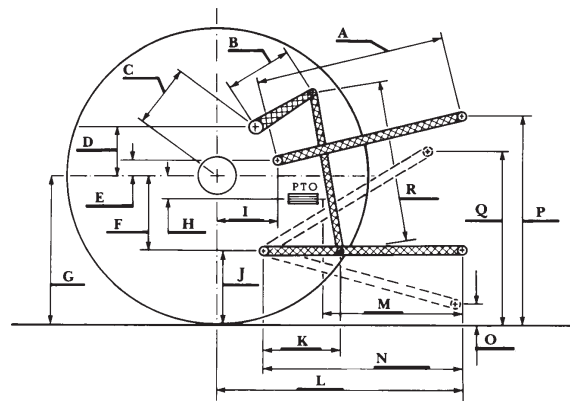
We, the undersigned, certify that this is a true and correct report of official Tractor Test No. **2025**, July 2, 2012.

Roger M. Hoy
Director

M.A. Hanna
P.J. Jasa
J.D. Luck
Board of Tractor Test Engineers

	SAE Test		OECD Test	
	inch	mm	inch	mm
A	23.2	590	24.1	613
B	11.0	280	11.0	280
C	14.0	356	14.0	356
D	12.2	311	12.2	311
E	11.2	284	11.2	284
F	6.5	165	6.5	165
G	27.4	695	27.4	695
H	0.2	4	0.2	4
I	15.1	384	15.1	384
J	20.9	530	20.9	530
K	16.7	424	16.7	424
L	39.2	996	39.2	996
M	22.4	570	22.4	570
N	32.9	836	32.9	836
O	8.0	203	8.0	203
P	40.9	1040	44.9	1140
Q	34.0	864	34.0	864
R	20.8	527	20.8	527

HITCH DIMENSIONS AS TESTED - NO LOAD



Shiftable PTO Performance

Economy mode

540 PTO rpm @ 1720 engine rpm

Power HP (kW)	Crank shaft speed rpm	Gal/hr (l/h)	lb/hp.hr (kg/kW.h)	Hp.hr/gal (kW.h/l)
52.25 (38.96)	1722	3.14 (11.87)	0.422 (0.257)	16.66 (3.28)
38.85 (28.97)	1716	2.38 (9.02)	0.432 (0.263)	16.30 (3.21)
25.90 (19.31)	1725	1.83 (6.92)	0.496 (0.302)	14.18 (2.79)
12.80 (9.54)	1731	1.27 (4.81)	0.698 (0.425)	10.08 (1.99)
0.55 (0.41)	1728	0.77 (2.93)	9.909 (6.032)	0.71 (0.14)

Normal mode

540 PTO rpm @ 2385 engine rpm

Power HP (kW)	Crank shaft speed rpm	Gal/hr (l/h)	lb/hp.hr (kg/kW.h)	Hp.hr/gal (kW.h/l)
52.00 (38.78)	2381	3.81 (14.43)	0.515 (0.314)	13.65 (2.69)
38.85 (28.97)	2377	3.10 (11.72)	0.561 (0.341)	12.54 (2.47)
25.85 (19.28)	2384	2.47 (9.36)	0.673 (0.409)	10.46 (2.06)
12.70 (9.47)	2382	1.84 (6.95)	1.017 (0.619)	6.92 (1.36)
0.50 (0.37)	2378	1.30 (4.94)	18.350 (11.170)	0.38 (0.08)



John Deere 5083E Ltd Diesel

Institute of Agriculture and Natural Resources
University of Nebraska–Lincoln