

University of Nebraska - Lincoln

DigitalCommons@University of Nebraska - Lincoln

Nebraska Tractor Tests

Tractor Test and Power Museum, The Lester F. Larsen

2012

Test 2020A: New Holland T8.360

Nebraska Tractor Test Lab

University of Nebraska-Lincoln, tractortestlab@unl.edu

Follow this and additional works at: <https://digitalcommons.unl.edu/tractormuseumlit>



Part of the [Energy Systems Commons](#), [History of Science, Technology, and Medicine Commons](#), [Other Mechanical Engineering Commons](#), [Physical Sciences and Mathematics Commons](#), [Science and Mathematics Education Commons](#), and the [United States History Commons](#)

Nebraska Tractor Test Lab, "Test 2020A: New Holland T8.360" (2012). *Nebraska Tractor Tests*. 2465.
<https://digitalcommons.unl.edu/tractormuseumlit/2465>

This Article is brought to you for free and open access by the Tractor Test and Power Museum, The Lester F. Larsen at DigitalCommons@University of Nebraska - Lincoln. It has been accepted for inclusion in Nebraska Tractor Tests by an authorized administrator of DigitalCommons@University of Nebraska - Lincoln.

NEBRASKA OECD TRACTOR TEST 2020A—SUMMARY 819A

NEW HOLLAND T8.360 DIESEL

18 SPEED

POWER TAKE-OFF PERFORMANCE

Power HP (kW)	Crank shaft speed rpm	Diesel Consumption Gal/hr (l/h)	lb/hp.hr (kg/kW.h)	Hp.hr/gal (kW.h/l)	D.E.F. Consumption Gal/hr (l/h)	Mean Atmospheric Conditions
MAXIMUM POWER AND FUEL CONSUMPTION						
Rated Engine Speed—(PTO speed—1109 rpm)						
271.45 (202.42)	1999	14.38 (54.44)	0.373 (0.227)	18.87 (3.72)	1.00 (3.78)	
Standard Power Take-off Speed (998 rpm)						
315.72 (235.43)	1800	15.85 (59.99)	0.353 (0.215)	19.92 (3.92)	1.28 (4.86)	
Maximum Power (1 hour)						
315.72 (235.43)	1800	15.85 (59.99)	0.353 (0.215)	19.92 (3.92)	1.28 (4.86)	

VARYING POWER AND FUEL CONSUMPTION

271.45 (202.42)	1999	14.38 (54.44)	0.373 (0.227)	18.87 (3.72)	1.00 (3.78)	Air temperature
241.40 (180.01)	2083	13.16 (49.81)	0.383 (0.233)	18.34 (3.61)	0.87 (3.30)	73°F (23°C)
184.55 (137.62)	2132	10.70 (40.50)	0.408 (0.248)	17.25 (3.40)	0.63 (2.40)	Relative humidity
123.65 (92.21)	2144	7.96 (30.15)	0.453 (0.276)	15.53 (3.06)	0.44 (1.67)	22%
62.70 (46.76)	2180	5.27 (19.96)	0.592 (0.360)	11.89 (2.34)	0.15 (0.58)	Barometer
2.40 (1.79)	2213	2.86 (10.83)	8.383 (5.099)	0.84 (0.17)	0.00 (0.01)	28.88" Hg (97.80 kPa)

Maximum torque - 1060 lb.-ft. (1437 Nm) at 1450 rpm

Maximum torque rise - 48.8%

Torque rise at 1600 engine rpm - 40%

Power increase at 1800 engine rpm - 16.3%

DRAWBAR PERFORMANCE

UNBALLASTED - FRONT DRIVE ENGAGED

FUEL CONSUMPTION CHARACTERISTICS

Power Hp (kW)	Drawbar pull lbs (kN)	Speed mph (km/h)	Crank- shaft speed rpm	Slip %	Fuel Consumption lb/hp.hr (kg/kW.h)	Hp.hr/gal (kW.h/l)	Temp. °F (°C) cool- ing med	Air dry bulb	Barom. inch Hg (kPa)
Maximum Power—8th Gear									
231.39 (172.55)	17193 (76.48)	5.05 (8.12)	1999	3.0	0.439 (0.267)	16.04 (3.16)	192 (89)	54 (12)	28.81 (97.56)
75% of Pull at Maximum Power—8th Gear									
184.01 (137.22)	12907 (57.41)	5.35 (8.61)	2099	2.1	0.466 (0.283)	15.10 (2.97)	189 (87)	61 (16)	28.87 (97.77)
50% of Pull at Maximum Power—8th Gear									
125.90 (93.88)	8619 (38.34)	5.48 (8.81)	2136	1.4	0.527 (0.321)	13.35 (2.63)	183 (84)	60 (16)	28.87 (97.77)
75% of Pull at Reduced Engine Speed—11th Gear									
184.10 (137.28)	12881 (57.30)	5.36 (8.63)	1386	2.1	0.408 (0.248)	17.23 (3.39)	196 (91)	60 (16)	28.87 (97.77)
50% of Pull at Reduced Engine Speed—11th Gear									
125.91 (93.89)	8644 (38.45)	5.46 (8.79)	1403	1.4	0.439 (0.267)	16.03 (3.16)	184 (84)	60 (16)	28.87 (97.77)

Location of tests: Nebraska Tractor Test Laboratory, University of Nebraska, Lincoln, Nebraska 68583-0832

Dates of tests: April 12 -18, 2012

Manufacturer: CNH America LLC, 700 State St. Racine, Wi. 53404 USA

CONSUMABLE Fluids, OIL and TIME: Fuel No. 2 Diesel **Specific gravity converted to 60°/60°F (15°/15°C)** 0.8448 **Fuel weight** 7.034 lbs/gal (0.843 kg/l) **Diesel Exhaust Fluid (DEF)** 30% aqueous urea solution **DEF weight** 9.071 lbs/gal (1.087 kg/l) **Oil SAE 15W40 API service classification** CI-4 **Transmission and hydraulic lubricant** New Holland Ambra Mastertran fluid **Front axle lubricant** SAE 85W-140 API GL-5 **Total time engine was operated:** 19.5 hours

ENGINE: Make F.P.T. Diesel **Type** six cylinder vertical with turbocharger, air to air intercooler and D.E.F. (diesel exhaust fluid) exhaust treatment. **Serial No.** *11H00011756* **Crankshaft** lengthwise **Rated engine speed** 2000 **Bore and stroke** 4.606" x 5.315" (117.0 mm x 135.0 mm) **Compression ratio** 15.9 to 1 **Displacement** 531 cu in (8704 ml) **Starting system** 12 volt **Lubrication** pressure **Air cleaner** two paper elements and aspirator **Oil filter** one full flow cartridge **Oil cooler** engine coolant heat exchanger for crankcase oil, radiator for hydraulic and transmission oil **Fuel filter** two paper elements **Fuel cooler** radiator for pump return fuel **Muffler** vertical **Cooling medium temperature control** thermostat and variable speed fan

ENGINE OPERATING PARAMETERS: Fuel rate: 98.3 - 104.1 lb/h (44.6 - 47.2 kg/h) **High idle:** 2200-2250 rpm **Turbo boost:** nominal 23.2 - 27.6 psi (160 -190 kPa) as measured 25.7 psi (177 kPa)

CHASSIS: Type front wheel assist with duals **SerialNo.** *ZBRD05254* **Tread width** rear 64.0" (1626 mm) to 129.0" (3277 mm) front 60.0" (1524 mm) to 88.0" (2235 mm) **Wheelbase** 136.0" (3455 mm) **Hydraulic control system** direct engine drive **Transmission** selective gear fixed ratio with full range operator controlled powershift **Nominal travel speeds mph (km/h)** first 1.96 (3.15) second 2.24 (3.61) third 2.58 (4.16) fourth 2.96 (4.77) fifth 3.41 (5.48) sixth 3.90 (6.28) seventh 4.55 (7.33) eighth 5.23 (8.41) ninth 6.02 (9.69) tenth 6.91 (11.12) eleventh 7.92 (12.75) twelfth 9.09 (14.63) thirteenth 11.33 (18.23) fourteenth 12.99 (20.91) fifteenth 14.98 (24.11) sixteenth 17.19 (27.66) seventeenth 19.72 (31.73) eighteenth 22.61 (36.39) reverse 2.81 (4.53), 3.23 (5.20), 6.56 (10.55), 7.52 (12.10) **Clutch** multiple wet disc electrohydraulically operated by foot pedal **Brakes** wet disc hydraulically operated by two foot pedals that can be locked together **Steering** hydrostatic **Power take-off** 540 rpm at 1808 engine rpm or 1000 rpm at 1803 engine rpm **Unladen tractor mass** 26500 lb (12020 kg)

DRAWBAR PERFORMANCE
UNBALLASTED - FRONT DRIVE ENGAGED
MAXIMUM POWER IN SELECTED GEARS

Power Hp (kW)	Drawbar pull lbs (kN)	Speed mph (km/h)	Crank- shaft speed rpm	Slip %	Fuel Consumption lb/hp.hr (kg/kW.h)	Temp. °F cool- ing med	Temp. °C Air dry bulb	Barom. inch Hg (kPa)	
5th Gear									
207.29 (154.57)	24551 (109.21)	3.17 (5.09)	2055	9.0	0.473 (0.288)	14.87 (2.93)	191 (88)	49 (9)	28.77 (97.43)
6th Gear									
223.45 (166.62)	22809 (101.46)	3.68 (5.91)	2000	5.5	0.450 (0.274)	15.63 (3.08)	192 (89)	50 (10)	28.78 (97.46)
7th Gear									
230.99 (172.25)	19819 (88.16)	4.37 (7.03)	2000	3.7	0.438 (0.266)	16.08 (3.17)	190 (88)	55 (13)	28.83 (97.63)
8th Gear									
231.39 (172.55)	17193 (76.48)	5.05 (8.12)	1999	3.0	0.439 (0.267)	16.04 (3.16)	192 (89)	54 (12)	28.81 (97.56)
9th Gear									
231.42 (172.57)	14851 (66.06)	5.84 (9.40)	1998	2.5	0.438 (0.266)	16.07 (3.17)	194 (90)	58 (14)	28.84 (97.66)
10th Gear									
228.25 (172.21)	12704 (56.51)	6.74 (10.85)	2001	2.1	0.447 (0.272)	15.74 (3.10)	204 (95)	59 (15)	28.84 (97.66)
11th Gear									
226.28 (168.73)	10961 (48.76)	7.74 (12.46)	2000	1.8	0.445 (0.270)	15.82 (3.12)	196 (91)	59 (15)	28.84 (97.66)
12th Gear									
223.86 (166.93)	9419 (41.90)	8.91 (14.34)	2000	1.6	0.451 (0.274)	15.59 (3.07)	203 (95)	60 (16)	28.85 (97.70)

REPAIRS AND ADJUSTMENTS: No repairs or adjustments.

NOTE: The data on this summary was obtained from testing conducted on the Case IH Magnum 315 Diesel.

REMARKS: All test results were determined from observed data obtained in accordance with official OECD, SAE and Nebraska test procedures. For the maximum power tests the fuel temperature at the primary fuel filter was maintained at 104°F (40°C). The manufacturer's 3 point hitch lift claims of 16550 lbs (7507 kg) with lift cylinders 1 x 95 mm and 1 x 105 mm and 17950 lbs (8142 kg) with 2 x 105 mm lift cylinders, were not verified. The pull in 5th gear was limited to avoid excessive tractor power hop. The performance results on this summary were taken from OECD tests conducted under the Code 2 Test Code Procedure.

We, the undersigned, certify that this is a true and correct report of official Tractor Test No. **2020A**, Nebraska Summary 819A, May 17, 2012.

Roger M. Hoy
Director

M.F. Kocher
P.J. Jasa
J.D. Luck
Board of Tractor Test Engineers

TRACTOR SOUND LEVEL WITH CAB	Front Wheel Drive	
	Engaged dB(A)	Disengaged dB(A)
At no load in 7th gear	66.8	66.6
Bystander in 18th gear		86.0

TIRES, BALLAST AND WEIGHT

Rear Tires -No., size, ply & psi (kPa)	With Ballast	Without Ballast
Ballast - Triples (total)	Six 520/85R42;**,9(60)	Four 520/85R42;**,12(85)
- Cast Iron (total)	2060 lb (934 kg)	None
Front Tires -No., size, ply & psi (kPa)	4320 lb (1960 kg)	None
Ballast - Duals (total)	Four 420/90R30;**,14(95)	Two 420/90R30;**,20(140)
- Cast Iron (total)	1140 lb (517 kg)	None
Height of Drawbar	480 lb (218 kg)	None
Static Weight with operator - Rear	20.5 in (520 mm)	20.0 in (510 mm)
- Front	22235 lb(10086 kg)	16070 lb (7289 kg)
- Total	12440 lb (5642 kg)	10605 lb (4810 kg)
	34675 lb(15728 kg)	26675 lb(12099 kg)

DRAWBAR PERFORMANCE AT 1800 ENGINE RPM
UNBALLASTED - FRONT DRIVE ENGAGED
MAXIMUM POWER IN SELECTED GEARS

Power Hp (kW)	Drawbar pull lbs (kN)	Speed mph (km/h)	Crank- shaft speed rpm	Slip %	Fuel Consumption lb/hp.hr (kg/kW.h)	Consumption Hp.hr/gal (kW.h/l)	Temp.°F (°C) cool- ing med	Air dry bulb	Barom. inch Hg (kPa)
5th Gear									
208.10 (155.18)	24659 (109.69)	3.17 (5.09)	2052	9.0	0.472 (0.287)	14.91 (2.94)	191 (88)	49 (9)	28.77 (97.43)
6th Gear									
229.06 (170.81)	24314 (108.15)	3.54 (5.69)	1965	7.5	0.458 (0.279)	15.35 (3.02)	188 (87)	51 (11)	28.79 (97.49)
7th Gear									
254.55 (189.81)	23442 (104.28)	4.07 (6.55)	1905	5.8	0.426 (0.259)	16.49 (3.25)	192 (89)	56 (13)	28.83 (97.63)
8th Gear									
268.74 (200.40)	22649 (100.75)	4.45 (7.16)	1800	5.1	0.415 (0.252)	16.96 (3.34)	195 (91)	56 (13)	28.83 (97.63)
9th Gear									
272.06 (202.87)	19579 (87.09)	5.21 (8.38)	1801	3.6	0.413 (0.251)	17.02 (3.35)	201 (94)	58 (14)	28.84 (97.66)
10th Gear									
273.27 (203.77)	17020 (75.71)	6.03 (9.70)	1800	2.9	0.408 (0.248)	17.22 (3.39)	206 (97)	58 (14)	28.84 (97.66)
11th Gear									
271.45 (202.42)	14676 (65.28)	6.94 (11.16)	1800	2.4	0.410 (0.250)	17.14 (3.38)	206 (97)	60 (16)	28.84 (97.66)
12th Gear									
268.39 (200.14)	12537 (55.77)	8.03 (12.91)	1808	2.1	0.414 (0.252)	17.00 (3.35)	209 (98)	60 (16)	28.84 (97.66)

DRAWBAR PERFORMANCE AT 1800 ENGINE RPM
BALLASTED - FRONT DRIVE ENGAGED
MAXIMUM POWER IN SELECTED GEARS

Power Hp (kW)	Drawbar pull lbs (kN)	Speed mph (km/h)	Crank- shaft speed rpm	Slip %	Fuel Consumption lb/hp.hr (kg/kW.h)	Fuel Consumption Hp.hr/gal (kW.h/l)	Temp.°F (°C) cool- ing med	Air dry bulb	Barom. inch Hg (kPa)
3rd Gear									
202.89 (151.30)	34657 (154.16)	2.20 (3.53)	1997	14.0	0.500 (0.304)	14.07 (2.77)	202 (94)	66 (19)	28.76 (97.39)
4th Gear									
230.99 (172.25)	32995 (146.77)	2.63 (4.23)	1950	8.2	0.466 (0.283)	15.10 (2.97)	206 (96)	66 (19)	28.76 (97.39)
5th Gear									
249.23 (185.85)	31987 (142.28)	2.92 (4.70)	1872	7.1	0.436 (0.265)	16.15 (3.18)	207 (97)	67 (19)	28.75 (97.36)
6th Gear									
260.81 (194.49)	29770 (132.42)	3.29 (5.29)	1800	5.4	0.426 (0.259)	16.50 (3.25)	213 (100)	68 (20)	28.74 (97.32)
7th Gear									
267.47 (199.45)	25709 (114.36)	3.90 (6.28)	1800	3.6	0.416 (0.253)	16.90 (3.33)	212 (100)	69 (20)	28.74 (97.32)
8th Gear									
270.28 (201.55)	22420 (99.73)	4.52 (7.27)	1800	2.7	0.413 (0.251)	17.02 (3.35)	205 (96)	68 (20)	28.74 (97.32)
9th Gear									
268.27 (200.05)	19178 (85.31)	5.25 (8.44)	1801	2.1	0.417 (0.254)	16.86 (3.32)	212 (100)	69 (21)	28.73 (97.29)
10th Gear									
267.10 (199.17)	16567 (73.69)	6.05 (9.73)	1801	1.7	0.418 (0.254)	16.83 (3.32)	213 (100)	70 (21)	28.73 (97.29)
11th Gear									
266.10 (198.43)	14338 (63.78)	6.96 (11.20)	1801	1.4	0.420 (0.255)	16.75 (3.30)	209 (98)	70 (21)	28.72 (97.26)
12th Gear									
262.09 (195.44)	12249 (54.48)	8.03 (12.91)	1808	1.2	0.426 (0.259)	16.51 (3.25)	215 (102)	70 (21)	28.71 (97.22)

HYDRAULIC PERFORMANCE

CATEGORY: 4N

Quick Attach: Yes

OECD Static test

Maximum force exerted through whole range: 19559 lbs (87.0 kN) (2 x 115 mm cylinders)

Standard pump **High flow pump**
three outlet sets combined

i) Sustained pressure at compensator cutoff:	2994 psi (206 bar)	2899 psi (200 bar)
ii) Pump delivery rate at minimum pressure and rated engine speed:	44.7 GPM (169.1 l/min)	60.0 GPM (226.9 l/min)
iii) Pump delivery rate at maximum hydraulic power:	42.7 GPM (161.6 l/min)	59.7 GPM (226.0 l/min)
Delivery pressure:	2797 psi (193 bar)	2569 psi (177 bar)
Power:	69.7 HP (51.9 kW)	89.5 hp (66.7 kW)
	single outlet set	
i) Sustained pressure at compensator cutoff:	2992 psi (206 bar)	2890 psi (199 bar)
ii) Pump delivery rate at minimum pressure and rated engine speed:	43.9 GPM (166.3 l/min)	44.9 GPM (170.0 l/min)
iii) Pump delivery rate at maximum hydraulic power:	41.5 GPM (156.9 l/min)	38.7 GPM (146.6 l/min)
Delivery pressure:	2329 psi (161 bar)	2170 psi (150 bar)
Power:	56.3 HP (42.0 kW)	49.0 hp (36.6 kW)

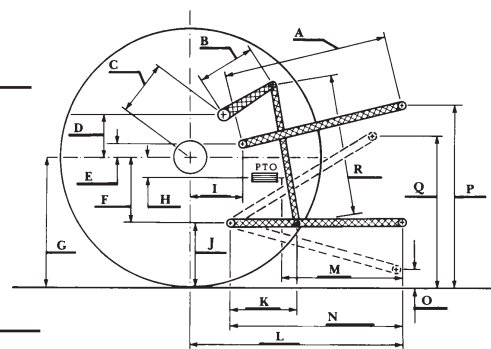
HITCH DIMENSIONS AS TESTED—NO LOAD

	inch	mm
A	24.0	610
B	20.5	520
C	22.9	581
D	20.7	525
E	10.5	266
F	15.7	400
G	36.6	930
H	3.5	90
I	20.9	530
J	20.9	530
K	30.2	768
L	51.0	1295
*L'	58.1	1475
M	25.0	636
N	43.1	1095
O	9.0	230
P	48.4	1230
Q	37.4	951
R	39.6	1005

*L' to Quick Attach ends

MegaFlow system

	Main pump	MegaFlow pump
i) Sustained pressure at compensator cutoff:	3090 psi (213 bar)	2935 psi (202 bar)
ii) Pump delivery rate at minimum pressure and rated engine speed:	43.6 GPM (164.9 l/min)	33.5 GPM (126.7 l/min)
Combined flow:	77.1 GPM (291.6 l/min)	
iii) Pump delivery rate at maximum hydraulic power:	36.3 GPM (137.4 l/min)	34.5 GPM (130.7 l/min)
Delivery pressure:	2797 psi (193 bar)	2764 psi (191 bar)
Power:	59.2 HP (44.1 kW)	55.7 Hp (41.5 kW)



NEW HOLLAND T8.360 DIESEL