

University of Nebraska - Lincoln

DigitalCommons@University of Nebraska - Lincoln

Nebraska Tractor Tests

Tractor Test and Power Museum, The Lester F. Larsen

2014

Test 2103: John Deere 8345RT

Nebraska Tractor Test Lab

University of Nebraska-Lincoln, tractortestlab@unl.edu

Follow this and additional works at: <https://digitalcommons.unl.edu/tractormuseumlit>



Part of the [Energy Systems Commons](#), [History of Science, Technology, and Medicine Commons](#), [Other Mechanical Engineering Commons](#), [Physical Sciences and Mathematics Commons](#), [Science and Mathematics Education Commons](#), and the [United States History Commons](#)

Nebraska Tractor Test Lab, "Test 2103: John Deere 8345RT" (2014). *Nebraska Tractor Tests*. 2529.
<https://digitalcommons.unl.edu/tractormuseumlit/2529>

This Article is brought to you for free and open access by the Tractor Test and Power Museum, The Lester F. Larsen at DigitalCommons@University of Nebraska - Lincoln. It has been accepted for inclusion in Nebraska Tractor Tests by an authorized administrator of DigitalCommons@University of Nebraska - Lincoln.

NEBRASKA OECD TRACTOR TEST 2103—SUMMARY 968

JOHN DEERE 8345RT DIESEL

INFINITELY VARIABLE TRANSMISSION

Chassis Serial numbers 912001 and higher

POWER TAKE-OFF PERFORMANCE

Power HP (kW)	Crank shaft speed rpm	Diesel Consumption Gal/hr (l/h)	lb/hp.hr (kg/kW.h)	Hp.hr/gal (kW.h/l)	D.E.F. Consumption Gal/hr (l/h)	Mean Atmospheric Conditions
MAXIMUM POWER AND FUEL CONSUMPTION						
Rated Engine Speed—(PTO speed—1050 rpm)						
292.81 (218.35)	2100	16.27 (61.58)	0.391 (0.238)	18.00 (3.55)	0.38 (1.43)	Fuel used during active exhaust regeneration-1.02 gal (3.84 l) (see note 1, p.2)
Standard Power Take-off Speed(1000 rpm)						
317.77 (236.96)	2001	17.37 (65.76)	0.385 (0.234)	18.29 (3.60)	0.42 (1.61)	
Maximum Power (1 hour)						
329.11 (245.41)	1750	17.52 (66.31)	0.375 (0.228)	18.79 (3.70)	0.50 (1.89)	

VARYING POWER AND FUEL CONSUMPTION

292.81 (218.35)	2100	16.27 (61.58)	0.391 (0.238)	18.00 (3.55)	0.38 (1.43)	Air temperature
255.36 (190.42)	2154	14.51 (54.94)	0.400 (0.243)	17.60 (3.47)	0.35 (1.33)	73°F (23°C)
192.18 (143.31)	2164	11.63 (44.04)	0.426 (0.259)	16.52 (3.25)	0.28 (1.04)	Relative humidity
128.85 (96.09)	2175	8.86 (33.53)	0.484 (0.294)	14.55 (2.87)	0.23 (0.87)	20%
64.68 (48.23)	2184	6.49 (24.58)	0.706 (0.430)	9.96 (1.96)	0.14 (0.54)	Barometer
4.46 (3.32)	2194	4.19 (15.88)	6.620 (4.027)	1.06 (0.21)	0.13 (0.49)	28.85" Hg (97.70 kPa)

Maximum Torque - 1073 lb.-ft. (1455 Nm) at 1500 rpm

Maximum Torque Rise - 46.6%

Torque rise at 1680 engine rpm - 40%

Power increase at 1750 rpm - 12.4%

DRAWBAR PERFORMANCE

FUEL CONSUMPTION CHARACTERISTICS

Power Hp (kW)	Drawbar pull lbs (kN)	Speed mph (km/h)	Crank- shaft speed rpm	Slip %	Fuel Consumption lb/hp.hr (kg/kW.h)	Hp.hr/gal (kW.h/l)	D.E.F. Consumption lb/hp.hr (kg/kW.h)	Temp. °F(°C) cool- ing med	Air dry bulb	Barom. inch Hg (kPa)
Maximum Power—4.7 mph (7.6 km/h)-Manual mode										
257.69 (192.16)	21435 (95.35)	4.51 (7.26)	2100	2.2	0.443 (0.270)	15.88 (3.13)	0.013 (0.008)	216 (102)	62 (17)	28.86 (97.73)
75% of Pull at Maximum Power—4.7 mph (7.6 km/h)-Manual mode										
199.86 (149.04)	16051 (71.40)	4.67 (7.52)	2159	1.5	0.464 (0.282)	15.17 (2.99)	0.013 (0.008)	201 (94)	60 (15)	28.57 (96.75)
50% of Pull at Maximum Power—4.7 mph (7.6 km/h)-Manual mode										
135.27 (100.87)	10716 (47.66)	4.73 (7.61)	2171	0.8	0.521 (0.317)	13.50 (2.66)	0.014 (0.008)	192 (89)	67 (20)	28.53 (96.61)
75% of Pull at Reduced Engine Speed—Auto mode										
200.23 (149.31)	16138 (71.79)	4.66 (7.49)	1702	1.5	0.427 (0.260)	16.47 (3.24)	0.013 (0.008)	212 (100)	60 (16)	28.57 (96.75)
50% of Pull at Reduced Engine Speed—Auto mode										
135.03 (100.69)	10799 (48.04)	4.69 (7.55)	1363	0.9	0.445 (0.271)	15.81 (3.11)	0.014 (0.009)	205 (96)	67 (20)	28.53 (96.61)

Location of tests: Nebraska Tractor Test Laboratory, University of Nebraska, Lincoln, Nebraska 68583-0832

Dates of tests: October 28 to November 6, 2014

Manufacturer: John Deere Tractor Works, 3500 East Donald St., P.O. Box 270, Waterloo Ia, 50704-0270

CONSUMABLE Fluids, OIL and TIME: Fuel No. 2 Diesel **Specific gravity converted to 60°/60°F (15°/15°C)** 0.8450 **Fuel weight** 7.036 lbs/gal (0.843 kg/l) **Diesel Exhaust Fluid (DEF)** 32% aqueous urea solution **DEF weight** 9.071 lbs/gal (1.087 kg/l) **Oil SAE 10W-30 API service classification CJ-4** **Transmission and hydraulic lubricant** John Deere Hy-Gard fluid **Total time engine was operated:** 33.5 hours

ENGINE: Make John Deere **Diesel Type** six cylinder vertical with two turbochargers and air to air aftercooler and D.E.F (diesel exhaust fluid) exhaust treatment **Serial No.** *RG6090RU006435* **Crankshaft** lengthwise **Rated engine speed** 2100 **Bore and stroke** 4.661" x 5.354" (118.4 mm x 136.0 mm) **Compression ratio** 16.0 to 1 **Displacement** 548 cu in (8984 ml) **Starting system** 12 volt **Lubrication** pressure **Air cleaner** two paper elements and aspirator **Oil filter** one full flow cartridge **Oil cooler** engine coolant heat exchanger for crankcase oil, radiator for hydraulic and transmission oil **Fuel filter** one paper element and water separator **Fuel cooler** radiator for pump return fuel **Exhaust** DOC (diesel oxidation catalyst), SCR (selective catalyst reduction) and regenerative DPF (diesel particulate filter) integrated within a vertical muffler **Cooling medium temperature control** thermostat and variable speed fan

ENGINE OPERATING PARAMETERS: Fuel rate: 109.6 - 118.8 lb/h (49.7 - 53.9 kg/h) **High idle:** 2190 - 2210 rpm **Turbo boost:** nominal 23.2 - 26.1 psi (160 - 180 kPa) as measured 24.7 psi (170 kPa)

CHASSIS: Type tracklayer-rubber tracked **Serial No.** *1RW8345RKED913243* **Track width** 76.0" (1930 mm) to 120.0" (3048 mm) **Length of track on ground** 99.0" (2515 mm) **Hydraulic control system** direct engine drive **Transmission** Infinitely variable with four mechanical ranges and automatic shifting between ranges. **Nominal travel speeds mph (km/h)** forward - 0 - 26.1 mph, (0 - 42 km/h) reverse - 0 - 11.8 mph (0 - 19 km/h) **Clutch** a foot pedal controls the hydrostatic oil flow **Brakes** wet multiple disc hydraulically actuated by foot pedal **Steering** electro-hydraulic differential steering controlled by steering wheel **Power take-off** 1000 rpm at 2000 engine rpm **Unladen tractor mass** 36225 lb (16431 kg)

DRAWBAR PERFORMANCE

MANUAL MODE - 2100 ENGINE RPM DRAWBAR POWER AT SELECTED TRAVEL SPEED SETTINGS

Power Hp (kW)	Drawbar pull lbs (kN)	Speed mph (km/h)	Crank- shaft speed rpm	Slip %	Fuel Consumption lb/hp.hr (kg/kW.h)	Hp.hr/gal (kW/h/l)	D.E.F Consumption lb/hp.hr (kg/kW.h)	Temp.°F(°C) cool- ing med	Air dry bulb	Barom. inch Hg (kPa)
2.7 mph (4.4 km/h)										
211.27 (157.54)	33816 (150.42)	2.35 (3.77)	2130	13.7	0.525 (0.319)	13.41 (2.64)	0.014 (0.008)	194 (90)	43 (6)	28.92 (97.93)
3.1 mph (5.0 km/h)										
227.69 (169.78)	31564 (140.40)	2.71 (4.35)	2106	11.2	0.499 (0.303)	14.10 (2.78)	0.014 (0.009)	204 (95)	49 (9)	28.92 (97.93)
3.5 mph (5.6 km/h)										
241.18 (179.84)	28814 (128.17)	3.14 (5.05)	2100	7.7	0.474 (0.289)	14.83 (2.92)	0.014 (0.008)	210 (99)	50 (10)	28.92 (97.93)
3.9 mph (6.2 km/h)										
248.72 (185.47)	26152 (116.33)	3.57 (5.74)	2100	5.2	0.460 (0.280)	15.30 (3.01)	0.013 (0.008)	214 (101)	57 (14)	28.90 (97.87)
4.3 mph (7.0 km/h)										
256.22 (191.06)	23275 (103.53)	4.13 (6.65)	2100	2.9	0.447 (0.272)	15.76 (3.10)	0.012 (0.007)	217 (103)	67 (20)	28.52 (96.58)
4.7 mph (7.6 km/h)										
257.69 (192.16)	21435 (95.35)	4.51 (7.26)	2100	2.2	0.443 (0.270)	15.88 (3.13)	0.013 (0.008)	216 (102)	62 (17)	28.86 (97.73)
5.1 mph (8.2 km/h)										
256.60 (191.34)	19698 (87.62)	4.89 (7.86)	2100	1.9	0.446 (0.271)	15.78 (3.11)	0.014 (0.008)	216 (102)	63 (17)	28.84 (97.66)
5.6 mph (9.0 km/h)										
254.79 (189.99)	17764 (79.02)	5.38 (8.66)	2100	1.6	0.447 (0.272)	15.74 (3.10)	0.014 (0.009)	216 (102)	63 (17)	28.84 (97.66)
6.2 mph (10.0 km/h)										
256.42 (191.21)	16064 (71.45)	5.99 (9.63)	2100	1.4	0.445 (0.270)	15.83 (3.12)	0.013 (0.008)	215 (102)	56 (14)	28.56 (96.72)
6.8 mph (11.0 km/h)										
253.61 (189.11)	14416 (64.12)	6.60 (10.62)	2100	1.2	0.449 (0.273)	15.67 (3.09)	0.012 (0.007)	214 (101)	62 (17)	28.56 (96.72)
7.5 mph (12.0 km/h)										
251.00 (187.17)	13042 (58.01)	7.22 (11.62)	2100	0.9	0.453 (0.275)	15.55 (3.06)	0.013 (0.008)	216 (102)	65 (18)	28.56 (96.72)
8.1 mph (13.0 km/h)										
248.78 (185.52)	11931 (53.07)	7.82 (12.59)	2100	0.8	0.457 (0.278)	15.41 (3.04)	0.013 (0.008)	216 (102)	67 (19)	28.55 (96.68)
8.7 mph (14.0 km/h)										
245.94 (183.39)	10938 (48.65)	8.43 (13.57)	2100	0.7	0.464 (0.282)	15.18 (2.99)	0.013 (0.008)	217 (103)	68 (20)	28.53 (96.61)

TRACTOR SOUND LEVEL WITH CAB	dB(A)
At no load at 4.7 mph (7.6 km/h) engine speed - 2190 rpm	68.7
At no load at 4.7 mph (7.6 km/h) Auto mode - engine speed - 1200 rpm	62.3
At no load at 4.7 mph (7.6 km/h) Custom mode - engine speed - 900 rpm	60.1
Transport speed - no load - manual mode	71.2
Transport speed - no load - Full Auto mode	70.8
Transport speed - no load - Custom Auto mode	70.5
Bystander	86.5

TIRES AND WEIGHT

Track width
Height of Drawbar
Static Weight with operator

Tested Without Ballast

25.0 in (635 mm)
18.5 in (470 mm)
36400 lb (16510 kg)

REPAIRS AND ADJUSTMENTS: No repairs of adjustments.

NOTE 1: The manufacturer declares that the average time between active regenerations is 50 hours, while operated in Auto Filter Cleaning Mode, at rated speed, full load, under steady state conditions.

NOTE 2: The performance data on this report applies to tractors with chassis serial numbers that end with 912001 and higher.

NOTE 3: Custom mode settings are as follows: ECO on, ECO on minimum engine speed=900 rpm, PTO off Droop = 26%.

REMARKS: All test results were determined from observed data obtained in accordance with official OECD, SAE and Nebraska test procedures. The manufacturer's remote hydraulic flow claim of 40.5 gpm (153 l/min), with 3/4" couplers, was not verified. For the maximum power tests the fuel temperature at the injection pump inlet was maintained at 117°F (47°C). The performance figures on this summary were taken from a test conducted under the OECD Code 2 test procedure.

We, the undersigned, certify that this is a true and correct report of official Tractor Test No. **2103**, Nebraska Summary 968, December 19, 2014.

Roger M. Hoy
Director

M.F. Kocher
P.J. Jasa
J.D. Luck
Board of Tractor Test Engineers

DRAWBAR PERFORMANCE - AUTO MODE
(Loads based on 2100 engine rpm manual mode performance runs)
DRAWBAR POWER AT SELECTED TRAVEL SPEED SETTINGS

Power Hp (kW)	Drawbar pull lbs (kN)	Speed mph (km/h)	Crank- shaft speed rpm	Slip %	Fuel Consumption lb/hp.hr (kg/kW.h)	Consumption Hp.hr/gal (kW.h/l)	D.E.F Consumption lb/hp.hr (kg/kW.h)	Temp.°F(°C) cool- ing med	Air dry bulb	Barom. inch Hg (kPa)
2.7 mph (4.4 km/h)										
209.09 (155.92)	33050 (147.01)	2.37 (3.81)	1870	13.3	0.494 (0.300)	14.25 (2.81)	0.016 (0.010)	201 (94)	45 (7)	28.93 (97.97)
3.1 mph (5.0 km/h)										
225.52 (168.17)	31702 (141.02)	2.67 (4.30)	1916	10.6	0.477 (0.290)	14.76 (2.91)	0.016 (0.010)	211 (99)	50 (10)	28.92 (97.93)
3.4 mph (5.4 km/h)										
239.47 (178.57)	29059 (129.26)	3.09 (4.97)	1968	8.0	0.462 (0.281)	15.24 (3.00)	0.014 (0.009)	212 (100)	52 (11)	28.92 (97.93)
3.7 mph (6.0 km/h)										
248.03 (184.95)	26261 (116.81)	3.55 (5.71)	1976	5.1	0.448 (0.273)	15.69 (3.09)	0.014 (0.008)	215 (102)	58 (14)	28.90 (97.87)
4.2 mph (6.8 km/h)										
255.77 (190.72)	23238 (103.37)	4.13 (6.64)	1981	2.8	0.437 (0.266)	16.09 (3.17)	0.013 (0.008)	216 (102)	67 (20)	28.52 (96.58)
4.6 mph (7.4 km/h)										
257.88 (192.30)	21522 (95.73)	4.49 (7.23)	1986	2.3	0.436 (0.265)	16.15 (3.18)	0.014 (0.009)	216 (102)	62 (16)	28.87 (97.77)
5.0 mph (8.0 km/h)										
256.42 (191.21)	19708 (87.66)	4.88 (7.85)	1988	1.9	0.436 (0.265)	16.14 (3.18)	0.014 (0.008)	216 (102)	63 (17)	28.85 (97.70)
5.5 mph (8.8 km/h)										
254.93 (190.10)	17749 (78.95)	5.39 (8.67)	2000	1.5	0.439 (0.267)	16.04 (3.16)	0.014 (0.009)	216 (102)	63 (17)	28.84 (97.66)
6.1 mph (9.8 km/h)										
256.08 (190.96)	15984 (71.10)	6.01 (9.67)	2000	1.3	0.439 (0.267)	16.04 (3.16)	0.013 (0.008)	215 (102)	56 (14)	28.56 (96.72)
6.7 mph (10.8 km/h)										
253.61 (189.11)	14333 (63.75)	6.64 (10.69)	2000	1.1	0.441 (0.268)	15.95 (3.14)	0.013 (0.008)	215 (102)	62 (17)	28.57 (96.75)
7.3 mph (11.8 km/h)										
251.53 (187.56)	12985 (57.76)	7.26 (11.68)	2000	0.9	0.445 (0.271)	15.80 (3.11)	0.013 (0.008)	216 (102)	65 (18)	28.55 (96.68)
8.0 mph (12.8 km/h)										
248.48 (185.29)	11814 (52.55)	7.89 (12.70)	2000	0.8	0.450 (0.274)	15.62 (3.08)	0.014 (0.008)	216 (102)	67 (19)	28.54 (96.65)
8.6 mph (13.8 km/h)										
245.80 (183.29)	10829 (48.17)	8.51 (13.70)	1983	0.7	0.452 (0.275)	15.58 (3.07)	0.014 (0.008)	216 (102)	68 (20)	28.52 (96.58)

DRAWBAR PERFORMANCE
CUSTOM MODE (See p.2, Note 3 for settings used)
FUEL CONSUMPTION CHARACTERISTICS

Power Hp (kW)	Drawbar pull lbs (kN)	Speed mph (km/h)	Crank- shaft speed rpm	Slip %	Fuel Consumption lb/hp.hr (kg/kW.h)	Hp.hr/gal (kW.h/l)	D.E.F Consumption lb/hp.hr (kg/kW.h)	Temp.°F(°C) cool- ing med	Air dry bulb	Barom. inch Hg (kPa)
Maximum Power—4.7 mph (7.6 km/h)										
256.29 (191.12)	20863 (92.80)	4.61 (7.42)	1624	2.2	0.420 (0.256)	16.74 (3.30)	0.012 (0.008)	215 (102)	61 (16)	28.88 (97.80)
75% of Pull at Maximum Power—4.7 mph (7.6 km/h)										
197.81 (147.51)	16205 (72.08)	4.58 (7.37)	1345	1.9	0.425 (0.258)	16.57 (3.26)	0.013 (0.008)	211 (99)	61 (16)	28.57 (96.75)
50% of Pull at Maximum Power—4.7 mph (7.6 km/h)										
135.12 (100.76)	10823 (48.14)	4.68 (7.53)	1132	0.7	0.444 (0.270)	15.85 (3.12)	0.026 (0.016)	208 (98)	67 (20)	28.53 (96.61)

POWER AT SELECTED TRAVEL SPEED SETTINGS - CUSTOM MODE
(Loads based on 2100 engine rpm manual mode performance runs)

Power Hp (kW)	Drawbar pull lbs (kN)	Speed mph (km/h)	Crank- shaft speed rpm	Slip %	Fuel Consumption lb/hp.hr (kg/kW.h)	Hp.hr/gal (kW.h/l)	D.E.F Consumption lb/hp.hr (kg/kW.h)	Temp.°F(°C) cool- ing med	Air dry bulb	Barom. inch Hg (kPa)
3.4 mph (5.4 km/h)										
239.35 (178.48)	28911 (128.60)	3.11 (5.00)	1654	7.5	0.445 (0.270)	15.82 (3.12)	0.016 (0.009)	213 (100)	53 (12)	28.92 (97.93)
3.9 mph (6.2 km/h)										
249.17 (185.80)	26379 (117.34)	3.55 (5.71)	1658	5.0	0.434 (0.264)	16.23 (3.20)	0.015 (0.009)	214 (101)	59 (15)	28.90 (97.87)
4.4 mph (7.0 km/h)										
253.71 (189.19)	22979 (102.21)	4.14 (6.66)	1602	2.9	0.422 (0.257)	16.68 (3.29)	0.004 (0.003)	215 (102)	67 (20)	28.53 (96.61)
4.7 mph (7.6 km/h)										
256.29 (191.12)	20863 (92.80)	4.61 (7.42)	1624	2.2	0.420 (0.256)	16.74 (3.30)	0.012 (0.008)	215 (102)	61 (16)	28.88 (97.80)
5.1 mph (8.2 km/h)										
257.12 (191.73)	19487 (86.68)	4.95 (7.97)	1624	1.9	0.422 (0.257)	16.66 (3.28)	0.010 (0.006)	215 (102)	62 (17)	28.86 (97.73)
5.5 mph (8.8 km/h)										
254.92 (190.09)	17758 (78.99)	5.38 (8.66)	1627	1.5	0.425 (0.259)	16.55 (3.26)	0.014 (0.009)	215 (102)	63 (17)	28.84 (97.66)
6.2 mph (10.0 km/h)										
255.95 (190.86)	15670 (69.70)	6.13 (9.86)	1668	1.3	0.425 (0.258)	16.57 (3.26)	0.014 (0.008)	215 (101)	56 (14)	28.58 (96.78)
6.8 mph (11.0 km/h)										
252.94 (188.61)	14029 (62.40)	6.76 (10.88)	1669	1.1	0.428 (0.261)	16.43 (3.24)	0.015 (0.009)	215 (102)	63 (17)	28.56 (96.72)
7.5 mph (12.0 km/h)										
251.80 (187.76)	12832 (57.08)	7.36 (11.84)	1624	0.9	0.430 (0.262)	16.35 (3.22)	0.014 (0.009)	215 (102)	66 (19)	28.55 (96.68)
8.0 mph (12.8 km/h)										
248.13 (185.03)	11814 (52.55)	7.88 (12.67)	1687	0.8	0.433 (0.264)	16.24 (3.20)	0.015 (0.009)	215 (102)	67 (20)	28.54 (96.65)
8.7 mph (14.0 km/h)										
245.91 (183.37)	10941 (48.67)	8.43 (13.57)	1674	0.7	0.455 (0.277)	15.48 (3.05)	0.015 (0.009)	216 (102)	67 (20)	28.53 (96.61)

DRAWBAR PERFORMANCE
MANUAL MODE - 1750 ENGINE RPM
MAXIMUM POWER AT SELECTED TRAVEL SPEED SETTINGS

Power Hp (kW)	Drawbar pull lbs (kN)	Speed mph (km/h)	Crank- shaft speed rpm	Slip %	Fuel Consumption lb/hp.hr (kg/kW.h)	Hp.hr/gal (kW.h/l)	D.E.F Consumption lb/hp.hr (kg/kW.h)	Temp. °F(°C) cool- ing med	Air dry bulb	Barom. inch Hg (kPa)
2.7 mph (4.4 km/h)										
211.83 (157.96)	34021 (151.33)	2.34 (3.76)	2131	14.0	0.526 (0.320)	13.38 (2.64)	0.014 (0.009)	195 (91)	43 (6)	28.92 (97.93)
3.1 mph (5.0 km/h)										
228.20 (170.17)	31548 (140.33)	2.72 (4.37)	2106	10.9	0.498 (0.303)	14.14 (2.79)	0.014 (0.009)	202 (94)	47 (8)	28.93 (97.97)
3.5 mph (5.6 km/h)										
246.59 (183.88)	30426 (135.34)	3.04 (4.89)	2055	8.7	0.476 (0.289)	14.79 (2.91)	0.013 (0.008)	213 (100)	55 (13)	28.91 (97.90)
3.9 mph (6.2 km/h)										
262.51 (195.75)	29768 (132.41)	3.31 (5.33)	1995	7.5	0.465 (0.283)	15.13 (2.98)	0.014 (0.008)	216 (102)	55 (13)	28.91 (97.90)
4.3 mph (7.0 km/h)										
275.00 (205.07)	28151 (125.22)	3.67 (5.90)	1919	5.6	0.448 (0.272)	15.72 (3.10)	0.014 (0.008)	216 (102)	60 (15)	28.87 (97.77)
4.7 mph (7.6 km/h)										
280.78 (209.38)	27120 (120.64)	3.89 (6.25)	1864	5.2	0.439 (0.267)	16.03 (3.16)	0.015 (0.009)	217 (103)	60 (16)	28.87 (97.77)
5.1 mph (8.2 km/h)										
282.10 (210.36)	26136 (116.26)	4.05 (6.52)	1789	4.6	0.436 (0.265)	16.15 (3.18)	0.015 (0.009)	217 (103)	60 (16)	28.86 (97.73)
5.6 mph (9.0 km/h)										
285.29 (212.74)	24420 (108.63)	4.39 (7.06)	1750	3.8	0.434 (0.264)	16.21 (3.19)	0.014 (0.009)	216 (102)	56 (14)	28.60 (96.85)
6.2 mph (10.0 km/h)										
287.38 (214.30)	21964 (97.70)	4.91 (7.90)	1750	3.0	0.431 (0.262)	16.33 (3.22)	0.013 (0.008)	216 (102)	56 (14)	28.59 (96.82)
6.8 mph (11.0 km/h)										
288.09 (214.82)	19824 (88.18)	5.45 (8.77)	1750	2.1	0.428 (0.260)	16.44 (3.24)	0.014 (0.009)	216 (102)	63 (17)	28.56 (96.72)
7.5 mph (12.0 km/h)										
287.80 (214.61)	18078 (80.41)	5.97 (9.61)	1750	1.7	0.428 (0.260)	16.46 (3.24)	0.014 (0.009)	216 (102)	63 (17)	28.57 (96.73)
8.1 mph (13.0 km/h)										
287.03 (214.04)	16599 (73.83)	6.49 (10.44)	1750	1.3	0.430 (0.262)	16.35 (3.22)	0.014 (0.008)	217 (103)	68 (20)	28.55 (96.68)
8.7 mph (14.0 km/h)										
285.89 (213.19)	15322 (68.16)	7.00 (11.27)	1750	1.1	0.431 (0.262)	16.31 (3.21)	0.014 (0.008)	217 (103)	67 (20)	28.54 (96.63)
9.3 mph (15.0 km/h)										
284.77 (212.35)	14224 (63.27)	7.51 (12.09)	1750	1.0	0.433 (0.263)	16.24 (3.20)	0.014 (0.009)	217 (103)	67 (20)	28.54 (96.63)
9.9 mph (16.0 km/h)										
284.07 (211.83)	13294 (59.13)	8.02 (12.90)	1750	0.9	0.434 (0.264)	16.21 (3.19)	0.014 (0.009)	217 (103)	67 (20)	28.53 (96.61)

HYDRAULIC PERFORMANCE

CATEGORY: IVN

Quick Attach: yes

OECD Static test

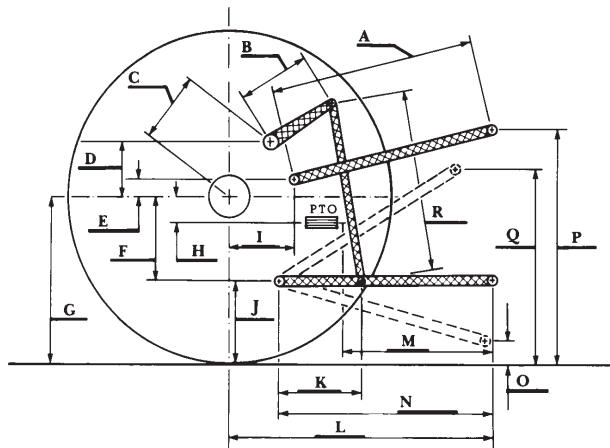
Maximum force exerted through whole range: 22144 lbs (98.5 kN) (lift cylinders - 2x115 mm)
16520 lbs (73.5 kN) (lift cylinders - 2x100 mm)

i) Sustained pressure at compensator cutoff:	85 cc pump
	2903 psi (200 bar)
	three outlet sets combined
ii) Pump delivery rate at minimum pressure and rated engine speed:	61.5 GPM (232.9 l/min)
iii) Pump delivery rate at maximum hydraulic power:	61.5 GPM (233.0 l/min)
Delivery pressure:	2460 psi (170 bar)
Power:	88.3 HP (65.9 kW)
ii) Pump delivery rate at minimum pressure and rated engine speed:	single outlet set- 1/2" coupler
	36.5 GPM (138.0 l/min)
iii) Pump delivery rate at maximum hydraulic power:	34.8 GPM (131.9 l/min)
Delivery pressure:	2219 psi (153 bar)
Power:	45.1 HP (33.6 kW)

HITCH DIMENSIONS AS TESTED - NO LOAD

	inch	mm
A	28.3	720
B	20.5	520
C	24.8	631
D	24.2	615
E	15.5	394
F	11.5	292
G	34.5	875
H	3.1	80
I	18.5	470
J	23.0	583
K	39.8	1011
L	53.6	1361
*L'	59.5	1511
M	30.6	777
N	45.7	1161
O	9.0	230
P	50.0	1270
Q	40.6	1030
R	44.3	1124

*L' to Quick Attach ends



JOHN DEERE 8345RT DIESEL