

University of Nebraska - Lincoln

DigitalCommons@University of Nebraska - Lincoln

Nebraska Tractor Tests

Tractor Test and Power Museum, The Lester F. Larsen

2015

Test 2116: John Deere 5100M

Nebraska Tractor Test Lab

University of Nebraska-Lincoln, tractortestlab@unl.edu

Follow this and additional works at: <https://digitalcommons.unl.edu/tractormuseumlit>



Part of the [Energy Systems Commons](#), [History of Science, Technology, and Medicine Commons](#), [Other Mechanical Engineering Commons](#), [Physical Sciences and Mathematics Commons](#), [Science and Mathematics Education Commons](#), and the [United States History Commons](#)

Nebraska Tractor Test Lab, "Test 2116: John Deere 5100M" (2015). *Nebraska Tractor Tests*. 2538.
<https://digitalcommons.unl.edu/tractormuseumlit/2538>

This Article is brought to you for free and open access by the Tractor Test and Power Museum, The Lester F. Larsen at DigitalCommons@University of Nebraska - Lincoln. It has been accepted for inclusion in Nebraska Tractor Tests by an authorized administrator of DigitalCommons@University of Nebraska - Lincoln.

NEBRASKA TRACTOR TEST 2116

JOHN DEERE 5100M DIESEL

16 SPEED

Chassis Serial numbers 700000 and higher

POWER TAKE-OFF PERFORMANCE

Power HP (kW)	Crank shaft speed rpm	Diesel Consumption Gal/hr (l/h)	lb/hp.hr (kg/kW.h)	Hp.hr/gal (kW.h/l)	D.E.F. Consumption Gal/hr (l/h)	Mean Atmospheric Conditions
MAXIMUM POWER AND FUEL CONSUMPTION						
Rated Engine Speed—(PTO speed—565 rpm)						
87.25 (65.06)	2197	5.36 (20.31)	0.432 (0.263)	16.26 (3.20)	0.22 (0.83)	Fuel used during active exhaust regeneration-0.71 gal (2.69 l) (see note 1, p.2)
Standard Power Take-off Speed (540 rpm)						
87.40 (65.18)	2100	5.20 (19.67)	0.418 (0.254)	16.82 (3.31)	0.22 (0.84)	
Maximum Power (1 hour)						
87.40 (65.18)	2100	5.20 (19.67)	0.418 (0.254)	16.82 (3.31)	0.22 (0.84)	

VARYING POWER AND FUEL CONSUMPTION

87.25 (65.06)	2197	5.36 (20.31)	0.432 (0.263)	16.26 (3.20)	0.22 (0.83)	Air temperature
75.79 (56.52)	2246	4.92 (18.61)	0.456 (0.278)	15.41 (3.04)	0.20 (0.75)	74°F (23°C)
57.63 (42.97)	2275	4.10 (15.51)	0.500 (0.304)	14.06 (2.77)	0.17 (0.66)	Relative humidity
38.88 (28.99)	2300	3.34 (12.64)	0.604 (0.367)	11.65 (2.29)	0.15 (0.55)	24%
19.40 (14.47)	2300	2.50 (9.45)	0.905 (0.550)	7.77 (1.53)	0.13 (0.50)	Barometer
0.75 (0.56)	2300	1.90 (7.20)	17.809 (10.833)	0.39 (0.08)	0.16 (0.61)	28.75" Hg (97.36 kPa)

Maximum torque - 264 lb.-ft. (358 Nm) at 1401 rpm

Maximum torque rise - 27.1%

Torque rise at 1750 engine rpm - 20%

Power increase at 2100 engine rpm - 0.1%

TRACTOR SOUND LEVEL WITH CAB	Front Wheel Drive	
	Engaged dB(A)	Disengaged dB(A)
At no load in 7th (B3) gear	73.9	73.9
Transport in 16th (D4) gear		76.1
Bystander in 16th (D4) gear		79.6

TIRES AND WEIGHT

Rear tires—No., size, ply & psi (kPa)

Front tires—No., size, ply & psi (kPa)

Height of drawbar

Static weight with operator—Rear
— Front
— Total

Tested without ballast

Two 18.4R30; **, 12 (85)
Two 12.4R24; **, 14 (95)
16.5 in (420 mm)
5655 lb (2565 kg)
3540 lb (1606 kg)
9195 lb (4171 kg)

Location of tests: Nebraska Tractor Test Laboratory, University of Nebraska, Lincoln Nebraska 68583-0832

Dates of tests: March 31 to April 2, 2015

Manufacturer: John Deere Commercial Products Inc., 700 Horizon South Parkway, Grovetown Ga. USA, 30813

CONSUMABLE Fluids, OIL and TIME: Fuel No. 2 Diesel **Specific gravity converted to 60°/60°F (15°/15°C)** 0.8447 **Fuel weight** 7.033 lbs/gal (0.843 kg/l) **Diesel Exhaust Fluid (DEF)** 32% aqueous urea solution **DEF weight** 9.071 lbs/gal (1.087 kg/l) **Oil** SAE 10W30 **API service classification** CJ-4 **Transmission and hydraulic lubricant** John Deere Hy-Gard fluid **Front axle lubricant** SAE 80W90 **API GL-5** **Total time engine was operated** 8.5 hours

ENGINE: Make John Deere Diesel **Type** four cylinder vertical with turbocharger, air to air intercooler and D.E.F. (diesel exhaust fluid) exhaust treatment **Serial No.** *PE4045U006487* **Crankshaft** lengthwise **Rated engine speed** 2200 **Bore and stroke** 4.19" x 5.00" (106.5 mm x 127.0 mm) **Compression ratio** 16.9 to 1 **Displacement** 276 cu in (4525 ml) **Starting system** 12 volt **Lubrication** pressure **Air cleaner** two paper elements and aspirator **Oil filter** one full flow cartridge **Oil cooler** engine coolant heat exchanger for crankcase oil, radiator for hydraulic and transmission oil **Fuel filter** one paper element **Fuel cooler** radiator for return fuel **Exhaust** DOC (diesel oxidation catalyst), SCR (selective catalyst reduction) and regenerative DPF (diesel particulate filter) integrated within a vertical muffler **Cooling medium temperature control** two thermostats and variable speed fan

ENGINE OPERATING PARAMETERS: **Fuel rate:** 35.5 - 38.4 lb/h (16.1 - 17.4 kg/h) **High idle:** 2275 - 2325 rpm **Turbo boost:** nominal 18.1 - 21.0 psi (125 - 145 kPa) as measured 19.9 psi (137 kPa)

CHASSIS: **Type** front wheel assist **Serial No.** *1LV5100MPEJ741118* **Tread width** rear 59.4" (1508 mm) to 71.4" (1813 mm) front 52.8" (1342 mm) to 77.0" (1957 mm) **Wheelbase** 90.6" (2300 mm) **Hydraulic control system** direct engine drive **Transmission** selective gear fixed ratio **Nominal travel speeds mph (km/h)** first 1.21 (1.95) second 1.55 (2.49) third 1.87 (3.01) fourth 2.23 (3.60) fifth 2.92 (4.70) sixth 3.73 (6.00) seventh 4.52 (7.28) eighth 5.41 (8.70) ninth 7.16 (11.52) tenth 9.14 (14.71) eleventh 11.07 (17.81) twelfth 11.08 (17.83) thirteenth 13.24 (21.31) fourteenth 14.13 (22.74) fifteenth 17.12 (27.55) sixteenth 20.47 (32.94)

HYDRAULIC PERFORMANCE

CATEGORY: II

Quick Attach: None

OECD Static test

Maximum force exerted through whole range:	4858 lbs	(21.6 kN) (2 x 56 mm)
	6390 lbs	(28.4 kN) (2 x 63 mm)
i) Sustained pressure of the open relief valve:	2911 psi	(201 bar)
ii) Pump delivery rate at minimum pressure and rated engine speed:	19.6 GPM	(74.1 l/min)
iii) Pump delivery rate at maximum		
hydraulic power:	18.1 GPM	(68.6 l/min)
Delivery pressure:	2383 psi	(164 bar)
Power:	25.2 HP	(18.8 kW)

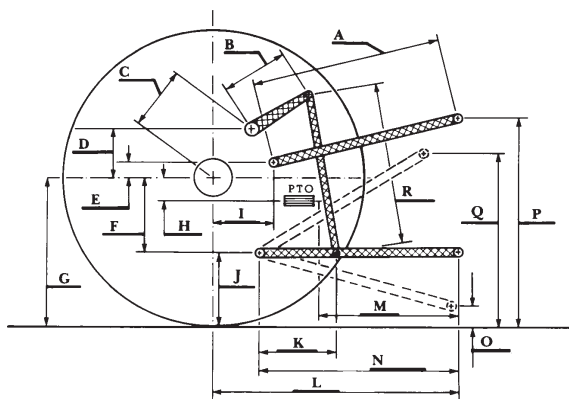
lift cylinders

reverse 1.34 (2.15), 1.70 (2.74), 2.06 (3.32), 2.47 (3.97), 3.22 (5.18), 4.11 (6.62), 4.98 (8.02), 5.95 (9.58), 7.89 (12.70), 10.07 (16.21), 12.19 (19.62), 12.21 (19.65), 14.60 (23.49), 15.57 (25.06), 18.87 (30.37), 22.56 (36.30) **Clutch** wet disc hydraulically actuated by foot pedal **Brakes** wet disc hydraulically actuated by two foot pedals which can be locked together **Steering** hydrostatic **Power take-off** 540 rpm at 2100 engine rpm, Economy PTO 540 rpm at 1645 engine rpm **Unladen tractor mass** 9020 lb (4091 kg)

REPAIRS AND ADJUSTMENTS: No repairs or adjustments.

HITCH DIMENSIONS AS TESTED—NO LOAD

	inch	mm
A	25.2	640
B	12.6	320
C	17.7	449
D	15.0	380
E	14.8	375
F	8.8	223
G	29.3	745
H	0.2	4
I	15.4	390
J	20.5	522
K	17.5	444
L	41.7	1060
M	23.0	585
N	33.1	840
O	9.1	230
P	44.6	1132
Q	36.2	919
R	27.8	705



NOTE 1: The manufacturer declares that the average time between active regenerations is 100 hours, while operated in Auto Filter Cleaning Mode, at rated speed, full load, under steady state conditions. A 2% power increase was observed during the active exhaust regeneration.

NOTE 2: The performance data on this report applies to tractors with chassis serial numbers that end with 700000 and higher.

REMARKS: All test results were determined from observed data obtained in accordance with official OECD, SAE and Nebraska test procedures. This tractor did not meet the manufacturer's claims of 4% power bulge and 30% torque rise.

We, the undersigned, certify that this is a true and correct report of official Tractor Test No. **2116**, May 13, 2015.

Roger M. Hoy
Director

M.F. Kocher
P.J. Jasa
J.D. Luck
Board of Tractor Test Engineers

Economy mode
540 PTO rpm @ 1645 engine rpm

Power HP (kW)	Crank shaft speed rpm	Diesel Consumption Gal/hr (l/h)	lb/hp.hr (kg/kW.h)	Hp.hr/gal (kW.h/l)	D.E.F. Consumption Gal/hr (l/h)
79.95 (59.62)	1645	4.31 (16.33)	0.380 (0.231)	18.53 (3.65)	0.26 (0.98)
60.16 (44.86)	1649	3.39 (12.81)	0.396 (0.241)	17.77 (3.50)	0.21 (0.81)
40.21 (29.98)	1650	2.53 (9.56)	0.442 (0.269)	15.92 (3.14)	0.16 (0.60)
20.06 (14.96)	1646	1.65 (6.26)	0.580 (0.353)	12.13 (2.39)	0.16 (0.61)
0.72 (0.54)	1642	1.11 (4.20)	10.872 (6.613)	0.65 (0.13)	0.15 (0.58)

Normal mode
540 PTO rpm @ 2100 engine rpm

Power HP (kW)	Crank shaft speed rpm	Diesel Consumption Gal/hr (l/h)	lb/hp.hr (kg/kW.h)	Hp.hr/gal (kW.h/l)	D.E.F. Consumption Gal/hr (l/h)
80.13 (59.75)	2103	4.83 (18.28)	0.424 (0.258)	16.60 (3.27)	0.21 (0.79)
60.27 (44.94)	2106	3.91 (14.79)	0.456 (0.277)	15.43 (3.04)	0.17 (0.65)
40.20 (29.98)	2105	3.01 (11.39)	0.526 (0.320)	13.36 (2.63)	0.15 (0.55)
20.04 (14.95)	2103	2.21 (8.37)	0.776 (0.472)	9.06 (1.79)	0.13 (0.49)
0.74 (0.55)	2097	1.60 (6.07)	15.331 (9.325)	0.46 (0.09)	0.16 (0.59)



JOHN DEERE 5100M DIESEL
Institute of Agriculture and Natural Resources
University of Nebraska–Lincoln