

University of Nebraska - Lincoln

DigitalCommons@University of Nebraska - Lincoln

Nebraska Tractor Tests

Tractor Test and Power Museum, The Lester F. Larsen

2015

Test 2118: Case IH Magnum 180

Nebraska Tractor Test Lab

University of Nebraska-Lincoln, tractortestlab@unl.edu

Follow this and additional works at: <https://digitalcommons.unl.edu/tractormuseumlit>



Part of the [Energy Systems Commons](#), [History of Science, Technology, and Medicine Commons](#), [Other Mechanical Engineering Commons](#), [Physical Sciences and Mathematics Commons](#), [Science and Mathematics Education Commons](#), and the [United States History Commons](#)

Nebraska Tractor Test Lab, "Test 2118: Case IH Magnum 180" (2015). *Nebraska Tractor Tests*. 2536.
<https://digitalcommons.unl.edu/tractormuseumlit/2536>

This Article is brought to you for free and open access by the Tractor Test and Power Museum, The Lester F. Larsen at DigitalCommons@University of Nebraska - Lincoln. It has been accepted for inclusion in Nebraska Tractor Tests by an authorized administrator of DigitalCommons@University of Nebraska - Lincoln.

NEBRASKA OECD TRACTOR TEST 2118—SUMMARY 978

CASE IH MAGNUM 180 DIESEL

19 SPEED

CHASSIS SERIAL NUMBERS ZERH02500 AND HIGHER

POWER TAKE-OFF PERFORMANCE

Power HP (kW)	Crank shaft speed rpm	Diesel Consumption Gal/hr (l/h)	lb/hp.hr (kg/kW.h)	Hp.hr/gal (kW.h/l)	D.E.F. Consumption Gal/hr (l/h)	Mean Atmospheric Conditions
MAXIMUM POWER AND FUEL CONSUMPTION						
Rated Engine Speed—(PTO speed—1110 rpm)						
160.27 (119.52)	2101	8.82 (33.40)	0.386 (0.235)	18.17 (3.58)	0.60 (2.29)	
Standard Power Take-off Speed (1000 rpm)						
175.16 (130.62)	1893	9.10 (34.44)	0.364 (0.221)	19.25 (3.79)	0.65 (2.48)	
Maximum Power (1 hour)						
178.60 (133.18)	1800	9.10 (34.44)	0.357 (0.217)	19.63 (3.87)	0.68 (2.56)	

VARYING POWER AND FUEL CONSUMPTION

160.27 (119.52)	2101	8.82 (33.40)	0.386 (0.235)	18.17 (3.58)	0.60 (2.29)	Air temperature
140.18 (104.53)	2159	7.97 (30.17)	0.398 (0.242)	17.59 (3.47)	0.52 (1.98)	74°F (23°C)
105.69 (78.81)	2175	6.43 (24.32)	0.426 (0.259)	16.45 (3.24)	0.41 (1.56)	Relative humidity
71.01 (52.95)	2188	4.87 (18.43)	0.480 (0.292)	14.59 (2.87)	0.32 (1.23)	34%
35.70 (26.62)	2201	3.42 (12.96)	0.672 (0.409)	10.43 (2.05)	0.22 (0.84)	Barometer
2.20 (1.64)	2212	2.25 (8.52)	7.183 (4.370)	0.98 (0.19)	0.17 (0.64)	28.94" Hg (98.00 kPa)

Maximum torque - 559 lb.-ft. (758 Nm) at 1501 rpm

Maximum torque rise - 39.6%

Torque rise at 1681 engine rpm - 33%

Power increase at 1800 engine rpm - 11.4%

DRAWBAR PERFORMANCE

UNBALLASTED - FRONT DRIVE ENGAGED

FUEL CONSUMPTION CHARACTERISTICS

Power Hp (kW)	Drawbar pull lbs (kN)	Speed mph (km/h)	Crank- shaft speed rpm	Slip %	Fuel Consumption lb/hp.hr (kg/kW.h)	Hp.hr/gal (kW.h/l)	D.E.F. Consumption lb/hp.hr (kg/kW.h)	Temp. [°] F(°C) cool- ing med	Air dry bulb	Barom. inch Hg (kPa)
Maximum Power—9th Gear										
139.56 (104.07)	11134 (49.52)	4.70 (7.56)	2100	3.5	0.443 (0.270)	15.81 (3.11)	0.043 (0.026)	187 (86)	52 (11)	29.03 (98.31)
75% of Pull at Maximum Power—9th Gear										
107.17 (79.92)	8336 (37.08)	4.82 (7.76)	2127	2.1	0.470 (0.286)	14.90 (2.93)	0.034 (0.021)	186 (86)	54 (12)	29.05 (98.37)
50% of Pull at Maximum Power—9th Gear										
73.32 (54.67)	5576 (24.80)	4.93 (7.93)	2152	0.9	0.544 (0.331)	12.89 (2.54)	0.039 (0.024)	186 (86)	54 (12)	29.05 (98.37)
75% of Pull at Reduced Engine Speed—11th Gear										
107.15 (79.90)	8422 (37.46)	4.77 (7.68)	1481	2.0	0.416 (0.253)	16.83 (3.32)	0.040 (0.024)	184 (84)	55 (13)	29.05 (98.37)
50% of Pull at Reduced Engine Speed—11th Gear										
73.37 (54.71)	5598 (24.90)	4.92 (7.92)	1508	0.9	0.463 (0.282)	15.13 (2.98)	0.045 (0.027)	184 (84)	55 (13)	29.05 (98.37)

Location of tests: Nebraska Tractor Test Laboratory, University of Nebraska, Lincoln, Nebraska 68583-0832

Dates of tests: May 13 to June 8, 2015

Manufacturer: CNH Industrial LLC, 700 State St. Racine, Wi. 53404 USA

CONSUMABLE Fluids, OIL and TIME: Fuel No. 2 Diesel **Specific gravity converted to 60°/60°F (15°/15°C)** 0.8415 **Fuel weight** 7.007 lbs/gal (0.840 kg/l) **Diesel Exhaust Fluid (DEF)** 32% aqueous urea solution **DEF weight** 9.071 lbs/gal (1.087 kg/l) **Oil SAE 10W40 API service classification** CJ-4 **Transmission and hydraulic lubricant** Case IH Akcela Hy-tran Ultrraction fluid **Front axle lubricant** SAE 85W-140 API GL-5 **Total time engine was operated:** 17.5 hours

ENGINE: Make F.P.T. Diesel **Type** six cylinder vertical with turbocharger, air to air intercooler and D.E.F. (diesel exhaust fluid) exhaust treatment. **Serial No.** *001291031* **Crankshaft** lengthwise **Rated engine speed** 2100 **Bore and stroke** 4.094" x 5.197" (104.0 mm x 132.0 mm) **Compression ratio** 17.5 to 1 **Displacement** 410 cu in (6728 ml) **Starting system** 12 volt **Lubrication** pressure **Air cleaner** two paper elements and aspirator **Oil filter** one full flow cartridge **Oil cooler** engine coolant heat exchanger for crankcase oil, radiator for hydraulic and transmission oil **Fuel filter** two paper elements **Fuel cooler** radiator for pump return fuel **Exhaust** DOC (diesel oxidation catalyst) and SCR (selective catalyst reduction) integrated within a vertical muffler **Cooling medium temperature control** 2 thermostats and variable speed fan

ENGINE OPERATING PARAMETERS: Fuel rate: 60.4 - 64.2 lb/h (27.4 - 29.1 kg/h) **High idle:** 2175 - 2225 rpm, 2200 - 2250 rpm (PTO engaged) **Turbo boost:** nominal 18.9 - 21.0 psi (130 - 145 kPa) as measured 19.8 psi (137 kPa)

CHASSIS: Type front wheel assist **Serial No.** *ZFRH01619* **Tread width** rear 64.0" (1626 mm) to 129.0" (3277 mm) front 60.0" (1524 mm) to 88.0" (2234 mm) **Wheelbase** 118.3" (3005 mm) **Hydraulic control system** direct engine drive **Transmission** selective gear fixed ratio with full range operator controlled powershift **Nominal travel speeds mph (km/h)** first 1.18 (1.90) second 1.41 (2.27) third 1.69 (2.72) fourth 2.02 (3.25) fifth 2.40 (3.87) sixth 2.87 (4.62) seventh 3.42 (5.50) eighth 4.08 (6.57) ninth 4.91 (7.90) tenth 5.87 (9.44) eleventh 6.98 (11.24) twelfth 8.34 (13.42) thirteenth 9.87 (15.89) fourteenth 11.80 (18.99) fifteenth 14.18 (22.82) sixteenth 16.95 (27.27) seventeenth 20.17 (32.46) eighteenth 24.09 (38.77) nineteenth 26.10 (42.00) (electronically limited)

DRAWBAR PERFORMANCE **UNBALLASTED - FRONT DRIVE ENGAGED** **MAXIMUM POWER IN SELECTED GEARS**

Power Hp (kW)	Drawbar pull lbs (kN)	Speed mph (km/h)	Crank- shaft speed rpm	Slip %	Fuel Consumption lb/hp.hr (kg/kW.h)	Hp.hr/gal (kW.h/l)	D.E.F. Consumption lb/hp.hr (kg/kW.h)	Temp.°F(°C) cool- ing med	Air dry bulb	Barom. inch Hg (kPa)
121.67 (90.73)	18496 (82.27)	2.47 (3.98)	2102	13.4	6th Gear 0.507 (0.309)	13.81 (2.72)	0.046 (0.028)	187 (86)	50 (10)	28.99 (98.17)
137.50 (102.53)	16369 (72.81)	3.15 (5.07)	2100	7.4	7th Gear 0.452 (0.275)	15.52 (3.06)	0.043 (0.026)	187 (86)	50 (10)	29.01 (98.24)
139.90 (104.32)	13621 (60.59)	3.85 (6.20)	2100	4.7	8th Gear 0.445 (0.270)	15.76 (3.10)	0.042 (0.026)	187 (86)	52 (11)	29.02 (98.27)
139.56 (104.07)	11134 (49.52)	4.70 (7.56)	2100	3.5	9th Gear 0.443 (0.270)	15.81 (3.11)	0.043 (0.026)	187 (86)	52 (11)	29.03 (98.31)
139.18 (103.78)	9219 (41.01)	5.66 (9.11)	2100	2.5	10th Gear 0.446 (0.271)	15.72 (3.10)	0.044 (0.027)	187 (86)	54 (12)	29.04 (98.34)
139.48 (104.01)	7716 (34.32)	6.78 (10.91)	2100	1.8	11th Gear 0.445 (0.271)	15.75 (3.10)	0.043 (0.026)	187 (86)	54 (12)	29.04 (98.34)
135.68 (101.17)	6241 (27.76)	8.15 (13.12)	2100	1.2	12th Gear 0.456 (0.278)	15.36 (3.03)	0.044 (0.027)	187 (86)	53 (12)	29.04 (98.34)

reverse 2.61 (4.20), 3.12 (5.02), 3.75 (6.03), 4.47 (7.20), 5.33 (8.58), 6.36 (10.24) **Clutch** multiple wet disc electrohydraulically operated by foot pedal **Brakes** wet disc hydraulically operated by two foot pedals that can be locked together **Steering** hydrostatic **Power take-off** 540 rpm at 1950 engine rpm or 1000 rpm at 1892 engine rpm **Unladen tractor mass** 19935 lb (9042 kg)

REPAIRS AND ADJUSTMENTS: No repairs or adjustments.

NOTE: The performance figures on this report apply to tractors with chassis serial numbers ZERH02500 and higher.

REMARKS: All test results were determined from observed data obtained in accordance with official OECD, SAE and Nebraska test procedures. This tractor did not meet the manufacturer's claim of 41 gpm (156 l/min) main implement pump flow. The manufacturer's 3 point lift claim of 13600 lbs (6170 kg), without Quick Coupler, was not verified. The performance results on this summary were taken from a test conducted under the OECD Code 2 test procedure.

We, the undersigned, certify that this is a true and correct report of official Tractor Test No. **2118**, Nebraska Summary 978, December 20, 2015.

Roger M. Hoy
Director

M.F. Kocher
P.J. Jasa
S.K. Pitla
Board of Tractor Test Engineers

TRACTOR SOUND LEVEL WITH CAB	Front Wheel Drive	
	Engaged dB(A)	Disengaged dB(A)
At no load in 9th gear	63.2	63.2
Bystander in 18th gear		81.4

TIRES AND WEIGHT

Rear Tires - No., size, ply & psi(kPa)
Front Tires - No., size, ply & psi(kPa)
Height of Drawbar
Static Weight with operator - Rear
- Front
- Total

Tested Without Ballast

Two 480/80R46;***;17(115)
Two 380/85R34;***;18(125)
19.5 in (495 mm)
11730 lb (5321 kg)
8380 lb (3801 kg)
20110 lb (9122 kg)

DRAWBAR PERFORMANCE AT 1800 ENGINE RPM
UNBALLASTED - FRONT DRIVE ENGAGED
MAXIMUM POWER IN SELECTED GEARS

Power Hp (kW)	Drawbar pull lbs (kN)	Speed mph (km/h)	Crank- shaft speed rpm	Slip %	Fuel Consumption lb/hp.hr (kg/kW.h)	Consumption Hp.hr/gal (kW.h/l)	D.E.F. Consumption lb/hp.hr (kg/kW.h)	Temp.°F(°C) cool- ing med	Air dry bulb	Barom. inch Hg (kPa)
121.92 (90.91)	18516 (82.36)	2.47 (3.98)	2102	13.4	6th Gear 0.508 (0.309)	13.79 (2.72)	0.049 (0.030)	187 (86)	50 (10)	28.99 (98.17)
140.34 (104.65)	17294 (76.93)	3.05 (4.90)	2053	8.2	7th Gear 0.450 (0.274)	15.56 (3.07)	0.042 (0.026)	187 (86)	51 (10)	28.99 (98.17)
150.08 (111.91)	16109 (71.65)	3.50 (5.62)	1947	6.8	8th Gear 0.432 (0.263)	16.23 (3.20)	0.042 (0.026)	186 (86)	51 (11)	29.02 (98.27)
154.68 (115.34)	14739 (65.56)	3.94 (6.34)	1800	5.5	9th Gear 0.414 (0.252)	16.91 (3.33)	0.042 (0.025)	186 (86)	52 (11)	29.03 (98.31)
154.33 (115.08)	12095 (53.80)	4.79 (7.70)	1800	4.1	10th Gear 0.416 (0.253)	16.83 (3.32)	0.043 (0.026)	186 (86)	53 (11)	29.03 (98.31)
156.84 (116.95)	10230 (45.50)	5.75 (9.25)	1800	2.9	11th Gear 0.408 (0.248)	17.18 (3.39)	0.041 (0.025)	186 (85)	53 (12)	29.03 (98.31)
154.53 (115.23)	8367 (37.22)	6.93 (11.15)	1799	2.0	12th Gear 0.413 (0.251)	16.99 (3.35)	0.042 (0.025)	186 (85)	53 (12)	29.05 (98.37)
158.75 (118.38)	7225 (32.14)	8.24 (13.26)	1801	1.6	13th Gear 0.402 (0.245)	17.42 (3.43)	0.041 (0.025)	185 (85)	54 (12)	29.04 (98.34)

HYDRAULIC PERFORMANCE

CATEGORY: III

Quick Attach: Yes

OECD Static test

Maximum force exerted through whole range: 14269 lbs (63.5 kN) (110 mm cylinders w/QA)

two outlet sets combined

i) Sustained pressure at compensator cutoff: 2892 psi (199 bar)

ii) Pump delivery rate at minimum pressure

and rated engine speed: 38.2 GPM (144.6 l/min)

at 2200 engine rpm: 40.0 GPM (151.5 l/min)

iii) Pump delivery rate at maximum

hydraulic power: 35.7 GPM (135.3 l/min)

Delivery pressure: 2543 psi (175 bar)

Power: 53.0 HP (39.5 kW)

i) Sustained pressure at compensator cutoff: 2857 psi (197 bar)

ii) Pump delivery rate at minimum pressure

and rated engine speed: 36.6 GPM (138.5 l/min)

at 2200 engine rpm: 36.4 GPM (137.9 l/min)

iii) Pump delivery rate at maximum

hydraulic power: 32.0 GPM (121.1 l/min)

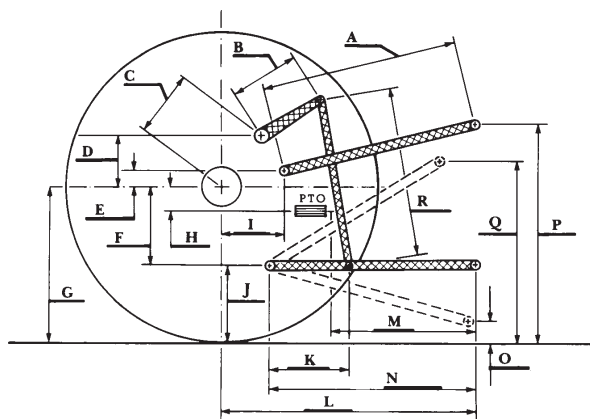
Delivery pressure: 2163 psi (149 bar)

Power: 40.4 HP (30.1 kW)

HITCH DIMENSIONS AS TESTED—NO LOAD

	inch	mm
A	26.8	680
B	17.9	454
C	15.1	383
D	14.6	372
E	10.9	277
F	10.6	270
G	36.4	925
H	2.8	71
I	19.7	500
J	25.8	655
K	26.9	682
L	48.1	1223
*L'	53.1	1349
M	22.4	570
N	38.3	974
O	9.1	230
P	52.6	1335
Q	37.7	957
R	37.7	957

*L' to Quick Attach ends



CASE IH MAGNUM 180 DIESEL