

University of Nebraska - Lincoln

DigitalCommons@University of Nebraska - Lincoln

---

Nebraska Tractor Tests

Tractor Test and Power Museum, The Lester F. Larsen

---

2015

## Test 2124A: New Holland T8.380

Nebraska Tractor Test Laboratory

*University of Nebraska-Lincoln*, [tractortestlab@unl.edu](mailto:tractortestlab@unl.edu)

Follow this and additional works at: <https://digitalcommons.unl.edu/tractormuseumlit>



Part of the [Energy Systems Commons](#), [History of Science, Technology, and Medicine Commons](#), [Other Mechanical Engineering Commons](#), [Physical Sciences and Mathematics Commons](#), [Science and Mathematics Education Commons](#), and the [United States History Commons](#)

---

Laboratory, Nebraska Tractor Test, "Test 2124A: New Holland T8.380" (2015). *Nebraska Tractor Tests*. 2564.

<https://digitalcommons.unl.edu/tractormuseumlit/2564>

This Article is brought to you for free and open access by the Tractor Test and Power Museum, The Lester F. Larsen at DigitalCommons@University of Nebraska - Lincoln. It has been accepted for inclusion in Nebraska Tractor Tests by an authorized administrator of DigitalCommons@University of Nebraska - Lincoln.

# NEBRASKA OECD TRACTOR TEST 2124A—SUMMARY 987A

## NEW HOLLAND T8.380 DIESEL

### 19 SPEED

#### POWER TAKE-OFF PERFORMANCE

Power HP (kW)	Crank shaft speed rpm	Diesel Consumption		D.E.F. Consumption		Mean Atmospheric Conditions
		Gal/hr (l/h)	lb/hp.hr (kg/kWh)	Hp.hr/gal (kW.h/l)	Gal/hr (l/h)	
<b>MAXIMUM POWER AND FUEL CONSUMPTION</b>						
<b>Rated Engine Speed—(PTO speed—1109 rpm)</b>						
274.72 (204.86)	2000	14.45 (54.70)	0.367 (0.224)	19.01 (3.74)	1.37 (5.19)	
<b>Standard Power Take-off Speed (998 rpm)</b>						
313.71 (233.94)	1800	16.02 (60.63)	0.357 (0.217)	19.59 (3.86)	1.60 (6.07)	
<b>Maximum Power (1 hour)</b>						
313.71 (233.94)	1800	16.02 (60.63)	0.357 (0.217)	19.59 (3.86)	1.60 (6.07)	

#### VARYING POWER AND FUEL CONSUMPTION

274.72 (204.86)	2000	14.45 (54.70)	0.367 (0.224)	19.01 (3.74)	1.37 (5.19)	Air temperature
246.95 (184.15)	2113	13.52 (51.18)	0.383 (0.233)	18.26 (3.60)	1.19 (4.49)	75°F (27°C)
188.38 (140.48)	2151	10.94 (41.41)	0.406 (0.247)	17.22 (3.39)	0.79 (3.00)	Relative humidity
127.00 (94.70)	2173	8.26 (31.27)	0.454 (0.276)	15.37 (3.03)	0.54 (2.05)	60%
64.57 (48.15)	2209	5.68 (21.50)	0.615 (0.374)	11.37 (2.24)	0.40 (1.50)	Barometer
1.58 (1.18)	2225	3.05 (11.56)	13.491 (8.206)	0.52 (0.10)	0.27 (1.01)	28.75" Hg (97.36 kPa)

Maximum torque - 1067 lb.-ft. (1447 Nm) at 1300 rpm  
 Maximum torque rise - 47.9%  
 Torque rise at 1600 engine rpm - 40%  
 Power increase at 1800 engine rpm - 14.2%

#### DRAWBAR PERFORMANCE UNBALLASTED - FRONT DRIVE ENGAGED FUEL CONSUMPTION CHARACTERISTICS

Power Hp (kW)	Drawbar pull lbs (kN)	Speed mph (km/h)	Crank- shaft speed rpm	Slip %	Fuel Consumption lb/hp.hr (kg/kWh)	D.E.F. Consumption lb/hp.hr (kg/kWh)	Temp. °F(°C) cool- ing dry med	Air bulb	Barom. inch Hg (kPa)	
<b>Maximum Power—7th Gear</b>										
234.51 (174.87)	19062 (84.79)	4.61 (7.42)	2000	4.3	0.431 (0.262)	16.22 (3.20)	0.051 (0.031)	211 (99)	72 (22)	28.71 (97.22)
<b>75% of Pull at Maximum Power—7th Gear</b>										
189.47 (141.29)	14259 (63.43)	4.98 (8.01)	2124	2.8	0.454 (0.276)	15.38 (3.03)	0.047 (0.029)	212 (100)	75 (24)	28.70 (97.19)
<b>50% of Pull at Maximum Power—7th Gear</b>										
130.20 (97.09)	9500 (42.26)	5.14 (8.27)	2165	2.0	0.510 (0.310)	13.69 (2.70)	0.043 (0.026)	208 (98)	75 (24)	28.70 (97.19)
<b>75% of Pull at Reduced Engine Speed—10th Gear</b>										
189.45 (141.27)	14126 (62.84)	5.03 (8.10)	1413	2.8	0.399 (0.243)	17.50 (3.45)	0.052 (0.032)	211 (99)	77 (25)	28.67 (97.09)
<b>50% of Pull at Reduced Engine Speed—10th Gear</b>										
130.39 (97.23)	9505 (42.28)	5.14 (8.27)	1428	2.0	0.431 (0.262)	16.23 (3.20)	0.053 (0.032)	199 (93)	75 (24)	28.69 (97.16)

**Location of tests:** Nebraska Tractor Test Laboratory, University of Nebraska, Lincoln, Nebraska 68583-0832

**Dates of tests:** September 4 - 17, 2015

**Manufacturer:** CNH Industrial LLC, 700 State St. Racine, Wi. 53404 USA

**CONSUMABLE Fluids, OIL and TIME: Fuel** No. 2 Diesel **Specific gravity converted to 60°/60°F (15°/15°C)** 0.8390 **Fuel weight** 6.986 lbs/gal (0.838 kg/l) **Diesel Exhaust Fluid (DEF)** 32% aqueous urea solution **DEF weight** 9.071 lbs/gal (1.087 kg/l) **Oil SAE 10W40 API service classification CJ-4 Transmission and hydraulic lubricant** New Holland Ambra Mastertran Ultrraction fluid **Front axle lubricant** SAE 85W-140 API GL-5 **Total time engine was operated:** 21.0 hours

**ENGINE: Make** F.P.T. Diesel **Type** six cylinder vertical with turbocharger, air to air intercooler and D.E.F. (diesel exhaust fluid) exhaust treatment. **Serial No.** \*141H00078164\* **Crankshaft** lengthwise **Rated engine speed** 2000 **Bore and stroke** 4.606" x 5.315" (117.0 mm x 135.0 mm) **Compression ratio** 15.9 to 1 **Displacement** 531 cu in (8704 ml) **Starting system** 12 volt **Lubrication** pressure **Air cleaner** two paper elements and aspirator **Oil filter** one full flow cartridge **Oil cooler** engine coolant heat exchanger for crankcase oil, radiator for hydraulic and transmission oil **Fuel filter** two paper elements **Fuel cooler** radiator for pump return fuel **Exhaust** DOC (diesel oxidation catalyst) and SCR (selective catalyst reduction) integrated within a vertical muffler **Cooling medium temperature control** thermostat and variable speed fan

**ENGINE OPERATING PARAMETERS: Fuel rate:** 98.1 - 104.1 lb/h (44.5 - 47.2 kg/h) **High idle:** 2200 - 2250 rpm **Turbo boost:** nominal 19.6 - 22.5 psi (135 - 155 kPa) as measured 20.8 psi (143 kPa)

**CHASSIS: Type** front wheel assist with duals **Serial No.** \*ZFRF01306\* **Tread width** rear 64.0" (1626 mm) to 129.0" (3277 mm) front 60.0" (1524 mm) to 88.0" (2235 mm) **Wheelbase** 136.0" (3454 mm) **Hydraulic control system** direct engine drive **Transmission** selective gear fixed ratio with full range operator controlled powershift **Nominal travel speeds mph (km/h)** first 2.06 (3.32) second 2.36 (3.80) third 2.73 (4.39) fourth 3.13 (5.03) fifth 3.59 (5.77) sixth 4.11 (6.62) seventh 4.80 (7.72) eighth 5.51 (8.86) ninth 6.35 (10.22) tenth 7.28 (11.72) eleventh 8.35 (13.44) twelfth 9.58 (15.42) thirteenth 11.94 (19.21) fourteenth 13.70 (22.04) fifteenth 15.80 (25.42) sixteenth 18.11 (29.15) seventeenth 20.79 (33.45) eighteenth 23.84 (38.37) nineteenth 26.10 (42.00) electronically limited reverse 2.96 (4.77), 3.40 (5.48), 6.91 (11.12), 7.92 (12.75)

**DRAWBAR PERFORMANCE**  
**UNBALLASTED - FRONT DRIVE ENGAGED**  
**MAXIMUM POWER IN SELECTED GEARS**

Power Hp (kW)	Drawbar pull lbs (kN)	Speed mph (km/h)	Crank- shaft speed rpm	Slip %	Fuel Consumption lb/hp.hr (kg/kW.h)	Hp.hr/gal (kW.h/l)	D.E.F. Consumption lb/hp.hr (kg/kW.h)	Temp.°F(°C) cool- ing dry med	Air dry bulb	Barom. inch Hg (kPa)
5th Gear										
204.39 (152.41)	24097 (107.19)	3.18 (5.12)	2062	14.4	0.489 (0.297)	14.30 (2.82)	0.061 (0.037)	213 (101)	63 (17)	28.79 (97.49)
6th Gear										
226.88 (169.18)	22060 (98.13)	3.86 (6.21)	2000	6.7	0.446 (0.272)	15.65 (3.08)	0.054 (0.033)	212 (100)	66 (19)	28.80 (97.53)
7th Gear										
234.51 (174.87)	19062 (84.79)	4.61 (7.42)	2000	4.3	0.431 (0.262)	16.22 (3.20)	0.051 (0.031)	211 (99)	72 (22)	28.71 (97.22)
8th Gear										
234.36 (174.76)	16420 (73.04)	5.35 (8.61)	2000	3.4	0.433 (0.263)	16.13 (3.18)	0.051 (0.031)	212 (100)	72 (22)	28.70 (97.19)
9th Gear										
236.65 (176.47)	14296 (63.59)	6.21 (9.99)	2000	2.7	0.428 (0.260)	16.32 (3.21)	0.051 (0.031)	213 (100)	73 (23)	28.70 (97.19)
10th Gear										
234.32 (174.73)	12281 (54.63)	7.16 (11.51)	1999	2.4	0.433 (0.264)	16.12 (3.18)	0.051 (0.031)	213 (101)	72 (22)	28.70 (97.19)
11th Gear										
232.15 (173.11)	10565 (46.99)	8.24 (13.26)	1999	2.0	0.438 (0.267)	15.94 (3.14)	0.051 (0.031)	212 (100)	73 (23)	28.70 (97.19)

**Clutch** multiple wet disc electrohydraulically operated by foot pedal **Brakes** wet disc hydraulically operated by two foot pedals that can be locked together **Steering** hydrostatic **Power take-off** 1000 rpm at 1803 engine rpm **Unladen tractor mass** 25215 lb (11437 kg)

**REPAIRS AND ADJUSTMENTS:** No repairs or adjustments.

**NOTE:** The data on this summary was obtained from testing conducted on the Case IH Magnum 310 Diesel.

**REMARKS:** All test results were determined from observed data obtained in accordance with official OECD, SAE and Nebraska test procedures. This tractor did not meet the manufacturer's remote flow claim of 44 GPM (166 l/min). The manufacturer's remote flow claim of 75 GPM (282 l/min), with MegaFlow option, was not verified. The performance results on this summary were taken from OECD tests conducted under the Code 2 test procedure.

We, the undersigned, certify that this is a true and correct report of official Tractor Test No. **2124A**, Nebraska Summary 987A, January 22, 2016.

Roger M. Hoy  
 Director

M.F. Kocher  
 P.J. Jasa  
 J.D. Luck  
 Board of Tractor Test Engineers

TRACTOR SOUND LEVEL WITH CAB	Front Wheel Drive	
	Engaged dB(A)	Disengaged dB(A)
At no load in 7th gear	67.7	67.8
Bystander in 18th gear		84.4

**TIRES AND WEIGHT**

**Rear Tires** - No., size, ply & psi(kPa)  
**Front Tires** - No., size, ply & psi(kPa)  
**Height of Drawbar**  
**Static Weight with operator** - Rear  
 - Front  
 - Total

**Tested Without Ballast**

Four 480/80R50;\*\*\*;12(85)  
 Two 420/85R34;\*\*\*;23(160)  
 21.5 in (545 mm)  
 14110 lb (6400 kg)  
 11280 lb (5117 kg)  
 25390 lb(11517 kg)

**DRAWBAR PERFORMANCE AT 1800 ENGINE RPM**  
**UNBALLASTED - FRONT DRIVE ENGAGED**  
**MAXIMUM POWER IN SELECTED GEARS**

Power Hp (kW)	Drawbar pull lbs (kN)	Speed mph (km/h)	Crank- shaft speed rpm	Slip %	Fuel Consumption lb/hp.hr (kg/kW.h)	Fuel Consumption Hp.hr/gal (kW.h/l)	D.E.F. Consumption lb/hp.hr (kg/kW.h)	Temp. °F (°C) cool- ing med	Air dry bulb	Barom. inch Hg (kPa)
5th Gear										
208.24 (155.28)	24098 (107.19)	3.24 (5.21)	2059	12.7	0.483 (0.294)	14.47 (2.85)	0.059 (0.036)	213 (101)	63 (17)	28.79 (97.49)
6th Gear										
230.25 (171.69)	23124 (102.86)	3.74 (6.01)	1973	8.4	0.450 (0.274)	15.53 (3.06)	0.056 (0.034)	212 (100)	67 (19)	28.80 (97.53)
7th Gear										
254.15 (189.52)	22232 (98.89)	4.29 (6.90)	1912	6.9	0.428 (0.260)	16.34 (3.22)	0.054 (0.033)	212 (100)	69 (21)	28.79 (97.49)
8th Gear										
269.64 (201.07)	21167 (94.15)	4.78 (7.69)	1836	5.9	0.416 (0.253)	16.81 (3.31)	0.053 (0.032)	212 (100)	71 (21)	28.79 (97.49)
9th Gear										
271.65 (202.57)	18573 (82.62)	5.49 (8.83)	1800	4.4	0.410 (0.249)	17.05 (3.36)	0.053 (0.032)	213 (100)	72 (22)	28.79 (97.49)
10th Gear										
272.79 (203.42)	16101 (71.62)	6.35 (10.22)	1800	3.4	0.409 (0.249)	17.08 (3.36)	0.053 (0.032)	212 (100)	73 (23)	28.79 (97.49)
11th Gear										
271.31 (202.32)	13869 (61.69)	7.34 (11.81)	1800	2.8	0.411 (0.250)	17.02 (3.35)	0.052 (0.032)	212 (100)	74 (23)	28.79 (97.49)
12th Gear										
269.67 (201.09)	11953 (53.17)	8.46 (13.62)	1800	2.3	0.414 (0.252)	16.88 (3.33)	0.052 (0.032)	212 (100)	75 (24)	28.79 (97.49)

## HYDRAULIC PERFORMANCE

CATEGORY: 3

Quick Attach: Yes

OECD Static test

Maximum force exerted through whole range: 16037 lbs (71.3 kN) (43" links)  
18414 lbs (81.9 kN) (38" links)

**Standard pump**  
two outlet sets combined

i) Sustained pressure at compensator cutoff: 2836 psi (196 bar)

ii) Pump delivery rate at minimum pressure and rated engine speed: 42.7 GPM (161.8 l/min)

iii) Pump delivery rate at maximum hydraulic power: 43.0 GPM (162.7 l/min)  
Delivery pressure: 2470 psi (170 bar)  
Power: 61.9 HP (46.2 kW)

i) Sustained pressure at compensator cutoff: 2840 psi (196 bar)

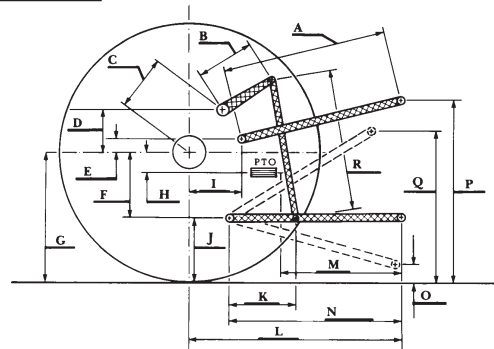
ii) Pump delivery rate at minimum pressure and rated engine speed: 42.0 GPM (158.9 l/min)

iii) Pump delivery rate at maximum hydraulic power: 37.8 GPM (143.2 l/min)  
Delivery pressure: 2271 psi (157 bar)  
Power: 50.1 HP (37.4 kW)

## HITCH DIMENSIONS AS TESTED—NO LOAD

	38" links		43" links	
	inch	mm	inch	mm
A	25.0	635	30.3	770
B	20.5	520	20.5	520
C	22.9	581	22.9	581
D	20.7	525	20.7	525
E	10.5	266	10.5	266
F	15.7	400	15.7	400
G	36.6	930	36.6	930
H	3.5	90	3.5	90
I	20.9	530	20.9	530
J	20.9	530	20.9	530
K	30.2	768	30.2	768
L	46.2	1174	51.0	1295
*L'	51.1	1299	55.9	1420
M	20.3	515	25.0	636
N	38.3	974	43.1	1095
O	9.0	230	9.0	230
P	47.8	1215	47.8	1215
Q	37.4	950	42.7	1085
R	40.0	1015	38.6	980

\*L' to Quick Attach ends



**NEW HOLLAND T8.380 DIESEL**