

University of Nebraska - Lincoln

DigitalCommons@University of Nebraska - Lincoln

---

Nebraska Tractor Tests

Tractor Test and Power Museum, The Lester F.  
Larsen

---

2018

## Test 2191: John Deere 5090R OC

Nebraska Tractor Test Laboratory

University of Nebraska-Lincoln, tractortestlab@unl.edu

Follow this and additional works at: <https://digitalcommons.unl.edu/tractormuseumlit>



Part of the [Energy Systems Commons](#), [History of Science, Technology, and Medicine Commons](#), [Other Mechanical Engineering Commons](#), [Physical Sciences and Mathematics Commons](#), [Science and Mathematics Education Commons](#), and the [United States History Commons](#)

---

Laboratory, Nebraska Tractor Test, "Test 2191: John Deere 5090R OC" (2018). *Nebraska Tractor Tests*. 2648.

<https://digitalcommons.unl.edu/tractormuseumlit/2648>

This Article is brought to you for free and open access by the Tractor Test and Power Museum, The Lester F. Larsen at DigitalCommons@University of Nebraska - Lincoln. It has been accepted for inclusion in Nebraska Tractor Tests by an authorized administrator of DigitalCommons@University of Nebraska - Lincoln.

# NEBRASKA TRACTOR TEST 2191 JOHN DEERE 5090R DIESEL 16 SPEED

Open center hydraulic system

## POWER TAKE-OFF PERFORMANCE

Power HP (kW)	Crank shaft speed rpm	Diesel Consumption Gal/hr (l/h)	lb/hp.hr (kg/kW.h)	Hp.hr/gal (kW.h/l)	D.E.F. Consumption Gal/hr (l/h)	Mean Atmospheric Conditions
<b>MAXIMUM POWER AND FUEL CONSUMPTION</b>						
<b>Rated Engine Speed—(PTO speed—566 rpm)</b>						
77.17 (57.55)	2201	4.84 (18.33)	0.441 (0.268)	15.94 (3.14)	0.16 (0.59)	Fuel used during active exhaust regeneration—0.58 gal (2.18 l) (see note 1, p.2)
<b>Standard Power Take-off Speed(539rpm)</b>						
81.89 (61.07)	2100	4.88 (18.49)	0.419 (0.255)	16.77 (3.30)	0.17 (0.65)	
<b>Maximum Power (1 hour)</b>						
89.61 (66.82)	1902	4.96 (18.78)	0.389 (0.236)	18.06 (3.56)	0.22 (0.85)	

## VARYING POWER AND FUEL CONSUMPTION

77.17 (57.55)	2201	4.84 (18.33)	0.441 (0.268)	15.94 (3.14)	0.16 (0.59)	Air temperature
67.66 (50.45)	2269	4.52 (17.12)	0.469 (0.286)	14.96 (2.95)	0.13 (0.50)	76°F (25°C)
50.88 (37.94)	2279	3.77 (14.26)	0.520 (0.316)	13.50 (2.66)	0.10 (0.36)	Relative humidity
34.11 (25.44)	2293	3.13 (11.84)	0.644 (0.392)	10.91 (2.15)	0.05 (0.18)	47%
17.18 (12.81)	2309	2.43 (9.21)	0.994 (0.605)	7.06 (1.39)	0.06 (0.24)	Barometer
1.08 (0.81)	2321	1.85 (6.99)	11.961 (7.276)	0.59 (0.12)	0.04 (0.16)	28.04" Hg (94.95 kPa)

Maximum torque - 269 lb.-ft. (365 Nm) at 1552 rpm  
Maximum torque rise - 46.1%  
Torque rise at 1762 engine rpm - 40%  
Power increase at 1902 engine rpm - 16.1%

## TRACTOR SOUND LEVEL WITH CAB

	Front Wheel Drive Engaged dB(A)	Disengaged dB(A)
At no load in 7th (B3) gear	73.6	73.4
Transport in 16th (D4) gear	76.3	76.3
Bystander in 16th (D4) gear	82.8	82.8

Horizontal distances of drawbar hitch point behind rear wheel axis - 32.5" (825 mm), 34.4" (875 mm)

## TIRES AND WEIGHT

**Rear tires**—No., size, ply & psi (kPa)  
**Front tires**—No., size, ply & psi (kPa)  
**Height of drawbar**  
**Static weight with operator**—Rear  
—Front  
—Total

## Tested without ballast

Two 16.9R30; \*\*, 12 (85)  
Two 11.2R24; \*\*, 18 (125)  
16.0 in (405 mm)  
5900 lb (2676 kg)  
3635 lb (1649 kg)  
9535 lb (4325 kg)

**Location of tests:** Nebraska Tractor Test Laboratory, University of Nebraska, Lincoln Nebraska 68583-0832

**Dates of tests:** April 13 - 24, 2018

**Manufacturer:** John Deere Commercial Products Inc., 700 Horizon South Parkway, Grovetown Ga. USA 30813

**CONSUMABLE Fluids, OIL and TIME:** Fuel No. 2 Diesel **Specific gravity converted to 60°/60°F (15°/15°C)** 0.8434 **Fuel weight** 7.023 lbs/gal (0.842 kg/l) **Diesel Exhaust Fluid (DEF)** 32% aqueous urea solution **DEF weight** 9.071 lbs/gal (1.087 kg/l) **Oil** SAE 10W30 **API service classification** CJ-4 **Transmission and hydraulic lubricant** John Deere Hy-Gard fluid **Front axle lubricant** John Deere Hy-Gard fluid **Total time engine was operated** 9.5 hours

**ENGINE:** Make John Deere Diesel **Type** four cylinder vertical with turbocharger, air to air intercooler and D.E.F. (diesel exhaust fluid) exhaust treatment **Serial No.** \*PE4045U057010\* **Crankshaft** lengthwise **Rated engine speed** 2200 **Bore and stroke** 4.19" x 5.00" (106.5 mm x 127.0 mm) **Compression ratio** 16.9 to 1 **Displacement** 276 cu in (4525 ml) **Starting system** 12 volt **Lubrication** pressure **Air cleaner** two paper elements and aspirator **Oil filter** one full flow cartridge **Oil cooler** engine coolant heat exchanger for crankcase oil, radiator for hydraulic and transmission oil **Fuel filter** one paper element **Fuel cooler** radiator for return fuel **Exhaust** regenerative aftertreatment system consisting of DOC (diesel oxidation catalyst) and SCR (selective catalyst reduction) with an underhood muffler and vertical exhaust **Cooling medium temperature control** two thermostats and variable speed fan

**ENGINE OPERATING PARAMETERS:** **Fuel rate:** 32.4 - 35.1 lb/h (14.7 - 15.9 kg/h) **High idle:** 2300 - 2350 rpm **Turbo boost:** nominal 16.0 - 18.9 psi (110 - 130 kPa) as measured 17.4 psi (120 kPa)

**CHASSIS:** **Type** front wheel assist **Serial No.** \*1LV5090RHHH400177\* **Tread width** rear 58.0" (1473 mm) to 71.6" (1819 mm) front 58.6" (1488 mm) to 81.5" (2070 mm) **Wheelbase** 88.6" (2250 mm) **Hydraulic control system** direct engine drive **Transmission** selective gear fixed ratio **Nominal travel speeds mph (km/h)** first 1.29 (2.07) second 1.59 (2.56) third 1.97 (3.17) fourth 2.41 (3.88) fifth 2.98 (4.79) sixth 3.67 (5.91) seventh 4.55 (7.33) eighth 5.59 (8.99) ninth 5.76 (9.27) tenth 7.11 (11.45) eleventh 8.81 (14.18) twelfth 10.81 (17.40) thirteenth 12.89 (20.75) fourteenth 15.93 (25.63) fifteenth 19.73 (31.75) sixteenth 24.21 (38.96)

## HYDRAULIC PERFORMANCE

CATEGORY: II

Quick Attach: None

OECD Static test

		<u>lift cylinders</u>
Maximum force exerted through whole range:	7720 lbs (34.3 kN) (2 x 75 mm)	
	8678 lbs (38.6 kN) (2 x 80 mm)	
	<u>single outlet set</u>	<u>two outlet sets combined</u>
i) Sustained pressure of the open relief valve:	2857 psi (197 bar)	2865 psi (198 bar)
ii) Pump delivery rate at minimum pressure and rated engine speed:	21.4 GPM (80.9 l/min)	21.3 GPM (80.6 l/min)
iii) Pump delivery rate at maximum hydraulic power:	21.2 GPM (80.4 l/min)	21.2 GPM (80.3 l/min)
Delivery pressure:	2464 psi (170 bar)	2618 psi (181 bar)
Power:	30.5 HP (22.8 kW)	32.4 HP (24.2 kW)

reverse 1.37 (2.21), 1.70 (2.73), 2.10 (3.38), 2.58 (4.15), 3.18 (5.11), 3.92 (6.31), 4.86 (7.82), 5.96 (9.59), 6.15 (9.89), 7.59 (12.22), 9.40 (15.13), 11.54 (18.57), 13.76 (22.15), 17.00 (27.35), 18.64 (30.00), 18.64 (30.00) electronically limited **Clutch** wet disc hydraulically actuated by foot pedal **Brakes** wet disc hydraulically actuated by two foot pedals which can be locked together **Steering** hydrostatic **Power take-off** 540 rpm at 2100 engine rpm, Economy PTO 540 rpm at 1645 engine rpm **Unladen tractor mass** 9360 lb (4246 kg)

**REPAIRS AND ADJUSTMENTS:** No repairs or adjustments.

**NOTE 1:** The manufacturer declares that the average time between active regenerations is 150 hours. A 2% power increase was observed during the active exhaust regeneration.

**NOTE 2:** The performance data on this report applies to tractors with an open center hydraulic system.

**REMARKS:** This tractor exceeded the 73 dB(A) sound power claim, with front drive engaged, by 14.8% (0.6 dB(A)) and with front drive disengaged by 9.6% (0.4 dB(A)). All test results were determined from observed data obtained in accordance with official OECD, SAE and Nebraska test procedures.

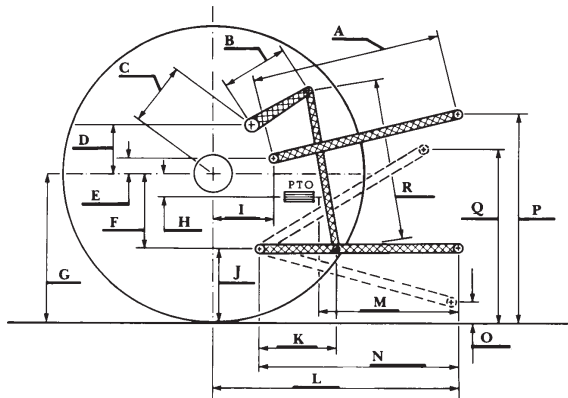
We, the undersigned, certify that this is a true and correct report of official Tractor Test No. **2191**, June 15, 2018.

Roger M. Hoy  
Director

M.F. Kocher  
P.J. Jasa  
J.D. Luck  
Board of Tractor Test Engineers

### HITCH DIMENSIONS AS TESTED—NO LOAD

	inch	mm
A	26.4	670
B	14.1	358
C	17.7	449
D	15.0	380
E	14.4	365
F	8.8	223
G	31.3	795
H	0.2	4
I	14.4	365
J	22.5	572
K	17.5	444
L	41.7	1060
M	23.0	585
N	33.1	840
O	9.1	230
P	46.5	1182
Q	38.4	975
R	32.3	820



### RECOMMENDED CITATION FORMAT:

NTTL.(2018). Nebraska tractor test 2191 for John Deere 5090R OC Diesel. Lincoln, NE:Nebraska Tractor Test Laboratory. Retrieved from <http://tractortestlab.unl.edu>

## Shiftable PTO Performance

### Economy mode

540 PTO rpm @ 1645 engine rpm

Power HP (kW)	Crank shaft speed rpm	Diesel Consumption		D.E.F. Consumption	
		Gal/hr (l/h)	lb/hp.hr (kg/kW.h)	Hp.hr/gal (kW.h/l)	Gal/hr (l/h)
81.86 (61.04)	1645	4.37 (16.55)	0.375 (0.228)	18.73 (3.69)	0.19 (0.71)
61.44 (45.82)	1651	3.38 (12.78)	0.386 (0.235)	18.20 (3.58)	0.14 (0.52)
41.04 (30.60)	1651	2.50 (9.45)	0.427 (0.260)	16.44 (3.24)	0.09 (0.35)
20.46 (15.25)	1641	1.74 (6.59)	0.598 (0.364)	11.74 (2.31)	0.03 (0.11)
0.95 (0.71)	1641	1.09 (4.14)	8.096 (4.925)	0.87 (0.17)	0.04 (0.14)

### Normal mode

540 PTO rpm @ 2100 engine rpm

Power HP (kW)	Crank shaft speed rpm	Diesel Consumption		D.E.F. Consumption	
		Gal/hr (l/h)	lb/hp.hr (kg/kW.h)	Hp.hr/gal (kW.h/l)	Gal/hr (l/h)
81.86 (61.04)	2100	4.86 (18.39)	0.417 (0.254)	16.85 (3.32)	0.18 (0.68)
61.42 (45.80)	2098	3.95 (14.97)	0.452 (0.275)	15.53 (3.06)	0.13 (0.50)
40.97 (30.55)	2097	3.10 (11.74)	0.532 (0.323)	13.21 (2.60)	0.06 (0.22)
20.48 (15.27)	2099	2.21 (8.36)	0.757 (0.461)	9.27 (1.83)	0.03 (0.11)
0.93 (0.69)	2097	1.60 (6.07)	12.133 (7.380)	0.58 (0.11)	0.01 (0.02)



**JOHN DEERE 5090R DIESEL**

Institute of Agriculture and Natural Resources  
University of Nebraska–Lincoln