

University of Nebraska - Lincoln

DigitalCommons@University of Nebraska - Lincoln

Nebraska Tractor Tests

Tractor Test and Power Museum, The Lester F.
Larsen

1996

Nebraska Summary: S217 White 6045

Nebraska Tractor Test Laboratory

University of Nebraska-Lincoln, tractortestlab@unl.edu

Follow this and additional works at: <https://digitalcommons.unl.edu/tractormuseumlit>



Part of the [Energy Systems Commons](#), [History of Science, Technology, and Medicine Commons](#), [Other Mechanical Engineering Commons](#), [Physical Sciences and Mathematics Commons](#), [Science and Mathematics Education Commons](#), and the [United States History Commons](#)

Laboratory, Nebraska Tractor Test, "Nebraska Summary: S217 White 6045" (1996). *Nebraska Tractor Tests*. 2770.

<https://digitalcommons.unl.edu/tractormuseumlit/2770>

This Article is brought to you for free and open access by the Tractor Test and Power Museum, The Lester F. Larsen at DigitalCommons@University of Nebraska - Lincoln. It has been accepted for inclusion in Nebraska Tractor Tests by an authorized administrator of DigitalCommons@University of Nebraska - Lincoln.

SUMMARY OF OECD TEST 1610—NEBRASKA SUMMARY 217

WHITE 6045 DIESEL

16 SPEED

POWER TAKE-OFF PERFORMANCE

Power HP (kW)	Crank shaft speed rpm	Gal/hr (l/h)	lb/hp.hr (kg/kW.h)	Hp.hr/gal (kW.h/l)	Mean Atmospheric Conditions
MAXIMUM POWER AND FUEL CONSUMPTION					
Rated Engine Speed (PTO speed 612 rpm)					
45.7 (34.1)	2354	2.75 (10.42)	0.421 (0.256)	16.60 (3.27)	
Standard Power Take-off speed (540 rpm)					
44.1 (32.9)	2077	2.55 (9.64)	0.404 (0.246)	17.31 (3.41)	

VARYING POWER AND FUEL CONSUMPTION

45.7 (34.1)	2354	2.75 (10.42)	0.421 (0.256)	16.60 (3.27)	Air temperature
39.7 (29.6)	2415	2.48 (9.37)	0.436 (0.265)	16.04 (3.16)	66°F (19°C)
30.0 (22.4)	2443	2.04 (7.74)	0.477 (0.290)	14.67 (2.89)	Relative humidity
20.1 (15.0)	2460	1.56 (5.91)	0.542 (0.330)	12.89 (2.54)	62%
10.2 (7.6)	2500	1.18 (4.46)	0.809 (0.492)	8.64 (1.70)	Barometer
.....	2552	0.87 (3.31)	29.8" Hg (101.1 kPa)

Maximum Torque 132.1 lb.-ft. (179.2 Nm) at 1249 rpm
 Maximum Torque Rise 29.5%
 Torque rise at 1850 engine rpm 16%

DRAWBAR PERFORMANCE

FUEL CONSUMPTION CHARACTERISTICS

Power Hp (kW)	Drawbar pull lbs (kN)	Speed mph (km/h)	Crank- shaft speed rpm	Slip %	Fuel Consumption lb/hp.hr (kg/kW.h)	Hp.hr/gal (kW.h/l)	Temp. °F (°C) cool- ing med	Air dry bulb	Barom. Hg (kPa)
75% of Pull at Maximum Power Five Hours 10th (1FH) Gear									
30.3 (22.6)	2400 (10.67)	4.73 (7.62)	2420	3	0.554 (0.337)	12.62 (2.49)	air cld	46 (8)	29.5 (100.0)

MAXIMUM POWER IN SELECTED GEARS

7th (4NL) Gear									
32.7 (24.4)	5115 (22.75)	2.40 (3.86)	2397	15	0.546 (0.332)	12.80 (2.52)	air cld	41 (5)	29.6 (100.2)
8th (4NH) Gear									
36.5 (27.2)	4340 (19.30)	3.15 (5.07)	2350	8	0.528 (0.321)	13.24 (2.61)	air cld	41 (5)	29.6 (100.1)
9th (1FL) Gear									
38.8 (28.9)	4100 (18.24)	3.55 (5.70)	2350	8	0.500 (0.304)	14.01 (2.76)	air cld	41 (5)	29.6 (100.2)
10th (1FH) Gear									
39.0 (29.1)	3210 (14.27)	4.56 (7.34)	2350	4	0.494 (0.301)	14.14 (2.79)	air cld	43 (6)	29.5 (100.0)
11th (2FL) Gear									
38.0 (28.3)	2455 (10.91)	5.80 (9.34)	2351	4	0.506 (0.308)	13.81 (2.72)	air cld	41 (5)	29.5 (100.0)
12th (2FH) Gear									
37.2 (27.7)	1860 (8.29)	7.49 (12.04)	2350	2	0.518 (0.315)	13.50 (2.66)	air cld	43 (6)	29.5 (100.0)
13th (3FL) Gear									
34.1 (25.4)	1320 (5.88)	9.67 (15.57)	2350	1	0.565 (0.343)	12.38 (2.44)	air cld	43 (6)	29.5 (100.0)

TRACTOR SOUND LEVEL WITHOUT CAB

dB(A)

Maximum sound level - in 10th (1FH) gear	94.6
Bystander in 16th (4FH) gear	81.4

Location of Test: ISMA Via Milano 43, 24047 Treviglio BG Italy

Dates of Test: February, 1996

Manufacturer: S+L+H S.p.A. V.le F. Cassani 15, 24047 Treviglio BG Italy

FUEL OIL and TIME: Fuel No. 2 Diesel Cetane No. NA Specific gravity converted to 60°/60° F (15°/15°C) 0.839 Fuel weight 6.99 lbs/gal (0.838 kg/l) Oil SAE 30 API service classification SE/CD Oil consumption for 10 hours 0.57 lb (260 gm) Transmission and hydraulic lubricant AKROS Multi 95 fluid Front axle lubricant SAE 95 API GL-4

ENGINE: Make S+L+H Diesel Type three cylinder vertical Serial No. 1732 Crankshaft lengthwise Rated engine speed 2350 Bore and stroke 4.134" x 4.547" (105 mm x 115.5 mm) Compression ratio 17.1 to 1 Displacement 183 cu in (3000 ml) Starting system 12 volt Lubrication pressure Air cleaner two paper elements Oil filter one full flow cartridge Oil cooler radiator for crankcase oil Fuel filter one paper element Muffler vertical Cooling medium temperature control air cooled

CHASSIS: Type front wheel assist Serial No. 001032 Tread width rear 51.8" (1315 mm) to 55.5" (1410 mm) front 52.8" (1340 mm) to 60.6" (1540 mm) Wheel base 80.9" (1926 mm) Hydraulic control system direct engine drive Transmission selective gear fixed ratio Nominal travel speeds mph (km/h) first 0.70 (1.13) second 0.86 (1.39) third 1.11 (1.78) fourth 1.37 (2.21) fifth 1.76 (2.83) sixth 2.17 (3.50) seventh 2.78 (4.48) eighth 3.45 (5.56) ninth 3.85 (6.20) tenth 4.77 (7.68) eleventh 6.10 (9.82) twelfth 7.58 (12.20) thirteenth 9.75 (15.69) fourteenth 12.08 (19.44) fifteenth 15.47 (24.89) sixteenth 19.01 (30.60) reverse 0.82 (1.32), 1.30 (2.10), 2.07 (3.33), 3.27 (5.26), 4.53 (7.29), 7.20 (11.59), 11.48 (18.48), 18.12 (29.17) Clutch single dry disc operated by foot pedal Brakes wet multiple disc hydraulically operated by two foot pedals which can be locked together Steering hydrostatic Power take-off 540 rpm at 2077 engine rpm Unladen tractor mass 4885 lb (2215 kg)

REPAIRS AND ADJUSTMENTS: No repairs or adjustments

CENTER OF GRAVITY

Horizontal distance forward from centerline of rear wheels	33.1 in (841 mm)
Vertical distance above roadway	30.5 in (774 mm)
Horizontal distance from center of rear wheel tread	0.2 in (6 mm) to the left

REMARKS: All test results were determined from observed data obtained in accordance with official OECD test procedures. The performance results on this summary were taken from OECD tests conducted under the Code I Standard Test Code procedure.

TURNING ON A CONCRETE SURFACE

Turning radius - with brake applied right 134° (3.40 m) left 140° (3.56 m)
- without brake right 150° (3.80 m) left 159° (4.03 m)
Turning space radius - with brake applied right 138° (3.51 m) left 144° (3.67 m)
- without brake right 154° (3.91 m) left 162° (4.14 m)

We, the undersigned, certify that this is a true summary of data from OECD Report No. **1610**, Nebraska Summary 217, September 23, 1998.

LEONARD L. BASHFORD
Director

TIRES, BALLAST AND WEIGHT

	With Ballast	Without Ballast
Rear Tires	Two 14.9R28; 6;23 (160)	Two 14.9R28; 6;23 (160)
Ballast	None	None
- No., size, ply & psi (kPa)	Two 11.2R20; 6;23 (160)	Two 11.2R20; 6;23 (160)
- Liquid (total)	None	None
- Cast iron (total)	340 lb (155 kg)	None
Front Tires	Two 11.2R20; 6;23 (160)	Two 11.2R20; 6;23 (160)
Ballast	None	None
- No., size, ply & psi (kPa)	Two 11.2R20; 6;23 (160)	Two 11.2R20; 6;23 (160)
- Liquid (total)	None	None
- Cast Iron (total)	330 lb (150 kg)	None
Height of Drawbar	17.8 in (451 mm)	17.9 in (455 mm)
Static Weight with Operator --Rear	3165 lb (1435 kg)	2845 lb (1290 kg)
--Front	2555 lb (1160 kg)	2205 lb (1000 kg)
--Total	5720 lb (2595 kg)	5050 lb (2290 kg)

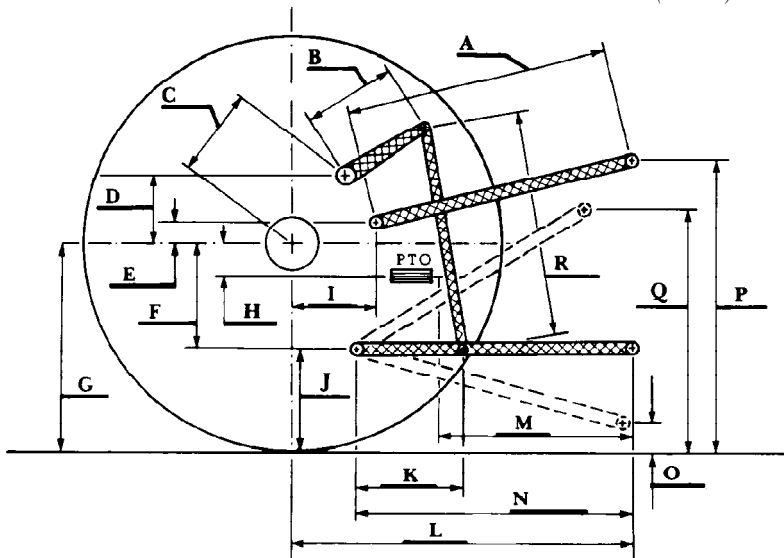
M.F. KOCHER
R.D. GRISSO
G.J. HOFFMAN
Board of Tractor Test Engineers

THREE POINT HITCH PERFORMANCE (OECD Static Test)

CATEGORY: II

Quick Attach: None

Maximum Force Exerted Through Whole Range:	3830 lbs	(17.0 kN)
i) Opening pressure of relief valve:	NA	
Sustained pressure with relief valve open:	2610 psi	(180 bar)
ii) Pump delivery rate at minimum pressure and rated engine speed:	12.5 GPM	(47.4 l/min)
iii) Pump delivery rate at maximum hydraulic power:	11.1 GPM	(42.0 l/min)
Delivery pressure:	2180 psi	(150 bar)
Power:	14.1 HP	(10.5 kW)



HITCH DIMENSIONS AS TESTED NO LOAD

	inch	mm
A	23.3	593
B	9.8	250
C	14.2	361
D	12.4	315
E	13.2	335
F	6.1	154
G	25.2	640
*H	1.2	30
I	15.4	390
J	19.1	486
K	15.7	400
L	38.7	983
M	21.4	543
N	31.5	800
O	7.9	200
P	43.1	1096
Q	35.8	910
R	23.2	590

* PTO is above rear axle

Agricultural Research Division
Institute of Agriculture and Natural Resources
University of Nebraska Lincoln
Darrell Nelson, Dean and Director