

University of Nebraska - Lincoln

DigitalCommons@University of Nebraska - Lincoln

---

Nebraska Tractor Tests

Tractor Test and Power Museum, The Lester F. Larsen

---

2012

## Nebraska Summary: S862 New Holland T6 120

Nebraska Tractor Test Laboratory

University of Nebraska-Lincoln, tractortestlab@unl.edu

Follow this and additional works at: <https://digitalcommons.unl.edu/tractormuseumlit>



Part of the Bioresource and Agricultural Engineering Commons, Energy Systems Commons, History of Science, Technology, and Medicine Commons, Other Mechanical Engineering Commons, Physical Sciences and Mathematics Commons, Science and Mathematics Education Commons, and the United States History Commons

---

Laboratory, Nebraska Tractor Test, "Nebraska Summary: S862 New Holland T6 120" (2012). *Nebraska Tractor Tests*. 3064.

<https://digitalcommons.unl.edu/tractormuseumlit/3064>

This Article is brought to you for free and open access by the Tractor Test and Power Museum, The Lester F. Larsen at DigitalCommons@University of Nebraska - Lincoln. It has been accepted for inclusion in Nebraska Tractor Tests by an authorized administrator of DigitalCommons@University of Nebraska - Lincoln.

# SUMMARY OF OECD TEST 2699—NEBRASKA SUMMARY 862

## NEW HOLLAND T6.120 DIESEL

### 16 SPEED

#### POWER TAKE-OFF PERFORMANCE

Power HP (kW)	Crank shaft speed rpm	Diesel Consumption		D.E.F. Consumption		Mean Atmospheric Conditions
		Gal/hr (l/h)	lb/hp.hr (kg/kW.h)	Hp.hr/gal (kW.h/l)	Gal/hr (l/h)	
<b>MAXIMUM POWER AND FUEL CONSUMPTION</b>						
<b>Rated Engine Speed—(PTO speed—1091 rpm)</b>						
94.7 (70.6)	2100	5.71 (21.62)	0.421 (0.256)	16.58 (3.27)	0.29 (1.08)	
<b>Standard Power Take-off Speed (1000 rpm)</b>						
102.2 (76.2)	1924	5.79 (21.92)	0.395 (0.240)	17.66 (3.48)	0.31 (1.17)	
<b>Maximum Power (1 hour)</b>						
105.0 (78.3)	1800	5.81 (21.98)	0.386 (0.235)	18.07 (3.56)	0.21 (0.81)	

#### VARYING POWER AND FUEL CONSUMPTION

94.7 (70.6)	2100	5.71 (21.62)	0.421 (0.256)	16.58 (3.27)	0.29 (1.08)	Air temperature
82.1 (61.2)	2143	5.21 (19.71)	0.442 (0.269)	15.79 (3.11)	0.24 (0.92)	75°F (24°C)
62.1 (46.3)	2161	4.38 (16.59)	0.492 (0.299)	14.16 (2.79)	0.17 (0.65)	Relative humidity
41.8 (31.2)	2178	3.44 (13.04)	0.574 (0.349)	12.13 (2.39)	0.10 (0.37)	59%
21.0 (15.7)	2199	2.52 (9.54)	0.838 (0.510)	8.31 (1.64)	0.04 (0.15)	Barometer
---	2215	1.83 (6.93)	---	---	---	29.3" Hg (99.3 kPa)

Maximum torque - 335 lb.-ft. (455 Nm) at 1500 rpm  
 Maximum torque rise - 41.6%  
 Torque rise at 1700 engine rpm - 34%  
 Power increase at 1800 engine rpm - 10%

#### DRAWBAR PERFORMANCE (Unballasted - Front Drive Engaged) FUEL CONSUMPTION CHARACTERISTICS

Power Hp (kW)	Drawbar pull lbs (kN)	Speed mph (km/h)	Crank- shaft speed rpm	Slip %	Fuel Consumption lb/hp.hr (kg/kW.h)	Temp. °F (°C)	cool- ing med	Air dry bulb	Barom. inch Hg (kPa)
<b>Maximum Power—9th Gear</b>									
75.2 (56.1)	4945 (22.0)	5.70 (9.18)	2102	3.7	0.501 (0.305)	13.91 (2.74)	189 (87)	84 (29)	28.9 (97.8)
<b>75% of Pull at Maximum Power—9th Gear</b>									
58.7 (43.8)	3710 (16.5)	5.94 (9.56)	2156	2.8	0.589 (0.358)	11.83 (2.33)	189 (87)	84 (29)	28.9 (97.8)
<b>50% of Pull at Maximum Power—9th Gear</b>									
39.8 (29.7)	2470 (11.0)	6.04 (9.72)	2173	1.9	0.742 (0.451)	9.39 (1.85)	189 (87)	84 (29)	28.9 (97.8)
<b>75% of Pull at Reduced Engine Speed—10th Gear</b>									
58.7 (43.8)	3685 (16.4)	5.97 (9.61)	1943	2.8	0.511 (0.311)	13.64 (2.69)	187 (86)	84 (29)	28.9 (97.8)
<b>50% of Pull at Reduced Engine Speed—10th Gear</b>									
39.7 (29.6)	2475 (11.0)	6.02 (9.69)	1940	1.9	0.611 (0.372)	11.41 (2.25)	187 (86)	84 (29)	28.9 (97.8)

**Location of tests:** Istituto per le Macchine Agricole e Movimento Terra 73, Strada delle Cacce 10135 Torino Italy

**Dates of tests:** May, 2012.

**Manufacturer:** CNH Europe Holding S.A. 24, Boulevard Royal L-2449 Luxembourg

**FUEL and OIL:** Fuel No. 2 Diesel Specific gravity converted to 60°/60°F (15°/15°C) 0.837 Fuel weight 6.97 lbs/gal (0.835 kg/l) Diesel Exhaust Fluid (DEF) 32% aqueous urea solution DEF weight 9.08 lbs/gal (1.091 kg/l) Oil SAE 10W30 API service classification CH-4 Transmission and hydraulic lubricant Akcela Nexplore fluid Front axle lubricant Akcela Nexplore fluid

**ENGINE:** Make CNH Diesel Type four cylinder vertical with turbocharger, air to air intercooler and SCR (selective catalyst reduction) exhaust treatment Serial No. 8731009 Crankshaft lengthwise Rated engine speed 2100 Bore and stroke 4.094" x 5.197" (104.0 mm x 132.0 mm) Compression ratio 17.5 to 1 Displacement 274 cu in (4485 ml) Starting system 12 volt Lubrication pressure Air cleaner two paper elements and aspirator Oil filter one full flow cartridge Oil cooler engine coolant heat exchanger for crankcase oil, radiator for hydraulic and transmission oil Fuel filter one paper element Muffler underhood Exhaust vertical Cooling medium temperature control thermostat and variable speed fan

**CHASSIS:** Type front wheel assist Serial No. ZBBD01001 Tread width rear 56.3" (1430 mm) to 84.0" (2134 mm) front 61.4" (1560 mm) to 88.8" (2256 mm) Wheelbase 94.0" (2387 mm) Hydraulic control system direct engine drive Transmission selective gear fixed ratio with partial (8) range operator controlled powershift Nominal travel speeds mph (km/h) first 1.35 (2.18) second 1.66 (2.67) third 2.02 (3.25) fourth 2.48 (3.99) fifth 3.18 (5.11) sixth 3.90 (6.27) seventh 4.74 (7.63) eighth 5.29 (8.51) ninth 5.82 (9.36) tenth 6.48 (10.43) eleventh 7.90 (12.71) twelfth 9.69 (15.59) thirteenth 12.41 (19.98) fourteenth 15.23 (24.51) fifteenth 18.55 (29.85) sixteenth 23.83 (38.35) reverse 1.34 (2.15), 1.64 (2.64), 1.99 (3.21), 2.45 (3.94), 3.14 (5.05), 3.85 (6.20), 4.69 (7.54), 5.23 (8.41), 5.75 (9.25), 6.41 (10.31), 7.80 (12.56), 9.55 (15.40), 12.27 (19.75), 15.06 (24.23), 18.33 (29.50), 22.48 (36.18)

**DRAWBAR PERFORMANCE**  
**(Unballasted - Front Drive Engaged)**  
**MAXIMUM POWER IN SELECTED GEARS**

Power Hp (kW)	Drawbar pull lbs (kN)	Speed mph (km/h)	Crank- shaft speed rpm	Slip %	Fuel lb/hp.hr (kg/kW.h)	Consumption Hp.hr/gal (kW.h/l)	Temp. <sup>o</sup> F(°C) cool- ing med	Air dry bulb	Barom. inch Hg (kPa)	
71.6 (53.4)	9710 (43.2)	2.77 (4.45)	2056	15.0	5th Gear 0.526 (0.320)		13.25 (2.61)	189 (87)	82 (28)	28.9 (97.8)
80.9 (60.3)	9015 (40.1)	3.36 (5.41)	1937	9.4	6th Gear 0.480 (0.292)		14.52 (2.86)	189 (87)	82 (28)	28.9 (97.8)
81.4 (60.7)	7825 (34.8)	3.90 (6.28)	1800	6.5	7th Gear 0.458 (0.278)		15.23 (3.00)	187 (86)	82 (28)	28.9 (97.8)
84.2 (62.8)	7150 (31.8)	4.42 (7.11)	1802	5.0	8th Gear 0.453 (0.275)		15.39 (3.03)	187 (86)	82 (28)	28.9 (98.0)
83.1 (62.0)	6405 (28.5)	4.87 (7.83)	1801	4.5	9th Gear 0.462 (0.281)		15.08 (2.97)	187 (86)	84 (29)	28.9 (97.8)
84.5 (63.0)	5800 (25.8)	5.46 (8.79)	1800	4.1	10th Gear 0.452 (0.275)		15.43 (3.04)	185 (85)	82 (28)	28.9 (98.0)
80.7 (60.2)	4520 (20.1)	6.70 (10.79)	1800	3.3	11th Gear 0.477 (0.290)		14.59 (2.87)	187 (86)	82 (28)	28.9 (98.0)
80.7 (60.2)	3665 (16.3)	8.26 (13.29)	1800	2.8	12th Gear 0.492 (0.299)		14.16 (2.79)	187 (86)	84 (29)	28.9 (97.8)

**Clutch** wet disc hydraulically actuated by foot pedal  
**Brakes** wet disc hydraulically actuated by two foot pedals that can be locked together **Steering** hydrostatic **Power take-off** 540 rpm at 1970 engine rpm or 1000 rpm at 1924 engine rpm **Unladen tractor mass** 11550 lb (5240 kg)

**REPAIRS AND ADJUSTMENTS:** No repairs or adjustments

**REMARKS:** All test results were determined from observed data obtained in accordance with official OECD test procedures. This tractor did not meet the manufacturer's three point lift claim of 13468 lbs (6109 kg). The performance figures on this summary were taken from a test conducted under the OECD Code II test procedure.

We, the undersigned, certify that this is a true summary of data from OECD Report No. **2699**, Nebraska Summary 862, January 17, 2013.

Roger M. Hoy  
 Director

M.R. Riley  
 P.J. Jasa  
 J.D. Luck  
 Board of Tractor Test Engineers

TRACTOR SOUND LEVEL WITH CAB	Front Wheel Drive	
	Disengaged dB(A)	Engaged dB(A)
At no load in 7th gear	70.8	71.3
Bystander	--	--

**TIRES AND WEIGHT**

**Rear tires** - No., size, ply & psi (kPa)  
**Front tires** - No., size, ply & psi (kPa)  
**Height of Drawbar**  
**Static Weight with operator**- Rear  
 - Front  
 - Total

**Tested Without Ballast**

Two 600/65R38; \*\*, 12 (80)  
 Two 480/65R28; \*\*, 12 (80)  
 20.7 in (525 mm)  
 6890 lb (3125 kg)  
 4830 lb (2190 kg)  
 11720 lb (5315 kg)

## HYDRAULIC PERFORMANCE

CATEGORY: II

Quick Attach: None

OECD Static test

Maximum force exerted through whole range: 6720 lbs (29.9 kN) (80 mm lift cylinders)

i) Sustained pressure of the open relief valve: 2975 psi (205 bar)

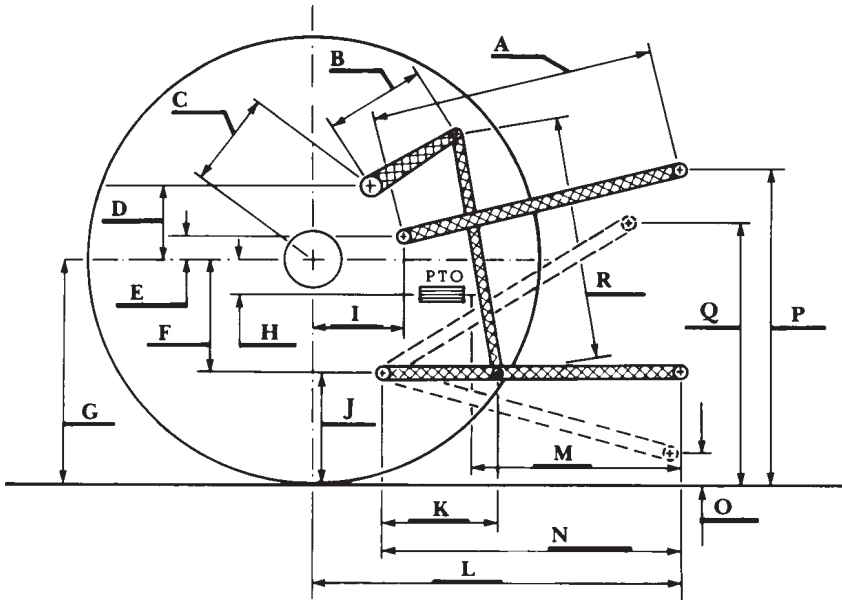
ii) Pump delivery rate at minimum pressure: 19.8 GPM (75.0 l/min)

iii) Pump delivery rate at maximum

hydraulic power: 18.2 GPM (68.8 l/min)

Delivery pressure: 2465 psi (170 bar)

Power: 26.2 HP (19.5 kW)



**HITCH DIMENSIONS AS TESTED—NO LOAD**

	inch	mm
A	27.6	700
B	12.2	310
C	15.6	395
D	14.6	370
E	7.9	200
F	9.3	235
G	32.5	825
H	1.0	25
I	16.9	430
J	23.2	590
K	19.9	505
L	45.0	1142
M	23.1	587
N	38.3	974
O	7.9	200
P	47.2	1200
Q	34.8	884
R	32.9	835