

University of Nebraska - Lincoln

DigitalCommons@University of Nebraska - Lincoln

Nebraska Tractor Tests

Tractor Test and Power Museum, The Lester F.
Larsen

2012

Nebraska Summary: S903 Massey Ferguson 7626

Nebraska Tractor Test Laboratory

University of Nebraska-Lincoln, tractortestlab@unl.edu

Follow this and additional works at: <https://digitalcommons.unl.edu/tractormuseumlit>



Part of the [Energy Systems Commons](#), [History of Science, Technology, and Medicine Commons](#), [Other Mechanical Engineering Commons](#), [Physical Sciences and Mathematics Commons](#), [Science and Mathematics Education Commons](#), and the [United States History Commons](#)

Laboratory, Nebraska Tractor Test, "Nebraska Summary: S903 Massey Ferguson 7626" (2012). *Nebraska Tractor Tests*. 3029.

<https://digitalcommons.unl.edu/tractormuseumlit/3029>

This Article is brought to you for free and open access by the Tractor Test and Power Museum, The Lester F. Larsen at DigitalCommons@University of Nebraska - Lincoln. It has been accepted for inclusion in Nebraska Tractor Tests by an authorized administrator of DigitalCommons@University of Nebraska - Lincoln.

SUMMARY OF OECD TEST 2755-NEBRASKA SUMMARY 903 MASSEY FERGUSON 7626 DYNA 6 DIESEL 24 SPEED

POWER TAKE-OFF PERFORMANCE

Power HP (kW)	Crank shaft speed rpm	Diesel Consumption Gal/hr (l/h)	lb/hp.hr (kg/kW.h)	Hp.hr/gal (kW.h/l)	D.E.F. Consumption Gal/hr (l/h)	Mean Atmospheric Conditions
MAXIMUM POWER AND FUEL CONSUMPTION						
Rated Engine Speed—(PTO speed—1086 rpm)						
205.8 (153.5)	2096	11.81 (44.70)	0.401 (0.244)	17.43 (3.43)	0.46 (1.77)	
Maximum Power (1 hour)						
233.9 (174.4)	1948	12.71 (48.09)	0.379 (0.230)	18.41 (3.63)	0.68 (2.59)	
Standard Power Take-off Speed (1000 rpm)						
231.9 (172.9)	1930	12.50 (47.31)	0.376 (0.229)	18.55 (3.65)	0.65 (2.47)	

VARYING POWER AND FUEL CONSUMPTION

205.8 (153.5)	2096	11.81 (44.70)	0.401 (0.244)	17.43 (3.43)	0.46 (1.77)	Air temperature
177.3 (132.2)	2123	10.30 (38.99)	0.405 (0.247)	17.21 (3.39)	0.46 (1.74)	73°F (23°C)
133.2 (99.3)	2134	8.01 (30.32)	0.420 (0.255)	16.62 (3.27)	0.34 (1.27)	Relative humidity
89.3 (66.6)	2137	6.10 (23.10)	0.477 (0.290)	14.63 (2.88)	0.25 (0.95)	46%
44.7 (33.3)	2147	4.06 (15.37)	0.633 (0.385)	11.01 (2.17)	0.15 (0.56)	Barometer
--	2155	2.23 (8.43)	--	--	--	30.0" Hg (101.5 kPa)

Maximum torque - 724.6 lb.-ft. (982.4 Nm) at 1397 rpm
 Maximum torque rise - 40.5%
 Torque rise at 1700 engine rpm - 29%
 Power increase at 1948 engine rpm - 13.6%

DRAWBAR PERFORMANCE (Unballasted - Front Drive Engaged) FUEL CONSUMPTION CHARACTERISTICS

Power Hp (kW)	Drawbar pull lbs (kN)	Speed mph (km/h)	Crank- shaft speed rpm	Slip %	Fuel Consumption lb/hp.hr (kg/kW.h)	Hp.hr/gal (kW.h/l)	Temp. °F (°C) cool- ing med	Air dry bulb	Barom. inch Hg (kPa)
Maximum Power—11th(3A) Gear									
177.8 (132.6)	13515 (60.1)	4.93 (7.94)	2096	5.5	0.442 (0.269)	15.74 (3.10)	183 (85)	39 (4)	30.1 (102.0)
75% of Pull at Maximum Power—11th(3A) Gear									
142.1 (106.0)	10370 (46.1)	5.14 (8.27)	2128	3.4	0.432 (0.263)	16.09 (3.17)	180 (85)	39 (4)	30.1 (102.0)
50% of Pull at Maximum Power—11th(3A) Gear									
96.5 (72.0)	6870 (30.6)	5.27 (8.48)	2140	2.1	0.473 (0.287)	14.72 (2.90)	180 (83)	39 (4)	30.1 (102.0)
75% of Pull at Reduced Engine Speed—13th(3B) Gear									
143.4 (106.9)	10360 (46.1)	5.19 (8.35)	1786	3.3	0.388 (0.236)	17.92 (3.53)	183 (86)	39 (4)	30.1 (102.0)
50% of Pull at Reduced Engine Speed—13th(3B) Gear									
95.3 (71.1)	6740 (30.0)	5.30 (8.53)	1796	2.0	0.422 (0.257)	16.50 (3.25)	181 (84)	39 (4)	30.1 (102.0)

Location of tests: IRSTEA, Centre d'Antony, 1 rue Pierre-Gilles de Gennes CS 10030 Antony, 92163, Cedex, France

Dates of tests: October - November, 2012

Manufacturer: AGCO S.A. BP 307, Avenue Blaise Pascal, 60026 Beauvais, France

FUEL and OIL: Fuel No. 2 Diesel **Specific gravity converted to 60°/60°F (15°/15°C)** 0.838 **Fuel weight** 6.98 lbs/gal (0.836 kg/l) **Diesel Exhaust Fluid (DEF)** 32% aqueous urea solution **DEF weight** 9.10 lbs/gal (1.091 kg/l) **Oil SAE** 15W40 **API service classification** CJ-4 **Transmission and hydraulic lubricant** BP Terrac Tractan 9 15W/40 **Front axle lubricant** BP Terrac Tractan 9 15W/40

ENGINE: Make Sisu AGCO Power Diesel **Type** six cylinder vertical with turbocharger and air to air intercooler and SCR (selective catalyst reduction) exhaust treatment **Serial No.** X00365 **Crankshaft** lengthwise **Rated engine speed** 2100 **Bore and stroke** 4.252" x 5.276" (108.0 mm x 134.0 mm) **Compression ratio** 17.8 to 1 **Displacement** 449 cu in (7365 ml) **Starting system** 12 volt **Lubrication** pressure **Air cleaner** two paper elements **Oil filter** one full flow cartridge **Oil cooler** engine coolant heat exchanger for crankcase oil, radiator for hydraulic and transmission oil **Fuel filter** three paper cartridges **Muffler** vertical **Cooling medium** **temperature control** thermostat and variable speed fan

CHASSIS: **Type** front wheel assist **Serial No.** B 193 047 **Tread width** rear 52.8" (1340 mm) to 87.8" (2230 mm) front 52.8" (1340 mm) to 87.8" (2230 mm) **Wheelbase** 117.8" (2993 mm) **Hydraulic control system** direct engine drive **Transmission** selective gear fixed ratio with partial (6) range operator controlled powershift **Nominal travel speeds mph (km/h)** first 1.01 (1.62) second 1.21 (1.95) third 1.42 (2.29) fourth 1.72 (2.76) fifth 2.01 (3.24) sixth 2.42 (3.90) seventh 2.73 (4.39) eighth 3.27 (5.27) ninth 3.85 (6.19) tenth 4.63 (7.45) eleventh 5.22 (8.40) twelfth 5.44 (8.76) thirteenth 6.28 (10.10) fourteenth 6.55 (10.54) fifteenth 7.37 (11.86) sixteenth 8.87 (14.27) seventeenth 10.43 (16.78) eighteenth 12.54 (20.18) nineteenth 14.49 (23.32) twentieth 17.42 (28.04) twenty-first 20.45 (32.91) twenty-second 24.61 (39.60) twenty-third 24.86 (40.00) twenty-fourth 24.86 (40.00) electronically limited reverse 1.01 (1.62), 1.21 (1.95), 1.42 (2.29), 1.72 (2.76), 2.01 (3.24), 2.42 (3.90), 2.73 (4.39), 3.27 (5.27), 3.85 (6.19), 4.63 (7.45), 5.22 (8.40), 5.44 (8.76), 6.28 (10.10), 6.55 (10.54), 7.37 (11.86), 8.87 (14.27) 10.43 (16.78), 12.54 (20.18), 14.49 (23.32), 17.42 (28.04), 20.45 (32.91), 24.61 (39.60), 24.86 (40.00), 24.86 (40.00) electronically limited

DRAWBAR PERFORMANCE
(Unballasted - Front Drive Engaged)
MAXIMUM POWER IN SELECTED GEARS

Power Hp (kW)	Drawbar pull lbs (kN)	Speed mph (km/h)	Crank- shaft speed rpm	Slip %	Fuel Consumption lb/hp.hr (kg/kW.h)	Consumption Hp.hr/gal (kW.h/l)	Temp. °F(°C) cool- ing med	Air dry bulb	Barom. inch Hg (kPa)
4th(1D) Gear									
72.1 (53.8)	17760 (79.0)	1.52 (2.45)	2125	13.0	0.542 (0.329)	12.84 (2.53)	180 (82)	39 (4)	30.1 (102.0)
5th(1E) Gear									
85.4 (63.7)	17290 (76.9)	1.85 (2.98)	2123	10.2	0.484 (0.294)	14.37 (2.83)	181 (83)	39 (4)	30.1 (102.0)
6th(1F) Gear									
99.1 (73.9)	16860 (75.0)	2.20 (3.55)	2133	10.0	0.478 (0.291)	14.57 (2.87)	178 (81)	37 (3)	30.1 (102.0)
7th(2A) Gear									
114.0 (85.0)	16860 (75.0)	2.54 (4.08)	2129	9.0	0.459 (0.279)	15.18 (2.99)	174 (79)	37 (3)	30.1 (102.0)
8th(2B) Gear									
134.1 (100.0)	16320 (72.6)	3.08 (4.96)	2124	8.6	0.448 (0.273)	15.53 (3.06)	178 (81)	37 (3)	30.1 (102.0)
9th(2C) Gear									
159.7 (119.1)	16725 (74.4)	3.58 (5.76)	2119	9.1	0.433 (0.263)	16.09 (3.17)	183 (84)	39 (4)	30.1 (102.0)
10th(2D) Gear									
178.1 (132.8)	16190 (72.0)	4.13 (6.64)	2018	6.6	0.404 (0.246)	17.21 (3.39)	185 (85)	39 (4)	30.1 (102.0)
11th(3A) Gear									
197.4 (147.2)	16410 (73.0)	4.51 (7.26)	1957	6.8	0.409 (0.248)	17.03 (3.35)	198 (92)	37 (3)	30.1 (102.0)
12th(2E) Gear									
197.9 (147.6)	15835 (70.4)	4.69 (7.55)	1952	6.4	0.408 (0.248)	17.03 (3.35)	190 (88)	39 (4)	30.1 (102.0)
13th(3B) Gear									
208.1 (155.2)	14050 (62.5)	5.56 (8.94)	1950	5.6	0.388 (0.236)	17.92 (3.53)	192 (89)	39 (4)	30.1 (102.0)
14th(2F) Gear									
202.4 (150.9)	13115 (58.4)	5.79 (9.31)	1954	5.4	0.408 (0.248)	17.06 (3.36)	192 (89)	39 (4)	30.1 (102.0)
15th(3C) Gear									
206.8 (154.2)	11715 (52.1)	6.62 (10.65)	1956	4.3	0.392 (0.238)	17.77 (3.50)	192 (89)	39 (4)	30.1 (102.0)
16th(3D) Gear									
204.8 (152.7)	9550 (42.5)	8.04 (12.94)	1964	3.6	0.396 (0.241)	17.56 (3.46)	187 (86)	39 (4)	30.1 (102.0)
17th(3E) Gear									
192.3 (143.4)	7660 (34.1)	9.41 (15.14)	1948	2.9	0.425 (0.258)	16.40 (3.23)	198 (92)	39 (4)	30.1 (102.0)

Clutch multiple wet disc operated by foot pedal
Brakes multiple wet disc hydraulically operated by two foot pedals that can be locked together
Steering hydrostatic **Power take-off** 540 rpm at 1890 engine rpm or 1000 rpm at 1930 engine rpm
Unladen tractor mass 19145 lb (8685 kg)

REPAIRS AND ADJUSTMENTS: No repairs or adjustments.

REMARKS: All test results were determined from observed data obtained in accordance with official OECD test procedures. This tractor did not meet the manufacturer's three point hitch lift claim of 14000 lbs (6350 kg) nor remote hydraulic flow claim of 29 gpm (110 lpm) nor cab noise level claim of 69 dB(A). The manufacturer's remote hydraulic flow claim of 39 GPM (147 lpm) for optional pump was not verified. The performance figures on this summary were taken from a test conducted under the OECD Code 2 test procedure.

We, the undersigned, certify that this is a true summary of data from OECD Report No. **2755**, Nebraska Summary 903, January 24, 2014.

Roger M. Hoy
 Director

M.F. Kocher
 J.D. Luck
 P.J. Jasa
 Board of Tractor Test Engineers

TRACTOR SOUND LEVEL WITH CAB	Front wheel drive	
	Engaged dB(A)	Disengaged dB(A)
At no load in 10th (2D) gear	70.0	70.0
Bystander		--

TIRES, BALLAST AND WEIGHT

Rear Tires - No., size, ply & psi(kPa)
Front Tires - No., size, ply & psi(kPa)
Height of Drawbar
Static Weight with operator - Rear
 - Front
 - Total

Tested without ballast

Two 650/65R42;**,14(100)
 Two 540/65R30;**,16(110)
 22.4 in (570 mm)
 10515 lb (4770 kg)
 8795 lb (3990 kg)
 19310 lb (8760 kg)

HYDRAULIC PERFORMANCE

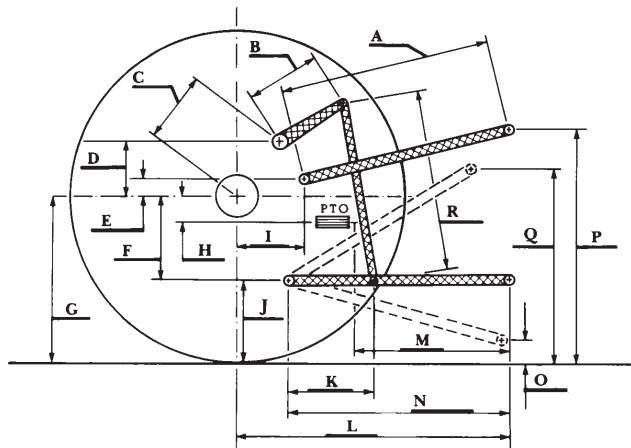
CATEGORY: III

Quick Attach: None

OECD Static test

- Maximum force exerted through whole range: 13670 lbs (60.8 kN)
- i) Sustained pressure of the open relief valve: 2770 psi (191 bar)
two outlet sets combined
- ii) Pump delivery rate at minimum pressure: 28.7 GPM (108.7 l/min)
- iii) Pump delivery rate at maximum
 hydraulic power: 25.9 GPM (98.2 l/min)
 Delivery pressure: 2235 psi (154 bar)
 Power: 33.8 HP (25.2 kW)
single outlet set
- ii) Pump delivery rate at minimum pressure: 28.7 GPM (108.6 l/min)
- iii) Pump delivery rate at maximum
 hydraulic power: 26.0 GPM (98.3 l/min)
 Delivery pressure: 1915 psi (132 bar)
 Power: 29.0 HP (21.7 kW)

HITCH DIMENSIONS AS TESTED—NO LOAD



	inch	mm
A	30.3	770
B	15.7	400
C	20.7	525
D	19.1	485
E	8.3	210
F	12.2	310
G	36.4	925
H	2.0	50
I	17.7	450
J	24.2	615
K	21.8	554
L	47.2	1200
M	22.0	560
N	37.1	942
O	11.1	283
P	51.2	1300
Q	41.6	1057
R	36.3	923