

1950

## CC109 The European Corn Borer Recognition Sheet

L. F. Berwick

Follow this and additional works at: <http://digitalcommons.unl.edu/extensionhist>

---

Berwick, L. F., "CC109 The European Corn Borer Recognition Sheet" (1950). *Historical Materials from University of Nebraska-Lincoln Extension*. 3055.

<http://digitalcommons.unl.edu/extensionhist/3055>

This Article is brought to you for free and open access by the Extension at DigitalCommons@University of Nebraska - Lincoln. It has been accepted for inclusion in Historical Materials from University of Nebraska-Lincoln Extension by an authorized administrator of DigitalCommons@University of Nebraska - Lincoln.

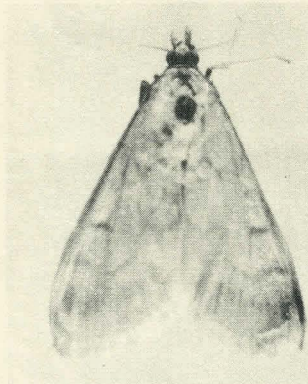
AGRI  
S  
544.3 1950  
N2C33x  
cc109

THE EUROPEAN CORN BORER  
Recognition Sheet

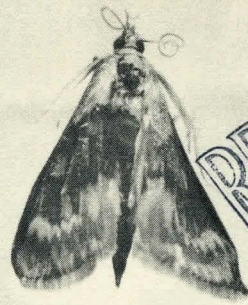
C.C. 109  
UNIV. OF NEBRASKA  
LINCOLN

L. F. Bewick

JUN 3 1988



Adult female

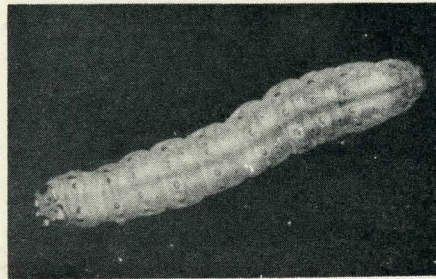


Adult male

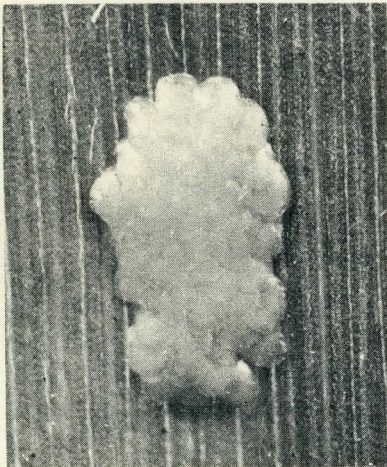
RECEIVED  
DEC 4 1970  
COLLEGE OF AGRICULTURE  
LIBRARY



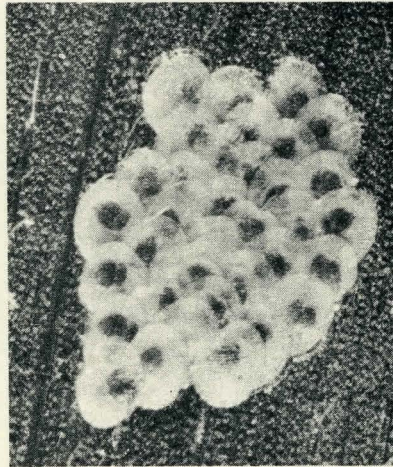
Pupa in corn stalk



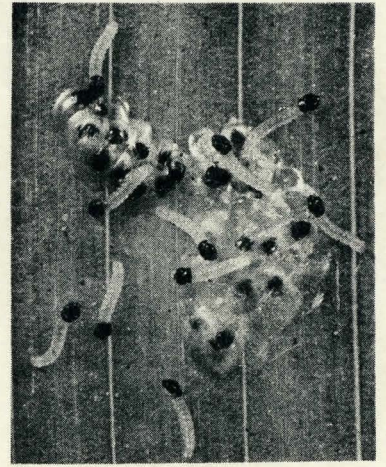
Full grown larva



Eggs, freshly laid



Eggs, just before hatch



Hatching larvae

The adult female moths are pale yellowish brown with irregular dark wavy bands across the wings. The male moth is much darker and marked with olive brown. Each has a wing expanse of about one inch. Active at night.

Larvae are flesh colored with rows of dark brown round spots. They grow to a length of about one inch. Found only in stalks after first few days.

Egg masses usually one-fourth inch or less in diameter and contain 5 to 50 eggs.