

University of Nebraska - Lincoln

DigitalCommons@University of Nebraska - Lincoln

---

Historical Materials from University of Nebraska-  
Lincoln Extension

Extension

---

1963

## EC6146 How Should Farm Ponds be Managed?

Harold Gilman

Follow this and additional works at: <http://digitalcommons.unl.edu/extensionhist>

---

Gilman, Harold, "EC6146 How Should Farm Ponds be Managed?" (1963). *Historical Materials from University of Nebraska-Lincoln Extension*. 3598.

<http://digitalcommons.unl.edu/extensionhist/3598>

This Article is brought to you for free and open access by the Extension at DigitalCommons@University of Nebraska - Lincoln. It has been accepted for inclusion in Historical Materials from University of Nebraska-Lincoln Extension by an authorized administrator of DigitalCommons@University of Nebraska - Lincoln.



Terrace and contour farm all land in the drainage area above dam.

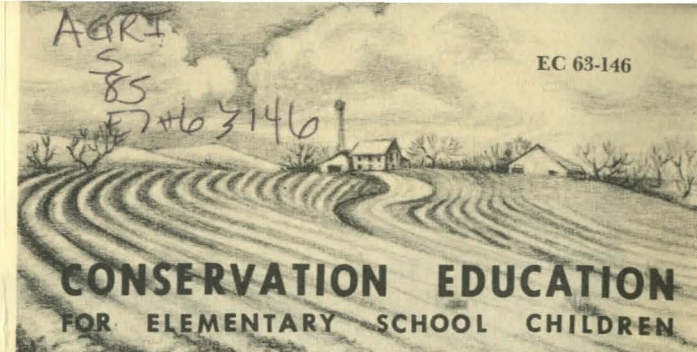


Land that is too steep to be safely cultivated should be seeded to grass in the drainage area above the dam.

### Conservation Education Publications

The following circulars form the conservation education series.

- EC 63-139 What Causes Soil Erosion?
- EC 63-140 Kinds of Erosion
- EC 63-141 What Causes Gullies?
- EC 63-142 Can Gullies Be Controlled?
- EC 63-143 What Is a Terrace?
- EC 63-144 What Is a Grassed Waterway?
- EC 63-145 What Is Wind Strip Cropping?
- EC 63-146 How Should Farm Ponds Be Managed?
- EC 63-147 Conservation Practices in Eastern Nebraska
- EC 63-148 Conservation Practices in Western Nebraska
- EC 63-149 Conservation Practices in the Sandhills
- EC 63-150 Shelterbelts?
- EC 63-151 Who Helps Nebraskans With Soil and Water Conservation?
- EC 63-152 Grass in Soil and Water Conservation
- EC 63-153 Stubble Mulch
- EC 63-154 Conservation Rotation
- EC 63-155 Bench Leveling



### How Should Farm Ponds Be Managed?

By Harold H. Gilman

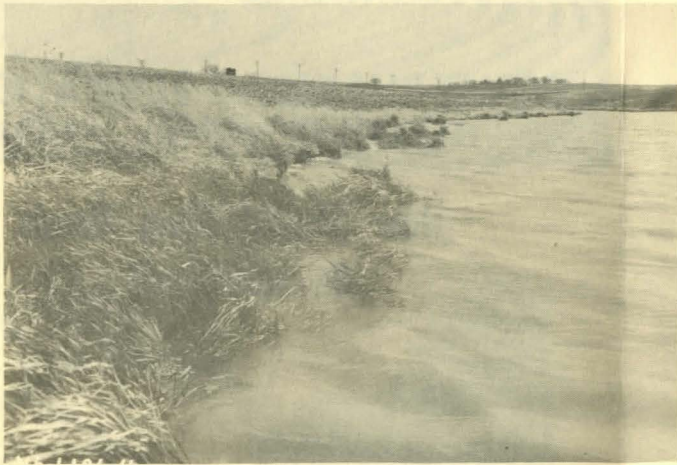


### Where Should a Pond Be Built?

1. Preferably in a pasture or meadow.
2. Where no silt will wash into the pond.

EXTENSION SERVICE  
UNIVERSITY OF NEBRASKA COLLEGE OF AGRICULTURE  
AND U. S. DEPARTMENT OF AGRICULTURE  
COOPERATING  
E. F. FROLIK, DEAN      E. W. JANIKE, DIRECTOR





Shore line should be seeded to reed canarygrass.

## How Should the Farm Pond Be Managed?

1. The farm pond should be fenced to keep livestock out.
2. The dam and shore line should be seeded to grass, including Reeds Canary grass.
3. All burrowing rodents should be removed by trapping.
4. If livestock water is needed put a pipe through the dam to a watertank below it.

## Advantages of Having Clean Water in a Farm Pond

1. Can be used for swimming.
2. Can be used for fishing and hunting.
3. Can be used as a picnic area.
4. Water can be used to irrigate farm gardens.
5. Water can be used for livestock.



For a good farm pond, a good conservation program must first be applied on the land.