

1963

## EC63-147 Conservation Practices in Eastern Nebraska

Harold Gilman

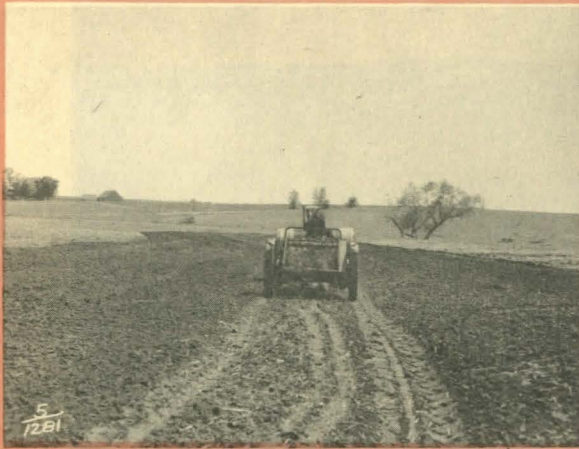
Follow this and additional works at: <http://digitalcommons.unl.edu/extensionhist>

---

Gilman, Harold, "EC63-147 Conservation Practices in Eastern Nebraska" (1963). *Historical Materials from University of Nebraska-Lincoln Extension*. 3597.

<http://digitalcommons.unl.edu/extensionhist/3597>

This Article is brought to you for free and open access by the Extension at DigitalCommons@University of Nebraska - Lincoln. It has been accepted for inclusion in Historical Materials from University of Nebraska-Lincoln Extension by an authorized administrator of DigitalCommons@University of Nebraska - Lincoln.

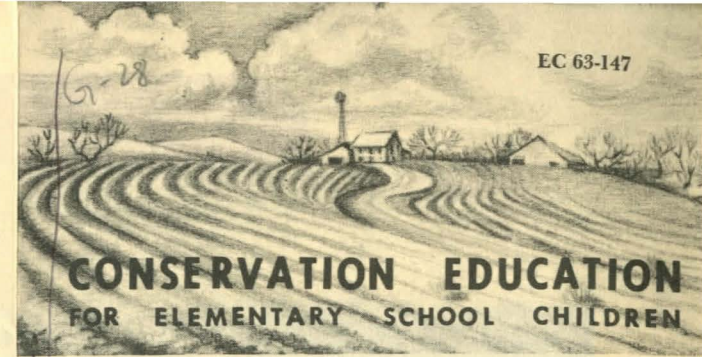


Fertilizer applied to the land

### Conservation Education Publications

The following circulars form the conservation education series.

- EC 63-139 What Causes Soil Erosion?
- EC 63-140 Kinds of Erosion
- EC 63-141 What Causes Gullies?
- EC 63-142 Can Gullies Be Controlled?
- EC 63-143 What Is a Terrace?
- EC 63-144 What Is a Grassed Waterway?
- EC 63-145 What Is Wind Strip Cropping?
- EC 63-146 How Should Farm Ponds Be Managed?
- EC 63-147 Conservation Practices in Eastern Nebraska
- EC 63-148 Conservation Practices in Western Nebraska
- EC 63-149 Conservation Practices in the Sandhills
- EC 63-150 Shelterbelts?
- EC 63-151 Who Helps Nebraskans With Soil and Water Conservation?
- EC 63-152 Grass in Soil and Water Conservation
- EC 63-153 Stubble Mulch
- EC 63-154 Conservation Rotation
- EC 63-155 Bench Leveling



### Conservation Practices in Eastern Nebraska

By Harold H. Gilman

AGRI  
S  
85  
E7  
463-147



Terraces



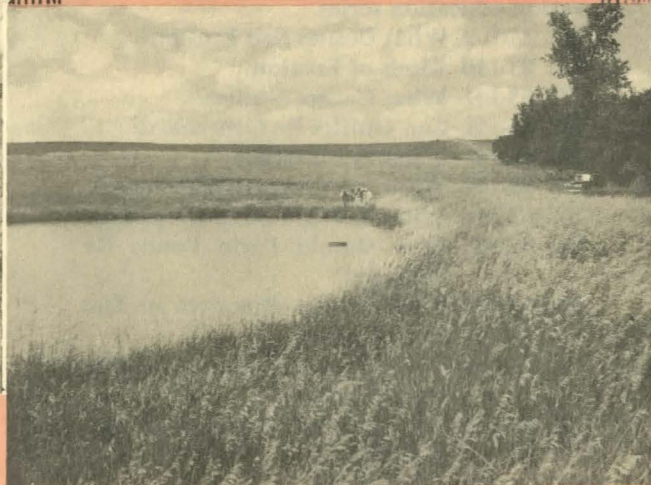
Grassed waterways



Conservation land treatment and a rural church for a stable, prosperous community.



**Contour farming**



**Erosion control dam**



**Conservation cropping system**



**Farmstead windbreak**



**Seeding eroded land to grass**



**Good pasture management**