

1963

## EC63-148 Conservation Practices in Western Nebraska

Harold Gilman

Follow this and additional works at: <http://digitalcommons.unl.edu/extensionhist>

---

Gilman, Harold, "EC63-148 Conservation Practices in Western Nebraska" (1963). *Historical Materials from University of Nebraska-Lincoln Extension*. 3596.

<http://digitalcommons.unl.edu/extensionhist/3596>

This Article is brought to you for free and open access by the Extension at DigitalCommons@University of Nebraska - Lincoln. It has been accepted for inclusion in Historical Materials from University of Nebraska-Lincoln Extension by an authorized administrator of DigitalCommons@University of Nebraska - Lincoln.



A view of soil conservation farming.

Maximum use of available moisture for crop production and control of wind and water erosion are the principal conservation problems on cultivated dryland areas. Summer fallowing in alternate years to conserve moisture is a standard practice on wheat land.

Dryland crops grown in western Nebraska include winter wheat and smaller acreages of oats, barley, rye, sorghums, millet and safflower. Livestock raising is a major enterprise in parts of western Nebraska.

Irrigated crops include alfalfa, sweet-clover, sugar beets, dry beans, corn, small grain, grasses, sorghum, potatoes and safflower.

### Conservation Education Publications

The following circulars form the conservation education series.

- EC 63-139 What Causes Soil Erosion?
- EC 63-140 Kinds of Erosion
- EC 63-141 What Causes Gullies?
- EC 63-142 Can Gullies Be Controlled?
- EC 63-143 What Is a Terrace?
- EC 63-144 What Is a Grassed Waterway?
- EC 63-145 What Is Wind Strip Cropping?
- EC 63-146 How Should Farm Ponds Be Managed?
- EC 63-147 Conservation Practices in Eastern Nebraska
- EC 63-148 Conservation Practices in Western Nebraska
- EC 63-149 Conservation Practices in the Sandhills
- EC 63-150 Shelterbelts?
- EC 63-151 Who Helps Nebraskans With Soil and Water Conservation?
- EC 63-152 Grass in Soil and Water Conservation
- EC 63-153 Stubble Mulch
- EC 63-154 Conservation Rotation
- EC 63-155 Bench Leveling

CVT  
Vert.  
File  
S  
85  
E. 7  
No. 148

EC 63-148

## CONSERVATION EDUCATION FOR ELEMENTARY SCHOOL CHILDREN

### Conservation Practices in Western Nebraska

By Harold H. Gilman



Level terraces



Stubble mulch farming



Field shelterbelts

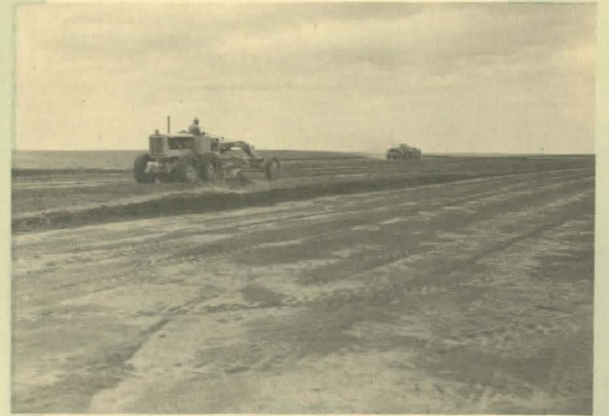
EXTENSION SERVICE  
UNIVERSITY OF NEBRASKA COLLEGE OF AGRICULTURE  
AND U. S. DEPARTMENT OF AGRICULTURE  
COOPERATING  
E. F. FROLIK, DEAN E. W. JANIKE, DIRECTOR



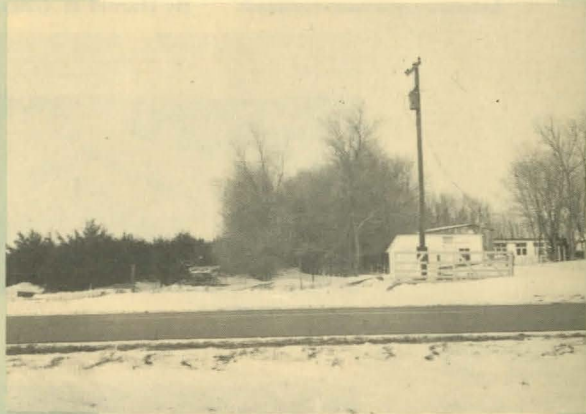
Livestock water dam



Conservation irrigation



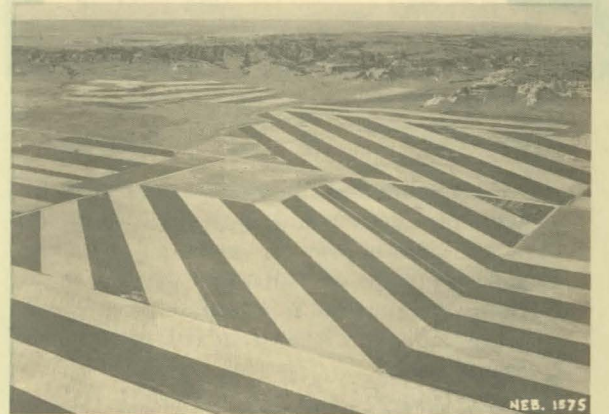
Land leveling



Farmstead windbreaks



Seeding eroded land to grass



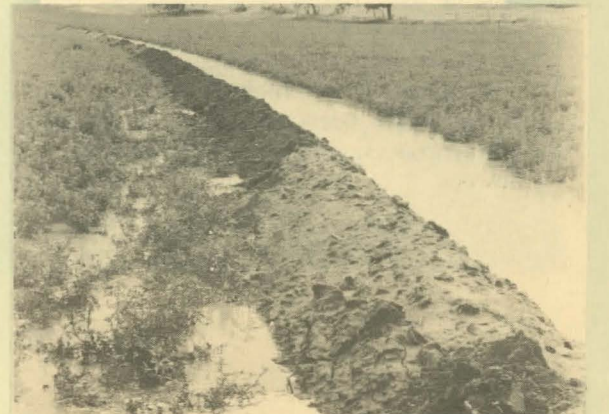
Wind strip cropping



Bench leveling



Proper range use



Water spreading