

1969

EC69-1833 Lawn Diseases in the Midwest

J. L. Weihing

M. C. Shurtleff

R. E. Partyka

Follow this and additional works at: <http://digitalcommons.unl.edu/extensionhist>

Weihing, J. L.; Shurtleff, M. C.; and Partyka, R. E., "EC69-1833 Lawn Diseases in the Midwest" (1969). *Historical Materials from University of Nebraska-Lincoln Extension*. 3952.

<http://digitalcommons.unl.edu/extensionhist/3952>

This Article is brought to you for free and open access by the Extension at DigitalCommons@University of Nebraska - Lincoln. It has been accepted for inclusion in Historical Materials from University of Nebraska-Lincoln Extension by an authorized administrator of DigitalCommons@University of Nebraska - Lincoln.

AGRI
85
E7

E.C. 69-1833

North Central Regional Extension Publication No. 12

#69-1833
c.1

Lawn Diseases

in the MIDWEST



RECEIVED
DEC 10 1970

COLLEGE OF AGRICULTURE
LIBRARY



Agricultural Extension Services of Illinois, Indiana, Iowa, Kansas, Michigan, Minnesota, Missouri, Nebraska, North Dakota, Ohio, South Dakota, Wisconsin and the United States Department of Agriculture cooperating.

EC 69-1833

Extension Service
University of Nebraska College of Agriculture
And U.S. Department of Agriculture
Cooperating
E. F. Frolik, Dean; J. L. Adams, Director

KEY TO DISEASES

Symptoms	Diseases	Page
Irregular pattern of dead grass.....	Melting-out, Dying-out, Fading-out	4
Round pattern of dead grass		
Patches from 1 inch to 3 feet in diameter.....	Brown patch	7
Patches 1-4 inches in diameter.....	Dollar spot	8
	Dog injury	17
Scattered light green patches.....	Fursarium blight	9
Dead patches often following melting snow.....	Snow mold	10
Surface of grass blades become powdery		
Reddish-brown to orange.....	Rust	11
Milky-white.....	Powdery mildew	11
Bluish-gray to black.....	Slime molds	13
Black powder in stripes.....	Stripe and flag smut.....	12
Seedlings wilt and die (thin stand).....	Damping-off, seed rot.....	15
Toadstools, mushrooms, or puffballs in the lawn.....	Toadstools, mushrooms, puffballs	13
Rings or arcs in lawn; toadstools occasionally appear in the ring.....	Fairy ring	14
Other causes of poor turf.....	Nematodes	16
	Insect injury	16
	Chemical burn	16
	Chlorosis or yellowing.....	16
	Buried debris	17
	Compacted areas	17
	Algae, green scum.....	17
	Moss	17

Pictures on pages 4, 8, 11, 12, 13 and 15 used by permission of the Government Printing Office,
 United States Department of Agriculture.
 Picture on page 7, courtesy of The Morton Chemical Co.
 Pictures on pages 10 and 14, courtesy of Mallinckrodt Chemical Co.
 Picture on page 12, courtesy of The Upjohn Chemical Co.
 Cover photo courtesy Better Lawn Institute.

Issued June 1961, 67,000
 Reprinted April 1962, 36,500
 Revised June 1963, 51,000
 Reprinted June 1964, 23,000
 Revised May 1966, 83,000
 Reprinted April 1968, 20,000
 Revised September 1969, 36,000

LAWN DISEASES IN THE MIDWEST

by

J. L. Weihing, M. C. Shurtleff and R. E. Partyka¹

INTRODUCTION

The amount of time and money spent on lawns each year is staggering. In the Midwest alone there is probably more than a billion dollar investment in lawns and a likely 300-500 million dollars spent annually for maintenance. Lawns are big business and compare in economic importance with our major Midwest field crops.

PREVENTIVE DISEASE CONTROL

The home owner is as proud of a beautiful lawn as he is of a new carpet. After his friends and neighbors have heaped upon him praise and admiration for his skill in growing such a lawn, disease may suddenly devastate large areas. This can be most discouraging.

There is no secret formula for growing a good lawn. Lawn grasses are simply living organisms that need sunlight, moisture, and nutrients the same as do all plants. Diseases occur in all plants. Following are some facts about diseases and general cultural practices which will help prevent them.

1. Fungi cause most of the serious diseases in lawns. These organisms usually produce seeds (technically called spores) that are spread by wind, water, mowers, infected grass clippings and numerous other ways.

2. These fungus "seeds" need moisture and proper air temperature before they can cause infection. Diseases of lawns are, therefore, most common and harmful during wet, humid seasons. Although tempera-

ture is virtually impossible to control, diseases may be started easily by too frequent watering during dry summers.

3. The more often grass is wet and the longer it remains wet the greater will be the chance of a disease problem. During dry periods, enough water should be applied at one time to provide adequate moisture for a week. This means the soil should be wet at least six inches down after watering.

4. Practically all parasitic fungi of grasses can become established in the damp mulch from clippings. Here they flourish and attack healthy grass growing through the mulch. To guard against this, do not allow clippings to accumulate more than $\frac{1}{4}$ inch deep.

5. Do not clip upright grasses such as Kentucky bluegrass (or fescues) too closely—clipping to 2" is recommended. Creeping grasses such as bentgrass and zoysia may be clipped $\frac{1}{2}$ inch or less.

6. Mow grass frequently, so that no more than one-third of the leaf surface is removed at one time.

7. Areas about the lawn where air movement is restricted can be problem spots. Thinning or removal of surrounding shrubs and trees allows sunlight to penetrate and increases air flow. This speeds drying of the grass and aids in disease control.

8. Any grass disease may spread and build up rapidly in a pure stand because every plant is susceptible. The chance for a disease to spread and build up is restricted in lawns

¹ John L. Weihing is Extension Plant Pathologist, University of Nebraska; Malcolm C. Shurtleff is Extension Plant Pathologist, University of Illinois; Robert E. Partyka is Extension Plant Pathologist, Ohio State University.

containing a mixture of grass varieties or species. One should be aware of the destructive diseases if he wishes to have a pure single species and to adjust his lawn care operations to perform control measures regularly.

MELTING-OUT (FADE-OUT, DYING-OUT)

Symptoms

A variety of symptoms are produced by this disease. Thinning out of grass in scattered areas of the lawn is one sign of melting-out. A general brownish undercast caused by dead grass leaves accompanies the general thinning out. As the disease progresses, large irregular areas of the lawn are killed (Figure 1). In some instances the entire lawn is lost.

Examination reveals a spotting of the leaves. The spots are usually brown or purple, or brown with a purple border. They may be round or oblong and parallel to the leaf blade (Figure 2).

The leaf spot stage of the disease commonly does not cause extreme damage to the lawn. The more severe injury results when the leaf sheath area in the crown of the plant is infected. An infected leaf sheath will turn brown and die—resulting in death of the leaf blade. Under moist conditions the disease progresses



Figure 1. The lawn on the left is dying from melting-out disease. At right is healthy lawn.



Figure 2. Typical leaf spot symptom caused by melting-out disease on bluegrass.

from leaf sheath to leaf sheath until all above-ground plant parts are killed. The disease then may move down into the crown and rhizomes, killing the entire plant.

In hot weather, and particularly on Kentucky bluegrass, the disease may cause a sudden dying-out of large, irregularly shaped areas. There may be no visible symptoms on the foliage of dead plants and they appear to have died from drought.

Sometimes this disease causes yellowing of the leaves, resembling symptoms of low nitrogen or iron deficiency. Later, much or all of the affected areas may die out. The internal tissues of the crowns and roots of the affected plants in these areas are brown and rotten.

Procedure for diagnosing melting-out disease:

1. Check the leaf blades for leaf spots. This symptom may not be apparent during midsummer but is common in the spring and fall.

2. Check the leaf sheath for brown discoloration.

3. Where the lawn is yellowing and dying, check the crowns and roots for a brown rotting of these parts.

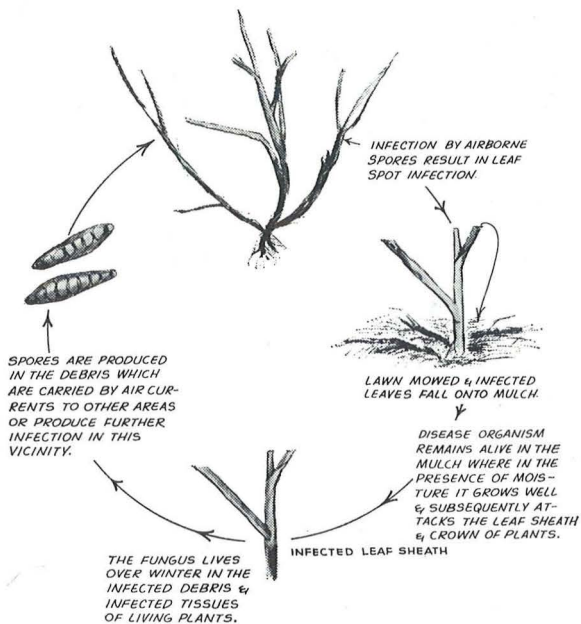


Figure 3. This drawing shows the life cycle of the fungi that cause melting-out (Fade-out, Dying-out) diseases.

4. Where sudden dying-out of areas of various sizes occurs in mid-summer, first check for sod webworm or grub damage. Grubs are usually found about one inch below the surface of the sod where they have cut off the grass roots. Sod webworm commonly chews the grass off at the soil surface. If grubs and sod webworm are absent and fertilizer and moisture are adequate, but there are no distinctive foliage symptoms, then the grass may have died as a result of root infection by one of the melting-out organisms.

Cause

This disease is caused by several species of *Helminthosporium*. All of these fungi have essentially the same life cycle (Figure 3).

The organisms produce spores (seeds). These spores can be blown around by the wind or may be carried to other areas of the lawn by mowers, flowing or splashing water,

on feet, etc. Here they may cause infection if there is free moisture on the surface of the plants. Excessive moisture and favorable temperatures during the next several days will allow the organisms to develop rapidly, resulting in death of many plants.

Control

Resistant varieties. There are major differences among varieties of Kentucky bluegrass in resistance to the melting-out fungi. For example, Merion bluegrass is resistant to *H. vagans* and *H. dictyoides* but susceptible to *H. sorokinianum*.

Watering. Do not keep the grass continuously wet or allow it to become excessively dry. Usually a lawn need not be watered more than once a week if the soil is soaked to a depth of 6 inches or more at each irrigation. During midsummer if the grass is allowed to become so dry that it begins to go dormant, or becomes

dormant, and then is watered heavily, melting-out disease may occur. The crown and root rot phase of this disease occurs more readily whenever the plants are suppressed in vigor by one cause or another. Therefore, it is important to keep the grass in good vigor, particularly during hot weather.

Removal of lawn clippings. A dense mulch is ideal for the development of melting-out organisms. Clippings should be removed from lawns. Thatch may continue to build up even though clippings are removed because of the dying-off of the old foliage of the lower part of the plant. If it accumulates above $\frac{1}{2}$ inch, the lawn should be power raked either in early spring or early fall. Aeration will help by bringing up soil which becomes mixed in the thatch thereby increasing the rapidity of its decay.

Spray program. A severe outbreak of melting-out is difficult to stop. There is such a large amount of the disease organism that protective measures listed above will not reduce sufficiently the quantity of the parasite to stop its development. In such cases it will be necessary to spray.

Good protection against melting-out is attained by spraying every 1 or 2 weeks from the time the grass greens in the spring until late fall. However, such a spray program is expensive and perhaps beyond the finances or available time of the average lawn owner.

When only a few sprayings can be made it is best they be applied in the spring. Make the first one shortly after the grass greens up, a second one three weeks to a month later and a third one a month after the second one.

If you wait until midsummer to spray, the disease will likely have increased and caused extensive damage. At this time it is hard to gain

control because the fungus is most likely established in the crowns, roots and rhizomes. These tissues can not be reached satisfactorily by most fungicides. Proper spring spraying may reduce the amount of the disease so that the lawn will progress satisfactorily throughout the rest of the growing season.

Best results are obtained when the chemicals are applied as a drench at the recommended ounces per 1,000 sq. ft. in 5-15 gallons of water. A hose-end sprayer which will handle wettable powder fungicides is satisfactory for making applications. A commercial wetting agent or spreader-sticker should be put into the spray solution to get the necessary coverage. Ask your pesticide dealer about them. Where commercial wetting agents are not obtainable you could use a common household detergent at the rate of 1 teaspoonful per gallon of water. Sporulation (fungus seed production) takes place in the thatch. A wetting agent will result in better coverage of the plants for protection and a soaking of the thatch to inhibit the disease organism. Excellent distribution and coverage is the key to control.

There are a number of chemicals that, when properly used, give satisfactory control of melting-out. New and more effective chemicals are being developed. Check with your county Extension agent or equivalent, each spring to see if any new chemicals or practices are recommended. Following is a list of suggested fungicides:

Phaltan—A wettable powder which is reported to be giving excellent control of melting-out. It is used as an ornamental, fruit and vegetable fungicide.

Folpet—Same as Phaltan.

Daconil 2787—A relatively new fungicide useful in the control of sev-

eral lawn diseases. It is a wettable powder. Follow the manufacturer's directions.

Difolatan—A new wettable powder which has given excellent control of several lawn diseases. Follow manufacturer's directions.

Fore—The active ingredient is the same as in Dithane M-45, but the product is designed for use on turfs. It is a wettable powder. Follow the manufacturer's directions.

Dithane M-45—Same as Fore.

Manzate 200—The active ingredient is the same as Fore.

Ortho Lawn and Turf Fungicide—This is a broad spectrum turf fungicide which contains Phaltan (Folpet), thiram and cadmium for the control of many lawn diseases.

Tersan OM—A wettable powder, broad spectrum fungicide designed for turf diseases.

Actidione-thiram—A fungicide designed for the control of a number of lawn diseases.

BROWN PATCH, RHIZOCTONIA DISEASE

Symptoms

This disease appears as somewhat circular brown patches, up to several feet in diameter (Figure 4). Grass leaves are first water-soaked and dark, but soon dry, wither and turn light brown in color. On close-clipped bentgrass a dark, grayish-black ring of wilting grass borders the diseased areas. This ring is noticeable in the morning but disappears when the grass dries. Turf generally recovers from brown patch in two or three weeks. When severe, however, the roots and crowns may not, especially in southern states. Such turf is killed or thinned out in large areas. Brown patch occurs in hot, humid, summer weather when night temperatures are above 70° F., and when leaf sur-



Figure 4. Brown patch disease in bentgrass golf green.

faces are covered with free moisture for long periods.

Cause

Brown patch is caused by the common soil-borne fungus, *Rhizoctonia solani*. This organism is present in most fertile soils. Virtually all lawn grasses grown in the Midwest are attacked. Bentgrasses are more seriously injured than the coarser bluegrasses and red fescues. Colonial bents are more susceptible than creeping bents.

The fungus parasitizes the grass blades, leaf sheath, stems, crowns and even the roots, causing their death.

The fungus is believed to overwinter principally as small, hard brown to black bodies (sclerotia) which measure about $\frac{1}{16}$ of an inch long. These are formed on underground parts of infected plants or in the top $\frac{1}{2}$ inch of soil. Sclerotia are extremely resistant to heat, cold, drought and chemicals. During moist periods, when the soil temperature is above 60° F., the sclerotia send out microscopic filaments which penetrate and infect grass plants.

For the brown patch fungus to attack grass leaves, four conditions must be fulfilled:

1. The presence of the active fungus in the soil or turf mat.

2. A dense growth of susceptible grass.

3. A prolonged dew or film of moisture on the foliage.

4. The maintenance of a temperature of 70° to 95° F. for at least several hours.

If one of these conditions is lacking, brown patch will not be severe.

The brown patch fungus grows out radially through the soil from germinating sclerotia—hence the circular spots. Under hot and humid conditions the lower grass leaves touching the soil or turf mat are attacked. Infection then progresses up the plant and spreads to adjacent grass blades in the “dew” or exuded water on the leaf tips.

Sclerotia may germinate and cause infection an indefinite number of times (30 or more) and survive in soil for a number of years. The fungus is also capable of surviving up to four months in dried grass clippings.

Control

Avoid overwatering and frequent late afternoon or evening sprinkling. Water early in the day so that the grass leaves will be dry before evening. Avoid overfeeding during summer months with a quickly available, high-nitrogen fertilizer. Less brown patch occurs when the available nitrogen supply in the soil is low and phosphorus and potassium levels are high. Prune dense trees and shrubs to let in sunlight, increase air circulation and promote faster drying. If possible, remove the clippings. Spray weekly in hot, humid weather, using Benlate, Daconil 2787, Ortho Lawn and Turf Fungicide, Dyrene, Difolatan or Tersan OM. Follow the manufacturer's directions. Apply sprays in the evening if the temperature is 80° F. or above.

DOLLAR SPOT, SMALL BROWN PATCH

Symptoms

This disease appears as round, brown or bleached spots, the size of a silver dollar, or somewhat larger (Figure 5). On bluegrass and fescues the spots may reach four to six inches in diameter. If left unchecked, the spots may merge forming large, irregular, straw-colored, sunken areas. When dollar spot is active a white, cobwebby growth can be seen on the grass leaves when dew is still present. Injured turf recovers quickly if treated promptly. If left untreated it may take weeks or months for new grass to fill in the sunken dead areas.

Cause

The white, cobwebby growth on the grass foliage is the dollar spot fungus, *Sclerotinia homeocarpa*. Dollar spot may occur regardless of management or soil fertility, but damage is usually most severe if there is a deficiency or great excess of nitrogen.

Dollar spot is most active during moist periods of warm (60-86° F.) days and cool nights in spring, early summer and fall.



Figure 5. Typical dollar spot leaf lesions on Kentucky bluegrass.

All lawn grasses grown in humid areas of the north central states are attacked. Bentgrasses, especially certain strains of creeping bent, are most susceptible.

Control

Follow the same cultural practices as for Brown Patch. Maintain adequate to high fertility by following the recommended lawn feeding program for your area. Spray during the spring months and again in late summer and fall using Benlate, Dyrene, Ortho Lawn and Turf Fungicide, Actidione-Thiram, Kromad, Tersan OM, Daconil 2787, Thimer or cadmium compounds. (In some regions the dollar spot organism has developed resistance to cadmium fungicides. Follow manufacturer's directions. Start applications when disease is first evident.

FUSARIUM BLIGHT

This turf disease was recently isolated and identified by plant pathologists at Pennsylvania State University. It is becoming one of the most troublesome diseases in the eastern part of the United States on Merion bluegrass. Other grasses also appear to be susceptible to the disease.

Symptoms

The first symptoms of affected turf grass appear as scattered light green patches varying from 2 to 6 inches in diameter (Figure 6). During favorable conditions for disease development the color of these patches changes in a 36-48 hour period to dull reddish-brown, then to tan, and finally a light straw color. The patches may be elongate streaks, crescents or circular patches.

In the final stages of the disease distinct streaks and uniformly blighted circular patches of diseased grass

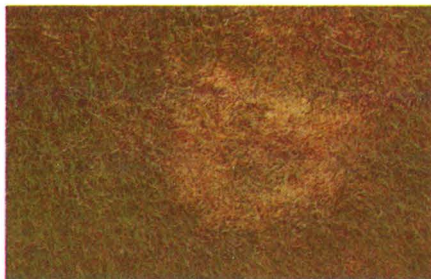


Figure 6. Fusarium blight.

will be scattered throughout the lawn. Centers of green, apparently healthy grass, may occur in patches of dead grass giving a frog-eye pattern appearance to the area.

The frog-eye pattern is a key diagnostic feature of the disease. When ideal conditions for disease development exist for an extended period of time, these affected areas overlap each other. The result is a completely blighted area. In some cases pink mycelial growth can be found in the crown area of the plants.

Cause

Fusarium blight is caused by two fungi, *Fusarium roseum* f. Sp. *cerealis* 'Culmorum' and *F. tricinctum* f. sp. *poae*. *F. roseum* appears to be the more important fungus at the present time. *Fusarium roseum* is widely distributed throughout the U.S. but the disease is found only in limited areas at present.

Dry, warm-to-hot conditions are required by these fungi to grow actively on grass. Temperature ranges from 75 to 95° F. or above with high humidity at the grass level favors disease development. Disease severity appears to be directly proportional to the intensity and duration of sunlight. Diseased turf has not been observed in heavily shaded areas.

Control

1. Maintain grass in vigorous growing condition but avoid exces-

sive nitrogen fertility during those times of the year when attack may be expected such as hot periods of the summer.

2. Keep thatch to a minimum as this provides an ideal area for the fungus to overwinter and multiply.

3. Bentgrass, fescue, ryegrass and bluegrass are susceptible to this disease but Merion bluegrass appears to be the most susceptible at the present time.

4. A protective spray program should be used to keep this disease to a minimum if it is or has been present in a lawn. Once the disease becomes well-established during the summer it may be difficult to control.

Given rates should be mixed with 10 gallons of water and applied to 1,000 sq. ft. of turf area. Use at least 100 pounds per sq. in. of pressure to obtain even distribution. Apply at 7-10 day intervals in April through September for bents and fescues and July through August for bluegrasses.

Fore—4-6 oz. (14-21 Tbs.)

Tersan OM¹—4-6 oz.

¹This material is poisonous and should not be used by homeowners unless all precautions on the label are followed.

SNOW MOLD

Symptoms

This disease appears as a more or less circular, dead, bleached area from one inch to several feet in diameter. Several spots may run together forming large, irregular areas. Affected grass may be first covered by a dense, whitish-pink or dirty gray to almost black mold growth. The disease is usually found in winter or early spring in wet, shaded areas or where snow is slow to melt (Figure 7). A crust-like mat of light brown foliage may form where the grass has been left long. Roots and stems may be rotted over a wide range of temperatures (28-65° F.). All lawn grasses are susceptible. Bentgrasses are more severely attacked than coarser lawn grasses.

Cause

Various fungi. Pink snow mold is caused by *Fusarium nivale* (*Calonec-tria*), while grey snow mold is caused by *Typhula* spp. The latter fungi produce dark mold growth on affected areas. In some northern areas, where summers are cool and moist,



Figure 7. Snow mold injury (next to oak leaf) as snow melts. This growth on the grass is a fungus. When freshly uncovered from the snow, it is whitish but soon becomes a dirty gray to almost black.

species of *Fusarium* are active throughout the summer.

Infection and injury may take place both under the snow and as the snow is melting. Frequently, snow mold damage will conform to foot prints, ski tracks, etc., because compaction of snow favors the disease. Injury ceases when the grass surface dries out.

Control

In northern states do not fertilize after September 15. Follow cultural recommendations for your area. Lawns should not go into the winter growing at a fast rate. Keep the lawn cut to recommended height late in the fall to prevent a mat of grass from forming. *Before* the first heavy snow, or cold drizzly weather, apply a spray of Tersan OM, Ortho Lawn and Turf Fungicide, Dyrene, Thimer, Difolatan, Daconil 2787, Phaltan or cadmium compounds. Follow the manufacturer's directions. Repeat during a midwinter thaw. Spray during the growing season as for Melting-out. When establishing a new lawn be sure to plan for good surface drainage.

RUST

Symptoms

This disease does not usually become a problem until August or September following extended hot and dry periods when grass grows slowly or not at all. Some varieties of Kentucky bluegrass are particularly susceptible.

Grass heavily infected with rust becomes reddish-brown or orange in appearance. Upon close examination of the grass blades and leaf sheaths you will find rust-colored spots (Figure 8). The rusty material will rub off easily onto your fingers, shoes or trousers. Continuous heavy infection causes many of the grass blades to

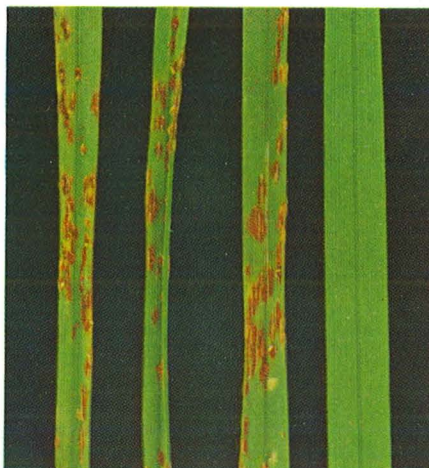


Figure 8. Rust lesions on bluegrass. The lesions contain reddish dust-like material that readily rubs onto one's fingers or shoes when walking through a rusted lawn.

turn yellow and die. Severely rusted lawns may winter-kill.

Cause

The dusty red material is actually "seeds" of a rust fungus (*Puccinia* spp.). These tiny "seeds" are carried about by air currents. Some land on uninfected grass blades where, in the presence of moisture, they germinate and cause new infection.

Control

Spray the grass several times at 7- to 15-day intervals with one of the following: Zineb, maneb, Tersan OM, Tersan, Dyrene, sulfur or Actidione-thiram. Follow the directions given on the container. Add enough wetting agent to the solution so the spray mixture will spread over the surface of the grass blades and not run off in droplets. Good coverage of the leaf surfaces is necessary for control. If possible remove the clippings.

Application of sprays may not be necessary if grass is kept growing in hot dry weather through application of nitrogen fertilizer and water.



Figure 9. The white substance on the leaves is the powdery mildew fungus.

POWDERY MILDEW

Symptoms

A turf heavily infected with mildew looks as if it has been dusted with flour or lime. Examination of the grass blades reveals a white, powdery-like growth (Figure 9). Infected leaves usually yellow and wither. New plantings and established turf may be killed if mildew is severe. Disease attacks occur chiefly in the fall and spring when nights are cool.

Cause

Mildew is caused by a fungus (*Erysiphe graminis*) which is confined to the surface of the leaves. It sends sucker-like structures into the leaf cells from which it obtains its nourishment. The aerial portion of the fungus produces thousands of "seeds" which are distributed by air currents and result in new infections. Mildew is most severe in shaded and protected areas.

Control

This disease can be checked by thorough application of Karathane (Mildex), an Actidione product or dusting sulfur. Make two applications about 10 days apart. Keep the lawn vigorous by fertilizing and maintaining adequate moisture in the soil. If possible, reduce shade by pruning dense trees and shrubs.



Figure 10. Leaves of a Kentucky bluegrass plant curled and shredded by stripe smut infection.

STRIPE AND FLAG SMUT

Symptoms

Stripe and flag smuts are more prevalent during the spring or fall, as they are favored by cool temperatures. Infected plants are usually first noticeable singly or in patches from a few inches to a foot or more in diameter. Infected plants are often pale green to slightly yellowed and stunted. Observing the leaf blades more closely, they are found to be curled and to have black stripes. A black, soot-like dust rubs off from these stripes. When the stripes are first developing, they are gray and may or may not be continuous along the leaf blade. It is after these gray lesions rupture that they turn black. The leaf then twists, curls and shreds from the tip downward (Figure 10).

Cause

Stripe and Flag smuts are caused by, respectively, *Ustilago striiformis* and *Urocystis agropyri*. The soot-like

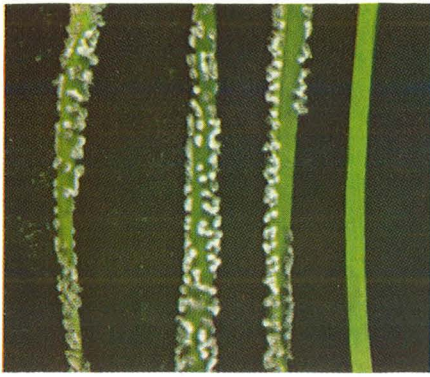


Figure 11. The whitish growth on the grass blades is slime mold.

material is actually a mass of smut spores. These spores infest the soil where they are capable of germinating and producing an infection thread which can invade grass seedlings or young tillers. The fungus will grow systemically in the plant tissues and will remain within the plant until it dies. Infected plants usually die during hot dry weather.

Control

Certain varieties of Kentucky bluegrass and creeping bentgrass are highly resistant or immune to stripe and flag smuts; other varieties are very susceptible. Benomyl (Benlate) has eliminated smut fungi within both bentgrass and bluegrass plants when applied as a soil drench in several applications at 2-4 week intervals. The manufacturer's directions should be carefully followed.

SLIME MOLDS

Symptoms

These normally harmless pests frequently cause considerable alarm. They commonly appear in the spring, but may occur during mid-summer or fall following heavy rains or watering. Small white, gray or yellow slimy masses grow over the grass in round or irregular patches smoth-

ering or shading otherwise healthy surfaces. The masses dry to form bluish-gray, gray, black or white powdery structures (Figure 11). When crushed between the fingers, they disintegrate into a powdery mass that easily rubs free from the grass blade.

Cause

Slime molds are not parasites. They are soil inhabiting organisms (*Mucilago spongiosa*, *Physarum cinereum*, etc.) which feed on decaying organic material in the soil. In humid weather a slime mold grows out of the soil onto whatever is available for support and produces its spore masses. A well-watered, well-fertilized lawn provides an ideal environment.

Control

If left alone, the slime mold soon disappears. However, since it is unsightly a home owner may wish to remove it. This can be done by a forceful spray from a garden hose or with a garden rake. Fungicides applied to control Melting-out, Brown Patch or other diseases should keep slime molds in check.

TOADSTOOLS, MUSHROOMS, PUFFBALLS

Symptoms

Everyone has seen toadstools, mushrooms and puffballs of various sorts (Figure 12). Sometimes they are quite an annoyance. Some are foul-smelling; some are poisonous and a menace to children and pets.

Cause

Toadstools, mushrooms and puffballs are fruiting structures of various kinds of fungi. These fungi grow on rotting wood or decaying organic material in the soil. They are commonly found in areas of buried tree

stumps, dead roots, logs, boards and a thick thatch following heavy rains or watering.

Control

These fungi are difficult to control until all of the wood or other organic matter upon which they are feeding has been completely consumed. Temporary control may be obtained by applying Panogen Turf Spray, phenyl mercury, Thimer or Tersan OM within and around the surrounding area. (Caution: Mercuries are highly toxic and care should be taken not to get them on the skin. Wear rubber gloves and clothing as protection.) However, after the chemical has been dissipated, the toadstools or mushrooms usually come back. Treatment may be necessary at monthly intervals. Follow the directions given under Fairy Ring. In some cases it may be practical to dig up the pieces of buried wood. It is usually best to let them go ahead and complete the decay of the material, after which they will disappear.

FAIRY RING

Symptoms

Fairy Ring disease causes a circular ring of fast-growing, dark green grass often surrounding a ring of thin or dead grass (Figure 13). Sometimes the ring is not complete and gives the appearance of an arc or horseshoe. The rings vary in size from a few inches in diameter to many feet. The strip of thin or dead grass varies from three to six inches in width. After rains or watering many mushrooms or toadstools may appear in the area of dark green grass. Occasionally the symptoms may appear as "dry patches" in lawns instead of a ring.

Cause

Fairy ring is caused by several soil-inhabiting mushroom (toadstool) types of fungi (*Marasmius oreades*, *Psalliota (Agaricus) campestris*, *Leptiota morgani* etc.) which grow very extensively in the area of the ring. Growth starts with a germinating

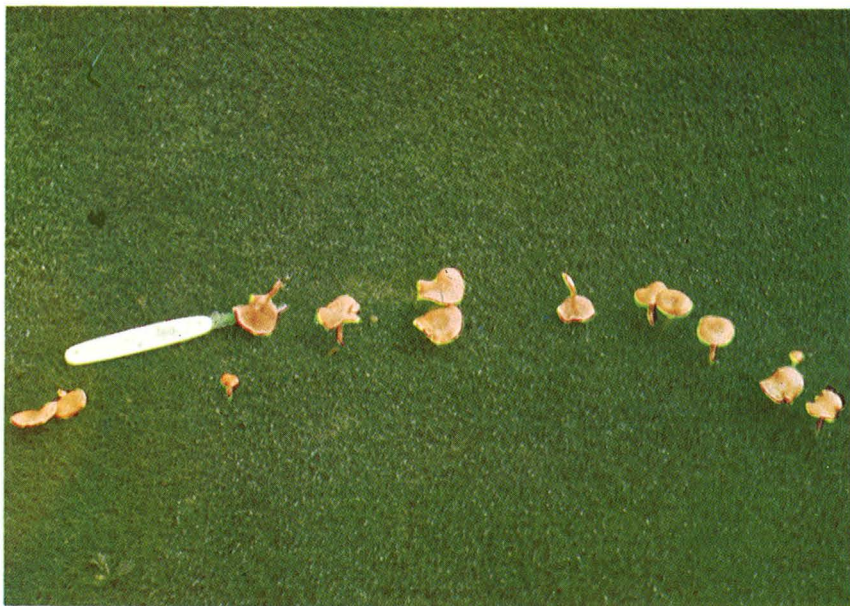


Figure 12. Toadstools growing in a lawn.



Figure 13. A large fairy ring with toadstools (mushrooms) growing at the outer edge.

“seed” at a central point and filaments of the fungus grow outward equally in all directions. Outward spread may occur at the rate of a few inches to two feet or more per year. The part of the fungus on the inner side of the circle dies off as the fungus grows outward. The darker green grass is caused by microorganisms in the soil breaking down organic matter, subsequently resulting in greater nitrogen availability.

Control

The most satisfactory method of handling this situation is to “mask” the rings by pumping large quantities of water 12-24 inches deep into the soil within the ring of dead grass using a “root feeder” attached to a garden hose. Repeat when rings appear.

Fairy ring is difficult to control because the soil in the area in which the fungus is present becomes impervious to movement of water. The fungus can be killed by the use of mercury fungicides, but the main problem is getting the fungicide in contact with the organism. Control will not be satisfactory unless this is accomplished.

Prior to making a fungicide application, break up or perforate the fairy ring soil with a spading fork or some similar aerifying instrument.

Make holes $\frac{1}{2}$ to 1 inch in diameter, 4 to 5 inches apart and 6 to 8 inches deep in the ring of stimulated grass and about 6 inches outside the ring.

Fill the holes within one inch of the soil surface with a solution containing a mercurial fungicide such as a mixture of calomel 2 parts and corrosive sublimate 1 part mixed in water at a rate of 2 ounces ($1\frac{1}{2}$ tablespoons) per gallon; phenyl mercury compounds such as PMAS, 1 fluid ounce, or Puraturf No. 10, 2 fluid ounces per 5 gallons of water; or Panogen Turf Spray as recommended on the container. (Caution: mercuries are highly toxic and care should be taken not to get them on the skin. Wear rubber gloves and adequate clothing as protection.) Use a battery bulb or watering can with spout in filling the holes to avoid spilling the solution on the grass. Wash off the grass if any is spilled.

Another method of control involves removal of the sod and sterilization of soil underneath using a soil fumigant (e.g., methyl bromide, chloropicrin, Vapam, VPM Soil Fumigant, etc.). The manufacturer's directions must be followed carefully.

DAMPING-OFF, SEED ROT

Symptoms

Seeds rot in the soil. The grass stand is thin and sickly in irregular patches. Seedlings are stunted, water-soaked, and turn yellow to brown. They may wilt and collapse. Surviving plants are weakened. Stand is slow to fill in. Affected areas are often heavily invaded by weeds.

Cause

Numerous soil-borne fungi (especially *Pythium* and *Rhizoctonia* spp.) may cause this disease. Attacks are most severe during warm weather (May-June) on heavy, moist or water-logged soils.

Control

Plant good quality seed in a well-prepared, fertile seedbed. Provide for good soil drainage when establishing a new lawn. Fill in low spots where water may stand. Treat seed before planting by dusting thoroughly with thiram or captan seed treatment ($\frac{1}{2}$ teaspoonful per pound of seed). Avoid overwatering after planting. If possible, seed in late summer or early fall. The next best time is early spring. After a planting apply a spray of Kromad, captan, Dexon, thiram, maneb, or zineb. Use 4 ounces of chemical in 3 gallons of water to cover 1,000 square feet.

NEMATODES

Symptoms

Turf lacks vigor, often appears off-color, yellow, bunchy and stunted. Grass blades dying back from the tips may be interspersed with apparently healthy leaves. Injured turf may later thin out, wilt and die out in irregular areas. The severity of symptoms varies with the quantity of plant parasitic nematodes feeding on and in the roots.

Nematode injury is often confused with fertilizer burn, a soil nutrient deficiency, poor soil aeration, drought, insects, and other types of injury. Nematode-injured grass does not respond normally to water and fertilizer. Damaged roots may be swollen, shallow, "stubby" and dark in color. The presence of plant parasitic nematodes can only be identified by taking plugs of suspected turf and having them examined by a competent nematologist.

Cause

Nematodes are microscopic, slender roundworms (sometimes called eelworms or nemas). They live in the soil where they penetrate into grass roots or suck sap from the root sur-

face. Nematodes may cause wounds through which disease-producing microorganisms may enter. Most nematode types are harmless, feeding upon decomposing organic material and other soil organisms. A few are beneficial to man since they are parasitic on plant-feeding types.

Control

Keep grass growing vigorously by watering, fertilizing and following cultural practices outlined above. If severe, apply Nemagon or Fumazone, following the manufacturer's directions.

OTHER CAUSES OF POOR TURF

Insect Injury

Numerous insects, including grubs, ants, webworms, chinch bugs, leafhoppers and others may damage turf. Insect injury may closely resemble one or more lawn diseases. If you suspect a lawn insect problem contact your county Extension office or the Extension entomologist at your land-grant university.

Chemical Burn

Agricultural chemicals (e.g. fertilizers, pesticides, hydrated spray lime) may injure grass if improperly applied. Burned areas may occur in spots or streaks, or the entire lawn may be "scorched." Prevent injury by following the directions printed on the package label. Apply fertilizers evenly in recommended amounts, when the grass is dry. Then water immediately. The use of a lawn spreader is highly recommended. Ground agricultural limestone is safer to use on lawns than hydrated lime.

Chlorosis, Yellowing

Areas or all of the turf may become yellowed and stunted. Chlorosis (yellowing) is usually caused by

nitrogen or iron deficiency. Most lawn fertilizers contain nitrogen. If a fertility program is carried out this element is probably being applied in sufficient amounts. However, if the lawn continues to remain yellow after nitrogen application the cause is likely to be iron deficiency. This is most likely if the soil is either highly acid or highly alkaline.

Control: Apply 2 or 3 pounds of iron sulfate (sold as "Copperas" or "Sulfasoil") in 5 to 10 gallons of water per 1,000 square feet. Repeat the treatment as necessary to maintain normal green turf color. Take care to avoid spray drift because iron sulfate leaves a brown stain. Some lawn fungicides (e.g., Kromad, Actidione-Ferrated, etc.) already have iron sulfate in the spray mixture. Iron chelate materials (e.g., Versenol, Sequestrene) also correct iron deficiency. When starting a new lawn have the soil tested before seeding. This can be done, usually for a small service charge, by your state university or by a private soil testing laboratory. The pH of the soil (sweetness or sourness) should be close to neutral (pH 6.5 to 7.0). If the pH is far outside this range (below pH 6.0 and above 7.3) check with your county Extension office on what and how to bring the soil within the desired range.

Buried Debris

A thin layer of soil over buried rocks, lumber, bricks, plaster, concrete, etc., dries out rapidly in hot summer weather and may resemble disease. Control by digging up suspicious areas and removing the cause.

Compacted Areas

Thin turf or bare spots appear in heavily used areas. Waterlogged soils become packed and later bake hard if walked on constantly. Correct by

aerifying the soil using an aerifier or installing drainage tile for seriously water-logged soils. This allows water and air to penetrate into the soil. If necessary, fertilize and reseed. Reduce foot traffic on lawn by putting in a walk or patio or erect a fence or plant a shrub.

Algae, Green Scum

A green to blackish scum may form on bare soil or thinned turf. This is most common in low, wet, shaded or heavily used and compacted areas. The mass of algae (minute plants) dries to form a thin, black crust which later cracks and peels.

Control: Perform the same cultural practices as for Brown Patch and Compacted Areas. Where necessary, apply a spray of Fore, maneb, Daconil 2787 or copper sulfate, 1-2 ounces in 3 to 5 gallons of water, to 1,000 square feet of lawn.

Moss

Moss occurs in lawn areas low in fertility, with poor drainage, high soil acidity, too much shade, watered improperly, heavily compacted or a combination of these factors.

Control: Remove moss by hand raking. Correct the unfavorable condition by following the cultural practices as for Compacted Areas and Algae. Have a soil test made and follow the instructions given in the report. Follow recommendations on maintaining turf suggested on page 3.

Dog Injury

Injury from dog urine, principally female, may resemble brown patch. Affected areas are often more or less round and commonly are several inches or larger in diameter. Injured grass turns brown or straw-colored and usually dies.

Summary of Diseases Controlled by Various Fungicides

Season	Disease	Fungicides	Ounces per 1000 sq. ft.	Remarks		
Spring	Snow mold	Tersan OM	6-8	Most materials may be applied dry, as sprays, or mixed with a granular fertilizer. Apply to problem lawn or fine turf areas following first heavy snow or when cold, drizzly weather is forecast in late fall. Reapply 1-3 times during winter or early spring as snow melts. <i>Follow manufacturer's directions carefully.</i> Follow recommended fertilizer program but avoid applications following September 15, particularly Nitrogen. Use lime <i>only</i> when needed.		
		Ortho Lawn and Turf Fungicides	4-6			
		Dyrene	6-8			
		Thimer	4-6			
		Difolatan (Folcid)	4			
		Daconil 2787	2-4			
		Phaltan	2-4			
		Cadmium compounds	See label			
		Powdery mildew	Karathane WD		1/2	Two to three applications are needed 7-10 days apart in spring and fall when days are warm and nights cool. Most serious in shady, damp locations. Fall established, effected turf may winter-kill.
			Actidione-Thiram		2-4	
Sulfur						
Spring or Summer	Melting-out, Fading-out, Dying-out	Actidione-Thiram	2-4	Where it is necessary to maintain quality turf such as in golf courses, fungicides are best applied on a regular, protective schedule. <i>If disease usually occurs during cool, wet, weather,</i> begin applications in early spring when first leaves are formed. Continue at 1-2 week intervals until warm, dry weather comes. <i>If disease usually occurs during hot weather,</i> begin treatment in mid-May in southern midwest to mid-June in northern midwest.		
		Difolatan	4			
		Folpet	2-4			
		Ortho Lawn and Turf Fungicide	4-6			
		Dithane M-45	2-4			
		Tersan OM	6-8			
		Daconil 2787	2-4			
		Phaltan	2-4			
		Fore	2-4			
		Manzate 200	2-4			
				<p>In home lawn, the disease is usually checked by cultural practices, e.g., mowing at recommended maximum height, collecting clippings, keeping down thatch, avoiding overwatering, fertilizing following recommended program, watering seldom but deeply, increasing air circulation, etc.</p>		

Summary of Diseases Controlled by Various Fungicides (Continued)

Season	Disease	Fungicides	Ounces per 1000 sq. ft.	Remarks
Summer	Brown patch	Benlate	2	Apply weekly in hot, moist weather. Avoid over-watering (especially in the evening), frequent, light watering, and over-fertilizing with quickly available, high-nitrogen fertilizers. Increase air movement. Remove dew on golf greens early in morning. This disease is most severe when evening temperatures remain above 70° F.
		Ortho Lawn and Turf Fungicide	4-6	
		Dyrene	4-8	
		Difolatan	4	
		Tersan OM	6-8	
		Daconil 2787	2-4	
	Dollar spot	Cadmium compounds	See label	Apply in spring, early summer and fall when temperatures averages between 60° and 80° F. Cadmium compounds last the longest. Use same cultural practices as given for melting-out and brown-patch diseases.
		Kromad	3-4	
		Dyrene	4-8	
		Ortho Lawn and Turf Fungicide	4-6	
Actidione-Thiram		2-4		
Benlate		2		
Tersan OM		6-8		
Daconil 2787	2-4			
Fusarium blight	Fore	4-6		
	Tersan OM	4-6		
Fall	Rust	Actidione-Thiram	2-4	This disease is rarely a problem until the rate of growth of the grass is slowed down in the fall due to drought, short days, and cool temperatures. Where it is a problem, make three weekly applications.
		Zineb	2-4	
		Maneb	2-4	
		Dyrene	4-8	
		Sulfur	6-8	
		Tersan OM	6-8	
	Powdery mildew	See above under Spring		



Read the entire pesticide label

It tells you

- what the chemical is
- the diseases it controls
- grass species on which to use it
- how much to use
- when to use

Apply only as directed

- controls will be more effective
- chances of plant injury are reduced

Handle pesticides carefully

- take proper precautions with children and pets
- avoid drift
- wear protective clothing if specified
- clean-up immediately after application
- safely dispose of empty containers
- keep and store in the original labeled containers out of the reach of children and irresponsible adults