

University of Nebraska - Lincoln

DigitalCommons@University of Nebraska - Lincoln

Library Philosophy and Practice (e-journal)

Libraries at University of Nebraska-Lincoln

Summer 3-13-2018

CONTRIBUTION TO OPEN ACCESS REPOSITORY BY THE TAMIL NADU STATE UNIVERSITIES IN INDIA ; A CASE STUDY OF SHODHGANGA

Sivasubramanian Subbiah

pssivasu@gmail.com

Follow this and additional works at: <https://digitalcommons.unl.edu/libphilprac>



Part of the [Collection Development and Management Commons](#), and the [Information Literacy Commons](#)

Subbiah, Sivasubramanian, "CONTRIBUTION TO OPEN ACCESS REPOSITORY BY THE TAMIL NADU STATE UNIVERSITIES IN INDIA ; A CASE STUDY OF SHODHGANGA" (2018). *Library Philosophy and Practice (e-journal)*. 1766.
<https://digitalcommons.unl.edu/libphilprac/1766>

CONTRIBUTION TO OPEN ACCESS REPOSITORY BY THE TAMIL NADU STATE UNIVERSITIES IN INDIA : A CASE STUDY OF SHODHGANGA

Dr. S.SIVASUBRAMANIAN

Librarian

APA College of Arts and Science
Nanguneri, Tirunelveli, Tamilnadu, India
E-mail: pssivasu@gmail.com

ABSTRACT

This articles attempts to provide the overview of the contributes made by the Tamil Nadu State Universities of India to the Open Access repository namely Shodhganga INFLIBNET. In TamilNadu there are 41 Universities in listed by the UGC as on 13.09.2017. Out of these Universities 33 Universities were MoU by Shodhganga INFLIBNET. Open Electronic Thesis and Dissertations plays Vitol role in the academic students as it help is presenting duplication of research work already been done. This article is an intensive case study of the contribution of these Departments wise from different Tamil Nadu State Universities in India .

Keywords : Electronic Thesis and Dissertations, Institutional Repositories, Open Access, Tamilnadu Universities , India, Shodhganga, INFLIBNET.

Introduction

This open Access initiative and started long back but it is very useful momentum only after 1990 as with the increase of Net usage the applicability of Open Access research publication also slowly increased. In all Universities College and Research Institutes Open Access of Literature is free availability of Net user can read, copy, download and print distribute etc., This Open Access System it can be easily accessed and retrieved anytime, anywhere, and helps in increasing the clean visibility of the individual research. In India all the Higher educations Institutions are own interest developing Institutional Repository to manage the thesis and dissertations, and other research materials are available. Shodhganga is a digital Open Repository of our Indian Electronic Systems. This Thesis and Dissertations and other all related work done by Information for Library Network (INFLIBNET). This output repository maintained by INFLIBNET Centre using Dspace software Open source digital repository systems.

Review of Literature

Gavita Jhamb and Abdus Samin (2017) in this articles very most highlighted the contribution of Centre Universities of India. The year wise, and subject wise Contributions have been enlisted and analyzed in the articles. **Kumar (2015)** highlighted the current status of digital version of Thesis and Dissertations of Indian Universities as well as in Shodhganga . **Sengupta (2015)** his articles reported the status of Electronic Thesis and dissertations and contributions of Universities of Maharashtra. It found that out of 45 Universities in Maharashtra only 50% have signed MoU with Shodhganga. The Top three universities are followed by Shivaji Universities 412, Baba Amravati Universities 312 and Pune Universities 290. **Sivakumaran (2015)** have reported the Electronic Thesis and Dissertations deposited INFLIBNET Shodhganga. It is found that more than 32000 Thesis and Dissertations have been deposited on various discipline by 201 universities. **Das and Saikia (2014)** highlighted current status and contributions of Universities of Assam also registered Shodhganga, In Assam 16 Universities out of these only three are contributing to the Shodhganga INFLIBNET,

Objectives of the Study

- a) To find out number of Tamil Nadu State Universities which have signed MoU with Shodhganga and total number of Thesis and Dissertations contributed by all these Tamil Nadu State Universities.
- b) To find out Top Ten Tamil Nadu State Universities in accordance with the number of Thesis and Dissertations contributed by them to Shodhganga INFLIBNET.
- c) To find out the number of Thesis and Dissertations contributed by the department of each Universities and rank them accordingly.
- d) To find out the leading facilities of the respective Tamil Nadu State Universities for basis of their contributions.

Methodology

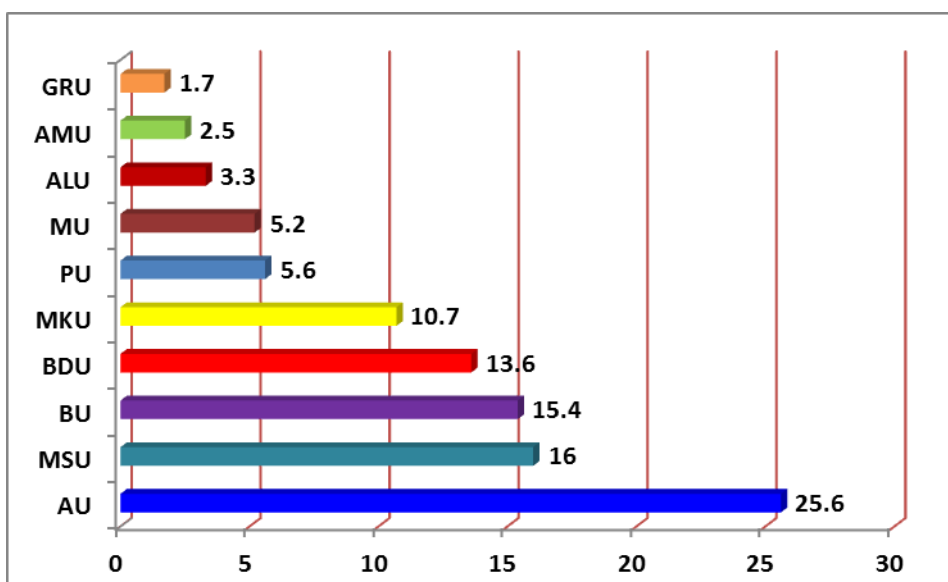
This study above objectives an extensive study of the Shodhganga repository was carried out. Only Tamil Nadu State all Universities (Arts, Science, Medical, Law Agriculture, Engineering and Sports) are selected for this study and data was collected Universities wise and Department wise. This data was collected for Shodhganga, INFLIBNET website till on 13.09.2017 and presented in the form of Tables and figures and analyzed using simple

percentage. The Top 10 Tamil Nadu all Universities were selected 33 Tamil Nadu State Universities have signed MoU with Shodhganga.

Table – 1
Top Ten Contributing TamilNadu Universities, India

Sl.No	Name of Universities (Tamil Nadu)	Number of Thesis submitted	Percentage
1	Anna Universities, Chennai	5346	25.6%
2	Manonmaniam Sundaranar Universities, Tirunelveli	3355	16%
3	Bharathiyar Universities. Coimbatore	3218	15.4%
4	Bharathidasan Universities, Tiruchirapalli	2847	13.6%
5	Madurai Kamaraj Universities, Madurai	2239	10.7%
6	Periyar Universities, Salem	1175	5.6%
7	Madras Universities, Chennai	1089	5.2%
8	Alagappa Universities, Karikudi	709	3.3%
9	Annamalai Universities, Chidambaram	526	2.5%
10	Gandhigram Rural Universities, Gandhigram, Dindugal	368	1.7%
	Total	20872	90.1%

Graph – 1
Ten Contributing Tamil Nadu State Universities, India



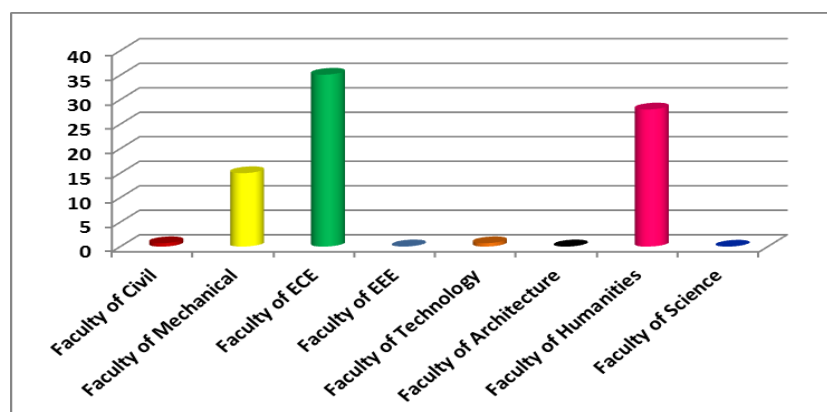
From table 1 and figure 1 it can be seen that out of 33 Universities ,Anna Universities ranked first as it has contributed the maximum number of these 5346 (25.6%) in shodhganga followed by Manonmaniam Sundaranar Universities whose ranked second place contribution is 3355(16%). Further it is found that Bharathiyar Universities ranks third with the contributions of 3218(15.4%), Bharathidasan Universities ranks fourth with the contributions of 2847(13.6%)thesis Madurai Kamaraj Universities ranks fifth with the contributions 2239(10.7%) Periyar Universities ranks sixth with the contributions of 1175(5.6%) Madras Universities ranks seventh place in 1089(5.2%) Alagappa Universities ranks eights place 709(3.3%) Annamalai Universities ranks in ninth place 526 (2.5%) and last Gandhigram Rural Universities is 368(1.7%)

Contributions by Anna Universities

Sl.No	Name of Department	Number of Thesis	Percentage
1	Faculty of ECE	1879	35.1%
2	Faculty of Humanities	1509	28%
3	Faculty of Mechanical	808	15%
4	Faculty of Civil	389	0.7%
5	Faculty of Technology	382	0.7%
6	Faculty of EEE	340	0.06%
7	Faculty of Architecture	35	0.06%
8	Faculty of Science	4	0.0007%
	Total	5346	

Table 2 shows that the department wise from Anna Universities to Shodhganga . It can be seen that out of Electronic and Communications Engineering is 1879 has contributed the maximum number then followed by faculty of Humanities 1509, faculty of Mechanical Engineerings 808, faculty of Civil 389, faculty of Technology is 382, Faculty of EEE 340 and Architecture is 35.

Graph – 2
Contributions by Anna Universities

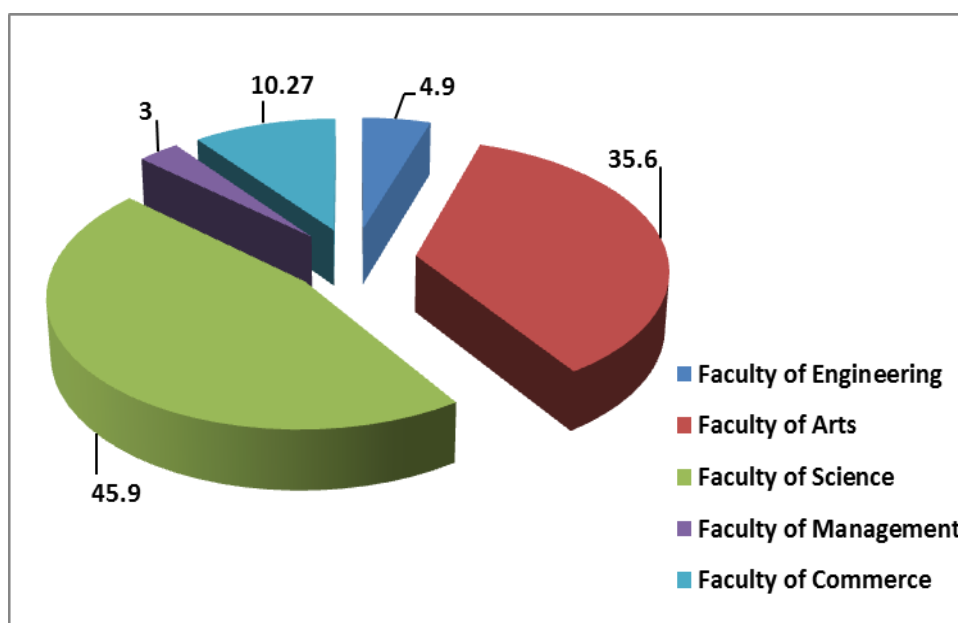


Contribution by Manonmaniam Sundaranar Universities

Table 3 shows that department wise from Manonmaniam Sundaranar Universities to Shodhganga. It can be seen that out of major mainly 5 departments, departments of Science (1543) has contributed the maximum number of Thesis followed by the department of Arts(1197) and department of Commerce (345). The least contribution is department of Management studies only (104)

Sl.No	Name of Department	Number of Thesis	Percentage
1	Faculty of Science	1543	45.9%
2	Faculty of Arts	1197	35.6%
3	Faculty of Commerce	345	10.27%
4	Faculty of Engineering	166	4.9%
5	Faculty of Management	104	3.0%
	Total	3355	

Graph – 3
Contributions by Manonmaniam Sundaranar University

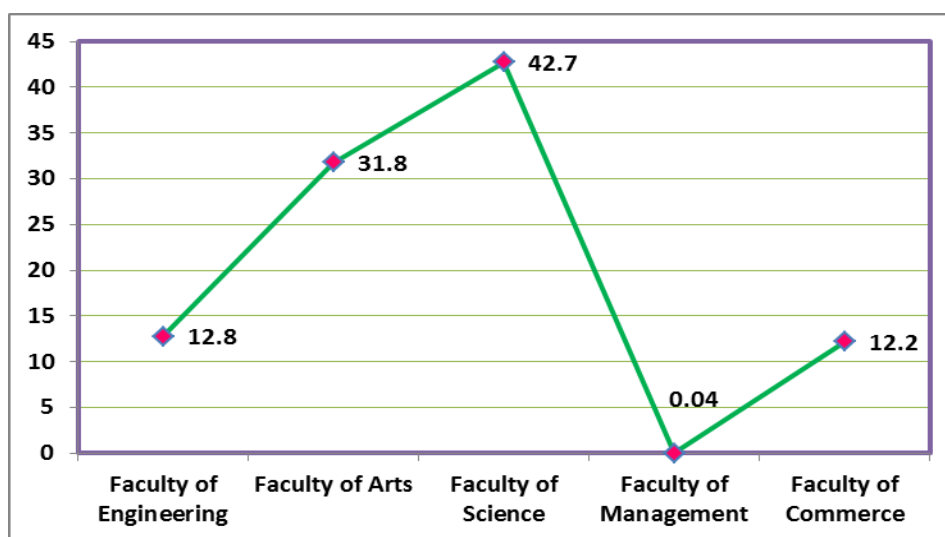


Contribution by Bharathiyar University

Table4 shows that department wise from Bharathiyar Universities to Shodhganga. It can be seen that out of major mainly 5 departments, departments of Science (1543) has contributed the maximum number of Thesis followed by the department of Arts(1197) and department of Commerce (345). The least contribution is department of Management studies only (104)

Sl.No	Name of Departments	Number of Thesis	Percentage
1	Faculty of Science	1376	42.7%
2	Faculty of Arts	1024	31.8%
3	Faculty of Engineering	412	12.8%
4	Faculty of Commerce	393	12.2%
5	Faculty of Management Studies	13	0.04%

Graph – 4
Contributions by Barathiyar University

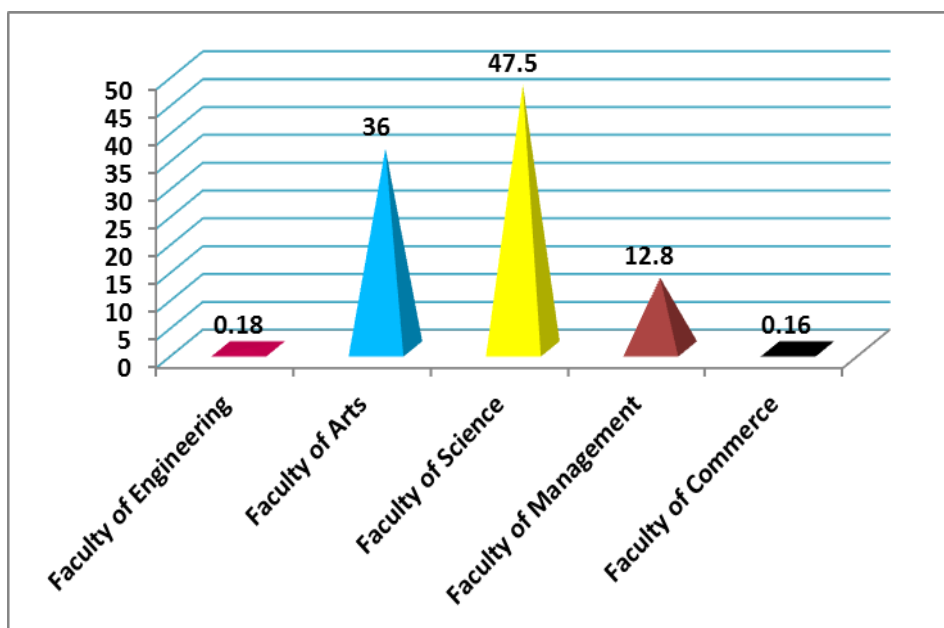


Contribution by Bharathidasan Universities

Table5 shows that department wise from Bharathidasan Universities to Shodhganga. It can be seen that out of major mainly 5 departments, departments of Science (1354) has contributed the maximum number of Thesis followed by the department of Arts(1027) and department of Commerce (395). The least contribution is department of Management studies only (48)

SL.No	Name of Departments	Number of thesis	Percentage
1	Faculty of Science	1354	47.5%
2	Faculty of Arts	1027	36%
3	Faculty of Commerce	365	12.8%
4	Faculty of Engineering	53	0.18%
5	Faculty of Management Studies	48	0.16%
	Total	2847	

Graph – 5
Contributions by Barathidhasan University

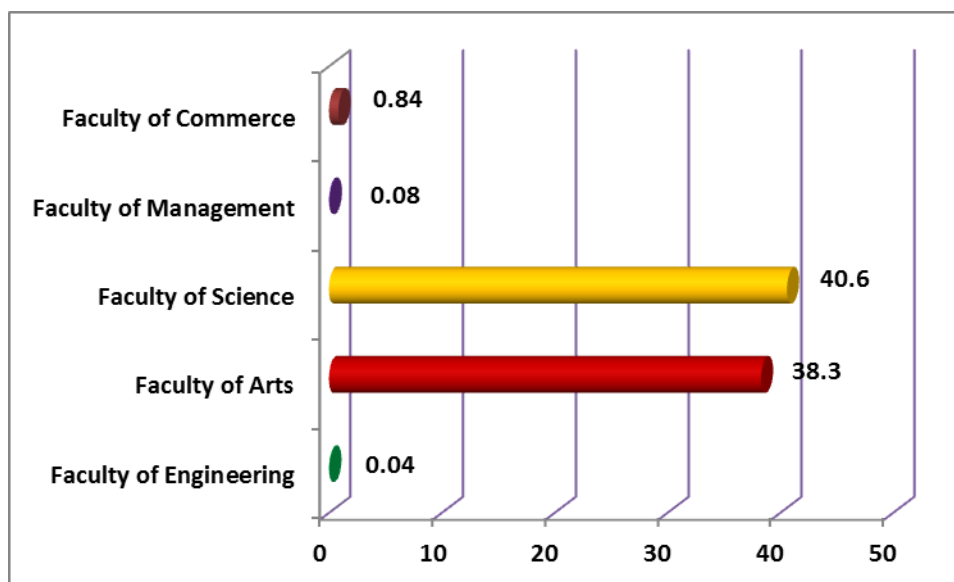


Contribution by Madurai Kamaraj Universities

Table 6 shows that department wise from Madurai Kamaraj Universities to Shodhganga. It can be seen that out of major mainly 5 departments, departments of Science (910) has contributed the maximum number of Thesis followed by the department of Arts(858) and department of Commerce (186). The least contribution is department of Management studies only (190)

Sl.No	Name of Departments	Number of Thesis	Percentage
1	Faculty of Science	910	40.6%
2	Faculty of Arts	858	38.3%
3	Faculty of Management Studies	190	0.084%
4	Faculty of Commerce	186	0.08%
5	Faculty of Engineering	95	0.04%

Graph - 6
Contributions by Madurai Kamaraj University

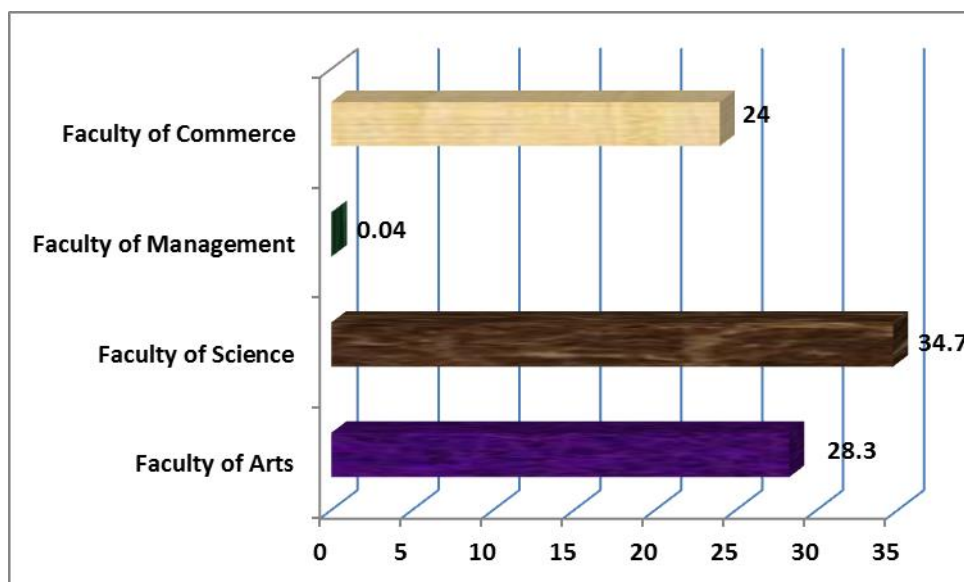


Contribution by Periyar Universities

Table7 shows that department wise from Periyar Universities to Shodhganga. It can be seen that out of major mainly 5 departments, departments of Science (408) has contributed the maximum number of Thesis followed by the department of Arts(333) and department of Commerce (283). The least contribution is department of Management studies only (51)

Sl.No	Name of Departments	Number of thesis	Percentage
1	Faculty of Science	408	34.7%
2	Faculty of Arts	333	28.3%
3	Faculty of Commerce	283	24%
4	Faculty of Management studies	51	0.04%
	Total	1175	

Graph – 7
Contributions by Periyar University

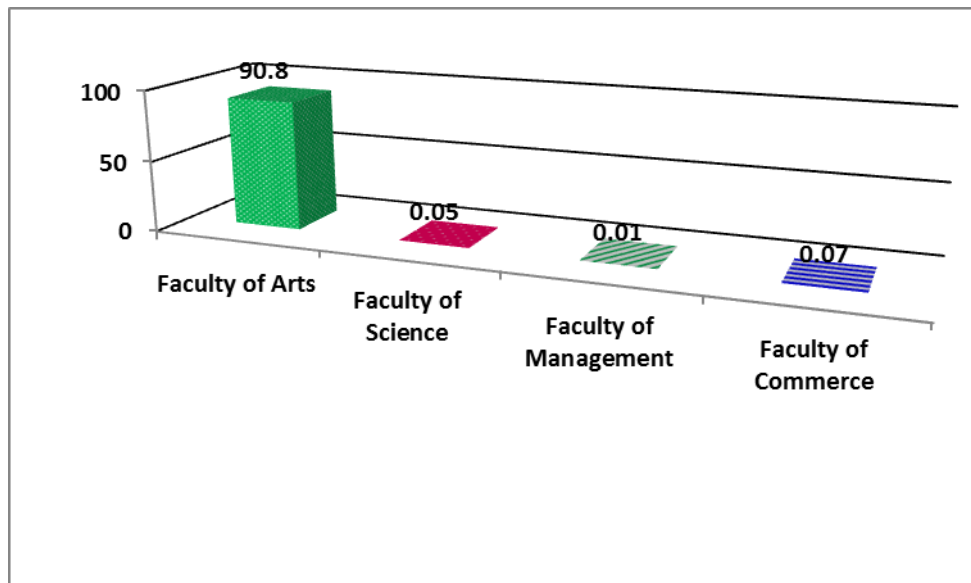


Contribution by Madras Universities

Table8 shows that department wise from Madras Universities to Shodhganga. It can be seen that out of major mainly 5 departments, departments of Arts(989) has contributed the maximum number of Thesis followed by the department of Commerce(80) and department of Management studies (14) The least contribution is department of Science only (6)

SL.No	Name of Departments	Number of thesis	Percentage
1	Faculty of Arts	989	90.8%
2	Faculty of Commerce	80	0.07%
3	Faculty of Management studies	14	0.01%
4	Faculty of Science	6	0.005%
	Total	1089	

Graph - 8
Contributions by Madras University

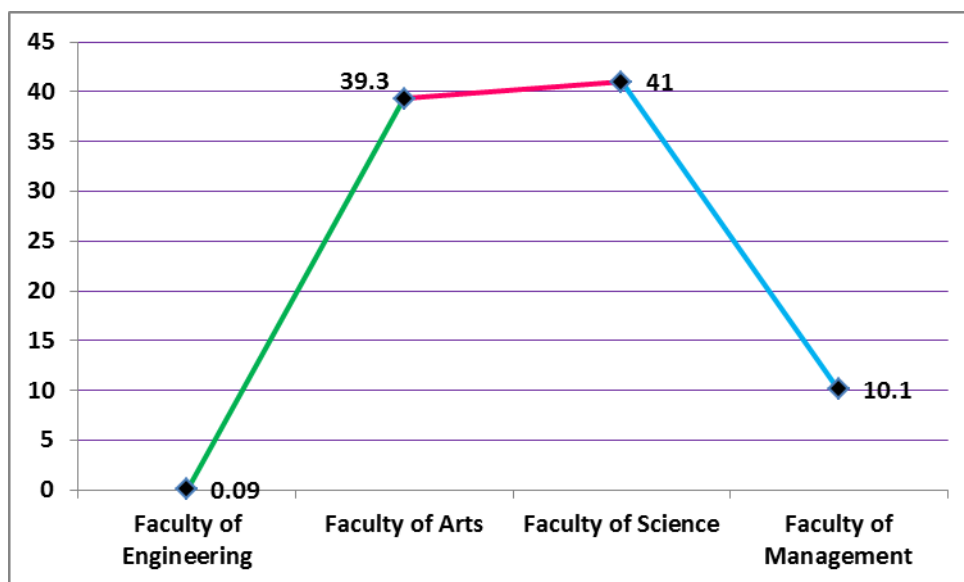


Contribution by Alagappa Universities

Table9 shows that department wise from Alagappa Universities to Shodhganga. It can be seen that out of major mainly 5 departments, departments of Science (291) has contributed the maximum number of Thesis followed by the department of Arts(279) and department of Management studies(72). The least contribution is department of Engineering only (67)

Sl.No	Name of Departments	Number of thesis	Percentage
1	Faculty of Science	291	41%
2	Faculty of Arts	279	39.3%
3	Faculty of Management studies	72	10.1%
4	Faculty of Engineering	67	0.09%
	Total	709	

**Graph - 9
Contributions by Alagappa University**

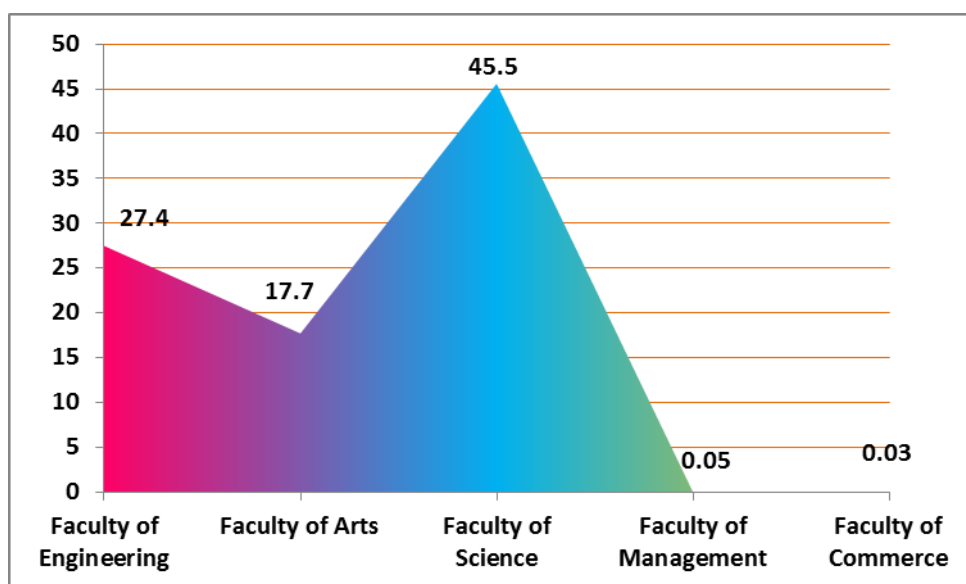


Contribution by Annamalai University

Table 10 shows that department wise from Annamalai Universities to Shodhganga. It can be seen that out of major mainly 5 departments, departments of Science (244) has contributed the maximum number of Thesis followed by the department of Engineering (147) and department of Arts(95). Followed by Management studies (29)The least contribution is department of Commerce only (21)

Sl.No	Name of Departments	Number of Thesis	Percentage
1	Faculty of Science	244	45.5%
2	Faculty of Engineering	147	27.4%
3	Faculty of Arts	95	17.7%
4	Faculty of Management studies	29	0.05%
5	Faculty of Commerce	21	0.03%
	Total	526	

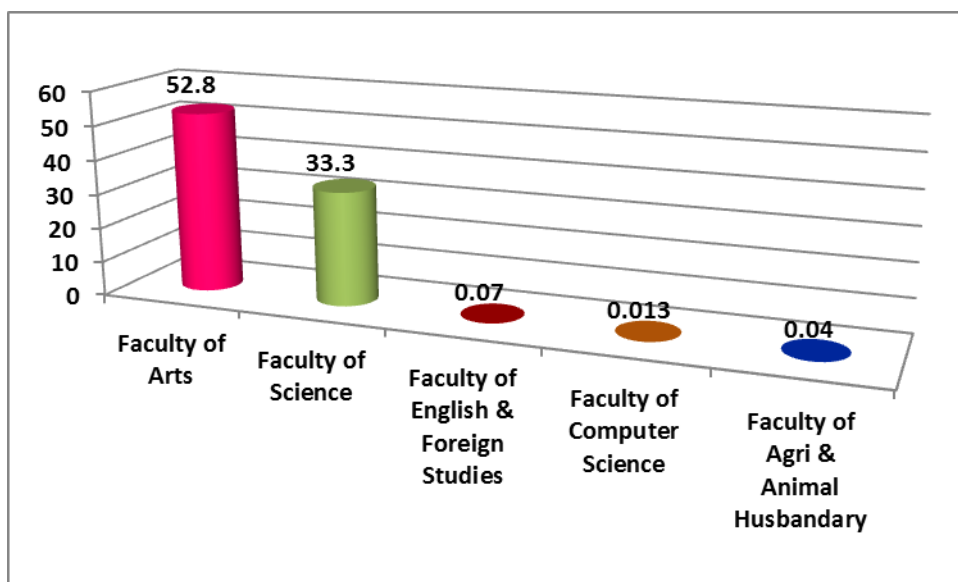
Graph - 10
Contributions by Annamalai University



Contribution by Gandhigram Rural Universities

Table 10 shows that department wise from Gandhigram Rural Universities to Shodhganga. It can be seen that out of major mainly 5 departments, departments of Arts (195) has contributed the maximum number of Thesis followed by the department of Science (123) and department of English & Foreign Studies (28). Followed by Agri and Animal Husbandry (18) The least contribution is department of Computer Science only (5)

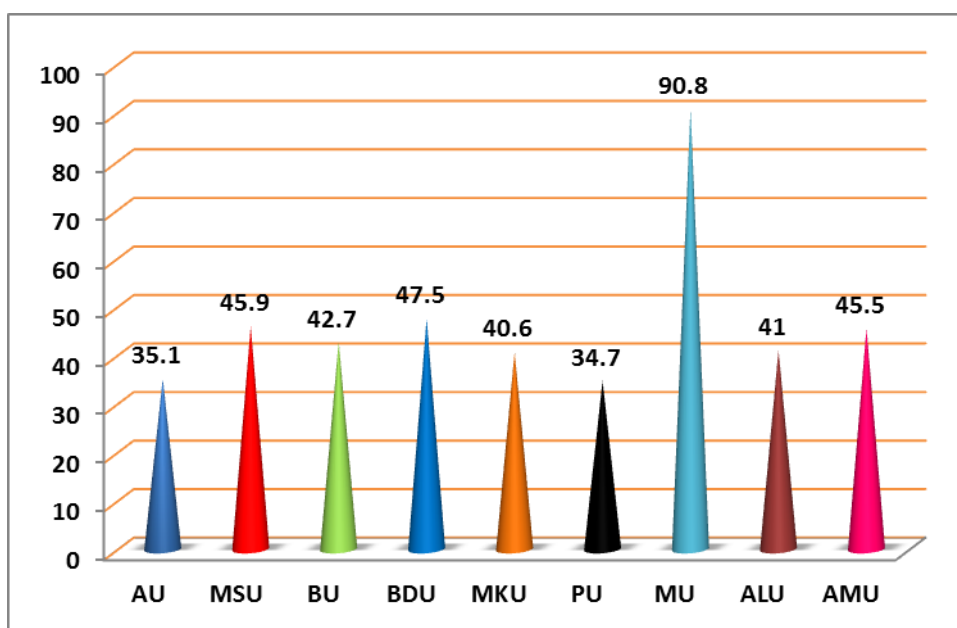
Sl.No	Name of Departments	Number of Thesis	Percentage
1	Faculty of Arts	195	52.8%
2	Faculty of Science	123	33.3%
3	Faculty of English & Foreign Studies	28	0.07%
4	Faculty of Agri & Animal Husbandry	18	0.04%
5	Faculty of Computer Science	5	0.03%
	Total	368	



Ranking of Most Contributing Department of Tamilnadu University

Sl.No	Name of Universities (TamilNadu)	Name of the Department	Number of Thesis submitted	Percentage
1	Anna Universities, Chennai	ECE	1879	35.1%
2	Manonmaniam Sundaranar Universities, Tirunelveli	Faculty of Science	1543	45.9%
3	Bharathiyar Universities. Coimbatore	Faculty of Science	1376	42.70%
4	Bharathidasan Universities, Tiruchirapalli	Faculty of Science	1354	47.5%
5	Madras Universities, Chennai	Faculty of Arts	989	90.8%
6	Madurai Kamaraj Universities, Madurai	Faculty of Science	910	40.6%
7	Periyar Universities, Salem	Faculty of Science	408	34.7%
8	Gandhigram Rural Universities, Gandhigram, Dindugal	Faculty of Science	368	1.7%
9	Alagappa Universities, Karikudi	Faculty of Science	291	41%
10	Annamalai Universities, Chidambaram	Faculty of Science	244	45%

Graph – 11
Ranking of Most Contributing Department of Tamilnadu University



Major Findings

Following are the major Findings of this study

1. There are 41 TamilNadu Universities in India. Out of which only 33 Universities are contributing to Shodhganga INFLIBNET. Total number of Thesis submitted by the 33 Universities is 23154 as on 13th September 2017.
2. Total Contribution made by the following Ten Universities is 20872 which account for 90.1% of the total contribution made from 30 universities.
3. Anna Universities rank first 5346 among Tamil Nadu State Level and also Manonmaniam Sundaranar Universities contributing in Second Place 3355 TamilNadu State level
4. Science Departments are in the leading position to contribute output to Shodhganga
5. Faculty of Electronic and Communication Engineering (Anna Universities) maximum 1879 contribution among all the faculties belonging to TamilNadu State Universities and followed by the Manonmaniam Sundaranar Universities faculty of Science contribution is 1543.

6. Out of 10 Universities, Madras University faculty of arts 989 contributed by Shodhganga

Conclusion

This is Information age and knowledge which is flowing throughout the users, academicians, researchers, all over the world, so that people can appreciate and add some more and recognize each others work, now most initiative of Open Access (OA) have been taken by the different Universities likely faculty of Arts, Science, Medical, Law, Sports, Engineering and Fine Arts. Any haow some state Universities some lagging behind in contributing Shodhganga. Any have all Universities have been aware about Shodhganga. State wise Analysis is also done to understand the demographically of users. In India the Shodhganga contribution is first state is Gujarat (17.74%) and also second State is Tamil Nadu (13.36%). So I am very much Thanks to Sudhganga INFLIBNET . Because this good initiative to higher studies particularly Research work in global citizen.

References

- GarvitaJhamb and Abdus samim (2017) Library Philosophy and Practice August 2017
- Kumar Nagesh (2015) Electronic Thesis Dissertations in Indian Universities Libraries and National Level Repository: Positions and Challenges, International Jopurnal of Research in Library Science, 1(2),18-26
- Senkupta Shantashree(2015) ETD contribution in shodhganga: a status report of universities of Maharastra , Knowledge Librarian: An International peer reviewed biligingal e-journal of Library and Information Science 2(6) , 50-75
- Shodhganga @INFLIBNET: Universities and Departments Shodhganga ,Inflibnet .ac.in N.P 2917.web 16 june 2017
- Das and Saikia (2014) International Journal of Libraries and Information science
- Das Krishna and Naba Kumar Saikia(2014) Shodhganga Repository : A Comparative Study with special Reference to the universities of Assam in 9th PLANNER, Assam 25-27 Sept 2014