

1972

EC Form 72-1726 Application Blank - Clarke- McNary Trees

Follow this and additional works at: <http://digitalcommons.unl.edu/extensionhist>

"EC Form 72-1726 Application Blank - Clarke-McNary Trees" (1972). *Historical Materials from University of Nebraska-Lincoln Extension*. 4175.

<http://digitalcommons.unl.edu/extensionhist/4175>

This Article is brought to you for free and open access by the Extension at DigitalCommons@University of Nebraska - Lincoln. It has been accepted for inclusion in Historical Materials from University of Nebraska-Lincoln Extension by an authorized administrator of DigitalCommons@University of Nebraska - Lincoln.

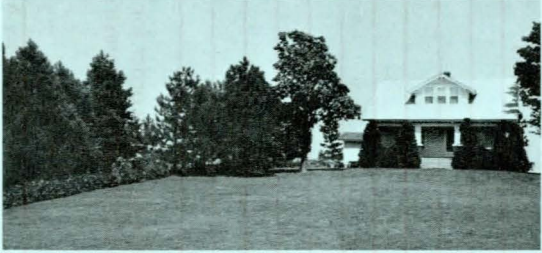
AGRI
S VertFile
85
E7
12-1726
C.2

RECEIVED
OCT 19 1972
Y. THOMPSON
LIBRARY

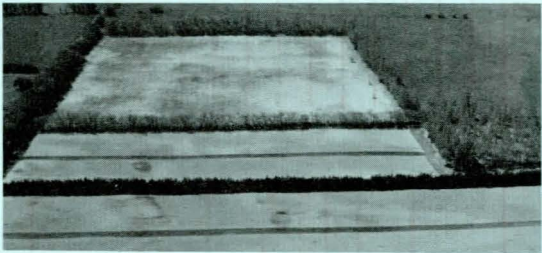
Form 72-1726

Application Blank

CLARKE-McNARY TREES



Farmstead Windbreakers



Field Windbreakers



Livestock Windbreakers

Extension Service, University of Nebraska
College of Agriculture Cooperating with the U. S.
Department of Agriculture and the
College of Home Economics
E. F. Frolik, Dean J. L. Adams, Director

