

## The New 20-35 Farm Tractor

### Specifications:

**ENGINE:** Four cylinder Twin-block, valve-in-head, Dual oiling system, splash and force feed.  
**GOVERNOR:** TACO—mounted on ball bearings, enclosed, dust-proof.  
**AIR WASHER:** TACO siphon—No moving parts.  
**IGNITION:** American Bosch—Impulse Starter.  
**CARBURETOR:** Zenith.  
**CLUTCH:** Twin Disc—Enclosed.  
**COOLING SYSTEM:** Tubular radiator, fan, pump.  
**BELT PULLEY:** 16"x7". 700 R.P.M.  
**TRANSMISSION:** Selective type sliding gear, dust-proof, shafts mounted on Hyatt roller bearings, gears run in oil.  
**SPEED:** M.P.H.: Low, 2¼ to 2½; High, 3¼ to 3½; Reverse, 2.  
**NUMBER OF WHEELS:** Four. Drive wheels, 48" x 12" face; front wheels, 32" x 6".  
**WHEELBASE:** 86".  
**TREAD:** 44".  
**DOMESTIC WEIGHT:** Fully equipped, 5400 lbs.

### Outstanding Features:

To effect real economy over horsepower, a tractor must be a one-man machine with sufficient power to handle enough plows to show a pronounced saving.

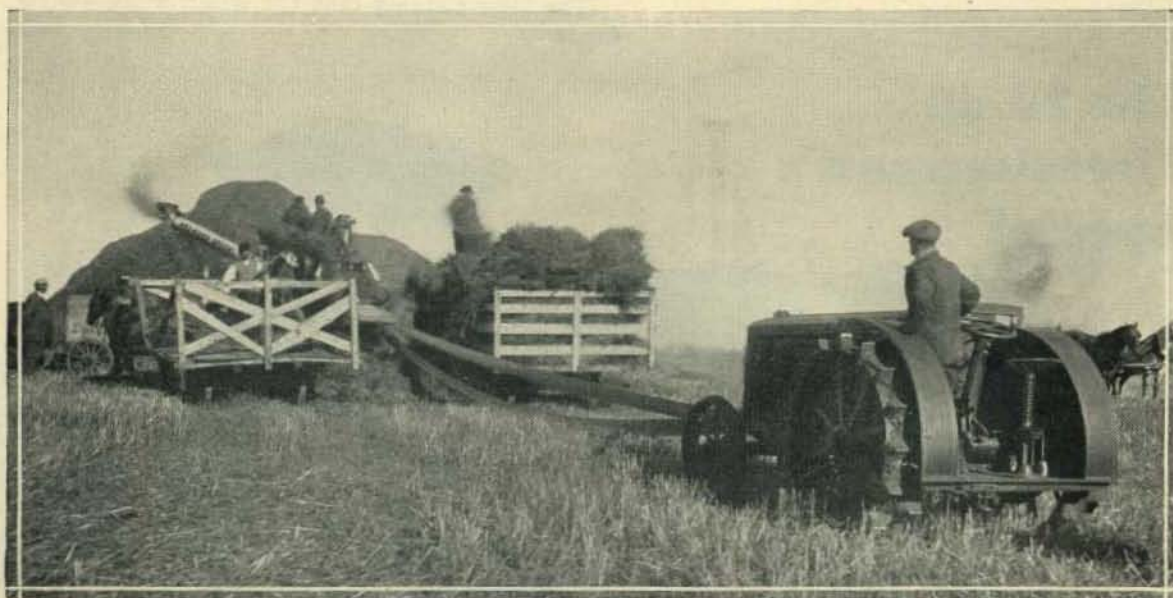
The Nichols & Shepard "Lauson-Built" 20-35 is a 3 to 4 plow tractor with a generous margin of surplus power over actual rating.

The four-cylinder engine is especially designed and built as a real heavy duty tractor motor.

Full-Jewel Hyatt and Timken roller and ball-bearing throughout.

Dust-proof in every detail with driving gear running in oil.

There are so many reasons why the Nichols & Shepard "Lauson-Built" Tractor is superior. You must have our new catalog to fully appreciate it. Write for it.



**NICHOLS & SHEPARD**

**Battle Creek, Mich.**

Printed in U. S. A.

*LAUSON-BUILT*



## The 20-40 Farm Tractor



### Specifications: 20-40 Farm Type

**ENGINE:** Four cylinder, twin-block valve-in-head type—Dual oiling system, splash and force feed.

**GOVERNOR:** TACO—Mounted on ball bearings—enclosed, dust-proof.

**AIR WASHER:** TACO siphon—No moving parts.

**IGNITION:** American Bosch—Impulse Starter.

**POWER:** Actually develops 50 H.P. at belt and 25 H.P. at draw bar.

**CARBURETOR:** Kingston.

**CLUTCH:** Twin-Disc Enclosed.

**COOLING SYSTEM:** Cellular Radiator—fan, pump.

**BELT PULLEY:** 18"x18". 600 R.P.M.

**TRANSMISSION:** Selective type sliding gear, dust-proof shafts mounted on Hyatt roller bearings—gears run in oil.

**SPEED:** M.P.H.: Low, 2¼ to 2½; High, 3¼ to 3½; Reverse, 2.

**NUMBER OF WHEELS:** Four. Drive wheels, 54" diameter, 12" face; front wheels, 36" diameter, 6" face.

Write for catalog giving specifications on 20-40 Thresherman's Special.

A larger, more powerful Nichols & Shepard "Lauson-Built" for operating large size separators and combines. The surplus power of this tractor in the Farm Type will also be appreciated where plowing conditions are extremely hard.

The Thresherman's Special Model has 20-in. heavy drive wheels, whistle, radiator guard, special thresherman's brake, special hitches front and rear, canopy top.

Large belt pulley conveniently located and readily lined up with separator, correct distribution of weight, accessibility and ease of operation are features of this machine.

The New Catalog tells the whole story—write for it.

## The 20-40 Thresherman's Special

