

## The 20-35 Farm Tractor

**T**O EFFECT real economy over horse power, a tractor must be a one-man machine with sufficient power to handle enough plows to show a pronounced saving.

Farmers who have been buying power all their lives in gas engines, motors or other forms will recall the numerous times when they wished they had purchased more power. They know that it certainly does not prolong a tractor's life to be everlastingly forcing it up to its rated horse power. This 20-35 develops enough additional power over the ordinary 3 plow tractor to actually make it an economical

buy for the farmer looking for a tractor with liberal surplus power.

The four-cylinder engine is especially designed and built as a real heavy duty tractor motor.

Full-Jewel Hyatt and Timken roller and ball bearing throughout.

Dust Proof in every detail with all gears running in oil.

The tractor is neat and compact in every detail. It handles easily in the field and has an extremely short turning radius.

### Specifications

**ENGINE:** Four cylinder Twin Block, valve in head, Dual oiling system, splash and force feed. BORE  $4\frac{1}{2}$ ". STROKE 6".

**GOVERNOR:** Taco — mounted on ball bearings, enclosed, dust proof.

**AIR WASHER:** Taco siphon — No moving parts.

**IGNITION:** High grade high tension magneto—Impulse Starter.

**CARBURETOR:** Plain tube carburetor.

**CLUTCH:** Twin Disc — Enclosed.

**COOLING SYSTEM:** Tubular radiator, fan, pump.

**BELT PULLEY:** 16"x7" 700 R.P.M.

**TRANSMISSION:** Selective type sliding gear, dust proof, shafts mounted on Hyatt roller bearings, gears run in oil.

**SPEED:** M.P.H.: Low  $2\frac{1}{4}$  to  $2\frac{1}{2}$ ; High  $3\frac{1}{4}$  to  $3\frac{1}{2}$ ; Reverse 2.

**NUMBER OF WHEELS:** Four. Drive wheels 48"x12" face: front wheels 32"x6".

**WHEELBASE:** 86".

**TREAD:** 44".

**DOMESTIC WEIGHT:** Full equipped, 5400 lbs.

**BOXED FOR EXPORT:**

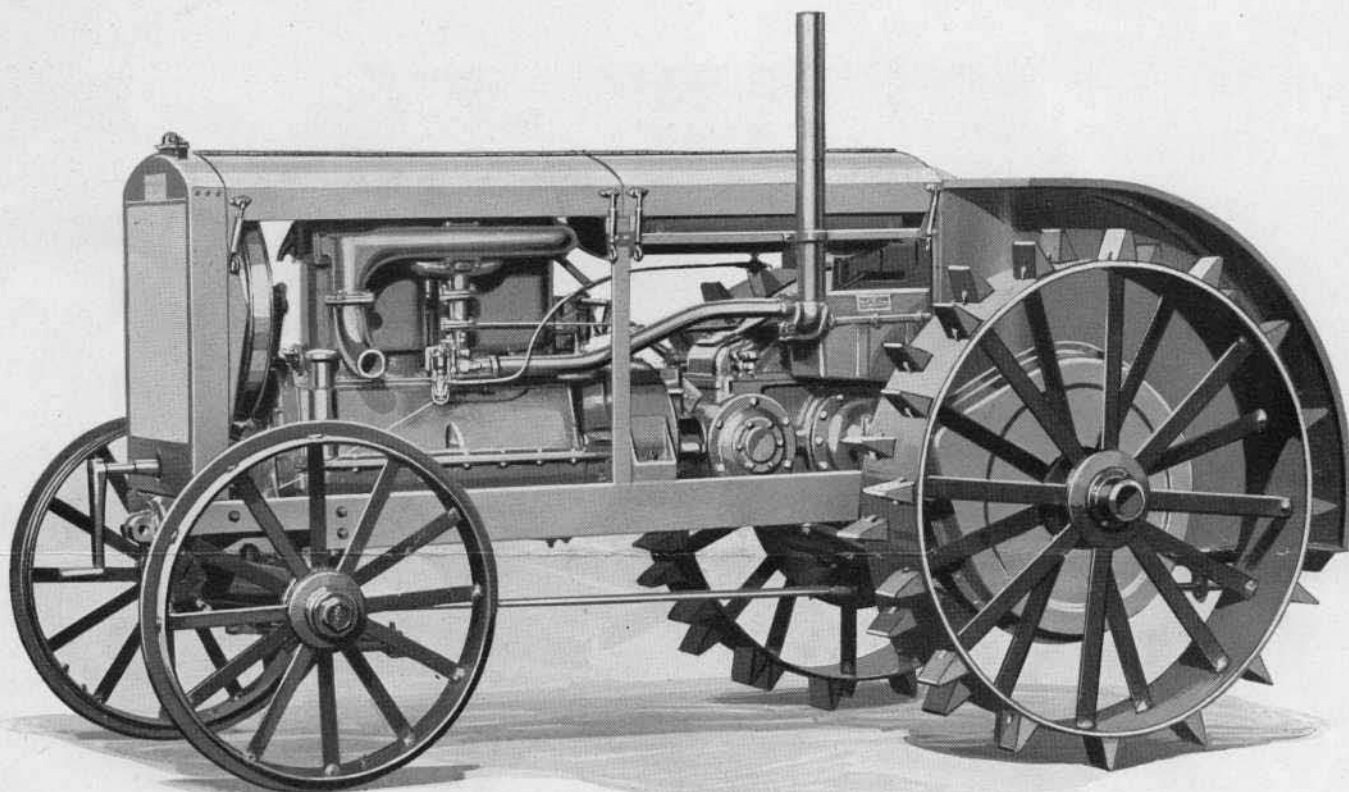
1 Box Wheels, 4'3"x3'1"x4'4".

Gross 1,950, Tare 335, Net 1,615.

1 Box Tractor: 9'7"x4'9"x4'10".

Gross 4,385, Tare 600, Net 3,785.

Weights and Dimensions Approximate.



**BELT WORK** — Fifty percent of tractor work is belt work. The large belt pulley on the Lauson is not an attachment but a part of the machine, provided for when the tractor was designed. The straight lines of the graceful Lauson hood enable the operator to line up quickly for belt work. The position of pulley is high enough to leave plenty of clearance for the belt above the front axle. No wearing out of a good thresher belt by rubbing on the front axle where a Lauson is used.

**FIELD WORK** — The operator of the average farm tractor is usually inexperienced in running this class of machinery. Many Lauson owners turn over their tractor work to the boys and devote their attention to other farm duties. The Lauson-Built is as easy to operate as an

automobile. One wheel runs in the furrow so the operator can watch his implements while the tractor practically steers itself.

As the tractor is often operated on a hill side, it is important that the weight should be distributed so that the tractor does not raise up in front when going up a steep grade. Lauson tractors do especially good work on side hills — the center of weight is low enough to hold the tractor in proper position. Lauson tractor performance on hill sides has amazed thousands of farmers, implement dealers and manufacturers of farm machinery.

No matter what working part you wish to reach, provision is made for quick and easy access. There is no delay when an unforeseen breakdown occurs. There are no long delays in the midst of the rush of farm work.

## Steering Gear

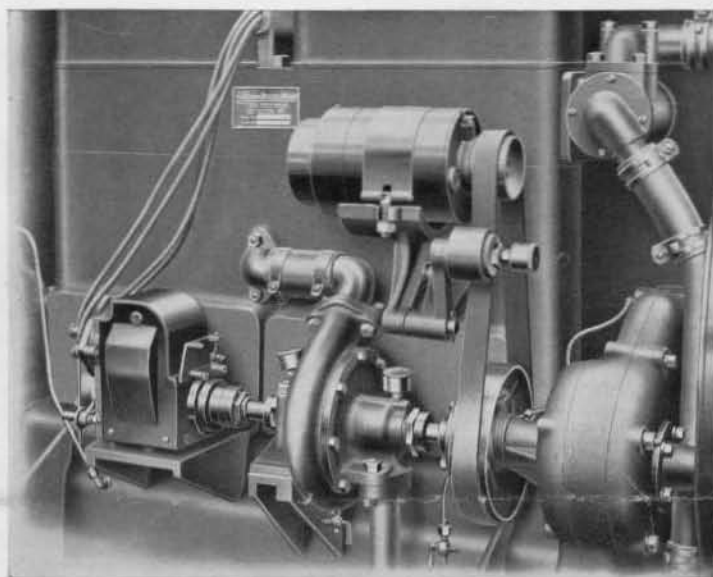


**T**HE Hannum steering gear on the 20-35 tractor has sufficient leverage to make steering easy not only in the straight ahead steering position but also when turning corners and parking; as well as quick control in the normal or straight-ahead driving position. Bearing areas are large enough to wear indefinitely without developing excessive lost motion.

The face of the worm threads is ground to a true lead thereby providing smoother operation and securing a full bearing on the threads.

With the large wearing surfaces and bearing areas in the Hannum Steering Gear, it may never be necessary to adjust them. Easily accessible adjusting screws are provided for possible need so that lost motion may be eliminated without removing shims or any part of the steering gear as is generally the case.

The Hannum Nut and Lever Steering Gear has more bearing area than any other commercial steering gear manufactured at this time. Through the natural action of the sliding nut, which displaces the lubricant, thereby distributing it to the surfaces of the moving parts, proper and thorough lubrication is maintained.

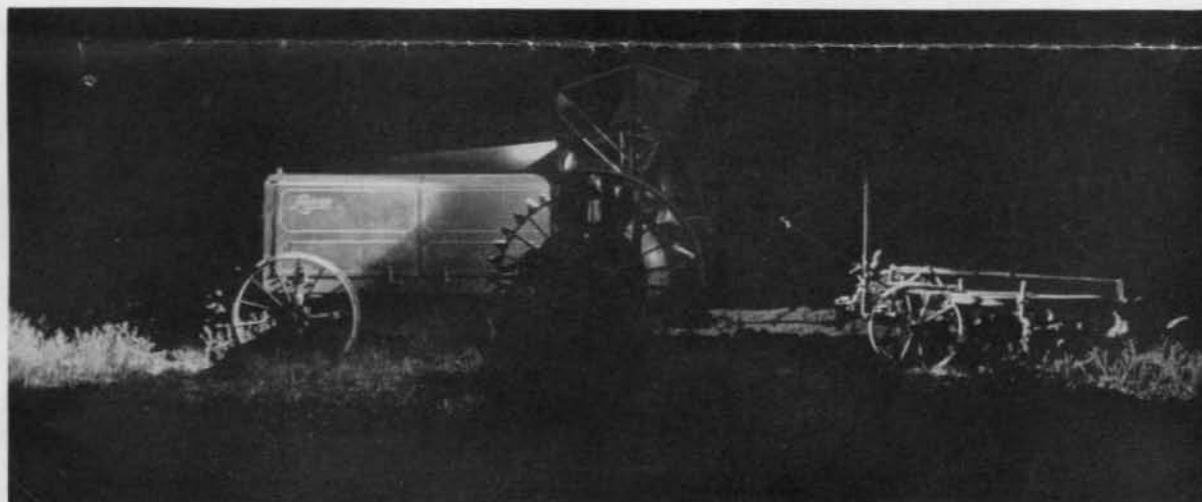


## Electric Light Equipment for Lauson Tractors

**T**HE lighting Generator is a direct current shunt wound dynamo, the outstanding feature of which is the fact that it OPERATES WITHOUT A STORAGE BATTERY. This timely improvement is the result of the application of a principle that has proven to be correct, namely, automatic regulation of the voltage supplied to the lights at varying engine speeds. It offers all the advantages of a safe, simple, and economical illumination without the

fussing with oil lamps or storage batteries.

The Lighting Generator is the ideal method for Lauson tractor illumination as it is entirely self-contained and has the advantage that it will carry the lamp load at moderate generator speeds as well as holding the lights to their full brilliancy over a wide range of engine speeds. Lighting equipment is furnished on special order.





# Lugs and Rims to Suit Every Soil Condition

## Spade Lugs

FIGURE 1. These are general utility lugs and are standard equipment on all Lauson Tractors equipped with farm wheels.

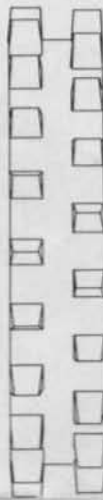


Fig. 1



Fig. 2

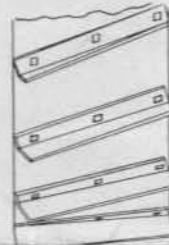


Fig. 3

## Flat Bar Lugs

FIGURE 2. This is the flat bar type of road lug used on the 20-40 tractor with heavy wheels. Figure 3 shows the 3x3 1/2" angle iron lugs furnished for the 20-40 road tractor — especially desirable for use where loose soil conditions are encountered on the road. The regular spade lugs can also be furnished with the 20-40 heavy road wheels.

## 2 1/2" Angle Iron Lugs

FIGURE 4. These angle iron lugs are used only in soft soil. They extend about four inches outside of the regular 12" tractor wheels. They can be furnished on both sizes of Lauson Tractors equipped with regular farm wheels.

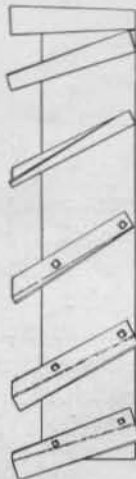


Fig. 4

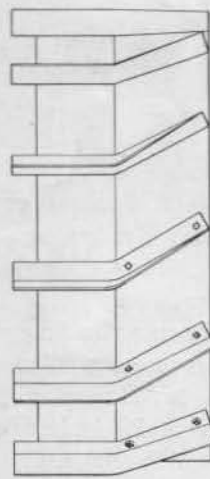


Fig. 5

## Giant 4" Angle Iron Lugs and 10" Extension Rims

FIGURE 5. This combination of 10" extension rims and 4"x26" angle iron lugs is used for rice farming and other extremely wet ground ONLY. When 10" extension rims are used the wheel surface is 22." This equipment can be furnished on both sizes of Lauson Tractors when desired when equipped with farm wheels.

## 6" Extension Rims for Rear Wheels

FOR BOTH SIZES OF TRACTORS  
EQUIPPED WITH FARM WHEELS

FIGURE 6. This extension rim should be used on plowed ground when the seed bed is being prepared. It prevents packing of the soil. This rim can be furnished either with angle iron or spade lugs. The spade lugs are regularly furnished with extension rims.



Fig. 6



Fig. 7

## Front Wheel Extension Rims

FOR BOTH SIZES OF TRACTORS  
EQUIPPED WITH FARM WHEELS

FIGURE 7. The 6" extension rims for front wheels are used in extremely loose, sandy or swampy soil, or to prevent sliding on side hill. A 3 1/4" sand rib guards against slippage and facilitates short turns. These rims should also be used to prevent packing when working over plowed ground.