

A 4-Plow Tractor within reach of Every Farmer!

Convenient
Terms
can be
arranged

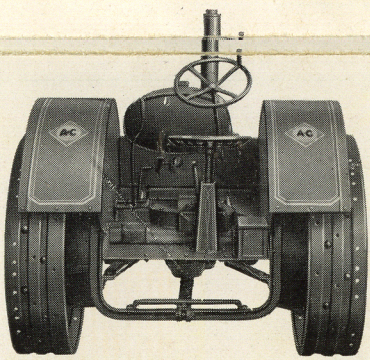
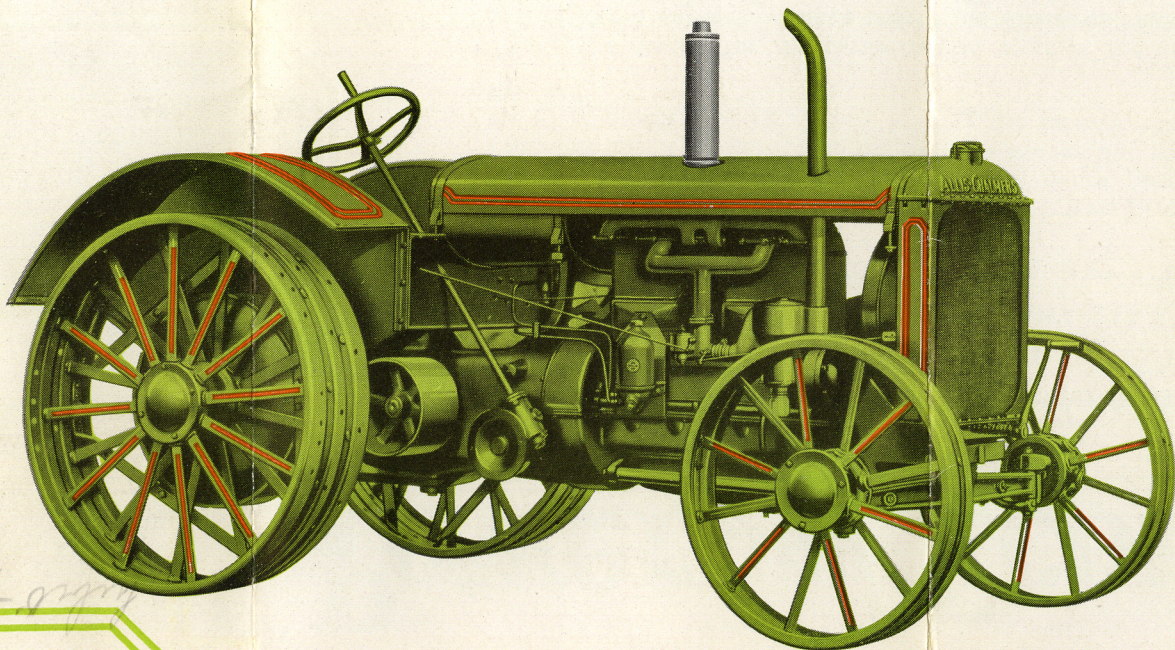
\$1295
CASH
F.O.B. FACTORY

20-35

YOU need a tractor with lots of power to do more work on your farm. The old days of a single bottom plow in back of two horses are past. So are the other methods of yesterday. It is a power farming age, and a powerful tractor is one of the necessary tools you need to have your farm produce at a profit.

Your tractor should have power to do all of your work, and do it when extra push is necessary—when it counts most. It should do the work easily, without strain or overload. It should enable you to do several operations at one time, such as plowing and discing when necessary. It should help you to gain time on certain operations, so your efforts can be directed to other work. That means PROFIT!

The Allis-Chalmers 20-35 meets all these conditions and gives you a tractor which costs less per horsepower than any other tractor on the market. Every spoke in the wheels, every gear in the transmission and every nut, screw and bolt is designed as part of a complete tractor which gives you a full 20-35 horsepower, plus a big reserve of power.



94 Drop Forgings

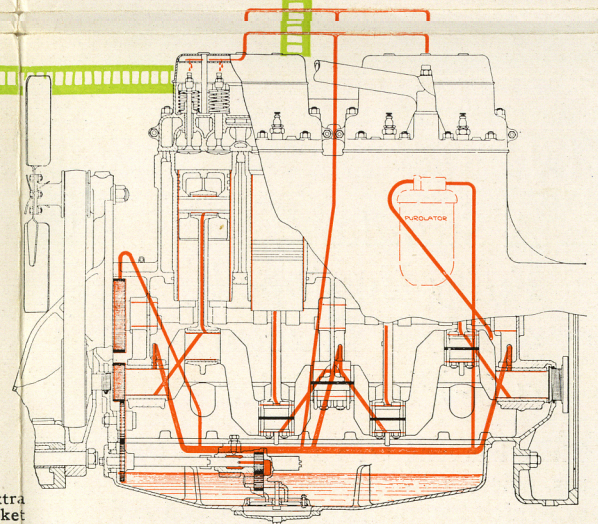
Drop forgings are pieces of steel pounded under powerful steam hammers until all the impurities are beaten out, the separate little units composing the metal are pounded together and then formed into shape. They are infinitely stronger than castings, yet they weigh less.

Fully 94 drop-forgings go into the construction of every Allis-Chalmers 20-35 Tractor. These include the front axle, crankshafts, gears, connecting rods and many other parts where the service is particularly severe. No other tractor has this number of drop forgings—it's costly work. Yet we haven't increased our price.

Improved Valve Construction

Allis-Chalmers now uses a special silchrome valve, extra hard and made to throw-off heat quickly. A water jacket in the cylinder head completely encircles each valve as close to the head as possible. The valve seats are wide, providing a big cooling surface. The cylinder head material is very hard, containing 1% nickel.

This type of valve construction has been carefully tested in Allis-Chalmers laboratories and in field work throughout the entire past year. It provides for maximum operating efficiency under the severest service, definitely proving that another achievement in tractor design can be credited to Allis-Chalmers.



Pressure-Type Lubrication

It is only necessary to put oil in the crankcase of the Allis-Chalmers 20-35 Tractor. A gear-driven pump forces the oil under pressure to all main bearings, connecting rod bearings, piston pins and timing gears.

Every moving part in the motor is thoroughly lubricated with this system. Even the rocker arms are automatically lubricated through a lead from the pressure system. No worry—a gauge on the dash tells you that the oil pressure is correct and that wear and friction don't get a chance on the Allis-Chalmers 20-35.

Three Main-Bearing Crankshaft

Three big, oversize main bearings support the crankshaft in the Allis-Chalmers 20-35 Tractor. Each bearing is provided with four big studs, making the strongest main-bearing construction that can be built in a tractor.

A full 12 1/4" of main bearing surface is provided on which the drop-forged, chrome vanadium steel crankshaft is supported. With this extra-duty construction there is no possibility of bending or warping under heavy loads.

Here, where the greatest strain comes is the greatest strength in the Allis-Chalmers 20-35 Tractor.

Run 100 Hours Without Changing Oil

Last year we said you wouldn't have to change oil but once in 60 hours of operation. Now it's 100 hours before it will be necessary to change the oil in the crankcase. Remarkable? Perhaps, but we know that the oil is in fine condition, it has a good color and body, with no impurities even after this continuous operation.

Owners have written this past year, sending samples of oil which was used for over 100 hours and an analysis showed it to be good for further lubrication. Figure the economy in this!

Oil PurOlator

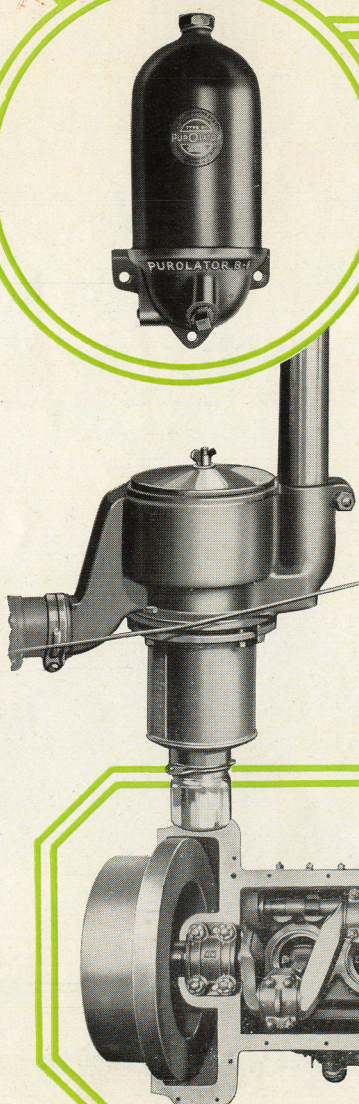
Used as standard equipment on the Allis-Chalmers 20-35 Tractor for over a year and resulting in more operating economy than any other accessory. Adds to the life of the motor by thoroughly cleaning all the oil 15 times every hour.

No moving parts—cannot wear out. Filter element is easily replaced. Worth the cost of a new tractor itself! Why be satisfied without a PurOlator when there's no extra charge for one on the Allis-Chalmers 20-35?

Air Cleaner

Another reason for the long life of the Allis-Chalmers 20-35 Tractor. A double-action air-cleaner that takes ALL the dirt, dust and grit before it reaches the motor.

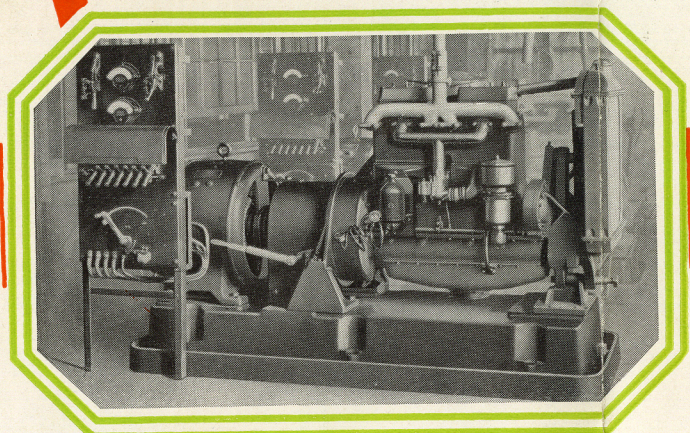
Directly connected to the breather pipe which reaches out, above the dust and dirt close to the ground, over the top of the tractor. Centrifugal action and oil-filter screen with no moving parts, squeeze the air clean. Nothing to get out of order or wear out.



Allis-Chalmers

20-35 TRACTORS

Proof of Power and Economy



Allis-Chalmers 20-35 Tractor motor on the electrical testing machine, where it stays for over 4 hours.

To meet all possible conditions — from heavy plowing in the gumbo of the western plains, to threshing, combining and building roads, the Allis-Chalmers 20-35 Tractor must pass tests harder than its toughest job ever will be.

It's not an easy matter to build the world's lowest priced 4-plow tractor and have it meet every conceivable kind of work and every possible soil condition. Allis-Chalmers has a reputation to maintain, however, and rigidly insists that every tractor must perform better, before leaving the factory, than will ever be expected in the field.

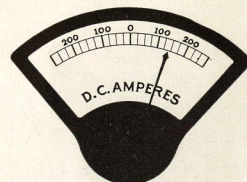
That's the reason for the three careful tests in the shop, under the supervision of 3 different experts. That's why Allis-Chalmers maintains an extensive laboratory for the testing of materials, methods and accessories. And that's why careful field tests are made, under worse conditions than you'll ever have. That's why we stand back of every one and know it will perform.



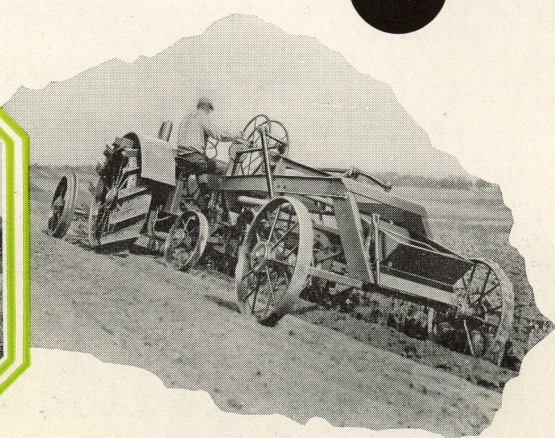
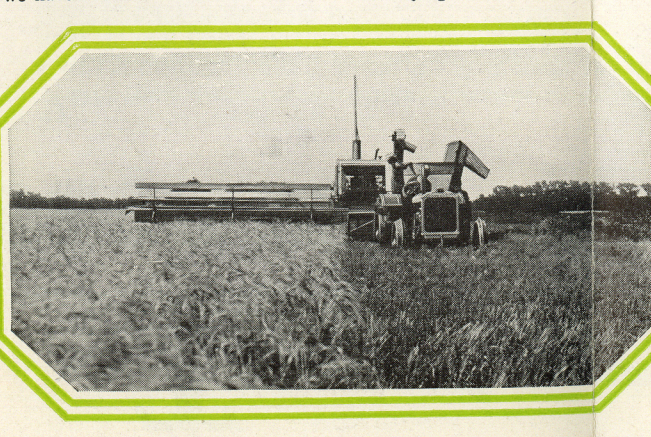
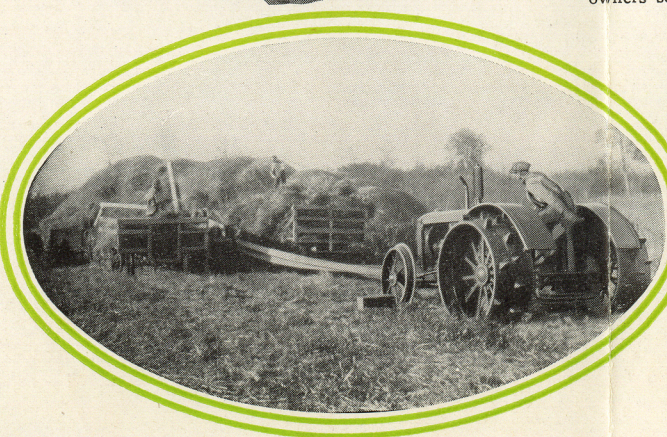
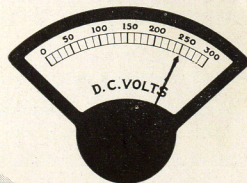
An actual field test, pulling 4-14" moldboard plows in the toughest kind of soil.

To successfully operate a 32" separator requires lots of steady power. Tests and hundreds of owners say we have it.

Pulling 16' combines, loaded with grain, when the going is heavy requires POWER. Severe service which the A-C 20-35 handles with flying colors.



An ampere meter and a volt meter used on the electrical testing machine to test horsepower. Every tractor must register 110 amperes and 250 volts, or the equivalent of 43 horsepower, before being approved.



Building roads with the Allis-Chalmers 20-35 Tractor and a heavy grader with an 8' blade gives it the hardest kind of service.

Now!

A Standard, Fully Equipped 4-Plow Tractor at a 3-Plow Price

There has long been a need for a tractor, priced within reach of every farmer, which has the power, the speed and the construction to handle the work on a farm in a big way, at a profit.

The Allis-Chalmers 20-35 Tractor is powerful, speedy and low-priced. It can be pushed beyond the limit of most tractors for plowing, planting and harvesting — without strain and without overloading. It is built to handle easily and smoothly 4-14" plows, a 32" separator, a 16' combine, a 10' one-way disc plow, a 4 row lister, or smaller implements arranged in tandem and pulled at one time.

Allis-Chalmers Again Holds Lead —

With a 20-35 tractor at this price Allis-Chalmers steps far into the lead which we have always held in the 4-plow tractor class. Far superior to any tractor built before, made of the best materials on a production basis which brings the cost way down, the Allis-Chalmers 20-35 is practically without competition. Where else can you buy the power, the material, the construction and the work it will do at anywhere near the price?

SPECIFICATIONS

Allis-Chalmers 20-35 Tractor

CAPACITIES—Will handle 4-14" plows, a 32" separator, a 16' combine, with grain, a 10' one-way disc plow, a 4 row lister or smaller implements in tandem.

DRAWBAR PULL—In low gear this tractor is guaranteed to pull 3750 pounds and in high gear it will pull 2875 pounds.

TRACTOR SPEED—2½ to 3¼ miles per hour. Speed is easily controlled and regulated.

WEIGHT—The net weight of the tractor is 6,000 pounds.

MOTOR—Own design and make, four cylinder, water-cooled by pump circulation. Bore, 4¾", stroke 6½". Displacement 461 cubic inches.

MOTOR SPEED—Under full load the motor speed is 930 R.P.M. and is under governor control.

CYLINDERS—Removable cylinder sleeves set in the block. Made of nickel iron, twice as hard as ordinary iron.

CRANKSHAFT—Three-bearing type, accurately made and carefully balanced. Made of Chrome Vanadium Steel. Bronze-backed, babbitt lined, interchangeable main bearings.

CONNECTING RODS—Drop-forged, heat treated I-Beam section. Connecting rod bearings, bronze-backed, babbitt-lined, adjustable.

VALVES—Special silchrome metal. Diameter 2". Over-head valve system.

LUBRICATION SYSTEM—Pressure lubricating system from gear-driven pump to all main bearings, connecting rod bearings, piston pins and rocker arms. All moving parts fitted with Alemite-Zerk fittings for pressure greasing.

FUEL SUPPLY SYSTEM—Tank with 32-gallon capacity, gravity feed, provided with sediment trap.

COOLING SYSTEM—Water, impeller pump; fin-and-tube type radiator of high cooling efficiency. Four-blade fan, 22" in diameter. Capacity 10 gallons.

IGNITION—Eisemann magneto with impulse starter.

GOVERNOR—Our own design and make. Very sensitive and positive in action. Centrifugal type. Variable speed.

TRANSMISSION—Unit power plant type, selective sliding; 2 speeds forward, 1 reverse. Gears of forged steel accurately cut and shaped.

STEERING GEAR—Semi-reversible type, 18" diameter hand wheel. Very easy steering. Take-up provided against wear.

FRONT AXLE—Own make, forged steel. I-beam section. Timken Roller Bearings on wheel spindles.

WHEELS—French and Hecht steel wheels.

TURNING RADIUS—15'-5" extreme outside radius.

WHEELBASE—90½ inches.

BELT PULLEY—13" diameter x 8½" wide.

WHEEL EQUIPMENT—Standard equipment provides each tractor with front-wheel guide rims and either angle-cleats or forged spade lugs for the rear wheels.

The Allis-Chalmers Manufacturing Company reserves the right to make changes in prices and specifications or add improvements at any time without being obliged to install same on tractors previously sold.

ALLIS-CHALMERS MFG. CO.

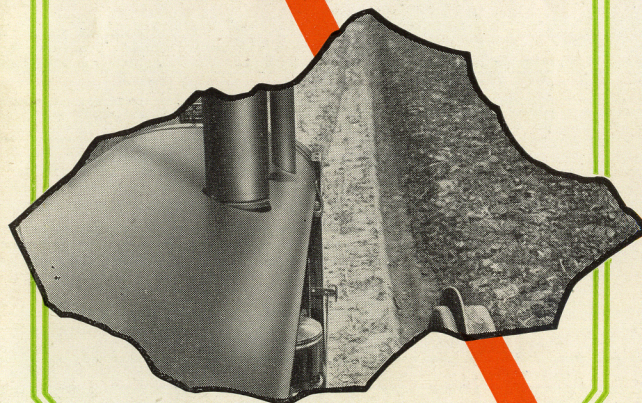
Tractor Division

MILWAUKEE

WISCONSIN

MORE POWER

to do
Better Farming,
Faster and at
Less Cost



ALLIS-CHALMERS MFG. CO.

Tractor Division

MILWAUKEE

WISCONSIN