

June 2002

Case 3237: *Leucopelaea albescens* Bates, 1891 (Insecta, Coleoptera): proposed validation of the lectotype designation

Andrew Smith
asmith@unl.edu

Follow this and additional works at: <http://digitalcommons.unl.edu/entomologypapers>



Part of the [Entomology Commons](#)

Smith, Andrew, "Case 3237: *Leucopelaea albescens* Bates, 1891 (Insecta, Coleoptera): proposed validation of the lectotype designation" (2002). *Papers in Entomology*. 27.

<http://digitalcommons.unl.edu/entomologypapers/27>

This Article is brought to you for free and open access by the Museum, University of Nebraska State at DigitalCommons@University of Nebraska - Lincoln. It has been accepted for inclusion in Papers in Entomology by an authorized administrator of DigitalCommons@University of Nebraska - Lincoln.

Case 3237

***Leucopelaea albescens* Bates, 1891 (Insecta, Coleoptera): proposed validation of the lectotype designation**

Andrew Smith

W436 Nebraska Hall, Division of Entomology, University of Nebraska State Museum, Lincoln, NE 68588-0514, U.S.A. (e-mail: asmith@unlserve.unl.edu)

Abstract. The purpose of this application is to validate the lectotype designation of *Leucopelaea albescens* Bates, 1891 under Article 86.1.2 of the Code. The nominal species has very recently been considered a junior synonym of *Platycoelia lutescens* Blanchard, 1851, the name for a scarab beetle (family SCARABAEIDAE) from the Andes in Ecuador, Peru and southern Colombia. The lectotype designation was made under the provisions of the third (1985) edition of the Code in a paper that was accepted for publication in November 1999. However, the paper was not published until May 2000, after the fourth (1999) edition of the Code had come into operation. The lectotype designation was made without an express statement of its taxonomic purpose and is invalid under Article 74.7.3 of the fourth edition of the Code.

Keywords. Nomenclature; taxonomy; Coleoptera; SCARABAEIDAE; *Leucopelaea*; *Leucopelaea albescens*, *Platycoelia lutescens*, scarab beetle; Andes Mountains; South America.

1. Smith & Paucar (2000, pp. 408–409) designated a lectotype for *Leucopelaea albescens* Bates, 1891 (p. 30, pl. facing p. 31) and for the first time considered the nominal species to be a junior synonym of *Platycoelia lutescens* Blanchard, 1851 (p. 227) (family SCARABAEIDAE), a scarab beetle that is used as a food source by the people of the Ecuadorian Highlands, South America. The paper was submitted on 12 August 1999 and accepted for publication on 23 November 1999. These dates were explicitly stated in Smith & Paucar (2000, p. 414).

2. The lectotype designation of *Leucopelaea albescens* was proposed under the provisions of the third (1985) edition of the Code that was in operation at the time the paper was written and before the fourth (1999) edition of the Code came into force on 1 January 2000. As a result, the paper did not contain an express statement of the taxonomic purpose of the lectotype designation (see Article 74.7.3 of the fourth edition of the Code).

3. Article 86.1.2 of the Code states that ‘if an author submits for publication before 1 January 2000 a work containing names and nomenclatural acts proposed under the provisions of the third (1985) edition of the Code which was then in force, but the work is not published until after 31 December 1999, the names and acts are not to be set aside on the grounds that they do not comply with the changed provisions of the fourth edition. The Commission should be asked to validate the names or acts (and is empowered to do so without giving advance notice)’.

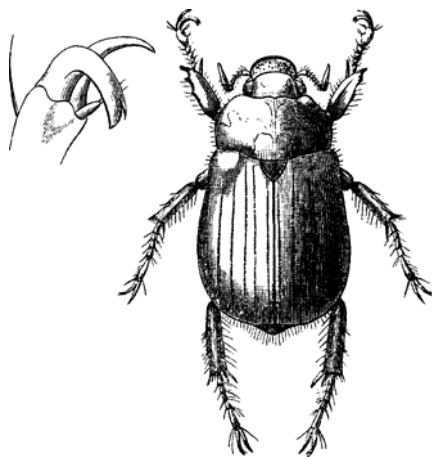
4. The International Commission on Zoological Nomenclature is accordingly asked:

- (1) to validate the lectotype designation for *Leucopelaea albescens* Bates, 1891 by Smith & Paucar (2000) under Article 86.1.2 of the Code;
- (2) to place on the Official List of Generic Names in Zoology the name *Leucopelaea* Bates, 1891 (gender: feminine), type species by monotypy *Leucopelaea albescens* Bates, 1891;
- (3) to place on the Official List of Specific Names in Zoology the following names:
 - (a) *albescens* Bates, 1891, as published in the binomen *Leucopelaea albescens* and as defined by the lectotype designated by Smith & Paucar (2000) and validated by the Commission in (1) above (specific name of the type species of *Leucopelaea* Bates, 1891 and a junior synonym of *Platycoelia lutescens* Blanchard, 1851);
 - (b) *lutescens* Blanchard, 1851, as published in the binomen *Platycoelia lutescens* (senior synonym of *Leucopelaea albescens* Bates, 1891, the type species of *Leucopelaea* Bates, 1891).

References

- Bates, H. W.** 1891. Coleoptera. Pp. 7–39 in Whymper, E. (Ed.), *Supplementary appendix to travels amongst the great Andes of the Equator*. Murray, London.
- Blanchard, E.** 1851. Classe des insectes. Ordre des coléoptères. Pp. 1–240 in Milne-Edwards, H., Blanchard, E. & Lucas, H. (Eds.), *Catalogue de la collection entomologique du Muséum d'Histoire Naturelle de Paris*, vol. 1. Gide et Baudry, Paris.
- Smith, A.B.T. & Paucar, A.** 2000. Taxonomic review of *Platycoelia lutescens* (Scarabaeidae: Rutelinae: Anoplognathini) and a description of its use as food by the people of the Ecuadorian Highlands. *Annals of the Entomological Society of America*, **93**(3): 408–414.

Comments on this case are invited for publication (subject to editing) in the *Bulletin*; they should be sent to the Executive Secretary, **I.C.Z.N.**, c/o The Natural History Museum, Cromwell Road, London SW7 5BD, U.K. (e-mail: iczn@nhm.ac.uk).



The illustration of *Leucopelaea albescens* that accompanied the original description by Bates (1891). Dorsal habitus and close-up of the anterior claw of the male. Body length 22 mm.