

2011

# *Schistosoma* comparative genomics: integrating genome structure, parasite biology and anthelmintic discovery

Martin T. Swain  
*Aberystwyth University*

Denis M. Larkin  
*Aberystwyth University*

Conor R. Caffrey  
*University of California - San Francisco*

Stephen J. Davies  
*Uniformed Services University of the Health Sciences*

Alex Loukas  
*James Cook University*

*See next page for additional authors*

Follow this and additional works at: <http://digitalcommons.unl.edu/usuhs>

 Part of the [Medicine and Health Sciences Commons](#)

Swain, Martin T.; Larkin, Denis M.; Caffrey, Conor R.; Davies, Stephen J.; Loukas, Alex; Skelly, Patrick J.; and Hoffmann, Karl F., "Schistosoma comparative genomics: integrating genome structure, parasite biology and anthelmintic discovery" (2011). *Uniformed Services University of the Health Sciences*. 91.  
<http://digitalcommons.unl.edu/usuhs/91>

This Article is brought to you for free and open access by the U.S. Department of Defense at DigitalCommons@University of Nebraska - Lincoln. It has been accepted for inclusion in Uniformed Services University of the Health Sciences by an authorized administrator of DigitalCommons@University of Nebraska - Lincoln.

---

**Authors**

Martin T. Swain, Denis M. Larkin, Conor R. Caffrey, Stephen J. Davies, Alex Loukas, Patrick J. Skelly, and Karl F. Hoffmann

# *Schistosoma* comparative genomics: integrating genome structure, parasite biology and anthelmintic discovery

Martin T. Swain<sup>1\*</sup>, Denis M. Larkin<sup>1\*</sup>, Conor R. Caffrey<sup>2</sup>, Stephen J. Davies<sup>3</sup>, Alex Loukas<sup>4</sup>, Patrick J. Skelly<sup>5</sup> and Karl F. Hoffmann<sup>1</sup>

<sup>1</sup> Institute of Biological, Environmental and Rural Sciences (IBERS), Aberystwyth University, Aberystwyth, UK

<sup>2</sup> Sandler Centre for Drug Discovery, California Institute for Quantitative Biosciences (QB3), University of California San Francisco (UCSF), San Francisco, CA, USA

<sup>3</sup> Department of Microbiology and Immunology, Uniformed Services University of the Health Sciences, Bethesda, MD, USA

<sup>4</sup> School of Public Health, Tropical Medicine and Rehabilitation Sciences, James Cook University, Cairns, Australia

<sup>5</sup> Molecular Helminthology Laboratory, Division of Infectious Diseases, Department of Biomedical Sciences, Tufts University, Cummings School of Veterinary Medicine, Grafton, MA, USA

*Schistosoma* genomes provide a comprehensive resource for identifying the molecular processes that shape parasite evolution and for discovering novel chemotherapeutic or immunoprophylactic targets. Here, we demonstrate how intragenus and intergenus comparative genomics can be used to drive these investigations forward, illustrate the advantages and limitations of these approaches and review how post-genomic technologies offer complementary strategies for genome characterisation. Although sequencing and functional characterisation of other schistosome/platyhelminth genomes continues to expedite anthelmintic discovery, we contend that future priorities should equally focus on improving assembly quality, and chromosomal assignment, of existing schistosome/platyhelminth genomes.

## Comparative genome basics

July 2009 marked a seminal date in the history of parasite genomics, helminthology and evolutionary biology. After more than 20 years of collaborative research, both *Schistosoma japonicum* [1] and *Schistosoma mansoni* [2] draft genomes were elucidated using whole-genome shotgun sequencing (see Glossary). Along with *Schistosoma haematobium*, these parasitic trematodes are responsible for most cases of human hepatosplenic (*S. japonicum* and *S. mansoni*) and urinary (*S. haematobium*) schistosomiasis [3], a chronic and morbid neglected tropical disease afflicting hundreds of millions of people in sub-Saharan Africa, Asia and South America [4]. Information contained in these genomes has fuelled optimism that novel drug targets, vaccine candidates and immunomodulatory gene products will be found leading to the development of urgently needed control strategies [5,6].

However, to comprehensively interrogate this vast amount of sequence information, comparative genome investigations are necessary. Comparative genomics can

## Glossary

**Acoelomate:** schistosomes lack a coelom (an internal fluid filled body cavity) and instead, are comprised of a solid, triploblastic (ectoderm, mesoderm and endoderm), bilaterally symmetrical, body plan. Owing to the acoelomate (lacking a coelom) nature, schistosome organs develop in direct contact with these triploblastic tissues and not in fluid filled cavities.

**BAC (bacterial artificial chromosome):** a DNA construct used in whole-genome, shotgun sequencing projects that can be propagated through *Escherichia coli*. Genomic DNA insert sizes of 150–350 kb are typically found within BACs. BAC DNA constructs (found in Sm1 and CHORI 103 BAC libraries) were used to map genome scaffolds to *S. mansoni* chromosomes via FISH.

**Comparative genomics:** an informatics based technique used to compare the DNA sequences that comprise draft or finished genomes of organisms within the same phylum or across different phyla. By identifying similarities (homologous synteny blocks, HSBs) and differences (evolutionary breakpoint regions, EBRs) across genomes, schistosome comparative genomics attempts to: (i) provide insight into the processes that shape species evolution, (ii) identify essential genes suitable for chemotherapy development and (iii) predict potential immunoprophylactic gene products. For this review, intragenus (comparing draft *S. mansoni* and *S. japonicum* genomes) and intergenus (comparing draft *Schistosoma* genomes to comparator genomes) comparative genomics analyses are discussed.

**Contig:** a contiguous sequence of DNA assembled from overlapping cloned DNA fragments. The *S. mansoni* genome was assembled from 50 376 contigs and the *S. japonicum* genome was assembled from 95 265 contigs.

**Evolutionary breakpoint regions (EBRs):** a non-aligning, genomic interval found between two adjacent HSB boundaries. These can comprise interchromosomal or intrachromosomal rearrangements. At 100 kb resolution 52 EBRs were found, whereas at 10 kb resolution 477 EBRs were uncovered.

**FISH (fluorescence in situ hybridisation):** an experimental technique by which genome scaffolds are physically mapped to chromosomes and visualised by fluorescence microscopy. Upon publication, 43% of the *S. mansoni* genome assembly was unambiguously assigned to the seven autosomes and the ZW sex-determining pairs. A total of 81% of the *S. mansoni* genome assembly (version 5.0) has now been physically mapped to the karyotype.

**Gap:** a portion in the scaffold that is linked to two sequence verified contigs but has not been sequenced.

**Gene ontology (GO):** a standardised vocabulary of gene product attributes that is species neutral and applicable to both prokaryotes and eukaryotes. See <http://www.geneontology.org/> for more information.

**Homologous synteny blocks (HSBs):** a minimum of two adjacent markers in the same chromosome/scaffold between *S. mansoni* and *S. japonicum* genomes that share the same order in both species without interruption by an HSB from a different region of the same chromosome/scaffold or from a different chromosome/scaffold. In this preliminary intra-*Schistosoma* comparative genome analysis, HSBs of 100 kb and 10 kb were considered.

**Interchromosomal rearrangements:** an intraspecies genomic rearrangement that takes place between different *Schistosoma* chromosomes. At 100 kb resolution 10 interchromosomal rearrangements were found, whereas at 10 kb resolution 67 EBRs were uncovered.

Corresponding author: Hoffmann, K.F. ([krh@aber.ac.uk](mailto:krh@aber.ac.uk)).

\* Authors contributed equally to the *de novo* intragenus comparative genomic analysis reported here.

## Review

**Intrachromosomal rearrangements:** an intraspecies genomic rearrangement that occurs within the same *Schistosoma* chromosome. At 100 kb resolution 42 intrachromosomal rearrangements were found, whereas at 10 kb resolution 410 intrachromosomal rearrangements were uncovered.

**Resolution:** the length threshold (in bps) that defines a HSB. For 100 kb resolution, all HSBs shorter than 100 kb are excluded from further analyses. Likewise, for 10 kb resolution, all HSBs shorter than 10 kb are excluded from further analyses.

**Scaffold:** a reconstructed portion of the genome made by assembling overlapping contigs and gaps. The 50 376 *S. mansoni* contigs were assembled into 5745 scaffolds and the 95 265 *S. japonicum* contigs were assembled into 25 048 scaffolds. These scaffolds comprised the draft genome sequences of each schistosome species.

**Schistosomulum:** a schistosome lifecycle stage that develops immediately after cercarial penetration of the definitive vertebrate host. Characteristic features of this developmental form include a tegumental heptalaminar (seven membranes comprise two opposing trilaminar lipid bilayers) covering and an ability to initiate haematophagy (blood feeding). The schistosomulum is believed to be a major target of protective host immune responses [51].

**Tegument:** a protective syncytium layer sandwiched between the hepatolaminar surface covering and the acoelomate schistosome body plan. Nucleated cell bodies situated below the tegument produce the diverse biomolecules and vesicles that are transported throughout the syncytium. Owing to the positional (host-parasite interface) and protective nature of this structure [55], proteins shuttled from subtegumental cell bodies to the hepatolaminar membrane surface are of interest for vaccinologists.

**Whole-genome shotgun sequencing:** a genome sequencing strategy, by which fragmented genomic DNA (gDNA) is randomly sequenced, assembled into overlapping contiguous sequences (contigs) and built into large genome scaffolds. Scaffolds are subsequently assembled into whole draft genomes of the studied organism. Whole-genome shotgun sequencing of the *S. mansoni* genome (363 Mb at 6X coverage) was initiated with mixed-sex cercariae gDNA, whereas the *S. japonicum* genome (397 Mb at 6X coverage) was elucidated by gDNA isolated from mixed-sex adult schistosomes.

**Z/W sex-determination pair:** the diploid schistosome genome is maintained across seven autosomal and one Z/W sex-determining chromosomal pairs. The gender of individual schistosomes is dependent upon inheritance of these Z/W sex-defining chromosomes. A female schistosome will, therefore, contain a ZW combination of sex-determining chromosomes, whereas a male schistosome will contain a ZZ combination. Owing to challenges with physical mapping of the *S. mansoni* assembly (version 5.0) to individual Z or W chromosomes, a concatenated ZW description is indicated (in this review as well as in the *S. mansoni* genome description [2]). Further studies undoubtedly will facilitate physical mapping of the most recent genome assembly to specific Z and W chromosomal regions.

be defined on many levels, but for the purpose of this review, we will discuss how intergenus and intragenus genome analyses are shaping schistosome post-genomic activities. Intergenomics analyses involve cross-phylum genome comparisons in the primary search for gene loss/gene gain events. Both schistosome genome reports employed intergenomics comparative genomics by contrasting the *Schistosoma* genomes with other genomes to discover features specific to, or shared between, parasitic and non-parasitic organisms [1,2]. This approach is similar to that performed for other parasitic helminth genome projects (e.g. *Brugia malayi* [7] or *Trichinella spiralis* [8]) and has identified metabolic chokepoints, conserved druggable targets, expanded gene families and protein domain loss within the *Schistosoma*.

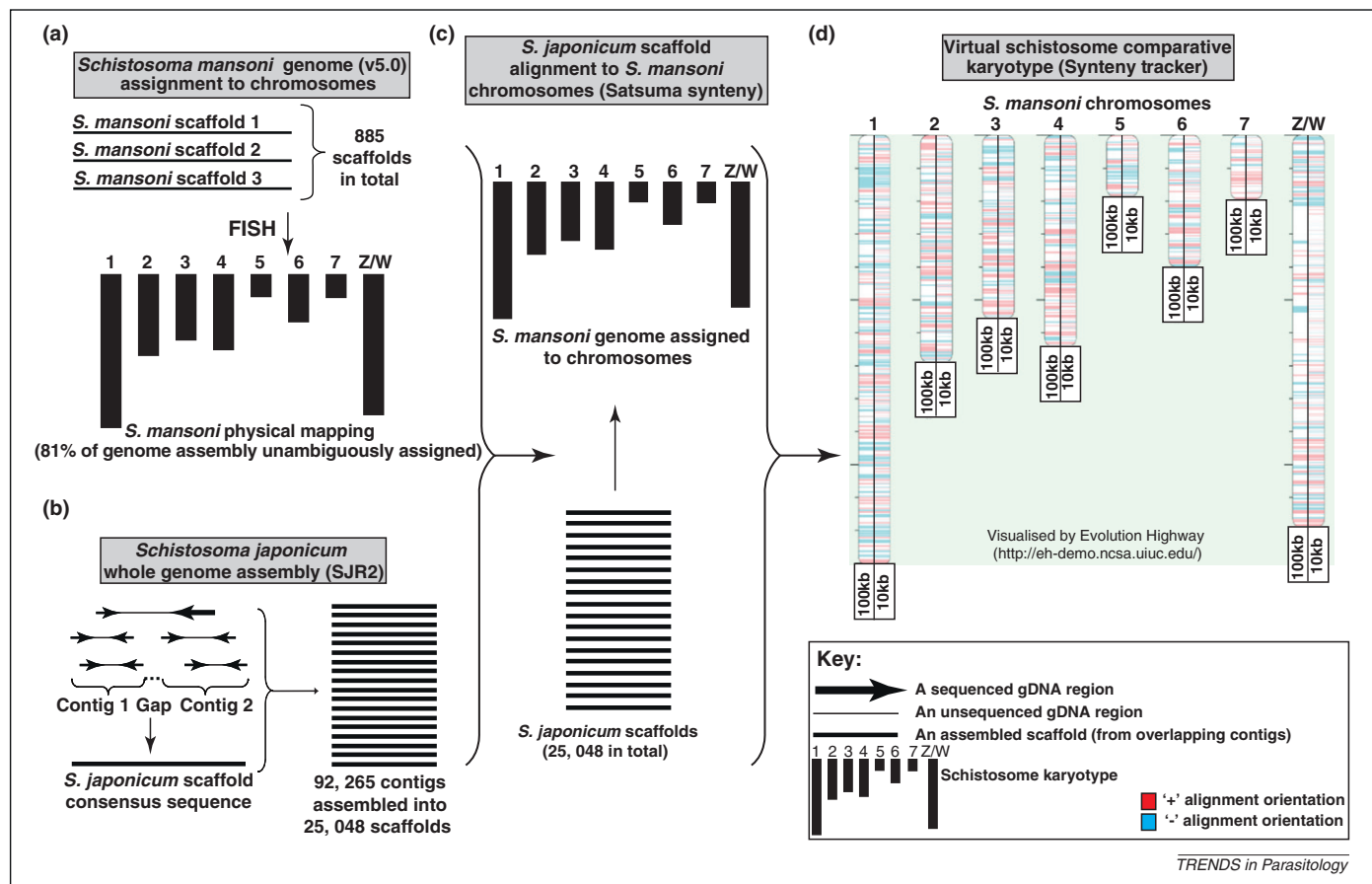
Intragenomics comparative genome analyses involve the exploration of relatedness/differences between species (within a single genus), which in turn could provide physical markers of chromosomal evolution and highlight conserved regions (e.g. protein coding genes or gene families) of possible relevance as anti-schistosomal targets. For the apicomplexans [9] and trypanosomes [10], intragenomics comparative genomics has already facilitated the discovery of novel biological observations (i.e. core genomes and lineage specific expansions) that may lead to innovative anti-protozoan

treatments. To date, similar intragenomics analyses have not been performed for schistosomes.

Here, for the first time, using the most recent *Schistosoma* genome assemblies (SJR2 for *S. japonicum* and SMA5.0 for *S. mansoni*), an intragenomics comparative genomic analysis is performed. Utilising a proven strategy to compare phylogenetically related genomes [11], regions of chromosomal similarity and dissimilarity are identified between basal- (*S. japonicum*) and derived- (*S. mansoni*) schistosome species [12]. Complementing this karyotypic analysis is a review of how improvements in intergenomics comparative and functional genomics can be applied to identify schistosome gene products of potential importance to parasite viability, development and host interrelationships. We suggest that the collective application of these comparative/functional genomics methodologies will lead to a better understanding of schistosome genome structure, gene function and evolution.

### Intragenomics *Schistosoma* comparative genomic analyses

For the 2009 *S. mansoni* genome assembly [2], 43% (distributed over 153 scaffolds) was unambiguously mapped onto schistosome chromosomes (seven autosomes and the Z/W sex-determination pair). Mapping was achieved by fluorescence *in situ* hybridisation (FISH) of bacterial artificial chromosomes (BACs) containing parasite genomic DNA fragments [13]. In 2011, with improvements in genome reassembly and additional FISH experiments, 81% of the *S. mansoni* genome (comprising 885 scaffolds, version 5.0) can now be explicitly mapped to chromosomes (M. Berriman, unpublished) (Figure 1a). This robust physical map allowed us to align the *S. japonicum* whole genome assembly (Figure 1b) to *S. mansoni* chromosomes (Figure 1c) and subsequently generate a comparative genomic map (Figure 1d). Blocks of intragenomics homologous synteny (at 100 kb and 10 kb minimum size resolutions) are illustrated with the corresponding *S. japonicum* protein coding genes contained within these regions described in Supplementary Tables S1 and S2. At 100 kb resolution, the homologous synteny blocks (HSBs) cover approximately a quarter to one-third of the *Schistosoma* genome (101.17 and 112.93 Mb of the *S. japonicum* and *S. mansoni* genomes, respectively) and most probably represent regions of chromosomes derived from a common ancestor [14] (Figure 2), which may be shared in all *Schistosoma* species. In mammalian genomes, HSBs are enriched for genes involved in developmental processes, neurogenesis and cell-to-cell interaction [11]. Accordingly, in schistosomes, these HSBs (containing 4443 genes at 10 kb resolution, Supplementary Table S2) could encode products suitable for the identification of pan-species drug and vaccine targets (further discussed below). Our analysis shows that boundaries of adjacent HSBs found in the same *S. japonicum* scaffold tend to flank putative evolutionary breakpoint regions (EBRs) between *S. mansoni* and *S. japonicum* genomes. These EBRs can be derived either from large-scale interchromosomal (black arrows and numbers, Figure 2) or intrachromosomal (red arrows and numbers, Figure 2) rearrangements and are created from the non-allele joining of broken double-stranded DNA ends during meiosis [15]. In mammalian genomes,



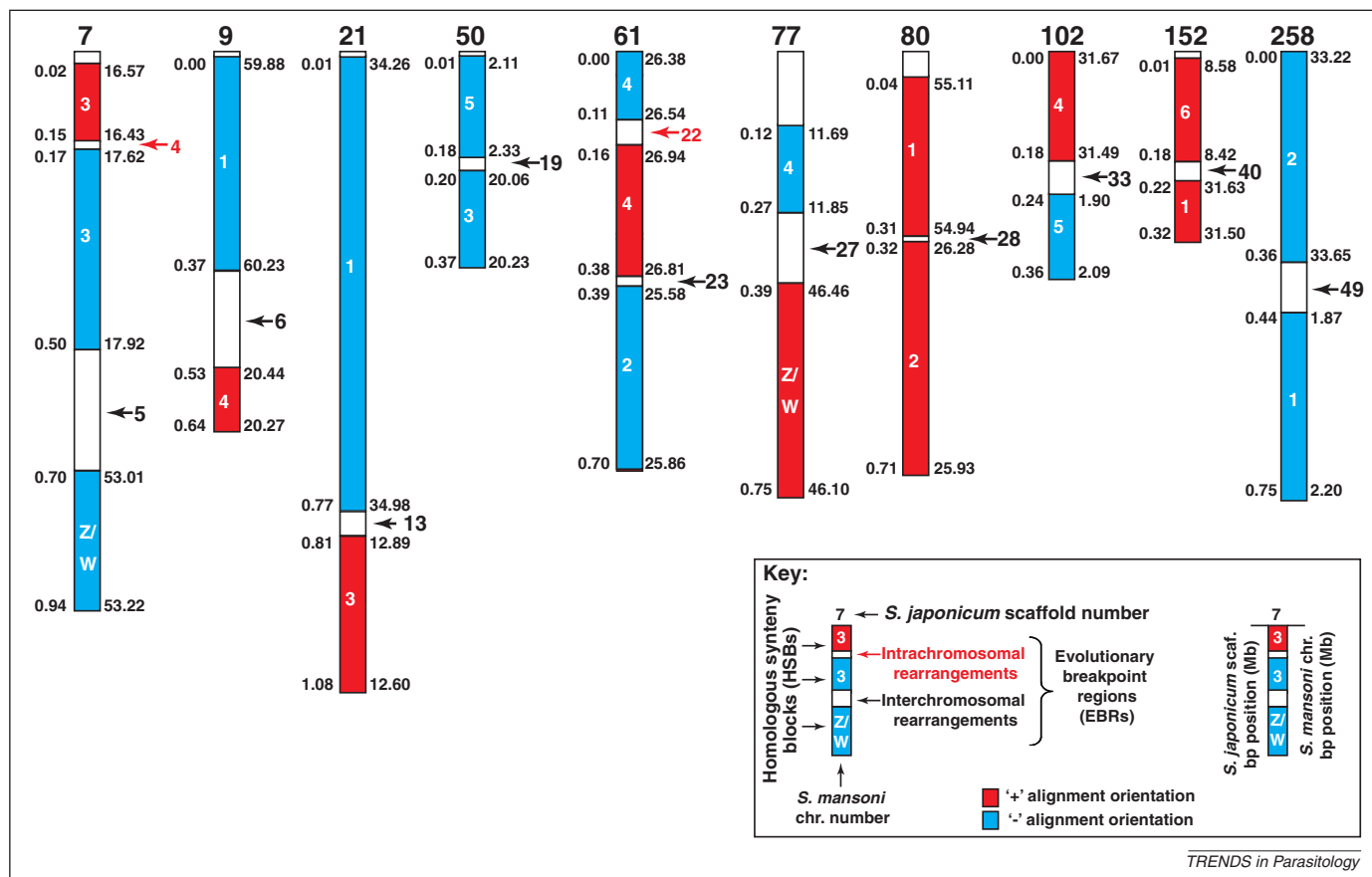
**Figure 1.** Intra-*Schistosoma* comparative genomic analysis: generation of a preliminary virtual karyotype. An intragenus comparative genome analysis was initiated with sequence information contained in the originally published *S. japonicum* genome (<http://www.chgc.sh.cn/japonicum/Resources.html>, SJR2) as well as the recently reassembled *S. mansoni* genome (<http://www.sanger.ac.uk/resources/downloads/helminths/schistosoma-mansoni.html>, SMA5.0). **(a)** Version 5.0 of the *S. mansoni* genome was reassembled into 885 scaffolds, where 81% of them were unambiguously assigned to chromosomal positions (seven autosomes and Z/W sex-determining chimera) by FISH (M. Berriman, unpublished). **(b)** The original *S. japonicum* genome assembly was assembled into 25 048 scaffolds from 92 265 contigs [1]. **(c)** To facilitate intergenus genomic comparisons, *S. japonicum* scaffolds were aligned to *S. mansoni* chromosomes by the Satsuma Synteny program [91] followed by detection of >100 kb (full details found in Supplementary Table S1) and >10 kb (full details found in Supplementary Table S2) homologous synteny blocks (HSBs) defined by the SyntenyTracker program [92]. **(d)** Both 100 kb and 10 kb HSB sets are visualised on the virtual *S. mansoni* comparative chromosomal map (generated by Evolution Highway, <http://eh-demo.ncsa.uiuc.edu/>). We used the 100 kb HSB set for identifying interchromosomal evolutionary breakpoint regions (EBRs) between schistosome genomes (Figure 2), whereas the 10 kb HSB set was used to interrogate gene ontology (GO) enrichment in all putative EBRs found between *S. mansoni* and *S. japonicum* genomes (Figure 3).

EBRs contain gene dense-, transcriptionally active-, poorly methylated- and replication initiation-rich elements [16,17]. These particular features are all associated with chromatin in a relaxed or open state and probably explain why evolutionary breakpoints occur here. As such, EBRs (and the genes contained within them) are subjected to greater genomic instabilities during normal cellular processes and are under increased evolutionary pressure to mutate [18].

Whereas all schistosome chromosomes, except chromosome 7, contain HSBs interrupted by interchromosomal EBRs at 100 kb resolution, closer interrogation of these EBRs (Figure 2, Supplementary Tables S1 and S2) revealed that *Schistosoma* genomes evolve preferentially by intrachromosomal rather than interchromosomal rearrangements (42 intrachromosomal EBRs vs 10 interchromosomal EBRs). This is consistent with nematode genomes [7,19] and illustrates a mechanism of chromosome evolution conserved between worm phyla. Furthermore, a ninefold increase in the total number of all genome rearrangements was found when the 10 kb set (477 EBRs comprising 410 intrachromosomal

rearrangements and 67 interchromosomal rearrangements) was compared to the 100 kb set (52 EBRs). Numerical differences may indicate that: (i) a significant number of rearrangements missing in the 100 kb set are due to the scattered nature of the *S. japonicum* genome, (ii) errors in scaffold-to-chromosome assignments exist in one or both genomes and (iii) true small-scale synteny differences in *S. mansoni* and *S. japonicum* genomes are prevalent. We anticipate that resolution of these possibilities will be facilitated in the near future by advanced, intra-*Schistosoma* comparative genomics.

Although we have yet to fully detail the molecular features (e.g. DNA methylation status [20]) found within these *Schistosoma* EBRs, long terminal repeat (LTR) and non-LTR retrotransposable elements are found in a significantly greater proportion here (Supplementary Table S3). As these elements drive evolutionary processes [21] and have been associated with EBRs of mammalian genomes [22], their enrichment in schistosome EBRs is not surprising. The extent and role of these (functional or recently active) LTR and non-LTR retrotransposons in shaping schistosome evolution has yet to be determined, but is



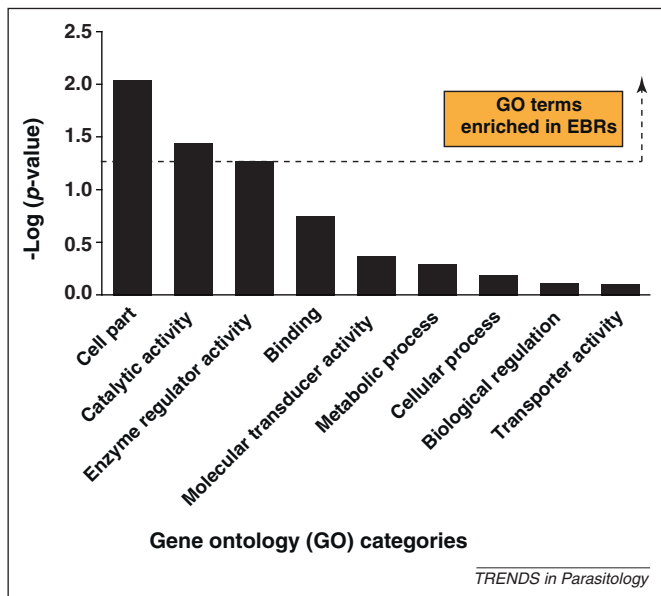
**Figure 2.** *Schistosoma* comparative genome analysis reveals interchromosomal evolutionary breakpoint regions (EBRs). The whole genome alignment output from Satsuma Synteny [91] was translated into homologous syntenic blocks (HSBs, >100 kb) using the SyntenyTracker program [92]. Combined, these HSBs (red blocks, '+' alignment orientation; blue blocks, '-' alignment orientation) cover 112.93 Mb (31%) of the *S. mansoni* genomes and 101.17 Mb (25%) of the *S. japonicum* genomes, respectively. Numbers inside the HSBs indicate *S. mansoni* chromosome designations (version 5.0) and numbers above HSBs correspond to *S. japonicum* scaffold IDs (SJR2). Numbers (indicated as Mb ranges) to the right side of the HSBs are *S. mansoni* chromosomal positions and the numbers to the left side of the HSBs are coordinates derived from *S. japonicum* scaffolds. Black arrows represent positions of all putative interchromosomal rearrangements between the *S. mansoni* and *S. japonicum* genomes with the EBR identifiers (numbered 5, 6, 13, 19, 23, 27, 28, 33, 40 and 49) included in Supplementary Table S1. Red arrows indicate positions of two putative intrachromosomal rearrangements (out of 42 identified in this analysis) between the *S. mansoni* and *S. japonicum* genomes. Details of all intrachromosomal rearrangements can also be found in Supplementary Table S1.

an area of obvious interest. Further gene ontology (GO) analysis (Supplementary Table S2) suggests that, similar to mammalian EBRs, these parasite genomic features are gene-rich and, therefore, probably composed of open chromatin. This conclusion is supported by the finding that 'cell part' and 'catalytic activity' GO categories, belonging to the 'cellular component' and 'molecular function' high level GO terms (populated by gene products involved in transcription and DNA replication/repair), are significantly enriched within the *Schistosoma* EBRs (Figure 3 and Supplementary Table S2). It is tempting to speculate that lineage-specific *S. mansoni* or *S. japonicum* markers are also found within these EBRs and may be mined from within the 140 and 854 gene products identified at 100 kb (Supplementary Table S1) and 10 kb resolution (Supplementary Table S2), respectively.

Although this analysis has detected a core set of HSBs containing ~25% of the ancestral *Schistosoma* genome, we expect that the number of EBRs in the two genomes is underestimated because a comparable physical *S. japonicum* genome map is not yet available. Progress in intra-*Schistosoma* comparative genomics will depend on improving genome assemblies mapped to chromosomes

(e.g. *S. japonicum*) and *de novo* sequencing and draft assemblies of other schistosome genomes (e.g. *S. haematobium*). Indeed, recent intragenus comparative genome analysis of *Caenorhabditis elegans* and *Caenorhabditis briggsae* have improved defective gene models, detected potential new genes and identified missing orthologous relationships within this free-living nematode genus [23]. Further iterations of the present analysis will help identify molecular drivers of schistosome evolution (e.g. functional retrotransposable elements within EBRs) and highlight conserved regions (e.g. protein encoding genes or gene families within HSBs) of interest as pan-specific, anti-schistosomal targets. Comparative genomics between the Platyhelminthes will also be possible in the near future due to the completion or ongoing sequencing of *Schmidtea mediterranea* [24], *Taenia solium* [25], *Echinococcus* sp. and *Hymenolepis microstoma* genomes (sequencing/draft assembly in progress for the last two helminths at the Wellcome Trust Sanger Institute). These efforts will help us to understand the origin and nature of parasitism within the phylum as well as highlight the chromosomal events associated with the evolution and divergence of parasitic trematodes and cestodes from free-living turbellarians.

## Review



**Figure 3.** Schistosome evolutionary breakpoint regions (EBRs) and surrounding intervals (<10 kb) are enriched for specific gene ontology (GO) categories. GO categories (across molecular function, biological process and cellular component terms) were assigned to *S. japonicum* genes using an in-house script that attempted to assign gene products to GO names and synonyms from version 1.2 (release date 15 March, 2011 CVS revision number 1.1836) of the ontology (<http://www.geneontology.org>). The script was able to calculate a score for each GO ID by matching words in the gene product to words in the GO name or synonym. Gene products that scored above a minimum score (or confidence value) were allocated to their highest scoring GO ID. The script then followed the links through the GO hierarchy to identify the corresponding top-level GO categories for each allocated GO ID. These top-level GO categories were subsequently used in the analysis. In the case of a gene product for which no GO name or synonym scored above the confidence value, no GO category was assigned. *S. japonicum* scaffolds were divided into 10 kb windows and the number of genes from each GO category that had >100 assigned genes was counted in each 10 kb window. Next, the average number of genes for each GO category was calculated separately for the windows located within EBRs and the remainder of *S. japonicum* scaffolds. The average number of genes was calculated for 10 kb windows located within the EBRs and compared with the average number of genes in 10 kb windows found outside the EBRs using a *t*-test with unequal variances as described previously [93]. The significance threshold ( $P=0.05$ ) is indicated by a horizontal dashed line. All GO categories above this threshold are more likely to occur in EBRs when compared to the rest of the genome, whereas GO categories below this threshold do not demonstrate any preferential localisation in EBRs compared with other regions of the genome.

### Intergenous comparative genomics to predict *Schistosoma* drug targets

A major goal consequent on the arrival [1,2] and continuing refinement [26] of annotated schistosome genomes is the identification of new drug targets. In this regard, intergenous comparative genomics implements a series of user-defined criteria to derive short lists of prioritised and actionable gene targets [27–30]. Short-listed, high-quality targets are derived from sequence comparisons between schistosome(s) and comparator(s) genomes to identify genes for which experimental data indicate that their products are essential to parasite survival or viability. Actionable entails having the experimental tools at hand to interrogate short-listed targets. So far, target validation in schistosomes has predominantly used transient RNA interference (detailed below) or more recently, employing vector-based small hairpin RNAs (shRNAs) [31,32]. The alternative or complementary approach of chemical validation relies on small molecules most often developed against a distinct (usually human) target with

the implication, and sometimes formal demonstration [33,34], that the anti-schistosomal effect is associated with binding to the intended schistosome orthologue(s). Based on the presented intra-*Schistosoma* comparative genomic analysis, an additional criterion for short-list inclusion and target validation would be chromosomal position. For example, 252 eukaryotic protein kinases (ePKs) have recently been identified in *S. mansoni* and many of these may be potential drug targets [35]. Our analysis (Figures 1 and 2) indicates that some ePKs (e.g. Sjp\_0015710.1, Sjp\_0019720.1, Sjp\_0027360.1, Sjp\_0056860.1) are physically positioned within intra-schistosomal EBRs (Supplementary Table S2). As EBRs are actively evolving, the selection of pan-*Schistosoma* chemotherapeutic targets physically positioned within these regions should proceed cautiously.

Online tools are under development to utilise comparative genomics for short-listing possible drug targets. For example, the TDR Targets Database (<http://tdrtargets.org/>) provides a variety of ‘tunable’ and Boolean-capable filters to generate user-defined lists of potential targets for 11 different pathogens, including *S. mansoni* and several other helminths [29,30]. In addition, SchistoDB (<http://schistodb.net/>) [36] will expand considerably in the next year with improved query functionality, graphical user interfaces and other features from the EuPathDB family of genome databases [37] (G. Oliveira, L. Wei, J. Kissinger and D. Roos, personal communications). Utilising these resources, intergenous comparative genomics can be used to identify pathogen-specific proteins or those that are sufficiently different so as to be functionally absent from the host [38]. This is in an attempt to limit potential drug toxicity arising from chemical crossreactivity between the orthologous parasite and host targets. Yet, the alternative (i.e. to explore orthologous genes as a source of potential drug targets) is also useful. Here, genes that are shared among species are likely to be essential and thus more attractive as targets due to the severity of phenotypes produced upon perturbation [38,39]. Sufficient physiological, parasitological and/or protein structural circumstances often exist that can offset possible host toxicity [28] and, therefore, this concept has been actively exploited in recent comparative genomic studies involving *S. mansoni* [28,29]. This approach might also focus on those genes that are expressed in both juvenile and adult worms [40–42] considering that the current schistosomicide, praziquantel, is less effective against immature parasites [43].

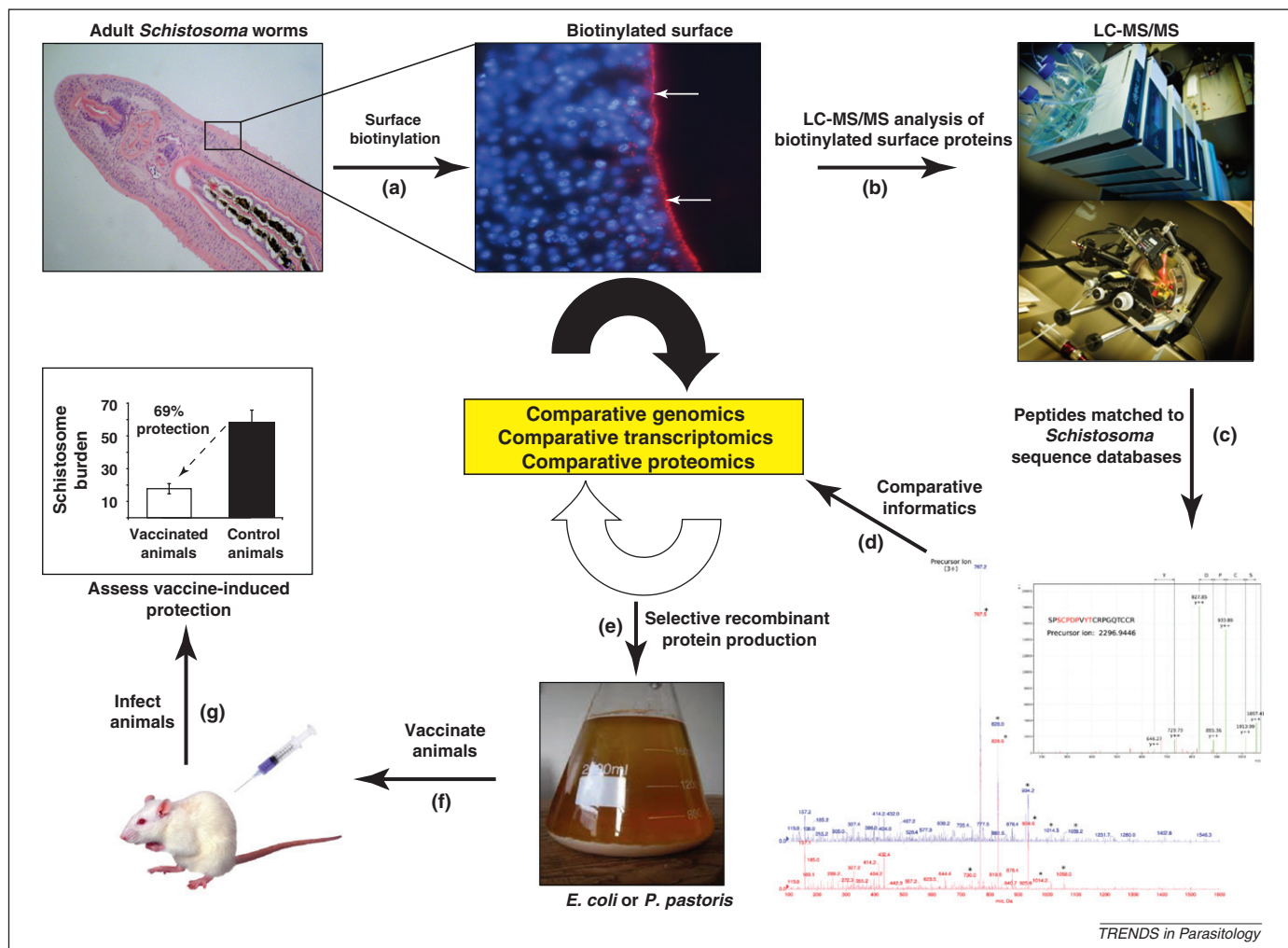
Although comparative genomics offers a straightforward strategy to prevalidate potential drug targets, there are limitations, both inherent and contextual. For the latter, perhaps most obvious is the dearth of comprehensive genome, transcriptome and proteome information for *S. haematobium* which is more prevalent than *S. mansoni* in Africa and is often co-endemic [44]. With the current operational requirement in sub-Saharan Africa for a single anti-schistosomal drug, this lack of annotated sequence information represents a crucial knowledge gap only partially filled by the 0.5 to 1.0x coverage genome sequence that is currently available (<http://www.cebio.org/projetos/schistosoma-haematobium-genome>). Even if highly processed/assembled *S. haematobium* genomic data were at

hand, it might be difficult to predict how even subtle sequence differences between *S. mansoni* and *S. haematobium* targets would impact the successful development of a single drug. Also, as comparative genomics incorporates experimental loss-of-function data from model organisms, the approach may miss potential targets modulated through gain-of-function, as occurs with many of today's anthelmintics [28]. Looking much further forward, comparative genomics and the underlying (but increasingly challenged) drug discovery philosophy of 'one gene, one target, one disease' [45] may oversimplify the process of identifying new drug targets. Rather, a better understanding of the dynamics of how biological pathways and networks are perturbed by small molecules (polypharmacology) and/or gene disruption would provide the sophistication necessary to predict new therapeutic targets [45–47], especially with a view to limiting the establishment of drug resistance. Finally, based on the findings

presented here, selecting compounds that target loci contained within HSBs (Figure 2, Supplementary Tables S1 and S2) presents new opportunities to identify therapeutic small molecules.

### Comparative schistosome vaccinomics/immunomics: identifying immunoprophylactic targets within the tegument

Apart from potential drug targets, the schistosome genome [1,2], various transcriptomes [48,49] and proteomes of the tegument and excretory/secretory (ES) products (reviewed in [50]) have also provided researchers with a 'molecular haystack' in which to find a handful of 'immunoprophylactic needles'. A major challenge is to efficiently and comparatively mine this information. DNA microarrays have partially addressed this issue with several recent reports [40,41] identifying gene products differentially expressed throughout the lifecycle of the parasite, including the





tissue migrating schistosomulum – a major target of protective immune responses [51]. As many of these transcripts (e.g. tetraspanins, cathepsins, serpins and tegumental-associated antigens) are encoded in both *S. mansoni* and *S. japonicum* genomes (i.e. found within HSBs, [Supplementary Table S2](#)) and are also expressed in all definitive host lifecycle stages, they represent key vaccine candidates.

Given the acoelomate body plan of the parasite, schistosome tissues and organs cannot easily be manually dissected to probe for orthologous gene products (identified by comparative genomics) of possible relevance as vaccine antigens. To overcome this challenge, laser microdissection microscopy (LMM) has helped to elucidate gene expression in specific tissues of both *S. mansoni* and *S. japonicum*. Thus far, the gastrodermis and reproductive tissues have been scrutinised using a combination of LMM, RNA extraction and DNA microarray analysis [52,53]. This novel comparative transcriptomics approach aided the assembly of a schistosome gene atlas for the organs under study [53]. Although this methodology offers an unprecedented opportunity to identify tissue-enriched transcriptional profiles (between species), it has its limitations. For example, the schistosome tegument, a tissue often targeted by vaccinologists [54] (being situated at the host–parasite interface [55]) does not readily lend itself to LMM. This is because the tegumental cell bodies (and their nuclei) are buried deeply within the musculature.

Alternative approaches to ‘dissect’ the tegument have utilised comparative proteomics to discover and characterise proteins of interest at this host–parasite interface [50,56–60]. This approach has revealed that several tegumental proteins are homologous between schistosome species [56,59,60] with some being localised to the outer, host-interacting, surface membrane [60,61]. It is these surface-exposed proteins that are attractive vaccine targets ([Figure 4](#)). For example, many tetraspanin genes (contained within the *S. japonicum* and *S. mansoni* HSBs, [Figure 1](#) and [Supplementary Table S2](#)) are highly expressed in the intra-mammalian schistosome stages [40,41], and some of these are located in tegumental membranes [60,61]. The tetraspanins have been experimentally proven to be protective in small and large animal models of schistosomiasis [62,63] and *Sm*-TSP-2 is also selectively recognised by naturally resistant humans [54,62]. Thus, (comparative) proteomics has been a successful platform in the identification and short-listing of candidate protein vaccines.

Integration of ‘omics’ technologies has accelerated the development of new post-genomic tools to aid vaccine discovery. For example, high-throughput protein expression techniques (e.g. *in vitro* transcription/translation systems), coupled to high-throughput immunoscreening with sera from resistant humans and animals, have propelled schistosomiasis research into the immunomics era [64]. Recently, the first *Schistosoma* immunomics protein microarray was described as a vaccine discovery tool [65]. Antigens included on this microarray were chosen from those identified in previous proteomic investigations in addition to those sequences selected from comparative *in silico* screening of both *S. mansoni* and *S. japonicum* genomes

and transcriptomes. The goal here was to identify target antigens based on subcellular location with a particular emphasis on those proteins expressed in the tegument. Proteins were expressed in a cell-free *in vitro* transcription/translation system and contact-printed onto nitrocellulose-coated slides to form protein microarrays. The arrays are currently being probed with IgG and IgE antibody subclasses from resistant and chronically infected human and animal populations (S. Gaze and A. Loukas, unpublished). This approach is revealing antigens that are targets of both protective IgG responses and potentially harmful IgE responses [66]. This innovative technology of immunomics or, essentially, reverse vaccinology that relies on the outputs of comparative genomics, transcriptomics and proteomics analyses has the potential to transform vaccine research for schistosomiasis and other parasitic diseases.

### Functionally exploring comparative genomic outputs: revisiting the tegument

Identifying the precise role(s) of short-listed chemotherapeutic or immunoprophylactic targets is often problematic, especially for those genes without orthology outside of the genus or that encode proteins of unknown function [1,2]. For schistosomes, RNAi has emerged as a useful technique to experimentally manipulate the expression of specific schistosome genes and, possibly, gain insight into gene function. Newer protocols employing shRNAs may further extend its utility [31,32]. Comparative schistosome genomics has revealed that genes encoding known RNAi pathway effectors are shared between *S. mansoni* and *S. japonicum* [67,68]. Furthermore, targeted gene suppression (mediated by RNAi) has been demonstrated in both species [69,70]. Although RNAi can be both rapid and long-lasting [71,72] as well as functional in several schistosome lifecycle stages [71,73], it is not always definitive. For reasons unknown, some genes appear recalcitrant to robust suppression [72,74], and striking phenotypes are seldom seen [72,73]. In other cases, RNAi has helped identify drug targets and gain insight into parasite biochemistry, physiology and host–parasite interactions [34,70,75,76].

Perhaps due to the voluminous genome data, schistosome functional genomics has most often focused on a conserved biochemical pathway, tissue type or employed a gene-by-gene approach. As an example, we review how RNAi has contributed to the functional characterisation of conserved (within the *Schistosoma*) proteins in one such tissue, the aforementioned tegument. Part of its functioning at the host–parasite interface is to import nutrients from the host bloodstream. Within the *S. mansoni* tegument, two facilitated diffusion, glucose-importing proteins have been identified; schistosome glucose transporter (SGTP) 1 and SGTP4 [77]. SGTP4 is present in the host interactive, apical tegumental membranes, whereas SGTP1 is found in the tegumental basal membrane and other tissues. Using schistosomula and adult worms, RNAi of SGTP1 or SGTP4 impaired the ability of the parasite to import glucose, and this effect was compounded by suppression of both transporter genes simultaneously [78]. Although RNAi-treated parasites cultured in rich medium were not phenotypically different from controls as assessed

## Review

microscopically, their survival *in vivo* was significantly impaired [78]. Thus, RNAi has provided direct evidence for the importance of SGTP1 and SGTP4 in glucose transport and survival in the mammalian host.

Proteomic analysis of schistosome tegumental membranes also revealed the presence of an aquaporin homolog (SmAQP) [56]. Aquaporins (found within HSBs, Figure 1 and Supplementary Table S2) are membrane proteins that form pores to selectively conduct water molecules into and out of cells. RNAi-mediated SmAQP suppression impaired the ability of schistosomula to osmoregulate and revealed the previously unrecognised role of the tegument in controlling water movement into, and out of, the parasites [79]. Unexpectedly, SmAQP-suppressed adult parasites *in vitro* failed to rapidly acidify their culture medium and were found to excrete less lactate compared with controls [80]. Heterologous expression of SmAQP in *Xenopus* oocytes demonstrated that this protein, in addition to transporting water, could also transport lactate [80]. These findings provide a molecular understanding of how schistosomes cope with the significant quantities of lactate created from the largely anaerobic glucose catabolism that is a hallmark of their intravascular lives [81]. Collectively, the comparative and functional genomic data suggest that the syntenic position of aquaporins is an important feature of schistosome/host relationships driven by the need to extend tegumental functions in metabolic waste excretion.

The contribution of the tegument to immune evasion by the worms is less well understood, although many

investigations have provided functional explanations in this regard [55]. The presence of nucleotide-metabolizing enzymes associated with the parasite surface [56,57] has led to the suggestion that these can catabolise host proinflammatory metabolites such as ATP and generate anti-inflammatory mediators such as adenosine [82]. Accordingly, schistosomes may prevent their hosts from focusing immunological mediators in their vicinity [82]. In support of this notion, RNAi of adult tegumental alkaline phosphatase (SmAP) prevented production of the anti-inflammatory adenosine from an exogenously added precursor (AMP) [83].

These examples illustrate the power of RNAi to provide insight into schistosome gene function. Combined with schistosome transcriptomics and proteomics, RNAi use can be extended to systematically identify the function of many comparatively identified genome products in parasite biology, development and host interactions.

### Concluding remarks and future perspectives

As outlined, comparative genomics offers an established set of principles for understanding gene and genome biology as well as exploiting that information to identify targets for chemotherapy and immunotherapy. The intragenus and intergenus comparative genomic analyses discussed here are an encouraging first step, but will be improved (Box 1) once other schistosome genomes are sequenced (e.g. *S. haematobium*) and existing schistosome genomes are refined, reassembled and mapped (e.g. *S. japonicum*). When

### Box 1. Outstanding questions: the future of schistosome comparative genomics

#### How important is genome reassembly?

To maximise the power of comparative genomics, *Schistosoma* genomes need to be continually reassembled into the smallest set of overlapping scaffolds as possible. This allows for large stretches of multiple genomes to be systematically compared. Although the *S. mansoni* genome has undergone several rounds of reassembly (genome version 5.0 has 885 scaffolds; <http://www.sanger.ac.uk/resources/downloads/helminths/schistosoma-mansoni.html>), there has been very little progress in reassembling the *S. japonicum* genome since publication (SJR2 has 25 048 scaffolds; <http://www.chgc.sh.cn/japonicum/Resources.html>). Therefore, our preliminary intragenus comparative genome analysis is limited by the fragmented nature of the *S. japonicum* genome. Future analyses will be improved upon refined and reassembled *Schistosoma* genomes facilitated by application of next generation sequencing technologies and sophisticated informatics. Assigning the reassembled *S. japonicum* genome to chromosomes (similar to that performed for *S. mansoni* [13]) would also aid future intragenus analyses.

#### Is the *S. haematobium* genome important for future comparative analyses?

The preliminary *Schistosoma* comparative genomic analysis provided in this review would significantly benefit from the elucidation of the *S. haematobium* genome. A variety of evolutionary and control questions could be more readily addressed upon the inclusion of this most derived (amongst *S. japonicum*, *S. mansoni* and *S. haematobium*) schistosome species. Efforts are currently underway to sequence the genome of this species (e.g. <http://www.cebio.org/projetos/schistosoma-haematobium-genome>). Also, comprehensive genome information for *S. haematobium* would be essential given the operational simplicity demanded for a single drug or vaccine to control both *S. mansoni* and *S. haematobium* in sub-Saharan Africa.

#### How important are additional platyhelminth genomes?

Comparative genomics of only two species in one class within the phylum (illustrated in this review) is obviously providing a very limited snapshot of platyhelminth biology. Therefore, the elucidation of new flatworm genomes is necessary to understand the evolution of this important group of animals. Genomes of *Echinococcus granulosus* (<http://www.sanger.ac.uk/resources/downloads/helminths/echinococcus-granulosus.html>), *Echinococcus multilocularis* (<http://www.sanger.ac.uk/resources/downloads/helminths/echinococcus-multilocularis.html>), *Hymenolepis microstoma* (<http://www.sanger.ac.uk/resources/downloads/helminths/hymenolepis-microstoma.html>), *Schmidtea mediterranea* (<http://smedgd.neuro.utah.edu/>) and *Taenia solium* are all at different states of assembly, but upon completion, will advance our ability to perform comparative flatworm genomics. Information contained within new platyhelminth transcriptomes [84–87] will also complement certain aspects of comparative genome investigations (i.e. identification of conserved drug or vaccine targets).

#### How can post-genomic technologies effectively complement platyhelminth comparative genomics investigations?

A large variety of post-genomics technologies (e.g. [88,89]) have been developed over the past decade to study platyhelminth biology. However, the optimism that these technologies would quickly deliver new platyhelminth drugs or vaccines has yet to be fully realised. Perhaps, in light of the enormous energy put forth in sequencing new platyhelminth genomes, equal emphasis should be dedicated towards the meta-analysis of existing post-genomics datasets to identify those conserved targets suitable for functional validation. Further refinement of post-genomic technologies applied to conserved targets identified by meta-analysis of available datasets and new targets identified by platyhelminth comparative genomics investigations will transform the state of anthelmintic discovery. Indeed, it is this type of approach that is beginning to make an impact on *Plasmodium* biology and the identification of novel antimalarials [90].

additional platyhelminths are included, a robust framework for comparative flatworm genomics will be realised. This information will lead to (i) detection of genes affected by the natural selection processes operating on each platyhelminth species, (ii) identification of the species- and class-specific gene network changes and (iii) characterisation of gene birth/death rates due to lineage-specific genome rearrangements, duplications and mobile genetic element activity. This greater knowledge of genome biology (experimentally verified by post-genomic technologies) will aid the discovery of novel schistosomiasis control strategies and allow for a better understanding of lifestyle diversity and evolution within the Platyhelminthes.

#### Acknowledgments

We thank the many individuals within and outside the global worm community who have supported and encouraged us throughout the years. These interactions have stimulated our inspection of the topics addressed in this review. We also acknowledge the Wellcome Trust, the US National Institutes of Health (AI-056273), the Australian National Health and Medical Research Council and the Sandler Foundation for financially supporting our research activities.

#### Appendix A. Supplementary data

Supplementary data associated with this article can be found, in the online version, at [doi:10.1016/j.pt.2011.09.003](https://doi.org/10.1016/j.pt.2011.09.003).

#### References

- 1 *Schistosoma japonicum* Sequencing Consortium (2009) *The Schistosoma japonicum genome reveals features of host-parasite interplay* *Nature* 460, 345–351
- 2 Berriman, M. *et al.* (2009) The genome of the blood fluke *Schistosoma mansoni*. *Nature* 460, 352–358
- 3 Gryseels, B. *et al.* (2006) Human schistosomiasis. *Lancet* 368, 1106–1118
- 4 King, C.H. (2010) Parasites and poverty: the case of schistosomiasis. *Acta Trop.* 113, 95–104
- 5 Han, Z.G. *et al.* (2009) *Schistosoma* genomics: new perspectives on schistosome biology and host-parasite interaction. *Annu. Rev. Genomics Hum. Genet.* 10, 211–240
- 6 Webster, J.P. *et al.* (2010) Schistosome genomes: a wealth of information. *Trends Parasitol.* 26, 103–106
- 7 Ghedin, E. *et al.* (2007) Draft genome of the filarial nematode parasite *Brugia malayi*. *Science* 317, 1756–1760
- 8 Mitreva, M. *et al.* (2011) The draft genome of the parasitic nematode *Trichinella spiralis*. *Nat. Genet.* 43, 228–235
- 9 Cai, H. *et al.* (2010) Core genome components and lineage specific expansions in malaria parasites *Plasmodium*. *BMC Genomics* 11 (Suppl. 3), S13
- 10 El-Sayed, N.M. *et al.* (2005) Comparative genomics of trypanosomatid parasitic protozoa. *Science* 309, 404–409
- 11 Larkin, D.M. *et al.* (2009) Breakpoint regions and homologous synteny blocks in chromosomes have different evolutionary histories. *Genome Res.* 19, 770–777
- 12 Attwood, S.W. *et al.* (2007) A DNA sequence-based study of the *Schistosoma indicum* (Trematoda: Digenea) group: population phylogeny, taxonomy and historical biogeography. *Parasitology* 134, 2009–2020
- 13 Criscione, C.D. *et al.* (2009) Genomic linkage map of the human blood fluke *Schistosoma mansoni*. *Genome Biol.* 10, R71
- 14 Hardison, R.C. (2003) Comparative genomics. *PLoS Biol.* 1, E58
- 15 Sankoff, D. (2009) The where and wherefore of evolutionary breakpoints. *J. Biol.* 8, 66
- 16 Ma, J. *et al.* (2006) Reconstructing contiguous regions of an ancestral genome. *Genome Res.* 16, 1557–1565
- 17 Lemaitre, C. *et al.* (2009) Analysis of fine-scale mammalian evolutionary breakpoints provides new insight into their relation to genome organisation. *BMC Genomics* 10, 335
- 18 Longhese, M.P. *et al.* (2006) The cellular response to chromosome breakage. *Mol. Microbiol.* 60, 1099–1108
- 19 Stein, L.D. *et al.* (2003) The genome sequence of *Caenorhabditis briggsae*: a platform for comparative genomics. *PLoS Biol.* 1, E45
- 20 Geyer, K.K. *et al.* (2011) Cytosine methylation regulates oviposition in the pathogenic blood fluke *Schistosoma mansoni*. *Nat. Commun.* 2, 424
- 21 Bohne, A. *et al.* (2008) Transposable elements as drivers of genomic and biological diversity in vertebrates. *Chromosome Res.* 16, 203–215
- 22 Elvik, C.G. *et al.* (2009) The genome sequence of taurine cattle: a window to ruminant biology and evolution. *Science* 324, 522–528
- 23 Vergara, I.A. and Chen, N. (2010) Large synteny blocks revealed between *Caenorhabditis elegans* and *Caenorhabditis briggsae* genomes using OrthoCluster. *BMC Genomics* 11, 516
- 24 Robb, S.M. *et al.* (2008) SmedGD: the *Schmidtea mediterranea* genome database. *Nucleic Acids Res.* 36, D599–D606
- 25 Aguilar-Diaz, H. *et al.* (2006) The genome project of *Taenia solium*. *Parasitol. Int.* 55 (Suppl.), S127–S130
- 26 Tsai, I.J. *et al.* (2010) Improving draft assemblies by iterative mapping and assembly of short reads to eliminate gaps. *Genome Biol.* 11, R41
- 27 Frearson, J.A. *et al.* (2007) Target assessment for antiparasitic drug discovery. *Trends Parasitol.* 23, 589–595
- 28 Caffrey, C.R. *et al.* (2009) A comparative chemogenomics strategy to predict potential drug targets in the metazoan pathogen, *Schistosoma mansoni*. *PLoS ONE* 4, e4413
- 29 Crowther, G.J. *et al.* (2010) Identification of attractive drug targets in neglected-disease pathogens using an in silico approach. *PLoS Negl. Trop. Dis.* 4, e804
- 30 Agüero, F. *et al.* (2008) Genomic-scale prioritization of drug targets: the TDR Targets database. *Nat. Rev. Drug Discov.* 7, 900–907
- 31 Zhao, Z.R. *et al.* (2008) *Schistosoma japonicum*: inhibition of Mago nashi gene expression by shRNA-mediated RNA interference. *Exp. Parasitol.* 119, 379–384
- 32 Ayuk, M.A. *et al.* (2011) *Schistosoma mansoni* U6 gene promoter-driven short hairpin RNA induces RNA interference in human fibrosarcoma cells and schistosomules. *Int. J. Parasitol.* 41, 783–789
- 33 Abdulla, M.H. *et al.* (2007) *Schistosomiasis mansoni*: novel chemotherapy using a cysteine protease inhibitor. *PLoS Med.* 4, e14
- 34 Kuntz, A.N. *et al.* (2007) Thioredoxin glutathione reductase from *Schistosoma mansoni*: an essential parasite enzyme and a key drug target. *PLoS Med.* 4, e206
- 35 Andrade, L.F. *et al.* (2011) Eukaryotic protein kinases (ePKs) of the helminth parasite *Schistosoma mansoni*. *BMC Genomics* 12, 215
- 36 Zerlotini, A. *et al.* (2009) SchistoDB: a *Schistosoma mansoni* genome resource. *Nucleic Acids Res.* 37, D579–D582
- 37 Aurrecochea, C. *et al.* (2010) EuPathDB: a portal to eukaryotic pathogen databases. *Nucleic Acids Res.* 38, D415–D419
- 38 McCarter, J.P. (2004) Genomic filtering: an approach to discovering novel antiparasitics. *Trends Parasitol.* 20, 462–468
- 39 Doyle, M.A. *et al.* (2010) Drug target prediction and prioritization: using orthology to predict essentiality in parasite genomes. *BMC Genomics* 11, 222
- 40 Fitzpatrick, J.M. *et al.* (2009) Anti-schistosomal intervention targets identified by lifecycle transcriptomic analyses. *PLoS Negl. Trop. Dis.* 3, e543
- 41 Gobert, G.N. *et al.* (2009) Developmental gene expression profiles of the human pathogen *Schistosoma japonicum*. *BMC Genomics* 10, 128
- 42 Jolly, E.R. *et al.* (2007) Gene expression patterns during adaptation of a helminth parasite to different environmental niches. *Genome Biol.* 8, R65
- 43 Doenhoff, M.J. *et al.* (2009) Praziquantel: its use in control of schistosomiasis in sub-Saharan Africa and current research needs. *Parasitology* 136, 1825–1835
- 44 Rollinson, D. (2009) A wake up call for urinary schistosomiasis: reconciling research effort with public health importance. *Parasitology* 136, 1593–1610
- 45 Hopkins, A.L. (2008) Network pharmacology: the next paradigm in drug discovery. *Nat. Chem. Biol.* 4, 682–690
- 46 Carlson, S.M. and White, F.M. (2011) Using small molecules and chemical genetics to interrogate signaling networks. *ACS Chem. Biol.* 6, 75–85
- 47 Durrant, J.D. *et al.* (2010) A multidimensional strategy to detect polypharmacological targets in the absence of structural and sequence homology. *PLoS Comput. Biol.* 6, e1000648

## Review

- 48 Verjovski-Almeida, S. *et al.* (2003) Transcriptome analysis of the acelomate human parasite *Schistosoma mansoni*. *Nat. Genet.* 35, 148–157
- 49 Liu, F. *et al.* (2006) New perspectives on host-parasite interplay by comparative transcriptomic and proteomic analyses of *Schistosoma japonicum*. *PLoS Pathog.* 2, e29
- 50 DeMarco, R. and Verjovski-Almeida, S. (2009) Schistosomes—proteomics studies for potential novel vaccines and drug targets. *Drug Discov. Today* 14, 472–478
- 51 McManus, D.P. and Loukas, A. (2008) Current status of vaccines for schistosomiasis. *Clin. Microbiol. Rev.* 21, 225–242
- 52 Gobert, G.N. *et al.* (2009) Tissue specific profiling of females of *Schistosoma japonicum* by integrated laser microdissection microscopy and microarray analysis. *PLoS Negl. Trop. Dis.* 3, e469
- 53 Nawaratna, S.S. *et al.* (2011) Gene atlasing of digestive and reproductive tissues in *Schistosoma mansoni*. *PLoS Negl. Trop. Dis.* 5, e1043
- 54 Loukas, A. *et al.* (2007) Schistosome membrane proteins as vaccines. *Int. J. Parasitol.* 37, 257–263
- 55 Skelly, P.J. and Alan Wilson, R. (2006) Making sense of the schistosome surface. *Adv. Parasitol.* 63, 185–284
- 56 Braschi, S. *et al.* (2006) The tegument surface membranes of the human blood parasite *Schistosoma mansoni*: a proteomic analysis after differential extraction. *Proteomics* 6, 1471–1482
- 57 Castro-Borges, W. *et al.* (2011) Enzymatic shaving of the tegument surface of live schistosomes for proteomic analysis: a rational approach to select vaccine candidates. *PLoS Negl. Trop. Dis.* 5, e993
- 58 van Balkom, B.W. *et al.* (2005) Mass spectrometric analysis of the *Schistosoma mansoni* tegumental sub-proteome. *J. Proteome Res.* 4, 958–966
- 59 Perez-Sanchez, R. *et al.* (2006) Proteomic analysis of the tegument and excretory-secretory products of adult *Schistosoma bovis* worms. *Proteomics* 6 (Suppl. 1), S226–S236
- 60 Mulvenna, J. *et al.* (2010) Exposed proteins of the *Schistosoma japonicum* tegument. *Int. J. Parasitol.* 40, 543–554
- 61 Braschi, S. and Wilson, R.A. (2006) Proteins exposed at the adult schistosome surface revealed by biotinylation. *Mol. Cell. Proteomics* 5, 347–356
- 62 Tran, M.H. *et al.* (2006) Tetraspanins on the surface of *Schistosoma mansoni* are protective antigens against schistosomiasis. *Nat. Med.* 12, 835–840
- 63 Da'dara, A.A. *et al.* (2008) DNA-based vaccines protect against zoonotic schistosomiasis in water buffalo. *Vaccine* 26, 3617–3625
- 64 Doolan, D.L. (2011) *Plasmodium* immunomics. *Int. J. Parasitol.* 41, 3–20
- 65 Driguez, P. *et al.* (2010) Schistosomiasis vaccine discovery using immunomics. *Parasites Vectors* 3, 4
- 66 Hotez, P.J. *et al.* (2010) Developing vaccines to combat hookworm infection and intestinal schistosomiasis. *Nat. Rev. Microbiol.* 8, 814–826
- 67 Luo, R. *et al.* (2010) Analysis and characterization of the genes encoding the Dicer and Argonaute proteins of *Schistosoma japonicum*. *Parasites Vectors* 3, 90
- 68 Krautz-Peterson, G. and Skelly, P.J. (2008) *Schistosoma mansoni*: the dicer gene and its expression. *Exp. Parasitol.* 118, 122–128
- 69 Zou, X. *et al.* (2011) RNAi silencing of calcium-regulated heat-stable protein of 24 kDa in *Schistosoma japonicum* affects parasite growth. *Parasitol. Res.* 108, 567–572
- 70 Rinaldi, G. *et al.* (2009) RNA interference targeting leucine aminopeptidase blocks hatching of *Schistosoma mansoni* eggs. *Mol. Biochem. Parasitol.* 167, 118–126
- 71 Krautz-Peterson, G. *et al.* (2007) Optimizing gene suppression in schistosomes using RNA interference. *Mol. Biochem. Parasitol.* 153, 194–202
- 72 Stefanic, S. *et al.* (2010) RNA interference in *Schistosoma mansoni* schistosomula: selectivity, sensitivity and operation for larger-scale screening. *PLoS Negl. Trop. Dis.* 4, e850
- 73 Mourao, M.M. *et al.* (2009) Phenotypic screen of early-developing larvae of the blood fluke, *Schistosoma mansoni*, using RNA interference. *PLoS Negl. Trop. Dis.* 3, e502
- 74 Krautz-Peterson, G. *et al.* (2009) RNA interference in schistosomes: machinery and methodology. *Parasitology* 137, 485–495
- 75 Swierczewski, B.E. and Davies, S.J. (2009) A schistosome cAMP-dependent protein kinase catalytic subunit is essential for parasite viability. *PLoS Negl. Trop. Dis.* 3, e505
- 76 Tran, M.H. *et al.* (2010) Suppression of mRNAs encoding tegument tetraspanins from *Schistosoma mansoni* results in impaired tegument turnover. *PLoS Pathog.* 6, e1000840
- 77 Skelly, P.J. *et al.* (1994) Cloning, characterization, and functional expression of cDNAs encoding glucose transporter proteins from the human parasite *Schistosoma mansoni*. *J. Biol. Chem.* 269, 4247–4253
- 78 Krautz-Peterson, G. *et al.* (2010) Suppressing glucose transporter gene expression in schistosomes impairs parasite feeding and decreases survival in the mammalian host. *PLoS Pathog.* 6, e1000932
- 79 Faghiri, Z. and Skelly, P.J. (2009) The role of tegumental aquaporin from the human parasitic worm, *Schistosoma mansoni*, in osmoregulation and drug uptake. *FASEB J.* 23, 2780–2789
- 80 Faghiri, Z. *et al.* (2010) The tegument of the human parasitic worm *Schistosoma mansoni* as an excretory organ: the surface aquaporin SmaQP is a lactate transporter. *PLoS ONE* 5, e10451
- 81 Tielens, A.G. *et al.* (1989) *Schistosoma mansoni*: rapid turnover of glycogen by adult worms in vivo. *Exp. Parasitol.* 68, 235–237
- 82 Bhardwaj, R. and Skelly, P.J. (2009) Purinergic signaling and immune modulation at the schistosome surface? *Trends Parasitol.* 25, 256–260
- 83 Bhardwaj, R. and Skelly, P.J. (2011) Characterization of schistosome tegumental alkaline phosphatase (SmAP). *PLoS Negl. Trop. Dis.* 5, e1011
- 84 Young, N.D. *et al.* (2009) Elucidating the transcriptome of *Fasciola hepatica* – a key to fundamental and biotechnological discoveries for a neglected parasite. *Biotechnol. Adv.* 28, 222–231
- 85 Young, N.D. *et al.* (2010) Unlocking the transcriptomes of two carcinogenic parasites, *Clonorchis sinensis* and *Opisthorchis viverrini*. *PLoS Negl. Trop. Dis.* 4, e719
- 86 Young, N.D. *et al.* (2011) A portrait of the transcriptome of the neglected trematode, *Fasciola gigantica* – biological and biotechnological implications. *PLoS Negl. Trop. Dis.* 5, e1004
- 87 Adamidi, C. *et al.* (2011) *De novo* assembly and validation of planaria transcriptome by massive parallel sequencing and shotgun proteomics. *Genome Res.* 21, 1193–1200
- 88 Tchoubrieva, E. and Kalinna, B. (2010) Advances in mRNA silencing and transgene expression: a gateway to functional genomics in schistosomes. *Biotechnol. Genet. Eng. Rev.* 26, 261–280
- 89 Hokke, C.H. *et al.* (2007) Integrating transcriptome, proteome and glycome analyses of *Schistosoma* biology. *Trends Parasitol.* 23, 165–174
- 90 Kooij, T.W. *et al.* (2006) *Plasmodium* post-genomics: better the bug you know? *Nat. Rev. Microbiol.* 4, 344–357
- 91 Grabherr, M.G. *et al.* (2010) Genome-wide synteny through highly sensitive sequence alignment: Satsuma. *Bioinformatics* 26, 1145–1151
- 92 Donthu, R. *et al.* (2009) SyntenyTracker: a tool for defining homologous synteny blocks using radiation hybrid maps and whole-genome sequence. *BMC Res. Notes* 2, 148
- 93 Skovlund, E. and Fenstad, G.U. (2001) Should we always choose a nonparametric test when comparing two apparently nonnormal distributions? *J. Clin. Epidemiol.* 54, 86–92