

4-1979

Agricultural Experiment Station News April 1979

Follow this and additional works at: <http://digitalcommons.unl.edu/ardnews>



Part of the [Agriculture Commons](#)

"Agricultural Experiment Station News April 1979" (1979). *Agricultural Research Division News & Annual Reports*. 190.
<http://digitalcommons.unl.edu/ardnews/190>

This Article is brought to you for free and open access by the Agricultural Research Division of IANR at DigitalCommons@University of Nebraska - Lincoln. It has been accepted for inclusion in Agricultural Research Division News & Annual Reports by an authorized administrator of DigitalCommons@University of Nebraska - Lincoln.



THE AGRICULTURAL EXPERIMENT STATION
INSTITUTE OF AGRICULTURE
AND NATURAL RESOURCES
UNIVERSITY OF NEBRASKA-LINCOLN
H. W. OTTOSON, DIRECTOR

Agricultural Experiment Station



Vol. 12, No. 10, April 1979

FROM THE DIRECTOR'S DESK

The Station and Collaborative Research Support Programs (CRSPs). CRSPs, developed by collaborating Experiment Stations under the guidelines of the Title XII program, represent a new and important research dimension. They are not intended as foreign aid, although they are justified in part by the prospect they offer for contributing to the development of agricultural technology in developing nations. They are not intended as a means by which domestic agricultural experiment stations can "build larger empires". Rather, they are intended as partnerships by the domestic experiment stations and research programs in developing nations, in cooperation with international centers, entered into for mutual advantage through joint programs, exchange of information, and an exchange of materials. We would view them as opportunities for enriching programs in which we already have recognized competence and quality, rather than as a means of developing activity in new research areas.

District Staff Members and Academic Departments. In Nebraska we have long emphasized the role of district staff members as members of academic departments; departments have special responsibility with respect to promotions, tenure, scholarly review of manuscripts, and program planning and coordination. However, we have not emphasized as we might have the notion of the district staff member as a representative of his "home" department. As such he can provide a valuable input into departmental program planning; he can interpret departmental programs and activities to district colleagues and clientele. He can serve as a technical communications link between the department and district station. If he is to effectively represent the interests of his department in these ways the district staff member needs to be fully informed about the programs of his department, changes in research direction, important findings, and other important information. He needs to participate fully in all departmental activities.

Titles of Station staff jointly appointed with Extension. During the past few months we have noted the title "Extension Specialist" or "District Extension Specialist" used by jointly appointed staff members on: a) correspondence on Station business; b) research grant applications; c) research project outlines; d) travel requests on Station accounts; 3) expense vouchers on Station accounts; and f) research manuscripts! we recognize, of course, the use of Extension titles for Extension business; however, they are not appropriate for Station business. The academic title, such as "Professor of Entomology" is appropriate.

Howard W. Ottoson

PERSONNEL ACTIONS

Leymaster, Kreg A. - Asst. Prof. - Ani. Sci. - Courtesy appointment
Rosenberg, Norman J. - Director, Ctr for Ag Meteorology & Climatology - change of title

GRANTS AND CONTRACTS

Arnold, Roy G. - Food Sci. & Tech. - General Mills Foundation	1,000
Campbell, J. B. - Entomology (NP Sta.) - USDA/AR	77,000
Compton, W. A. - Agronomy - J. C. Robinson Seed Co.	500
Daigger, Louis A. - Agronomy (PH Sta.) - Phillips Chemical Co.	1,000
Dickerson, Gordon - Ani. Sci. - Anonymous Donor via Univ. Foundation	3,000
Frank, Kenneth - Agronomy (SC Sta.) - Dow Chemical Co.	2,000
Gast, Robert - Agronomy - Garst and Thomas Hybrid Corn Co.	2,750
Gold, Roger - Environmental Programs - USDA/CR	15,000
Handel, A. Philip - FS&T - American Soybean Assn Research Foundation	14,907
Hergert, Gary - Agronomy (NP Sta.) - National Fertilizer Solutions Assn	2,000
Hergert, Gary - Agronomy (NP Sta.) - Phillips Petroleum	1,000
Hergert, Gary - Agronomy (NP Sta.) - Dow Chemical Co.	2,500
Kies, C. - Human Nutrition & Food Service Mgt. - Ross Laboratories	31,000
Klopfenstein, Terry - Ani. Sci. - Eli Lilly and Co.	14,000
Krause, Vernon - Ani. Sci. (NE Sta.) - Eli Lilly and Co.	7,200
Leavitt, Robert - Agronomy - Ciba-Geigy Corp.	10,000
Lane, L; Wysong, D.-P.Path.- & Doupnik, B.-P.P.(SE Sta.)-Funk Seed Intern'l	1,000
Olson, R. A. - Agronomy - Phillips Chemical Co.	1,000
Omtvedt, Irvin - Ani. Sci. - Mid-America Dairymen, Inc.	1,986
Omtvedt, Irvin - Ani. Sci. - USDA/AR	35,000
Ottoson, Howard - NE Ag Exp Sta. - USDA/CR Animal Health & Disease Research	147,648
Rehm, George - Agronomy (NE Sta.) - National Fertilizer Solutions Assn	2,000
Rehm, George - Agronomy (NE Sta.) - The Potash-Phosphate Institute	1,000
Sander, D. H. and Peterson, G. A. - Agronomy - Phillips Petroleum Co.	3,000
Shahani, Khem M. - FS&T - Great Lakes Biochemicals, Inc.	3,000
Shahani, Khem M. - FS&T - J. Gordon Roberts Investments, Ltd.	5,100
Stetson, LaVerne - Ag Eng. - NE Inter-Industry Electric Council	2,000
Torres-Medina, Alfonso - Vet. Sci. - Abbott Laboratories	1,245

GENERAL NOTES

1. Please be reminded again that the new (December 1978) indirect cost rate for grants and contracts to the AES is 58.3% of salaries and wages (not including fringe benefits). Other divisions of the IANR have differing rates.
2. The SOPP forms (2000-2) for grants and contracts must be typed and thermo-copies are not acceptable downtown. The older data and budget forms are still acceptable for industry grants, but SOPP forms must be used for all state and federal agencies.
3. The "Submitting Agency" for grants and contracts to AES units and staff is the Nebraska Agricultural Experiment Station. This should be so indicated for all but it must be for USDA competitive grants and/or special grants.
4. Dr. Clifton Wharton, Chairman of the Title XII Board (BIFAD) and President of the State University System of New York, will be on our campus April 30 as the Beatrice Foods Distinguished Lecturer of the IANR. This special event will be at 2:00 in the Great Plains Room, East Union.
 Dr. Wharton is an economist and educator with very extensive and distinguished background in world population, food and development (11 honorary doctorates). All staff are urged to plan to hear him and are urged to promote student attendance.
5. Project outlines, CRIS forms and reports may be considered troublesome but they are reasonable and logical mechanisms of planning, communication and accountability for state and federal research support of AES staff. This research funding of each AES scientist in salary, support staff and operating budgets is very substantial. AES staff do enjoy this "hard" funding as contrasted to other University colleagues and the paper work related to it is nominal compared to the alternative of full reliance on soft funding. We ask that you keep this in mind in keeping project documentation current and meaningful.
6. "The search for Truth is in one way hard and in another easy. For it is evident that no one can master it fully nor miss it wholly". --Aristotle

Journal Abstracts - Submitted for Publication (contact authors for more information)

- 79-1157. Rotational Grazing and Fertilization of Native Sandhills Range. James T. Nichols and Mick Knott. Journal of Range Management.
- 79-1158. The Response of Yearling Steers to Using Irrigated Pasture as a Complementary Crop with Native Sandhills Range. James T. Nichols and Gary Lesoing. Journal of Range Management.
- 79-1159. Effect of a Microbial Additive on Alfalfa and Corn Silage Value. V. E. Krause and R. A. Britton. Journal of Animal Science.
- 79-1160. Development of a Round *Cucurbita moschata* Winter Squash with Butternut Qualities and Free of the Crookneck Rogue. Dermot P. Coyne. ASHS-Vegetable Improvement Newsletter.
- 79-1161. Development of a New High-quality Decorative *Cucurbita maxima* Hubbard, Marrow, and Cylindrical Fruit Types. Dermot P. Coyne. ASHS-Vegetable Improvement Newsletter.
- 79-1162. Physical and Sensory Characteristics of Bovine Longissimus Steaks from Cattle Fed Three Different Finishing Rations. D. G. Olson, H. D. Loveday, R. W. Mandigo, F. Caporaso, T. J. Klopfenstein and R. A. Britton. Journal of Animal Science.
- 79-1163. Susceptibility of the Ecotypes of European Corn Borer Larvae to Five Insecticides. Frederick S. Koziol, John F. Witkowski and William B. Showers.
- 79-1164. A Comparison of Yield and Yield Components of Twin- and Normal-Seeded S₁ Selections from *Sorghum Bicolor* (L.) Moench. Willa F. Finley. Nebraska Academy of Sciences.
- 79-1165. Sex and Strain Differences in Response to Pantothenic Acid Deficiency of Small Animals as Manifested in Vitamin B₆ Nutritional Status. L. Huang and C. Kies. Nebraska Academy of Sciences.
- 79-1166. Phytate Content of Dietary Fiber Sources and the Utilization of Minerals by Humans. T. Peterson, C. Kies and H. M. Fox. Nebraska Academy of Sciences.
- 79-1167. Dietary Fiber Effects on Zinc and Magnesium Nutritional Status of Adult Women. H. Papakyrikos, C. Kies and H. M. Fox. Nebraska Academy of Sciences.
- 79-1168. Comparative Effects of Cellulose, Hemicellulose and Pectin on Copper Utilization in Humans Fed a Copper Supplemented Diet. A. Plant, C. Kies and H. M. Fox. Nebraska Academy of Sciences.

BULLETINS PRINTED

- NCR 245. Abandoning Rail Lines in the North Central Region.

NEBRASKA AGRICULTURAL EXPERIMENT STATION PUBLICATIONS - March 1979

Journal Articles - Submitted for Publication (contact authors for more information)

5660. Occurrence of Sorghum Downy Mildew on Shattercane and Sorghum in Nebraska. J. E. Partridge and B. D. Doupnik. Plant Disease Reporter.
5661. Relationship Between Early Postpartum Blood Composition and Reproductive Performance in Dairy Cattle. L. L. Larson, H. S. Mabruk and S. R. Lowry. Journal of Dairy Science.
5662. The Nebraska Burn Study: Interior Product Related Burn Incidents. Joan Laughlin. Housing Educators Journal.
5663. The Use of Computer Simulators for Long Range Financial Planning. Michael Turner and Lewis May.
5664. Characteristics of Bone Particles from Various Poultry Meat Products. G. W. Froning. Poultry Science Journal.
5665. Growth and Nutrient Uptake in Grain Sorghum Grown Under Varying Rates of Mulch. Jerry W. Maranville and Ralph B. Clark. Comm. in Soil Science and Plant Analysis.
5666. The Mating Behavior of the Western Corn Rootworm *Diabrotica virgifera* LeConte and the Northern Corn Rootworm *D. longicornis* Say. Albert C. Lew and Harold J. Ball. Annals of the Entomological Society of America.
5667. Application of an Indirect Solid-Phase Microradioimmunoassay in Pseudorabies Serology. W. L. Staudinger, C. L. Kelling and M. B. Rhodes. Proceedings, American Association of Veterinary Laboratory Diagnosticians, Inc.
5668. Comparison of Learned Interests in Eighth Grade Students in Applied Biological and Agribusiness, Based on Social, Economic and Class Rank Factors. Roy D. Dillon. Journal of the American Association of Teacher Educators in Agriculture.
5669. Value of High Fiber Diets for Gravid Swine. D. S. Pollmann, D. M. Danielson and E. R. Peo, Jr. Journal of Animal Science.
5670. Wheat Straw and Sodium Hydroxide Treatment in Beef Cow Rations. C. W. Acock, J. K. Ward, I. Rush and T. J. Klopfenstein. Journal of Animal Science.
5671. *Nosema loxagrotidis* sp. n. (Microsporidia: Nosematidae), A Parasite of the Western Bean Cutworm *Loxagrotis albicosta* (Smith) (Lepidoptera: Noctuidae). T. J. Helms, Paulina Su and J. V. Maddox. Journal of Invertebrate Pathology.
5672. Pinkeye (Infectious Bovine Keratoconjunctivitis) in Beef Cattle. J. K. Ward and M. K. Nielsen. Journal of Animal Science.
5673. Simulated Black Cutworm Damage to Seedling Corn. R. E. Sechriest, W. B. Showers, F. T. Turpin, Z B Mayo and G. Szatmari-Goodman. Journal of Economic Entomology, Section C.
5674. Building Family Strengths in Dual-Career Families. Barbara Chesser.



James Amend, Associate Professor of Veterinary Science and physiologist, joined the staff in August, 1978.



Elbert C. Dickey, Conservation Specialist and Assistant Professor, Agricultural Engineering, joined the staff in August, 1978, coming from the University of Illinois.



Roger K. Johnson joined the Animal Science Department as Associate Professor, swine breeding, in August, 1978. He came from Oklahoma State University.



James Kinder, Assistant Professor, Animal Science and beef physiologist, joined the staff in January, 1979. He came from Ohio State University.



Carol A. Long, Assistant Professor of Food Science and Technology, came from Pennsylvania State University in December, 1978.



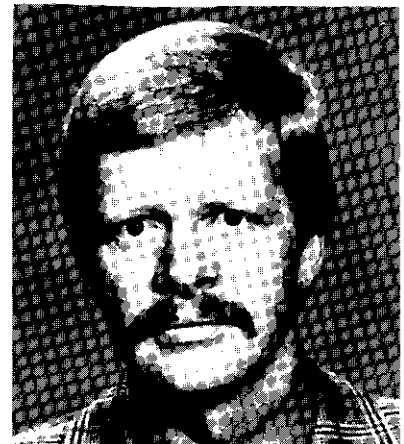
James Partridge, Assistant Professor of Plant Pathology and corn and stalk rot microbiologist, came from the Univ. of California, Riverside, in January, 1978.



Allen Rider, Associate Professor of Agricultural Engineering, came from Oklahoma State University in September, 1978. He is a power and machinery specialist.



Terrance Riordan, Associate Professor of Horticulture, joined the Department in August, 1978.



John Rupnow, Assistant Professor, joined the Food Science and Technology Department in January, 1979.