

January 1999

## Test 1895: Case IH CX 70/C 70 Diesel

Follow this and additional works at: <http://digitalcommons.unl.edu/tractormuseumlit>



Part of the [Applied Mechanics Commons](#)

---

"Test 1895: Case IH CX 70/C 70 Diesel" (1999). *Nebraska Tractor Tests*. 192.  
<http://digitalcommons.unl.edu/tractormuseumlit/192>

This Article is brought to you for free and open access by the Tractor Test and Power Museum, The Lester F. Larsen at DigitalCommons@University of Nebraska - Lincoln. It has been accepted for inclusion in Nebraska Tractor Tests by an authorized administrator of DigitalCommons@University of Nebraska - Lincoln.

# SUMMARY OF OECD TEST 1895—NEBRASKA SUMMARY 326

## CASE IH CX 70 DIESEL

## ALSO CASE IH C 70 DIESEL

### 16 SPEED

#### POWER TAKE-OFF PERFORMANCE

Power HP (kW)	Crank shaft speed rpm	Gal/hr (l/h)	lb/hp.hr (kg/kW.h)	Hp.hr/gal (kW.h/l)	Mean Atmospheric Conditions
<b>MAXIMUM POWER AND FUEL CONSUMPTION</b>					
<b>Rated Engine Speed (PTO speed-1100 rpm)</b>					
59.7 (44.5)	2200	3.94 (14.91)	0.464 (0.282)	15.17 (2.99)	
<b>Standard Power Take-off Speed (1000 rpm)</b>					
62.1 (46.3)	2000	3.88 (14.69)	0.440 (0.267)	16.00 (3.15)	
<b>VARYING POWER AND FUEL CONSUMPTION</b>					
59.7 (44.5)	2200	3.94 (14.91)	0.464 (0.282)	15.17 (2.99)	Air temperature
52.4 (39.1)	2274	3.69 (13.97)	0.495 (0.301)	14.21 (2.80)	68°F (20°C)
39.9 (29.8)	2312	3.14 (11.90)	0.554 (0.337)	12.69 (2.50)	Relative humidity
26.9 (20.0)	2328	2.66 (10.08)	0.696 (0.424)	10.10 (1.99)	33%
13.4 (10.0)	2340	1.95 (7.37)	1.019 (0.620)	6.90 (1.36)	Barometer
--	2357	1.29 (4.89)	--	--	29.3" Hg (99.2 kPa)

Maximum Torque - 195 lb.-ft. (265 Nm) at 1200 rpm  
 Maximum Torque Rise - 37.3%  
 Torque rise at 1800 engine rpm - 26%

#### DRAWBAR PERFORMANCE (Unballasted Front Drive Engaged)

#### FUEL CONSUMPTION CHARACTERISTICS

Power Hp (kW)	Drawbar pull lbs (kN)	Speed mph (km/h)	Crank- shaft speed rpm	Slip %	Fuel Consumption lb/hp.hr (kg/kW.h)	Hp.hr/gal (kW.h/l)	Temp. °F (°C) cool- ing med	Air dry bulb	Barom. inch Hg (kPa)
<b>Maximum Power 6th (3LoDD) Gear</b>									
50.2 (37.4)	4670 (20.78)	4.03 (6.48)	2199	3.0	0.559 (0.340)	12.59 (2.48)	167 (75)	46 (8)	29.6 (100.1)
<b>75% of Pull at Maximum Power 6th (3LoDD) Gear</b>									
40.0 (29.8)	3560 (15.84)	4.21 (6.78)	2279	2.2	0.640 (0.389)	10.99 (2.16)	165 (74)	45 (7)	29.6 (100.1)
<b>50% of Pull at Maximum Power 6th (3LoDD) Gear</b>									
26.8 (20.0)	2345 (10.43)	4.29 (6.91)	2301	1.4	0.800 (0.486)	8.80 (1.73)	162 (72)	45 (7)	29.6 (100.1)
<b>75% of Pull at Reduced Engine Speed 7th (1HiTA) Gear</b>									
39.4 (29.4)	3550 (15.78)	4.16 (6.70)	1889	2.0	0.531 (0.323)	13.25 (2.61)	163 (73)	45 (7)	29.6 (100.1)
<b>50% of Pull at Reduced Engine Speed 7th (1HiTA) Gear</b>									
26.8 (20.0)	2375 (10.56)	4.24 (6.83)	1911	1.3	0.624 (0.379)	11.28 (2.22)	162 (72)	45 (7)	29.6 (100.1)

**Location of Test:** DLG Testing Station for Agricultural Machinery Max - Eyth - Weg 1, D-64823 Gros-Umstadt, Germany

**Dates of Test:** October - November, 1998

**Manufacturer:** Case United Kingdom Limited, Doncaster, DN2 4PG, England

**FUEL and OIL:** Fuel No. 2 Diesel **Specific gravity converted to 60°/60° F (15°/15°C)** 0.845 **Fuel weight** 7.03 lbs/gal (0.843 kg/l) **Oil SAE 15W-40 API service classification** CF-4 **Transmission and hydraulic lubricant** Case Hy-Tran Plus fluid **Front axle lubricant** SAE 85W-140 gear oil

**ENGINE:** Make Perkins Diesel **Type** four cylinder vertical **Serial No.** ASU884231D **Crankshaft** lengthwise **Rated engine speed** 2200 **Bore and stroke** 4.055" x 5.00" (103.0 mm x 127.0 mm) **Compression ratio** 18.5 to 1 **Displacement** 258 cu in (4232 ml) **Starting system** 12 volt **Lubrication** pressure **Air cleaner** two paper elements **Oil filter** one full flow cartridge **Oil cooler** engine coolant heat exchanger for crankcase oil, radiator for hydraulic and transmission oil **Fuel filter** one paper element **Muffler** vertical **Cooling medium temperature control** thermostat and variable speed fan

**CHASSIS:** **Type** front wheel assist **Serial No.** JJE 100 2134 **Tread width** rear 55.9" (1420 mm) to 75.7" (1922 mm) front 53.7" (1364 mm) to 76.0" (1930 mm) **Wheel base** 92.8" (2356 mm) **Hydraulic control system** direct engine drive **Transmission** selective gear fixed ratio with partial (2) range operator controlled powershift **Nominal travel speeds mph (km/h)** first 1.32 (2.12) second 1.59 (2.56) third 2.32 (3.73) fourth 2.80 (4.50) fifth 3.44 (5.53) sixth 4.14 (6.67) seventh 4.94 (7.95) eighth 5.39 (8.67) ninth 5.96 (9.59) tenth 6.50 (10.46) eleventh 8.70 (14.00) twelfth 10.49 (16.88) thirteenth 12.89 (20.75) fourteenth 15.55 (25.02) fifteenth 20.21 (32.52) sixteenth 24.37 (39.22) reverse 1.44 (2.31), 2.53 (4.07), 3.75 (6.04), 5.39 (8.67), 5.88 (9.46), 9.49 (15.28), 14.06 (22.63), 22.05 (35.48) **Clutch** multiple dry disc hydraulically operated by foot pedal **Brakes** wet disc hydraulically operated by two foot pedals which can be locked together **Steering** hydrostatic **Power take-off** 540 rpm at 1994 engine rpm and 1000 rpm at 2000 engine rpm **Unladen tractor mass** 8265 lb (3750 kg)

**DRAWBAR PERFORMANCE**  
**(Unballasted Front Drive Engaged)**  
**MAXIMUM POWER IN SELECTED GEARS**

Power Hp (kW)	Drawbar pull lbs (kN)	Speed mph (km/h)	Crank- shaft speed rpm	Slip %	Fuel Consumption lb/hp.hr (kg/kW.h)	Consumption Hp.hr/gal (kW.h/l)	Temp.°F (°C) cool- ing med	Air dry bulb	Barom. inch Hg (kPa)
1st (1LoTA) Gear									
29.8 (22.2)	9485 (42.20)	1.18 (1.89)	2299	15.0	0.771 (0.469)	9.13 (1.80)	162 (72)	46 (8)	29.6 (100.1)
2nd (1LoDD) Gear									
35.8 (26.7)	9385 (41.75)	1.43 (2.30)	2277	13.5	0.706 (0.429)	9.96 (1.96)	164 (73)	45 (7)	29.6 (100.1)
3rd (2LoTA) Gear									
48.4 (36.1)	8525 (37.92)	2.13 (3.43)	2201	8.4	0.577 (0.351)	12.18 (2.40)	167 (75)	46 (8)	29.6 (100.1)
4th (2LoDD) Gear									
51.2 (38.2)	8060 (35.86)	2.38 (3.83)	1994	6.4	0.539 (0.328)	13.05 (2.57)	167 (75)	45 (7)	29.6 (100.1)
5th (3LoTA) Gear									
53.1 (39.6)	6640 (29.54)	3.00 (4.82)	1994	4.2	0.519 (0.316)	13.55 (2.67)	167 (75)	45 (7)	29.6 (100.1)
6th (3LoDD) Gear									
55.1 (41.1)	5640 (25.09)	3.66 (5.90)	2003	3.2	0.500 (0.304)	14.06 (2.77)	167 (75)	45 (7)	29.6 (100.1)
7th (1HiTA) Gear									
52.8 (39.4)	4525 (20.13)	4.38 (7.05)	1997	2.6	0.521 (0.317)	13.50 (2.66)	167 (75)	45 (7)	29.6 (100.1)
8th (4LoTA) Gear									
51.4 (38.3)	4010 (17.83)	4.81 (7.73)	1997	2.1	0.535 (0.326)	13.14 (2.59)	167 (75)	43 (6)	29.6 (100.1)
9th (1HiDD) Gear									
51.5 (38.4)	3620 (16.10)	5.33 (8.58)	2002	1.9	0.534 (0.325)	13.18 (2.60)	167 (75)	45 (7)	29.6 (100.1)

TRACTOR SOUND LEVEL WITH CAB	Front Wheel Drive	
	Engaged dB(A)	Disengaged dB(A)
Maximum Sound Level	78.5	78.0
Bystander		

TRACTOR SOUND LEVEL WITHOUT CAB	Front Wheel Drive	
	Engaged dB(A)	Disengaged dB(A)
At no load in 7th(1HiTA) gear	89.0	89.0
Bystander		

**TIRES AND WEIGHT**

**Rear Tires** No., size, ply & psi (kPa)  
**Front Tires** No., size, ply & psi (kPa)  
**Height of Drawbar**  
**Static Weight with operator** Rear  
Front  
Total

**Tested Without Ballast**

Two 18.4R34;\*\*, 12(80)  
Two 13.6R24;\*\*, 12(80)  
15.7 in (400 mm)  
5025 lb (2280 kg)  
3240 lb (1470 kg)  
8265 lb (3750 kg)

**Note:** The Case IH C 70 Diesel varies from the Case IH CX 70 Diesel by chassis design and transmission options.

**REPAIRS AND ADJUSTMENTS:** No repairs or adjustments

**REMARKS:** All test results were determined from observed data obtained in accordance with official OECD test procedures. This tractor did not meet the manufacturer's claims of Cab sound level of 73.0 dB(A), nor 3 point lift capacity of 3665 lbs, optionally - 5097 lbs. The performance results on this summary were taken from OECD tests conducted under the Code II Test Code procedure.

We, the undersigned, certify that this is a true summary of data from OECD Report No. **1895**, Nebraska Summary 326, November 27, 2000.

Brent T. Sampson  
Test Engineer

L.L. Bashford  
M.F. Kocher  
R.D. Grisso, Jr.  
Board of Tractor Test Engineers

## THREE POINT HITCH PERFORMANCE (OECD Static Test)

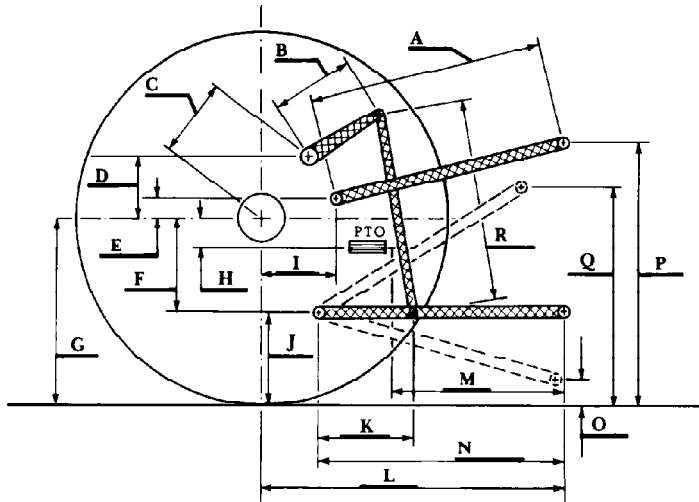
CATEGORY: II

Quick Attach: none

Maximum Force Exerted Through Whole Range: 2610 lbs (11.60 kN)  
 4000 lbs (17.80 kN) (with boost cylinder)

- i) Opening pressure of relief valve: NA
- Sustained pressure of the open relief valve: 2555 psi (176 bar)
- ii) Pump delivery rate at minimum pressure: 16.6 GPM (62.7 l/min)
- iii) Pump delivery rate at maximum
  - hydraulic power: 14.4 GPM (54.5 l/min)
  - Delivery pressure: 2295 psi (158 bar)
  - Power: 19.3 HP (14.4 kW)

### HITCH DIMENSIONS AS TESTED NO LOAD



	inch	mm
A	28.2	716
B	11.7	298
C	11.6	295
D	11.3	288
E	7.9	200
F	6.7	170
G	30.3	770
H	4.8	122
I	11.8	300
J	23.6	600
K	21.7	550
L	38.4	975
M	21.3	540
N	32.0	814
O	7.9	200
P	47.6	1210
Q	33.9	860
R	29.5	750