

University of Nebraska - Lincoln

DigitalCommons@University of Nebraska - Lincoln

Historical Materials from University of Nebraska-
Lincoln Extension

Extension

2003

EC03-1759 Nebraska Register of Champion Trees 2003

Scott J. Josiah

University of Nebraska - Lincoln, sjosiah2@unl.edu

Follow this and additional works at: <http://digitalcommons.unl.edu/extensionhist>



Part of the [Agriculture Commons](#), and the [Curriculum and Instruction Commons](#)

Josiah, Scott J., "EC03-1759 Nebraska Register of Champion Trees 2003" (2003). *Historical Materials from University of Nebraska-Lincoln Extension*. 1897.

<http://digitalcommons.unl.edu/extensionhist/1897>

This Article is brought to you for free and open access by the Extension at DigitalCommons@University of Nebraska - Lincoln. It has been accepted for inclusion in Historical Materials from University of Nebraska-Lincoln Extension by an authorized administrator of DigitalCommons@University of Nebraska - Lincoln.



NATIONAL CHAMPION
Eastern Cottonwood
Daryl Hackbart
Milford, Neb.

Nebraska Register of Champion Trees 2003



Issued in furtherance of Cooperative Extension work, Acts of May 8 and June 30, 1914, in cooperation with the U.S. Department of Agriculture.
Elbert C. Dickey, Dean and Director of Cooperative Extension, University of Nebraska, Institute of Agriculture and Natural Resources.

University of Nebraska Cooperative Extension educational programs abide with the non-discrimination policies of the
University of Nebraska-Lincoln and the United States Department of Agriculture.



The Nebraska Champion Tree Program

Nebraska is famous for its sports champions, but how about Champion Trees? While Nebraska is considered a "prairie state," trees have always played a prominent role in the quality of life of Nebraskans. Native trees were used to build the first pioneer homes. They were also used to heat them and protect them from wind. Trees in our communities and forests provide beauty, protection from wind and blowing snow, useful products, wildlife habitat, cleaner air and water and many other benefits. Clearly, trees contribute to "the good life" in Nebraska. The Nebraska Champion Tree Register helps to remind us of the contribution trees make to the quality of our lives, and to celebrate the beauty, mystery, inspiration and sense of awe that come from being around truly large and ancient trees.

The Nebraska Champion Tree program identifies and recognizes the largest living specimen of all native and the most common introduced tree species in Nebraska. It is administered by the Nebraska Community Forestry Council, UNL Cooperative Extension, and the Nebraska Forest Service. There are over 80 species listed in the Nebraska Champion

Tree Register. These tree aristocrats are natural, historical and cultural landmarks. Spend some time around them - we guarantee you will be impressed.

Nebraska has two National Champion Trees, the eastern cottonwood and the dwarf chinkapin oak. Yet we are convinced more national champions are waiting to be discovered in Nebraska. There are 3 species currently without state champions. You can help to correct this injustice by:

- Being on the lookout for potential champions
- Nominating big trees in your area
- Developing a Champion Tree Program for your community or county

The trees you plant are the "unsung" champions of Nebraska, working hard to improve our lives and our environment.

Scott Josiah,
Extension Forester, UNL
Christine Meyer,
Information & Education Assistant
and Champion Tree Coordinator, UNL

"Champion Trees Don't Live Forever: Plant Tomorrow's Champion Today!"

Nebraska Register of Champion Trees

This register lists the largest trees of over 80 species identified in Nebraska. Most of the species are described in the Nebraska Cooperative Extension publication "Trees of Nebraska" (EC 92-1774). The name of the owner and nominator, size and location of each tree follow each listing.

Many people across Nebraska have worked hard to make this register as comprehensive and accurate as possible,

*but the quest to find the largest trees in Nebraska is never over. Champion trees are by nature old, and old trees diminish and die. Larger trees are newly discovered. Thus, this list continually changes as new nominations are submitted. For the most up-to-date list, please see the Nebraska Champion Tree Web site at **www.nfs.unl.edu***

We look forward to working with you to recognize and celebrate these wonderful trees.

*"Trees are the Earth's endless effort
to speak to the listening heaven."
Rabindranath Tagore*



Northern Catalpa Champion
Phil Pierce
Omaha, Neb.

Nebraska Champion Tree Register

(as of Feb. 1, 2003)

This Nebraska Champion Tree Register lists the most common native and introduced tree species in Nebraska. Most of the listed species are described in **Trees of Nebraska** (Nebraska Cooperative Extension EC 92-1774).

Species	Circumference	Ht.	Crown Spread	Total Points	Nominator	Year Last Measured	Year Nominated	Owner & Tree Location
Arborvitae, American <i>Thuja occidentalis</i>	8' 10"	25'	31'	138	Bob Leuenberger Tecumseh, NE	2002	2002	Nemaha Cemetery Nemaha, NE
Ash, Blue <i>Fraxinus quadrangulata</i>	11' 2"	73'	74'	226	Rod Edwards Nebraska City, NE	2002	2002	Charles Gude 403 S. 9th St. Nebraska City, NE
Ash, Green + <i>Fraxinus pennsylvanica</i>	16' 6"	93'	84'	312	Kay McKivergan Ponca, NE	2000	1986	Kay McKivergan 3 Mi W of Ponca on Hwy. 12 58981 HWY 12
Ash, White + <i>Fraxinus americana</i>	10' 5"	79'	60'	219	Bob Leuenberger Tecumseh, NE	2002	2002	Paul Henrichs 1406 H Street Auburn, NE
Aspen, Quaking + <i>Populus tremuloides</i>	4' 6"	60'	30'	121	Steve Rasmussen Norfolk, NE	2000	2000	Delbert Lieber S. Sioux City, NE, NE/4 of NE/47 Sect 31, T29N R7E
Baldcypress <i>Taxodium distichum</i>	13' 0"	56'	57' 9"	226	Scott Josiah Lincoln, NE	2000	2000	University of Nebraska-Lincoln North end of East Campus Arboretum
Birch, European White <i>Betula pendula</i>	6' 3"	45'	42'	131	Steve Rasmussen Pam Bergstrom Norfolk, NE	2002	2002	John and Beth Ann Feller 409 Lambrecht St. Beemer, NE
Birch, Paper + <i>Betula papyrifera</i>	2' 2"	34'	26'	67	Stan Paczkowski Lincoln, NE	2002	2002	Bryan LGH West 2221 S. 17th St. Lincoln, NE

Birch, River <i>Betula nigra</i>	6' 0"	62'	53'	147	Stan Paczkowski Lincoln, NE	2002	2002	3401 W. Pershing Rd. Frontyard, Lincoln, NE
Boxelder + <i>Acer negundo</i>	12' 11"	57'	48'	224	Jim Mischke Ainsworth, NE	1999	1997	Jerry Johnson 4 N of Long Pine in farmstead
Buckeye, Ohio + <i>Aesculus glabra</i>	8' 9"	58'	62' 6"	179	Lewis Wilson St. Edward, NE	1999	1989	Cedar Rapids Schools 408 W. Dayton, Cedar Rapids, NE
Butternut <i>Juglans cinerea</i>	5' 5"	55'	40'	130	Steve Rasmussen John Filsinger Norfolk, NE	2000	2000	City of Pierce Gilman Park, 300' SE of pool
Catalpa, Northern <i>Catalpa speciosa</i>	20' 0"	65'	60'	320	Phil Pierce Omaha, NE	2000	1995	Lloyd Texley 4508 Burdette St, Omaha
Cherry, Black + <i>Prunus serotina</i>	10' 2"	62'	57'	198	Bob Leuenberger Tecumseh, NE	2002	2001	Jerry Patterson Honey Creek School 1 S and 1 E of Peru
Chestnut, American <i>Castanea dentata</i>	12' 4"	80'	60'	243	Rod Edwards Nebraska City, NE	2000	2000	Nebraska Game & Parks Commission Arbor Lodge State Park, Nebraska City, NE, Chestnut Grove
Chokecherry + <i>Prunus virginiana</i>	2' 9"	34'	24'	73	Steve Rasmussen Wayne, NE	2002	2002	Lauren and Al Walton 1 mi N and 3/4 mi W of Wayne Muhs Acres
Coffeetree, Kentucky ** <i>Gymnocladus dioicus</i>	10' 9"	68'	72.5'	215	Dennis Kuhn Creston, NE	1999	1986	Walter Wahl 9 S, 1 W of Leigh, 10535 355th St.
Coffeetree, Kentucky ** <i>Gymnocladus dioicus</i>	10' 2"	72'	62'	210	Jean Schulz UNL-Lincoln, NE	2002	2001	University of Nebraska-Lincoln Lincoln, NE
Cottonwood, Eastern + <i>Populus deltoides</i>	36' 9"	85'	108'	553	Daryl Hackbart, DC Milford, NE	2001	2001	Daryl Hackbart, DC 2 S and 2 3/4 E of Seward 1/4 W of Matzke Hwy on Fletcher Rd
Cottonwood, Narrowleaf + <i>Populus angustifolia</i>	NO CURRENT CHAMPION							

Species	Circum- ference	Ht.	Crown Spread	Total Points	Nominator	Year Last Measured	Year Nominated	Owner & Tree Location
Crabapple * <i>Malus spp.</i>	8' 11"	40'	52'	160	Gus Shires Lincoln, NE	1999	1984	Tom Combs 13th & N St., Auburn, NE
Crabapple * <i>Malus spp.</i>	7' 7"	575'	55'	162	Steve Rasmussen Gary Zimmer Pierce, NE	2000	2000	Metro Comm. College - Fort, Omaha, West of Bldg. 10, east side of parking lot
Elm, American + <i>Ulmus americana</i>	17' 0"	98'	81.5'	322	Rod Edwards Nebraska City, NE	2000	2000	Paul & Diane Maddux 618 N 6th St., front yard, Nebraska City, NE
Elm, Red/Slippery <i>Ulmus rubra</i>	8' 5"	71'	73'	190.25	Dan Peterson Beatrice, NE	2002	2000	Ken Greenwood 1323 N. 13th St., Beatrice, NE
Elm, Rock + <i>Ulmus thomasii</i>	5' 1"	53'	54'	128	Barbara Peitzmeier Bloomfield, NE	2002	2001	Ponca State Park Ponca, NE
Elm, Siberian <i>Ulmus pumila</i>	16' 9"	89'	74'	313	Stanley & Jean Shavlik Linwood, NE	2000	2000	Stanley & Jean Shavlik 6 W, 3/4 N, & 1/4 W of Morse Bluff
Fir, Concolor <i>Abies concolor</i>	11' 1"	40'	40'	183	Bruce Walker Falls City, NE	1999	1985	Kenneth Rieger 4-1/2 E & 4-3/4 N of Falls City, NE, east side of road
Fir, Douglas <i>Pseudotsuga menziesii</i>	9' 6"	65'	46'	190	Mark Rouw Des Moines, IA	2000	1995	Nebraska Game & Parks Commission Arbor Lodge State Park, Nebraska City, NE
Ginkgo * <i>Ginkgo biloba</i>	12' 4"	52'	63'	215	Raymond Yost Nebraska City, NE	1999	1981	Raymond Yost Nebraska City, NE
Ginkgo * <i>Ginkgo biloba</i>	10' 9"	70'	50'	212	NSA Curators Nebraska Statewide Arboretum	2000	2000	Joslyn Castle Omaha Bldg. Education, 2902 Davenport St., Omaha, NE
Goldenraintree <i>Koelreuteria paniculata</i>	3'	27'	52'	76	Dan Peterson Beatrice, NE	2002	2000	Ralph Fischer 523 N. 4th St., Beatrice, NE

Hackberry ** <i>Celtis occidentalis</i>	14' 10"	85'	90'	286	Stanley Taylor Blair, NE	2001	2001	Stanley Taylor 1852 Grant St., Blair, NE
Hackberry ** <i>Celtis occidentalis</i>	16' 7"	67'	86'	288	Mark Hyberger Beatrice, NE	2000	2000	City of Beatrice, Chautauqua Park Front section along Hwy 77
Hawthorns <i>Crataegus spp.</i>	3' 4"	28'	36'	77	Steve Rasmussen Gary Johnson Wayne, NE	2002	2002	Gary Johnson 2 S and 2 W of Beemer
Hickory, Bitternut + <i>Carya cordiformis</i>	9' 10"	89'	68'	224	Mark Rouw Des Moines, IA	2000	1995	City of Nebraska City Wyuka Cemetery, Nebraska City, NE
Hickory, Shagbark + <i>Carya ovata</i>	7' 5"	86'	42'	186	Dennis Adams Lincoln, NE	1980	1980	Elm Tree Farms, Inc. 3 N of Barada near Indian Cave State Park
Honeylocust + <i>Gleditsia triacanthos</i>	14' 6"	85'	63'	275	Stan Paczkowski Lincoln, NE	2002	2002	Kathleen Foote 3256 Holdrege St., Lincoln, NE
Hophornbeam, Eastern + <i>Ostrya virginiana</i>	4' 0"	41'	36'	98	Pam Peterson Beatrice, NE	2000	2000	Janice Schell 1 S, 3 E of Wymore, NE
Horsechestnut <i>Aesculus hippocastanum</i>	9' 3"	59'	36'	179	Phil Rzewnicki West Point, NE	2000	1987	Ken Hugo 731 N. Main Street, West Point, NE
Juniper, Rocky Mountain +13' 1" <i>Juniperus scopulorum</i>	28'	31.5'		192	Ray & Mathew Boice Gering, NE	2000	1994	Nebraska Game & Parks Commission Buffalo Creek WMA near Minatare, NE
Larch <i>Larix spp.</i>	8' 7"	58'	60'	176	Dave Mooter Omaha, NE	1999	1981	City of Omaha Miller Park, Omaha, NE
Linden, American + <i>Tilia americana</i>	20' 9"	55'	73'	322	Jeff Hayes Ellen Kohtz 6th Grade Class	2001	2001	Boone Central District #1 605 S. 6th Street Albion, NE
Locust, Black <i>Robinia pseudoacacia</i>	12' 2"	64'	42'	221	Bob Leuenberger Tecumseh, NE	2002	2002	Mike Moran 409 California, Peru, NE
Magnolia, Saucer <i>Magnolia x soulangiana</i>	5' 9"	32'	34'	110	Bob Leuenberger Tecumseh, NE	2002	2001	Bob McAdams 1005 5th St., Peru, NE

Species	Circumference	Ht.	Crown Spread	Total Points	Nominator	Year Last Measured	Year Nominated	Owner & Tree Location
Maple, Amur <i>Acer ginnala</i>	3' 4"	15'	26'	62	Gary Zimmer Pierce, NE	2002	2002	City of Pierce Gilman Park Arboretum 200 N. Mill St., Pierce, NE
Maple, Norway <i>Acer platanoides</i>	12' 6"	70'	77'	240	Christine Meyer Lincoln, NE	2002	2002	Marna Porter 1565 South St., Blair, NE
Maple, Red <i>Acer rubrum</i>	8' 8"	75'	60'	194	Rod Edwards Nebraska City, NE	2002	2002	Nebraska Game & Parks Comm., Arbor Lodge State Park Nebraska City, NE
Maple, Rocky Mountain + <i>Acer glabrum</i>	1' 4"	16'	23.5'	38	Doak Nickerson Minatare, NE	1998	1998	Nebraska Board of Educational Lands & Funds 7 N and 13 E of Harrison, NE
Maple, Silver + <i>Acer saccharinum</i>	22' 6"	100'	119'	400	George Pinkerton Beatrice, NE	2002	2000	City of Beatrice, Chautauqua Park, front of section 3, 110 yds N of Grable Street
Maple, Sugar <i>Acer saccharum</i>	12' 1"	56'	77'	220	Bob Leuenberger Tecumseh, NE	2002	2001	James Grant, Jr. 703 14th St., Auburn, NE
Mulberry, Red + or White <i>Morus rubra; M. alba</i>	21' 11"	49'	76'	331	Jon & Ron Koranda Wahoo, NE	2000	1978	Rosemary Koranda Oak Leaf Farm, 2 N & 3 E of Wahoo, NE
Oak, Black + <i>Quercus velutina</i>	16' 9"	82'	72'	301	Bruce Walker Falls City, NE	2000	1980	Rick Kuker 1 1/4 W, 1/2 S of Barada, Lat N. 40 degree, 12.869'; Lon W95, 36.014'
Oak, Bur + <i>Quercus macrocarpa</i>	17' 1"	70'	90'	297	Bob Leuenberger Tecumseh, NE	2002	2002	John Lambert 2 S and 1 E of Nemaha N 40 degree 18.870'
Oak, Chinkapin + <i>Quercus muehlenbergii</i>	13' 1"	70'	67'	244	Rod Edwards Nebraska City, NE	2000	2000	Charles Gude Nebraska City, NE, Rt 2, 75 S to OPPD Rd, 2 E, 1.5 S, east side - 150 yds into woods

Oak, Dwarf Chinkapin + <i>Quercus prinoides</i>	39'	25'	20'	69	Guy Sternberg Justin Evertson Jim Locklear	2001	2001	Bill Stalder 2 S and 1 W of Salem. On Rocky Bluff just S of Rock Creek in NW part of NW 1/4
Oak, English <i>Quercus robur</i>	12' 5"	55'	50'	267	David Burke Omaha, NE	1999	1985	State of Nebraska Joslyn Castle, Omaha, NE
Oak, Northern Red *+ <i>Quercus rubra</i>	15' 6"	80'	87'	288	Stan Paczkowski Lincoln, NE	2002	2002	University of Nebraska-Lincoln NW Corner of 34th and Starr, Lincoln, NE
Oak, Northern Red + <i>Quercus rubra</i>	15' 5"	85'	80'	290	Roger Moellendorf Fremont, NE			Mark & Laurie Ferraina 1445 N. Nye St., Fremont, NE
Oak, Pin <i>Quercus palustris</i>	15' 2"	80'	85'	283	Steve Watson Omaha, NE	2002	2002	5647 Florence Blvd., Front yard Omaha, NE
Oak, Shingle <i>Quercus imbricaria</i>	6' 2"	61'	56'	149	Stan Paczkowski Lincoln, NE	2002	2002	NE Corner of Bessey Hall UNL City Campus, Lincoln, NE
Oak, Swamp White <i>Quercus bicolor</i>	10' 10"	66'	87'	218	Cyril Bish Lincoln, NE	2000	1981	Clay & Betty Whitehead 2500 Woodcrest St., Lincoln, NE
Oak, White + <i>Quercus alba</i>	11' 3"	59'	72'	212	Mark Rouw Des Moines, IA	1999	1995	Irma Meter 1212 Chestnut St., Johnson, NE
Osage Orange <i>Maclura pomifera</i>	16' 9"	49'	74'	268	Rick Hamilton Lincoln, NE	1999	1977	Tom Lutz Minick House, Brownville, NE
Pagoda Tree, Japanese <i>Sophora japonica</i>	9' 10"	79'	39'	207	Julie Hunting & Kitty More Nebraska City, NE	2000	2000	Nebraska Game & Parks Commission Arbor Lodge State, Nebraska City, NE
Pawpaw + <i>Asimina triloba</i>	2' 8"	30'	18'	67	Stan Paczkowski Lincoln, NE	2002	2002	Wilbur "Bud" Dasenbrock 1449 Meadow Dale Dr., Lincoln, NE
Pear, Ornamental <i>Pyrus calleryana</i>	3' 4"	33'	39.5'	83	Bob Leuenberger Tecumseh, NE	2002	2001	1st Presbyterian Church 493 Broadway, Tecumseh, NE
Pecan <i>Carya illinoensis</i>	7' 2"	50'	55'	150	George Pinkerton Beatrice, NE	2000	2000	Mrs. Bill Nies 504 Hoyt St., Beatrice, NE

Species	Circum- ference	Ht.	Crown Spread	Total Points	Nominator	Year Last Measured	Year Nominated	Owner & Tree Location
Persimmon <i>Diospyros virginiana</i>	8' 0"	48'	49'	156	Gerald Hopp & Jerry Bucy Falls City, NE	1999	1987	City of Falls City Pioneer Park, W. 19th & Towle Street, Falls City, NE
Pine, Austrian * <i>Pinus nigra</i>	9' 9"	65'	53'	195	Mark Rouw Des Moines, IA	2000	1995	Floyd & Garnet Kreifels 1616 First Corso, Nebraska City, NE
Pine, Austrian * <i>Pinus nigra</i>	11' 0"	46'	52.5'	191	Bill Bryant Panama, NE	2002	1986	Bill Bryant 705 Locust St., Panama, NE
Pine, Eastern White <i>Pinus strobus</i>	11' 4"	80'	72'	233	Mark Rouw Des Moines, IA	1999	1995	City of Falls City W. 21st St./ NE 8, Steele Cemetery west of Falls City, NE
Pine, Jack <i>Pinus banksiana</i>	5' 6"	46'	28'	119	Steve Rasmussen Norfolk, NE	2000	2000	William Altobbs Ewing, NE, NW/4 Sect 10, Township 27N, Range 9W, Holt County
Pine, Limber + <i>Pinus flexilis</i>	6' 0"	62'	42'	144.5	Justin Evertson Lincoln, NE	2002	2002	City of Kimball S side of City Park, Kimball, NE
Pine, Pinyon <i>Pinus edulis</i>	NO CURRENT CHAMPION							
Pine, Ponderosa + <i>Pinus ponderosa</i>	10' 6"	98'	53'	237	Ed Eitel Crawford, NE	2000	2000	Joe Bertagnolli Native Woodland, 2 N, 7 1/2 E of Harrison, NE
Pine, Scotch <i>Pinus sylvestris</i>	14' 1"	52'	72' 6"	239	Mark Hyberger Beatrice, NE	2000	1988	Roger Weber, backyard 1300 Jefferson Street, Beatrice, NE
Poplar, Balsam <i>Populus balsamifera</i>	NO CURRENT CHAMPION							
Poplar, White (Silver) <i>Populus alba</i>	16' 5"	115'	89'	334	Roger Moellendorf Fremont, NE	2002	1981	Tom Kindler 423 W. 11th St., Fremont, NE
Redbud, Eastern + <i>Cercis canadensis</i>	5' 9"	32'	33'	109	Bob Leuenberger Tecumseh, NE	2002	2001	Dave and Susan Adams 200 California, Peru, NE

Redcedar, Eastern + <i>Juniperus virginiana</i>	9' 1"	71'	34'	189	Bob Leuenberger Tecumseh, NE	2000	1996	Bill Hauptman, Peru, NE, Julian Corner Hwy 75, 1 N to Road "R", 2 E, SW corner of yard
Russian Olive <i>Elaeagnus angustifolia</i>	11'	49'	39'	191	Joe Cervantes Alliance, NE	1999	2000	Greg Williams 1/2 S and 6 1/2 W of Marsland, NE
Spruce, Colorado Blue <i>Picea pungens</i> var. <i>glauca</i>	9' 8"	68'	40'	194	Tony Hudson Chadron, NE	2001	2001	Chadron State College N of Administration Building
Spruce, Norway <i>Picea abies</i>	12' 3"	79'	55'	240	David Feder Plattsmouth, NE	2000	1998	Nebraska Masonic Home 14th St. and Ave C., Plattsmouth, NE
Spruce, White <i>Picea glauca</i>	4' 3"	58'	21'	114	Bob Leuenberger Tecumseh, NE	2002	2001	City of Peru, Neal Park E of sidewalk near entrance
Sweetgum <i>Liquidambar styraciflua</i>	5' 4"	74'	31'	146	Mark Rouw Des Moines, IA	2000	1995	Nebraska Game & Parks Commission Arbor Lodge State Park, Nebraska City, NE
Sycamore, American + <i>Platanus occidentalis</i>	18' 1"	88'	112'	333	Neal Jennings Lincoln, NE	1999	1980	William Furnas 1 W, 1/4 S of Brownville, NE
Tree of Heaven <i>Ailanthus altissima</i>	11' 6"	58'	46'	208	Stan Paczkowski Lincoln, NE	2002	2002	Lienemann Bldg., 1333 Plum St., Lincoln, NE

Champion Gingko
Raymond Yost
Nebraska City, Neb.



“Trees are the most conspicuous members of a forest community, for by their form and their height they provide the overriding influence on all other species which exist beneath.”
Carl Wolfe

Species	Circumference	Ht.	Crown Spread	Total Points	Nominator	Year Last Measured	Year Nominated	Owner & Tree Location
Tuliptree * <i>Liriodendron tulipifera</i>	12' 6"	59'	73'	227	Jeffrey Troupe Oakland, NE	2000	1991	Robert & DiAnne Blake 404 N. Osborn St., Oakland, NE
Tuliptree * <i>Liriodendron tulipifera</i>	10' 6"	84'	54'	223	Christine Meyer Lincoln, NE	2002	2002	Nebraska Game & Parks Commission Arbor Lodge State Park Nebraska City, NE
Walnut, Black + <i>Juglans nigra</i>	19' 1"	74'	76'	322	Richard Brader Glenville, NE	2000	2000	Richard Brader 1/2 W of Snowboat N. side Hwy. 74
Willow, Black + <i>Salix nigra</i>	12' 10"	74'	74'	247	Steve Rasmussen Wayne, NE	2000	1988	Lowell & Barbara Peitzmeier 4 N on 513 Ave. 20 E of O'Neill on Co. Rd. 59, S. side bridge along Verdigre Creek.
Willow, Weeping <i>Salix babylonica</i>	17' 2"	97'	58'	317.5	Steve Rasmussen & Jerry Hardy Wayne, NE	1999	1988	Bill Teffers, San Francisco Golf 1st driveway on the west side of Hwy 183, S. of Niobrara River

*Denotes Co-Champions (total points must be within 2 percent of each other).

+Denotes tree native to Nebraska.

**Kentucky Coffeetree
Champion**

Mr. and Mrs. Walt Wahl
Leigh, Neb.



**American Sycamore
Champion**

William Furnas,
Brownville, Neb.

How Do You Measure a Potential Champ

To evaluate a potential champion tree, measure the tree circumference (distance around the trunk) at 4 1/2 feet above the ground, the vertical height and **average** width of the crown.

Circumference: Measure around the trunk (in inches) at a point 4 1/2 feet above the ground. If the tree is on a slope, measure 4 1/2 feet from the ground midslope. If a large swelling, branch or fork occurs at 4 1/2 feet above the ground, measure the smallest circumference below the obstruction. If the tree forks below 4 1/2 feet, measure the circumference of the largest single stem above the fork.

Height: You can use a yardstick to estimate height. First, measure 100 feet from the tallest part of the tree, preferably on the level. Next, hold the yardstick vertically 25 inches from your eye (about an arm's length). Sight along the zero-inch mark to the base of the tree. Then, read the inch mark that aligns with the tree top. This reading in inches multiplied by four gives you the tree's height in feet. A leaning tree's height is measured vertically from the ground to the top of the tree, not along the leaning trunk. Measure height to the nearest foot.

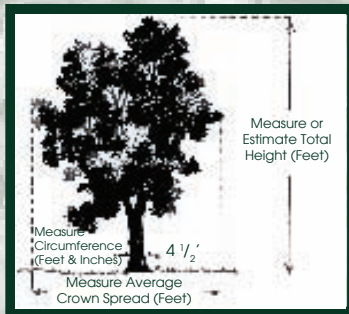
Crown Spread: Crown spread is the average width of widest and narrowest parts of the tree's crown. This measurement should be taken from one edge of the crown, through the tree's trunk to the opposite edge. Determine where the crown's edge is by hanging a weight from a string and sighting up the resulting vertical line. Move back and forth until the string lines up with the crown's edge. Measure the widest spread of the crown and the narrowest, then add them together and divide by 2.

Calculating Total Points: To figure a tree's total point score, assign one point for every inch of stem circumference, one point for each foot of height, and one-fourth point for each foot of average crown spread. The tree with the most points is the champion for that species. If the total points for two or more trees are within 2 percent of each other they will be declared co-champions.

Total points = circumference (inches) + height (feet) + average crown spread (feet)/4

Example: Tree Circumference (220") + Height (80 feet)

$$\begin{aligned} &+ \text{Average Crown Spread } \frac{(120' + 80')}{2} = 100' \\ &= (220 + 80) + \frac{100}{4} = 325 \text{ total points} \end{aligned}$$



To Submit a Nomination

Anyone can nominate a tree at any time for inclusion in Nebraska's Champion Tree Register. If you know of a large tree that you want to nominate for consideration as a Champion tree, please complete the nomination form as follows.

- 1. Record the tree's measurements (directions on page 13).*
- 2. Enclose three or four inches of twig (with leaves or needles if possible) and a photograph to aid in species identification.*
- 3. Send the completed nomination form and sample to:*

*Coordinator, Champion Tree Program
University of Nebraska-Lincoln
107 Plant Industry Building
P.O. Box 830814
Lincoln, NE 68583-0814
For more information call: (402) 472-9869
email: cmeyer3@unl.edu*

- 4. If a tree is close in size to the current champion, a forester or member of the Nebraska Community Forestry Council will visit the tree to confirm the species, and remeasure the tree to determine its official score.*

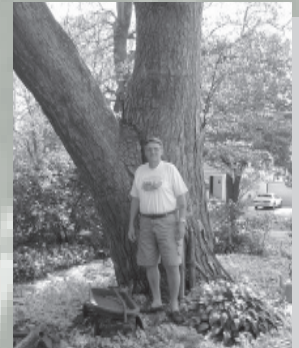
All champions and co-champions will be listed on the Nebraska Forest Service Champion Trees Web site at:

www.nfs.unl.edu

"Generations pass while some trees stand, and yet families last not three oaks."

Robert Browning

Scotch Pine Champion
*Roger Weber
Beatrice, Neb.*



Champion Trees Nomination Form

Tree Species: _____

Date Nominated: _____

Tree owner: Name _____

Address _____

Zip Code _____

Phone _____

Tree

Nominator: Name _____

Address _____

Zip Code _____

Phone _____

Tree Location: _____ miles _____ and _____ miles _____ of
N or S E or W

(nearest town) (county)

(other location data; give as much detail as possible)

Circumference (at 4.5 feet from the ground) _____ feet,
_____ inches.

Total Height: _____ Average Crown Spread: _____
(feet)

Official Measurements:

Circumference: _____ ft _____ in _____
points

Height: _____ ft _____ points

Crown Spread: _____ ft x 1/4 _____ points

Date: _____ Checked By: _____ Total Points: _____

The Nebraska Heritage Trees Program

The Nebraska Register of Heritage Trees provides an opportunity for every community across the state to participate by nominating a distinctive tree for the register. Every community in Nebraska has extraordinary trees that grow at historic places, are at birthplaces of Nebraska's historic figures or places where legendary events occurred. Nominating a tree for the register gives each community an excellent opportunity to celebrate Nebraska heritage.

Trees have continued to serve humankind, supplying a variety of benefits. Some trees have stood watch over lives and events that represent the fabric of our state. Nebraskans are fortunate to have a rich and colorful historic heritage. By viewing the past through the unique perspective of trees, we hope this heritage will endure for future generations. Each community has a tree that is a landmark, a living witness. It is the goal of the Heritage Tree Program to identify and recognize these trees and display their legacy in the Nebraska Register of Heritage Trees.

A tree may be eligible for the Nebraska Register of Heritage Trees if:

- The tree stands at the home of a person who played a role in Nebraska history as a leader, writer or other significant contributor.
- The tree stands at or near where an event occurred that affected Nebraska's development and its citizens.

- The tree was planted by an individual or group whose experience is of significance.
- The tree is illustrated in sketches, journals, photographs or writings, related to a historical event.

The Nebraska Register of Heritage Trees will be unique in that it will be a collection of trees that have served as living witnesses in the state of Nebraska. The register will include tales, photographs and a journey into Nebraska's past through the special accounts of these famous storytellers. All of Nebraska's Heritage Trees will be listed on the Nebraska Forest Service Web site at www.nfs.unl.edu.

Anyone can nominate a tree for inclusion into Nebraska's Heritage Tree Program. If you know of a heritage tree, please contact the coordinator to nominate for consideration as a Heritage Tree. Please include a written nomination and photograph to:

Coordinator, Heritage Tree Program
University of Nebraska-Lincoln
107 Plant Industry Building
P.O. Box 830814
Lincoln, NE 68583-0814



HI Tree
Omaha, Neb.

Heritage Trees Nomination Form

Name of Nominator

Address

Phone Number

Name of Tree Being Nominated (example: Lone Tree)

Describe the Tree

Species: Common Name

Botanical Name

Please explain why this is a heritage tree. If the tree is associated with/as a notable landmark, with a person or institution, or a historic event, please identify in detail.

Heritage Trees Nomination Form

Location of the Tree

Please be precise. Specific directions or address:

Owner

Please note if the tree is on public or private property and give the name and address of the owner:

Newspaper

Please give the name and address of your local newspaper:

Historical Society

Please give the name and address of a local historical society:

Other Questions

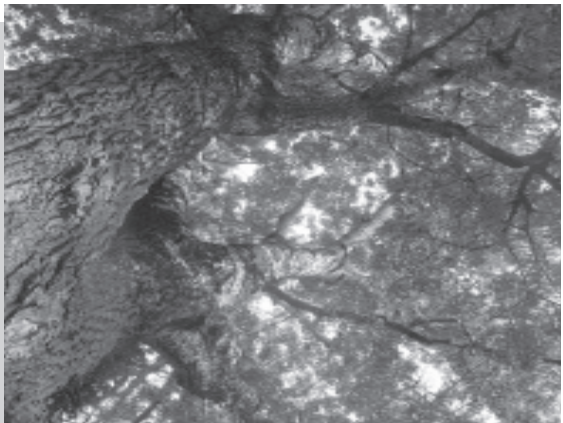
If you are the tree owner, are you willing to collect seeds? Yes No

If No, would you allow a forestry representative to collect seeds? Yes No

Any Additional Information

Please note if there is a reference to the tree in literature or if a professional or historic photograph is available.

Other Nebraska Champion Trees



White Poplar Champion
Tom Kindler
Fremont, Neb.



Blue Spruce Champion
Chadron State College
Chadron, Neb.



White Ash Champion
Paul Heinrichs
Auburn, Neb.



SCHOOL OF NATURAL
RESOURCE SCIENCES

107 Plant Industry Building,
P.O. Box 830814
Lincoln, NE 68583-0814