

University of Nebraska - Lincoln

DigitalCommons@University of Nebraska - Lincoln

Nebraska Tractor Tests

Tractor Test and Power Museum, The Lester F.
Larsen

January 2007

Test 1907: Case-IH Steiger 330 and 335 Diesel Also Case-IH STX 330 Diesel 16-Speed

Tractor Museum

University of Nebraska-Lincoln, TractorMuseumArchives@unl.edu

Follow this and additional works at: <http://digitalcommons.unl.edu/tractormuseumlit>



Part of the [Applied Mechanics Commons](#)

Museum, Tractor, "Test 1907: Case-IH Steiger 330 and 335 Diesel Also Case-IH STX 330 Diesel 16-Speed" (2007). *Nebraska Tractor Tests*. 2084.

<http://digitalcommons.unl.edu/tractormuseumlit/2084>

This Article is brought to you for free and open access by the Tractor Test and Power Museum, The Lester F. Larsen at DigitalCommons@University of Nebraska - Lincoln. It has been accepted for inclusion in Nebraska Tractor Tests by an authorized administrator of DigitalCommons@University of Nebraska - Lincoln.

NEBRASKA OECD TRACTOR TEST 1907 - SUMMARY 575

CASE IH STEIGER 330 DIESEL

ALSO CASE IH STX 330 DIESEL

ALSO CASE IH STEIGER 335 DIESEL

16 SPEED

POWER TAKE-OFF PERFORMANCE

Power HP (kW)	Crank shaft speed rpm	Gal/hr (l/h)	lb/hp.hr (kg/kW.h)	Hp.hr/gal (kW.h/l)	Mean Atmospheric Conditions
MAXIMUM POWER AND FUEL CONSUMPTION					
Rated Engine Speed—(PTO speed—1001 rpm)					
285.76 (213.09)	2000	16.99 (64.30)	0.416 (0.253)	16.82 (3.31)	
Maximum Power (1 Hour)					
323.31 (241.09)	1799	17.98 (68.07)	0.389 (0.237)	17.98 (3.54)	
VARYING POWER AND FUEL CONSUMPTION					
285.76 (213.09)	2000	16.99 (64.30)	0.416 (0.253)	16.82 (3.31)	Air temperature
247.57 (184.61)	2036	15.41 (58.35)	0.436 (0.265)	16.06 (3.16)	78°F (26°C)
188.01 (140.20)	2060	12.90 (48.83)	0.480 (0.292)	14.57 (2.87)	Relative humidity
126.00 (93.96)	2083	10.14 (38.39)	0.563 (0.343)	12.42 (2.45)	53%
63.87 (47.63)	2105	6.91 (26.17)	0.758 (0.461)	9.24 (1.82)	Barometer
1.32 (0.98)	2130	3.87 (14.65)	20.542 (12.495)	0.34 (0.07)	29.04" Hg (98.34 kPa)
Maximum torque - 1077 lb.-ft. (1460 Nm) at 1402 rpm					
Maximum torque rise - 43.5%					
Torque rise at 1603 engine rpm - 33%					
Power increase at 1800 engine rpm - 13%					

DRAWBAR PERFORMANCE

FUEL CONSUMPTION CHARACTERISTICS

Power Hp (kW)	Drawbar pull lbs (kN)	Speed mph (km/h)	Crank- shaft speed rpm	Slip %	Fuel Consumption lb/hp.hr (kg/kW.h)	Hp.hr/gal (kW.h/l)	Temp. °F (°C) cool- ing med	Air dry bulb	Barom. inch Hg (kPa)
Maximum Power—5th Gear									
258.63 (192.86)	20077 (89.30)	4.83 (7.77)	1997	2.3	0.459 (0.279)	15.26 (3.01)	187 (86)	55 (13)	28.52 (96.58)
75% of Pull at Maximum Power—5th Gear									
200.41 (149.44)	15070 (67.03)	4.99 (8.03)	2047	1.6	0.497 (0.302)	14.09 (2.78)	186 (86)	65 (18)	28.54 (96.65)
50% of Pull at Maximum Power—5th Gear									
136.19 (101.56)	10052 (44.71)	5.08 (8.18)	2074	1.1	0.599 (0.364)	11.69 (2.30)	185 (85)	66 (19)	28.54 (96.65)
75% of Pull at Reduced Engine Speed—8th Gear									
200.36 (149.41)	15099 (67.16)	4.98 (8.01)	1544	1.7	0.437 (0.266)	16.03 (3.16)	185 (85)	64 (18)	28.54 (96.65)
50% of Pull at Reduced Engine Speed—8th Gear									
136.12 (101.50)	9993 (44.45)	5.11 (8.22)	1576	1.1	0.501 (0.305)	13.96 (2.75)	183 (84)	67 (19)	28.54 (96.65)

Location of tests: Nebraska Tractor Test Laboratory, University of Nebraska, Lincoln Nebraska 68583-0832

Dates of tests: September 19 - October 22, 2007

Manufacturer: Case Corporation, 700 State Street Racine, Wi. 53404 USA.

FUEL, OIL and TIME: Fuel No. 2 Diesel Specific gravity converted to 60°/60° F (15°/15°C) 0.8407 Fuel weight 7.000 lbs/gal (0.839 kg/l) Oil SAE 15W40 API service classification CI-4 Transmission and hydraulic lubricant Akcela Hy-Tran Ultra fluid Front and rear axle lubricant Akcela Hy-Tran Ultra fluid Total time engine was operated 22.5 hours

ENGINE: Make CNH Engine Corporation Diesel Type six cylinder vertical with turbocharger and air to air aftercooler Serial No. 46734069 Crankshaft lengthwise Rated engine speed 2000 Bore and stroke 4.488" x 5.689" (114.0 mm x 144.5 mm) Compression ratio 16.6 to 1 Displacement 540 cu in (8849 ml) Starting system 12 volt Lubrication pressure Air cleaner two paper elements and aspirator Oil filter one full flow cartridge Oil cooler engine coolant heat exchanger for crankcase oil, radiator for transmission and hydraulic oil Fuel filter one paper element Fuel cooler radiator for returned fuel Muffler vertical Cooling medium temperature control one thermostat and variable speed fan

ENGINE OPERATING PARAMETERS: Fuel rate: 113.6 - 120.6 lb/h (51.6 - 54.7 kg/h) High idle: 2125 - 2165 rpm Turbo boost: nominal 21.8 - 24.7 psi (150 - 170 kPa) as measured 23.1 psi (159 kPa)

CHASSIS: Type four wheel drive with duals Serial No. *Z7F105873* Tread width rear 65.4" (1662 mm) to 116.1" (2950 mm) front 65.4" (1662 mm) to 116.1" (2950 mm) Wheelbase 154.0" (3911 mm) Hydraulic control system direct engine drive Transmission selective gear fixed ratio with full range operator controlled powershift Nominal travel speeds mph (km/h) first 2.50 (4.02) second 3.01 (4.85) third 3.64 (5.85) fourth 4.38 (7.05) fifth 5.03 (8.09) sixth 5.52 (8.89) seventh 6.06 (9.75) eighth 6.66 (10.71) ninth 7.31 (11.77) tenth 8.04 (12.94) eleventh 8.81 (14.18) twelfth 9.69 (15.59) thirteenth 11.12 (17.89) fourteenth 13.38 (21.54) fifteenth 16.17 (26.03) sixteenth 19.47 (31.33) reverse 3.79 (6.10), 8.37 (13.47) Clutch multiple wet disc electro-hydraulically operated by foot pedal Brakes single wet disc hydraulically actuated by foot pedal Steering hydrostatic and articulated Power take-off 1000 rpm at 1998 engine rpm Unladen tractor mass 32120 lb (14569 kg)

**DRAWBAR PERFORMANCE AT 1800 RPM
MAXIMUM POWER IN SELECTED GEARS**

Power Hp (kW)	Drawbar pull lbs (kN)	Speed mph (km/h)	Crank- shaft speed rpm	Slip %	Fuel Consumption lb/hp.hr (kg/kW.h)	Temp. °F(°C) cool- ing med	Air dry bulb	Barom. inch Hg (kPa)	
260.69 (194.40)	31197 (138.77)	3.13 (5.04)	1903	8.0	3rd Gear 0.468 (0.285)	14.94 (2.94)	191 (88)	51 (11)	28.50 (96.51)
281.47 (209.89)	28718 (127.74)	3.68 (5.92)	1800	5.7	4th Gear 0.444 (0.270)	15.77 (3.11)	188 (87)	54 (12)	28.51 (96.55)
288.90 (215.43)	25196 (112.08)	4.30 (6.92)	1799	3.5	5th Gear 0.432 (0.263)	16.20 (3.19)	189 (87)	55 (13)	28.52 (96.58)
294.26 (219.43)	23230 (103.33)	4.75 (7.64)	1797	2.9	6th Gear 0.424 (0.258)	16.49 (3.25)	189 (87)	57 (14)	28.52 (96.58)
289.33 (215.75)	20743 (92.27)	5.23 (8.42)	1797	2.4	7th Gear 0.431 (0.262)	16.26 (3.20)	189 (87)	58 (14)	28.52 (96.58)
290.56 (216.67)	18925 (84.18)	5.76 (9.27)	1796	2.2	8th Gear 0.431 (0.262)	16.24 (3.20)	188 (87)	59 (15)	28.52 (96.58)
286.69 (213.78)	16913 (75.23)	6.36 (10.23)	1798	1.9	9th Gear 0.435 (0.265)	16.07 (3.17)	188 (87)	60 (16)	28.52 (96.58)
287.88 (214.67)	15399 (68.50)	7.01 (11.28)	1801	1.6	10th Gear 0.435 (0.264)	16.11 (3.17)	188 (87)	62 (17)	28.53 (96.61)
280.46 (209.14)	13664 (60.78)	7.70 (12.39)	1800	1.4	11th Gear 0.445 (0.271)	15.74 (3.10)	188 (87)	63 (17)	28.53 (96.61)
284.59 (212.22)	12650 (56.27)	8.44 (13.58)	1794	1.2	12th Gear 0.438 (0.267)	15.97 (3.15)	188 (86)	63 (17)	28.53 (96.61)

REPAIRS AND ADJUSTMENTS: No repairs or adjustments.

REMARKS: All test results were determined from observed data obtained in accordance with official OECD, SAE and Nebraska test procedures. The drawbar pull in 3rd gear was limited to avoid excessive tractor bouncing. For the maximum power tests, the fuel temperature at the injection pump inlet was maintained at 100°F (38°C). The manufacturer's claim of 75 dB(A) cab sound level, with Luxury cab, was not verified. The performance figures on this Summary were taken from a test conducted under the OECD Code II test procedure.

We, the undersigned, certify that this is a true and correct report of official Tractor Test No. **1907**, Nebraska Summary 575, February 6, 2008.

Roger M. Hoy
Director

M.F. Kocher
R.E. Yoder
J.A. Smith
Board of Tractor Test Engineers

TRACTOR SOUND LEVEL WITH DELUXE CAB

dB(A)

At no load in 5th gear	71.4
Bystander in 16th gear	87.2

TIRES AND WEIGHT

Rear tires - No., size, ply & psi (kPa)
Front tires - No., size, ply & psi (kPa)
Height of Drawbar
Static Weight with operator- Rear
- Front
- Total

Tested without ballast

Four 480/80R46;***;9 (60)
Four 480/80R46;***;13 (90)
20.5 in (520 mm)
14110 lb (6400 kg)
18185 lb (8249 kg)
32295 lb (14649 kg)

THREE POINT HITCH PERFORMANCE (OECD Static Test)

CATEGORY: IVN

Quick Attach: yes

Maximum force exerted through whole range:	15678 lbs (69.7 kN)	
	<u>Standard pump</u>	<u>High flow pump</u>
i) Sustained pressure of the open relief valve:	3040 psi (210 bar)	3039 psi (209 bar)
ii) Pump delivery rate at minimum pressure and rated engine speed:	40.6 GPM (153.7 l/min)	56.9 GPM (215.4 l/min)
iii) Pump delivery rate at maximum hydraulic power:	37.7 GPM (142.7 l/min)	54.2 GPM (205.2 l/min)
Delivery pressure:	2805 psi (193 bar)	2656 psi (183 bar)
Power:	61.7 HP (46.0 kW)	84.0 Hp (62.6 kW)

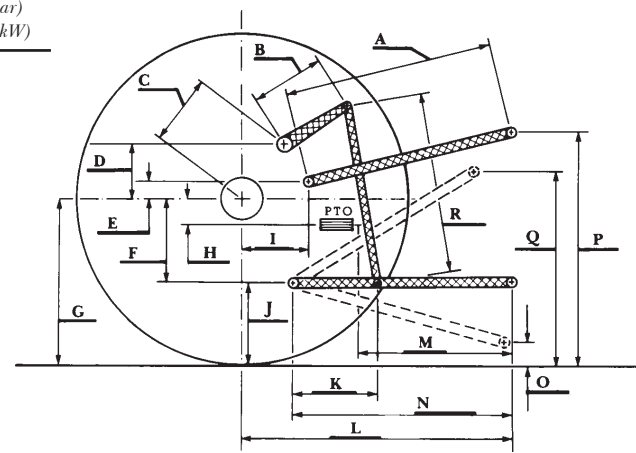
TwinFlow system

	<u>Main pump</u>	<u>TwinFlow pump</u>
i) Sustained pressure at compensator cutoff:	3026 psi (208 bar)	3041 psi (210 bar)
ii) Pump delivery rate at minimum pressure and rated engine speed:	56.6 GPM (214.2 l/min)	37.7 GPM (142.6 l/min)
Combined flow:	94.3 GPM (356.8 l/min)	
iii) Pump delivery rate at maximum hydraulic power:	55.4 GPM (209.5 l/min)	35.9 GPM (135.9 l/min)
Delivery pressure:	2430 psi (167 bar)	2861 psi (197 bar)
Power:	78.5 HP (58.5 kW)	59.9 Hp (44.7 kW)

HITCH DIMENSIONS AS TESTED - NO LOAD

	inch	mm
A	33.7	855
B	29.9	760
C	23.2	590
D	22.0	558
E	13.5	342
F	13.4	340
G	37.2	945
H	2.7	68
I	21.2	538
J	23.8	605
K	29.0	736
L	54.8	1391
*L'	62.0	1575
M	27.0	687
N	39.3	997
O	8.0	203
P	47.6	1209
Q	40.2	1020
R	39.5	1004

*L' to Quick Attach ends



Case IH Steiger 330 Diesel