

University of Nebraska - Lincoln

DigitalCommons@University of Nebraska - Lincoln

Nebraska Tractor Tests

Tractor Test and Power Museum, The Lester F.
Larsen

January 2005

Test 1854: John Deere 4520 Ehydro Diesel Hydrostatic

Tractor Museum

University of Nebraska-Lincoln, TractorMuseumArchives@unl.edu

Follow this and additional works at: <http://digitalcommons.unl.edu/tractormuseumlit>



Part of the [Applied Mechanics Commons](#)

Museum, Tractor, "Test 1854: John Deere 4520 Ehydro Diesel Hydrostatic" (2005). *Nebraska Tractor Tests*. 2111.
<http://digitalcommons.unl.edu/tractormuseumlit/2111>

This Article is brought to you for free and open access by the Tractor Test and Power Museum, The Lester F. Larsen at DigitalCommons@University of Nebraska - Lincoln. It has been accepted for inclusion in Nebraska Tractor Tests by an authorized administrator of DigitalCommons@University of Nebraska - Lincoln.

THREE POINT HITCH PERFORMANCE (OECD Static Test)

CATEGORY: I

Quick Attach: None

Maximum Force Exerted Through Whole Range: 2523 lbs (11.2 kN) (at 24" behind link ends)
2821 lbs (15.3 kN) (at lift link ends)

- i) Opening pressure of relief valve: NA
- Sustained pressure of the open relief valve: 2606 psi (180 bar)
- ii) Pump delivery rate at minimum pressure and rated engine speed: 10.8 GPM (40.9 l/min)
- iii) Pump delivery rate at maximum hydraulic power: 9.3 GPM (35.2 l/min)
- Delivery pressure: 2082 psi (144 bar)
- Power: 11.3 HP (8.4 kW)

THREE POINT HITCH PERFORMANCE

Observed Maximum Pressure psi.(bar) 2516 (173)
Location: hydraulic service port
Hydraulic oil temperature: °F(°C) 158 (70)
Location: hydraulic sump
Category: II
Quick attach: none

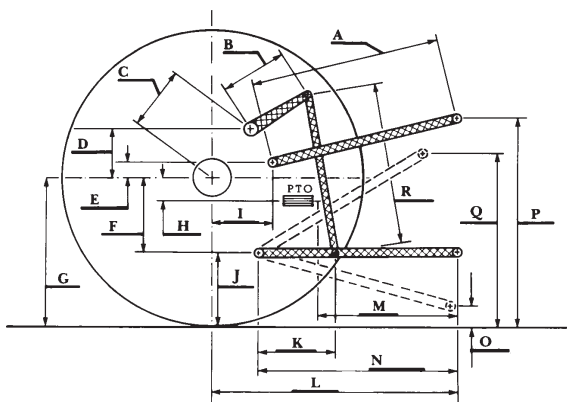
SAE Static Test—System pressure 2165 psi (149 Bar)

Hitch point distance to ground level in. (mm)	8.1 (205)	13.7 (349)	20.0 (509)	26.9 (684)	32.1 (816)
Lift force on frame lb	2961	3050	3021	2833	2581
" " " " " (kN)	(13.2)	(13.6)	(13.4)	(11.6)	(11.5)

OECD/SAE Test

	inch	mm
A	21.9	555
B	11.4	290
C	13.7	347
D	12.7	323
E	11.7	297
F	5.2	131
G	23.1	586
H	0.2	6
I	12.6	320
J	17.9	455
K	15.8	402
L	32.9	836
M	20.1	511
N	27.5	699
O	8.1	207
P	36.0	915
Q	30.5	775
R	19.0	483

HITCH DIMENSIONS AS TESTED - NO LOAD



REPAIRS AND ADJUSTMENTS: No repairs or adjustments.

REMARKS: All test results were determined from observed data obtained in accordance with official OECD, SAE and Nebraska test procedures. This tractor did not meet the manufacturer's claims of 3130 lb (1423 kg) lift capacity at ball ends nor implement pump flow of 12.0 GPM (45.3 l/min). For the maximum power tests, the fuel temperature at the injection pump inlet was maintained at 163°F (73°C).

We, the undersigned, certify that this is a true and correct report of official Tractor Test No. **1854**, October 26, 2005.

Leonard L. Bashford
Director

M.F. Kocher
V.I. Adamchuk
J.A. Smith
Board of Tractor Test Engineers



John Deere 4520 Diesel