

University of Nebraska - Lincoln

DigitalCommons@University of Nebraska - Lincoln

Nebraska Tractor Tests

Tractor Test and Power Museum, The Lester F.
Larsen

January 1999

Nebraska Summary 319: Massey Ferguson 8240 Diesel 18-Speed

Tractor Museum

University of Nebraska-Lincoln, TractorMuseumArchives@unl.edu

Follow this and additional works at: <https://digitalcommons.unl.edu/tractormuseumlit>



Part of the [Applied Mechanics Commons](#)

Museum, Tractor, "Nebraska Summary 319: Massey Ferguson 8240 Diesel 18-Speed" (1999). *Nebraska Tractor Tests*. 2225.

<https://digitalcommons.unl.edu/tractormuseumlit/2225>

This Article is brought to you for free and open access by the Tractor Test and Power Museum, The Lester F. Larsen at DigitalCommons@University of Nebraska - Lincoln. It has been accepted for inclusion in Nebraska Tractor Tests by an authorized administrator of DigitalCommons@University of Nebraska - Lincoln.

SUMMARY OF OECD TESTS 1847 & 1848-NEBRASKA SUMMARY 319

MASSEY FERGUSON 8240 DIESEL

18 SPEED

POWER TAKE-OFF PERFORMANCE

Power HP (kW)	Crank shaft speed rpm	Gal/hr (l/h)	lb/hp.hr (kg/kW.h)	Hp.hr/gal (kW.h/l)	Mean Atmospheric Conditions
MAXIMUM POWER AND FUEL CONSUMPTION					
Rated Engine Speed (PTO speed 1050 rpm)					
146.2 (109.0)	2196	9.26 (35.07)	0.450 (0.274)	15.79 (3.11)	
Standard Power Take-off Speed (999 rpm)					
152.6 (113.7)	2090	9.20 (34.81)	0.428 (0.260)	16.59 (3.27)	
Maximum Power (2 Hours)					
155.2 (115.7)	2004	9.06 (34.28)	0.415 (0.252)	17.13 (3.37)	

VARYING POWER AND FUEL CONSUMPTION					
146.2 (109.0)	2196	9.26 (35.07)	0.450 (0.274)	15.79 (3.11)	Air temperature
125.8 (93.8)	2249	8.44 (31.96)	0.477 (0.290)	14.90 (2.93)	72°F (22°C)
95.9 (71.5)	2285	7.15 (27.07)	0.529 (0.322)	13.41 (2.64)	Relative humidity
65.0 (48.5)	2317	5.68 (21.51)	0.621 (0.378)	11.44 (2.25)	60%
32.3 (24.1)	2342	4.27 (16.15)	0.938 (0.571)	7.57 (1.49)	Barometer
--	2360	2.80 (10.59)	--	--	30.4" Hg (102.9 kPa)

Maximum Torque - 493.6 lb.-ft. (669.2 Nm) at 1400 rpm
 Maximum Torque Rise - 40.4%
 Torque rise at 1780 engine rpm - 27%

DRAWBAR PERFORMANCE

(Unballasted - Front Drive Engaged)

FUEL CONSUMPTION CHARACTERISTICS

Power Hp (kW)	Drawbar pull lbs (kN)	Speed mph (km/h)	Crank- shaft speed rpm	Slip %	Fuel Consumption lb/hp.hr (kg/kW.h)	Hp.hr/gal (kW.h/l) med	Temp. °F (°C) cool- ing bulb		Barom. inch Hg
Maximum Power 10th Gear									
141.1 (105.2)	9730 (43.3)	5.44 (8.75)	1979	5	0.451 (0.275)	15.74 (3.10)	189 (87)	72 (22)	29.8 (100.9)
75% of Pull at Maximum Power 10th Gear									
107.3 (80.0)	6345 (28.2)	6.34 (10.20)	2261	3	0.534 (0.325)	13.30 (2.62)	187 (86)	72 (22)	29.8 (100.9)
50% of Pull at Maximum Power 10th Gear									
73.1 (54.5)	4205 (18.7)	6.52 (10.49)	2300	2	0.640 (0.389)	11.09 (2.18)	181 (83)	72 (22)	29.8 (100.9)
75% of Pull at Reduced Engine Speed 11th Gear									
107.7 (80.3)	6360 (28.3)	6.35 (10.22)	2001	3	0.487 (0.296)	14.58 (2.87)	183 (84)	72 (22)	29.8 (100.9)
50% of Pull at Reduced Engine Speed 11th Gear									
69.3 (51.7)	3985 (17.7)	6.52 (10.50)	2056	3	0.573 (0.349)	12.39 (2.44)	181 (83)	72 (22)	29.8 (100.9)

Location of Test: Groupement d'Antony, Parc de Touvoie, BP 44 Antony, France 92163

Dates of Test: February - June, 1999

Manufacturer: AGCO S.A. Z.A.-No.2 BP 60307, Avenue Blaise Pascal, 60026 Beauvais, France

FUEL and OIL: Fuel No. 2 Diesel **Specific gravity converted to 60°/60° F (15°/15°C)** 0.853
Fuel weight 7.10 lbs/gal (0.851 kg/l) **Oil SAE** 10W40 **API service classification** CD/CE
Transmission and hydraulic lubricant BP Terrac Extra 10W/30 **Front axle lubricant** API GL5 - SAE 85W140

ENGINE: Make Sisu Diesel **Type** six cylinder vertical with turbocharger and air to air intercooler **Serial No.** ZU644841B **Crankshaft** lengthwise **Rated engine speed** 2200 **Bore and stroke** 4.251" x 4.724" (108.0 mm x 120.0 mm) **Compression ratio** 16.5 to 1 **Displacement** 402 cu in (6596 ml) **Starting system** 12 volt **Lubrication** pressure **Air cleaner** two paper elements and aspirator **Oil filter** one full flow cartridge **Oil cooler** engine coolant heat exchanger for crankcase oil, radiator for hydraulic and transmission oil **Fuel filter** one paper element **Muffler** vertical **Cooling medium temperature control** thermostat and variable speed fan

CHASSIS: Type 2WD & front wheel assist **Serial No.** G 085 10 **Tread width** rear 63.4" (1610 mm) to 74.8" (1900 mm) front: 2WD - 64.8" (1645 mm) to 88.6" (2250 mm), FWA - 63.4" (1630 mm) to 74.8" (2030 mm) **Wheelbase** 117.5" (2985 mm) **Hydraulic control system** direct engine drive **Transmission** selective gear fixed ratio with full range operator controlled powershift **Nominal travel speeds mph (km/h)** first 1.50 (2.41) second 1.94 (3.12) third 2.50 (4.02) fourth 2.85 (4.58) fifth 3.23 (5.19) sixth 3.68 (5.91) seventh 4.17 (6.70) eighth 4.75 (7.63) ninth 5.39 (8.66) tenth 6.13 (9.85) eleventh 6.94 (11.16) twelfth 7.91 (12.72) thirteenth 8.96 (14.41) fourteenth 10.21 (16.42) fifteenth 11.57 (18.60) sixteenth 14.94 (24.02) seventeenth 19.27 (30.99) eighteenth 24.89 (40.03) reverse 1.50 (2.41), 2.50 (4.02), 2.85 (4.58), 4.17 (6.70), 4.75 (7.63), 6.94 (11.16), 7.91 (12.72), 11.57 (18.60), 19.27 (30.99) **Clutch** multiple wet disc operated by foot pedal **Brakes** multiple wet disc hydraulically operated by two foot pedals that can be locked together **Steering** hydrostatic **Power take-off** 540 rpm at 1993 engine rpm or 1000 rpm at 2091 engine rpm **Unladen tractor mass** 2WD - 15390 lb (6980 kg), FWA - 16305 lb (7395 kg)

DRAWBAR PERFORMANCE

(Unballasted - Front Drive Engaged) MAXIMUM POWER IN SELECTED GEARS

Power Hp (kW)	Drawbar pull lbs (kN)	Speed mph (km/h)	Crank- shaft speed rpm	Slip %	Fuel lb/hp.hr (kg/kW.h)	Consumption Hp.hr/gal (kW.h/l)	Temp. °F(°C) cool- ing med	Air dry bulb	Barom. inch Hg (kPa)
3rd Gear									
83.4 (62.2)	13945 (62.0)	2.24 (3.61)	2276	15	0.646 (0.393)	11.00 (2.17)	185 (85)	72 (22)	29.4 (100.9)
4th Gear									
100.3 (74.8)	13885 (61.8)	2.71 (4.36)	2262	11	0.569 (0.346)	12.49 (2.46)	183 (84)	72 (22)	29.4 (100.9)
5th Gear									
113.0 (84.3)	13755 (61.2)	3.08 (4.96)	2239	9	0.542 (0.330)	13.10 (2.58)	185 (85)	72 (22)	29.4 (100.9)
6th Gear									
126.9 (94.6)	13725 (61.1)	3.47 (5.58)	2218	9	0.514 (0.312)	13.83 (2.72)	183 (84)	72 (22)	29.4 (100.9)
7th Gear									
135.6 (101.1)	13120 (58.4)	3.88 (6.24)	2154	8	0.489 (0.298)	14.52 (2.86)	187 (86)	72 (22)	29.4 (100.9)
8th Gear									
137.6 (102.6)	11630 (51.7)	4.44 (7.14)	2120	6	0.478 (0.291)	14.86 (2.93)	180 (82)	72 (22)	29.4 (100.9)
9th Gear									
140.1 (104.5)	10970 (48.8)	4.79 (7.71)	2002	6	0.457 (0.278)	15.53 (3.06)	180 (82)	72 (22)	29.4 (100.9)
10th Gear									
141.1 (105.2)	9735 (43.3)	5.44 (8.75)	1979	5	0.451 (0.275)	15.73 (3.10)	185 (85)	72 (22)	29.4 (100.9)
11th Gear									
140.8 (105.0)	8340 (37.1)	6.33 (10.19)	2017	4	0.457 (0.278)	15.53 (3.06)	185 (85)	72 (22)	29.4 (100.9)
12th Gear									
138.8 (103.5)	7215 (32.1)	7.21 (11.61)	2003	3	0.459 (0.279)	15.48 (3.05)	183 (84)	72 (22)	29.4 (100.9)
13th Gear									
139.7 (104.2)	6475 (28.8)	8.09 (13.02)	2003	4	0.455 (0.277)	15.62 (3.08)	183 (84)	72 (22)	29.4 (100.9)
14th Gear									
136.7 (101.9)	5585 (24.8)	9.18 (14.77)	1983	3	0.463 (0.282)	15.33 (3.02)	187 (86)	72 (22)	29.4 (100.9)

REPAIRS AND ADJUSTMENTS: No repairs or adjustments

REMARKS: All test results were determined from observed data obtained in accordance with official OECD test procedures. This tractor did not meet the manufacturer's 3 point lift claim of 19180 lbs (8700 kg) at link ends. The performance figures on this summary were taken from a test conducted under the OECD Code II test procedure.

We, the undersigned, certify that this is a true summary of data from OECD Reports No. **1847 & 1848**, Nebraska Summary 319, June 26, 2000.

Brent T. Sampson
Test Engineer

L.L. Bashford
M.F. Kocher
G.J. Hoffman
Board of Tractor Test Engineers

TRACTOR SOUND LEVEL WITH CAB	Front Wheel Drive	
	2WD dB(A)	Engaged dB(A)
At no load in 8th gear	74.0	74.0
Bystander	--	--

Tested Without Ballast

TIRES AND WEIGHT	FWA		2WD	
	FWA		2WD	
Rear tires - No., size, ply & psi(kPa)	Two 20.8R42; **,15(100)		Two 20.8R42; **,15(100)	
Front tires - No., size, ply & psi(kPa)	Two 16.9R30; **,15(100)		Two 14L-16.1 ;10; 36(250)	
Height of Drawbar	23.2 in (590 mm)		29.5 in (750 mm)	
Static Weight with operator- Rear	10460 lb (4745 kg)		10650 lb (4830 kg)	
- Front	6005 lb (2725 kg)		4905 lb (2225 kg)	
- Total	16465 lb (7470 kg)		15555 lb (7055 kg)	

DRAWBAR PERFORMANCE

(Unballasted - 2WD)

FUEL CONSUMPTION CHARACTERISTICS

Power Hp (kW)	Drawbar pull lbs (kN)	Speed mph (km/h)	Crank- shaft speed rpm	Slip %	Fuel Consumption lb/hp.hr (kg/kW.h)	Temp. °F cool- ing med	Temp. °C Air dry bulb	Barom. inch Hg (kPa)	
Maximum Power 10th Gear									
138.3 (103.1)	9635 (42.9)	5.38 (8.66)	1994	6	0.460 (0.280)	15.43 (3.04)	187 (86)	63 (17)	28.8 (97.6)
75% of Pull at Maximum Power 10th Gear									
100.4 (74.9)	6000 (26.7)	6.28 (10.10)	2260	4	0.547 (0.333)	12.99 (2.56)	185 (85)	63 (17)	28.8 (97.6)
50% of Pull at Maximum Power 10th Gear									
69.0 (51.4)	3990 (17.8)	6.48 (10.43)	2306	3	0.635 (0.386)	11.18 (2.20)	181 (83)	63 (17)	28.8 (97.6)
75% of Pull at Reduced Engine Speed 11th Gear									
100.4 (74.9)	5965 (26.5)	6.31 (10.15)	2009	4	0.507 (0.308)	14.01 (2.76)	183 (84)	63 (17)	28.8 (97.6)
50% of Pull at Reduced Engine Speed 11th Gear									
69.3 (51.7)	3985 (17.7)	6.52 (10.50)	2056	3	0.573 (0.349)	12.39 (2.44)	181 (83)	63 (17)	28.8 (97.6)
MAXIMUM POWER IN SELECTED GEARS									
2nd Gear									
60.8 (45.3)	12915 (57.5)	1.76 (2.84)	2314	16	0.703 (0.428)	10.10 (1.99)	187 (86)	63 (17)	28.8 (97.6)
3rd Gear									
77.5 (57.8)	12680 (56.4)	2.29 (3.69)	2291	14	0.635 (0.386)	11.18 (2.20)	189 (87)	63 (17)	28.8 (97.6)
4th Gear									
89.2 (66.5)	12395 (55.1)	2.70 (4.34)	2276	11	0.588 (0.357)	12.08 (2.38)	187 (86)	63 (17)	28.8 (97.6)
5th Gear									
99.6 (74.3)	12080 (53.7)	3.09 (4.97)	2258	9	0.566 (0.344)	12.54 (2.47)	189 (87)	63 (17)	28.8 (97.6)
6th Gear									
112.8 (84.1)	12005 (53.4)	3.52 (5.67)	2255	9	0.528 (0.321)	13.45 (2.65)	185 (85)	63 (17)	28.8 (97.6)
7th Gear									
126.9 (94.6)	11980 (53.3)	3.97 (6.39)	2223	9	0.514 (0.313)	13.81 (2.72)	185 (85)	63 (17)	28.8 (97.6)
8th Gear									
135.2 (100.8)	11410 (50.8)	4.44 (7.15)	2168	8	0.496 (0.302)	14.31 (2.82)	187 (86)	63 (17)	28.8 (97.6)
9th Gear									
136.0 (101.4)	10740 (47.8)	4.75 (7.64)	2026	8	0.476 (0.290)	14.92 (2.94)	189 (87)	63 (17)	28.8 (97.6)
10th Gear									
138.3 (103.1)	9645 (42.9)	5.38 (8.66)	1994	6	0.460 (0.280)	15.43 (3.04)	189 (87)	63 (17)	28.8 (97.6)
11th Gear									
137.3 (102.4)	8380 (37.3)	6.14 (9.89)	1989	5	0.460 (0.280)	15.43 (3.04)	187 (86)	63 (17)	28.8 (97.6)
12th Gear									
137.7 (102.7)	7380 (32.8)	7.00 (11.26)	1977	4	0.457 (0.278)	15.53 (3.06)	185 (85)	63 (17)	28.8 (97.6)
13th Gear									
138.0 (102.9)	6450 (28.7)	8.02 (12.91)	1983	4	0.458 (0.279)	15.51 (3.06)	187 (86)	63 (17)	28.8 (97.6)
14th Gear									
137.6 (102.6)	5580 (24.8)	9.25 (14.88)	1999	3	0.462 (0.281)	15.38 (3.03)	185 (85)	63 (17)	28.8 (97.6)

THREE POINT HITCH PERFORMANCE (OECD Static Test)

CATEGORY: II, III

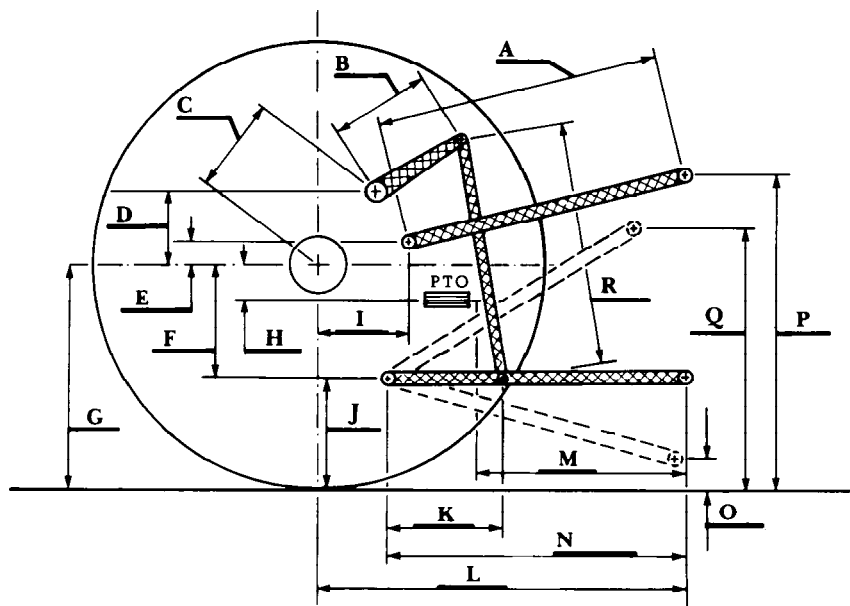
Quick Attach: None

Maximum Force Exerted

	Cat II	Cat III
Through Whole Range:	15150 lbs (67.4 kN)	13805 lbs (61.4 kN) (at the frame)
	14410 lbs (64.1 kN)	14635 lbs (65.1 kN) (at the hitch points)

- i) Opening pressure of relief valve: NA
- Sustained pressure of the open relief valve: 2800 psi (193 bar)
- ii) Pump delivery rate at minimum pressure: 30.9 GPM (116.8 l/min)
- iii) Pump delivery rate at maximum
 - hydraulic power: 27.8 GPM (105.2 l/min)
 - Delivery pressure: 2205 psi (152 bar)
 - Power: 35.8 HP (26.7 kW)

HITCH DIMENSIONS AS TESTED NO LOAD



	Cat II test		Cat III test	
	inch	mm	inch	mm
A	31.9	810	31.3	795
B	15.0	380	15.0	380
C	19.4	492	19.4	492
D	17.6	447	17.6	447
E	11.0	280	11.0	280
F	13.0	330	13.0	330
G	35.6	905	35.6	905
H	3.0	77	3.0	77
I	17.6	448	17.6	448
J	22.6	575	22.6	575
K	20.9	530	20.9	530
L	48.5	1231	47.9	1217
M	23.6	599	23.0	585
N	38.6	981	38.1	967
O	8.1	207	8.0	204
P	46.7	1185	49.6	1260
Q	33.1	841	33.1	841
R	35.6	905	35.6	905