

University of Nebraska - Lincoln

DigitalCommons@University of Nebraska - Lincoln

---

Historical Materials from University of Nebraska-  
Lincoln Extension

Extension

---

1963

## EC63-142 Can Gullies be Controlled?

Harold Gilman

Follow this and additional works at: <http://digitalcommons.unl.edu/extensionhist>

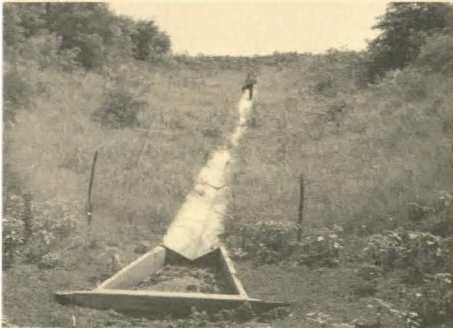
---

Gilman, Harold, "EC63-142 Can Gullies be Controlled?" (1963). *Historical Materials from University of Nebraska-Lincoln Extension*. 3582.

<http://digitalcommons.unl.edu/extensionhist/3582>

This Article is brought to you for free and open access by the Extension at DigitalCommons@University of Nebraska - Lincoln. It has been accepted for inclusion in Historical Materials from University of Nebraska-Lincoln Extension by an authorized administrator of DigitalCommons@University of Nebraska - Lincoln.

## More Gully Control



Gully control with a small concrete spillway and grass.



Gully control with the proper county road structure.



Gullies can be stopped by expensive concrete drops.

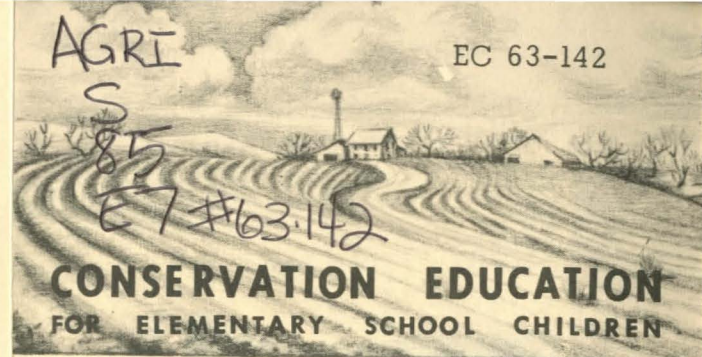


Some gullies can be controlled by seeding grasses.

## Conservation Education Publications

The following circulars form the conservation education series.

- EC 63-139 What Causes Soil Erosion?
- EC 63-140 Kinds of Erosion
- EC 63-141 What Causes Gullies?
- EC 63-142 Can Gullies Be Controlled?
- EC 63-143 What Is a Terrace?
- EC 63-144 What Is a Grassed Waterway?
- EC 63-145 What Is Wind Strip Cropping?
- EC 63-146 How Should Farm Ponds Be Managed?
- EC 63-147 Conservation Practices in Eastern Nebraska
- EC 63-148 Conservation Practices in Western Nebraska
- EC 63-149 Conservation Practices in the Sandhills
- EC 63-150 Shelterbelts?
- EC 63-151 Who Helps Nebraskans With Soil and Water Conservation?
- EC 63-152 Grass in Soil and Water Conservation
- EC 63-153 Stubble Mulch
- EC 63-154 Conservation Rotation
- EC 63-155 Bench Leveling



## Can Gullies Be Controlled?

By Harold H. Gilman



Yes

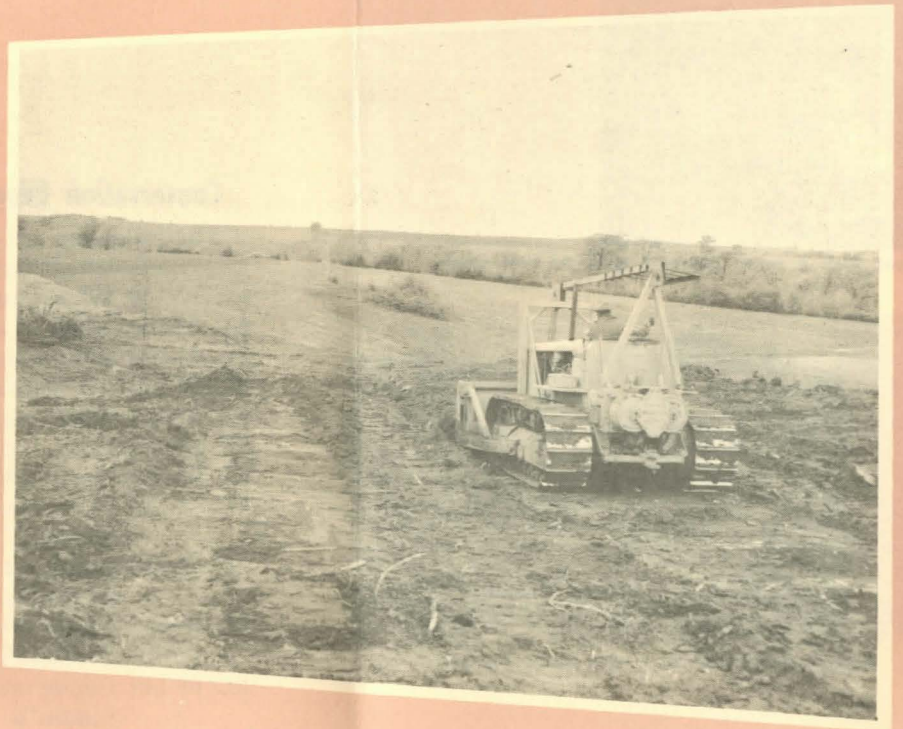
### 1. Control Gullies By:

- a. Constructing terraces and contouring the farm above the gully.
- b. Constructing a diversion terrace above the gully to run the water to a good grassed waterway or pasture.
- c. Using good cropping systems and pasture management above the gully.

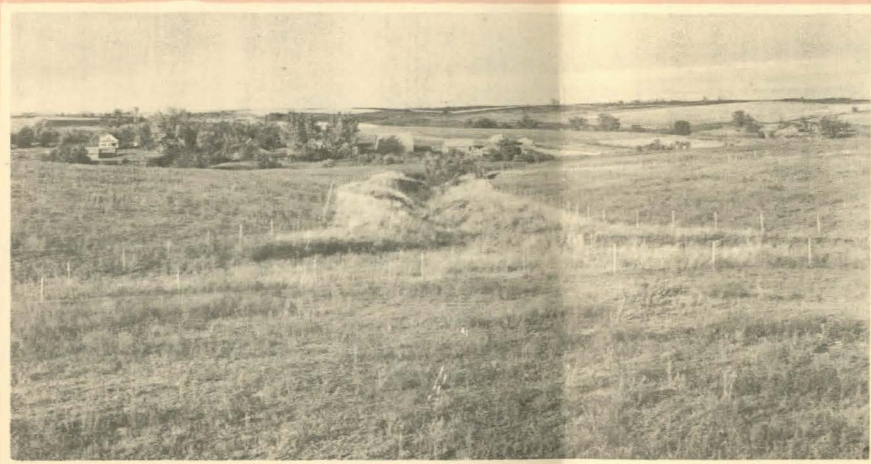
Extension Service, University of Nebraska College of Agriculture  
Cooperating with the U.S. Department of Agriculture  
and the College of Home Economics  
E. F. Frolik, Dean      J. L. Adams, Director



2. Build an erosion control dam.



4. Push dirt in the gully.



3. Fence the gully—keep out all livestock.



5. Level gully and seed it to the proper grasses.