

University of Nebraska - Lincoln

DigitalCommons@University of Nebraska - Lincoln

---

Great Plains Research: A Journal of Natural and  
Social Sciences

Great Plains Studies, Center for

---

February 1991

## ***Great Plains Research*: Editorial Matter, Volume 1, Number 1**

Follow this and additional works at: <https://digitalcommons.unl.edu/greatplainsresearch>



Part of the [Other International and Area Studies Commons](#)

---

"*Great Plains Research*: Editorial Matter, Volume 1, Number 1" (1991). *Great Plains Research: A Journal of Natural and Social Sciences*. 8.

<https://digitalcommons.unl.edu/greatplainsresearch/8>

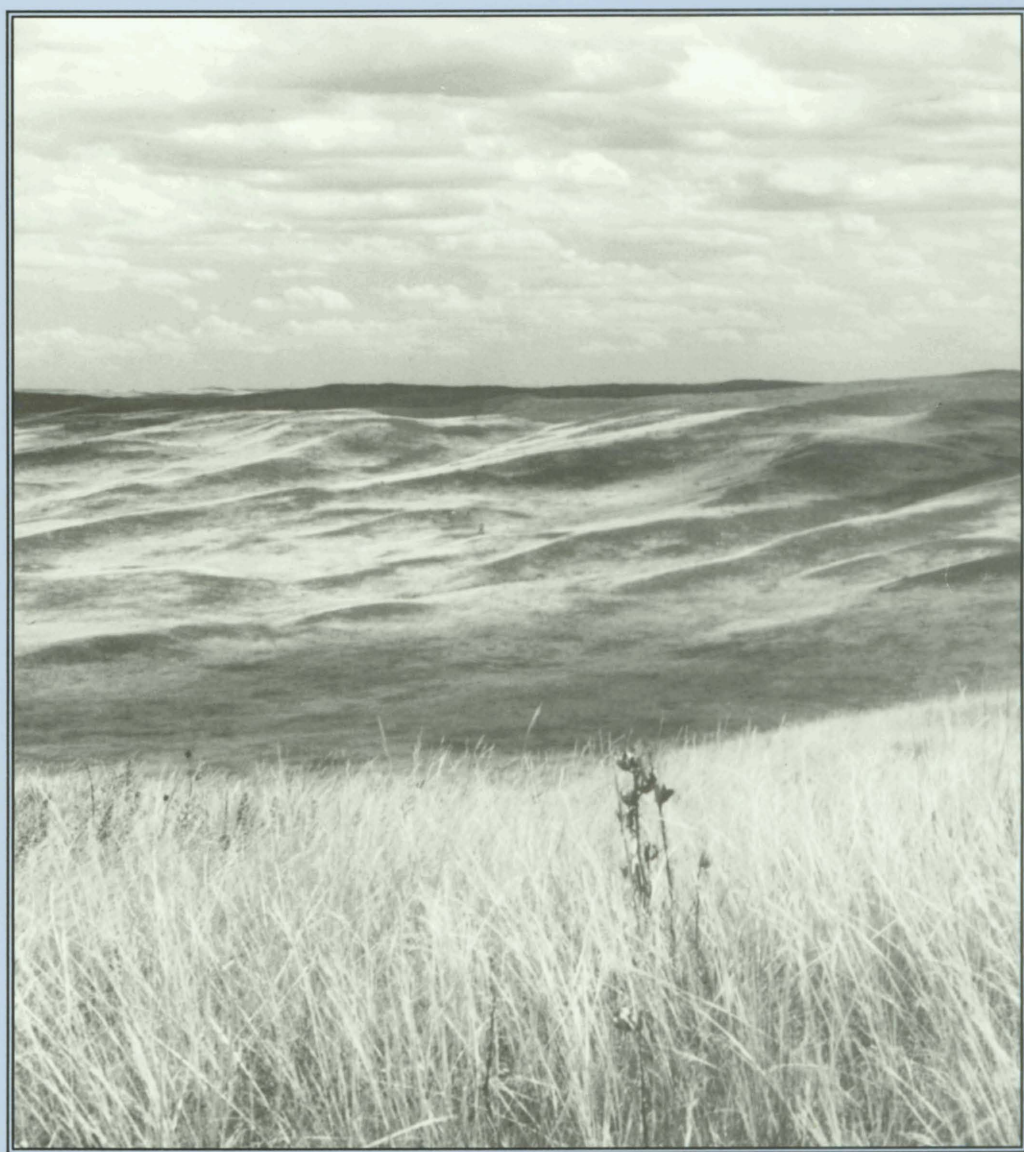
This Article is brought to you for free and open access by the Great Plains Studies, Center for at DigitalCommons@University of Nebraska - Lincoln. It has been accepted for inclusion in *Great Plains Research: A Journal of Natural and Social Sciences* by an authorized administrator of DigitalCommons@University of Nebraska - Lincoln.

# GREAT PLAINS RESEARCH

A JOURNAL OF  
NATURAL AND  
SOCIAL SCIENCES

Volume 1, Number 1

February 1991



CENTER FOR GREAT PLAINS STUDIES  
UNIVERSITY OF NEBRASKA

### Center for Great Plains Studies

The Center for Great Plains Studies was established in 1976 by the University of Nebraska to promote a greater understanding of the people, culture, history, and environment of the Great Plains through a variety of research, teaching, and outreach programs. To achieve this broad objective, the Center encompasses five divisions: Administration and Programs, the Great Plains Art Collection, *Great Plains Quarterly*, *Great Plains Research*, and *Journals of the Lewis and Clark Expedition* editing project. Administered through the College of Arts & Sciences of the University of Nebraska-Lincoln, the Center includes resident Fellows on four campuses and non-resident Fellows around the world. John R. Wunder, *History*, is director of the Center and Lynn K. White, *Sociology*, is associate director.

*Great Plains Research*, a biannual multidisciplinary journal, publishes original scholarly papers in the natural and social sciences dealing with issues of regional concern. It includes reports on symposia and conferences and reviews of books addressing topics pertaining to the Great Plains.

Editor: Paul A. Kay, *Geography*, University of Nebraska-Lincoln  
Editorial Assistant: Clare V. McKanna, Jr., University of Nebraska-Lincoln  
Production Editor: Linda J. Ratcliffe, University of Nebraska-Lincoln

### Associate Editors:

Elizabeth Grobsmith, *Anthropology*, University of Nebraska-Lincoln  
Kathleen H. Keeler, *Biological Sciences*, University of Nebraska-Lincoln  
David T. Lewis, *Agronomy*, University of Nebraska-Lincoln  
Lynn White, *Sociology*, University of Nebraska-Lincoln

### Board of Editorial Advisors:

J. David Aiken, *Agricultural Economics*, University of Nebraska-Lincoln  
Ludy T. Benjamin, *Psychology*, Texas A&M University  
Howard B. Bluestein, *Meteorology*, University of Oklahoma  
Jane H. Bock, *Biology*, University of Colorado at Boulder  
Wakefield Dort, Jr., *Geology*, University of Kansas  
Elmer J. Finck, *Environmental Biology*, Emporia State University  
William R. Freudenberg, *Rural Sociology*, University of Wisconsin-Madison  
Ardelle Lundeen, *Economics*, South Dakota State University  
James N. McCrorie, *Rural Sociology*, University of Regina  
W. Raymond Wood, *Anthropology*, University of Missouri-Columbia

Cover photo: Arapaho Prairie, Arthur County, Nebraska. Courtesy of Brett C. Ratcliffe.

GREAT PLAINS RESEARCH (ISSN 1052-5165) is published biannually in February and August by the Center for Great Plains Studies, 1215 Oldfather Hall, Lincoln, NE 68588-0317. Subscriptions United States Individual \$25.00, Institutional \$50.00; Canada Individual \$28.00, Institutional \$53.00; other foreign Individual \$35.00, Institutional \$60.00 per calendar year. Third class postage paid at Lawrence, KS. *Postmaster: send address changes and undeliverable copies to Great Plains Research, 1215 Oldfather Hall, Lincoln, NE 68588-0317. Return postage is guaranteed.* Phone: 402/472-3082.

• Copyright 1991 by the Center for Great Plains Studies

This publication is printed on acid-free recycled paper.

## GREAT PLAINS RESEARCH

Volume 1, Number 1	Contents	February 1991
<hr/>		
EDITOR'S NOTE		3
INTRODUCTION		4
ARTICLES		
The Geological Record of Wind Erosion, Eolian Deposition, and Aridity on the Southern High Plains	Vance T. Holliday	6
Drought and Precipitation Fluctuations in the Great Plains During the late Nineteenth Century	Cary J. Mock	26
Relationships Between 700 mb Circulation Variations and Great Plains Climate	Daniel J. Leathers	58
Hydroclimatic Variability on the Great Plains	Michael J. Keables	77
Snow Cover Variability on the Northern and Central Great Plains	David A. Robinson and Marilyn G. Hughes	93
Drought Experience and Perception of Climatic Change among Great Plains Farmers	David M. Diggs	114
Sustainability of the Great Plains in an Uncertain Climate	William E. Riebsame	133
Lowering Real Interest Rates Could Slow Global Warming	Craig S. Marxsen	152
CONFERENCE REPORT		
35th Annual Midwest Groundwater Conference		168
BOOK REVIEWS		
John R. Adams, Jr., <i>Damming the Colorado: The Rise of the Lower Colorado River Authority, 1933-1939.</i>	F. Andrew Schoolmaster	171
Don E. Albrecht and Steve H. Murdock, <i>The Sociology of U.S. Agriculture: An Ecological Perspective.</i>	Keith D. Parker	172
Scott L. Collins and Linda L. Wallace, <i>Fire in North American Tallgrass Prairies.</i>	Jane H. Bock	173
John F. Due, Benjamin J. Allen, Mary R. Kihl, and Michael R. Crumm, <i>Transportation Service to Small Rural Communities: Effects of Deregulation.</i>	L. Orlo Sorenson	174
Steven M. Gendel, A. David Kline, D. Michael Warren, and Faye Yates, <i>Agricultural Bioethics: Implications of Agricultural Biotechnology.</i>	Vernon W. Ruttan	175

## BOOK REVIEWS

- Paul A. Olson, *The Struggle for the Land: Indigenous Insight and Industrial Empire in the Semiarid World*. Adolph M. Greenberg 177
- Francis Paul Prucha, *Atlas of American Indian Affairs*. David J. Wishart 179
- James Earl Sherow, *Watering the Valley: Development Along the High Plains Arkansas River, 1870-1950*. James R. Shortridge 180
- Russell Thornton, *The Cherokees: A Population History*. Henry F. Dobyns 182
- Arnold van der Valk, *Northern Prairie Wetlands*. Richard A. Gersib 183
- William A. Weber, *Colorado Flora: Eastern Slope*. Robert B. Kaul 184

## NEWS AND NOTES

186

## EDITOR'S NOTE

Amid proliferation of specialty journals and rising subscription costs, why dare introduce a new journal? Many issues of society-environment interactions have come to prominence on the Great Plains in the past few years; some include droughts in the late 1980s, declining aquifers as irrigation and urbanization increase, proposals for a "Buffalo Commons," negotiations for a new Farm Bill, and issues of tribal sovereignty. These issues are not necessarily new, but national and international dynamics have reinvigorated the regional concern, prompting us to look both inward and outward. Our sister journal, *Great Plains Quarterly*, now in its eleventh year, has successfully addressed the issues of people and the Plains for a scholarly and lay audience in the humanities. Researchers in the social and natural sciences, however, have only had outlets of local or state purview or of national scope in which a regional study might seem too particular. Hence *Great Plains Research*.

*Great Plains Research* intends to present current research from across the spectra of the natural and social sciences on issues of interest and importance to the North American Plains region. Two issues of the journal will be published each year, one being largely thematic, drawing articles from the annual symposia of the Center for Great Plains Studies. Patterns and processes both within the region and affecting the region from larger scales are suitable for our purpose. Research may come from one of the social or natural sciences, but multidisciplinary or interdisciplinary work is particularly welcome. We invite your support for this new journal as a reader and subscriber, and especially as a contributor of quality manuscripts. Instructions for authors are printed on the inside back cover of this issue. The editor welcomes your correspondence.

Paul A. Kay

## NEWS AND NOTES

September 5-7, 1991, Laramie, Wyoming

### **Great Plains-Rocky Mountain Division, Association of American Geographers**

The Department of Geography, University of Wyoming, invites your attendance and participation in the annual meeting of the GPRM/AAG. The meeting is open to all geographers, educators in geography, and persons in related disciplines. Papers or posters on any geographical topic are welcome, and student participation is particularly encouraged; monetary prizes will be awarded for best student papers. Membership in the Association of American Geographers is not mandatory for participation. The meeting includes the following field trips on September 6: geomorphology and biogeography of the Laramie Basin and Medicine Bow Mountains; ranches and railroads in the Laramie Basin; forest practices in the Medicine Bow National Forest. Paper sessions will be September 7, and the day will conclude with a train excursion and barbecue. Deadline for abstracts is July 15. Details regarding attendance, participation, and accommodations can be obtained from Richard A. Marston, Department of Geography, University of Wyoming, Laramie, WY 82071-3371.

September 10-13, 1991, Salt Lake City, Utah

### **20th Conference on Agricultural and Forest Meteorology**

This conference, sponsored by the American Meteorological Society, will include sessions on crop microclimate, evapotranspiration within crop canopies, operational agricultural weather forecasting, applications of remote sensing, and crop models. The conference will coincide with the AMS's Tenth Conference on Biometeorology and Aerobiology and Seventh Conference on Applied Climatology. Papers of interest to Great Plains scholars should be abundant. For information, contact Dr. Katherine B. Pessy, Department of Horticulture, North Carolina State University, Raleigh, NC 27695-7609.

September 25-29, 1991, Mackinac Island, Michigan

### **Sixth North American Fur Trade Conference**

The conference site is the historic Grand Hotel on the island that was the trade center and cultural crossroads of the North American fur trade. The preliminary program lists several papers of interest to Great Plains scholars, including a session on fur trade sites on the prairies. Program, showing paper sessions, excursions, registration, and accommodation, may be obtained from Sixth North American Fur Trade Conference, Mackinac State Historic Parks, P.O. Box 370, Mackinac Island, MI 49757.

CALL FOR PAPERS

EXPLORING THE GREAT PLAINS:  
CONTINUING THE COLUMBIAN LEGACY

16th Annual Interdisciplinary Symposium

sponsored by the

Center for Great Plains Studies

University of Nebraska-Lincoln

April 8–10, 1992

The Center invites scholars to submit proposals on the topic “Exploring the Great Plains: Continuing the Columbian Legacy,” interpreting the idea of exploration in its widest sense. Traditional exploration topics are certainly welcome, including explorers from the era of imperial rivalry, such as Coronado, Bourgmont, the La Verendryes, Mackay and Evans, and Larocque; early nineteenth-century American explorers, such as Lewis and Clark, Pike, and Long; artists-explorers, such as Catlin, Bodmer, Kane, Miller, Bierstadt, Moran, and Jackson; scientific and literary explorers such as Nuttall, James, Maximilian, Macoun, and Audubon; fur trade explorers such as Colter, Hunt, Stuart, Mackenzie, and Bonneville; agricultural surveyors such as Palliser and Hind; the Pacific railway surveys; and the Great Surveys (Fremont, Emory, Wheeler, and Hayden).

Viewing exploration as including the ideas of discovery and rediscovery, the Center is also interested in broadly defined topics for the conference. Such topics might include: native American discovery of and adaptation to the plains; literary discoverers and travel writers, such as Parkman, Twain, Irving, Steinbeck, Least Heat Moon, and Frazier; emigrant and ethnic writers and diarists, from nineteenth-century pioneers to modern refugees; the discovery and introduction of new plant and animal species; and the discovery of plains potentials, including the use, misuse, and abuse of plains resources.

Interested scholars should submit proposals of 150–200 words by **July 1, 1991**, and include a brief resumé. Persons whose proposals are accepted will be expected to submit final papers by **February 1, 1992**. The *Great Plains Quarterly* and/or *Great Plains Research*, the Center’s scholarly journals, have right of first refusal on all papers presented at the conference.

The Center will seek funding from various granting agencies to support conference expenses. The Center may be able to provide some financial assistance to participants for the costs of travel and lodging, provided such individuals cannot secure support from their own institutions and provided that adequate funding for such expenses is obtained.

Submit your proposal by **July 1, 1991**, to:

**Professor Gary E. Moulton**

**Center for Great Plains Studies**

1213 Oldfather Hall, University of Nebraska-Lincoln

Lincoln, NE 68588-0314

402-472-3082, FAX: 402-472-1123



# GREAT PLAINS QUARTERLY

*Great Plains Quarterly* is a scholarly, interdisciplinary journal published by the Center for Great Plains Studies of the University of Nebraska–Lincoln. The *Quarterly* publishes research and criticism that is significant to life and land in the Great Plains region and welcomes the submission of manuscripts. It seeks a readership among all persons interested in the region.



Subscription Rate:

Individual

1 year—\$15.00

2 years—\$28.00

Institutional

1 year—\$20.00

2 years—\$33.00

*Send check or  
money order to:*

Great Plains Quarterly  
1214 Oldfather Hall  
University of Nebraska–Lincoln  
Lincoln, Nebraska 68588-0313  
(402) 472-6058

# The Journals of the Lewis and Clark Expedition

*Volume 6, November 2, 1805–March 22, 1806*

Edited by Gary E. Moulton

"These journals of exploits and courage in a pristine West have a simplicity and timelessness about them – never failing to capture the imagination."

– Mary Lee Spence, *Montana*. The sixth volume in this widely heralded series portrays the party's interactions with the Indians of the lower Columbia River and the coast. No other volume in this edition has such a wealth of ethnographic and natural history materials. \$50.00

Sponsored by the Center for Great Plains Studies,  
University of Nebraska-Lincoln, and the American  
Philosophical Society.

## Earlier volumes in series

Atlas of the Lewis and Clark Expedition,

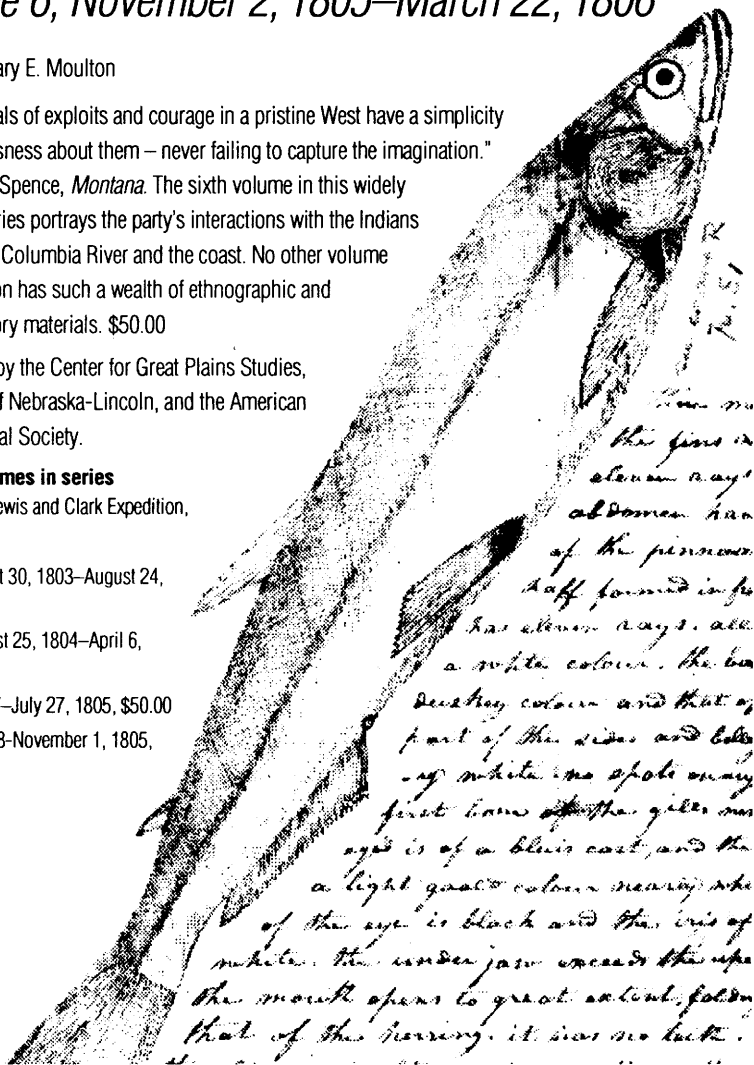
\$100.00

Vol. 2: August 30, 1803–August 24,  
1804, \$50.00

Vol. 3: August 25, 1804–April 6,  
1805, \$50.00

Vol. 4: April 7–July 27, 1805, \$50.00

Vol. 5: July 28–November 1, 1805,  
\$50.00



*Nebraska*

Please write for standing order information

The University of Nebraska Press · 901 N 17 · Lincoln 68588 publishers since 1941

CALL FOR PAPERS!

**GREAT PLAINS RESEARCH**  
A JOURNAL OF NATURAL AND SOCIAL SCIENCES

*Great Plains Research*, a biannual multidisciplinary journal, publishes original scholarly papers in the natural and social sciences dealing with issues of regional concern. It includes reports on symposia and conferences and reviews of books addressing topics pertaining to the Great Plains.

We invite submissions of manuscripts from regional scholars. Papers should report original findings, and be written to be both a contribution to the author's discipline and of interest to a multidisciplinary audience. Prospective authors should write to the Editor for information about style and submission procedures. See Instructions to Authors on the inside back cover of this issue.

Publisher:  
Center for Great Plains Studies  
University of Nebraska

Editor: Paul A. Kay, Geography, University of Nebraska-Lincoln  
Associate Editors:  
Elizabeth Grobsmith, Anthropology, University of Nebraska-Lincoln  
Kathleen Keeler, Biological Sciences, University of Nebraska-Lincoln  
David Lewis, Agronomy, University of Nebraska-Lincoln  
Lynn White, Sociology, University of Nebraska-Lincoln

Mailing address:  
Great Plains Research, 1215 Oldfather Hall, University of Nebraska-Lincoln, Lincoln,  
NE 68588-0317

## INSTRUCTIONS TO AUTHORS

*Great Plains Research* publishes original research in the natural and social sciences on topics and issues concerning the Great Plains. Papers represent high levels of scholarship in and contributions to the discipline(s) of the author(s), while being comprehensible to a multidisciplinary community of scholars and lay readers who share interest in the region. Review articles may be published if they represent a programmatic statement of research directions. Authors of unsolicited reviews of symposia, conferences, and books should contact the editor before submitting their manuscripts.

**Submissions.** All manuscripts should be typed double-spaced on 8.5 inch by 11 inch white bond paper, with at least 1 inch margins all around. The manuscript should be double-spaced throughout, including abstract, quotations, and bibliography. Informational footnotes are not accepted. Authors should submit three copies of their manuscripts to the Editor, *Great Plains Research*, Center for Great Plains Studies, 1215 Oldfather Hall, University of Nebraska, Lincoln, NE 68588-0317. If and when the manuscript is accepted for publication, authors will be asked to submit the manuscript on computer disk (3.5" or 5.25", normal or high density). The text file should be prepared in WordPerfect or ASCII.

**Style.** *Great Plains Research* utilizes *The Chicago Manual of Style*, 13th edition, as its reference guide. The journal utilizes author-date citations in the text and a complete bibliography that gives author, date, title, source, and page references.

For a journal article:

Dunn, C. 1990. The Manitoba cabinet in the Liberal-Progressive era, 1922-1958. *Prairie Forum* 15:85-102.

For a book:

Blouet, B. W. and F. C. Luebke. 1979. *The Great Plains: Environment and Culture*. Lincoln, NE: University of Nebraska Press.

For an article in a book or conference volume:

Bennett, J. W. 1990. Human adaptations to the North American Great Plains and similar environments. In *The Struggle for the Land*, ed. P. A. Olson, 103-26. Lincoln, NE: University of Nebraska Press.

**Abstract.** A short abstract, up to 150 words, should precede the main text. The abstract should identify the problem addressed in the paper, indicate the methodology, and summarize the results. Authors should pay particular attention to preparing an abstract that will be interesting to and understood by nonspecialists in the field.

**Illustrations.** All illustrations must be referenced parenthetically by arabic numbers in the text. For example, not "Figure 1 shows the distribution of rainfall" but "Rainfall increases with elevation (Fig. 1)." Final forms suitable for camera-ready reproduction are the responsibility of the authors, but copies are sufficient for the review process. However, all illustrations should be reduced to the 4.375" (4 3/8") width and made into a legible black and white photo print. Authors should take care that their figures will be legible when reduced in size and reproduced (The text area of the journal's page is 4.375" wide by 7.0" tall). Figure identification marks on the backs of photo prints should be made with red grease pencil only. Captions for each figure should be typed on a separate sheet and not be included in the figure itself.

**Tables.** Tables should be presented on separate sheets apart from the text. They should be formatted to fit the standard page size or column size of the journal. Tables will be treated as camera-ready illustrations at the time of publication.

**Review process.** All manuscripts are given double-blind review. Authors therefore should prepare a title page with their name and affiliation, and any acknowledgements, which will not be sent to reviewers. The title of the paper should also appear directly above the abstract. Authors should be careful to avoid self-identification in the text. When two external reviewers with expertise in the topic have submitted their evaluations, the manuscript is reviewed by the associate editors before final decision by the Editor.