

University of Nebraska - Lincoln

DigitalCommons@University of Nebraska - Lincoln

Great Plains Research: A Journal of Natural and
Social Sciences

Great Plains Studies, Center for

August 1991

***Great Plains Research*: Editorial Matter, Volume 1, Number 2**

Follow this and additional works at: <https://digitalcommons.unl.edu/greatplainsresearch>



Part of the [Other International and Area Studies Commons](#)

"*Great Plains Research*: Editorial Matter, Volume 1, Number 2" (1991). *Great Plains Research: A Journal of Natural and Social Sciences*. 40.

<https://digitalcommons.unl.edu/greatplainsresearch/40>

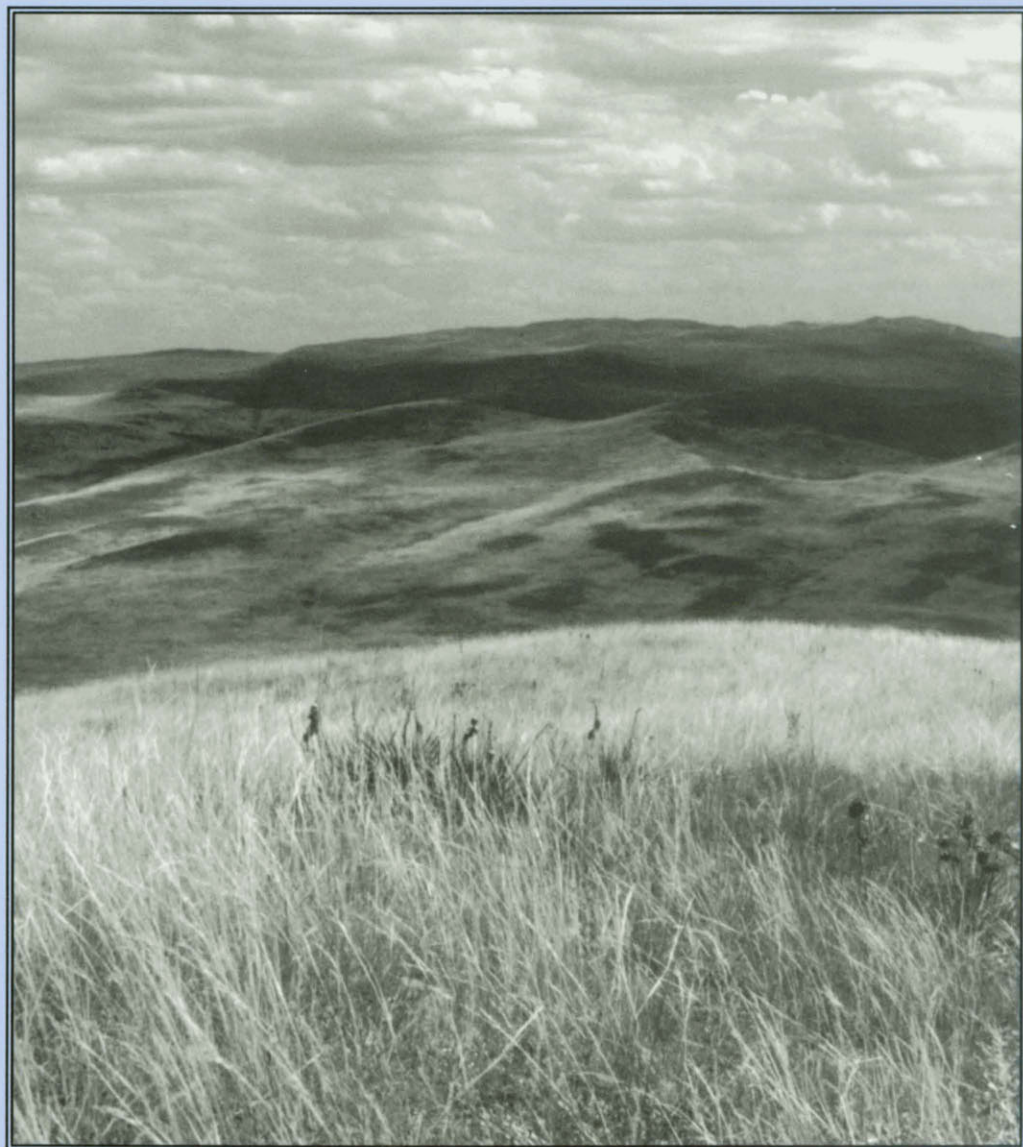
This Article is brought to you for free and open access by the Great Plains Studies, Center for at DigitalCommons@University of Nebraska - Lincoln. It has been accepted for inclusion in Great Plains Research: A Journal of Natural and Social Sciences by an authorized administrator of DigitalCommons@University of Nebraska - Lincoln.

GREAT PLAINS RESEARCH

A JOURNAL OF
NATURAL AND
SOCIAL SCIENCES

Volume 1, Number 2

August 1991



CENTER FOR GREAT PLAINS STUDIES
UNIVERSITY OF NEBRASKA

Center for Great Plains Studies

The Center for Great Plains Studies was established in 1976 by the University of Nebraska to promote a greater understanding of the people, culture, history, and environment of the Great Plains through a variety of research, teaching, and outreach programs. To achieve this broad objective, the Center encompasses five divisions: Administration and Programs, the Great Plains Art Collection, *Great Plains Quarterly*, *Great Plains Research*, and *Journals of the Lewis and Clark Expedition* editing project. Administered through the College of Arts & Sciences of the University of Nebraska-Lincoln, the Center includes resident Fellows on four campuses and non-resident Associate Fellows around the world. John R. Wunder, *History*, is director of the Center and Lynn K. White, *Sociology*, is associate director.

Great Plains Research, a biannual multidisciplinary journal, publishes original scholarly papers in the natural and social sciences dealing with issues of regional concern. It includes reports on symposia and conferences and reviews of books addressing topics pertaining to the Great Plains.

Editor: Paul A. Kay, *Geography*, University of Nebraska-Lincoln
Editorial Assistant: Clare V. McKanna, Jr., University of Nebraska-Lincoln
Production Editor: Linda J. Ratcliffe, University of Nebraska-Lincoln

Associate Editors:

Elizabeth Grobsmith, *Anthropology*, University of Nebraska-Lincoln
Kathleen H. Keeler, *Biological Sciences*, University of Nebraska-Lincoln
David T. Lewis, *Agronomy*, University of Nebraska-Lincoln
Lynn White, *Sociology*, University of Nebraska-Lincoln

Board of Editorial Advisors:

J. David Aiken, *Agricultural Economics*, University of Nebraska-Lincoln
Ludy T. Benjamin, *Psychology*, Texas A&M University
Howard B. Bluestein, *Meteorology*, University of Oklahoma
Jane H. Bock, *Biology*, University of Colorado at Boulder
Wakefield Dort, Jr., *Geology*, University of Kansas
Elmer J. Finck, *Environmental Biology*, Emporia State University
William R. Freudenberg, *Rural Sociology*, University of Wisconsin-Madison
William Laycock, *Range Management*, University of Wyoming
Ardelle Lundeen, *Economics*, South Dakota State University
James N. McCrorie, *Rural Sociology*, University of Regina
W. Raymond Wood, *Anthropology*, University of Missouri-Columbia

Cover photo: Arapaho Prairie, Arthur County, Nebraska. Courtesy of Brett C. Ratcliffe.

GREAT PLAINS RESEARCH (ISSN 1052-5165) is published biannually in February and August by the Center for Great Plains Studies, 1215 Oldfather Hall, Lincoln, NE 68588-0317. Subscriptions: United States Individual \$25.00, Institutional \$50.00; Canada Individual \$28.00, Institutional \$53.00; other foreign Individual \$35.00, Institutional \$60.00 per calendar year. Third class postage paid at Lawrence, KS. *Postmaster: send address changes and undeliverable copies to Great Plains Research, 1215 Oldfather Hall, Lincoln, NE 68588-0317. Return postage is guaranteed.* Phone: 402/472-3082.

© Copyright 1991 by the Center for Great Plains Studies
This publication is printed on acid-free recycled paper.

GREAT PLAINS RESEARCH

Volume 1, Number 2	CONTENTS	August 1991
EDITOR'S NOTE		194
ARTICLES		
The Rural-Urban Continuum and Environmental Concerns		
<i>J. Allen Williams, Jr. and Helen A. Moore</i>		195
Farm Women's Labor Contributions to Agricultural Operations		
<i>Audie Blevins and Katherine Jensen</i>		215
Frontier Flintlocks: A Fault Tree Analysis of Firearm Use		
at Contact Period Sites of the Great Plains		
<i>Peter Bleed and Daniel Watson</i>		233
The Lucanidae and Passalidae (Insecta: Coleoptera) of Nebraska		
<i>Brett C. Ratcliffe</i>		249
Global Change in the High Plains of North America		
<i>J. H. Bock, W. D. Bowman, and C. E. Bock</i>		283
Observed Variations in Great Plains Seasonal Temperatures		
During the Past Century	<i>Nolan J. Doesken & Thomas B. McKee</i>	302
Economic Development Programs in the Great Plains:		
The Example of Nebraska	<i>Michael Broadway</i>	324
CONFERENCE REPORT		
Assoc. of American Geographers, Great Plains-Rocky Mt. Division		345
BOOK REVIEWS		
Ludy T. Benjamin, Jr., <i>Harry Kirke Wolfe: Pioneer in Psychology.</i>		
Daniel J. Bernstein		347
Michael J. Ellis, Gregory V. Steels, and Perry B. Wigley,		
<i>Groundwater Levels in Nebraska, 1989.</i>	M. Stanley Dart	348
Charles A. Francis, Cornelia Butler Flora, and Larry D. King,		
<i>Sustainable Agriculture in Temperate Zones.</i>	David R. Lighthall	349
Thomas H. Lewis, <i>The Medicine Men: Oglala Sioux</i>		
<i>Ceremony and Healing.</i>	Elizabeth Grobsmith	351
M. V. S. Raju, <i>The Wild Oat Inflorescence and Seed: Anatomy,</i>		
<i>Development and Morphology.</i>	David M. Sutherland	353
Lois L. Ross, <i>Harvest of Opportunity: New Horizon</i>		
<i>for Farm Women.</i>	Katherine Jensen	354
James R. Shortridge, <i>The Middle West: Its Meaning</i>		
<i>in American Culture.</i>	John Fraser Hart	356
Jim Silver and Jeremy Hull, eds., <i>The Political Economy</i>		
<i>of Manitoba.</i>	Ralph F. Harris	357
Barry K. Wilson, <i>Farming the System: How Politicians</i>		
<i>and Producers Shape Canadian Agricultural Policy.</i>	George E. Lee	359
NEWS AND NOTES		361
INDEX		363

EDITOR'S NOTE

The topics addressed in this issue are as diverse as the Plains themselves. Some papers are firmly social science, others natural science, and some are at the interface. Several papers present basic data, others question standard wisdom, and some lay the groundwork for speculations about the future.

The view that rural residents evince less concern for the environment than do urbanites persists despite inconsistent research findings. Allen Williams and Helen Moore augment residential with occupational categories in their survey of Nebraskans to demonstrate the multidimensionality of concern on environmental issues.

Audie Blevins and Katherine Jensen determine the contribution by and the motivation for women's employment away from the farm or ranch in Wyoming. The primary determinants of women seeking outside employment are age and education. The conflict between the need for outside income and impacts on farm operations is acutely recognized.

Peter Bleed and Daniel Watson enumerate flintlock parts in Indian and Euro-American archaeological sites from the contact period. A fault-tree analysis provides a framework for interpretation of differences in the reuse of parts from broken firearms. Their interpretation suggests sophisticated acceptance and use of technology by Indians.

Brett Ratcliffe documents six species of beetles in Nebraska. All are at their western range limit, and five are first published records in the state. Their occurrence in gallery forests illustrates the interfingering of environments in the Plains, and suggests that they, and perhaps other species, will be found elsewhere in the region.

Jane Bock and her coauthors consider the roles of drought, fire, and crops and livestock in grassland ecology. They speculate on the impacts that climatic change in the context of global warming may have on the grasslands. Monitoring and modelling are needed as part of an overall strategy of adjustment to and coping with change.

Nolan Doesken and Thomas McKee display the patterns of seasonal temperature variations during most of this century across the Plains, and especially in Colorado. The patterns are complex and have varied by season, suggesting that climatic change may have different expressions in our region.

State efforts to direct economic development are illustrated by Nebraska's promotion of rural job creation with its economic development plan. Michael Broadway's study of Lexington suggests that housing policy has helped avert, initially at least, many of the social disruptions associated with sudden population growth by employment-related immigration.

NEWS AND NOTES

April 9-11, 1992, Lincoln, NE

16th Annual Symposium, Center for Great Plains Studies

The theme of this installment of the Center's annual interdisciplinary symposia will be **Exploring the Great Plains: Continuing the Columbian Legacy**. Some papers will address the history of botanical exploration and early scientific explorations. Information about the program and registration may be obtained by writing to the Center for Great Plains Studies, 1213 Oldfather Hall, University of Nebraska-Lincoln, Lincoln, NE 68588-0314.

May 10-15, 1992, Saskatoon, Saskatchewan

Third International Symposium on Issues in Health, Safety, and Agriculture

Many topics at the third symposium are likely to be of special interest to Great Plains scholars. Among them are the following: exposure to agricultural chemicals, grain dust and health, stress and psychiatric problems related to farming and rural areas, sustainable agriculture and health, and rural health delivery. The symposium is organized by the Centre for Agricultural Medicine, University of Saskatchewan, the National Institute for Occupational Safety and Health, and the Committee on Occupational Health and Agriculture of the International Commission on Occupational Health. Information on the meeting program and registration can be obtained from M. Gillis-Cipywnyk, Symposium Coordinator, Centre for Agricultural Medicine, Royal University Hospital, Saskatoon, Saskatchewan S7N 0X0.

CALL FOR PAPERS

August 6-9, 1992, Windsor, Ontario

Thirteenth North America Prairie Conference

The North America Prairie Conference will convene for the first time outside the United States when it meets in Windsor, in the Prairie Peninsula. A call for papers solicits submissions on all aspects of prairie environments, including restoration and management, human interactions, Native Americans and prairie, ecology, fire, fauna, wetlands, and so on. Abstracts are due by **April 1, 1992**. For abstract instructions and conference information, contact Paul Pratt, Department of Parks and Recreation, 2450 McDougall, Windsor, Ontario N8X 3N6.

CALL FOR PAPERS

April 22-24, 1993, Lincoln, NE

17th Annual Symposium, Center for Great Plains Studies

The Center's 17th annual interdisciplinary symposium in 1993 will have as its theme, **Architecture and the Great Plains: The Built Environment, Past and Present**. The Center invites proposals for papers on the general topic of structure and space and the Great Plains. Among the themes that might be appropriate are the following: impact of the physical and cultural context of the Plains upon design and construction of the region's built environment; features of habitation distinctive to the region; comparison of Great Plains built environments with those of other plains regions or those created by the same cultures in different natural landscapes. Proposals are due by **July 1, 1992**. For information, contact Professor H. Keith Sawyers, Center for Great Plains Studies, 1213 Oldfather Hall, University of Nebraska-Lincoln, Lincoln, NE 68588-0314.

ANNUAL INDEX

- Adams, John R., Jr. *Damming the Colorado: The Rise of the Lower Colorado Authority, 1933-1939*, reviewed, 171-72
- Agricultural Bioethics: Implications of Agricultural Biotechnology*, Steven M. Gendel, A. David Kline, D. Michael Warren, and Faye Yates, eds., reviewed, 175-77
- Albrecht, Don. E. and Steve H. Murdock. *The Sociology of U.S. Agriculture: An Ecological Perspective*, reviewed, 172
- Allen, Benjamin J. *See* John F. Due
- Atlas of American Indian Affairs*, Francis Paul Prucha, reviewed, 179-80
- Benjamin, Ludy T., Jr. *Harry Kirke Wolfe: Pioneer in Psychology*, reviewed, 347-48
- Bernstein, Daniel J. book review by, 347-48
- Bleed, Peter and Daniel Watson. "Frontier Flintlocks: A Fault Tree Analysis of Firearm Use at Contact Period Sites of the Great Plains," 233-48
- Blevins, Audie and Katherine Jensen. "Farm Women's Labor Contributions to Agricultural Operations," 215-32
- Bock, Jane H. book review by, 173-74
- Bock, J. C., W. D. Bowman, and C. E. Bock. "Global Change in the High Plains of North America," 283-301
- Bock, C. E. *See* J. C. Bock
- Bowman, W. D. *See* J. C. Bock
- Broadway, Michael. "Economic Development Programs in the Great Plains: The Example of Nebraska," 324-44
- Cherokees: A Population History*, The, Russell Thornton, reviewed, 182-83
- Collins, Scott L. and Linda L. Wallace, eds. *Fire in North American Tallgrass Prairies*, reviewed, 173-74
- Colorado Flora: Eastern Slope*, William A. Weber, reviewed, 184-85
- Crumm, Michael R. *See* John F. Due
- Damming the Colorado: The Rise of the Lower Colorado Authority, 1933-1939*, John R. Adams, Jr., reviewed, 171-72
- Dart, M. Stanley. book review by, 348-49
- Diggs, David M. "Drought Experience and Perception of Climatic Change Among Great Plains Farmers," 114-32
- Dobyns, Henry F. book review by, 182-83
- Doesken, Nolan J. and Thomas B. McKee. "Observed Variations in Great Plains Seasonal Temperatures During the Past Century," 302-23
- "Drought and Precipitation Fluctuations in the Great Plains During the Late Nineteenth Century," Cary J. Mock, 26-57

- "Drought Experience and Perception of Climatic Change Among Great Plains Farmers," David M. Diggs, 114-32
- Due, John F., Benjamin J. Allen, Mary R. Kihl, and Michael R. Crumm. *Transportation Service to Small Rural Communities: Effects of Deregulation*, reviewed, 174-75
- "Economic Development Programs in the Great Plains: The Example of Nebraska," Michael Broadway, 324-44
- Ellis, Michael J., Gregory V. Steele, and Perry B. Wigley. *Groundwater Levels in Nebraska, 1989*, reviewed, 348-49
- "Farm Women's Labor Contributions to Agricultural Operations," Audie Blevins and Katherine Jensen, 215-32
- Farming the System: How Politicians and Producers Shape Canadian Agricultural Policy*, Barry K. Wilson, reviewed, 359-60
- Fire in North American Tallgrass Prairies*, Scott L. Collins and Linda L. Wallace, eds., reviewed, 173-74
- Flora, Cornelia Butler. See Charles A. Francis
- Francis, Charles A., Cornelia Butler Flora, and Larry D. King, eds. *Sustainable Agriculture in Temperate Zones*, reviewed, 349-51
- "Frontier Flintlocks: A Fault Tree Analysis of Firearm use at Contact Period Sites of the Great Plains," Peter Bleed and Daniel Watson, 233-48
- Gendel, Steven M., A. David Kline, D. Michael Warren, and Faye Yates, eds. *Agricultural Bioethics: Implications of Agricultural Biotechnology*, reviewed, 175-77
- "Geologic Record of Wind Erosion, Eolian Deposition, and Aridity on the Southern High Plains," Vance T. Holliday, 6-25
- Gersib, Richard A. book review by, 183-84
- "Global Change in the High Plains of North America," J. H. Bock, W. D. Bowman, and C. E. Bock, 283-301
- Greenberg, Adolph M. book review by, 177-79
- Grobsmith, Elizabeth S. book review by, 351-53
- Groundwater Levels in Nebraska, 1989*, Michael J. Ellis, Gregory V. Steele, and Perry B. Wigley, reviewed, 348-49
- Harris, Ralph F. book review by, 357-59
- Harry Kirke Wolfe: Pioneer in Psychology*, Ludy T. Benjamin, Jr., reviewed, 347-48
- Hart, John Fraser. book review by, 356-57
- Harvest of Opportunity: New Horizons for Farm Women*, Lois L. Ross, reviewed, 354-56
- Holliday, Vance T. "Geologic Record of Wind Erosion, Eolian Deposition, and Aridity on the Southern High Plains," 6-25
- Hughes, Marilyn G. See David A. Robinson

- Hull, Jeremy. *See* Jim Silver
- "Hydroclimatic Variability on the Great Plains," Michael J. Keables, 77-92
- Jensen, Katherine. book review by, 354-56; *see* Audie Blevins
- Kaul, Robert B. book review by, 184-85
- Keables, Michael J. "Hydroclimatic Variability on the Great Plains," 77-92
- Kihl, Mark R. *See* John F. Due
- King, Larry D. *See* Charles A. Francis
- Kline, David A. *See* Steven M. Gendel
- Leathers, Daniel J. "Relationships Between 700 mb Circulation Variations and Great Plains Climate," 58-76
- Lee, George E. book review by, 359-60
- Lewis, Thomas H. *The Medicine Men: Oglala Sioux Ceremony and Healing*, reviewed, 351-53
- Lighthall, David R. book review by, 349-51
- "Lowering Real Interest Rates Could Slow Global Warming," Craig S. Marxsen, 152-67
- "Lucanidae and Passalidae (Insecta: Coleoptera) of Nebraska, The," Brett C. Ratcliffe, 249-82
- Marxsen, Craig S. "Lowering Real Interest Rates Could Slow Global Warming," 152-67
- McKee, Thomas B. *See* Nolan J. Doesken
- Medicine Men: Oglala Sioux Ceremony and Healing, The*, Thomas H. Lewis, reviewed, 351-53
- Middle West: Its Meaning in American Culture, The*, James R. Shortridge, reviewed, 356-57
- Mock, Cary J. "Drought and Precipitation Fluctuations in the Great Plains During the Late Nineteenth Century," 26-57
- Moore, Helen A. *See* J. Allen Williams, Jr.
- Murdock, Steve. *See* Don E. Albrecht
- Northern Prairie Wetlands*, Arnold van der Valk, ed., reviewed, 183-84
- "Observed Variations in Great Plains Seasonal Temperatures During the Past Century," Nolan J. Doesken and Thomas B. McKee, 302-23
- Olson, Paul A. *The Struggle for the Land: Indigenous Insight and Industrial Empire in the Semiarid World*, reviewed, 177-78
- Parker, Keith D. book review by, 172
- Political Economy of Manitoba, The*, Jim Silver and Jeremy Hull, eds., reviewed, 357-59
- Prucha, Francis Paul. *Atlas of American Indian Affairs*, reviewed, 179-80
- Raju, M. V. S. *The Wild Oat Inflorescence and Seed: Anatomy, Development and Morphology*, reviewed, 353-54
- Ratcliffe, Brett C. "The Lucanidae and Passalidae (Insecta: Coleoptera) of Nebraska," 249-82

- "Relationships Between 700 mb Circulation Variations and Great Plains Climate," Daniel J. Leathers, 58-76
- Riebsame, William E. "Sustainability of the Great Plains in an Uncertain Climate," 133-51
- Robinson, David A. and Marilyn G. Hughes. "Snow Cover Variability on the Northern and Central Great Plains," 93-113
- Ross, Lois L. *Harvest of Opportunity: New Horizons for Farm Women*, reviewed, 354-56
- "Rural-Urban Continuum and Environmental Concerns, The," J. Allen Williams, Jr. and Helen A. Moore, 195-212
- Ruttan, Vernon W. book review by, 175-77
- Schoolmaster, F. Andrew. book review by, 171-72
- Sherow, James Earl. *Watering the Valley: Development Along the High Plains Arkansas River, 1870-1950*, reviewed, 180-81
- Shortridge, James R. *The Middle West: Its Meaning in American Culture*, reviewed, 356-57; book review by, 180-81
- Silver, Jim and Jeremy Hull, eds. *The Political Economy of Manitoba*, reviewed, 357-59
- "Snow Cover Variability on the Northern and Central Great Plains," David A. Robinson and Marilyn G. Hughes, 93-113
- Sociology of U.S. Agriculture: An Ecological Perspective, The*, Don E. Albrecht and Steve H. Murdock, reviewed, 172
- Sorenson, L. Orlo. book review by, 174-75
- Steele, Gregory V. See Michael J. Ellis
- Struggle for the Land: Indigenous Insight and Industrial Empire in the Semiarid World, The*, Paul A. Olson, reviewed, 177-78.
- "Sustainability of the Great Plains in an Uncertain Climate," William E. Riebsame, 133-51
- Sustainable Agriculture in Temperate Zones*, Charles A. Francis, Cornelia Butler Flora, and Larry D. King, eds., reviewed, 349-51
- Sutherland, David M. book review by, 353-54
- Thornton, Russell. *The Cherokees: A Population History*, reviewed, 182-83
- Transportation Service to Small Rural Communities: Effects of Deregulation*, John F. Due, Benjamin J. Allen, Mary R. Kihl, and Michael R. Crumm, reviewed 174-75
- van der Valk, Arnold, ed. *Northern Prairie Wetlands*, reviewed, 183-84
- Wallace, Linda L. See Scott L. Collins
- Warren, D. Michael. See Steven M. Gendel
- Watering the Valley: Development along the High Plains Arkansas River, 1870-1950*, James Earl Sherow, reviewed, 180-81
- Watson, Daniel. See Peter Bleed
- Weber, William A. *Colorado Flora: Eastern Slope*, reviewed, 184-85

Wigley, Perry B. *See* Michael J. Ellis

Wild Oat Inflorescence and Seed: Anatomy, Development and Morphology, The, M. V. S. Raju, reviewed, 353-54

Williams, J. Allen, Jr. and Helen A. Moore, "The Rural-Urban Continuum and Environmental Concerns," 195-212

Wilson, Barry K. *Farming the System: How Politicians and Producers Shape Canadian Agricultural Policy*, reviewed, 359-60

Wishart, David J. book review by, 179-80

Yates, Faye. *See* Steven M. Gendel

LANDSCAPE JOURNAL

Founded: 1981

Editors: Robert Riley

. . . explores a variety of topics related to the design, planning, and management of the land. **LJ** is dedicated to the dissemination of academic research, scholarly investigation, and technical information. Topics covered: visual quality assessment, human behavior and the environment, historic and cultural landscape preservation and management, landscape history, planting design, vegetation management and more. 2x per year.

ISSN 0277-2426

RATES

Individuals: \$20/yr.

(must prepay)

Institutions: \$47/yr.

Foreign subscribers add \$8/yr.
for regular postage, \$11/yr. for

Airmail delivery.

REPLY TO

Journal Division

The University of Wisconsin
Press

114 North Murray Street
Madison, Wisconsin 53715
USA

(608) 262-4952

GREAT PLAINS QUARTERLY

Great Plains Quarterly is a scholarly, interdisciplinary journal published by the Center for Great Plains Studies of the University of Nebraska—Lincoln. The *Quarterly* publishes research and criticism that is significant to life and land in the Great Plains region and welcomes the submission of manuscripts. It seeks a readership among all persons interested in the region.



Subscription Rate:

Individual

1 year—\$15.00

2 years—\$28.00

Institutional

1 year—\$20.00

2 years—\$33.00

*Send check or
money order to:*

Great Plains Quarterly
1214 Oldfather Hall
University of Nebraska—Lincoln
Lincoln, Nebraska 68588-0313
(402) 472-6058

CALL FOR PAPERS

**ARCHITECTURE AND THE GREAT PLAINS:
THE BUILT ENVIRONMENT, PAST AND PRESENT**

17th Annual Interdisciplinary Symposium

sponsored by the
Center for Great Plains Studies
University of Nebraska
Lincoln, Nebraska
April 22-24, 1993

Silos and tipis, earthen homes and elevators--these are facets of the built environment of the Great Plains that have created a unique cultural landscape. The Center invites proposals for papers on the general topic of structure and space and the Great Plains. Several broad themes may be explored, such as, an examination of the impact of the physical and cultural context of the Great Plains upon the design and construction of the region's built environment; an investigation of those peculiar features of habitation distinctive to this region; and comparisons of Great Plains built environments with those in other plains settings (e.g. Argentina, Australia, China, or Russia) or built environments created by the same culture in different natural landscapes (e.g. the Old v. New Worlds or the eastern forest of the United States and Canada v. the Great Plains). Interdisciplinary proposals are encouraged.

The Center welcomes submissions representing a broad spectrum of disciplines. Subject areas might include, but are not limited to, Agricultural Engineering, Archeology, Anthropology, Architectural Design, Art and Architectural History, Civil Engineering, Environmental Psychology, Ethnic Studies, Folklore, Geography, Historic Preservation, History, History of Technology, Interior Design, Landscape Architecture, Law (e.g. Zoning), Material Culture Studies, Native American Studies, Sociology, Town and Regional Planning, and Vernacular Architecture Studies.

Interested contributors should submit proposals of 150-200 words and a brief resume by **July 1, 1992**. Persons whose proposals are accepted will be expected to submit final papers by **February 1, 1993**. The *Great Plains Quarterly* and *Great Plains Research* will have rights of first refusal on all papers presented at the conference. The Center for Great Plains Studies will seek funding from various granting agencies to support travel and/or lodging expenses for participants, provided individuals cannot secure funds from their own institutions.

Submit your proposal by **July 1, 1992**, to:

Professor H. Keith Sawyers
Center for Great Plains Studies
1213 Oldfather Hall
University of Nebraska-Lincoln
Lincoln, NE 68588-0314
Phone: 402-472-3082
FAX: 402-472-1123

CALL FOR PAPERS!

GREAT PLAINS RESEARCH
A JOURNAL OF NATURAL AND SOCIAL SCIENCES

Great Plains Research, a biannual multidisciplinary journal, publishes original scholarly papers in the natural and social sciences dealing with issues of regional concern. It includes reports on symposia and conferences and reviews of books addressing topics pertaining to the Great Plains.

We invite submissions of manuscripts from regional scholars. Papers should report original findings, and be written to be both a contribution to the author's discipline and of interest to a multidisciplinary audience. Prospective authors should write to the Editor for information about style and submission procedures. See Instructions to Authors on the inside back cover of this issue.

Publisher:
Center for Great Plains Studies
University of Nebraska

Editor: Paul A. Kay, Geography, University of Nebraska-Lincoln

Associate Editors:

Elizabeth Grobsmith, Anthropology, University of Nebraska-Lincoln

Kathleen Keeler, Biological Sciences, University of Nebraska-Lincoln

David Lewis, Agronomy, University of Nebraska-Lincoln

Lynn White, Sociology, University of Nebraska-Lincoln

Mailing address:

Great Plains Research, 1215 Oldfather Hall, University of Nebraska-Lincoln, Lincoln,
NE 68588-0317

INSTRUCTIONS TO AUTHORS

Great Plains Research publishes original research in the natural and social sciences on topics and issues concerning the Great Plains. Papers represent high levels of scholarship in and contributions to the discipline(s) of the author(s), while being comprehensible to a multidisciplinary community of scholars and lay readers who share interest in the region. Review articles may be published if they represent a programmatic statement of research directions. Authors of unsolicited reviews of symposia, conferences, and books should contact the editor before submitting their manuscripts.

Submissions. All manuscripts should be typed double-spaced on 8.5 inch by 11 inch white bond paper, with at least 1 inch margins all around. The manuscript should be double-spaced throughout, including abstract, quotations, and bibliography. Informational footnotes are not accepted. Authors should submit three copies of their manuscripts to the Editor, *Great Plains Research*, Center for Great Plains Studies, 1215 Oldfather Hall, University of Nebraska, Lincoln, NE 68588-0317. If and when the manuscript is accepted for publication, authors will be asked to submit the manuscript on computer disk (3.5" or 5.25", normal or high density). The text file should be prepared in WordPerfect or ASCII.

Style. *Great Plains Research* utilizes *The Chicago Manual of Style*, 13th edition, as its reference guide. The journal utilizes author-date citations in the text and a complete bibliography that gives author, date, title, source, and page references.

For a journal article:

Dunn, C. 1990. The Manitoba cabinet in the Liberal-Progressive era, 1922-1958. *Prairie Forum* 15:85-102.

For a book:

Blouet, B. W. and F. C. Luebke. 1979. *The Great Plains: Environment and Culture*. Lincoln, NE: University of Nebraska Press.

For an article in a book or conference volume:

Bennett, J. W. 1990. Human adaptations to the North American Great Plains and similar environments. In *The Struggle for the Land*, ed. P. A. Olson, 103-26. Lincoln, NE: University of Nebraska Press.

Abstract. A short abstract, up to 150 words, should precede the main text. The abstract should identify the problem addressed in the paper, indicate the methodology, and summarize the results. Authors should pay particular attention to preparing an abstract that will be interesting to and understood by nonspecialists in the field.

Illustrations. All illustrations must be referenced parenthetically by arabic numbers in the text. For example, not "Figure 1 shows the distribution of rainfall" but "Rainfall increases with elevation (Fig. 1)." Final forms suitable for camera-ready reproduction are the responsibility of the authors, but copies are sufficient for the review process. However, all illustrations should be reduced to the 4.375" (4 3/8") width and made into a legible black and white photo print. Authors should take care that their figures will be legible when reduced in size and reproduced (The text area of the journal's page is 4.375" wide by 7.0" tall). Figure identification marks on the backs of photo prints should be made with red grease pencil only. Captions for each figure should be typed on a separate sheet and not be included in the figure itself.

Tables. Tables should be presented on separate sheets apart from the text. They should be formatted to fit the standard page size or column size of the journal. Tables will be treated as camera-ready illustrations at the time of publication.

Review process. All manuscripts are given double-blind review. Authors therefore should prepare a title page with their name and affiliation, and any acknowledgements, which will not be sent to reviewers. The title of the paper should also appear directly above the abstract. Authors should be careful to avoid self-identification in the text. When two external reviewers with expertise in the topic have submitted their evaluations, the manuscript is reviewed by the associate editors before final decision by the Editor.