

University of Nebraska - Lincoln

DigitalCommons@University of Nebraska - Lincoln

Nebraska Beef Cattle Reports

Animal Science Department

January 2007

Frontmatter and Contents

Follow this and additional works at: <https://digitalcommons.unl.edu/animalscinbcr>

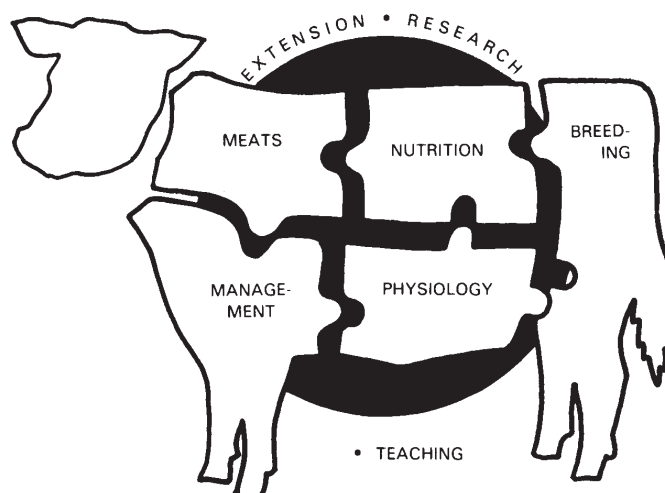


Part of the [Animal Sciences Commons](#)

"Frontmatter and Contents" (2007). *Nebraska Beef Cattle Reports*. 55.

<https://digitalcommons.unl.edu/animalscinbcr/55>

This Article is brought to you for free and open access by the Animal Science Department at DigitalCommons@University of Nebraska - Lincoln. It has been accepted for inclusion in Nebraska Beef Cattle Reports by an authorized administrator of DigitalCommons@University of Nebraska - Lincoln.



Agricultural Research Division
University of Nebraska Extension
Institute of Agriculture and Natural Resources
University of Nebraska–Lincoln

2007 Beef Cattle Report

ACKNOWLEDGMENTS

Appreciation is expressed to the following firms, associations, or agencies who provided grant support for research in the beef cattle program.

Abengoa Bioenergy Corp., York, Neb.
Beef Board, Centennial, Colo.
Bioniche Lifes Services, Belleville, Ontario, Canada
Cargill Corn Milling, Blair, Neb.
CRINA, DSM Nutritional Products, Parsippany, N. J.
Dakota Gold, Sioux Falls, S. Dak.
Elanco Animal Health, Indianapolis, Ind.
Golden Harvest Seeds, Waterloo, Neb.
Intervet, Millsboro, Del.
J.C. Robinson Seed Co., Waterloo, Neb.

Montana State University, Bozeman, Mon.
National Cattlemen's Beef Association, Centennial, Colo.
Nebraska Beef Council, Kearney, Neb.
Nebraska Cattlemen, Inc., Lincoln, Neb.
Nebraska Corn Board, Lincoln, Neb.
Pfizer Inc., New York, N. Y.
Pioneer Hi-Bred International, Inc. Johnston, Iowa
Soypass Royalty Funds, University of Nebraska, Lincoln, Neb.

Appreciation is also expressed to the following firms who provided products or services.

Abengoa Bioenergy Corp., York, Neb.
American Foods Group, Omaha, Neb.
Archer Daniels Midland Company, Columbus, Neb.
Beef Products, Inc., Dakota Dunes, S. Dak.
Boehringer Ingelheim Vetmedica, St. Joseph, Mo.
Cargill Corn Milling, Blair, Neb.
Cargill Meat Solutions, Wichita, Kansas/Schuyler, Neb.
Chief Ethanol fuels, Hastings, Neb.
Dakota Gold, Sioux Falls, S. Dak.
Elanco Animal Health, Indianapolis, Ind.
Fort Dodge Animal Health, Overland Park, Kan.
Freezing Machines, Inc., Dakota Dunes, S. Dak.
Gibbon Packing, Inc., Gibbon, Neb.
Greater Omaha Pack, Omaha, Neb.
Hi Gain Inc., Cozad, Neb.

Intervet, Millsboro, Delaware
Iowa Limestone, Des Moines, Iowa
IVX Animal Health, St. Joseph, Mo.
Lignotech, Rothschild, Wis.
Liquid Feed Commodities, Fremont, Neb.
Maddux Ranch, Wauneta, Neb.a
Mead Cattle Co., Mead, Neb.
Pfizer Animal Health, New York, N. Y.
Pharmacia Upjohn, Kalamazoo, Mich.
PharmAgra Labs, Inc., Brevard, N. Car.
Platte Valley Fuel Ethanol, LLC, Central City, Neb.
Premium Protein Products, Hastings, Neb.
Schering Plough Animal Health, Kenilworth, N. J.
Skylark Meats, Omaha, Neb.
USDA Meat Grading and Certification Branch, Omaha, Neb.

Appreciation is also expressed to the following Research Technicians, Unit Managers, and Crew involved in the Research Programs at our various locations.

Agricultural Research & Development Center, Ithaca

Jeff Bergman	Karl Moline
Logan Dana	Mark Nelson
Tom Dreiling	Chuck Rezac
Matt Greenquist	Ken Rezac
Terryn Hart	Mark Schroeder
Rodney Lamb	Matt Sullivan
Walker Luedtke	Darren Vinton
Allison Miller	Doug Watson

Gudmundsen Sandhills Laboratory, Whitman

Andy Applegarth	John Nollette
C. R. Jewell	Troy Smith
Jackie Musgrave	

West Central Research & Extension Center, North Platte

Rex Davis	Jim Teichert
T. L. Meyer	

Dalbey Halleck Farm

Mark Dragastin

Animal Science Department, Lincoln

Josh Benton	Jim MacDonald
Deb Clopton	Clyde Naber
Ruth Diedrichsen	Robert Peterson
Jeryl Hauptman	Calvin Schrock
Janet Hyde	Cindy Stuefer-Powell
Tommi Jones	Kyle Vander Pol
Matt Luebbe	

Panhandle Research & Extension Center, Scottsbluff

Nabor Guzman	Doug Pieper
Paul McMillen	

Northeast Research & Extension Center, Norfolk

Sheryl Colgan	Kevin Heithold
Bob Frerichs	Lee Johnson

Electronic copies of *Nebraska Beef Reports and Summaries* available at:
<http://beef.unl.edu> click on reports.

The 2007 Nebraska Beef Report Dedicated in Memory of Dr. Paul Q. Guyer, Professor Emeritus of Animal Science

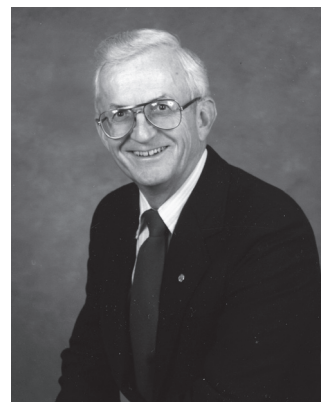


Paul's contributions as a leader, an innovator, an organizer, a resource person and an educator were very significant in the development of Nebraska's beef cattle industry and that of surrounding states.

As the first beef specialist on the University of Nebraska faculty, he led and worked in all areas of beef extension, including performance testing, beef nutrition, feedlot nutrition and management, and cow-calf production. His unique blend of communicative ability, scientific excellence and practical know-how

produced an outstanding extension education program for Nebraska cattlemen.

Paul will be remembered for his dedicated career to beef cattle extension education for producers, feeders, and youth. He also served as a mentor to many young faculty and gave much of himself to others through his dedication, professional honesty, and personal sincerity. It is with highest esteem for his contributions that this report is dedicated to Paul Q. Guyer.



Dr. Jim Gosey Retires

After 34 years as extension beef specialist at the University of Nebraska, Dr. Jim Gosey retired at the end of 2005. Over those 34 years of service, Jim's principal responsibilities have been providing leadership and programming in beef cattle genetics and management, and teaching Beef Cow-Calf Management and Beef Cattle Merchandising to undergraduate students. Over the years, Jim's style and approach have continued to evolve, offering ever-changing educational programs to meet the needs of the cattle producers of Nebraska and the nation and to meet the needs of undergraduates preparing themselves for a dynamic world. Whether talking to beef producers or students, Jim strives to simplify often complex concepts into practical, applied recommendations.

Jim has been a featured speaker at four Beef Improvement Federation (BIF) national meetings, nine Range Beef Cow Symposia (combined efforts of Nebraska, Colorado, South Dakota and Wyoming), four Four-State Beef Conferences (Nebraska, Iowa, Kansas and Missouri) and numerous Beef Breed Association Programs, including the 2005 National Angus Conference. He has received numerous recognitions, including: Distinguished Service (Beef Improvement Federation), Livestock Service (Walnut Grove Co.), Excellence in Programming (Nebraska Cooperative Extension), Hall of Merit (American Polled Hereford Association), and Holling Family Award for Teaching Excellence (UNL Institute of Agriculture and Natural Resources).



Table of Contents

Cow/Calf

Utilization of Dried Distillers Grains for Developing Beef Heifers.....	5
Progesterone Concentrations Alter Follicle Characteristics and May Affect Quality of Oocytes (Eggs).....	7

Growing

Summary Analysis of Grazing Yearling Response to Distillers Grains.....	10
Dried Distillers Grains Substitute for Forage and Nitrogen on Pasture: N Dynamics and Use Efficiency.....	12
Comparing a Modified Dry Byproduct to Dry Distillers Grains with Solubles in Growing Calf Diets.....	15
Effect of Distillers Grains Composition and Level on Steers Consuming High-Quality Forage.....	17
Replacement of Forage with Dried Distillers Grains Reduces Ruminal Methane Production.....	19
Dried Distillers Grains as Creep Feed for Yearling Beef Cattle Grazing Sandhill Range	22

Beef Feedlot

Effect of Feeding a By-product Combination at Two Levels or By-product Alone in Feedlot Diets.....	25
Effects of Different Inclusion Levels of Wet Distiller Grains in Feedlot Diets Containing Wet Corn Gluten Feed.....	27
Effects of Roughage Source and Level with the Inclusion of Wet Distillers Grains on Finishing Cattle Performance and Economics	29
Effect of Corn Processing and Wet Distillers Grains Inclusion Level in Finishing Diets.....	33
Optimum Levels of Dry Distillers Grains with Solubles for Finishing Beef Steers.....	36
Digestibility, Rumen Metabolism, and Site of Digestion for Finishing Diets Containing Wet Distillers Grains or Corn Oil	39
Pen Density and Straw Bedding During Feedlot Finishing	43
Environmental Factors Affecting Water Intake in Steers Finishing in Feedlots	47
Feedlot Surface Conditions and Ammonia Emissions	50
Effect of Phase Feeding Protein on Cattle Performance and Nitrogen Mass Balance in Open Feedlots	52
Changes in Gain Through the Feeding Period.....	55
Comparison of a Long Yearling System and Calf-fed Performance and Economics	58
Effect of Sorting and Feeding Optaflexx on Performance and Economics of Long Yearling Steers.....	61
Performance Profile and Carcass Characteristics of Steers Fed Optaflexx.....	65
Evaluation of Excede® Given at Either Initial Processing or Revaccination on Bovine Respiratory Disease and Pasture vs. Feedlot Receiving Systems	68
Evaluation of Synovex Choice Versus Revalor Implant Strategies in Beef Finishing Steers.....	71
Effect of CRINA RUMINANTS AF, a Mixture of Essential Oil Compounds, on Finishing Beef Steer Performance	73
Effect of CRINA RUMINANTS AF, a Mixture of Essential Oil Compounds, on Ruminal Fermentation and Digestibility	75
Feeding Potassium Bicarbonate and Sodium Chloride in Finishing Diets.....	77
Effect of Feeding DAS-59122-7 Corn Grain and Non-transgenic Corn Grain to Finishing Feedlot Steers.....	80

Beef Products

Identification of Off-Flavor Compounds in Beef Round and Chuck Muscles.....	82
Fatty Acids and Minerals Affect the Liver-Like Off-Flavor in Cooked Beef.....	84
Off-Flavor Mitigation in Cow Steaks	86
Masking Off-Flavors in Ground Beef.....	89
Enhancement of Beef Chuck and Round Muscles with Ammonium Hydroxide	91
Effects of Aging on Beef Chuck and Round Muscles Enhanced with Ammonium Hydroxide and Salt	92
Ranking Beef Muscles for Warner-Bratzler Shear Force and Trained Sensory Panel Ratings	94

New Technology

Hyperspectral Imaging: A Non-Invasive Technique to Predict Beef Tenderness.....	97
Evaluating Use of Urinary Purine Derivative to Creatinine Ratio as an Estimate of Microbial Protein Production in Steers.....	100
Diurnal and Dietary Impacts on Purine Derivative Excretion from Spot Samples of Urine.....	103
Chronic Exposure of Ruminal Fluid Cultures to Treatments That Inhibit Methanogenesis.....	106
Comparison of <i>In Vivo</i> Digestibility to <i>In Vitro</i> Digestibility of Five Forages Fed to Steers	109
Using a Modified <i>In Vitro</i> Procedure to Measure Corn Bran Buoyancy.....	112
Vascular Endothelial Growth Factor Inhibitory Isoform Is Regulated Prior to Ovulation	114
Inhibition of Vascular Endothelial Growth Factor Manipulates Follicles in Beef Females	116

Statistics Used in the Nebraska Beef Report and Their Purpose	118
---	-----