

University of Nebraska - Lincoln

## DigitalCommons@University of Nebraska - Lincoln

---

Publications from USDA-ARS / UNL Faculty

U.S. Department of Agriculture: Agricultural  
Research Service, Lincoln, Nebraska

4-9-2007

### Molecular serotyping of *Escherichia coli* O111:H8

Lisa M. Durso

USDA, ARS, U.S. Meat Animal Research Center, Lisa.Durso@ars.usda.gov

James L. Bono

USDA, ARS, U.S. Meat Animal Research Center, jim.bono@ars.usda.gov

James E. Keen

USDA, ARS, U.S. Meat Animal Research Center, jkeen3@unl.edu

Follow this and additional works at: <https://digitalcommons.unl.edu/usdaarsfacpub>



Part of the [Agricultural Science Commons](#)

---

Durso, Lisa M.; Bono, James L.; and Keen, James E., "Molecular serotyping of *Escherichia coli* O111:H8" (2007). *Publications from USDA-ARS / UNL Faculty*. 148.  
<https://digitalcommons.unl.edu/usdaarsfacpub/148>

This Article is brought to you for free and open access by the U.S. Department of Agriculture: Agricultural Research Service, Lincoln, Nebraska at DigitalCommons@University of Nebraska - Lincoln. It has been accepted for inclusion in Publications from USDA-ARS / UNL Faculty by an authorized administrator of DigitalCommons@University of Nebraska - Lincoln.

## Note

Molecular serotyping of *Escherichia coli* O111:H8Lisa M. Durso<sup>\*</sup>, James L. Bono, James E. Keen

USDA, ARS, U.S. Meat Animal Research Center, P.O. Box 166, State Spur 18D, Clay Center, Nebraska 68933, United States

Received 23 October 2006; received in revised form 19 January 2007; accepted 30 January 2007

Available online 7 February 2007

---

**Abstract**

Accurate *Escherichia coli* serotyping is critical for pathogen diagnosis and surveillance of non-O157 Shiga-toxigenic strains, however few laboratories have this capacity. The molecular serotyping protocol described in this paper targets the somatic and flagellar antigens of *E. coli* O111:H8 used in traditional serotyping, and can be performed routinely in the laboratory.

© 2007 Published by Elsevier B.V.

**Keywords:** *E. coli*; *E. coli* O111:H8; O111:H8; Serotyping; Molecular serotyping

---

Serotyping has long served to help distinguish between different *Escherichia coli*. Of the 181 numbered *E. coli* O antigens, only a small subset is associated with disease in humans. *E. coli* with the O111 serotype causes both enteropathogenic and enterohemorrhagic diseases in humans (Nataro and Kaper, 1998). Enteropathogenic *E. coli* (EPEC) O111 is a classic cause of diarrhea in children, especially in the developing world. Enterohemorrhagic *E. coli* (EHEC) O111, which typically carries at least one Shiga-toxin gene, is one of the most common non-O157 causes of bloody diarrhea and hemolytic-uremic syndrome (HUS) in the United States (Brooks et al., 2005), and also causes disease in Europe (Karch et al., 1999), Asia (Jeon et al., 2006; Kato et al., 2005), and Australia (Paton et al., 1996). Numerous outbreaks have been attributed to this pathogen (Bettelheim and Goldwater, 2004; Brooks et al., 2004; Jeon et al., 2006; Kato et al., 2005). There are a limited number of H antigens associated with both EPEC and EHEC O111, including H8 and H- (Bettelheim, 2003). The O111:H8 serotype has been implicated as a cause of enterohemorrhagic diarrhea and was shown to be the source of the only reported EHEC O111 outbreak in the United States which occurred at a Texas cheerleading camp (Benenson, 1995; Brooks et al., 2005). *E. coli* O111:H8 can also be isolated from livestock, including cattle (Jeon et al., 2006), and the

epidemiology of this serotype in cattle and the cattle production environment remains unclear.

In conventional serotyping, an anti-*E. coli* polyclonal antiserum is used to agglutinate somatic and flagellar antigens. However, the resources needed to reliably perform *E. coli* O- and H- antigen serotyping are only available in a limited number of reference laboratories (Bettelheim, 2003). Some PCR-based methods indirectly identify *E. coli* O111 via virulence genes or intimin subtypes (Blanco et al., 2004; Jenkins et al., 2003; Sharma, 2002). While these methods appear to work well, the PCR targets can only serve as markers for serotype, since the actual genes involved in antigen expression are not assayed. However, PCR methods targeting *E. coli* O- or H- antigen genes directly could substitute for serotyping (DebRoy et al., 2004; Durso et al., 2005; Prager et al., 2003), and PCR primer sets targeting the *E. coli* O111 and the H8 antigens have been developed (Paton and Paton, 1998; Wang et al., 2003). We have combined these primers in a single molecular serotyping assay, and validated the multiplexed assay with both EPEC and EHEC strains.

Primers for *E. coli* O111:H8 molecular serotyping were: O111 F (AGA GAA ATT ATC AAG TTA GTT CC) and O111 R (ATA GTT ATG AAC ATC TTG TTT AGC), which are specific for the *wbdl* portions of the *rfb*<sub>O111</sub> (O-antigen-encoding) gene cluster (Paton and Paton, 1998) and H8F (AGT GAC CTG ATT TCT AAA) and H8R (TTC AAT GGA GCC TTT GTC), which code for the *fliC*<sub>H8</sub> flagellar protein (Wang et al., 2003). Cells were prepared by diluting overnight Trypticase Soy Broth

---

<sup>\*</sup> Corresponding author. Tel.: +1 402 762 4359; fax: +1 402 762 4375.

E-mail address: [lisa.durso@ars.usda.gov](mailto:lisa.durso@ars.usda.gov) (L.M. Durso).

cultures 1:10 with reagent grade water. The 30  $\mu$ l PCR reaction recipe was determined empirically, and the optimized reaction conditions used 120  $\mu$ M of each nucleotide, 500 nM of each primer, 4.5 mM  $MgCl_2$ , 1  $\mu$ l of template (diluted overnight culture) and 0.5 unit HotStarTaq (Qiagen, Valencia, CA). Thermocycler conditions were determined through a series of temperature gradient experiments. Final thermocycler conditions were: 95 °C for 15 min, 35 cycles of 94 °C for 60 s, 53 °C for 60 s, and 72 °C for 60 s, and a final elongation of 72 °C for 10 min. Amplicons were visualized by electrophoresis on a 2% agarose gel, stained with ethidium bromide, and digitally photographed. The O111 amplicon was 406 bp and the H8 amplicon was 238 bp (Fig. 1). In order to validate that the PCR amplicons were *rfb*<sub>O111</sub> and *fliC*<sub>H8</sub>, all positive PCR bands were sequenced. Amplicons were treated with exonuclease (USB) and precipitated using ethanol (Smith et al. 2000). The pellet was suspended in 1 $\times$  DYEnamic ET termination cycle sequencing reagent (Amersham Bioscience, Pittsburgh, PA) and subjected to 25 cycles of 96 °C for 30 seconds, 50 °C for 1 minute, and 60 °C for 4 minutes, using the amplification primers to sequence. Following a second ethanol precipitation, the pellet was suspended in formamide (PE Biosystems, Foster City, CA) and sequenced using an ABI 3730xl DNA analyzer (PE Biosystems). The sequencing reads were queried against the BLAST nr database (NCBI), which confirmed the amplicon's sequence as being either *E. coli wbdI*<sub>O111</sub> or *fliC*<sub>H8</sub>.

Molecular serotyping assay sensitivity and specificity estimates were determined using a panel of 259 diverse *E. coli* of known O and/or H serotype (including 54 *E. coli* serotyped as O111 and 31 serotyped as H8) of human, animal, and insect origins, and 23 non-*E. coli*. Sensitivity is the proportion (range 0.0–1.0) of true positives (as measured by the gold standard, in this case traditional serotyping) classified as positive by the test (molecular serotyping assay). High sensitivity estimates indicate a low number of false negative results. Diagnostic specificity is the proportion of true negatives

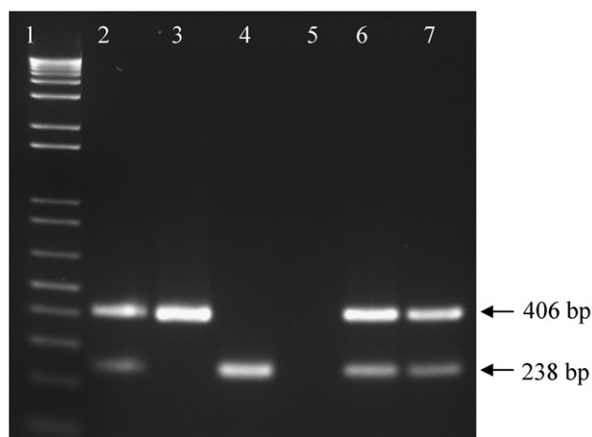


Fig. 1. Molecular serotyping of *E. coli* O111:H8 by multiplex PCR. Lane 1, molecular marker (100 bp); lane 2, Dec 8B (O111:H8 by conventional serotyping); lane 3, Dec 12B (O111:H2 by conventional serotyping); lane 4, Dec 10G (O128:H8 by conventional serotyping); lane 5, Bi 7458-41 (O6:H1 by conventional serotyping); lane 6, BE 00749 (O111:HNM by conventional serotyping); and lane 7, TWO4579 (O111:H– by conventional serotyping).

Table 1

Sensitivity and specificity estimates of *E. coli* O111 and H8 molecular serotyping<sup>a</sup> compared to conventional serotyping for 253 bacteria (231 *E. coli* and 22 non-*E. coli*)

Measure	Strains used	Estimate	95% CI
O111 specificity ( <i>n</i> =228)	205 non-O111 <i>E. coli</i> <sup>b</sup> 23 non- <i>E. coli</i> <sup>c</sup>	1.00	0.99–1.00
O111 sensitivity ( <i>n</i> =54)	54 <i>E. coli</i> O111 <sup>d</sup>	0.98	0.90–0.99
H8 specificity ( <i>n</i> =147)	124 non-H8 <i>E. coli</i> <sup>e</sup> 23 non- <i>E. coli</i> <sup>c</sup>	1.00	0.97–1.00
H8 sensitivity ( <i>n</i> =32)	32 <i>E. coli</i> H8 <sup>f</sup>	0.96	0.84–0.99

<sup>a</sup> Data compiled from multiplex PCR reactions.

<sup>b</sup> Non-O111 *E. coli* includes 205 isolates of 173 different O serotypes.

<sup>c</sup> Non-*E. coli* includes 23 isolates of 17 closely related genera.

<sup>d</sup> Includes 54 *E. coli* O111 isolates of 9 different H serotypes, and excludes all strains for which H serotype data was missing, all strains that did not react with any of the standard H antisera, and all non-motile strains.

<sup>e</sup> Non-H8 *E. coli* includes 124 isolates of 39 different H serotypes, and excludes all strains for which H serotype data was missing, all strains that did not react with any of the standard H antisera, and all non-motile strains.

<sup>f</sup> Includes 32 isolates of 31 different O serotypes.

(as measured by traditional serotyping) classified as negative by the test (molecular serotyping assay). High specificity estimates indicate a low number of false positive results. The O111 and H8 components of assay performance were measured separately. The proportion of *E. coli* O111:NM/H– strains that possess the *fliC*<sub>H8</sub> gene without expressing the H8 antigen was estimated based on data collected from seven *E. coli* O111:H– (H antigen does not match any of the standard sera), and 17 O111:HNM (NM = non-motile, H antigen not expressed) strains.

Compared to conventional serotyping, results (Table 1 and supplementary data at <http://www.ars.usda.gov/SP2UserFiles/person/35149/Supplements/DursoJMMSuppDataJan222007.pdf>) indicate that the *E. coli* O111:H8 molecular serotyping assay was 100% specific for both the O111 and H8 antigens (no false positives) and had a sensitivity of 0.98 for the O111 antigen (95% CI 0.90–0.99) and 0.96 for the H8 antigen (95% CI 0.83–0.99). Sequencing of the O111 and H8 positive PCR bands confirmed them to be *rfb*<sub>O111</sub> and *fliC*<sub>H8</sub>, respectively, in all cases. There was a single EPEC O111:HNM strain (strain 5720 B170 received in 1996 from the Centers for Disease Control and Prevention) that was positive by conventional serotyping, but negative in the molecular serotyping (false negative). The only false negative H8 isolate was an O102:H8 strain that is used by the CDC as an O102 reference strain. The H8 conventional serotype was confirmed in our laboratory using reference sera obtained from the Statens Serum Institut (Copenhagen, Denmark). It is possible that these false negatives result from sequence diversity under the primer sites. There were 11 of 17 (65%) *E. coli* O111:NM and four of eight (50%) *E. coli* O111:H– that gave a positive band for the H8 gene *fliC*<sub>H8</sub> with molecular serotyping.

Like conventional serotyping, this assay is designed and optimized for use with pure bacterial cultures, and it is not appropriate for primary isolation or detection of *E. coli* O111 or *E. coli* H8 from complex sample matrices. Unlike conventional

serotyping, which is based on phenotypic information about antigen expression, molecular serotyping generates information on the presence or absence of the gene that codes for the antigen. For this reason, molecular serotyping may not be appropriate for all bacteriologic investigations, especially when phenotypic expression data is needed. However, molecular serotyping does permit serotyping of “antigenically silent” strains that cannot be typed using conventional methods, such as the H- and non-motile H8 strains examined in these experiments.

In conclusion, the *E. coli* O111:H8 molecular serotyping assay targets the same *E. coli* O111 and H8 somatic and flagellar antigens used in conventional serotyping and is both sensitive and specific compared to conventional serotyping methods. Although traditional *E. coli* O:H serotyping will remain the gold standard for *E. coli* O111:H8 diagnosis, the molecular serotyping assay described here has some relative advantages including the ability to serotype isolates that are untypable by conventional methods. In addition, the *E. coli* O111:H8 molecular serotyping assay described here should allow laboratories to reliably and cost-effectively generate *E. coli* O111 and H8 serotype data using routine PCR techniques and readily available laboratory equipment.

## Acknowledgements

This work was supported, in part, by USDA CSREES NRI grant #2002-2239 (awarded to JEK) and the USDA-ARS. We thank Ron Mlejnek, Sandy Fryda-Bradley, Liz Ossian, Randy Bradley, Steve Simcox, and Bob Lee for technical assistance, and Joan Rosch for secretarial assistance. Thanks to the Centers for Disease Control and Prevention, Foodborne and Diarrheal Disease Branch for supplying the O antigen standard strains.

Names are necessary to report factually on available data; however, the USDA neither guarantees nor warrants the standard of the product, and the use of the name by USDA implies no approval of the product to the exclusion of others that may also be suitable.

## References

- Benenson, A.S. (Ed.), 1995. Control of Communicable Diseases Manual 1995, 16th ed. American Public Health Association, Washington, D.C.
- Bettelheim, K.A., 2003. Non-O157 verotoxin-producing *Escherichia coli*: a problem, paradox, and paradigm. *Exp. Biol. Med.* 228, 333–344.
- Bettelheim, K.A., Goldwater, P.N., 2004. Outbreak of Shiga toxin-producing *Escherichia coli* O111:H8 infection. *Clin. Infect. Dis.* 39, 148–149.
- Blanco, M., Padola, N.L., Krüger, A., Sanz, M.E., Blanco, J.E., González, E.A., Dahbi, G., Mora, A., Bernárdez, M.I., Etcheverría, A.I., Arroyo, G.H., Lucchesi, P.M., Parma, A.E.A., Blanco, J., 2004. Virulence genes and intimin types of Shiga-toxin-producing *Escherichia coli* isolated from cattle and beef products in Argentina. *Int. Microbiol.* 7, 269–276.
- Brooks, J.T., Bergmire-Sweat, D., Kennedy, M., Hendricks, K., Garcia, M., Marengo, L., Wells, J., Ying, M., Bibb, W., Griffin, P.M., Hoekstra, R.M., Friedman, C.R., 2004. Outbreak of Shiga toxin-producing *Escherichia coli* O111:H8 infections among attendees of a high school cheerleading camp. *Clin. Infect. Dis.* 38, 190–198.
- Brooks, J.T., Sowers, E.G., Wells, J.G., Greene, K.D., Griffin, P.M., Hoekstra, R.M., Strockbine, N.A., 2005. Non-O157 Shiga-toxin-producing *Escherichia coli* infection in the United States, 1983–2002. *J. Infect. Dis.* 192, 1422–1429.
- DebRoy, C., Roberts, E., Kundrat, J., Davis, M.A., Briggs, C.E., Fratamico, P.M., 2004. Detection of *Escherichia coli* serogroups O26 and O113 by PCR amplification of the *wzx* and *wzy* genes. *Appl. Environ. Microbiol.* 70, 1830–1832.
- Durso, L.M., Bono, J.L., Keen, J.E., 2005. Molecular serotyping of *Escherichia coli* O26:H11. *Appl. Environ. Microbiol.* 71, 4941–4944.
- Jenkins, C., Willshaw, G.A., Evans, J., Cheasty, T., Chart, H., Shaw, D.J., Dougan, G., Frankel, G., Smith, H.R., 2003. Subtyping of virulence genes in verocytotoxin-producing *Escherichia coli* (VTEC) other than serogroup O157 associated with disease in the United Kingdom. *J. Med. Microbiol.* 52, 941–947.
- Jeon, B.W., Jeong, J.M., Won, G.Y., Park, H., Eo, S.K., Kang, H.Y., Hur, J., Hwa Lee, J., 2006. Prevalence and characteristics of *Escherichia coli* O26 and O111 from cattle in Korea. *Int. J. Food Microbiol.* 110, 123–126.
- Karch, H., Bielaszewska, M., Bitzan, M., Schmidt, H., 1999. Epidemiology and diagnosis of Shiga toxin-producing *Escherichia coli* infections. *Diagn. Microbiol. Infect. Dis.* 34, 229–243.
- Kato, K., Shimoura, R., Nashimura, K., Yoshifuji, K., Shiroshita, K., Sakurai, N., Kodama, H., Kuramoto, S., 2005. Outbreak of enterohemorrhagic *Escherichia coli* O111 among high school participants in excursion to Korea. *Jpn. J. Infect. Dis.* 58, 332–333.
- Nataro, J.P., Kaper, J.B., 1998. Diarrheagenic *Escherichia coli*. *Clin. Microbiol. Rev.* 11, 142–201.
- Paton, A.W., Paton, J.C., 1998. Detection and characterization of Shiga toxigenic *Escherichia coli* by using multiplex PCR assays for *stx*<sub>1</sub>, *stx*<sub>2</sub>, *eaeA*, enterohemorrhagic *E. coli* *hlyA*, *rfb*<sub>O111</sub>, and *rfb*<sub>O157</sub>. *J. Clin. Microbiol.* 36, 598–602.
- Paton, A.W., Ratcliff, R.M., Doyle, R.M., Seymour-Murray, J., Davos, D., Lanser, J.A., Paton, J.C., 1996. Molecular microbiological investigation of an outbreak of hemolytic-uremic syndrome caused by dry fermented sausage contaminated with Shiga-like toxin-producing *Escherichia coli*. *J. Clin. Microbiol.* 34, 1622–1627.
- Prager, R., Strutz, U., Fruth, A., Tschäpe, H., 2003. Subtyping of pathogenic *Escherichia coli* strains using flagellar (H)-antigens: serotyping versus *fliC* polymorphisms. *Int. J. Med. Microbiol.* 292, 477–486.
- Sharma, V.K., 2002. Detection and quantitation of enterohemorrhagic *Escherichia coli* O157, O111, and O26 in beef and bovine feces by real-time polymerase chain reaction. *J. Food Prot.* 65, 1371–1380.
- Smith, T.P.L., Godtel, R.A., Lee, R.T., 2000. PCR-based setup for high-throughput cDNA library sequencing on the ABI 3700 automated DNA sequencer. *BioTechniques* 29, 698–700.
- Wang, L., Rothmund, D., Curd, H., Reeves, P.R., 2003. Species-wide variation in the *Escherichia coli* flagellin (H-antigen) gene. *J. Bacteriol.* 185, 2936–2943.