

University of Nebraska - Lincoln

DigitalCommons@University of Nebraska - Lincoln

Nebraska Tractor Tests

Tractor Test and Power Museum, The Lester F. Larsen

January 1999

Nebraska Summary 302: Massey Ferguson 6265 Diesel 32-Speed

Nebraska Tractor Test Lab

University of Nebraska-Lincoln, tractortestlab@unl.edu

Follow this and additional works at: <https://digitalcommons.unl.edu/tractormuseumlit>



Part of the [Energy Systems Commons](#), [History of Science, Technology, and Medicine Commons](#), [Other Mechanical Engineering Commons](#), [Physical Sciences and Mathematics Commons](#), [Science and Mathematics Education Commons](#), and the [United States History Commons](#)

Nebraska Tractor Test Lab, "Nebraska Summary 302: Massey Ferguson 6265 Diesel 32-Speed" (1999). *Nebraska Tractor Tests*. 2219.

<https://digitalcommons.unl.edu/tractormuseumlit/2219>

This Article is brought to you for free and open access by the Tractor Test and Power Museum, The Lester F. Larsen at DigitalCommons@University of Nebraska - Lincoln. It has been accepted for inclusion in Nebraska Tractor Tests by an authorized administrator of DigitalCommons@University of Nebraska - Lincoln.

SUMMARY OF OECD TESTS 1856 & 1857-NEBRASKA SUMMARY 302

MASSEY FERGUSON 6265 DIESEL

32 SPEED

POWER TAKE-OFF PERFORMANCE

Power HP (kW)	Crank shaft speed rpm	Gal/hr (l/h)	lb/hp.hr (kg/kW.h)	Hp.hr/gal (kW.h/l)	Mean Atmospheric Conditions
MAXIMUM POWER AND FUEL CONSUMPTION					
		Rated Engine Speed (PTO speed 1102rpm)			
95.6 (71.3)	2204	6.05 (22.89)	0.449 (0.273)	15.81 (3.11)	
		Standard Power Take-off Speed(999rpm)			
94.5 (70.5)	1998	5.60 (21.21)	0.421 (0.256)	16.87 (3.32)	

VARYING POWER AND FUEL CONSUMPTION

95.6 (71.3)	2204	6.05 (22.89)	0.449 (0.273)	15.81 (3.11)	Air temperature
82.1 (61.2)	2236	5.49 (20.80)	0.475 (0.289)	14.94 (2.94)	73°F (23°C)
62.5 (46.6)	2263	4.75 (17.97)	0.540 (0.328)	13.16 (2.59)	Relative humidity
43.0 (32.1)	2282	3.99 (15.12)	0.659 (0.401)	10.78 (2.12)	44%
20.9 (15.6)	2298	3.13 (11.84)	1.063 (0.647)	6.68 (1.32)	Barometer
--	2322	1.87 (7.09)	--	--	29.6" Hg (100.3 kPa)
--			--	--	

Maximum Torque - 290.9 lb.-ft. (394.4 Nm) at 1379 rpm

Maximum Torque Rise - 27.7%

Torque rise at 1760 engine rpm - 18%

DRAWBAR PERFORMANCE

(Unballasted - Front Drive Engaged)

FUEL CONSUMPTION CHARACTERISTICS

Power Hp (kW)	Drawbar pull lbs (kN)	Speed mph (km/h)	Crank- shaft speed rpm	Slip %	Fuel Consumption lb/hp.hr (kg/kW.h)	Hp.hr/gal (kW.h/l)	Temp.°F (°C) cool- ing med	Air dry bulb	Barom. inch Hg (kPa)
					Maximum Power 15th(1LA)Gear				
85.4 (63.7)	7105 (31.6)	4.51 (7.26)	2073	6	0.483 (0.294)	14.67 (2.89)	190 (88)	79 (26)	29.8 (101.0)
					75% of Pull at Maximum Power 15th(1LA)Gear				
55.5 (41.3)	4195 (18.7)	4.96 (7.98)	2230	4	0.614 (0.374)	11.57 (2.28)	190 (88)	74 (23)	29.8 (101.0)
					50% of Pull at Maximum Power 15th(1LA)Gear				
37.8 (28.2)	2810 (12.5)	5.05 (8.13)	2249	3	0.777 (0.473)	9.14 (1.80)	190 (88)	74 (23)	29.8 (101.0)
					75% of Pull at Reduced Engine Speed 17th(1LB)Gear				
55.9 (41.7)	4225 (18.8)	4.96 (7.99)	1911	4	0.532 (0.324)	13.35 (2.63)	189 (87)	74 (23)	29.8 (101.0)
					50% of Pull at Reduced Engine Speed 17th(1LB)Gear				
37.8 (28.2)	2810 (12.5)	5.05 (8.12)	1922	3	0.639 (0.388)	11.12 (2.19)	189 (87)	74 (23)	29.8 (101.0)

Location of Test: Groupement d'Antony, Parc de Touvoie, BP 44 Antony, France 92163

Dates of Test: January -July, 1999

Manufacturer: AGCO S.A. Z.A.-No.2 BP 60307, Avenue Blaise Pascal, 60026 Beauvais, France

FUEL and OIL: Fuel No. 2 Diesel **Specific gravity converted to 60°/60° F (15°/15°C)** 0.853
Fuel weight 7.10 lbs/gal (0.851 kg/l) **Oil SAE** 10W30 **API service classification** CD/CE
Transmission and hydraulic lubricant BP Terrac Extra 10W/30 **Front axle lubricant** API GL5 - SAE 85W140

ENGINE: Make Perkins Diesel **Type** four cylinder vertical with turbocharger and inter-cooler **Serial No.** U826996C **Crankshaft** lengthwise
Rated engine speed 2200 **Bore and stroke** 3.937" x 5.00"(100.0 mm x 127.0 mm) **Compression ratio** 17.3 to 1 **Displacement** 243 cu in (3990 ml)
Starting system 12 volt **Lubrication** pressure **Air cleaner** two paper elements **Oil filter** one full flow cartridge **Oil cooler** engine coolant heat exchanger for crankcase oil, radiator for hydraulic and transmission oil **Fuel filter** one paper element **Muffler** underhood **Exhaust** vertical **Cooling medium temperature control** thermostat and variable speed fan

CHASSIS: Type 2WD and FWA **Serial No.** F308012 **Tread width** rear 60.6" (1538 mm) to 84.1" (2136 mm) front 2WD - 54.3"(1380 mm) to 91.7" (2330 mm), FWA - 61.7" (1566 mm) to 80.9" (2054 mm) **Wheelbase** 100.5" (2553 mm) **Hydraulic control system** direct engine drive **Transmission** selective gear fixed ratio with partial (4) range operator controlled powershift **Nominal travel speeds mph (km/h)** first 1.30 (2.09) second 1.52 (2.45) third 1.80 (2.90) fourth 2.11 (3.39) fifth 2.22 (3.57) sixth 2.59 (4.17) seventh 2.91 (4.69) eighth 3.06 (4.92) ninth 3.41 (5.49) tenth 3.59 (5.77) eleventh 3.94 (6.34) twelfth 4.03 (6.48) thirteenth 4.62 (7.43) fourteenth 4.71 (7.58) fifteenth 4.88 (7.86) sixteenth 5.45 (8.77) seventeenth 5.72 (9.20) eighteenth 6.38 (10.26) nineteenth 6.74 (10.86) twentieth 7.90 (12.71) twenty-first 8.30 (13.36) twenty-second 9.72 (15.64) twenty-third 10.92 (17.58) twenty-fourth 11.45 (18.45) twenty-fifth 12.79 (20.58) twenty-sixth 13.42 (21.60) twenty-seventh 14.78 (23.79) twenty-eighth 15.09 (24.29) twenty-ninth 17.30 (27.84) thirtieth 17.67 (28.43) thirty-first 20.42 (32.86) thirty-second 23.90 (38.46) reverse 1.22 (1.97), 1.44 (2.31), 1.69 (2.72), 1.98 (3.19), 2.08 (3.35), 2.44 (3.93), 2.74 (4.41), 2.88 (4.63), 3.21 (5.17), 3.37 (5.43), 3.71 (5.97), 3.79 (6.10), 4.34 (6.99), 4.44 (7.14), 4.60 (7.40), 4.97 (8.25), 5.13 (8.65), 6.00 (9.65), 6.34 (10.21), 7.43 (11.95), 7.80 (12.56), 9.13 (14.70), 10.27 (16.53),

DRAWBAR PERFORMANCE

(Unballasted - Front Drive Engaged) MAXIMUM POWER IN SELECTED GEARS

Power Hp (kW)	Drawbar pull lbs (kN)	Speed mph (km/h)	Crank- shaft speed rpm	Slip %	Fuel Consumption lb/hp.hr (kg/kW.h)	Consumption Hp.hr/gal (kW.h/l)	Temp.°F(°C) cool- ing med	Air dry bulb	Barom. inch Hg (kPa)
64.6 (48.2)	10515 (46.8)	2.31 (3.71)	2205	15	6th(2TB)Gear 0.601 (0.366)	11.82 (2.33)	192 (89)	79 (26)	29.8 (101.0)
72.4 (54.0)	10455 (46.5)	2.60 (4.18)	2190	14	7th(3TA)Gear 0.575 (0.350)	12.33 (2.43)	190 (88)	79 (26)	29.8 (101.0)
76.3 (56.9)	10165 (45.2)	2.81 (4.53)	2187	11	8th(2TC)Gear 0.552 (0.336)	12.88 (2.54)	190 (88)	79 (26)	29.8 (101.0)
81.1 (60.5)	9655 (42.9)	3.15 (5.07)	2157	10	9th(3TB)Gear 0.524 (0.319)	13.55 (2.67)	194 (90)	79 (26)	29.8 (101.0)
81.9 (61.1)	9075 (40.4)	3.39 (5.45)	2163	8	10th(2TD) Gear 0.520 (0.317)	13.65 (2.69)	192 (89)	79 (26)	29.8 (101.0)
82.5 (61.5)	8355 (37.2)	3.70 (5.96)	2127	7	11th(4TA)Gear 0.514 (0.313)	13.81 (2.72)	189 (87)	79 (26)	29.8 (101.0)
84.8 (63.2)	8430 (37.5)	3.77 (6.07)	2126	7	12th(3TC)Gear 0.500 (0.304)	14.21 (2.80)	189 (87)	79 (26)	29.8 (101.0)
84.9 (63.3)	7380 (32.8)	4.31 (6.94)	2099	6	13th(4TB)Gear 0.498 (0.303)	14.28 (2.81)	190 (88)	79 (26)	29.8 (101.0)
84.9 (63.3)	7225 (32.1)	4.41 (7.09)	2104	6	14th(3TD)Gear 0.496 (0.302)	14.31 (2.82)	190 (88)	79 (26)	29.8 (101.0)
85.4 (63.7)	7105 (31.6)	4.51 (7.26)	2073	6	15th(1LA)Gear 0.484 (0.294)	14.67 (2.89)	190 (88)	79 (26)	29.8 (101.0)
81.9 (61.1)	6015 (26.8)	5.11 (8.23)	2089	5	16th(4TC)Gear 0.510 (0.310)	13.91 (2.74)	190 (88)	79 (26)	29.8 (101.0)
83.3 (62.1)	5905 (26.3)	5.29 (8.52)	2059	5	17th(1LB)Gear 0.494 (0.301)	14.37 (2.83)	190 (88)	79 (26)	29.8 (101.0)
79.8 (59.5)	5070 (22.5)	5.90 (9.50)	2049	5	18th(4TD)Gear 0.514 (0.313)	13.81 (2.72)	192 (89)	79 (26)	29.8 (101.0)
82.3 (61.4)	4895 (21.8)	6.30 (10.15)	2065	4	19th(1LC)Gear 0.501 (0.305)	14.16 (2.79)	192 (89)	79 (26)	29.8 (101.0)
81.8 (61.0)	4105 (18.3)	7.47 (12.02)	2077	4	20th(1LD)Gear 0.505 (0.307)	14.06 (2.77)	190 (88)	79 (26)	29.8 (101.0)
81.1 (60.5)	3905 (17.4)	7.79 (12.54)	2057	4	21st(2LA)Gear 0.502 (0.306)	14.14 (2.79)	192 (89)	79 (26)	29.8 (101.0)
80.0 (59.6)	3365 (15.0)	8.92 (14.36)	2039	5	22nd(2LB)Gear 0.509 (0.309)	13.96 (2.75)	187 (86)	79 (26)	29.8 (101.0)
79.1 (59.0)	2985 (13.3)	9.94 (16.00)	2023	5	23rd(3LA)Gear 0.512 (0.312)	13.86 (2.73)	190 (88)	79 (26)	29.8 (101.0)
75.5 (56.3)	2650 (11.8)	10.68 (17.18)	2061	4	24th(2LC)Gear 0.546 (0.332)	12.99 (2.56)	189 (87)	79 (26)	29.8 (101.0)

TRACTOR SOUND LEVEL WITH CAB	Front Wheel Drive	
	2WD dB(A)	Engaged dB(A)
At no load in 14th(3TD)gear	76.0	76.0
Bystander	--	--

10.79 (17.36), 12.02 (19.35), 12.62 (20.31), 13.90 (22.37), 14.20 (22.85), 16.27 (26.19), 16.62 (26.74), 19.21 (30.91), 22.48 (36.18) **Clutch** multiple wet disc operated by foot pedal **Brakes** multiple wet disc hydraulically operated by two foot pedals that can be locked together **Steering** hydrostatic **Power take-off** 540 rpm at 1976 engine rpm or 1000 rpm at 2000 engine rpm **Unladen tractor mass** 2WD - 9985 lb (4530 kg), FWA - 10540 lb (4780 kg)

REPAIRS AND ADJUSTMENTS: No repairs or adjustments

REMARKS: All test results were determined from observed data obtained in accordance with official OECD test procedures. This tractor did not meet the manufacturer's claims of 12987 lbs (5850 kg) lift at link ends nor lift of 7000 lbs (3182 kg) at 24" with 2 5/8" (66.7 mm) cylinders. The performance figures on this summary were taken from a test conducted under the OECD Code II test procedure.

We, the undersigned, certify that this is a true summary of data from OECD Reports No. **1856 & 1857**, Nebraska Summary 302, June 21, 2000.

Brent T. Sampson
Test Engineer

L.L. Bashford
M.F. Kocher
R.D. Grisso Jr.
Board of Tractor Test Engineers

DRAWBAR PERFORMANCE

(Unballasted - 2WD)

FUEL CONSUMPTION CHARACTERISTICS

Power Hp (kW)	Drawbar pull lbs (kN)	Speed mph (km/h)	Crank- shaft speed rpm	Slip %	Fuel lb/hp.hr (kg/kW.h)	Consumption Hp.hr/gal (kW.h/l)	Temp.°F cool- ing med	Temp.°F (°C) Air dry bulb	Barom. inch Hg (kPa)
Maximum Power 17th(1LB) Gear									
85.1 (63.5)	5980 (26.6)	5.34 (8.58)	2097	6	0.487 (0.296)	14.57 (2.87)	189 (87)	77 (25)	29.7 (100.5)
75% of Pull at Maximum Power 17th(1LB) Gear									
55.7 (41.5)	3640 (16.2)	5.74 (9.23)	2229	5	0.603 (0.367)	11.78 (2.32)	192 (89)	82 (28)	29.6 (100.1)
50% of Pull at Maximum Power 17th(1LB) Gear									
37.5 (28.0)	2415 (10.8)	5.83 (9.38)	2248	4	0.758 (0.461)	9.39 (1.85)	192 (89)	82 (28)	29.6 (100.1)
75% of Pull at Reduced Engine Speed 19th(1LC) Gear									
55.9 (41.7)	3640 (16.2)	5.76 (9.27)	1896	5	0.524 (0.319)	13.55 (2.67)	190 (88)	82 (28)	29.6 (100.1)
50% of Pull at Reduced Engine Speed 19th(1LC) Gear									
37.8 (28.2)	2425 (10.8)	5.85 (9.42)	1912	4	0.623 (0.379)	11.42 (2.25)	190 (88)	82 (28)	29.6 (100.1)

MAXIMUM POWER IN SELECTED GEARS

7th(3TA) Gear									
66.1 (49.3)	9520 (42.3)	2.60 (4.19)	2206	14	0.603 (0.367)	11.78 (2.32)	190 (88)	77 (25)	29.7 (100.5)
8th(2TC) Gear									
68.7 (51.2)	9375 (41.7)	2.75 (4.42)	2206	14	0.593 (0.361)	11.98 (2.36)	190 (88)	77 (25)	29.7 (100.5)
9th(3TB) Gear									
77.6 (57.9)	9330 (41.5)	3.12 (5.02)	2187	12	0.551 (0.335)	12.89 (2.54)	190 (88)	77 (25)	29.7 (100.5)
10th(2TD) Gear									
79.7 (59.4)	9125 (40.6)	3.27 (5.27)	2173	11	0.538 (0.327)	13.20 (2.60)	192 (89)	77 (25)	29.7 (100.5)
11th(4TA) Gear									
80.6 (60.1)	8405 (37.4)	3.60 (5.79)	2122	9	0.526 (0.320)	13.50 (2.66)	194 (90)	77 (25)	29.7 (100.5)
12th(3TC) Gear									
80.7 (60.2)	8230 (36.6)	3.68 (5.93)	2123	9	0.517 (0.315)	13.73 (2.71)	192 (89)	77 (25)	29.7 (100.5)
13th(4TB) Gear									
81.8 (61.0)	7240 (32.2)	4.24 (6.82)	2100	8	0.506 (0.308)	14.01 (2.76)	194 (90)	77 (25)	29.7 (100.5)
14th(3TD) Gear									
82.5 (61.5)	7060 (31.4)	4.38 (7.05)	2108	7	0.518 (0.315)	13.71 (2.70)	190 (88)	77 (25)	29.7 (100.5)
15th(1LA) Gear									
84.9 (63.3)	6940 (30.9)	4.59 (7.38)	2126	7	0.499 (0.303)	14.24 (2.80)	189 (87)	77 (25)	29.7 (100.5)
16th(4TC) Gear									
83.0 (61.9)	6210 (27.6)	5.01 (8.07)	2073	6	0.497 (0.302)	14.29 (2.81)	191 (88)	77 (25)	29.7 (100.5)
17th(1LB) Gear									
85.1 (63.5)	5980 (26.6)	5.34 (8.58)	2097	6	0.487 (0.296)	14.57 (2.87)	189 (87)	77 (25)	29.7 (100.5)
18th(4TD) Gear									
78.3 (58.4)	4990 (22.2)	5.88 (9.47)	2069	6	0.523 (0.318)	13.57 (2.67)	192 (89)	77 (25)	29.7 (100.5)
19th(1LC) Gear									
83.4 (62.2)	5055 (22.5)	6.19 (9.96)	2060	6	0.500 (0.304)	14.21 (2.80)	194 (90)	77 (25)	29.7 (100.5)
20th(1LD) Gear									
79.8 (59.5)	4145 (18.4)	7.22 (11.62)	2037	5	0.511 (0.310)	13.92 (2.74)	192 (89)	77 (25)	29.7 (100.5)
21st(2LA) Gear									
80.1 (59.7)	3955 (17.6)	7.59 (12.21)	2035	5	0.507 (0.308)	14.01 (2.76)	194 (90)	77 (25)	29.7 (100.5)
22nd(2LB) Gear									
79.1 (59.0)	3315 (14.7)	8.95 (14.40)	2043	5	0.514 (0.313)	13.81 (2.72)	194 (90)	77 (25)	29.7 (100.5)

Tested Without Ballast

TIRES AND WEIGHT

Rear tires - No.,size, ply & psi(kPa)

Front tires - No.,size, ply & psi(kPa)

Height of Drawbar

Static Weight with operator-Rear

- Front

- Total

Front Wheel Assist

Two 18.4R38; **,15(100)

Two 14.9R28; **,16(110)

21.7 in (550 mm)

6680 lb (3030 kg)

4025 lb (1825 kg)

10705 lb (4855 kg)

2WD

Two 18.4R38; **,15(100)

Two 11.00-16; 8; 36(250)

31.5 in (800 mm)

6670 lb (3025 kg)

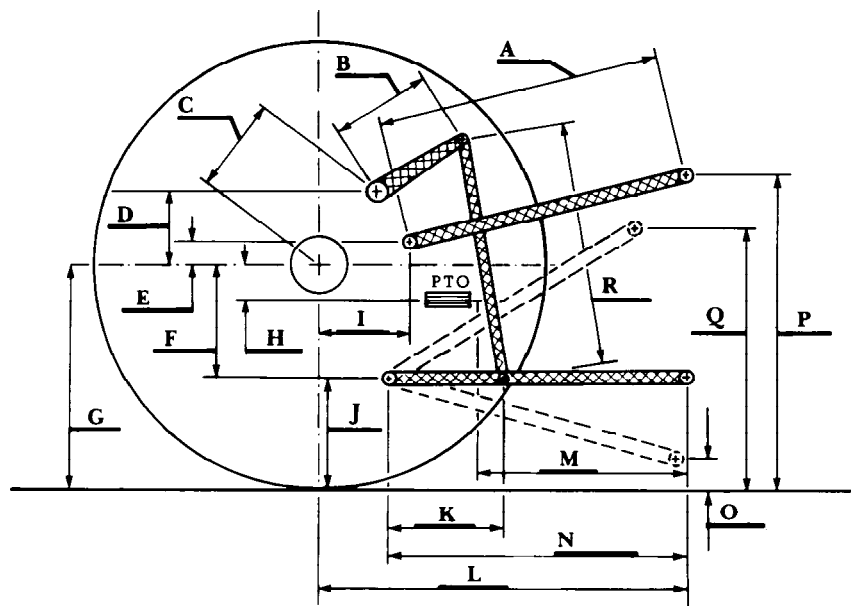
3485 lb (1580 kg)

10155 lb (4605 kg)

THREE POINT HITCH PERFORMANCE (OECD Static Test)

CATEGORY: II	lift cylinder diameter	
Quick Attach: None	66.7 mm	75 mm
Maximum Force Exerted		
Through Whole Range:	6655 lbs (29.6 kN)	8475 lbs (37.7 kN) (at the frame)
	8160 lbs (36.3 kN)	10385 lbs (46.2 kN) (at the hitch points)

	open center system	closed center system
i) Opening pressure of relief valve:	NA	NA
Sustained pressure of the open relief valve:	2845 psi (196 bar)	2845 psi (196 bar)
ii) Pump delivery rate at minimum pressure:	15.6 GPM (59.0 l/min)	25.3 GPM (95.7 l/min)
iii) Pump delivery rate at maximum		
hydraulic power:	14.1 GPM (53.4 l/min)	25.0 GPM (94.5 l/min)
Delivery pressure:	2640 psi (182 bar)	2305 psi (159 bar)
Power:	21.7 HP (16.2 kW)	33.6 HP (25.0 kW)



HITCH DIMENSIONS AS TESTED NO LOAD

	inch	mm
A	26.4	670
B	11.6	295
C	13.9	354
D	13.0	330
E	7.9	200
F	11.0	280
G	32.3	820
H	1.7	43
I	15.3	389
J	21.3	540
K	21.4	543
L	43.5	1104
M	24.8	629
N	37.1	943
O	8.3	211
P	45.3	1150
Q	34.6	880
R	28.1	715