

University of Nebraska - Lincoln

DigitalCommons@University of Nebraska - Lincoln

Great Plains Research: A Journal of Natural and
Social Sciences

Great Plains Studies, Center for

Spring 2004

Great Plains Research, Volume 14, Number 1, Spring 2004

Follow this and additional works at: <https://digitalcommons.unl.edu/greatplainsresearch>



Part of the [Other International and Area Studies Commons](#)

"Great Plains Research, Volume 14, Number 1, Spring 2004" (2004). *Great Plains Research: A Journal of Natural and Social Sciences*. 707.

<https://digitalcommons.unl.edu/greatplainsresearch/707>

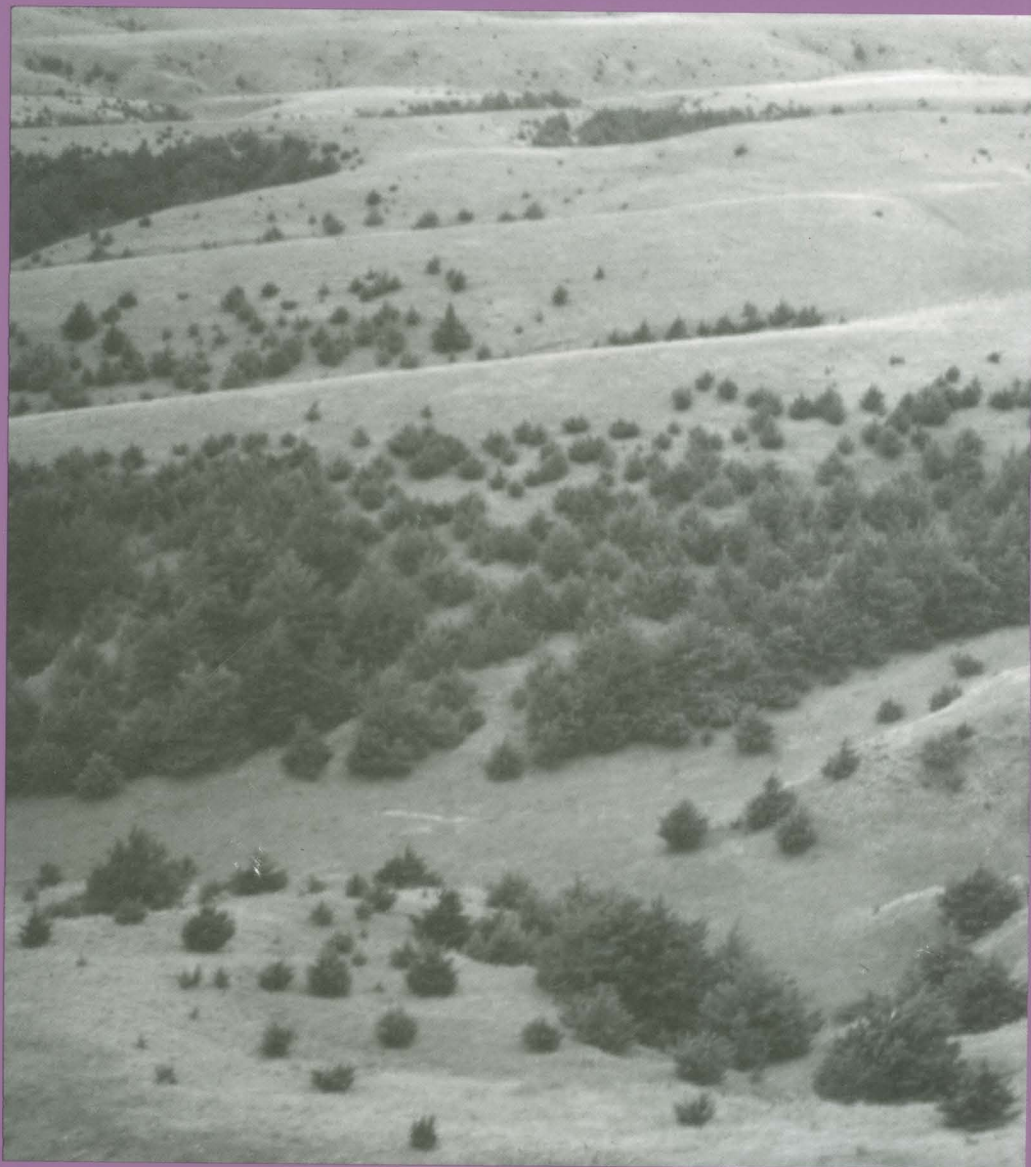
This Article is brought to you for free and open access by the Great Plains Studies, Center for at DigitalCommons@University of Nebraska - Lincoln. It has been accepted for inclusion in Great Plains Research: A Journal of Natural and Social Sciences by an authorized administrator of DigitalCommons@University of Nebraska - Lincoln.

GREAT PLAINS RESEARCH

A JOURNAL OF
NATURAL AND
SOCIAL SCIENCES

Volume 14, Number 1

Spring 2004



CENTER FOR GREAT PLAINS STUDIES
UNIVERSITY OF NEBRASKA

CENTER FOR GREAT PLAINS STUDIES

The Center for Great Plains Studies was established in 1976 by the University of Nebraska to promote a greater understanding of the people, culture, history, and environment of the Great Plains through a variety of research, teaching, and outreach programs. The Center encompasses six divisions: Administration and Programs, Great Plains Art Collection, *Great Plains Quarterly*, *Great Plains Research*, *Journals of the Lewis and Clark Expedition* editing project, and *Encyclopedia of the Great Plains* writing and editing project. Administered through the College of Arts & Sciences of the University of Nebraska–Lincoln, the Center includes resident Fellows on four campuses and non-resident Associate Fellows around the world. **James Stubbendieck**, *Grassland Ecology*, is director of the Center. **Gary Moulton**, *History*, is associate director.

GREAT PLAINS RESEARCH, a biannual multidisciplinary science journal, publishes original research and scholarly reviews of important advances in the natural and social sciences with relevance to the Great Plains region, with special emphasis on environmental, economic and social issues. It includes reviews of books and reports on symposia and conferences. The journal is indexed and/or abstracted in *America: History and Life*, *BIOSIS Previews*, *Biological Abstracts*, *Cambridge Scientific Abstracts*, *C-CIARN*, *Environment Abstracts*, *Historical Abstracts*, *Geo Abstracts* and *GEODATA*, *Journal of Planning Literature*, *Meteorological and Geostrophysical Abstracts*, and *Sociological Abstracts*, Inc.

The editorial policy encourages those submissions in particular that make general findings in the sciences relevant to this vast region. Articles should include thoughtful reviews of critical scientific findings and issues relevant to the Great Plains, whether the research was done in the Great Plains or not. The key will be how well the findings are related to the region, and how well the science is communicated to other scientists outside the specific discipline, in the style of *Scientific American*, for example. The most successful paper in natural sciences for a journal year will be acknowledged with the Charles E. Bessey Award, and the best paper in social sciences will receive the Leslie Hewes Award.

The following types of articles are of particular interest:

- Synopses** of the “state of the science” on topics with relevance to the Great Plains;
- Overviews** of critical environmental, economic and social issues for the plains;
- Reviews** of knowledge on important questions and their regional application;
- Syntheses and cross-disciplinary analyses** with relevance to the plains;
- Original research findings**, such as have been published in *GPR* since 1991.

Scientists doing interesting work with important implications for this region are invited to synthesize their significant research results and present them and their relevance to this audience. The overall goal is to develop *Great Plains Research* as a centralized outlet for science of regional importance, to communicate important scientific findings to as wide an educated audience as possible, and to help keep scientists, interested citizens and leaders of this region up-to-date on scientific progress relevant to the Great Plains.

Editors: James Stubbendieck, *Grassland Ecology*, University of Nebraska-Lincoln [2003]
Robert F. Diffendal Jr., *Conservation & Survey Division*, Emeritus,
University of Nebraska-Lincoln [January 1, 2004 –]

Editorial Assistant: Gwen Bedient

Book Review Editor: George E. Wolf, *English*, Emeritus, University of Nebraska-Lincoln

Production Manager: Gretchen Walker

Production Designer: Linda J. Ratcliffe

Copyeditor: Lona Dearthmont

Cover photo: *Eastern redcedar in the loess hills south of Callaway, Custer County, Nebraska.* Photograph courtesy of James Stubbendieck.

GREAT PLAINS RESEARCH (ISSN 1052-5165) is published biannually in Spring and Fall by the Center for Great Plains Studies, University of Nebraska–Lincoln. Subscriptions per year: US Individual \$25.00, Institutional \$50.00; Canada Individual \$30.00, Institutional \$55.00; other foreign Individual \$35.00, Institutional \$60.00. Third class postage paid at Lawrence, Kansas. *Postmaster: send address changes and undeliverable copies to Great Plains Research, 1155 Q Street P.O. Box 880246, Lincoln, NE 68588-0246. Return postage is guaranteed.* Phone: 402-472-6970; FAX: 402-472-0463; E-mail: <gpr@unl.edu>; Web page: <<http://www.unl.edu/plains/publications/GPR/gpr.html>>

© Copyright 2004 by the Center for Great Plains Studies

This publication is printed on acid-free recycled paper by Allen Press, Inc., Lawrence, KS.

GREAT PLAINS RESEARCH

Volume 14 Number 1

Spring 2004

CONTENTS

SOCIAL SCIENCES

Social Capital, Wealth, and Nebraska Towns

John L. Anderson.....3

Mapping Changes in Denominational Membership in the Great Plains, 1952-2000

Holly R. Barcus and Stanley D. Brunn.....19

New Perspectives on the Changing Religious Diversity in the Great Plains

Stanley D. Brunn and Holly R. Barcus.....49

Parents' Perceptions of Wraparound Services in Lancaster County, Nebraska

Paul Mooney and Gregory J. Benner.....77

NATURAL SCIENCES

Fishes of the Missouri National Recreational River, South Dakota and Nebraska

Charles R. Berry Jr. and Bradley Young.....89

Wintering Canada Geese along the Platte Rivers of Nebraska, 1960-2000

Mark P. Vrtiska and Nick Lyman.....115

Seed Dynamics of Eastern Redcedar in the Mixed-Grass Prairie

Susan J. Tunnell, James Stubbendieck, Julie Huddle, and Jennifer Brolhier.....129

BOOK REVIEWS.....143

LETTER FROM THE EDITOR.....159

NEWS AND NOTES.....160

BOOK REVIEWS

Maher, Harmon D., Jr., George F. Engelmann, and Robert D. Shuster. Roadside Geology of Nebraska By Rex Buchanan	143
Collier, Michael, and Robert H. Webb. Floods, Droughts, and Climate Change By Merlin P. Lawson	144
Weltzin, Jake F., and Guy R. McPherson, eds. Changing Precipitation Regimes and Terrestrial Ecosystems: A North American Perspective By Luke J. Marzen	145
Phillips, H. Wayne. Plants of the Lewis and Clark Expedition By Alfred E. Schuyler.....	146
Schmidly, David J. Texas Natural History: A Century of Change By Brian Barnette	147
Dodd, C. Kenneth, Jr. North American Box Turtles: A Natural History By Lynnette Sievert	148
Johnsgard, Paul. Grassland Grouse and Their Conservation By John W. Connelly	149
Foran, Max. Trails and Trials: Markets and Land Use in the Alberta Beef Cattle Industry, 1881-1948 By Ian MacLachlan	150
Schmitz, Andrew, Hartley Furtan, and Katherine Baylis. Agricultural Policy, Agribusiness, and Rent-Seeking Behavior By Brian T. Oleson	151
Adams, Jane, ed. Fighting for the Farm: Rural America Transformed By John C. Allen	152
Knight, Richard L., Wendell C. Gilgert, and Ed Marston, eds. Ranching West of the 100th Meridian: Culture, Ecology, and Economics By Ann L. Hild	153
Fowler, Loretta. The Columbia Guide to American Indians of the Great Plains By F. Todd Smith	155
Palmer, Gus, Jr. Telling Stories the Kiowa Way By Benjamin R. Kracht	156
Deloria, Vine, Jr. The Indian Reorganization Act: Congresses and Bills By Douglas Nash	157
Thornton, Martin, Roy Todd, and David N. Collins, eds. Aboriginal People and Other Canadians Shaping New Relationships By J. R. Miller	158

NEWS AND NOTES

CHARLES E. BESSEY AWARD

Great Plains Research is pleased to announce the article by Craig Davis, "Habitat Use and Migration Patterns of Sandhill Cranes along the Platte River, 1998-2001," is the winner of the Charles E. Bessey Award for the best paper in natural sciences published during the volume year of 2003. This paper was featured in Volume 13 (Fall 2003): 199-216. The annual award includes a cash stipend of \$250.

LESLIE HEWES AWARD

The winner of the Leslie Hewes Award for the best paper in social sciences published in *Great Plains Research* during the volume year 2003, is "Differential Population and Income Migration in the Great Plains, 1995-1998" by Alexander C. Vias and Charles O. Collins. The article was published in Volume 13 (Fall 2003): 321-52. The annual award includes a cash stipend of \$250.

CONFERENCES

June 3-5, 2004

The Center for Great Plains Studies at the University of Nebraska-Lincoln presents its 28th Annual Interdisciplinary Symposium on "The Nature of Lewis and Clark on the Great Plains" at the Lied Lodge and Conference Center, 2700 Sylvan Road, Nebraska City, Nebraska. Registration information can be found on the website: <www.unl.edu/plains/events/2004/overview.html>. Or, contact the Center at (402) 472-3082.

August 12-15, 2004

The 67th annual meeting of the **Rural Sociological Society** will be held at the Sheraton Grand Hotel, Sacramento, Calif. The theme will be "Strengthening Partnerships: New Paths to Rural Prosperity." More information can be found on the society's website: <www.ruralsociology.org> Or contact Domenico "Mimmo" Parisi, RSS 2004 Program Chair, Depts. of Sociology, Anthropology, and Social Work, and Social Science Research Center, 103 Research Park, P.O. Box 5287, Mississippi State, MS 39762.

August 26-29, 2004

The German-Canadian Studies Department at the University of Winnipeg presents an international conference on the settlement processes of Germans in Canada, "Assimilation, Integration, Acculturation? The German-Canadian Case," at the University of Winnipeg, Manitoba. For more information, check the department's website: <<http://germancanadian.uwinnipeg.ca>>; or contact Alexander Freund, Chair in German-Canadian Studies, University of Winnipeg, 515 Portage Avenue, Winnipeg, MB, Canada R3B 2E9; or e-mail: <a.freund@uwinnipeg.ca>.

INSTRUCTIONS TO AUTHORS

Great Plains Research publishes original research and scholarly reviews of important advances in the natural and social sciences with relevance to the Great Plains region, with special emphasis on environmental, economic and social issues in the plains. It includes reviews of books and reports on symposia and conferences on topics pertaining to the Great Plains. Papers must be comprehensible to a multidisciplinary community of scholars and lay readers who share interest in the region. Stimulating review and synthesis articles will be published if they inform, educate, and highlight both current status and further research directions. Authors of unsolicited reviews of symposia, conferences, and books should contact the editor before submitting their manuscripts.

Submissions. All manuscripts should be concise: 5,000 words total including reference section, with up to 4 tables or illustrations; if more graphic material is needed, please reduce total word count by 250 words per illustration. All submissions should be typed double-spaced, including abstract, text, quotations, and bibliography, on 8.5 by 11-inch white bond paper with 1-inch margins. Informational footnotes are not accepted. Authors should submit three copies of their manuscripts to: **Editor, Great Plains Research, University of Nebraska-Lincoln, P.O. Box 880246, Lincoln, NE 68588-0246.** If the manuscript is accepted for publication, author/s will be asked to send the final document as an e-mail attachment or on a 3.5-inch high density IBM-compatible computer diskette in a word processing or text file.

Review Process. All manuscripts are given double-blind review. Authors should prepare a separate title page with their name and affiliation, and any acknowledgments, which will not be sent to reviewers. The title of the paper should be repeated directly above the abstract. Authors should avoid self-identification in the text. When two external reviewers with expertise in the topic have submitted their evaluations, the manuscript is reviewed by the Associate Editors before the Editor makes the final decision to publish.

Article Style. The Editor would prefer authors to write simply and in the first person. Authors should aim to communicate with a broad interdisciplinary audience in jargon-free language and should avoid sexist, racist, or otherwise biased language or intent.

Title. Article titles should not exceed 10 words (or 82 characters) and should not have subtitles.

Main Headings are centered: Introduction, Methods, Results, Discussion, Conclusions, Acknowledgments, References. If you have subheadings that should be left justified, please indicate those.

Abstract. A short abstract of less than 150 words should precede the main text. The abstract should identify the problem addressed in the paper, indicate the methodology, and summarize the results. Authors should prepare an abstract that will be interesting to and understood by nonspecialists in the field.

Illustrations. All illustrations should be referenced parenthetically by arabic numbers in the text. For example, "Rainfall increases with elevation (Fig. 1)." Captions for each figure should be sent as a separate file and not included in the figure itself. All illustrations should be $4\frac{3}{8}$ " wide (no more than 7" tall) and sent as separate files as "grayscale" tiff or eps graphic files at 350 dpi; "line" illustrations at 1200 dpi. DO NOT embed graphic files into your article. DO NOT send figures as PowerPoint graphics or Word docs.

Measurements. All measurements should be given in **SI units** (expanded metric system).

Tables. Tables should be presented on separate sheets apart from the text, printed as quality images. They should be formatted to fit the standard text area of the journal ($4\frac{3}{8}$ " wide by 7.0" tall), since they may be treated as camera-ready illustrations at the time of publication. Send as a separate file with text file on diskette.

Reference Style. *Great Plains Research* uses *The Chicago Manual of Style*, 15th edition, as its reference guide. The journal uses author-date citations in the text [for example, in chronological order: (Smith et al. 1990; Templer 1992; Jones in press)] and a complete reference section that gives author, year, title, source, and page references for journal or newspaper articles. **Include page numbers for quotations** [for example: (Templer 1992: 45)]. For a journal article:

Murkin, H.R. 1998. Freshwater functions and values of prairie wetlands. *Great Plains Research* 8: 3-15.

For a book:

Blouet, B.W., and F.C. Luebke, eds. 1979. *The Great Plains: Environment and Culture*. Lincoln: University of Nebraska Press.

For an article in a book or conference volume:

Wedel, W.R. 1994. Coronado and Quivira. In *Spain and the Plains*, ed. R.H. Vigil, F.W. Kaye, and J.R. Wunder, 45-66. Niwot: University Press of Colorado.

GREAT PLAINS RESEARCH

VOLUME 14, NUMBER 1

SPRING 2004

SOCIAL SCIENCES

Social Capital, Wealth, and Nebraska Towns

John L. Anderson

Mapping Changes in Denominational Membership in the Great Plains, 1952-2000

Holly R. Barcus and Stanley D. Brunn

New Perspectives on the Changing Religious Diversity in the Great Plains

Stanley D. Brunn and Holly R. Barcus

Parents' Perceptions of Wraparound Services in Lancaster County, Nebraska

Paul Mooney and Gregory J. Benner

NATURAL SCIENCES

Fishes of the Missouri National Recreational River, South Dakota and Nebraska

Charles R. Berry Jr. and Bradley Young

Wintering Canada Geese along the Platte Rivers of Nebraska, 1960-2000

Mark P. Vrtiska and Nick Lyman

Seed Dynamics of Eastern Redcedar in the Mixed-Grass Prairie

Susan J. Tunnell, James Stubbendieck, Julie Huddle, and Jennifer Brollier

BOOK REVIEWS



The University of Nebraska-Lincoln does not discriminate based on gender, age, disability, race, color, religion, marital status, veteran's status, national or ethnic origin, or sexual orientation.