

University of Nebraska - Lincoln

DigitalCommons@University of Nebraska - Lincoln

INTSORMIL Presentations

International Sorghum and Millet Collaborative
Research Support Program (INTSORMIL CRSP)

12-2010

Sorghum Malting: Introduction, Objectives, and Scientific Principles

John R.N. Taylor

University of Pretoria, John.taylor@up.ac.za

Follow this and additional works at: <https://digitalcommons.unl.edu/intsormilpresent>



Part of the [Agronomy and Crop Sciences Commons](#), [Food Chemistry Commons](#), and the [Food Processing Commons](#)

Taylor, John R.N., "Sorghum Malting: Introduction, Objectives, and Scientific Principles" (2010).

INTSORMIL Presentations. 21.

<https://digitalcommons.unl.edu/intsormilpresent/21>

This Presentation is brought to you for free and open access by the International Sorghum and Millet Collaborative Research Support Program (INTSORMIL CRSP) at DigitalCommons@University of Nebraska - Lincoln. It has been accepted for inclusion in INTSORMIL Presentations by an authorized administrator of DigitalCommons@University of Nebraska - Lincoln.



SORGHUM MALTING

INTRODUCTION, OBJECTIVES AND SCIENTIFIC PRINCIPLES

John R.N. Taylor

**Dept. Food Science, University of Pretoria
South Africa**

John.taylor@up.ac.za



**UNIVERSITEIT VAN PRETORIA
UNIVERSITY OF PRETORIA
YUNIBESITHI YA PRETORIA**



WHAT IS MALTING

Limited germination of cereal grains in moist air under controlled conditions



**Pneumatic
Germination
Box type Sorghum
Maltings**

WHY MALT SORGHUM – PRODUCTS

Sorghum Malt for home brewing

For brewing Opaque beer, Lager and Stout

For “brewing” Malt (Malta) type non-alcoholic beverages

To produce Malt Extract for hot malted beverages, cereal and confectionery flavouring and colouring

For Breakfast Cereals

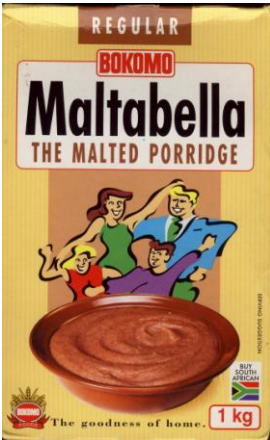
For “Power Flour” – enzyme active flour to “thin” infant porridges



Nigerian sorghum lagers,
stout, malta and hot malt drink



Opaque beer



Sorghum
malt

Sorghum malt
breakfast cereal



Cola
flavoured
malta

WHY MALT – THE SCIENTIFIC REASONS

- To produce *Hydrolytic enzymes* (Amylases, Proteases, Lipases, Cell wall degrading enzymes, Phytase etc)

By means of these enzymes to:

1. *Modify* the sorghum grain structure during Malting
 - So that the grain is more easily solubilised during the brewing process

By means of these enzymes to:

2. Produce *Simple Sugars* and *Amino Acids (FAN)* during Brewing
 - The Yeast requires these for fermentation into Alcohol and Carbon dioxide

WHY MALT – THE SCIENTIFIC REASONS (CONTINUED)

3. By means of the these enzymes to:

Produce *Sugars* and *Amino acids* during Malting

- Sugars give malt its sweet taste
- When malt is dried at high temperature (*Kilned*) chemical reactions take place involving sugars and amino acids (*Maillard Browning* and *Caramelization*) to give malt its attractive brown colour and malty flavour

WHAT ARE ENZYMES

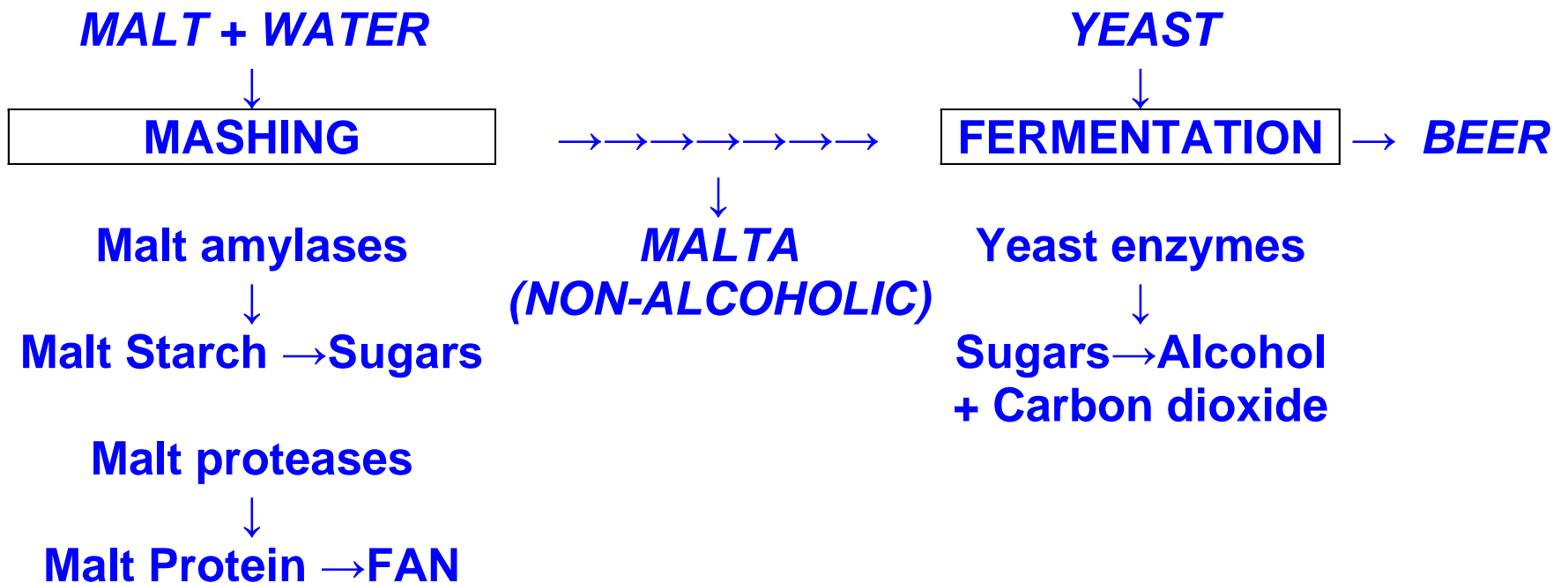
They are protein-based catalysts that carry out all the metabolic processes of living organisms

By far the important malt enzymes are:

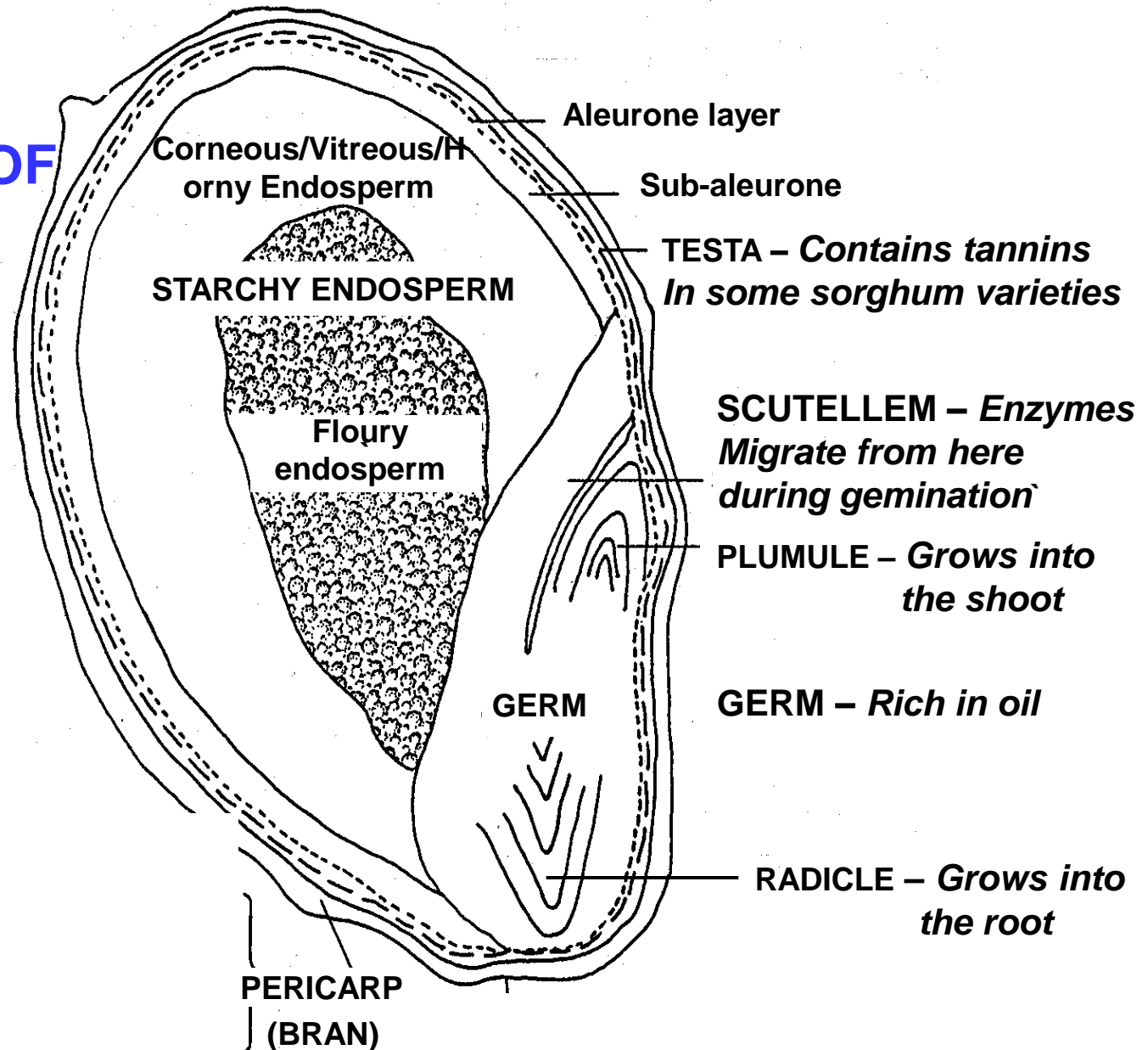
Amylases - Break down starch into its component simple sugars

Proteases – Break down proteins into their component amino acids – In brewing these are referred to as Free Amino Acids (FAN)

SIMPLIFIED MALTA AND BEER BREWING PROCESS USING MALT



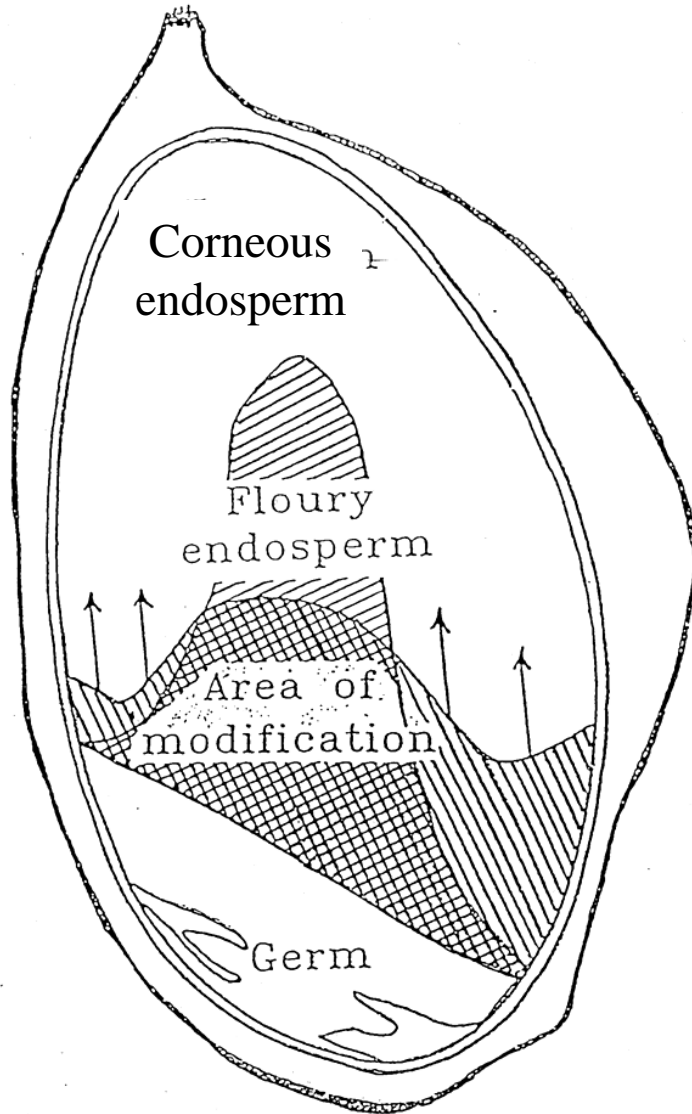
STRUCTURE AND COMPOSITION OF THE SORGHUM GRAIN



STARCHY ENDOSPERM
– Source of starch
for brewing

BRAN - rich in fibre
– in many sorghum varieties it is pigmented red

SORGHUM GRAIN STRUCTURE MODIFICATION DURING MALTING



**During Germination
Enzymes migrate from
the Germ and partially
Break Down the Endosperm
Starch Granules and
Protein Bodies and Matrix
– An area of Modification
can be seen**

**NB In Sorghum - Cell Wall
break down seems to be
Negligible – This is different from
what happens in barley malting**

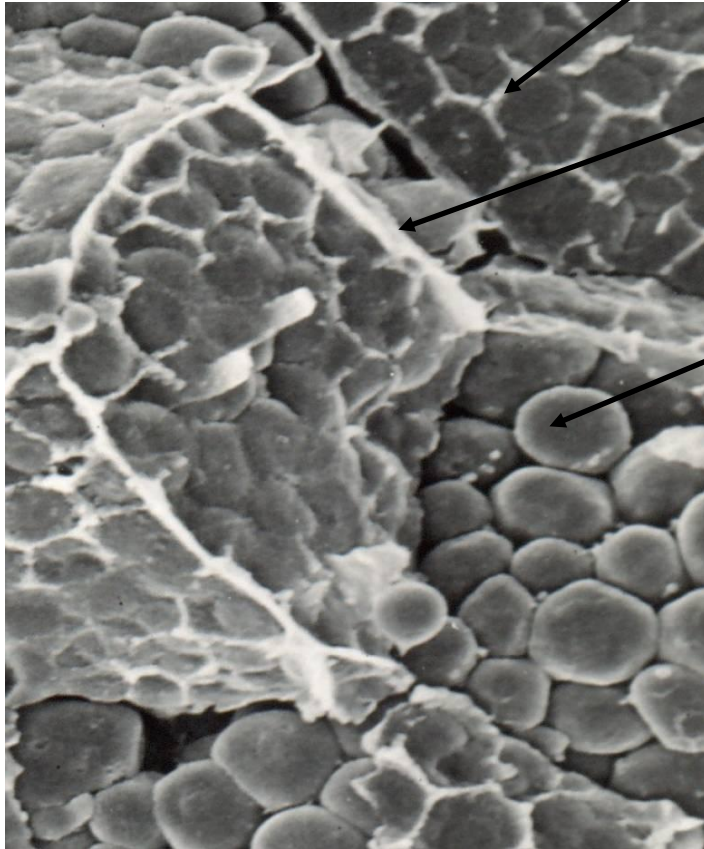
STARCH MODIFICATION DURING GERMINATION

(As seen by Scanning Electron Microscopy)

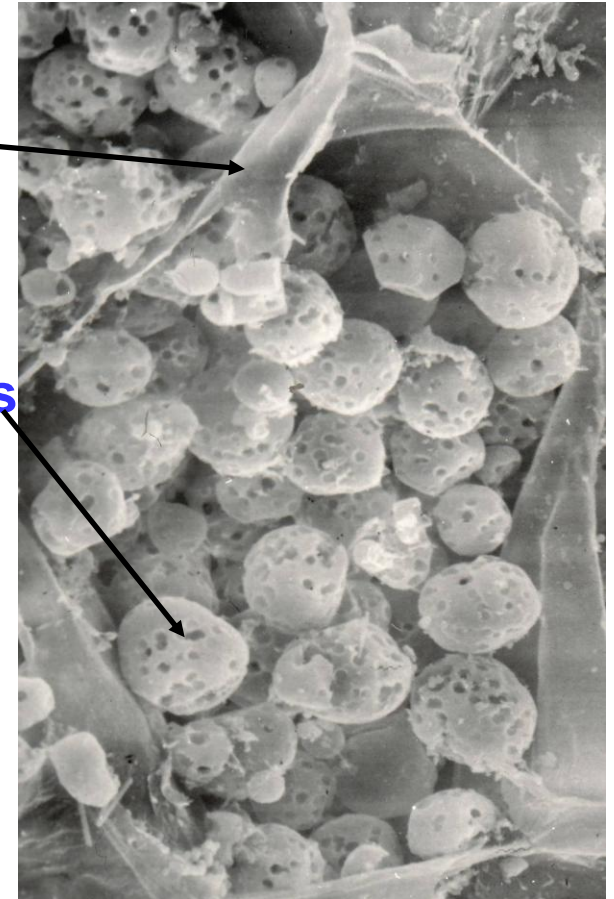
Protein matrix

Cell walls
(NB Cell walls
Intact in malt)

Starch granules



Grain cells

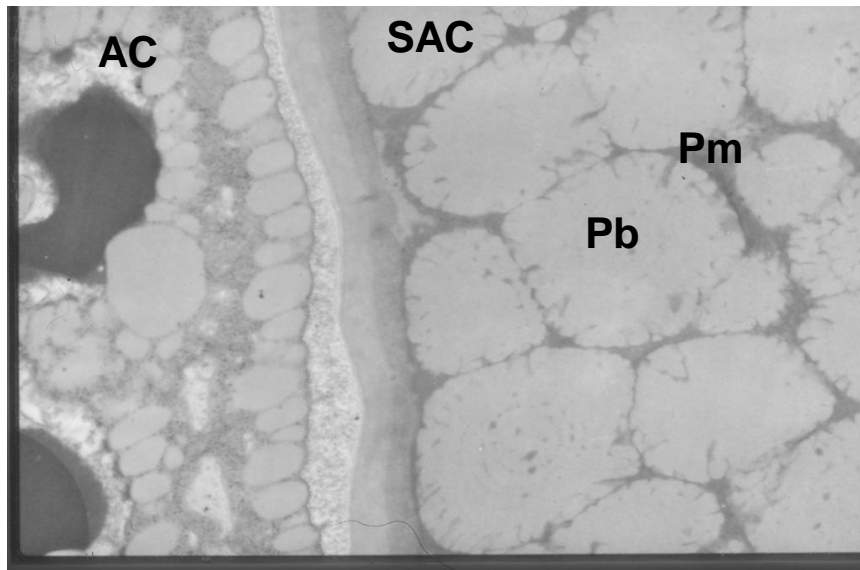


Malt cell

NB In malt - starch granules are full of holes
Where amylase has broken them down

PROTEIN MODIFICATION DURING GERMINATION

(As seen by Transmission Electron Microscopy)



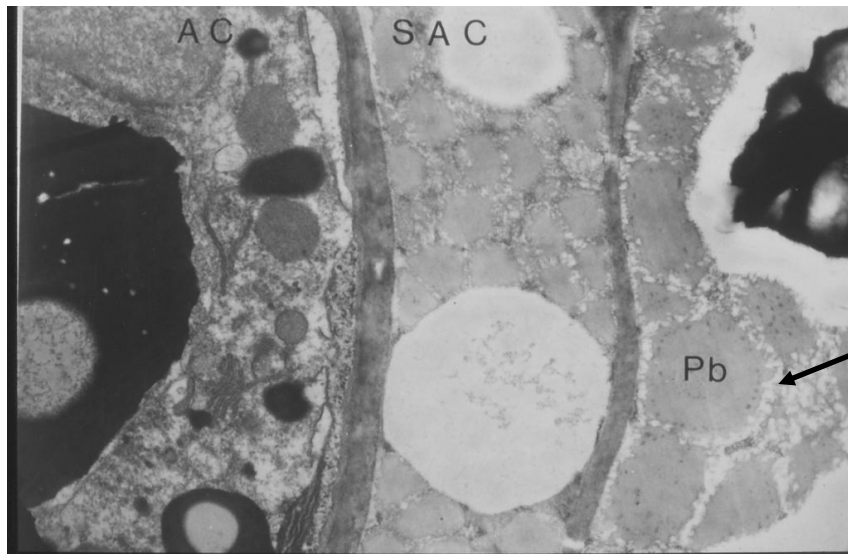
Grain

AC = part of Aleurone Cell

SAC = part of Sub-Aleurone Cell

Pb = Protein body

Pm = Protein matrix



Malt

In Malt – Protein bodies and Protein matrix degraded away at edges, Where proteases have broken them down

STARCH HYDROLYSIS BY AMYLASES

Starch – polymer of 100s of glucose sugar units

-G-

There are millions of starch molecules in every starch granule

and

Millions of granules in every sorghum grain

and

Millions of sorghum grains in every brew

The are two major type of amylases in sorghum malt:

1. Alpha-amylase chops the starch molecule at random

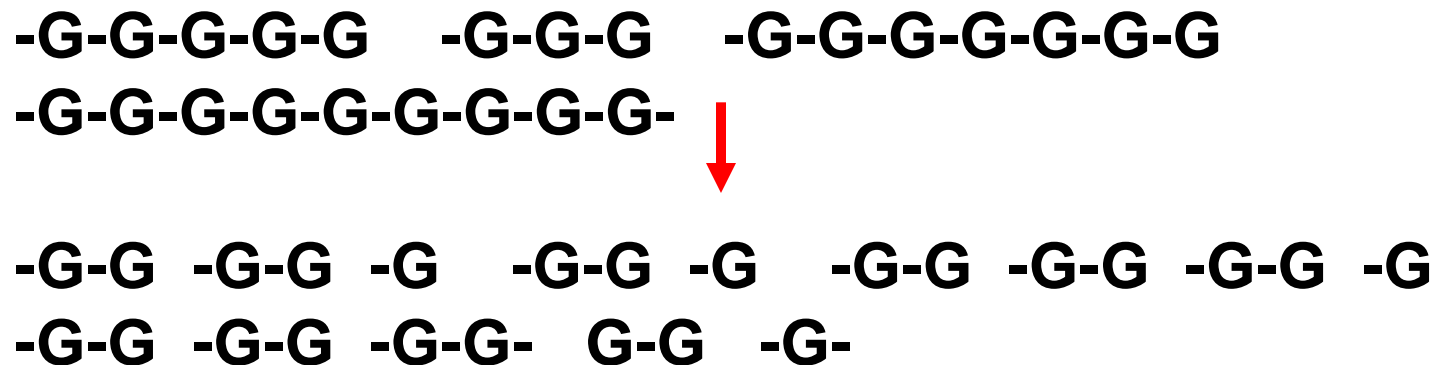
-G-



-G-G-G-G-G -G-G-G -G-G-G-G-G-G-G
-G-G-G-G-G-G-G-G-G-

These short chains of glucose units are called Dextrins

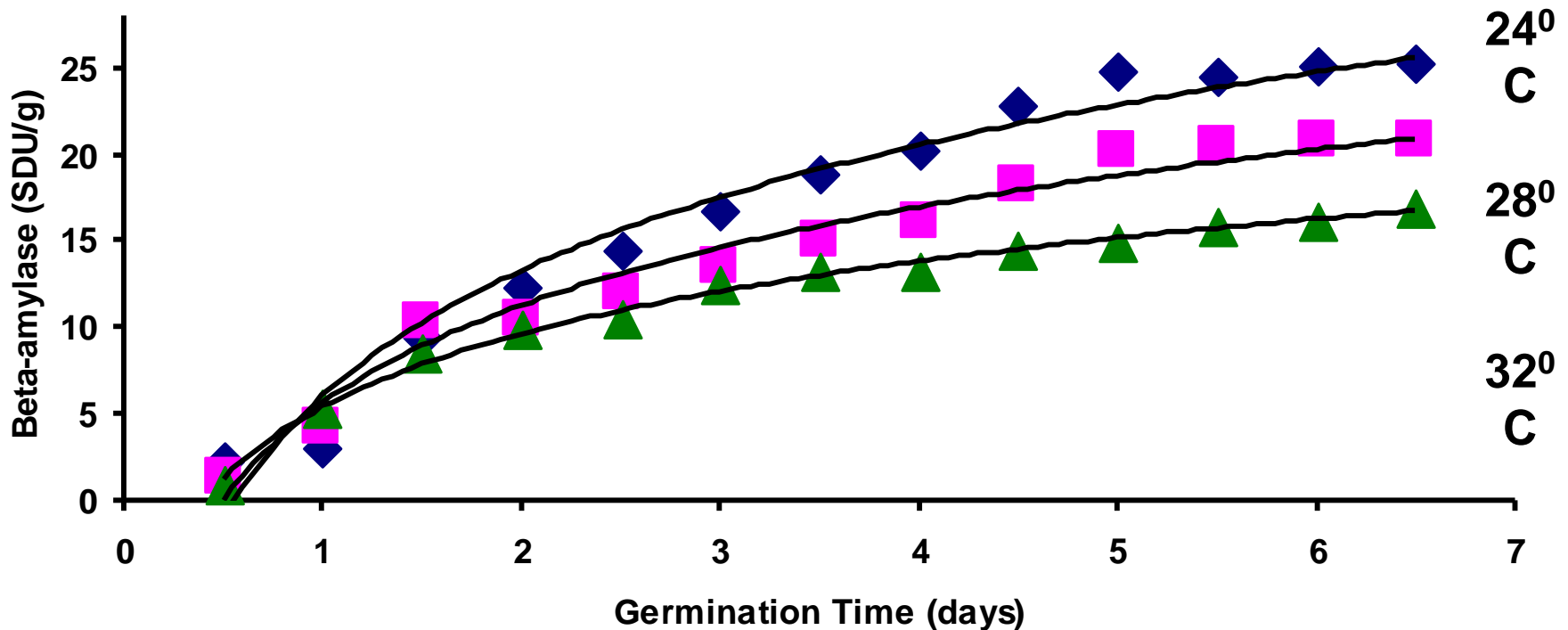
2. Beta-amylase chops up the dextrins into Maltose (2 glucose units)



N.B. There is much less beta-amylase in sorghum malt than in barley malt

The joint activity of the alpha- and beta-amylase enzymes is referred to as Diastatic Power (DP)

DEVELOPMENT OF AMYLASE ACTIVITY DURING SORGHUM MALTING



There is essential no amylase activity in unmalted sorghum grain.

Activity develops during germination and is affected by germination Temperature and Moisture – This shows beta-amylase activity but Alpha-amylase is similar

PROTEIN HYDROLYSIS BY PROTEASES

Proteins – polymers of 50+ amino acid units

-A-

There are many millions of protein molecules in each sorghum grain

Proteins are broken down by two main types of protease

1. Endoproteases – Chop at random to produce peptides (short chains of amino acids)
2. Exopeptidases – Chop up peptides to produce FAN

Sorghum malt is rich in FAN

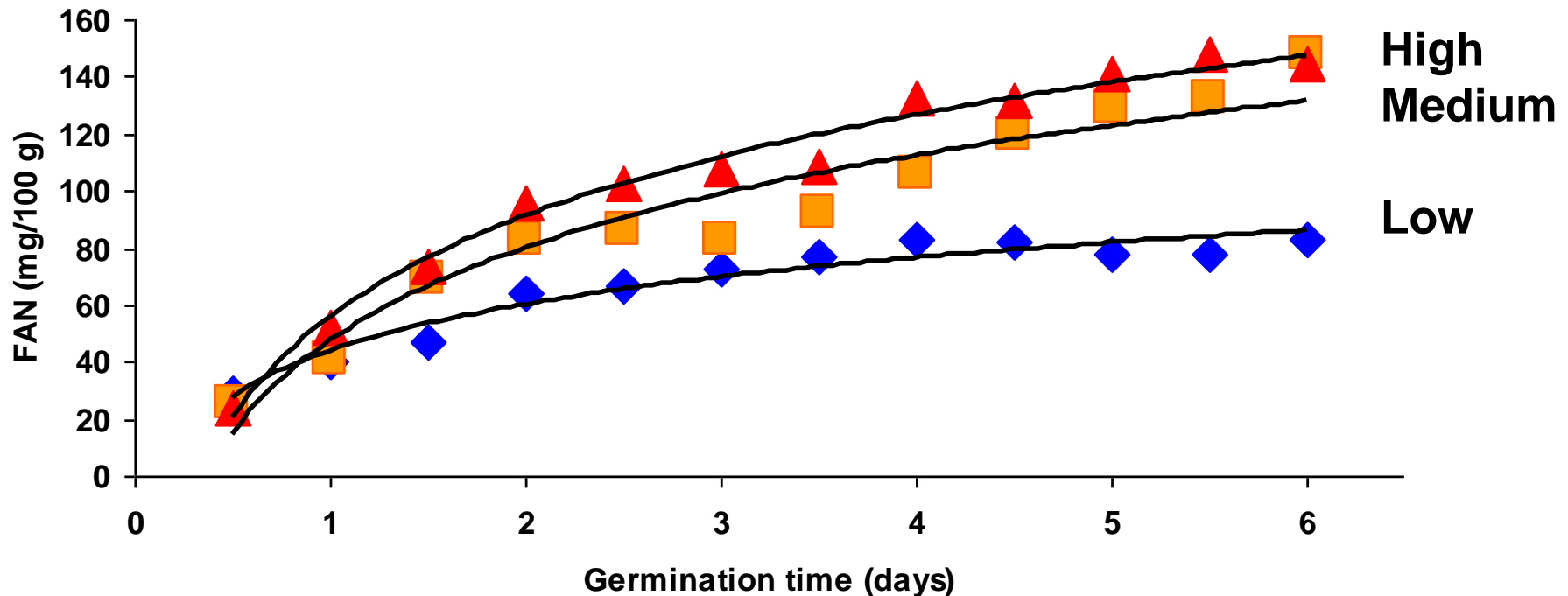
– Particularly the external roots and shoots

However

FAN production during brewing, unlike starch hydrolysis, is very slow

- Major sorghum proteins are resistant to break down

DEVELOPMENT OF FREE AMINO NITROGEN DURING SORGHUM MALTING

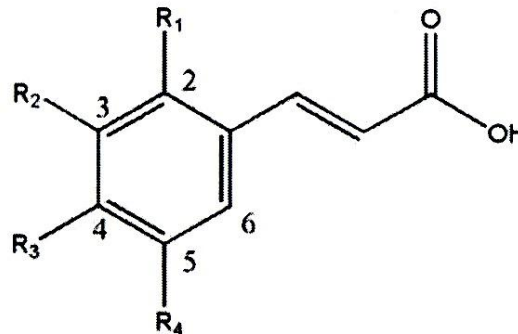
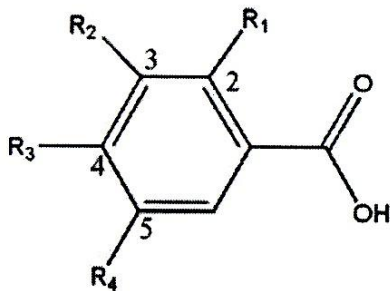


There is very little FAN in unmalted sorghum grain
FAN is produced as a result of protease activity
FAN production is affected by Germination Temperature and Moisture – This shows effect of Moisture
Optimum temperature is around 24°C, as for amylase activity

PHENOLICS IN SORGHUM

Three different types of phenolics can be found in sorghum

1. Phenolic acids – simple chemicals found in all varieties of sorghums (in fact in all cereals)

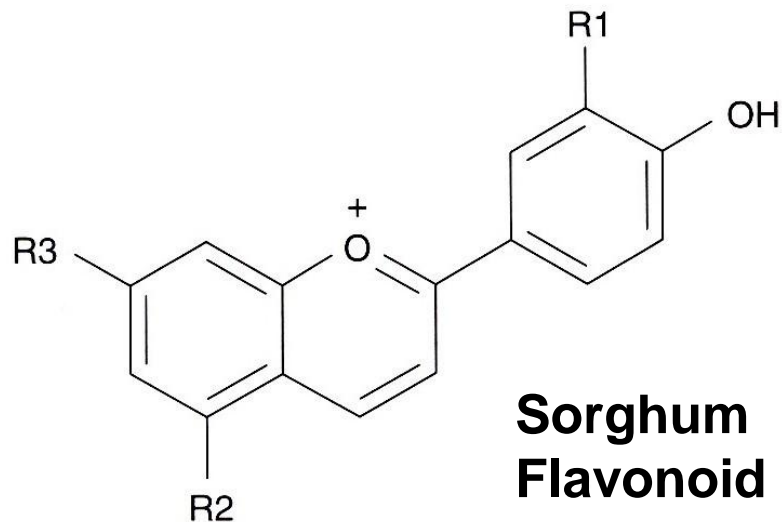


Sorghum phenolic acids basic structures

2. Flavonoids

More complex chemicals

- Found in all types of sorghum, but concentration differs between varieties
- Flavonoids are pigments – so Red Sorghums contain much higher levels
- Concentrated in the Pericarp (bran layer)



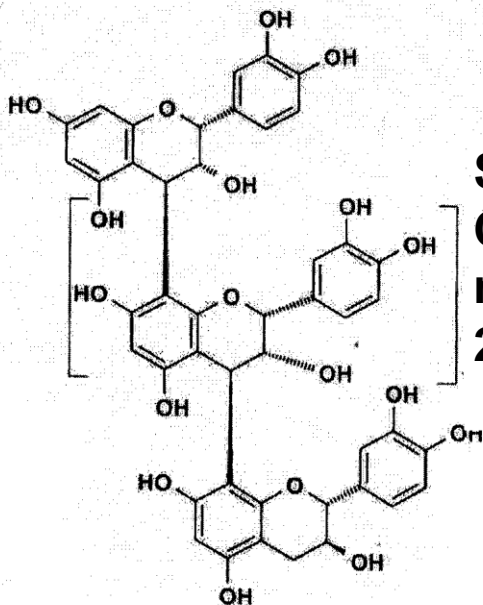
**Sorghum
Flavonoid
basic structure**



3. Condensed Tannins (Proanthocyanidins)

Complex polymers of flavonoid units

- *Only found in Tannin Sorghums*
(those with a Pigmented Testa layer)
- Colour of sorghum grain is a very poor guide as to whether it contains tannins
- N.B. Most Red varieties Do Not (as in previous slide)
- Some White varieties to do (as here)



Sorghum
Condensed tannin
n = up to approx.
20 units of flavonoids



**N.B. Tannins in malts made from Tannin Sorghums will inactivate malt enzymes when in brewing,
Unless tannins are inactivated**

Treatments to Inactivate tannins during malting:

- Steep grain in very dilute formaldehyde solution (formaldehyde is a hazardous chemical. Its use in foods is not allowed in many countries)**
- Steep grain in dilute Sodium Hydroxide (Caustic Soda) Solution (preferred treatment)**

Caustic steep of White Tannin Sorghum
Note: red phenolics extracted into Steep water



MOULDS AND MYCOTOXINS

The warm and damp conditions of sorghum malting encourage Mould (Fungal) growth

Some moulds can produce Mycotoxins (literally meaning “Fungal Toxins”)

Examples of Mycotoxins include:

Aflatoxins - produced by Aspergillus fungi

Fumonisin - produced by Fusarium fungi)

Mycotoxins are extremely poisonous

**They are Acute Poisons
and**

Will cause Cancer with repeated exposure

**Countries have very strict limits on Mycotoxins in
Foods**

South African Regulations

**10 micrograms Aflatoxin per kg (10 parts per billion)
i.e. 10 milligrams per ton of sorghum malt**



Would you eat this malt?

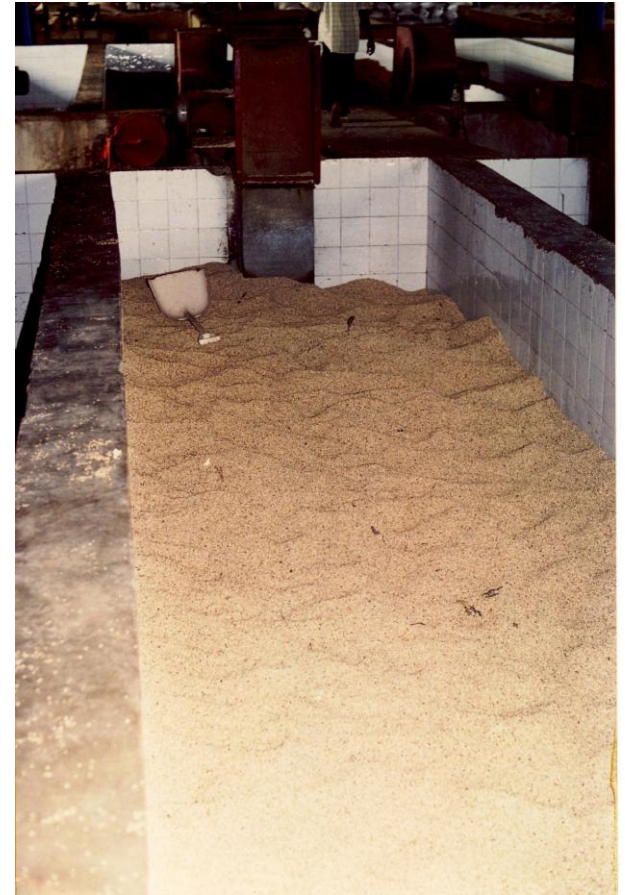
I understand that the company involved brewed beer with it

PREVENTING MOULD GROWTH IN MALTING

1. Don't use mouldy grain
2. Clean grain properly – remove all broken grains
3. Only use grain that has high germinability (>90%)
4. Caustic steep- reduces fungal load on grain
5. Keep germination time as short as possible
6. Don't stress the germinating grain (malt on previous slide got too dry and died, and then was watered)
7. Make sure that the Turners prevent the germinating grain from clumping
8. Make sure that the Turners are not crushing the sorghum grains
9. Steam clean the malting boxes after each malting



A



B

**Which of these two sorghum maltings will produce
The better quality malt?**