

University of Nebraska - Lincoln

DigitalCommons@University of Nebraska - Lincoln

---

Sheldon Museum of Art Catalogues and  
Publications

Sheldon Museum of Art

---

1970

## SELECTED WORKS FROM THE COLLECTION OF MRS. A.B. SHELDON

Norman Geske

*Sheldon Memorial Art Gallery, University of Nebraska- Lincoln*

Follow this and additional works at: <https://digitalcommons.unl.edu/sheldonpubs>

---

Geske, Norman, "SELECTED WORKS FROM THE COLLECTION OF MRS. A.B. SHELDON" (1970). *Sheldon Museum of Art Catalogues and Publications*. 118.

<https://digitalcommons.unl.edu/sheldonpubs/118>

This Article is brought to you for free and open access by the Sheldon Museum of Art at DigitalCommons@University of Nebraska - Lincoln. It has been accepted for inclusion in Sheldon Museum of Art Catalogues and Publications by an authorized administrator of DigitalCommons@University of Nebraska - Lincoln.





## SELECTED WORKS FROM THE COLLECTION OF

# *Mrs. A. B. Sheldon*

**INTRODUCTION :** The exhibition of works of art selected from the collection of Olga Sheldon is an event of particular pleasure for those of us associated with the Sheldon Gallery. For the first time we have an opportunity to demonstrate that Mrs. Sheldon, aside from being one of the Gallery's best friends, is also a person who truly loves art and artists and who finds a major satisfaction in knowing and sharing their works and personalities. While, on the one hand, she has secured for the gallery collection a number of major works which otherwise might never have been ours, she has also acquired for her own pleasure a houseful of art objects of the most varied sort, all of them marked by the quality of being good to live with. Her walls accommodate a Picasso and a Villon along with works by artists whose names would be largely unknown outside Nebraska. Her eye and taste respond to the creative impulse in its simplest sense: they have none of the attendant calculations of historicism, status seeking or speculative investment.

The writer can speak with all possible warmth of pleasure afforded by Mrs. Sheldon's company on any number of art safaris. It has been a rewarding experience to have the invaluable check of her response to any given object under consideration, which, it must be said, has not invariably seconded my own.

At the same time it is clear what a remarkable response to the larger problems of museum acquisition is contained in the paintings and sculpture acquired for eventual gift to the Gallery collection. What museum in the world would not be forever grateful for the single gift of such a masterpiece

January 20 through February 15, 1970 : THE SHELDON MEMORIAL ART GALLERY

as Brancusi's "Princess X"? In addition she has given a dozen works ranging from Ralph Blakelock to Red Grooms, to enhance and extend the collections of the University and the Nebraska Art Association.

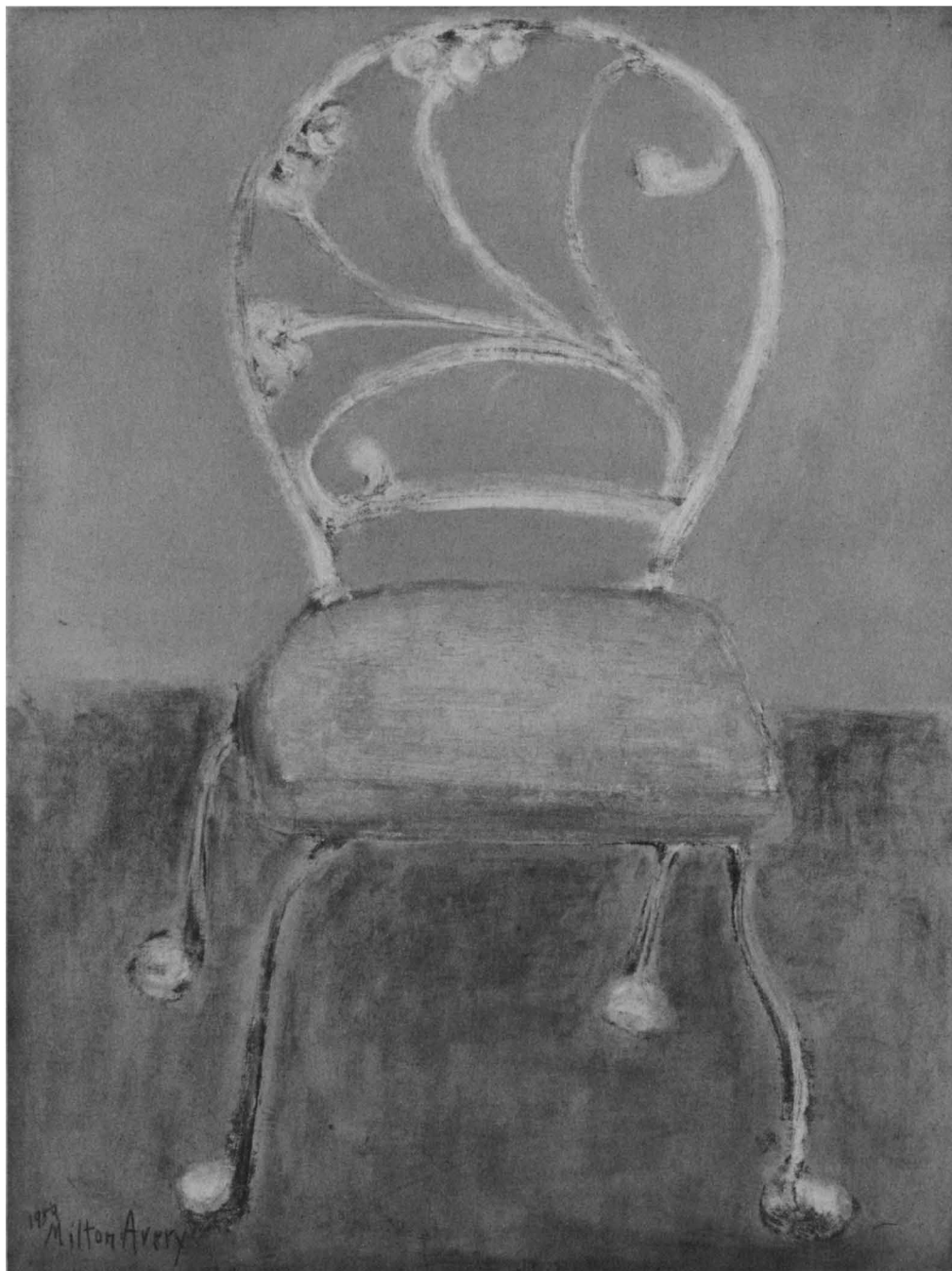
I cannot neglect the present opportunity to acknowledge the contributions made by Mrs. Sheldon to the "behind the scenes" activity of the Sheldon Gallery. Fortunately for us she sees the gallery operation 'in toto' as a matter of the total professional responsibility which lies behind the display of works in the galleries. She has contributed to such non-budgeted activities as travel grants and special training courses for staff members, an annual award of a gallery assistantship to a graduate student in the University's department of Art, the necessary refinements and precautions of framing and conservation and, most recently, to the successful realization of the Gallery's participation in the 34th Venice Biennale.

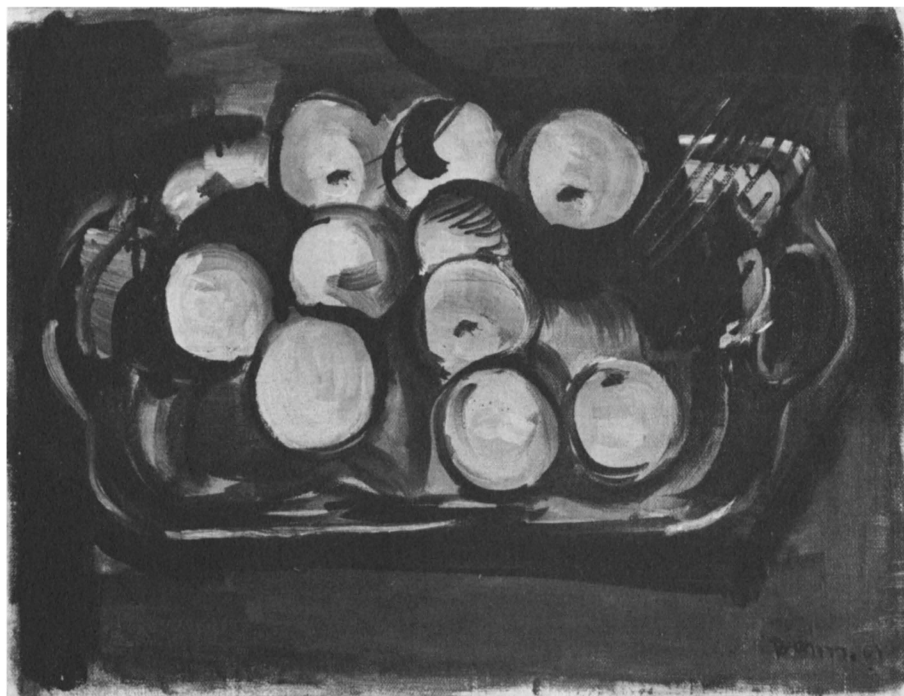
The gift of the Gallery, the building and its equipment, and the soon to be realized Sculpture Garden, by Frances and Bromley Sheldon is one of the most important gifts ever made to the state, through its University. It is a matter of the greatest gratification that the standards of quality and the spirit of generosity of that gift continue in the concern and activity of Mrs. Sheldon. The present exhibition is intended to demonstrate our appreciation of her interests.

—NORMAN A. GESKE, Director



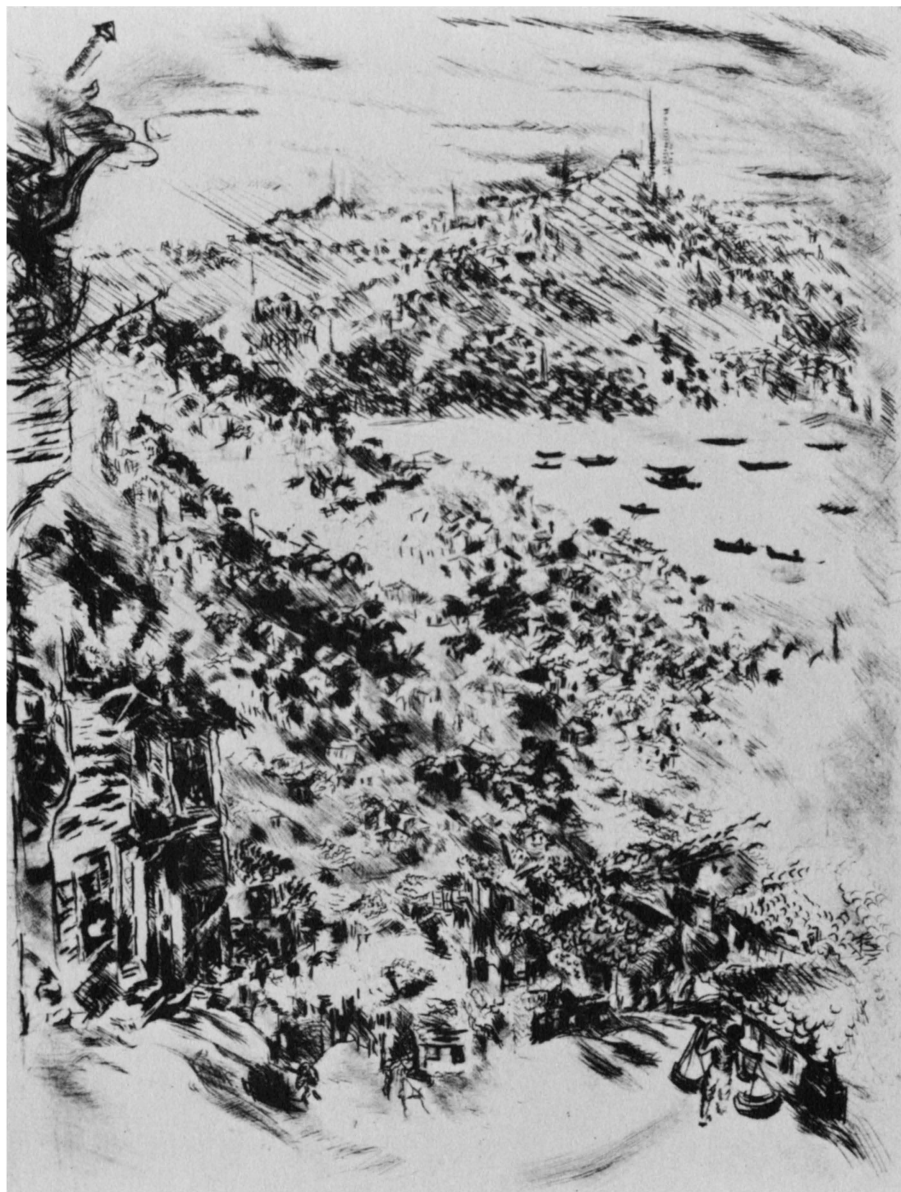
MILTON AVERY  
1 FANCY CHAIR  
Oil on canvas board  
24 x 18 inches





BEN BENN  
3 ORANGES ON TRAY  
Oil on canvas  
12 x 16 inches

ALIYE BERGER-BORONAI  
5 HALICTE YOGURTCU  
Etching  
11 1/8 x 8 7/16 inches







RALPH BLAKELOCK

8 HEAVY WOODS—MOONLIGHT

Oil on cardboard

6 1/8 x 9 3/4 inches

CONSTANTIN BRANCUSI  
9 PRINCESS X  
Marble  
22 x 11 x 9 inches





ROBERT CREMEAN  
10 SWINGING WOMAN  
Wood mache  
58 x 35 1/2 x 67 inches





EDWIN DICKINSON  
11 GIRL ON TENNIS COURT  
Oil on panel  
36 x 30 inches



FREDERICK FRANCK  
12 USSR EVENING OF JULY 22 1962  
Ink  
12 1/4 x 18 inches





# RED GROOMS

15 FIAT AND SHEEP

Wood construction

13 x 45 3/4 x 4 1/2 inches

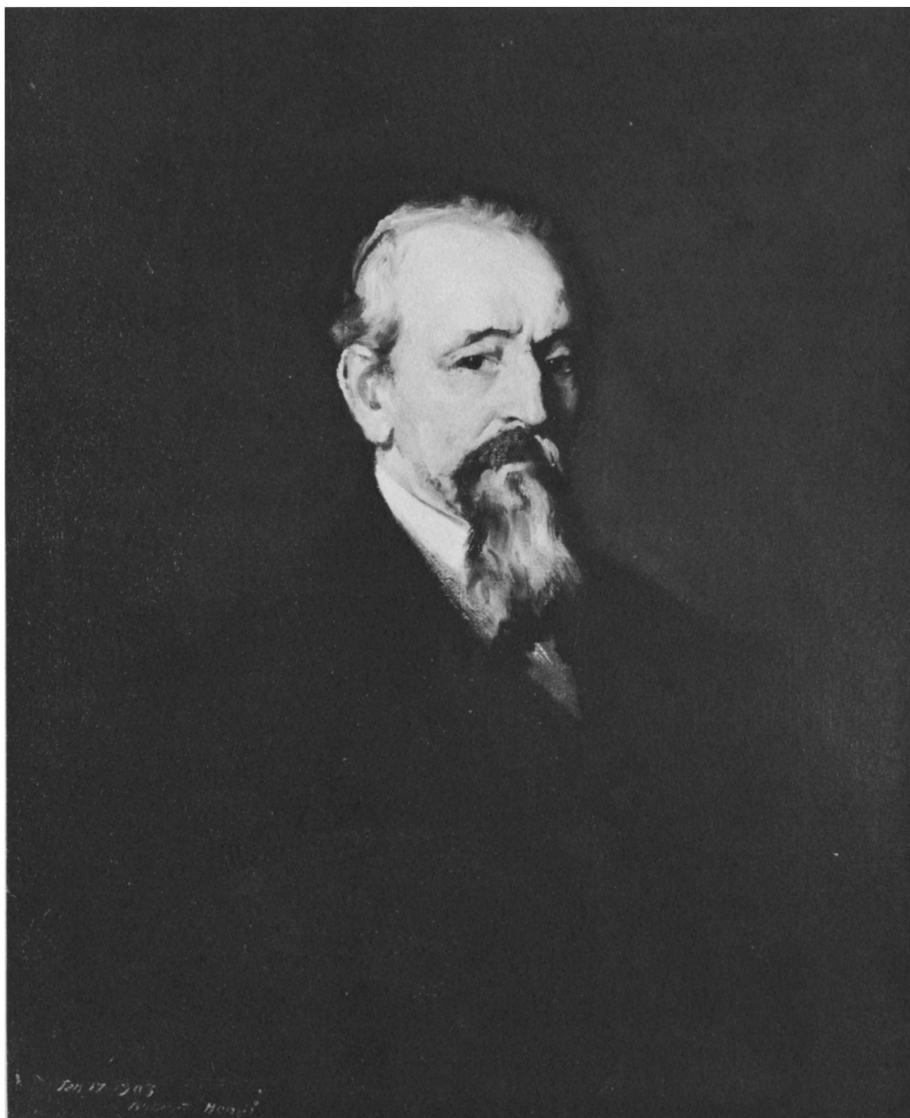
## FRANK GALLO

14 GIRL ON COUCH

Epoxy resin

48 x 51 x 40 inches





ROBERT HENRI

20 PORTRAIT OF JOHN J. COZAD

Oil on canvas

32 x 26 inches

## CATALOGUE

**MILTON AVERY (1893-1965)**

**1 FANCY CHAIR**

Oil on canvas board, 24 x 18 inches

Signed lower left : 1959 Milton Avery

**VIRGINIA BANKS (1920- )**

**2 CAT WALKING THROUGH GRASS**

Oil on canvas, 14 x 29 1/4 inches

Signed lower right : Virginia Banks

**BEN BENN (1884- )**

**3 ORANGES ON TRAY**

Oil on canvas, 12 x 16 inches

Signed lower right : Benn 61

**ALIYE BERGER-BORONAI (1935- )**

**4 COMPOSITION**

Etching, 2 color, 7 9/16 x 5 15/16 inches

Signed lower left : Aliye Berger-Boronai

**5 HALICTE YOGURTCU (Yogurt Seller at the Golden Horn)**

Etching, 11 1/8 x 8 7/16 inches

Signed lower right : Aliye Berger-Boronai

**6 RETOUR\***

Etching, 2 color, 7 7/8 x 10 inches

Signed lower right : Aliye Berger

\* The title as given by the artist does not correspond to the image which depicts a group of sleeping figures.



7 YOGURTCU (Yogurt Vendor)  
Etching, 3 color, 9 3/8 x 7 inches  
Signed lower right : Aliye Berger-Boronai

RALPH BLAKELOCK (1847-1919)

8 HEAVY WOODS—MOONLIGHT  
Oil on cardboard, 6 1/8 x 9 3/4 inches  
Signed lower left : R.A. Blakelock

CONSTANTIN BRANCUSI (1876-1957)

9 PRINCESS X, 1916\*  
Marble, 22 x 11 x 9 inches  
Unsigned  
University Collection, gift of Mrs. Sheldon, 1963

\* Princess X is presently on loan as part of the exhibition of the artist's work shown at the Philadelphia Museum of Art, the Solomon R. Guggenheim Museum of New York and the Art Institute of Chicago.

ROBERT CREMEAN (1932- )

10 SWINGING WOMAN  
Wood mache, 58 x 35 1/2 x 67 inches  
Unsigned  
University Collection, gift of Mrs. Sheldon, 1960

EDWIN DICKINSON (1891- )

11 GIRL ON TENNIS COURT, 1926  
Oil on panel, 36 x 30 inches  
Unsigned  
Collection of the Nebraska Art Association, gift of Mrs. Sheldon, 1961

FREDERICK FRANCK (1909- )

12 USSR EVENING OF JULY 22 1962

Ink, 12 1/4 x 18 inches

Signed lower left : Franck '62

SAM FRANCIS (1923- )

13 114-501

Lithograph 5/23, 25 1/4 x 20 1/4 inches

Signed lower right : Sam Francis

FRANK GALLO (1933- )

14 GIRL ON COUCH

Epoxy resin, 48 x 51 x 40 inches

Signed : GALLO 67

RED GROOMS (1937- )

15 FIAT AND SHEEP

Wood construction, 13 x 45 3/4 x 4 1/2 inches

Signed : RED GROOMS 69

MIMI GROSS (1940- )

16 ALBEROBELLO

Craypa, 12 3/4 x 18 3/8 inches

Signed lower right : Mimi Gross

ALAN GUSSOW (1931- )

17 TERRACE IN THE SUN

Oil on canvas, 9 x 12 1/2 inches

Signed lower left : Gussow

LEON HARTL (1889- )

18 ROSES

Oil on canvas, 11 x 5 inches

Signed lower right : Leon Hartl/ to: Mrs. Bromley Sheldon, 1961

JOHN HELIKER (1909- )

19 PEPPER

Oil on canvas, 12 x 9 1/8 inches

Unsigned

ROBERT HENRI (1865-1929)

20 PORTRAIT OF JOHN J. COZAD

Oil on canvas, 32 x 26 inches

Signed lower left : Jan 17 1903 Robert Henri

21 SELF PORTRAIT

Oil on canvas, 32 x 26 inches

Signed bottom left center : Robert Henri/ right center: June 1903

22 BOOTHBAY HARBOR, 1910

Oil on canvas, 26 x 32 inches

Signed lower left : Robert Henri

University Collection, gift of Mrs. Sheldon, 1965

WINSLOW HOMER (1836-1910)

23 A DARK HOUR, 1881-82

Charcoal heightened with wash, 8 1/8 x 12 1/4 inches

Signed lower left : "H"

LEE JACKSON (1909- )

24 STOCK HANDLERS, RODEO

Oil on board, 8 1/2 x 17 1/2 inches

Signed lower right : Lee Jackson

LARRY JOHNSON (1935- )

25 LANDSCAPE, 1960

Oil on canvas, 54 1/8 x 60 1/4 inches

Signed lower right : Johnson

WILLIAM LYBERIS (1931- )

26 WINDOW

Oil on canvas, 31 1/2 x 39 3/8 inches

Signed lower right : Lyberis

JOHN MARIN (1875-1953)

27 WITHIN PARIS

Water color, 13 1/8 x 16 1/16 inches

Signed lower left : Marin 09 and center left: Marin '09

28 RAMAPO LANDSCAPE #2

Water color, 11 1/2 x 8 3/4 inches

Signed lower right : per J.M. Jr.

EWALD MATARE (1887- )

29 BUFFALO

Stone, 3 3/4 x 5 x 1 3/4 inches

Unsigned



**ALFRED J. MILLER (1810-1874)**

**30 PURSUIT OF A GRISLY (sic) BEAR IN THE BLACK HILLS NEAR FORT LARRIMER**

Ink sepia with pencil, 7 3/4 x 7 1/8 inches

Unsigned

**GEORGE MORRISON (1919- )**

**31 ROCKPORT HOUSES**

Oil on canvas, 7 x 11 inches

Signed lower right : George Morrison

**MASAYUKI NAGARE (1923- )**

**32 MEDITATION, 1963**

Blair granite, 15 1/2 x 9 1/2 x 14 inches

Unsigned

**LARRY PETERSON (1935- )**

**33 SOUTHWEST LANDSCAPE**

Acrylic on paper, 5 11/16 x 7 inches

Signed lower right : Peterson 67

**PABLO PICASSO (1881- )**

**34 HOMME BARBU COURONNE DE FEUILLAGE**

(Bearded Man Crowned with Leaves), 1962

Linocut, 6 color, 33/50, 13 5/8 x 10 1/2 inches

Signed lower right : Picasso

**OGDEN PLEISSNER (1905- )**

**35 SHELDON'S HOUSE**

Water color, 7 x 12 inches

Signed lower right : Pleissner

RUDY POZZATTI (1925- )

36 PIAZZA EARLY MORNING

Oil on canvas, 16 x 24 inches

Signed center left : Pozzatti 54

37 WHITE SKY

Oil on canvas, 24 x 34 inches

Signed lower right : Pozzatti '54

38 BEFORE SNOW

Oil on canvas, 20 x 30 inches

Signed lower left : Pozzatti 54

39 PERUGIA

Etching, 3 color, 138/210, 12 x 15 3/4 inches

Signed lower right : Rudy Pozzatti, imp. 1961

ROBERT RAUSCHENBERG (1925- )

40 UNTITLED

Lithograph 5/38, 29 3/4 x 22 7/8 inches

Signed lower right : Rauschenberg 1962

Gift of Philip Johnson

JEANNE RICHARDS (1923- )

41 COUNTER RONDO

Etching, 3 color, 5/5, 14 5/8 x 14 5/8 inches

Signed lower right : Jeanne Richards

42 HORSES

Ink and charcoal, 22 1/8 x 30 inches

Signed lower right : J.H. Richards

43 PONY c. 1962

Woodcut  $5\frac{5}{8}$ ,  $53\frac{3}{8}$  x  $27\frac{3}{4}$  inches

Signed lower right : Jeanne Richards

GEORGE ROUAULT (1871-1958)

44 MADAME LOUISE, 1935

from the set *Cirque de l'Etoile Filante*, Vollard, 1938

Color aquatint, 7 color,  $12\frac{5}{16}$  x  $8\frac{3}{8}$  inches

Signed left center in plate, monogram: GR 1935

TOM V. SCHMITT (1929- )

45 COLLAGE

Collage (Danish and Italian artifacts),  $18\frac{1}{8}$  x  $14\frac{1}{2}$  inches

Signed bottom center : Schmitt 62

RAY W. SCHULTZE (1934- )

46 JOHNSON LAKE

Water color,  $4\frac{5}{16}$  x  $6\frac{1}{4}$  inches

Signed : Ray W. Schultze

DAVID W. SEYLER (1917- )

47 SIGNORA, 1960

Bronze,  $14$  x  $4\frac{1}{16}$  x  $3$  inches

Signed : D.S.

JESUS MARIA SOTO (1923- )

48 RYTHMES INTERFERES (Rhythmic Interferences)

Painted wood and metal,  $40\frac{1}{2}$  x  $68$  inches

Unsigned

JANNIS SPYROPOULOS (1912- )

49 TINOS, OLD PORT, 1950

Oil on cardboard, 13 3/8 x 17 inches

Signed lower right : J. Spyropoulos

50 TASSIS B, 1969

Oil on canvas, 46 x 36 inches

Signed on back : Jannis Spyropoulos

DWIGHT STARK (1931- )

51 LADIES AT THE BAR

Acrylic on canvas, 20 x 20 inches

Signed on back : Dwight Stark 1965

EDWARD STASACK (1929- )

52 TWO FIGURES, SIDE BY SIDE, 1961

Masonite intaglio, 10 x 13 1/4 inches

Signed lower right : Stasack

[TADASUKE KUWAYAMA] TADASKY (1935- )

53 UNTITLED T-138, 1965

Acrylic on canvas, 47 x 47 inches

Unsigned

WAYNE THIEBAUD (1921- )

54 CLUB SANDWICH

Oil on canvas, 18 x 24 inches

Signed lower right : Thiebaud 1961



**UNKNOWN (ESKIMO)**

**55 KNEELING FIGURE**

Soapstone, 7 1/4 x 2 5/8 inches

Signed : Eyac (illegible)

**JACQUES VILLON (1875- )**

**56 UNTITLED**

Lithograph, 6 color, 19 7/8 x 14 5/16 inches

Signed lower right : Jacques Villon

**57 LES PEUPLIERS (The Poplars)**

Oil on canvas, 13 x 16 inches

Signed lower left : Jacques Villon

**TOM WESSELMANN (1931- )**

**58 STILL LIFE No. 15**

Oil and collage on canvas, 84 1/2 x 72 1/4 inches

Signed lower right : Wesselmann '62

**JACK ZAJAC (1929- )**

**59 RESURRECTION**

Etching 90/100, 11 5/8 x 15 3/8 inches

Signed lower right : Jack Zajac 1960

**60 RESURRECTION, 1959**

Fiber glass (Unique cast), 78 1/2 x 30 x 32 inches

Unsigned



WINSLOW HOMER

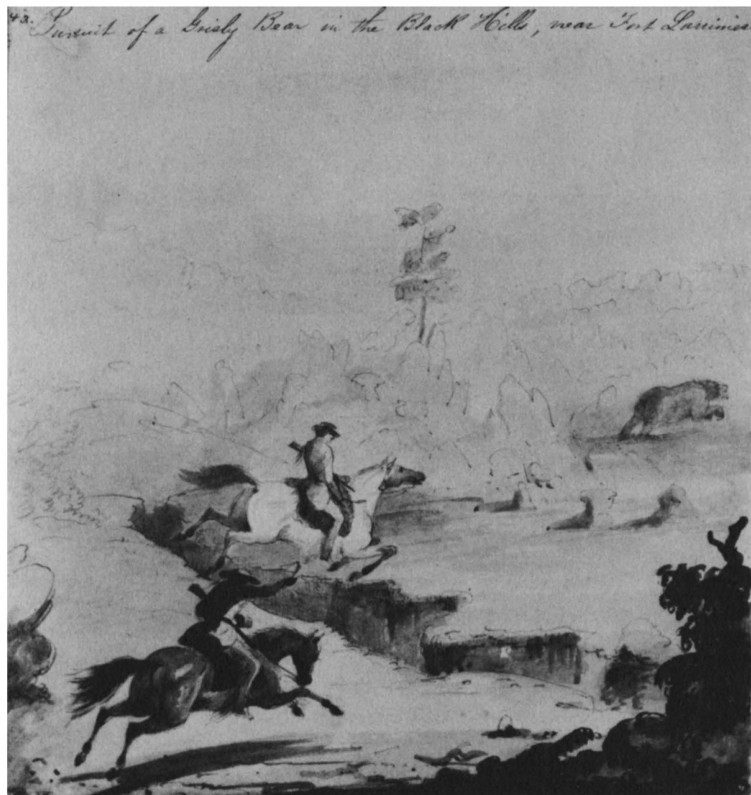
23 A DARK HOUR

Charcoal heightened with wash

8 1/8 x 12 1/4 inches



JOHN MARIN  
28 RAMAPO LANDSCAPE #2  
Water color  
11 1/2 x 8 3/4 inches



ALFRED J. MILLER

30 PURSUIT OF A GRISLY BEAR IN THE BLACK HILLS NEAR FORT LARRIMER

Ink sepia with pencil

7 3/4 x 7 1/8 inches



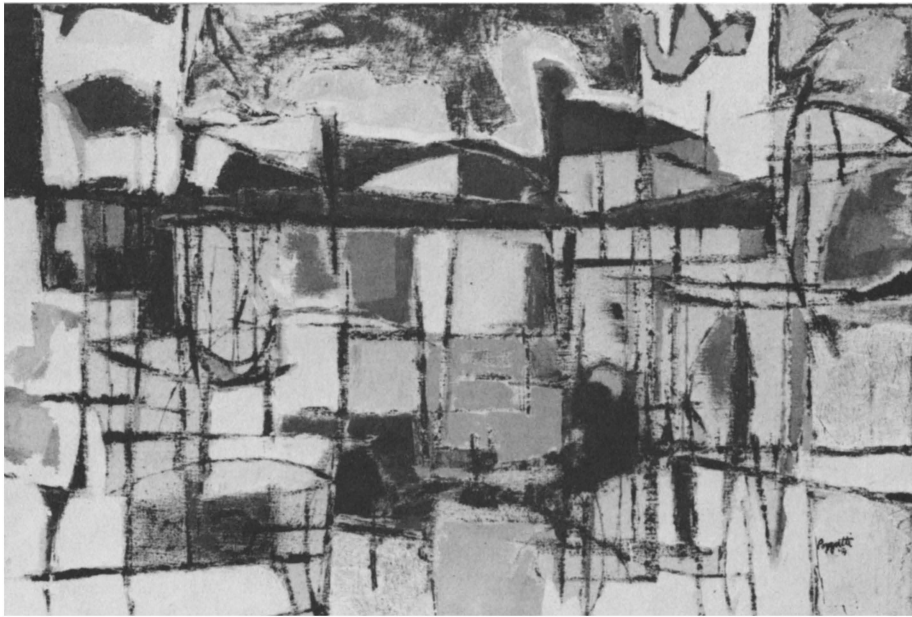
MASAYUKI NAGARE

32 MEDITATION

Blair granite

15 1/2 x 9 1/2 x 14 inches





RUDY POZZATTI

38 BEFORE SNOW

Oil on canvas

20 x 30 inches

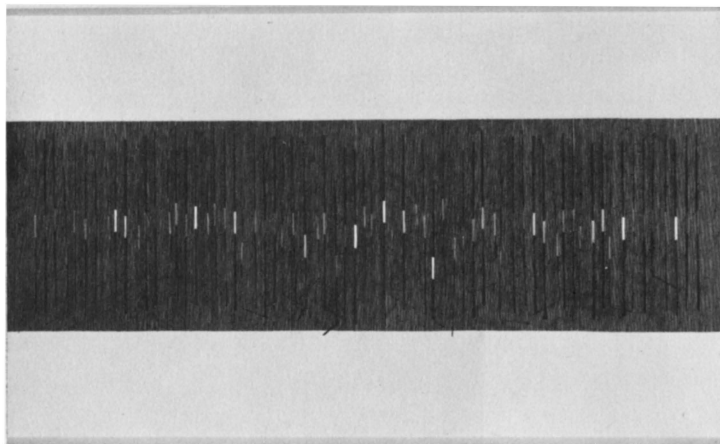


JEANNE RICHARDS

43 PONY

Woodcut

53 3/8 x 27 3/4 inches

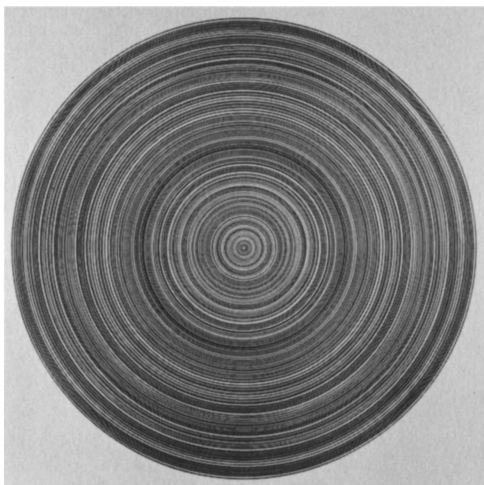


JESUS MARIA SOTO

48 RYTHMES INTERFERES

Painted wood and metal

40 1/2 x 68 inches

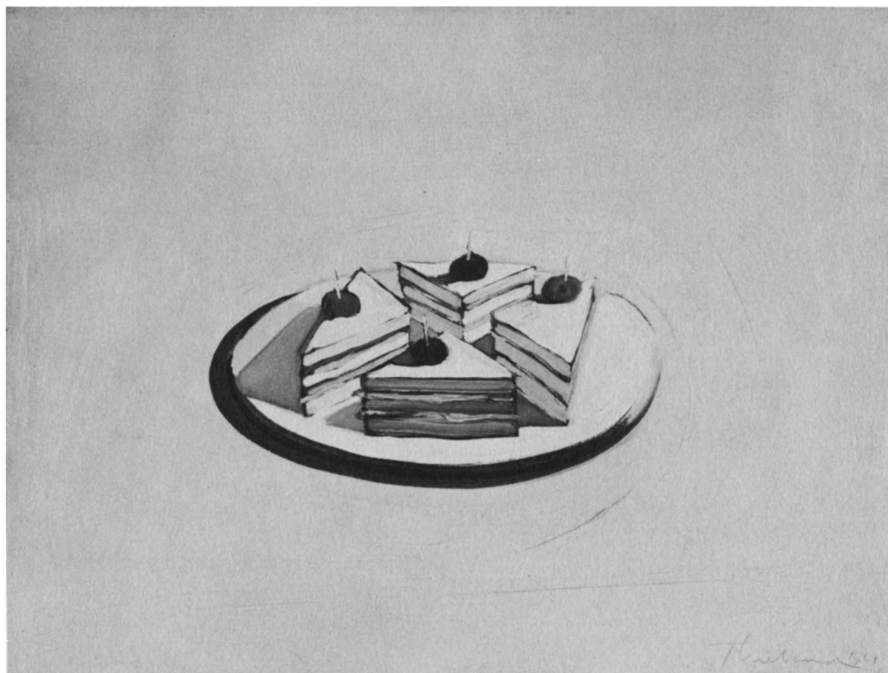


[TADASUKE KUWAYAMA] TADASKY

53 UNTITLED T-138

Acrylic on canvas

47 x 47 inches



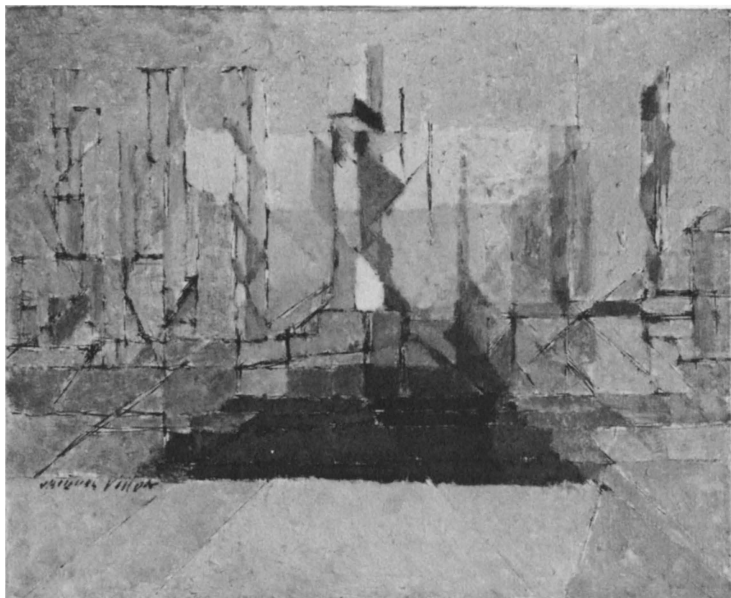
WAYNE THIEBAUD

54 CLUB SANDWICH

Oil on canvas

18 x 24 inches





JACQUES VILLON

57 LES PEUPLIERS

Oil on canvas

13 x 16 inches



TOM WESSELMANN

58 STILL LIFE No. 15

Oil and collage on canvas

84 1/2 x 72 1/4 inches



JACK ZAJAC  
60 RESURRECTION  
Fiber glass  
78 1/2 x 30 x 32 inches

## ACKNOWLEDGMENTS : THE UNIVERSITY OF NEBRASKA, LINCOLN

Merk Hobson, Chancellor

Joseph Soshnik, President

C. Peter Magrath, Dean of Faculties

Robert L. Hough, Dean of the College of Arts and Sciences

Norman A. Geske, Director, University Art Galleries

Jon Nelson, Assistant to the Director

Dwight B. Stark, Director of Extension Services

Mrs. Jane Anderson, Director of Education

Miss Betty Sherwood, Secretary

Mrs. Page Spence, Manager, Art Shop

Clifford Stock, Guard

Exhibition Assistants : Bob Culver

Kathy Dreith

Dennis Kuronen

Jon Shepard

Don Tuttle