

University of Nebraska - Lincoln

DigitalCommons@University of Nebraska - Lincoln

Nebraska 4-H Clubs: Historical Materials and
Publications

4-H Youth Development

March 2013

The Girl's Room : Extension Circular 11-16-2

Follow this and additional works at: <https://digitalcommons.unl.edu/a4hhistory>

"The Girl's Room : Extension Circular 11-16-2" (2013). *Nebraska 4-H Clubs: Historical Materials and Publications*. 250.

<https://digitalcommons.unl.edu/a4hhistory/250>

This Article is brought to you for free and open access by the 4-H Youth Development at DigitalCommons@University of Nebraska - Lincoln. It has been accepted for inclusion in Nebraska 4-H Clubs: Historical Materials and Publications by an authorized administrator of DigitalCommons@University of Nebraska - Lincoln.

E.C. 11-16-2

THE GIRL'S ROOM

Sheet 2 - Color chart
Sheet 3 - Sample floor plan
Sheet 4 - "Before" floor plan

Sheet 5 - "After" floor plan
Sheet 6-7-8 - Furniture cut-outs

COLOR CHART - Use the color chart to show the colors you used in your room after you have made your improvements. Use colored paper, bits of material, paints, etc., to represent the colors you need. (PUT YOUR COLOR CHART IN YOUR PORTFOLIO.)

FLOOR PLANS AND FURNITURE CUT-OUTS - Use the floor plans and furniture cut-outs as you study room arrangement. Use them to help plan for improvements. (PUT THE "BEFORE" AND "AFTER" FLOOR PLANS IN YOUR PORTFOLIO.)

"Before" floor plan - Cut out the furniture cut-outs that represent the pieces of furniture in your room. Paste the furniture cut-outs on the "before" floor plan as your furniture is now arranged. Cut additional pieces if you need them. Also show throw rugs. This will give you a record showing the arrangement of furniture in your room when you started this project.

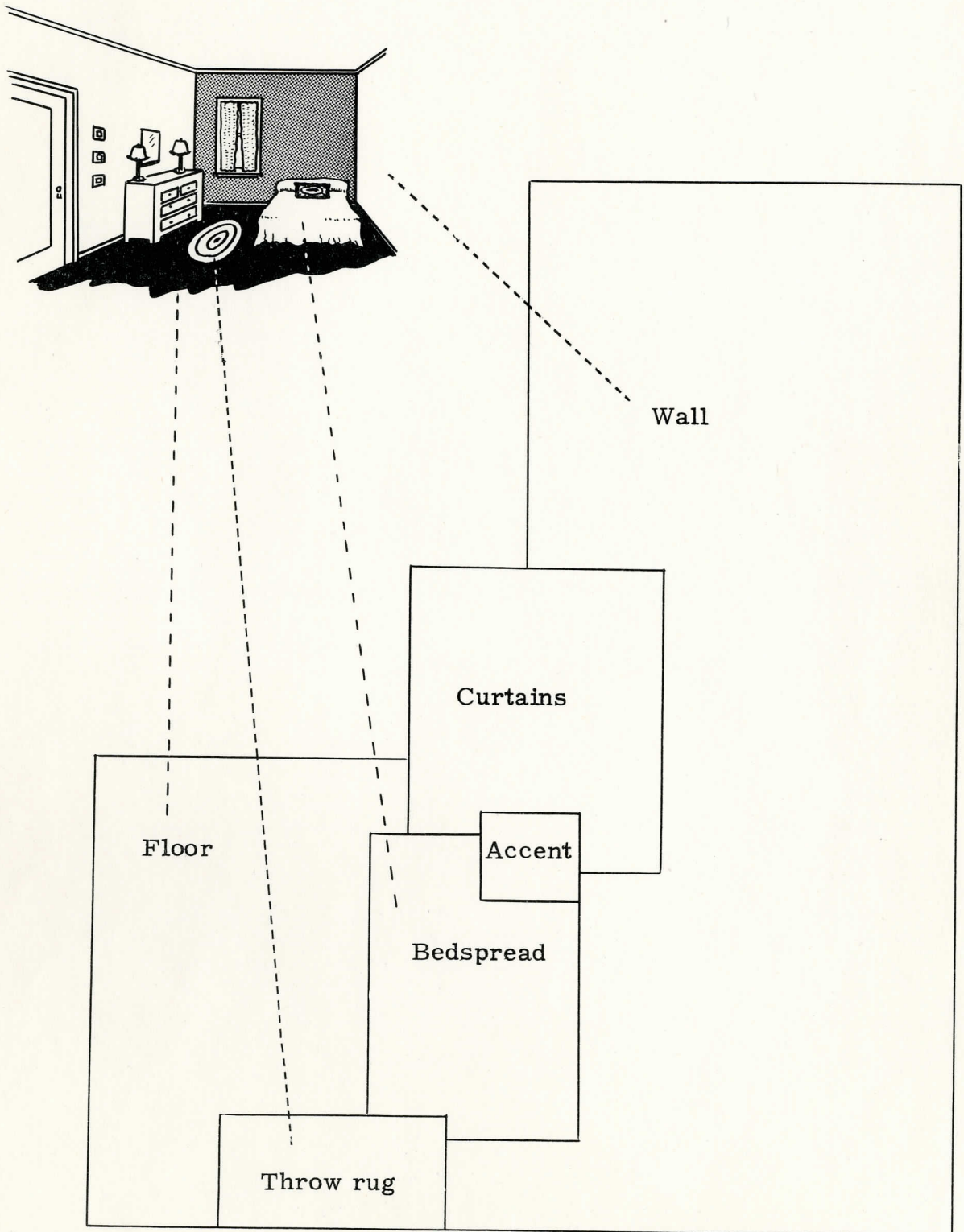
"After" floor plan - Now cut out pieces to represent the furniture you plan to have in your room. If they are cut to scale, you can easily try out a variety of arrangements by shifting them around on the sheet called the "after" floor plan. When you think you have the best possible arrangement, paste the furniture cut-outs in place. This will give you a record showing the arrangement of furniture in your room when you finished this project.

EXTENSION SERVICE
UNIVERSITY OF NEBRASKA COLLEGE OF AGRICULTURE
AND U. S. DEPARTMENT OF AGRICULTURE
COOPERATING
W. V. LAMBERT, DIRECTOR

C.1

MY COLOR CHART

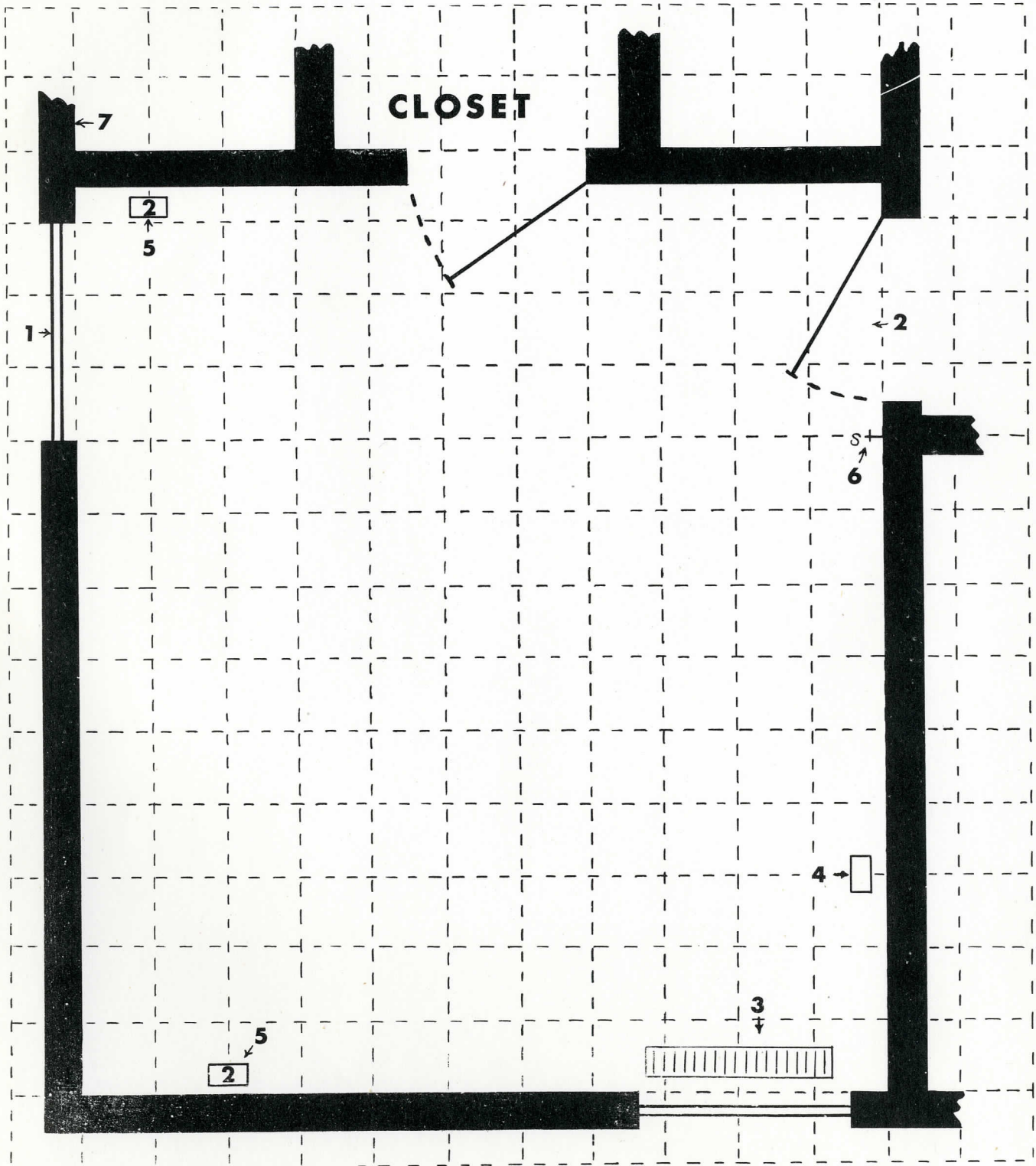
Directions - Show the finished color scheme you have in your room. Use colored paper, bits of material, paints, etc., to represent the colors you have used.



SAMPLE FLOOR PLAN

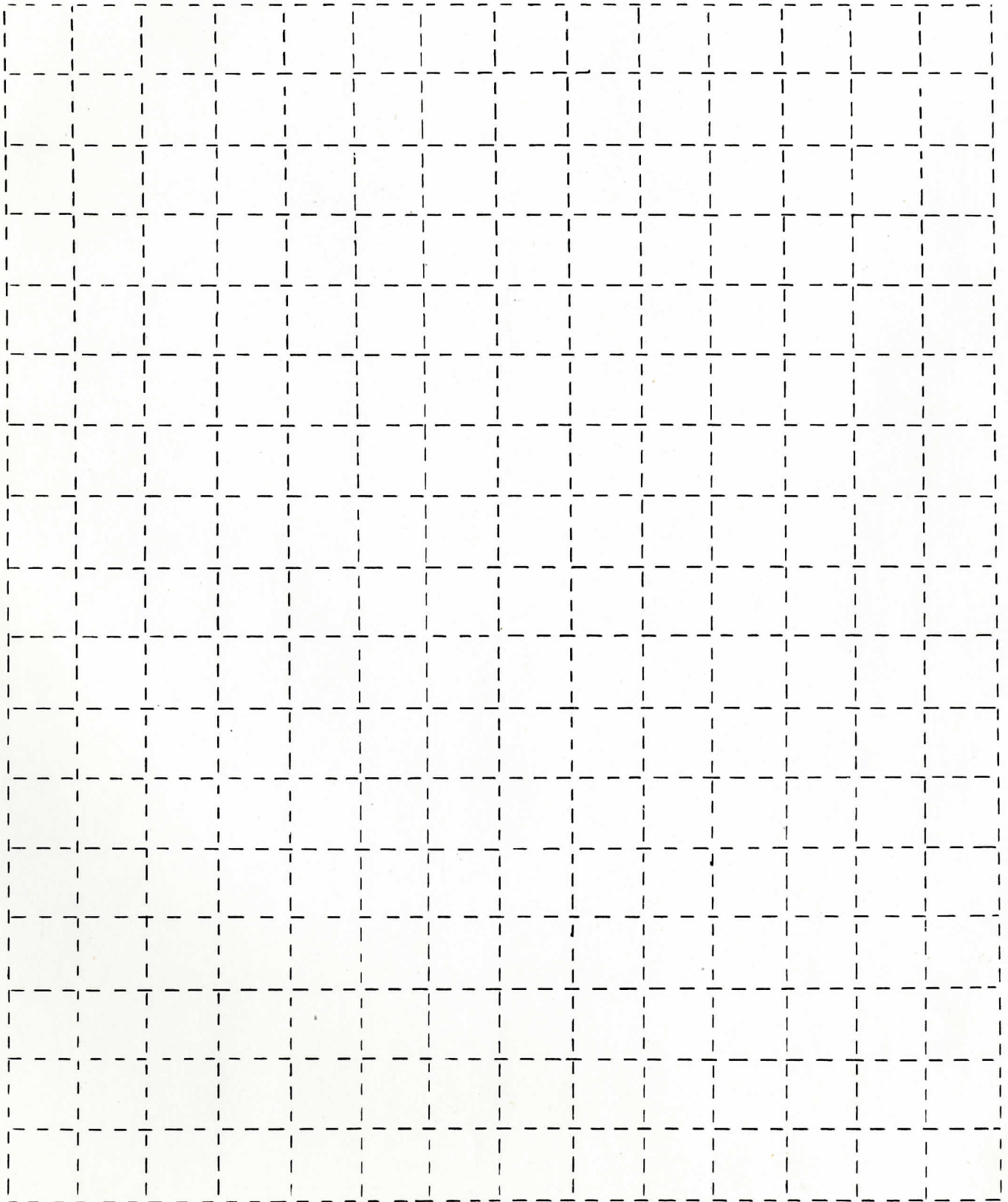
- 1 Window opening
- 2 Doorway & door (indicate direction of swing)
- 3 Radiator

- 4 Single wall plug
- 5 Double wall plug
- 6 Light switch
- 7 Continuing walls



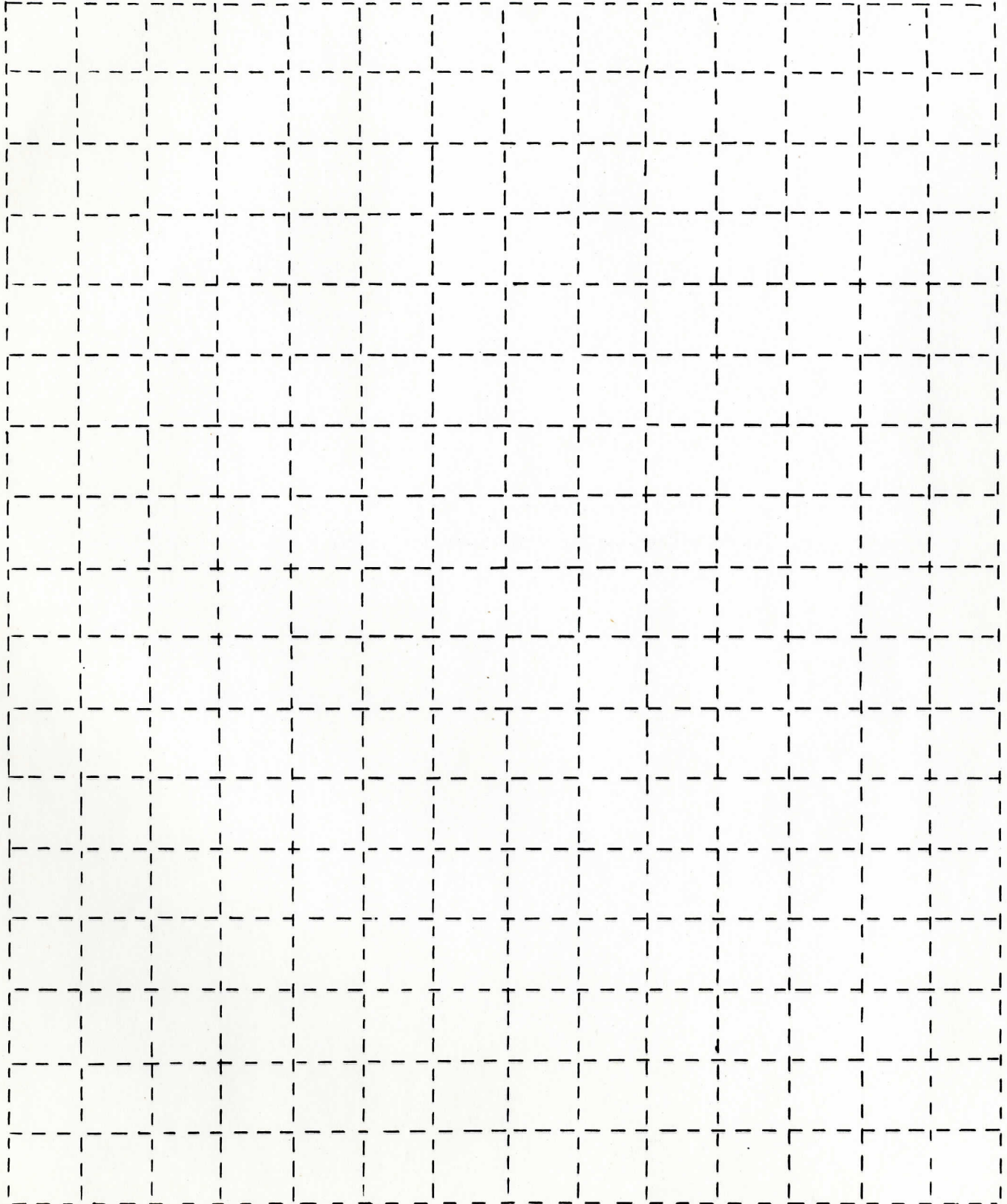
"BEFORE" FLOOR PLAN
Each square equals one square foot

Directions - Draw an outline of your room placing windows and doors as they are placed in your room. Use symbols as they are on the sample floor plan. Paste furniture cut-outs on the floor plan in the same position as your furniture is in your room.



"AFTER" FLOOR PLAN
Each square equals one square foot

Directions - Draw another outline of your room. This time paste furniture cut-outs on the floor plan so they will show the furniture arrangement in your room as it is now since you have made the changes.



FURNITURE CUT-OUTS

Scale 1/2 inch = 1 foot

Directions - Use these furniture cut-outs on your floor plans. Make more if you need them. Make a rug cut-out the size of your rug or rugs.

Single bed

36" x 82"

Single bed

40" x 82"

Three-quarter
bed

46" x 82"

Twin bed

42" x 82"

Twin bed

42" x 82"

Double bed

58" x 82"

FURNITURE CUT-OUTS
Scale 1/2 inch = 1 foot

Med. dresser
20" x 42"

Side
chair
18" x
18"

Side
chair
18" x
18"

Med. chest of
drawers
21" x 40"

Bookcase 10" depth

Upholstered
chair
24" x 26"

Chair
21" x 24"

Bookcase 12" depth

Dressing table
18" x 36"

Bedside
table
14" x 18"

Bedside
table
18" x
18"

Paper
wardrobe
21" x 29"

Desk
26" x 42"

Desk
34" x 42"

FOR OTHER FURNITURE CUT-OUTS
Scale 1/2 inch = 1 foot